

Data Path : Z:\pestpcbsrv\HPCHEM1\ECD_D\Data\PD060221\
 Data File : PD063365.D
 Signal(s) : Signal #1: ECD1A.ch Signal #2: ECD2B.ch
 Acq On : 02 Jun 2021 14:34
 Operator : AR\AJ
 Sample : PTOXICV500
 Misc :
 ALS Vial : 22 Sample Multiplier: 1

Instrument :
 ECD_D
 ClientSampleId :
 ICVPD060221

Integration File signal 1: autoint1.e
 Integration File signal 2: autoint2.e
 Quant Time: Jun 03 01:20:16 2021
 Quant Method : Z:\pestpcbsrv\HPCHEM1\ECD_D\Method\DTX060221.M
 Quant Title : GC Extractables
 QLast Update : Thu Jun 03 01:19:15 2021
 Response via : Initial Calibration
 Integrator: ChemStation

Volume Inj. : 1 µl
 Signal #1 Phase : ZB-MR2 Signal #2 Phase: ZB-MR1
 Signal #1 Info : 30M x 0.32mm x0.2 Signal #2 Info : 30M x 0.32mm x 0.50µm

Compound	RT#1	RT#2	Resp#1	Resp#2	ng/ml	ng/ml

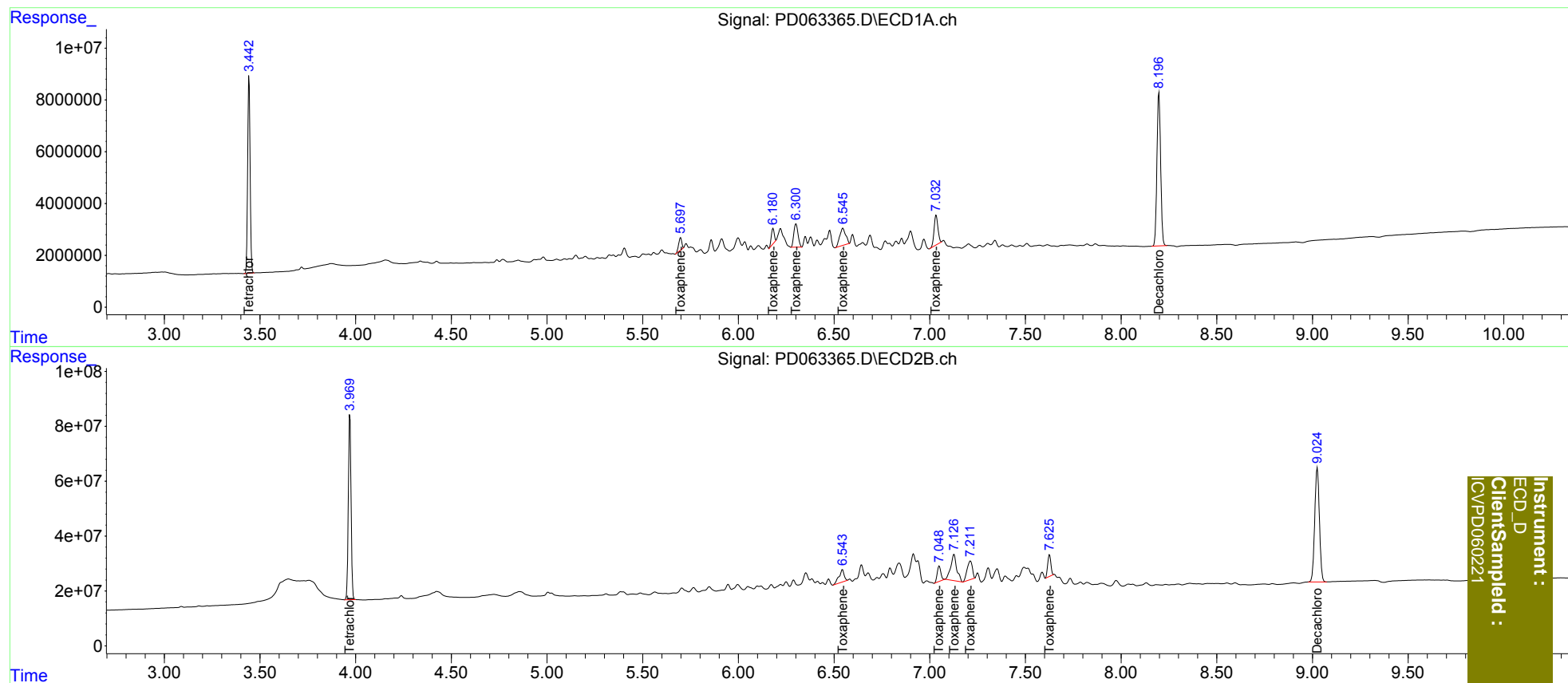
System Monitoring Compounds						
1) SA Tetrachlo...	3.443	3.970	67768356	669.2E6	49.308	49.297
7) SA Decachlor...	8.198	9.025	79718678	708.3E6	49.697	49.817
Target Compounds						
2) Toxaphene-1	5.698	6.544	5356967	84607499	499.651	515.365
3) Toxaphene-2	6.181	7.050	6146612	72851398	530.626	526.375
4) Toxaphene-3	6.301	7.127	13741169	209.2E6	505.298	511.835
5) Toxaphene-4	6.547	7.213	14291502	129.3E6	497.585	514.600
6) Toxaphene-5	7.034	7.626	15873867	90025514	505.593	497.599

(f)=RT Delta > 1/2 Window (#)=Amounts differ by > 25% (m)=manual int.

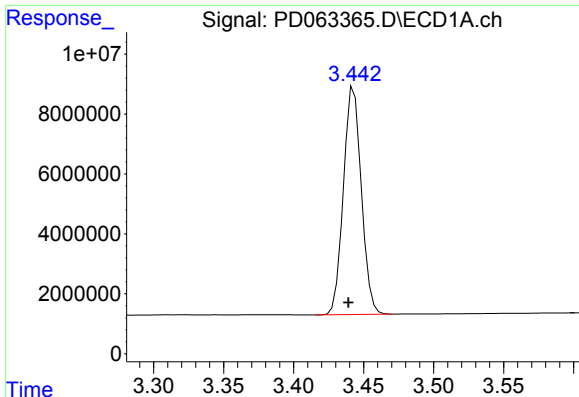
Data Path : Z:\pestpcbsrv\HPCHEM1\ECD_D\Data\PD060221\
 Data File : PD063365.D
 Signal(s) : Signal #1: ECD1A.ch Signal #2: ECD2B.ch
 Acq On : 02 Jun 2021 14:34
 Operator : AR\AJ
 Sample : PTOXICV500
 Misc :
 ALS Vial : 22 Sample Multiplier: 1

Integration File signal 1: autoint1.e
 Integration File signal 2: autoint2.e
 Quant Time: Jun 03 01:20:16 2021
 Quant Method : Z:\pestpcbsrv\HPCHEM1\ECD_D\Method\DTX060221.M
 Quant Title : GC Extractables
 QLast Update : Thu Jun 03 01:19:15 2021
 Response via : Initial Calibration
 Integrator: ChemStation

Volume Inj. : 1 µl
 Signal #1 Phase : ZB-MR2 Signal #2 Phase: ZB-MR1
 Signal #1 Info : 30M x 0.32mm x0.2 Signal #2 Info : 30M x 0.32mm x 0.50µm



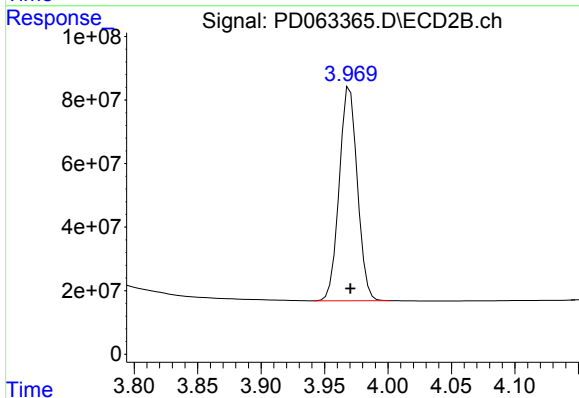
Instrument :
 ECD_D
 ClientSampleId :
 ICV/PD060221



#1 Tetrachloro-m-xylene

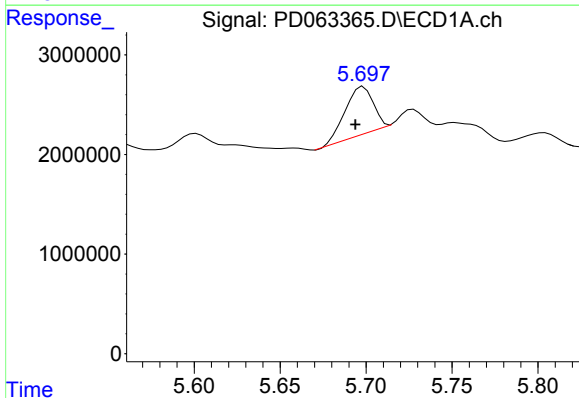
R.T.: 3.443 min
 Delta R.T.: 0.004 min
 Response: 67768356
 Conc: 49.31 ng/ml

Instrument :
 ECD_D
 ClientSampleId :
 ICVPD060221



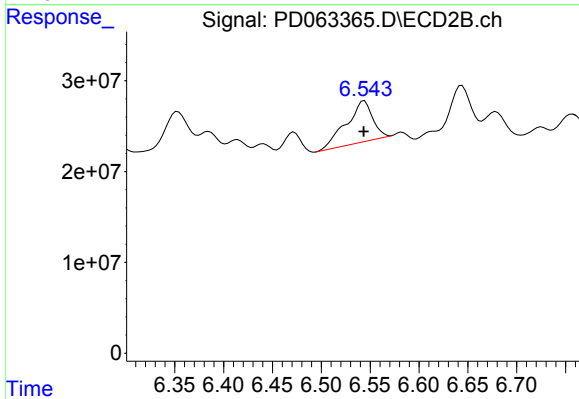
#1 Tetrachloro-m-xylene

R.T.: 3.970 min
 Delta R.T.: 0.000 min
 Response: 669216556
 Conc: 49.30 ng/ml



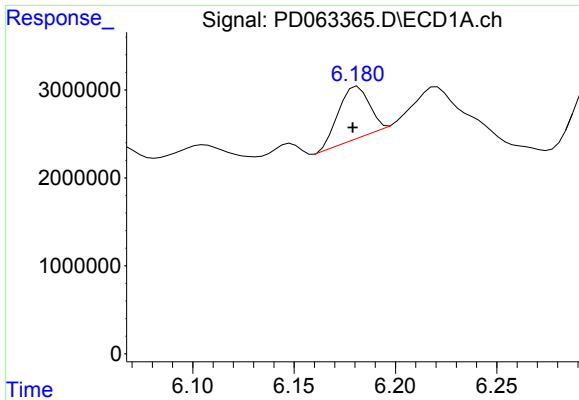
#2 Toxaphene-1

R.T.: 5.698 min
 Delta R.T.: 0.005 min
 Response: 5356967
 Conc: 499.65 ng/ml



#2 Toxaphene-1

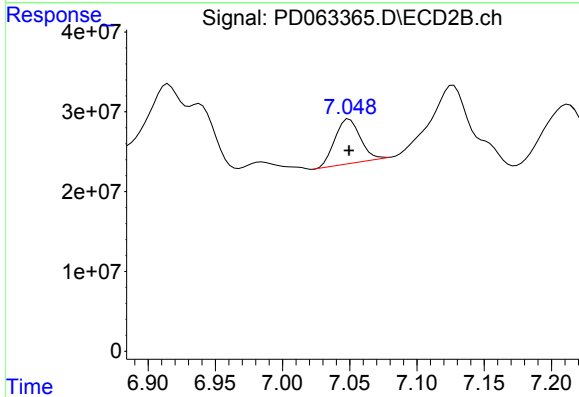
R.T.: 6.544 min
 Delta R.T.: 0.000 min
 Response: 84607499
 Conc: 515.36 ng/ml



#3 Toxaphene-2

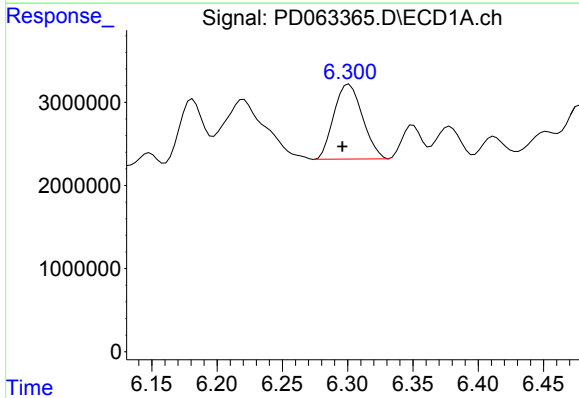
R.T.: 6.181 min
 Delta R.T.: 0.002 min
 Response: 6146612
 Conc: 530.63 ng/ml

Instrument :
 ECD_D
 ClientSampleId :
 ICVPD060221



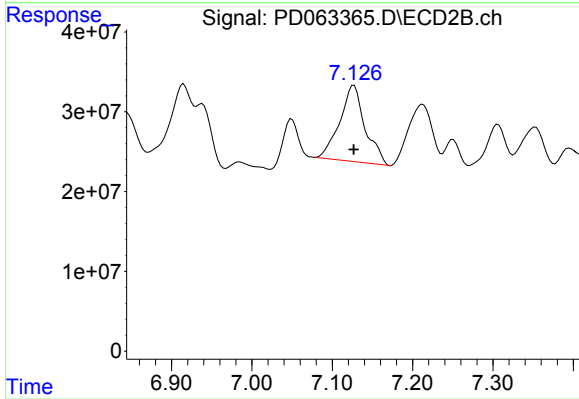
#3 Toxaphene-2

R.T.: 7.050 min
 Delta R.T.: 0.000 min
 Response: 72851398
 Conc: 526.38 ng/ml



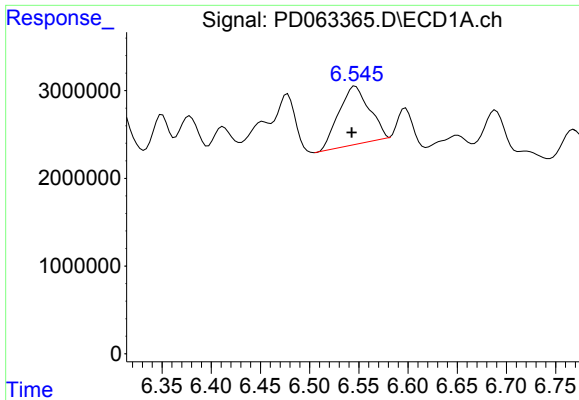
#4 Toxaphene-3

R.T.: 6.301 min
 Delta R.T.: 0.005 min
 Response: 13741169
 Conc: 505.30 ng/ml



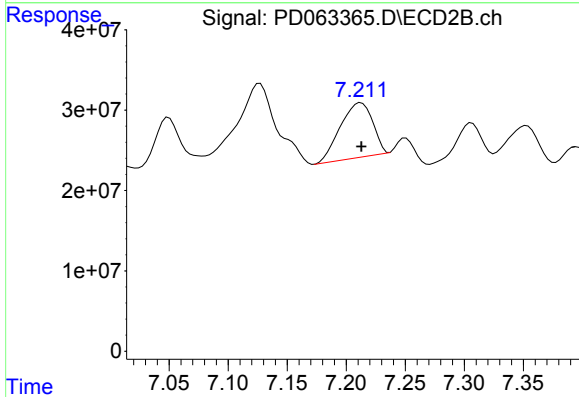
#4 Toxaphene-3

R.T.: 7.127 min
 Delta R.T.: 0.000 min
 Response: 209216721
 Conc: 511.84 ng/ml

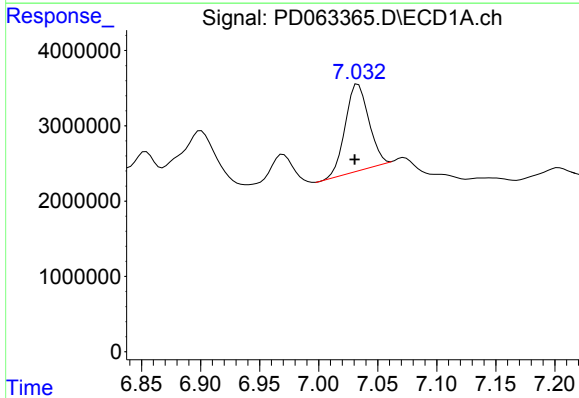


#5 Toxaphene-4
 R.T.: 6.547 min
 Delta R.T.: 0.004 min
 Response: 14291502
 Conc: 497.58 ng/ml

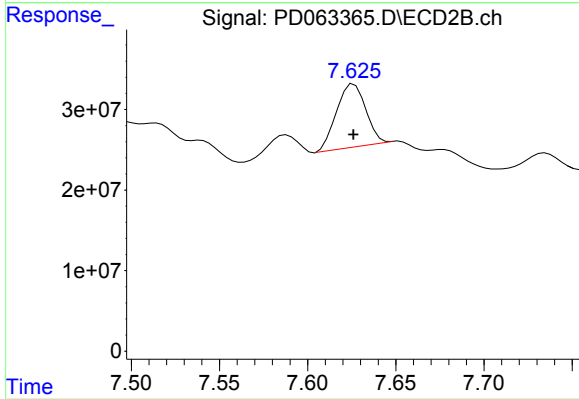
Instrument :
 ECD_D
 ClientSampleId :
 ICVPD060221



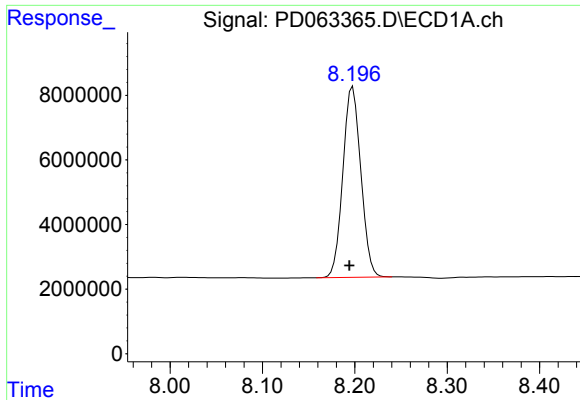
#5 Toxaphene-4
 R.T.: 7.213 min
 Delta R.T.: 0.000 min
 Response: 129295554
 Conc: 514.60 ng/ml



#6 Toxaphene-5
 R.T.: 7.034 min
 Delta R.T.: 0.003 min
 Response: 15873867
 Conc: 505.59 ng/ml



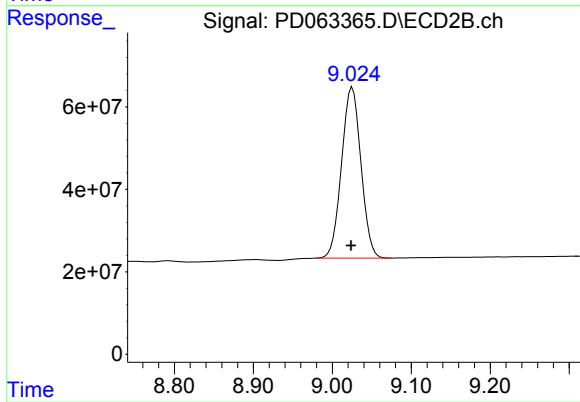
#6 Toxaphene-5
 R.T.: 7.626 min
 Delta R.T.: 0.000 min
 Response: 90025514
 Conc: 497.60 ng/ml



#7 Decachlorobiphenyl

R.T.: 8.198 min
Delta R.T.: 0.003 min
Response: 79718678
Conc: 49.70 ng/ml

Instrument :
ECD_D
ClientSampled :
ICVPD060221



#7 Decachlorobiphenyl

R.T.: 9.025 min
Delta R.T.: 0.002 min
Response: 708300559
Conc: 49.82 ng/ml