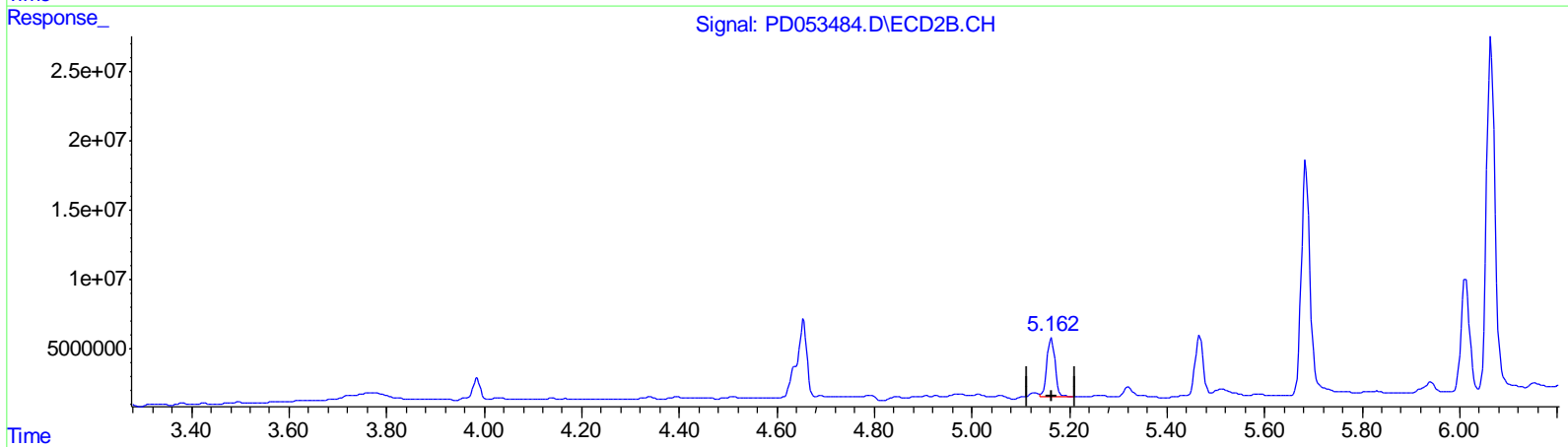
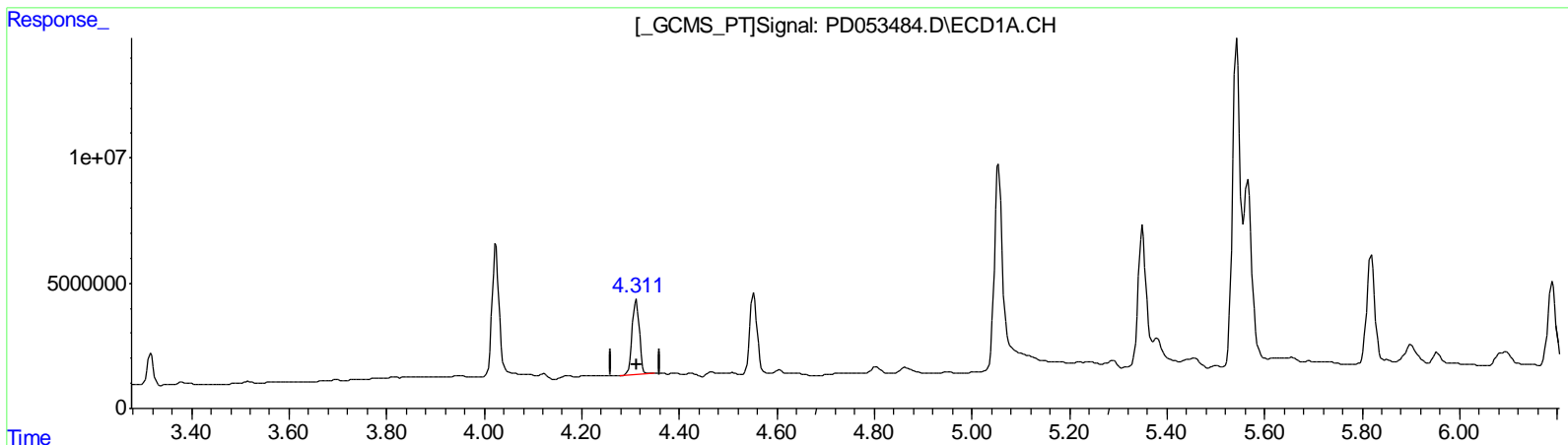


Data Path : Z:\pestpcbsrv\HPCHEM1\ECD_D\Data\PD060319\
 Data File : PD053484.D
 Signal(s) : Signal #1: ECD1A.CH Signal #2: ECD2B.CH
 Acq On : 03 Jun 2019 12:54
 Operator : SM\AJ
 Sample : K3017-18MS
 Misc :
 ALS Vial : 16 Sample Multiplier: 1

Integration File signal 1: autoint1.e
 Integration File signal 2: autoint2.e
 Quant Time: Jun 04 04:14:47 2019
 Quant Method : Z:\pestpcbsrv\HPCHEM1\ECD_D\Method\PD052119CLP.M
 Quant Title : GC Extractables
 QLast Update : Wed May 22 06:53:42 2019
 Response via : Initial Calibration
 Integrator: ChemStation 6890 Scale Mode: Large solvent peaks clipped

Volume Inj. : 1 µl
 Signal #1 Phase : ZB-MR2 Signal #2 Phase: ZB-MR1
 Signal #1 Info : 30M x 0.32mm x0.2 Signal #2 Info : 30M x 0.32mm x 0.50µm



QEdit

(4) Heptachlor (MA)
 4.311min 43.020 ng/ml m
 response 31266156

(4) Heptachlor #2 (MA)
 5.162min 42.254 ng/ml m
 response 49128101

(+) = Expected Retention Time