

Data Path : Z:\pestpcbsrv\HPCHEM1\ECD\_D\Data\PD060320\  
 Data File : PD058290.D  
 Signal(s) : Signal #1: ECD1A.ch Signal #2: ECD2B.ch  
 Acq On : 03 Jun 2020 09:48  
 Operator : AJ\MA  
 Sample : L2750-07  
 Misc :  
 ALS Vial : 8 Sample Multiplier: 1

Instrument :  
 ECD\_D  
 ClientSampleId :

Integration File signal 1: autoint1.e  
 Integration File signal 2: autoint2.e  
 Quant Time: Jun 03 16:52:23 2020  
 Quant Method : Z:\pestpcbsrv\HPCHEM1\ECD\_D\Method\PD060320CLP.M  
 Quant Title : GC Extractables  
 QLast Update : Wed Jun 03 05:57:37 2020  
 Response via : Initial Calibration  
 Integrator: ChemStation

Volume Inj. : 1 µl  
 Signal #1 Phase : ZB-MR2 Signal #2 Phase: ZB-MR1  
 Signal #1 Info : 30M x 0.32mm x0.2 Signal #2 Info : 30M x 0.32mm x 0.50µm

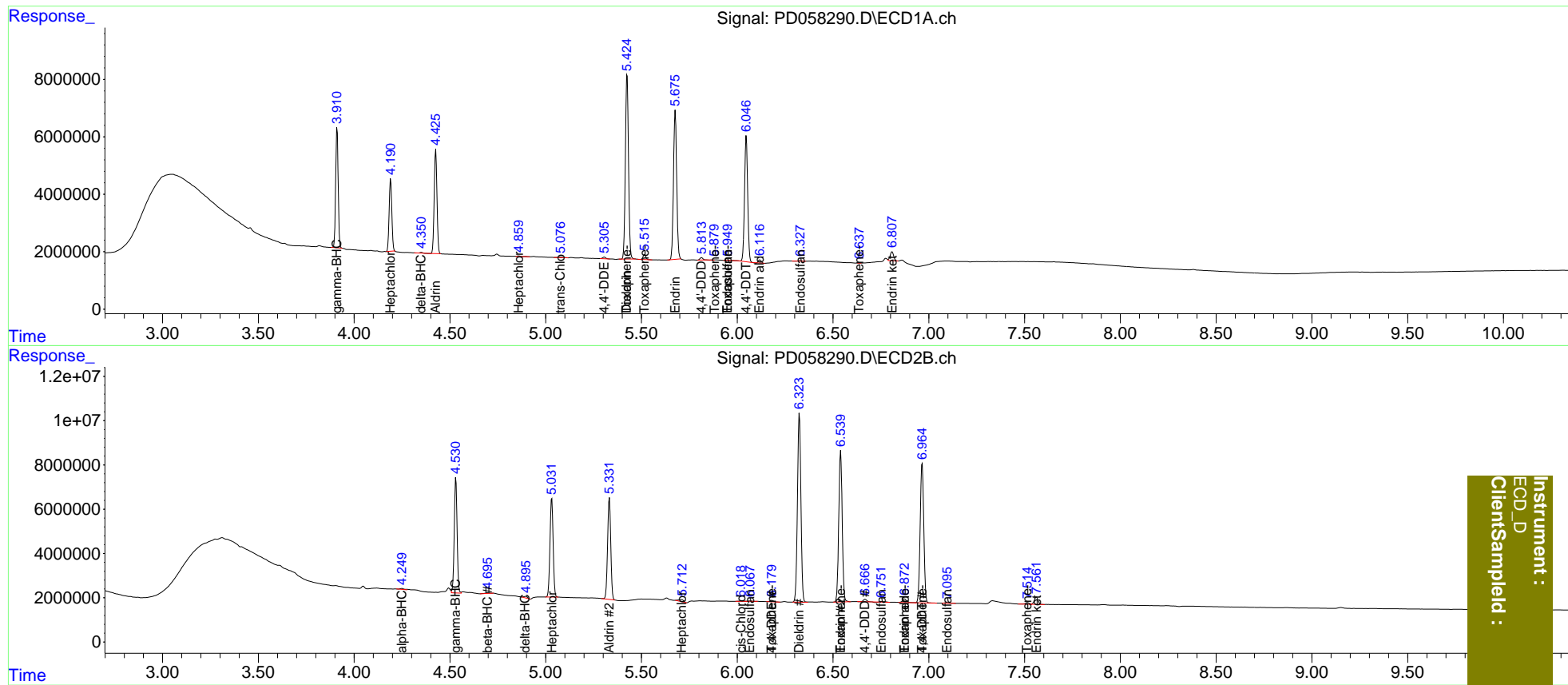
Compound	RT#1	RT#2	Resp#1	Resp#2	ng/ml	ng/ml
-----						
System Monitoring Compounds						
27) SA Decachlor...	0.000	8.870	0	144287	N.D.	<MDL
Target Compounds						
2) A alpha-BHC	3.637	4.250	82167	676678	<MDL	0.214 #
3) MA gamma-BHC...	3.911	4.531	38116305	53696129	17.440	18.993
4) MA Heptachlor	4.191	5.032	24325036	51014340	17.449	19.104
5) MB Aldrin	4.426	5.333	36302083	52509010	18.352	19.517
6) B beta-BHC	4.161	4.697	30022	334269	<MDL	0.274 #
7) B delta-BHC	4.351	4.895	256788	933882	0.115	0.341 #
8) B Heptachlo...	4.860	5.710	339310	1679927	0.193	0.658 #
9) A Endosulfan I	5.186	6.068	140777	305598	<MDL	0.129 #
10) B trans-Chl...	5.078	5.941	222988	145388	0.123	<MDL #
11) B cis-Chlor...	5.133	6.020	151591	343325	<MDL	0.134 #
12) B 4,4'-DDE	5.306	6.180	627606	801907	0.337	0.321
13) MA Dieldrin	5.425	6.324	72757934	106.2E6	39.289	40.094
14) MA Endrin	5.677	6.540	60105590	86033047	39.747	40.066
15) B Endosulfa...	5.950	6.752	230534	223424	0.140	0.101 #
16) A 4,4'-DDD	5.814	6.668	885814	1348671	0.714	0.641
17) MA 4,4'-DDT	6.047	6.965	49821523	82456712	37.825	38.560
18) B Endrin al...	6.118	6.874	1050399	2371987	0.797	1.260 #
19) B Endosulfa...	6.329	7.096	189577	411010	0.119	0.182 #
20) A Methoxychlor	6.638f	0.000	6499	0	<MDL	N.D. #
21) B Endrin ke...	6.809	7.562	4021931	4452258	2.226	1.848
22) Toxaphene-1	5.425	6.180	72757934	801907	7626.245	63.633 #
23) Toxaphene-2	5.516	6.540	1806960	86033047	173.683	5156.976 #
24) Toxaphene-3	5.873	6.874	34891	2371987	4.428	114.578 #
25) Toxaphene-4	5.950	6.965	230534	82456712	8.212	1382.686 #
26) Toxaphene-5	6.638	7.515	6499	1018583	0.199	36.072 #

(f)=RT Delta > 1/2 Window (#)=Amounts differ by > 25% (m)=manual int.

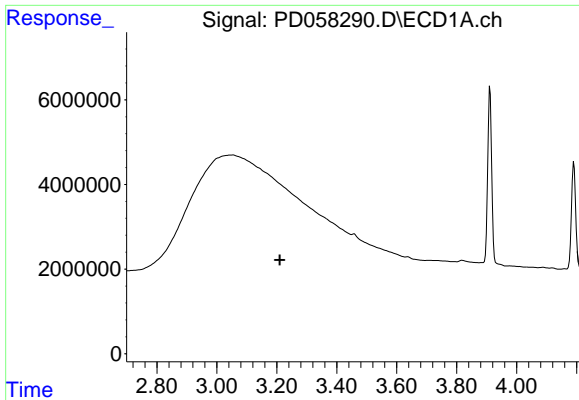
Data Path : Z:\pestpcbsrv\HPCHEM1\ECD\_D\Data\PD060320\  
 Data File : PD058290.D  
 Signal(s) : Signal #1: ECD1A.ch Signal #2: ECD2B.ch  
 Acq On : 03 Jun 2020 09:48  
 Operator : AJ\MA  
 Sample : L2750-07  
 Misc :  
 ALS Vial : 8 Sample Multiplier: 1

Integration File signal 1: autoint1.e  
 Integration File signal 2: autoint2.e  
 Quant Time: Jun 03 16:52:23 2020  
 Quant Method : Z:\pestpcbsrv\HPCHEM1\ECD\_D\Method\PD060320CLP.M  
 Quant Title : GC Extractables  
 QLast Update : Wed Jun 03 05:57:37 2020  
 Response via : Initial Calibration  
 Integrator: ChemStation

Volume Inj. : 1 µl  
 Signal #1 Phase : ZB-MR2 Signal #2 Phase: ZB-MR1  
 Signal #1 Info : 30M x 0.32mm x0.2 Signal #2 Info : 30M x 0.32mm x 0.50µm

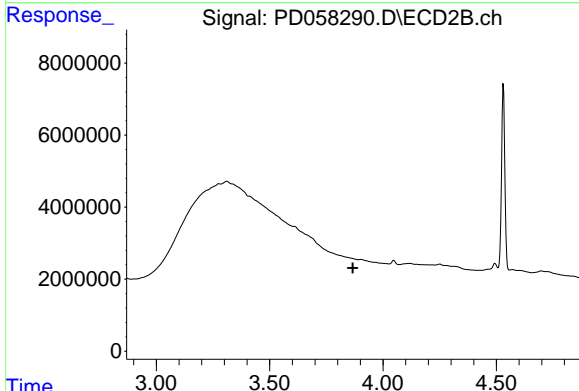


Instrument :  
 ECD\_D  
 ClientSampleId :

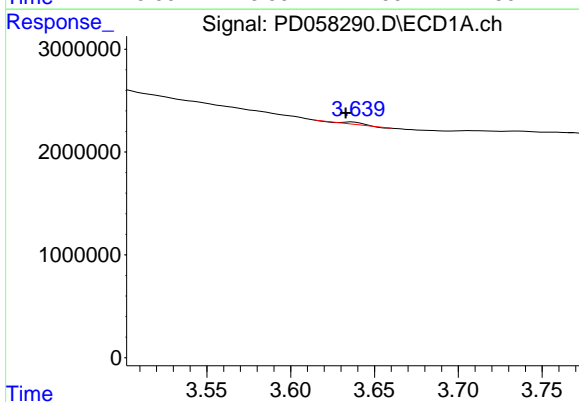


#1 Tetrachloro-m-xylene  
 R.T.: 0.000 min  
 Exp R.T.: 3.210 min  
 Response: 0  
 Conc: N.D.

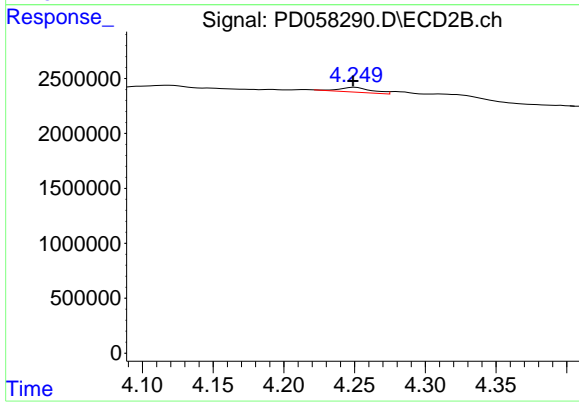
Instrument :  
 ECD\_D  
 ClientSampleId :



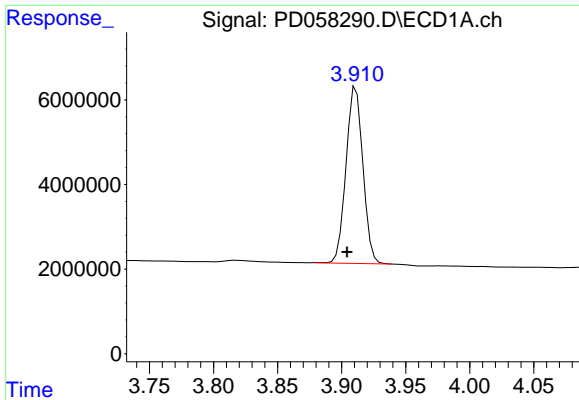
#1 Tetrachloro-m-xylene  
 R.T.: 3.904 min  
 Delta R.T.: 0.037 min  
 Response: -461678  
 Conc: N.D.



#2 alpha-BHC  
 R.T.: 3.637 min  
 Delta R.T.: 0.004 min  
 Response: 82167  
 Conc: N.D.

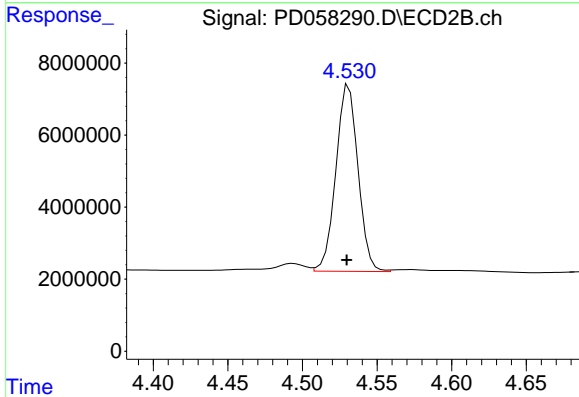


#2 alpha-BHC  
 R.T.: 4.250 min  
 Delta R.T.: 0.002 min  
 Response: 676678  
 Conc: 0.21 ng/ml

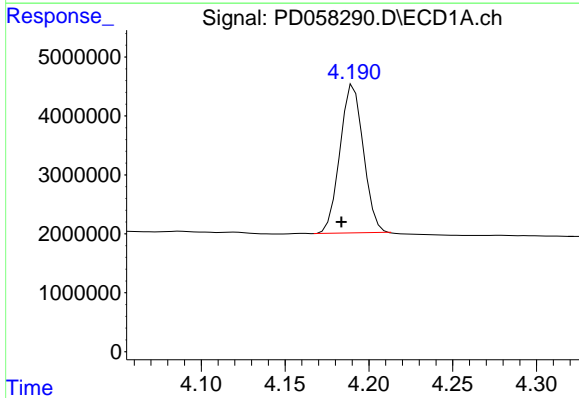


#3 gamma-BHC (Lindane)  
 R.T.: 3.911 min  
 Delta R.T.: 0.007 min  
 Response: 38116305  
 Conc: 17.44 ng/ml

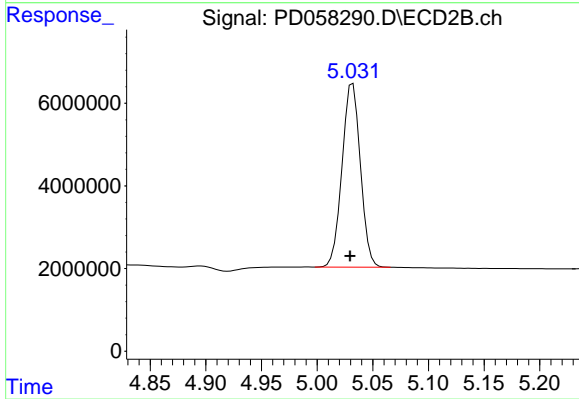
Instrument :  
 ECD\_D  
 ClientSampled :



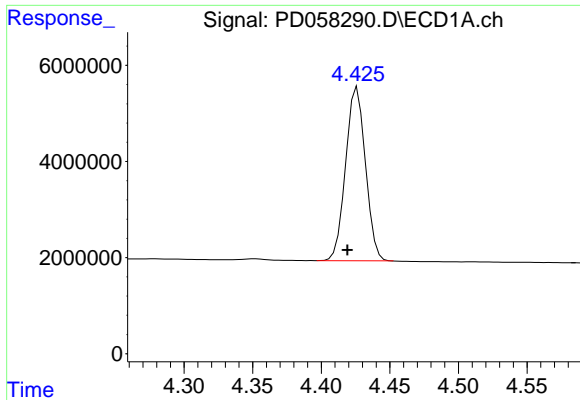
#3 gamma-BHC (Lindane)  
 R.T.: 4.531 min  
 Delta R.T.: 0.002 min  
 Response: 53696129  
 Conc: 18.99 ng/ml



#4 Heptachlor  
 R.T.: 4.191 min  
 Delta R.T.: 0.007 min  
 Response: 24325036  
 Conc: 17.45 ng/ml

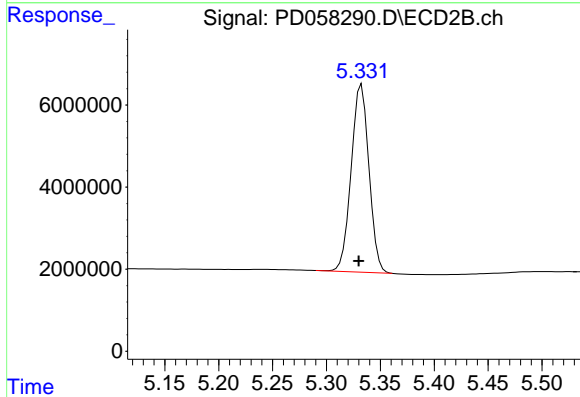


#4 Heptachlor  
 R.T.: 5.032 min  
 Delta R.T.: 0.002 min  
 Response: 51014340  
 Conc: 19.10 ng/ml

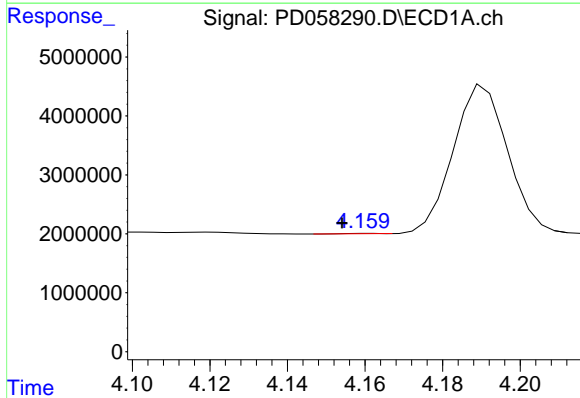


#5 Aldrin  
 R.T.: 4.426 min  
 Delta R.T.: 0.007 min  
 Response: 36302083  
 Conc: 18.35 ng/ml

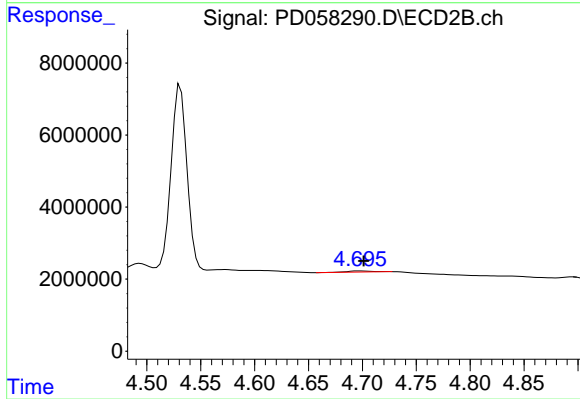
Instrument :  
 ECD\_D  
 ClientSampled :



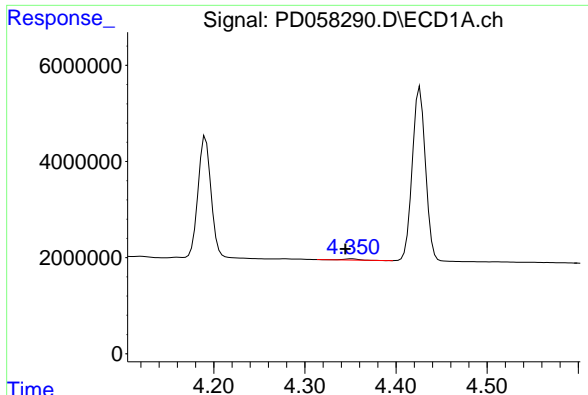
#5 Aldrin  
 R.T.: 5.333 min  
 Delta R.T.: 0.003 min  
 Response: 52509010  
 Conc: 19.52 ng/ml



#6 beta-BHC  
 R.T.: 4.161 min  
 Delta R.T.: 0.007 min  
 Response: 30022  
 Conc: N.D.

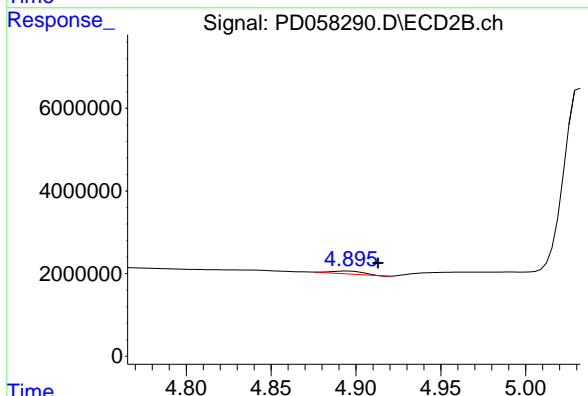


#6 beta-BHC  
 R.T.: 4.697 min  
 Delta R.T.: -0.004 min  
 Response: 334269  
 Conc: 0.27 ng/ml

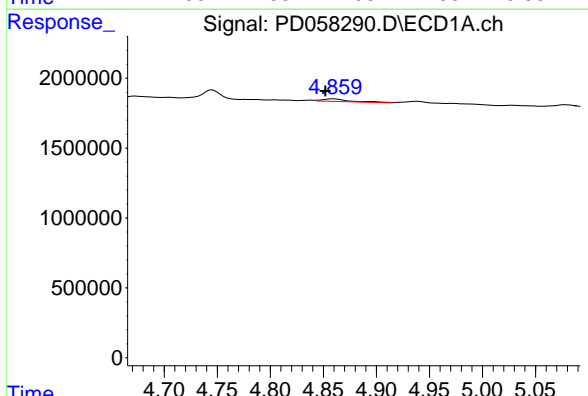


#7 delta-BHC  
 R.T.: 4.351 min  
 Delta R.T.: 0.007 min  
 Response: 256788  
 Conc: 0.11 ng/ml

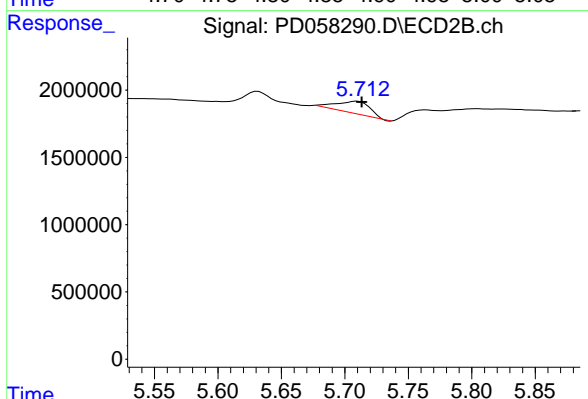
Instrument :  
 ECD\_D  
 ClientSampleId :



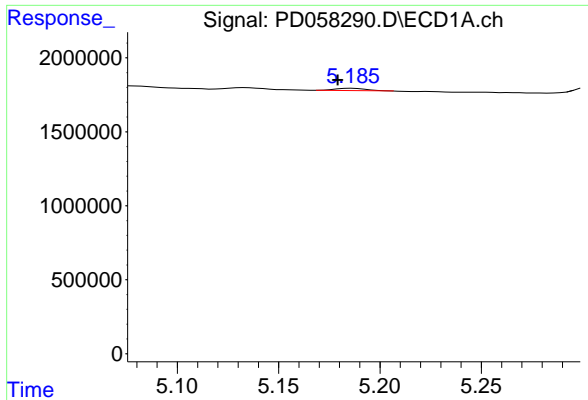
#7 delta-BHC  
 R.T.: 4.895 min  
 Delta R.T.: -0.018 min  
 Response: 933882  
 Conc: 0.34 ng/ml



#8 Heptachlor epoxide  
 R.T.: 4.860 min  
 Delta R.T.: 0.008 min  
 Response: 339310  
 Conc: 0.19 ng/ml

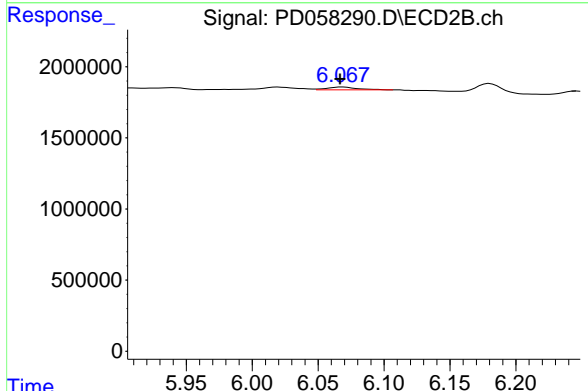


#8 Heptachlor epoxide  
 R.T.: 5.710 min  
 Delta R.T.: -0.003 min  
 Response: 1679927  
 Conc: 0.66 ng/ml

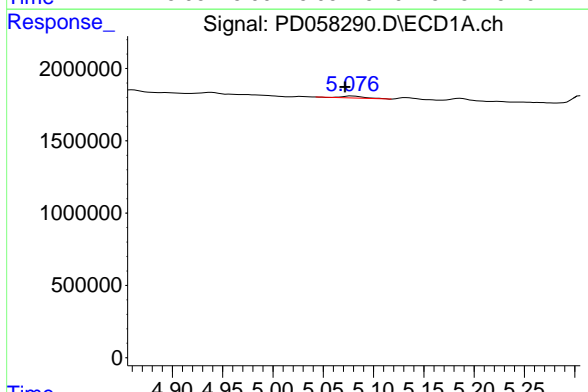


#9 Endosulfan I  
 R.T.: 5.186 min  
 Delta R.T.: 0.007 min  
 Response: 140777  
 Conc: N.D.

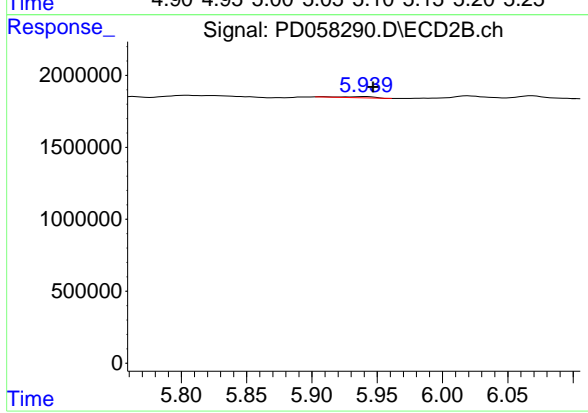
Instrument :  
 ECD\_D  
 ClientSampleId :



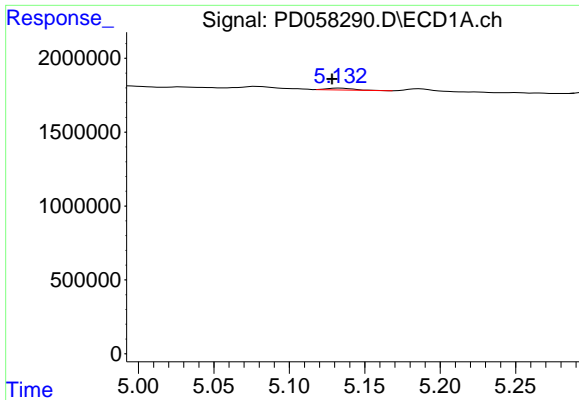
#9 Endosulfan I  
 R.T.: 6.068 min  
 Delta R.T.: 0.002 min  
 Response: 305598  
 Conc: 0.13 ng/ml



#10 trans-Chlordane  
 R.T.: 5.078 min  
 Delta R.T.: 0.006 min  
 Response: 222988  
 Conc: 0.12 ng/ml

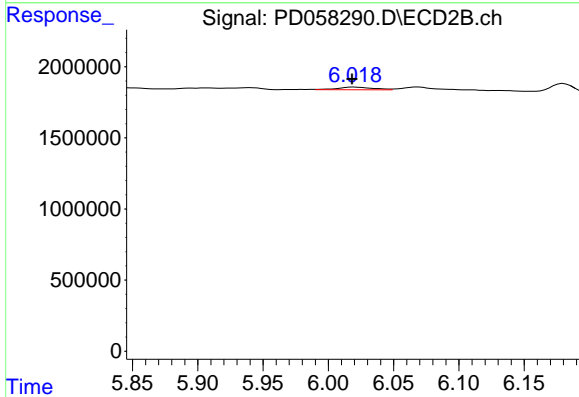


#10 trans-Chlordane  
 R.T.: 5.941 min  
 Delta R.T.: -0.006 min  
 Response: 145388  
 Conc: N.D.

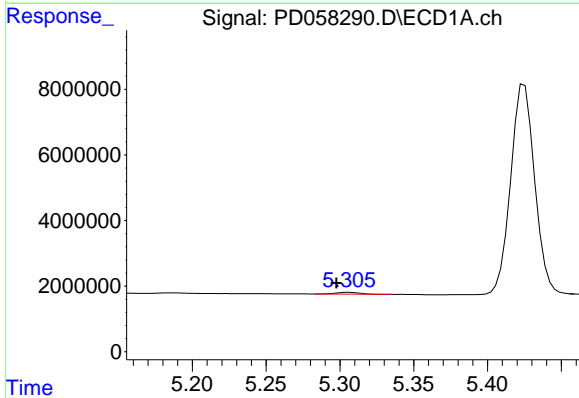


#11 cis-Chlordane  
 R.T.: 5.133 min  
 Delta R.T.: 0.005 min  
 Response: 151591  
 Conc: N.D.

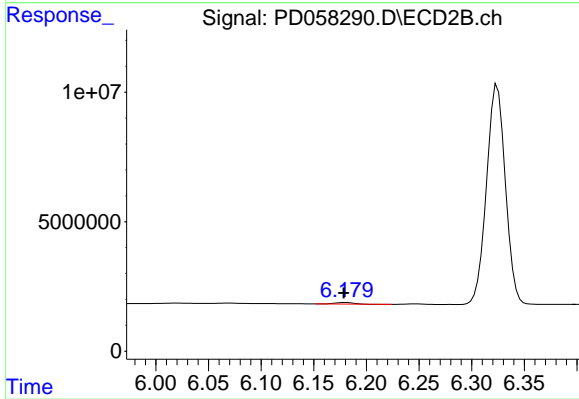
Instrument :  
 ECD\_D  
 ClientSampleId :



#11 cis-Chlordane  
 R.T.: 6.020 min  
 Delta R.T.: 0.002 min  
 Response: 343325  
 Conc: 0.13 ng/ml

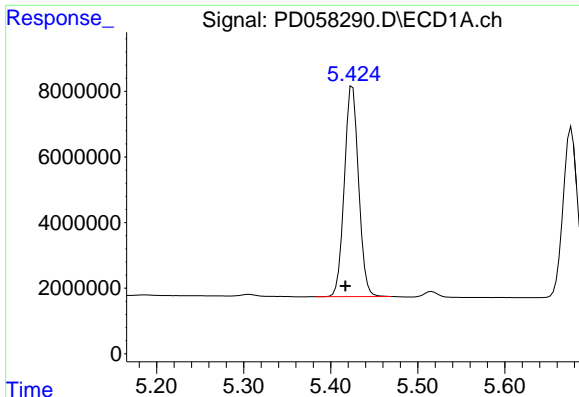


#12 4,4'-DDE  
 R.T.: 5.306 min  
 Delta R.T.: 0.008 min  
 Response: 627606  
 Conc: 0.34 ng/ml



#12 4,4'-DDE  
 R.T.: 6.180 min  
 Delta R.T.: 0.002 min  
 Response: 801907  
 Conc: 0.32 ng/ml

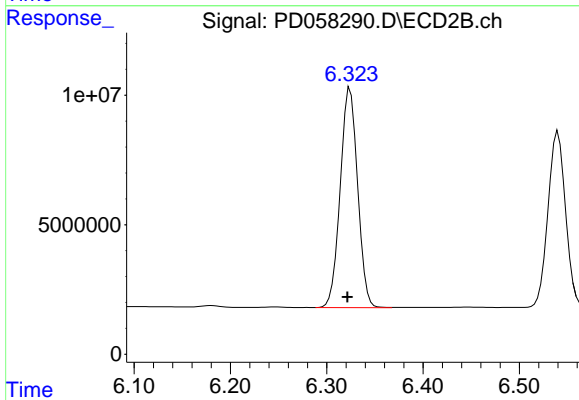




#13 Dieldrin

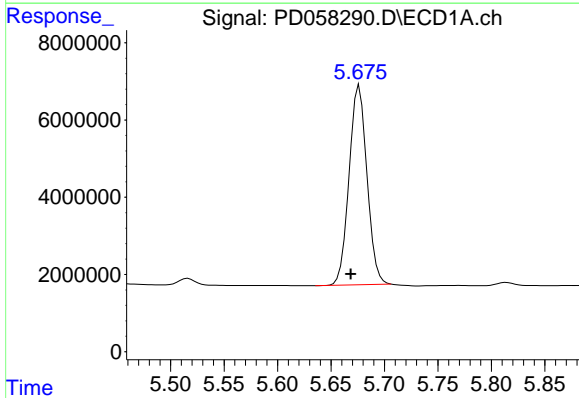
R.T.: 5.425 min  
 Delta R.T.: 0.008 min  
 Response: 72757934  
 Conc: 39.29 ng/ml

Instrument :  
 ECD\_D  
 ClientSampleId :



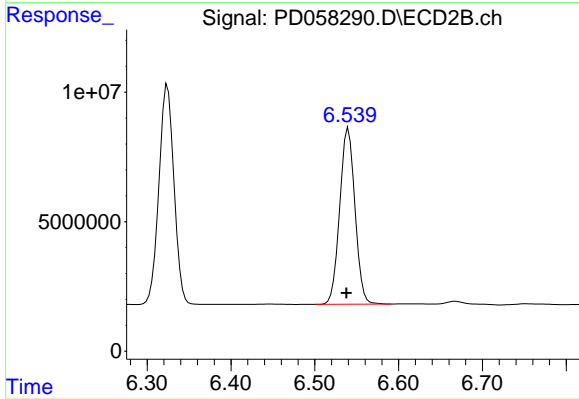
#13 Dieldrin

R.T.: 6.324 min  
 Delta R.T.: 0.003 min  
 Response: 106241492  
 Conc: 40.09 ng/ml



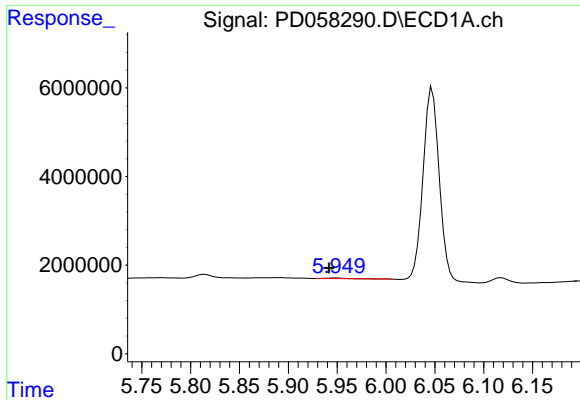
#14 Endrin

R.T.: 5.677 min  
 Delta R.T.: 0.008 min  
 Response: 60105590  
 Conc: 39.75 ng/ml



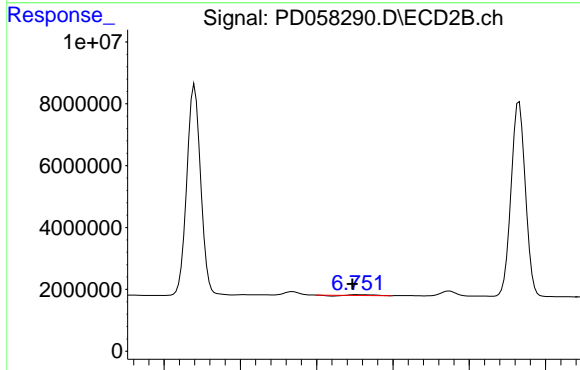
#14 Endrin

R.T.: 6.540 min  
 Delta R.T.: 0.002 min  
 Response: 86033047  
 Conc: 40.07 ng/ml

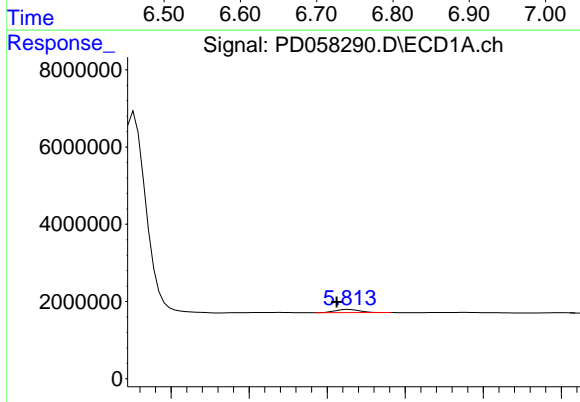


#15 Endosulfan II  
 R.T.: 5.950 min  
 Delta R.T.: 0.008 min  
 Response: 230534  
 Conc: 0.14 ng/ml

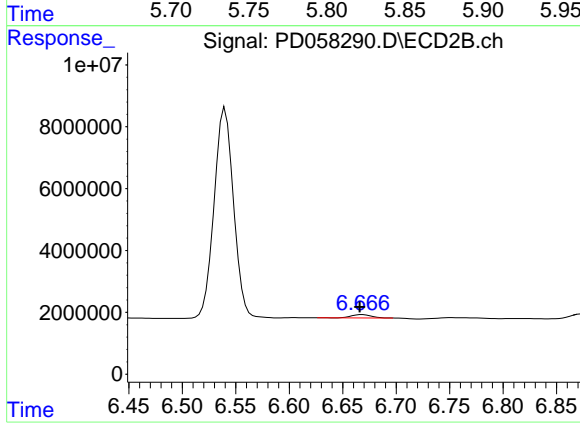
Instrument :  
 ECD\_D  
 ClientSampleId :



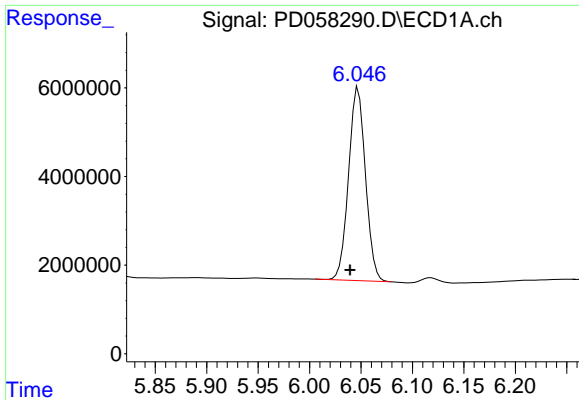
#15 Endosulfan II  
 R.T.: 6.752 min  
 Delta R.T.: 0.005 min  
 Response: 223424  
 Conc: 0.10 ng/ml



#16 4,4'-DDD  
 R.T.: 5.814 min  
 Delta R.T.: 0.008 min  
 Response: 885814  
 Conc: 0.71 ng/ml



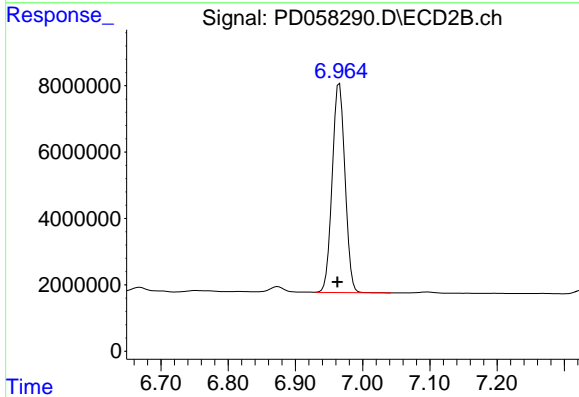
#16 4,4'-DDD  
 R.T.: 6.668 min  
 Delta R.T.: 0.002 min  
 Response: 1348671  
 Conc: 0.64 ng/ml



#17 4,4'-DDT

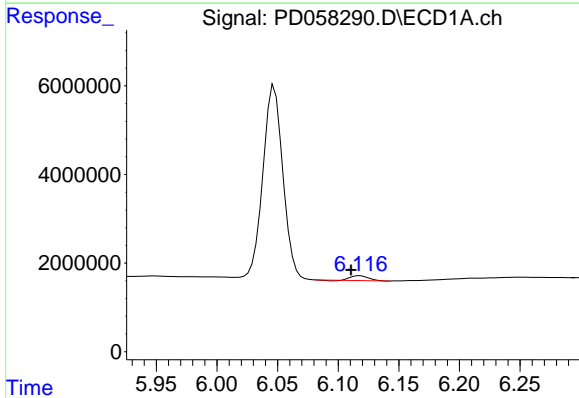
R.T.: 6.047 min  
Delta R.T.: 0.008 min  
Response: 49821523  
Conc: 37.83 ng/ml

Instrument :  
ECD\_D  
ClientSampled :



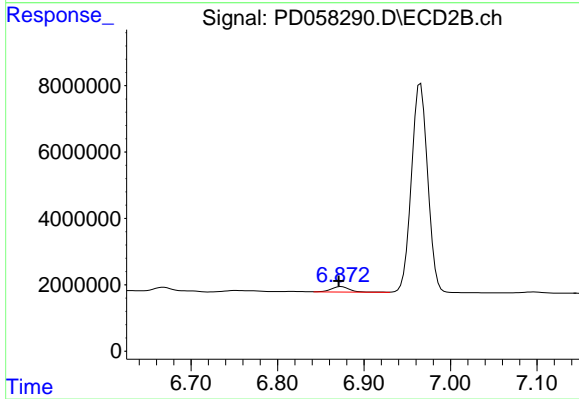
#17 4,4'-DDT

R.T.: 6.965 min  
Delta R.T.: 0.003 min  
Response: 82456712  
Conc: 38.56 ng/ml



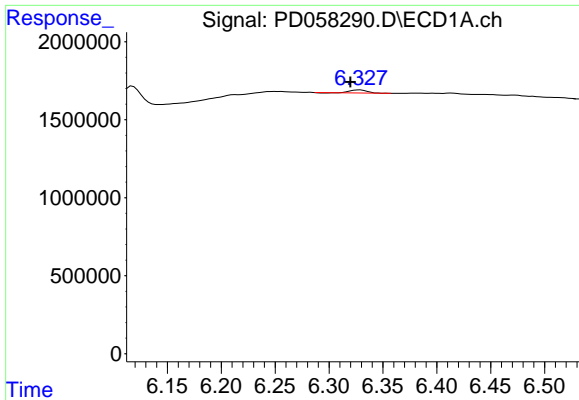
#18 Endrin aldehyde

R.T.: 6.118 min  
Delta R.T.: 0.007 min  
Response: 1050399  
Conc: 0.80 ng/ml



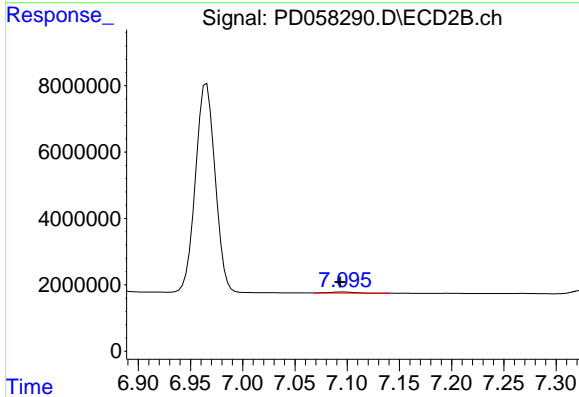
#18 Endrin aldehyde

R.T.: 6.874 min  
Delta R.T.: 0.003 min  
Response: 2371987  
Conc: 1.26 ng/ml

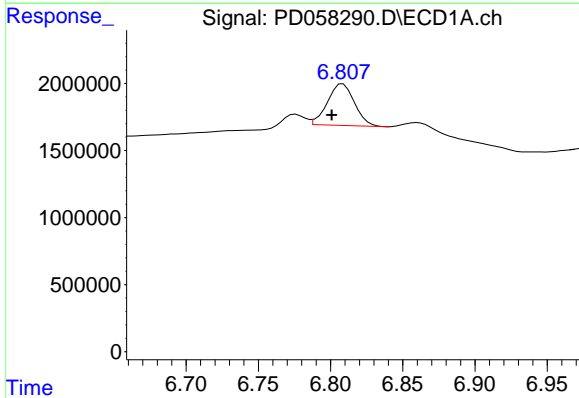


#19 Endosulfan Sulfate  
 R.T.: 6.329 min  
 Delta R.T.: 0.009 min  
 Response: 189577  
 Conc: 0.12 ng/ml

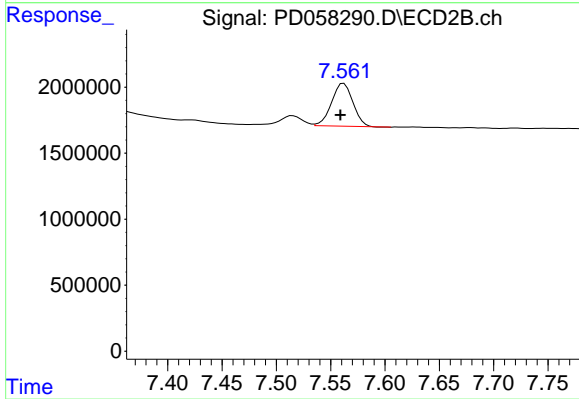
Instrument :  
 ECD\_D  
 ClientSampled :



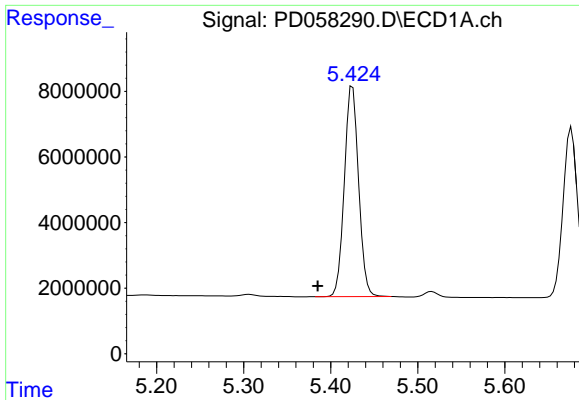
#19 Endosulfan Sulfate  
 R.T.: 7.096 min  
 Delta R.T.: 0.003 min  
 Response: 411010  
 Conc: 0.18 ng/ml



#21 Endrin ketone  
 R.T.: 6.809 min  
 Delta R.T.: 0.008 min  
 Response: 4021931  
 Conc: 2.23 ng/ml

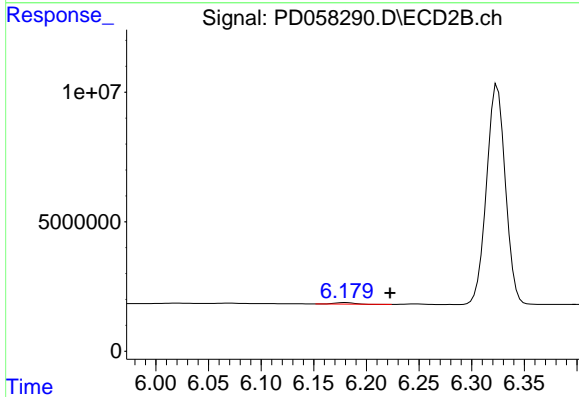


#21 Endrin ketone  
 R.T.: 7.562 min  
 Delta R.T.: 0.003 min  
 Response: 4452258  
 Conc: 1.85 ng/ml

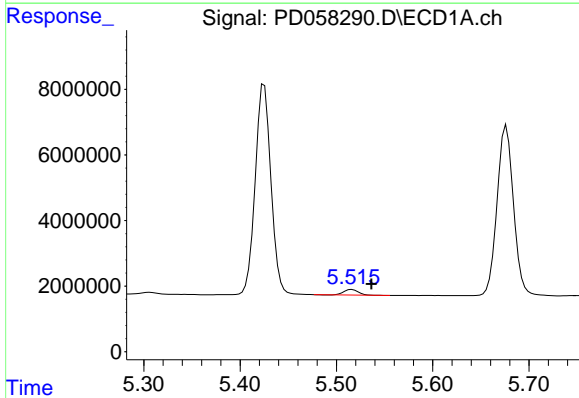


#22 Toxaphene-1  
 R.T.: 5.425 min  
 Delta R.T.: 0.040 min  
 Response: 72757934  
 Conc: 7626.25 ng/ml

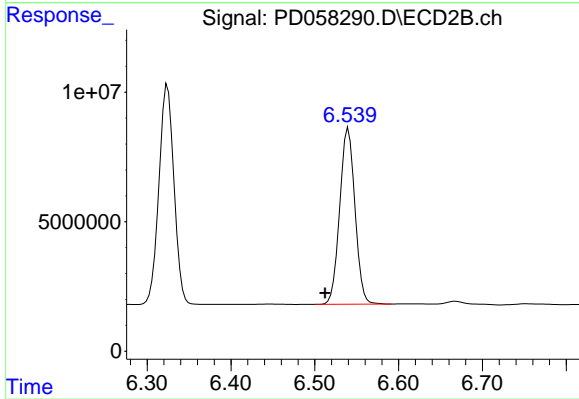
Instrument :  
 ECD\_D  
 ClientSampleId :



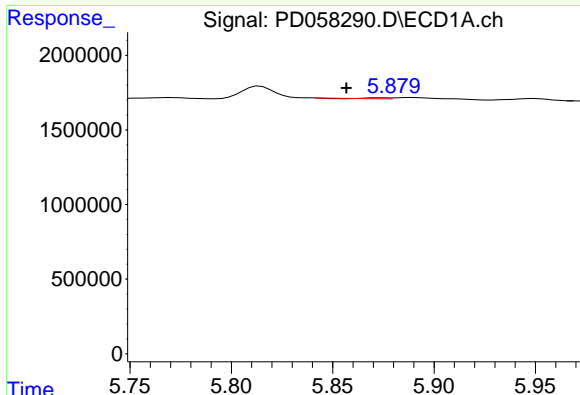
#22 Toxaphene-1  
 R.T.: 6.180 min  
 Delta R.T.: -0.042 min  
 Response: 801907  
 Conc: 63.63 ng/ml



#23 Toxaphene-2  
 R.T.: 5.516 min  
 Delta R.T.: -0.020 min  
 Response: 1806960  
 Conc: 173.68 ng/ml



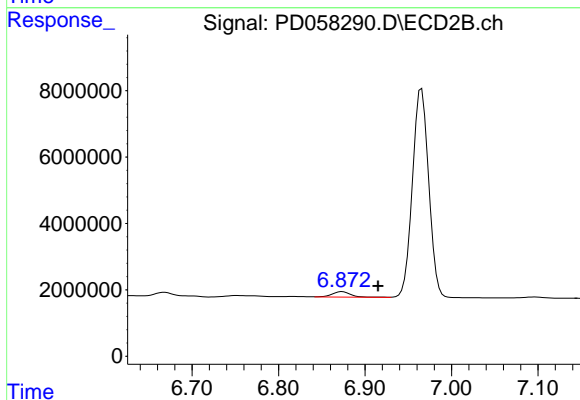
#23 Toxaphene-2  
 R.T.: 6.540 min  
 Delta R.T.: 0.028 min  
 Response: 86033047  
 Conc: 5156.98 ng/ml



#24 Toxaphene-3

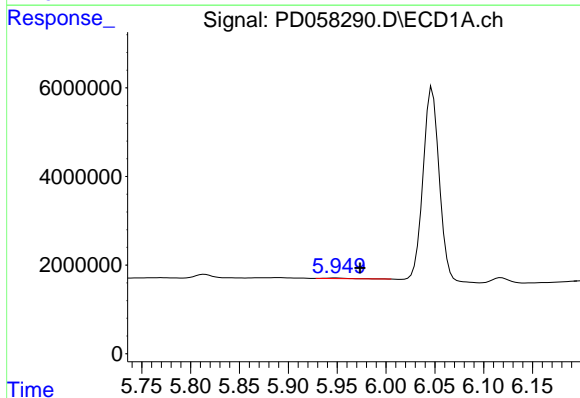
R.T.: 5.873 min  
 Delta R.T.: 0.016 min  
 Response: 34891  
 Conc: 4.43 ng/ml

Instrument :  
 ECD\_D  
 ClientSampleId :



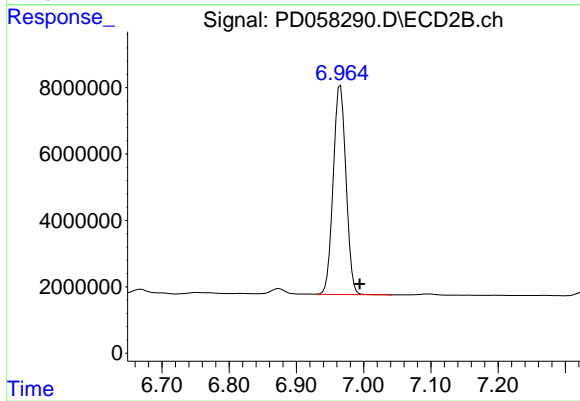
#24 Toxaphene-3

R.T.: 6.874 min  
 Delta R.T.: -0.041 min  
 Response: 2371987  
 Conc: 114.58 ng/ml



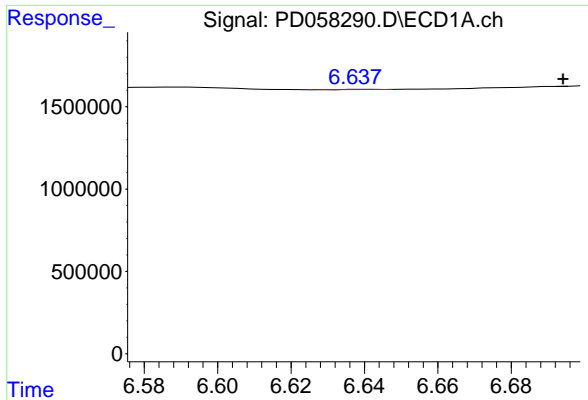
#25 Toxaphene-4

R.T.: 5.950 min  
 Delta R.T.: -0.024 min  
 Response: 230534  
 Conc: 8.21 ng/ml



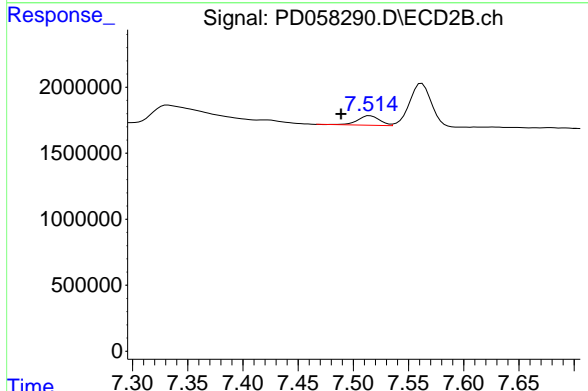
#25 Toxaphene-4

R.T.: 6.965 min  
 Delta R.T.: -0.029 min  
 Response: 82456712  
 Conc: 1382.69 ng/ml

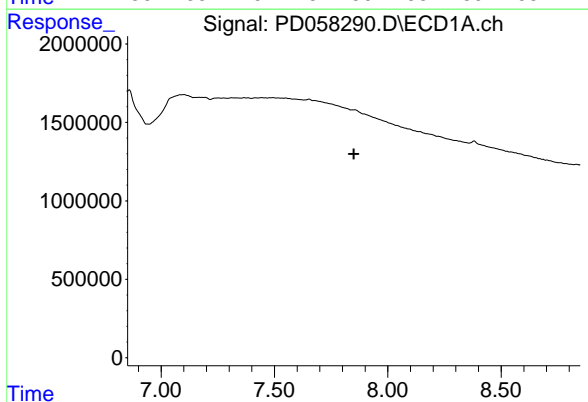


#26 Toxaphene-5  
 R.T.: 6.638 min  
 Delta R.T.: -0.056 min  
 Response: 6499  
 Conc: 0.20 ng/ml

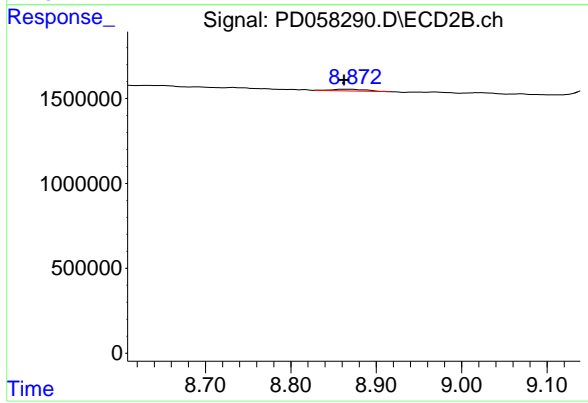
Instrument :  
 ECD\_D  
 ClientSampleId :



#26 Toxaphene-5  
 R.T.: 7.515 min  
 Delta R.T.: 0.026 min  
 Response: 1018583  
 Conc: 36.07 ng/ml



#27 Decachlorobiphenyl  
 R.T.: 0.000 min  
 Exp R.T. : 7.851 min  
 Response: 0  
 Conc: N.D.



#27 Decachlorobiphenyl  
 R.T.: 8.870 min  
 Delta R.T.: 0.008 min  
 Response: 144287  
 Conc: N.D.