

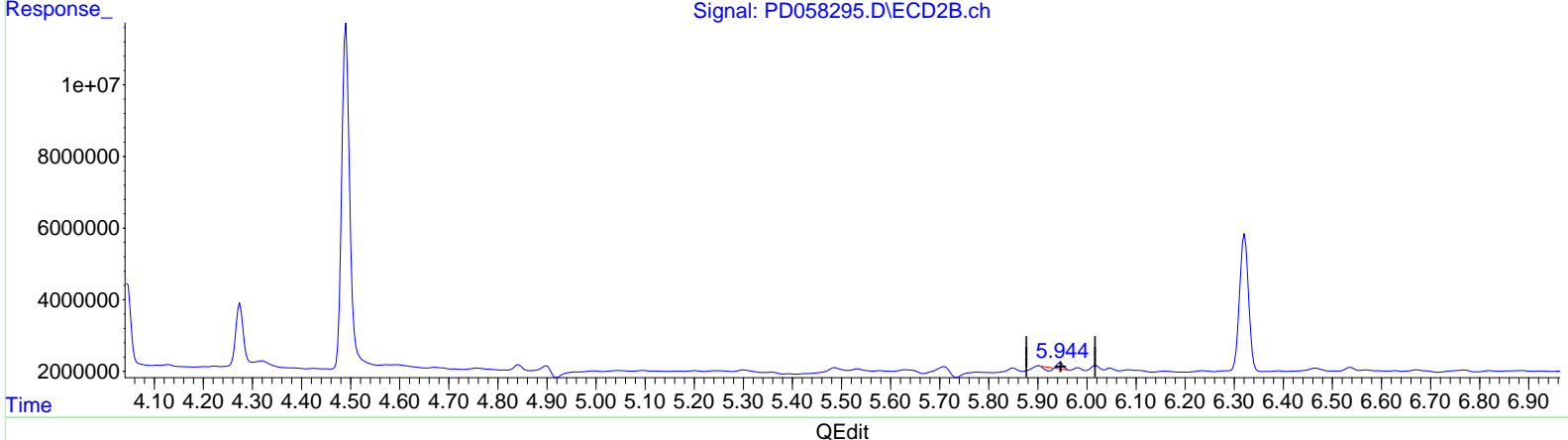
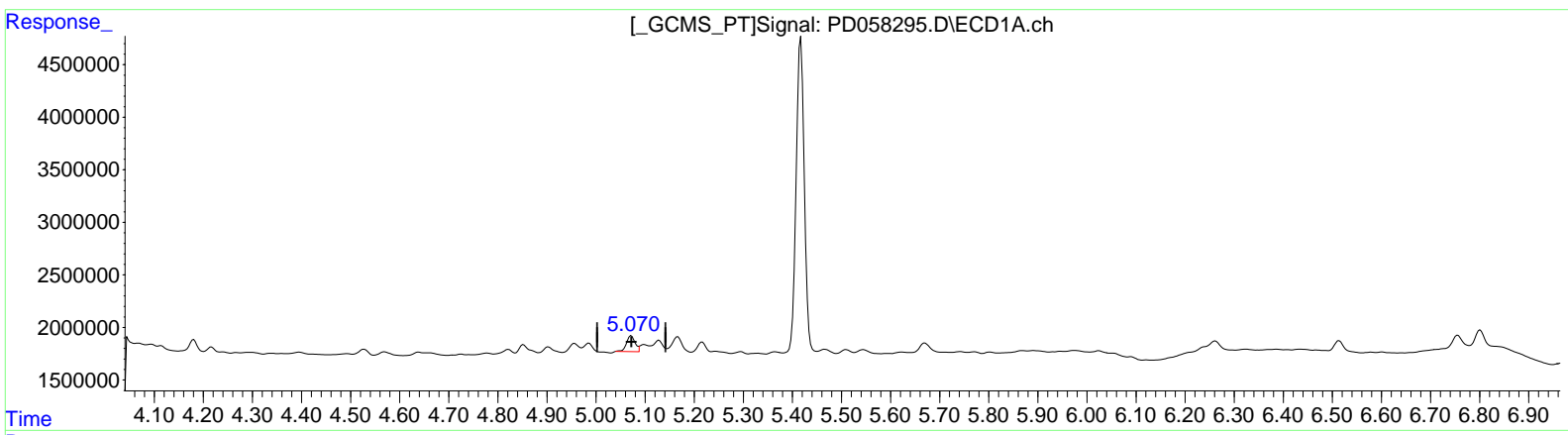
Data Path : Z:\pestpcbsrv\HPCHEM1\ECD_D\Data\PD060320\
 Data File : PD058295.D
 Signal(s) : Signal #1: ECD1A.ch Signal #2: ECD2B.ch
 Acq On : 03 Jun 2020 11:13
 Operator : AJ\MA
 Sample : L2821-01
 Misc :
 ALS Vial : 13 Sample Multiplier: 1

Instrument :
 ECD_D
ClientSampled :
 C5CD5

Manual Integrations
APPROVED
 mohammad
 6/4/2020 12:43:05 PM

Integration File signal 1: autoint1.e
 Integration File signal 2: autoint2.e
 Quant Time: Jun 03 16:47:34 2020
 Quant Method : Z:\pestpcbsrv\HPCHEM1\ECD_D\Method\PD060320CLP.M
 Quant Title : GC Extractables
 QLast Update : Wed Jun 03 05:57:37 2020
 Response via : Initial Calibration
 Integrator: ChemStation

Volume Inj. : 1 µl
 Signal #1 Phase : ZB-MR2 Signal #2 Phase: ZB-MR1
 Signal #1 Info : 30M x 0.32mm x0.2 Signal #2 Info : 30M x 0.32mm x 0.50µm



(10) trans-Chlordane (B)
 5.072min 1.012 ng/ml
 response 1835135

(10) trans-Chlordane #2 (B)
 5.946min 0.273 ng/ml
 response 694802

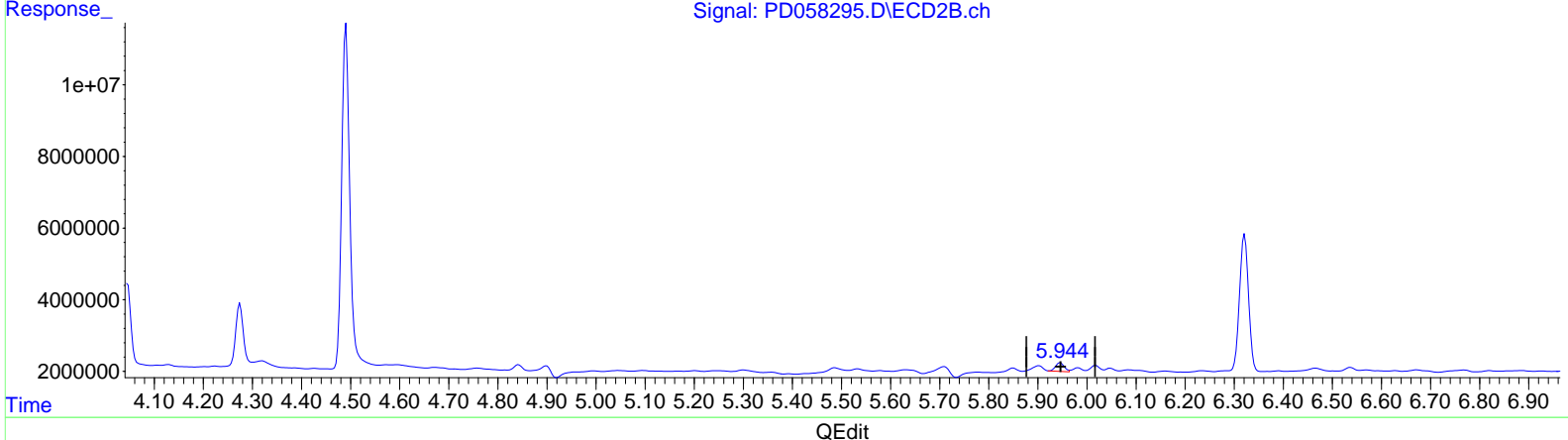
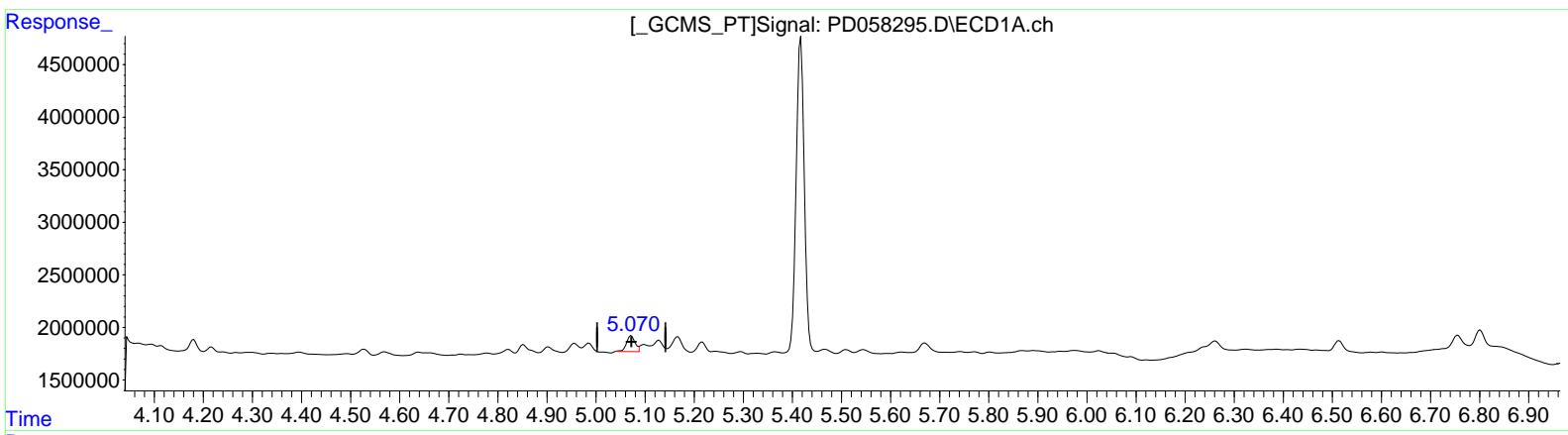
Data Path : Z:\pestpcbsrv\HPCHEM1\ECD_D\Data\PD060320\
 Data File : PD058295.D
 Signal(s) : Signal #1: ECD1A.ch Signal #2: ECD2B.ch
 Acq On : 03 Jun 2020 11:13
 Operator : AJ\MA
 Sample : L2821-01
 Misc :
 ALS Vial : 13 Sample Multiplier: 1

Instrument :
 ECD_D
ClientSampled :
 C5CD5

Manual Integrations
APPROVED
 mohammad
 6/4/2020 12:43:05 PM

Integration File signal 1: autoint1.e
 Integration File signal 2: autoint2.e
 Quant Time: Jun 03 16:47:34 2020
 Quant Method : Z:\pestpcbsrv\HPCHEM1\ECD_D\Method\PD060320CLP.M
 Quant Title : GC Extractables
 QLast Update : Wed Jun 03 05:57:37 2020
 Response via : Initial Calibration
 Integrator: ChemStation

Volume Inj. : 1 µl
 Signal #1 Phase : ZB-MR2 Signal #2 Phase: ZB-MR1
 Signal #1 Info : 30M x 0.32mm x0.2 Signal #2 Info : 30M x 0.32mm x 0.50µm



(10) trans-Chlordane (B)

5.072min 1.012 ng/ml
 response 1835135

(10) trans-Chlordane #2 (B)

5.944min 1.204 ng/ml m
 response 3064312

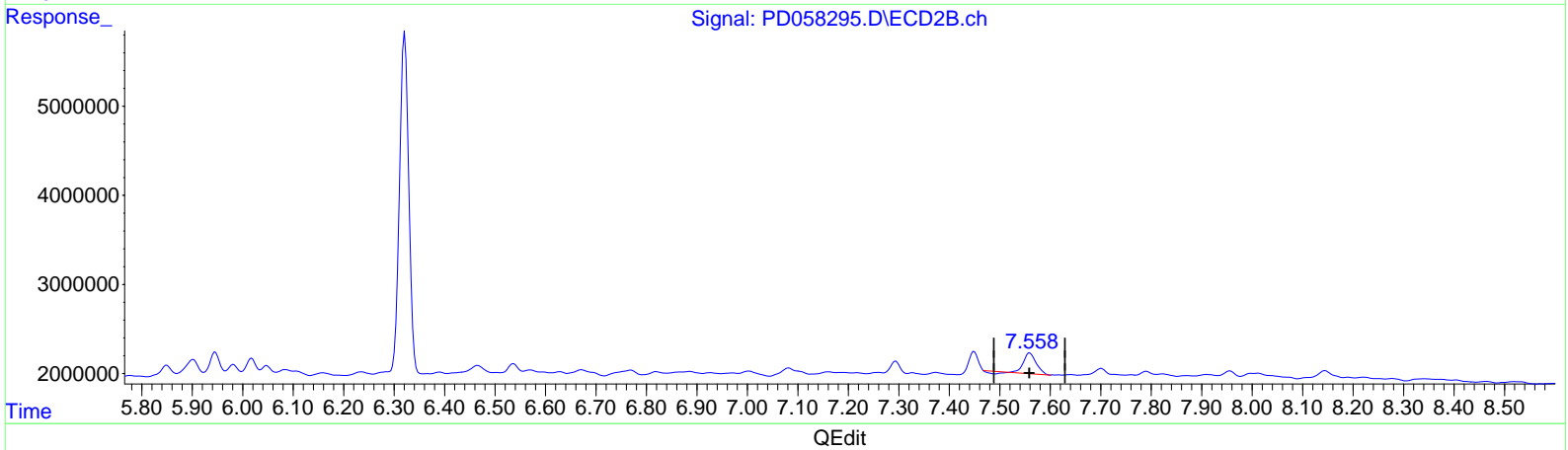
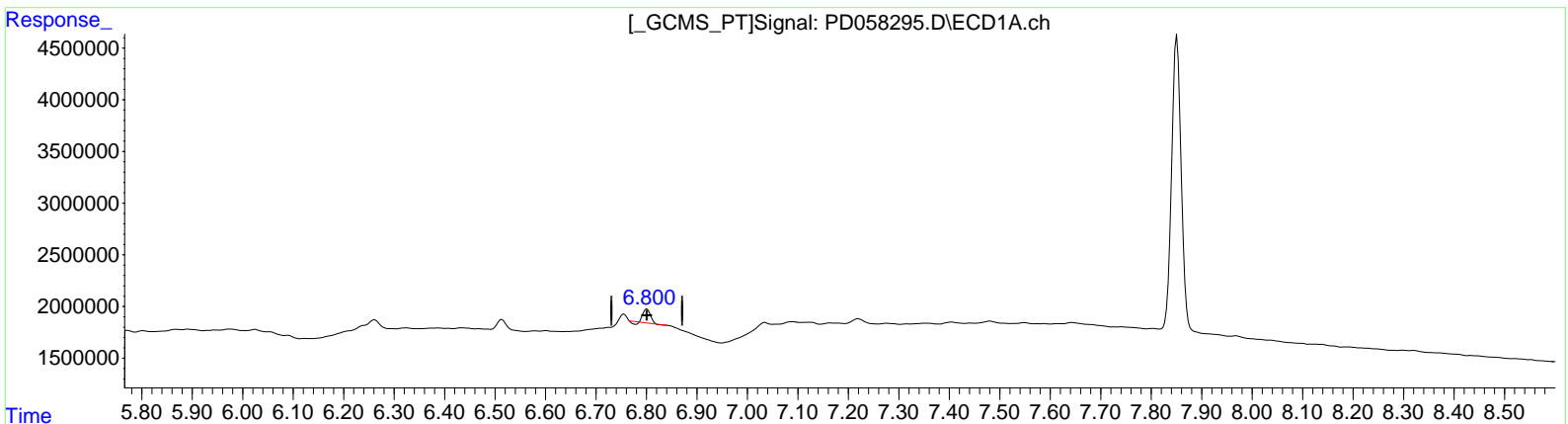
Data Path : Z:\pestpcbsrv\HPCHEM1\ECD_D\Data\PD060320\
 Data File : PD058295.D
 Signal(s) : Signal #1: ECD1A.ch Signal #2: ECD2B.ch
 Acq On : 03 Jun 2020 11:13
 Operator : AJ\MA
 Sample : L2821-01
 Misc :
 ALS Vial : 13 Sample Multiplier: 1

Instrument :
 ECD_D
ClientSampled :
 C5CD5

Manual Integrations
APPROVED
 mohammad
 6/4/2020 12:43:05 PM

Integration File signal 1: autoint1.e
 Integration File signal 2: autoint2.e
 Quant Time: Jun 03 16:47:34 2020
 Quant Method : Z:\pestpcbsrv\HPCHEM1\ECD_D\Method\PD060320CLP.M
 Quant Title : GC Extractables
 QLast Update : Wed Jun 03 05:57:37 2020
 Response via : Initial Calibration
 Integrator: ChemStation

Volume Inj. : 1 µl
 Signal #1 Phase : ZB-MR2 Signal #2 Phase: ZB-MR1
 Signal #1 Info : 30M x 0.32mm x 0.2 Signal #2 Info : 30M x 0.32mm x 0.50µm



(21) Endrin ketone (B)
 6.801min 0.651 ng/ml
 response 1176015

(21) Endrin ketone #2 (B)
 7.560min 1.559 ng/ml
 response 3755556

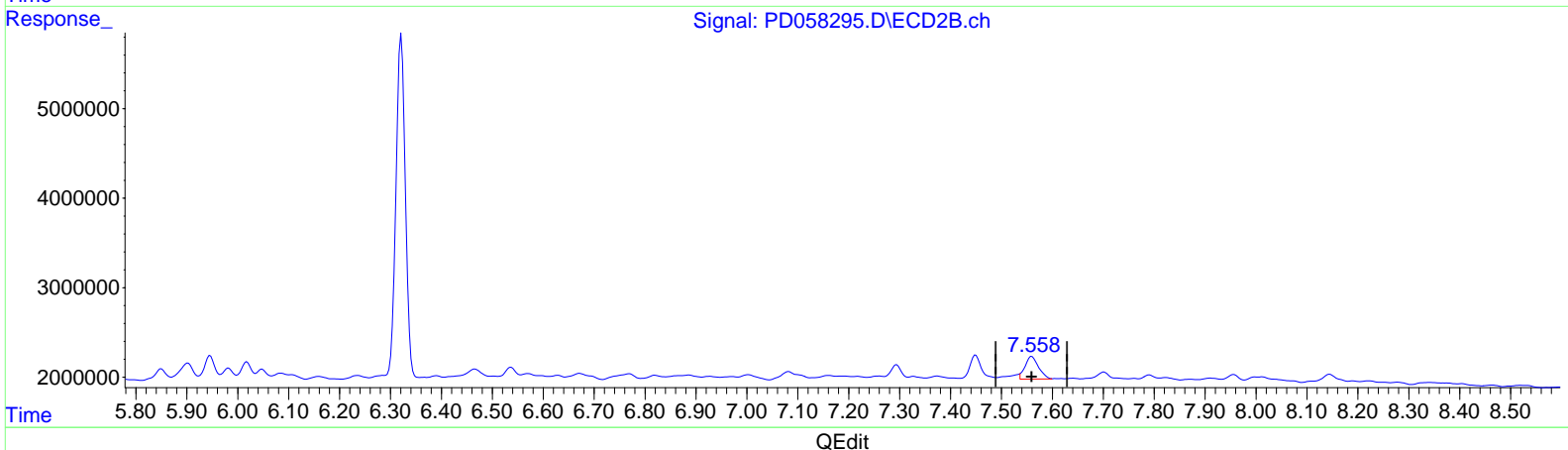
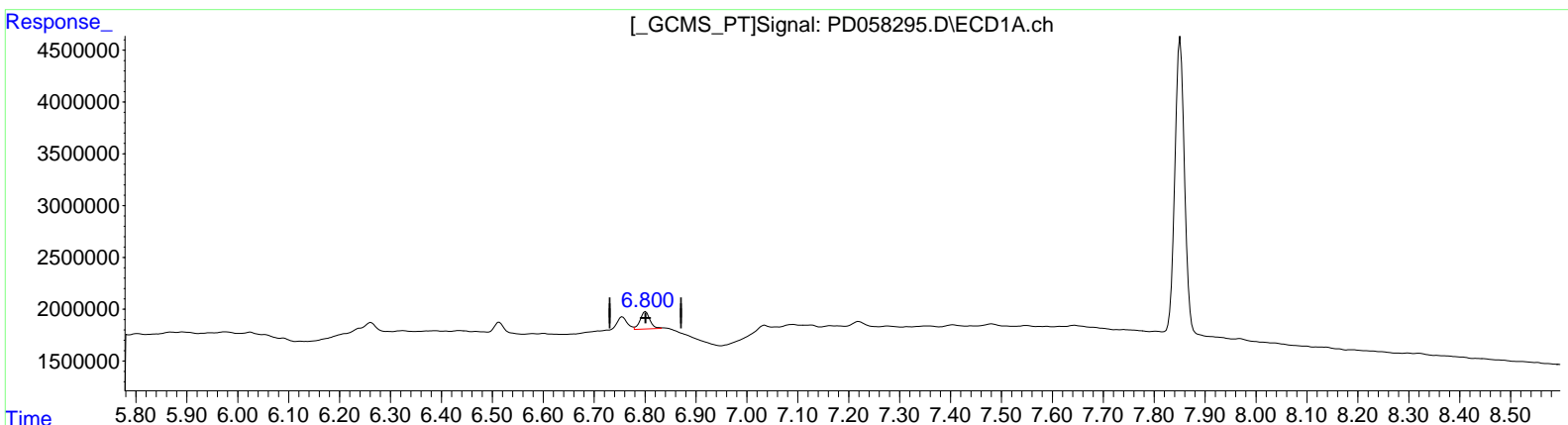
Data Path : Z:\pestpcbsrv\HPCHEM1\ECD_D\Data\PD060320\
 Data File : PD058295.D
 Signal(s) : Signal #1: ECD1A.ch Signal #2: ECD2B.ch
 Acq On : 03 Jun 2020 11:13
 Operator : AJ\MA
 Sample : L2821-01
 Misc :
 ALS Vial : 13 Sample Multiplier: 1

Instrument :
 ECD_D
ClientSampled :
 C5CD5

Manual Integrations
APPROVED
 mohammad
 6/4/2020 12:43:05 PM

Integration File signal 1: autoint1.e
 Integration File signal 2: autoint2.e
 Quant Time: Jun 03 16:47:34 2020
 Quant Method : Z:\pestpcbsrv\HPCHEM1\ECD_D\Method\PD060320CLP.M
 Quant Title : GC Extractables
 QLast Update : Wed Jun 03 05:57:37 2020
 Response via : Initial Calibration
 Integrator: ChemStation

Volume Inj. : 1 µl
 Signal #1 Phase : ZB-MR2 Signal #2 Phase: ZB-MR1
 Signal #1 Info : 30M x 0.32mm x0.2 Signal #2 Info : 30M x 0.32mm x 0.50µm



(21) Endrin ketone (B)
 6.800min 1.231 ng/ml m
 response 2223444

(21) Endrin ketone #2 (B)
 7.558min 1.914 ng/ml m
 response 4609874

Quantitation Report (QT Reviewed)

Data Path : Z:\pestpcbsrv\HPCHEM1\ECD_D\Data\PD060320\
 Data File : PD058295.D
 Signal(s) : Signal #1: ECD1A.ch Signal #2: ECD2B.ch
 Acq On : 03 Jun 2020 11:13
 Operator : AJ\MA
 Sample : L2821-01
 Misc :
 ALS Vial : 13 Sample Multiplier: 1

Instrument :
 ECD_D
 Client Sampled :
 C5CD5

Manual Integrations
 APPROVED

mohammad
 6/4/2020 12:43:05 PM

Integration File signal 1: autoint1.e
 Integration File signal 2: autoint2.e
 Quant Time: Jun 03 16:47:34 2020
 Quant Method : Z:\pestpcbsrv\HPCHEM1\ECD_D\Method\PD060320CLP.M
 Quant Title : GC Extractables
 QLast Update : Wed Jun 03 05:57:37 2020
 Response via : Initial Calibration
 Integrator: ChemStation

Volume Inj. : 1 µl
 Signal #1 Phase : ZB-MR2 Signal #2 Phase: ZB-MR1
 Signal #1 Info : 30M x 0.32mm x 0.2 Signal #2 Info : 30M x 0.32mm x 0.50µm

Compound	RT#1	RT#2	Resp#1	Resp#2	ng/ml	ng/ml

System Monitoring Compounds						
1) SA Tetrachlo...	3.211	3.867	30161517	43709324	20.025	20.712
27) SA Decachlor...	7.851	8.863	37391403	48653149	22.859	22.937
Target Compounds						
10) B trans-Chl...	5.072	5.944	1835135	3064312	1.012	1.204m
11) B cis-Chlor...	5.128	6.018	1505027	1681626	0.828	0.658
13) MA Dieldrin	5.417	6.321	34391511	49132061	18.571	18.542
14) MA Endrin	5.670	6.537	1225603	1396072	0.810	0.650
21) B Endrin ke...	6.800	7.558	2223444	4609874	1.231m	1.914m#

SJ
 06/05/20

(f)=RT Delta > 1/2 Window (#)=Amounts differ by > 25% (m)=manual int.