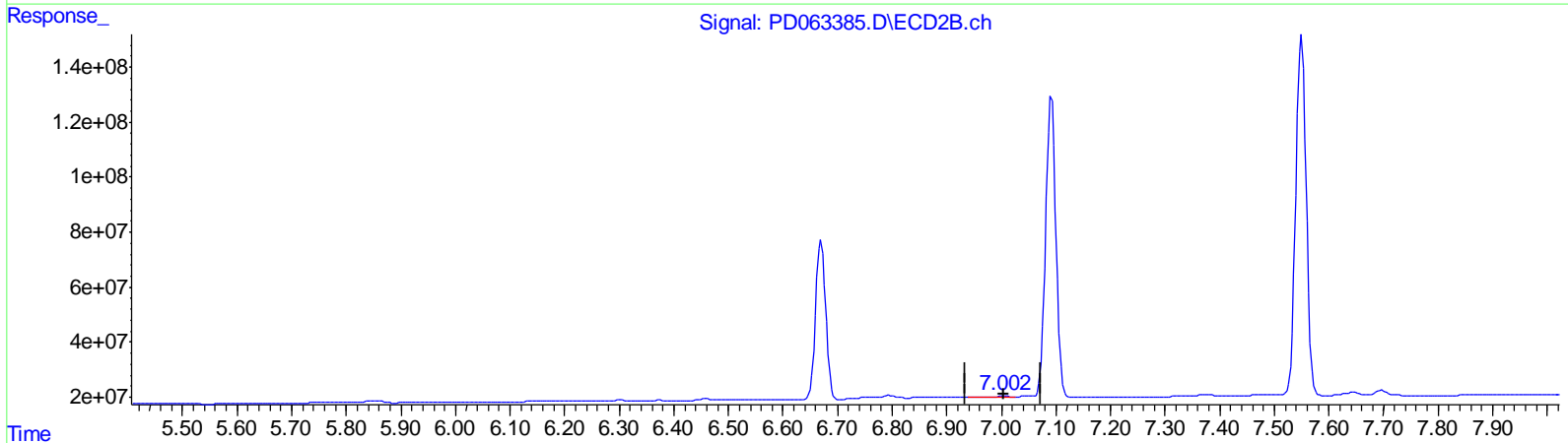
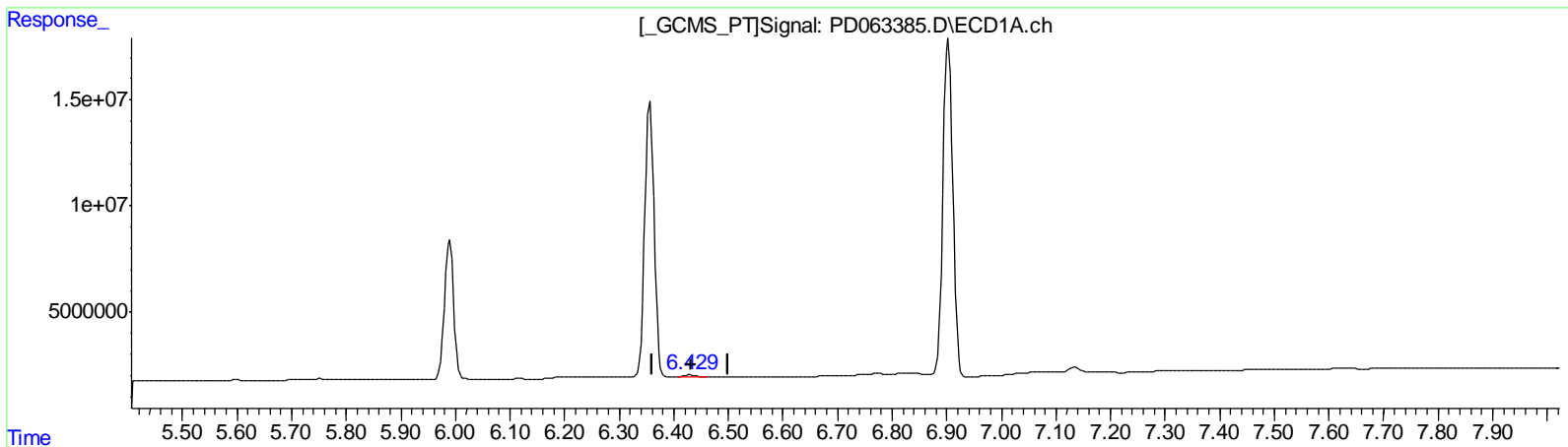


Data Path : Z:\pestpcbsrv\HPCHEM1\ECD_D\Data\PD060321\
 Data File : PD063385.D
 Signal(s) : Signal #1: ECD1A.ch Signal #2: ECD2B.ch
 Acq On : 02 Jun 2021 19:50
 Operator : AR\AJ
 Sample : PEM01
 Misc :
 ALS Vial : 3 Sample Multiplier: 1

Integration File signal 1: autoint1.e
 Integration File signal 2: autoint2.e
 Quant Time: Jun 03 06:11:28 2021
 Quant Method : Z:\pestpcbsrv\HPCHEM1\ECD_D\Method\PD060321CLP.M
 Quant Title : GC Extractables
 QLast Update : Thu Jun 03 06:08:10 2021
 Response via : Initial Calibration
 Integrator: ChemStation

Volume Inj. : 1 µl
 Signal #1 Phase : ZB-MR2 Signal #2 Phase: ZB-MR1
 Signal #1 Info : 30M x 0.32mm x0.2 Signal #2 Info : 30M x 0.32mm x 0.50µm



QEdit

(18) Endrin aldehyde (B)

6.430min 0.828 ng/ml

response 1079197

(18) Endrin aldehyde #2 (B)

7.004min 0.401 ng/ml

response 5290032