

Data Path : Z:\pestpcbsrv\HPCHEM1\ECD_D\Data\PD060323\
 Data File : PD075706.D
 Signal(s) : Signal #1: ECD1A.ch Signal #2: ECD2B.ch
 Acq On : 02 Jun 2023 17:09
 Operator : AR\AJ
 Sample : 02951-06MSD
 Misc :
 ALS Vial : 34 Sample Multiplier: 1

Instrument :
 ECD_D
ClientSampleId :
 EW999MSD

Manual Integrations
APPROVED

Reviewed By :Abdul Mirza 06/05/2023
 Supervised By :Ankita Jodhani 06/05/2023

Integration File signal 1: autoint1.e
 Integration File signal 2: autoint2.e
 Quant Time: Jun 04 21:10:10 2023
 Quant Method : Z:\pestpcbsrv\HPCHEM1\ECD_D\Method\PD060223CLP.M
 Quant Title : GC Extractables
 QLast Update : Fri Jun 02 04:01:43 2023
 Response via : Initial Calibration
 Integrator: ChemStation

Volume Inj. : 1 µl
 Signal #1 Phase : ZB-MR1 Signal #2 Phase: ZB-MR2
 Signal #1 Info : 30M x 0.32mm x0.5 Signal #2 Info : 30M x 0.32mm x 0.25µm

Compound	RT#1	RT#2	Resp#1	Resp#2	ng/ml	ng/ml

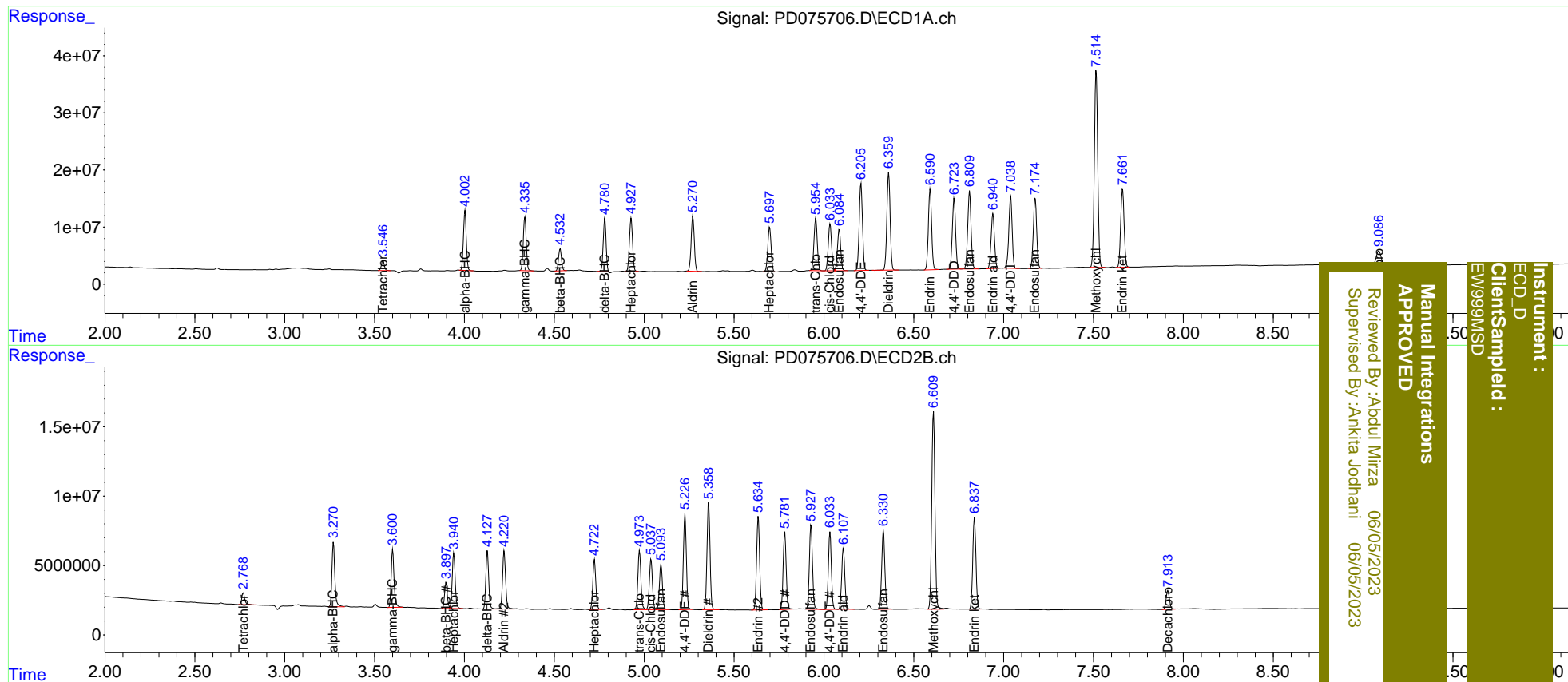
System Monitoring Compounds						
1) SA Tetrachlo...	3.546	2.769	21059568	10056904	10.535m	9.919
2) SA Decachlor...	9.088	7.914	43891210	17728735	19.137	18.878
Target Compounds						
2) A alpha-BHC	4.004	3.272	116.5E6	51309410	34.960	34.303
3) MA gamma-BHC...	4.337	3.601	108.3E6	46323862	34.629	33.372
4) MA Heptachlor	4.928	3.941	113.1E6	46194879	34.878	33.743
5) MB Aldrin	5.271	4.221	117.4E6	49454902	36.231	34.995
6) B beta-BHC	4.533	3.897	44488086	20039563	31.481	29.181m
7) B delta-BHC	4.782	4.128	102.7E6	45552009	32.384	31.423
8) B Heptachlo...	5.698	4.724	100.3E6	41603020	32.819	31.620
9) A Endosulfan I	6.086	5.094	91866381	38282104	34.669	33.149
10) B trans-Chl...	5.955	4.975	117.4E6	50229476	40.185	39.500
11) B cis-Chlor...	6.035	5.039	105.1E6	43526526	34.900	33.395
12) B 4,4'-DDE	6.207	5.228	193.7E6	79280081	69.174	69.702
13) MA Dieldrin	6.361	5.359	218.2E6	91049147	73.327	69.845
14) MA Endrin	6.591	5.635	179.2E6	79479903	71.324	69.231
15) B Endosulfa...	6.811	5.929	176.3E6	74363724	68.887	66.194
16) A 4,4'-DDD	6.725	5.783	156.7E6	65441463	73.840	74.475
17) MA 4,4'-DDT	7.040	6.034	162.2E6	64812171	79.015	79.657
18) B Endrin al...	6.941	6.109	125.2E6	53628870	60.558	59.339
19) B Endosulfa...	7.176	6.331	160.2E6	68868387	67.073	65.683
20) A Methoxychlor	7.515	6.610	448.1E6	177.6E6	359.373	367.934
21) B Endrin ke...	7.662	6.838	184.0E6	81151937	69.530	69.396

(f)=RT Delta > 1/2 Window (#)=Amounts differ by > 25% (m)=manual int.

Data Path : Z:\pestpcbsrv\HPCHEM1\ECD_D\Data\PD060323\
 Data File : PD075706.D
 Signal(s) : Signal #1: ECD1A.ch Signal #2: ECD2B.ch
 Acq On : 02 Jun 2023 17:09
 Operator : AR\AJ
 Sample : 02951-06MSD
 Misc :
 ALS Vial : 34 Sample Multiplier: 1

Integration File signal 1: autoint1.e
 Integration File signal 2: autoint2.e
 Quant Time: Jun 04 21:10:10 2023
 Quant Method : Z:\pestpcbsrv\HPCHEM1\ECD_D\Method\PD060223CLP.M
 Quant Title : GC Extractables
 QLast Update : Fri Jun 02 04:01:43 2023
 Response via : Initial Calibration
 Integrator: ChemStation

Volume Inj. : 1 µl
 Signal #1 Phase : ZB-MR1 Signal #2 Phase: ZB-MR2
 Signal #1 Info : 30M x 0.32mm x0.5 Signal #2 Info : 30M x 0.32mm x 0.25µm



Instrument : ECD_D
 Client/Sampled : EW999MSD
 Manual Integrations APPROVED
 Reviewed By : Aboul Mirza 06/05/2023
 Supervised By : Ankita Jodhani 06/05/2023