

Data Path : Z:\pestpcbsrv\HPCHEM1\ECD\_D\Data\PD060421\  
 Data File : PD063417.D  
 Signal(s) : Signal #1: ECD1A.ch Signal #2: ECD2B.ch  
 Acq On : 03 Jun 2021 14:12  
 Operator : AR\AJ  
 Sample : M2582-01  
 Misc :  
 ALS Vial : 15 Sample Multiplier: 1

**Instrument :**  
 ECD\_D  
**ClientSampleId :**  
 RO-1-VNJ-201

**Manual Integrations**  
**APPROVED**

Ankita  
 6/4/2021 11:25:51 AM

Integration File signal 1: autoint1.e  
 Integration File signal 2: autoint2.e  
 Quant Time: Jun 03 17:20:57 2021  
 Quant Method : Z:\pestpcbsrv\HPCHEM1\ECD\_D\Method\PD060221.M  
 Quant Title : GC Extractables  
 QLast Update : Thu Jun 03 01:33:41 2021  
 Response via : Initial Calibration  
 Integrator: ChemStation

Volume Inj. : 2 µl  
 Signal #1 Phase : ZB-MR2 Signal #2 Phase: ZB-MR1  
 Signal #1 Info : 30M x 0.32mm x0.2 Signal #2 Info : 30M x 0.32mm x 0.50µm

Compound	RT#1	RT#2	Resp#1	Resp#2	ng/ml	ng/ml
-----						
System Monitoring Compounds						
1) SA Tetrachlo...	3.440	3.970	29764515	300.9E6	21.510	22.461
28) SA Decachlor...	8.196	9.026	32088842	314.4E6	20.404	22.749
Target Compounds						
17) MA 4,4'-DDT	6.354	7.091	2082990	18513705	1.442m	1.230m
-----						

(f)=RT Delta > 1/2 Window (#)=Amounts differ by > 25% (m)=manual int.

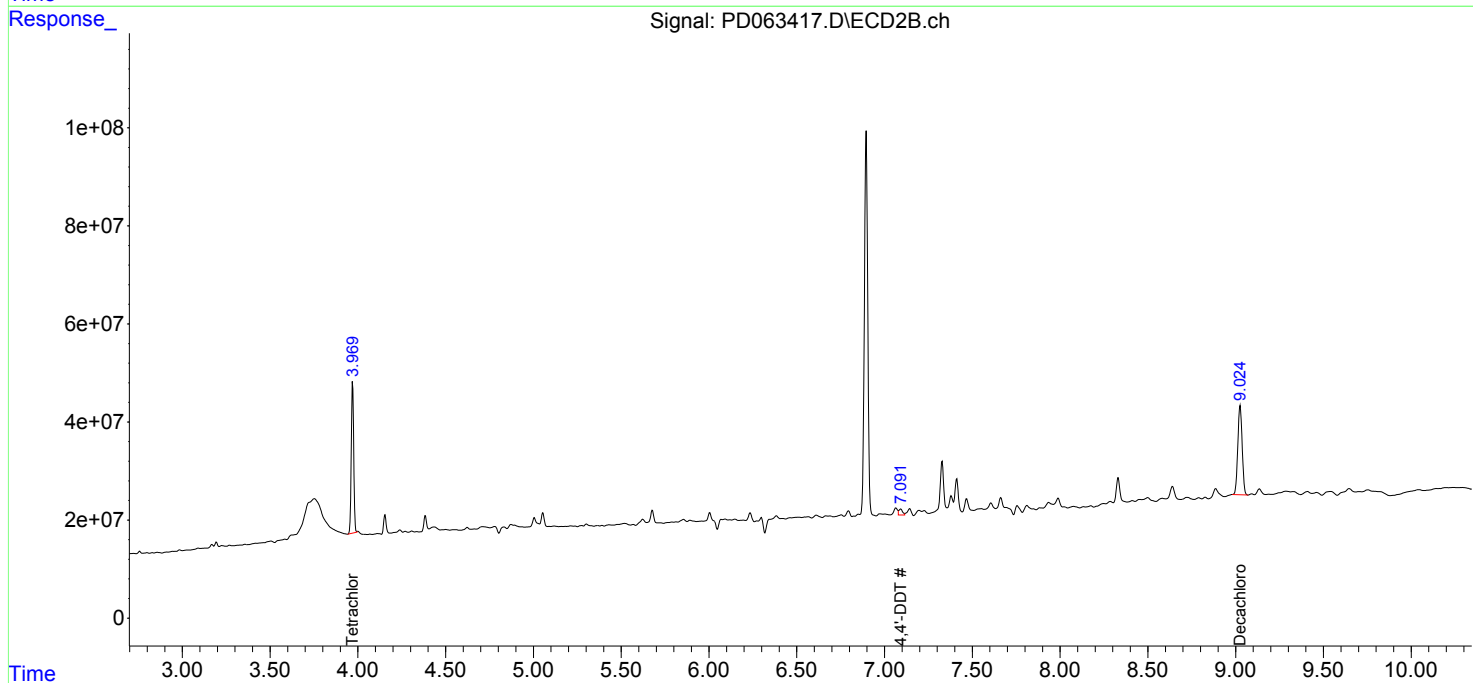
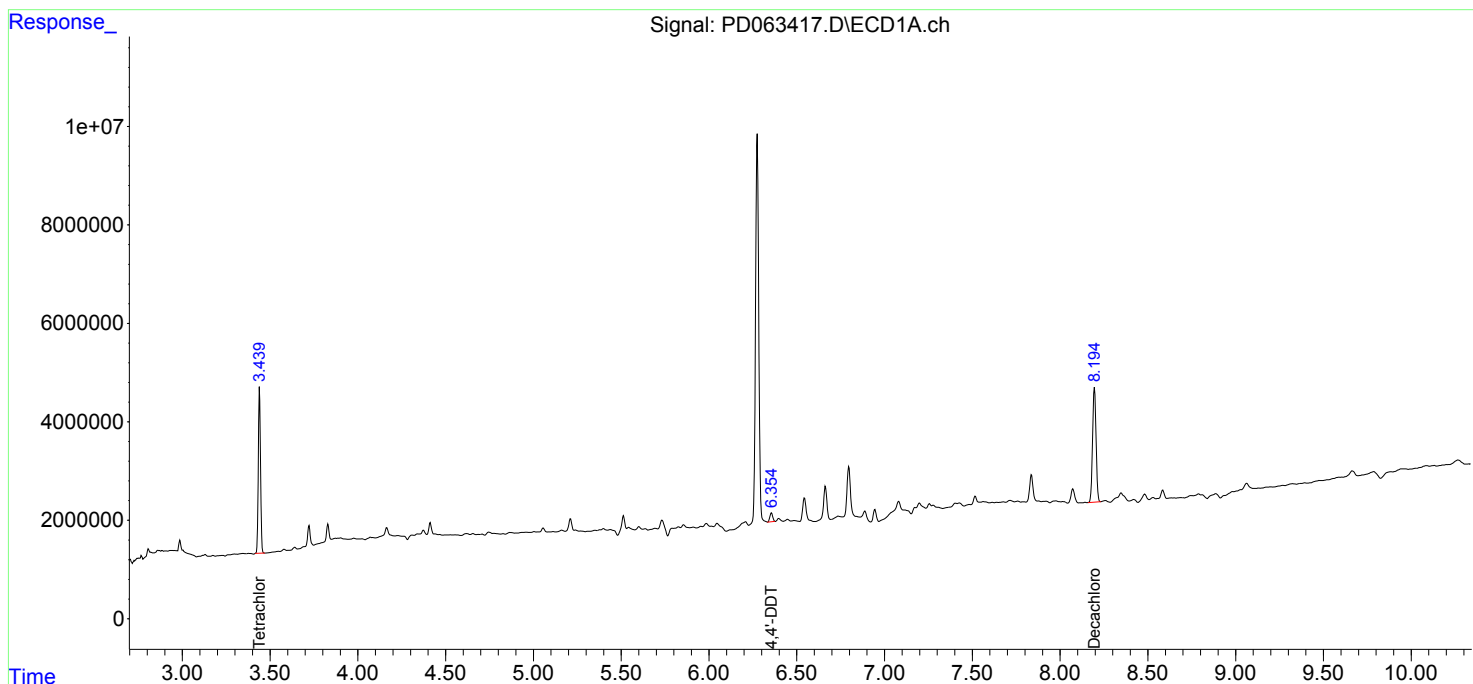
Data Path : Z:\pestpcbsrv\HPCHEM1\ECD\_D\Data\PD060421\  
 Data File : PD063417.D  
 Signal(s) : Signal #1: ECD1A.ch Signal #2: ECD2B.ch  
 Acq On : 03 Jun 2021 14:12  
 Operator : AR\AJ  
 Sample : M2582-01  
 Misc :  
 ALS Vial : 15 Sample Multiplier: 1

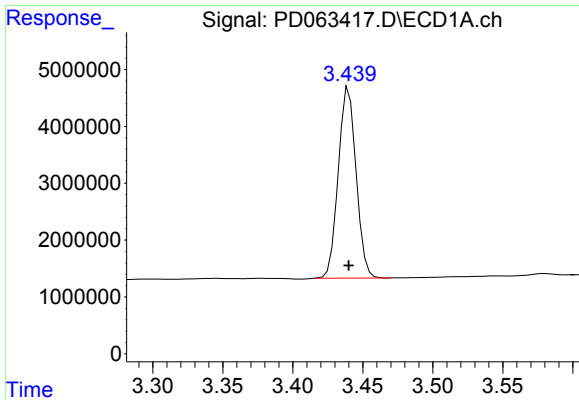
**Instrument :**  
 ECD\_D  
**ClientSampled :**  
 RO-1-VNJ-201

**Manual Integrations**  
**APPROVED**  
 Ankita  
 6/4/2021 11:25:51 AM

Integration File signal 1: autoint1.e  
 Integration File signal 2: autoint2.e  
 Quant Time: Jun 03 17:20:57 2021  
 Quant Method : Z:\pestpcbsrv\HPCHEM1\ECD\_D\Method\PD060221.M  
 Quant Title : GC Extractables  
 QLast Update : Thu Jun 03 01:33:41 2021  
 Response via : Initial Calibration  
 Integrator: ChemStation

Volume Inj. : 2 µl  
 Signal #1 Phase : ZB-MR2 Signal #2 Phase: ZB-MR1  
 Signal #1 Info : 30M x 0.32mm x0.2 Signal #2 Info : 30M x 0.32mm x 0.50µm

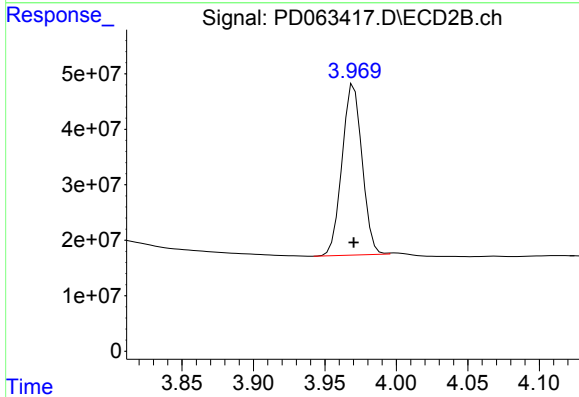




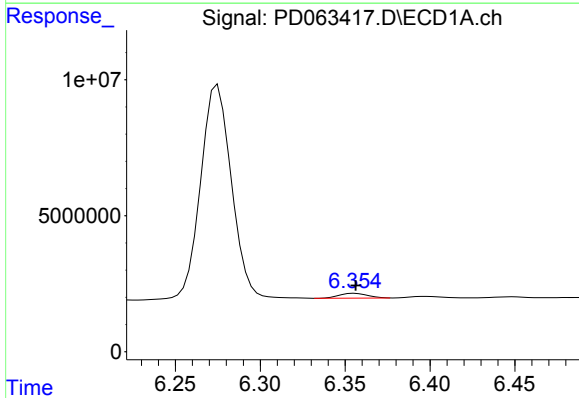
#1 Tetrachloro-m-xylene  
 R.T.: 3.440 min  
 Delta R.T.: 0.000 min  
 Response: 29764515  
 Conc: 21.51 ng/ml

**Instrument :**  
 ECD\_D  
**ClientSampled :**  
 RO-1-VNJ-201

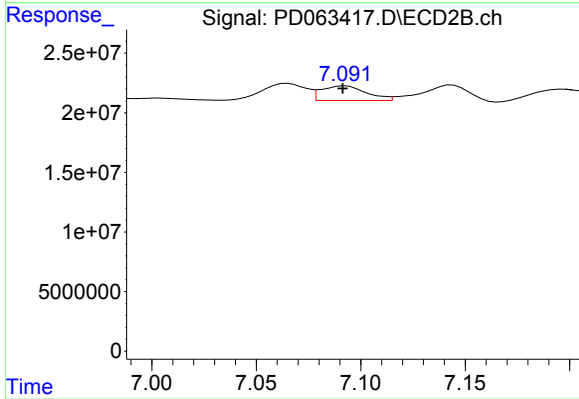
**Manual Integrations**  
**APPROVED**  
 Ankita  
 6/4/2021 11:25:51 AM



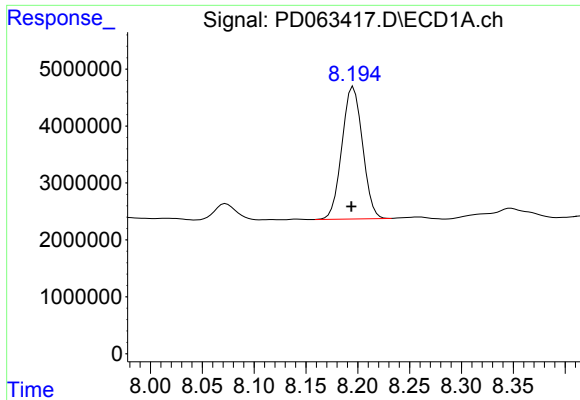
#1 Tetrachloro-m-xylene  
 R.T.: 3.970 min  
 Delta R.T.: 0.000 min  
 Response: 300946738  
 Conc: 22.46 ng/ml



#17 4,4'-DDT  
 R.T.: 6.354 min  
 Delta R.T.: -0.002 min  
 Response: 2082990  
 Conc: 1.44 ng/ml m



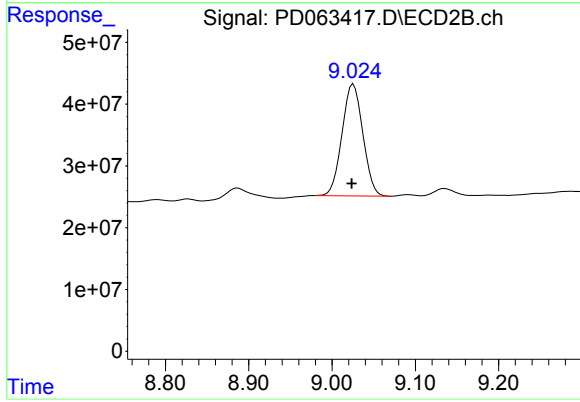
#17 4,4'-DDT  
 R.T.: 7.091 min  
 Delta R.T.: 0.000 min  
 Response: 18513705  
 Conc: 1.23 ng/ml m



#28 Decachlorobiphenyl  
R.T.: 8.196 min  
Delta R.T.: 0.002 min  
Response: 32088842  
Conc: 20.40 ng/ml

Instrument :  
ECD\_D  
ClientSampled :  
RO-1-VNJ-201

Manual Integrations  
APPROVED  
Ankita  
6/4/2021 11:25:51 AM



#28 Decachlorobiphenyl  
R.T.: 9.026 min  
Delta R.T.: 0.002 min  
Response: 314351829  
Conc: 22.75 ng/ml