

Data Path : Z:\pestpcbsrv\HPCHEM1\ECD_D\Data\PD060421\
 Data File : PD063419.D
 Signal(s) : Signal #1: ECD1A.ch Signal #2: ECD2B.ch
 Acq On : 03 Jun 2021 14:40
 Operator : AR\AJ
 Sample : M2582-01MSD
 Misc :
 ALS Vial : 17 Sample Multiplier: 1

Instrument :
 ECD_D
 ClientSampleId :
 RO-1-VNJ-201MSD

Integration File signal 1: autoint1.e
 Integration File signal 2: autoint2.e
 Quant Time: Jun 03 17:21:17 2021
 Quant Method : Z:\pestpcbsrv\HPCHEM1\ECD_D\Method\PD060221.M
 Quant Title : GC Extractables
 QLast Update : Thu Jun 03 01:33:41 2021
 Response via : Initial Calibration
 Integrator: ChemStation

Volume Inj. : 2 µl
 Signal #1 Phase : ZB-MR2 Signal #2 Phase: ZB-MR1
 Signal #1 Info : 30M x 0.32mm x0.2 Signal #2 Info : 30M x 0.32mm x 0.50µm

	Compound	RT#1	RT#2	Resp#1	Resp#2	ng/ml	ng/ml

System Monitoring Compounds							
1)	SA Tetrachlo...	3.440	3.971	31054906	310.8E6	22.443	23.196
28)	SA Decachlor...	8.195	9.025	34190290	337.4E6	21.740	24.415
Target Compounds							
2)	A alpha-BHC	3.875	4.358	118.0E6	1153.1E6	56.454	55.786
3)	MA gamma-BHC...	4.159	4.643	111.0E6	1062.9E6	56.532	56.043
4)	MA Heptachlor	4.460	5.150	111.4E6	1063.3E6	57.376	55.638
5)	MB Aldrin	4.708	5.454	104.0E6	1063.0E6	55.027	54.669
6)	B beta-BHC	4.410	4.814	50438780	427.4E6	57.978	54.281
7)	B delta-BHC	4.614	5.030	111.1E6	990.1E6	56.656	52.896
8)	Heptachlo...	5.151	5.840	96748575	932.1E6	55.211	50.986
9)	A Endosulfan I	5.490	6.197	85110046	925.7E6	51.637	54.329
10)	B gamma-Chl...	5.377	6.075	98450618	995.4E6	55.128	53.584
11)	B alpha-Chl...	5.436	6.147	95015198	983.0E6	53.733	55.294
12)	B 4,4'-DDE	5.599	6.303	95528112	887.2E6	54.941	48.822
13)	MA Dieldrin	5.733	6.453	98912966	973.7E6	56.315	53.790
14)	MA Endrin	5.990	6.671	88241557	821.2E6	55.482	53.425
15)	B Endosulfa...	6.271	6.892	177.0E6	1812.5E6	126.274	122.916
16)	A 4,4'-DDD	6.116	6.794	76709599	816.4E6	52.895	54.871
17)	MA 4,4'-DDT	6.357	7.092	82695036	831.5E6	57.240	55.239
18)	B Endrin al...	6.432	7.004	62953592	633.2E6	52.909	52.263
19)	B Endosulfa...	6.646	7.227	85322471	807.6E6	66.762	53.258
20)	A Methoxychlor	6.904	7.550	43436315	400.2E6	54.461	54.037
21)	B Endrin ke...	7.138	7.698	90735131	788.7E6	51.145	53.936
22)	Mirex	7.326	8.151	65489455	524.5E6	57.049	52.454

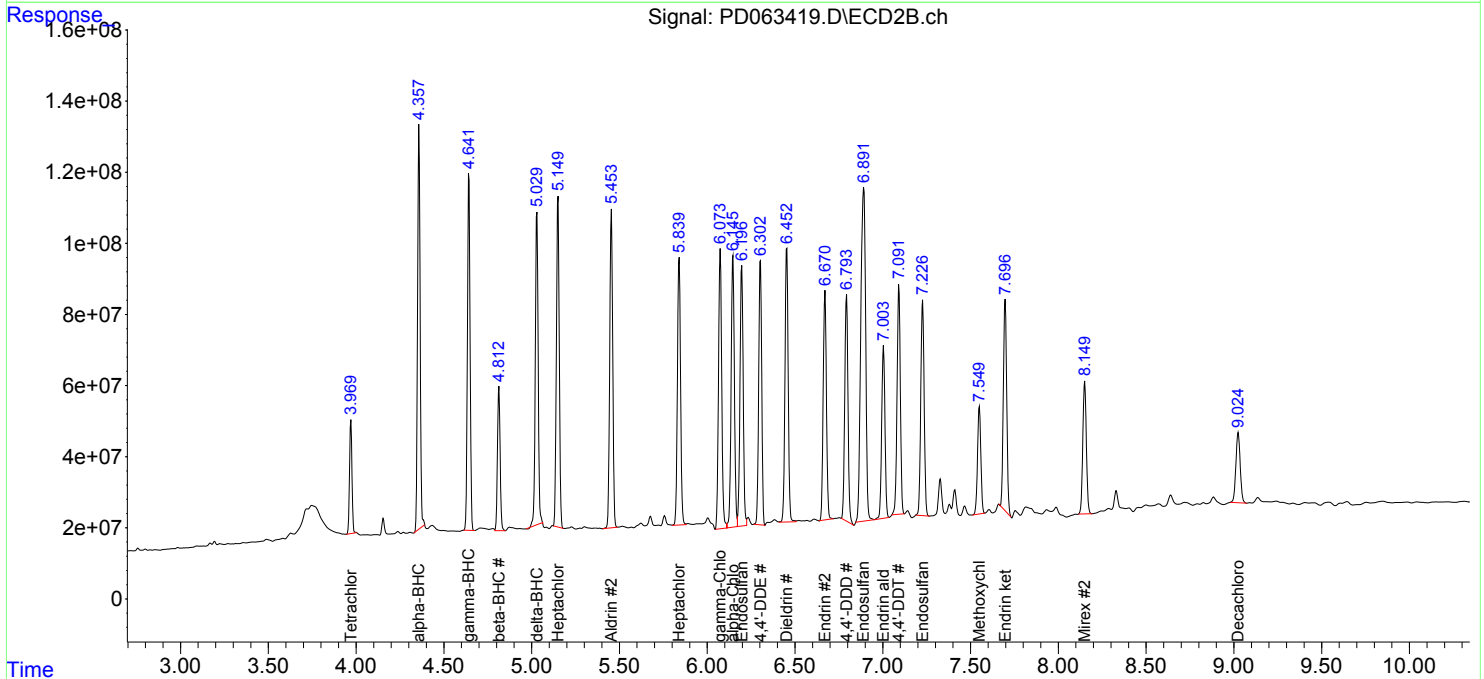
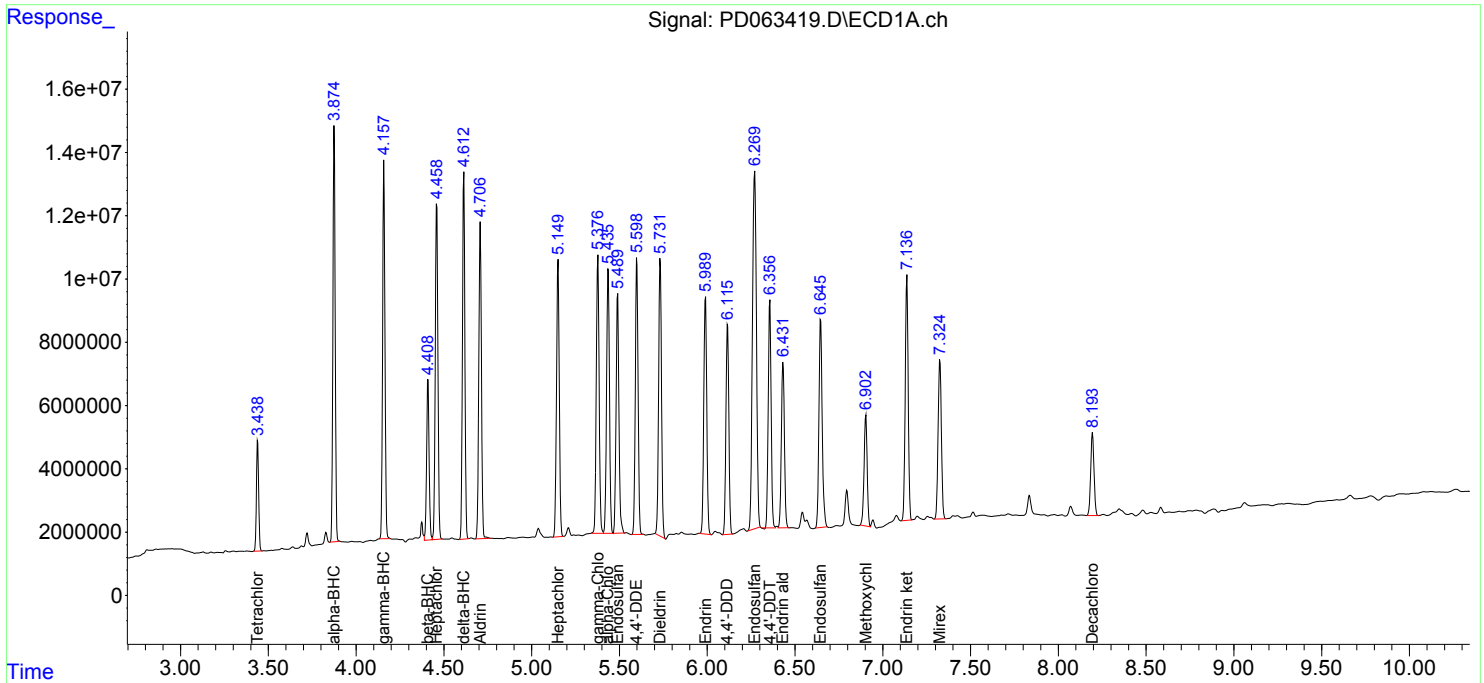
(f)=RT Delta > 1/2 Window (#)=Amounts differ by > 25% (m)=manual int.

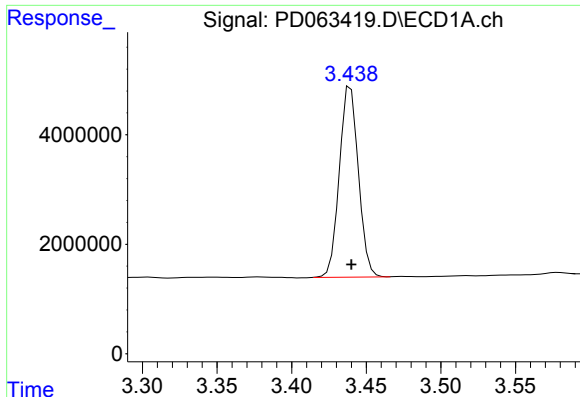
Data Path : Z:\pestpcbsrv\HPCHEM1\ECD_D\Data\PD060421\
 Data File : PD063419.D
 Signal(s) : Signal #1: ECD1A.ch Signal #2: ECD2B.ch
 Acq On : 03 Jun 2021 14:40
 Operator : AR\AJ
 Sample : M2582-01MSD
 Misc :
 ALS Vial : 17 Sample Multiplier: 1

Instrument :
 ECD_D
 ClientSampleId :
 RO-1-VNJ-201MSD

Integration File signal 1: autoint1.e
 Integration File signal 2: autoint2.e
 Quant Time: Jun 03 17:21:17 2021
 Quant Method : Z:\pestpcbsrv\HPCHEM1\ECD_D\Method\PD060221.M
 Quant Title : GC Extractables
 QLast Update : Thu Jun 03 01:33:41 2021
 Response via : Initial Calibration
 Integrator: ChemStation

Volume Inj. : 2 µl
 Signal #1 Phase : ZB-MR2 Signal #2 Phase: ZB-MR1
 Signal #1 Info : 30M x 0.32mm x0.2 Signal #2 Info : 30M x 0.32mm x 0.50µm

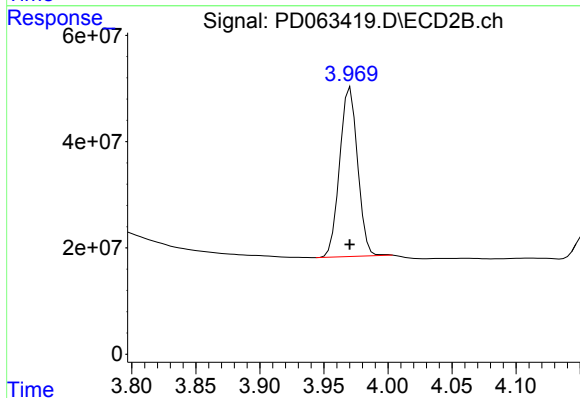




#1 Tetrachloro-m-xylene

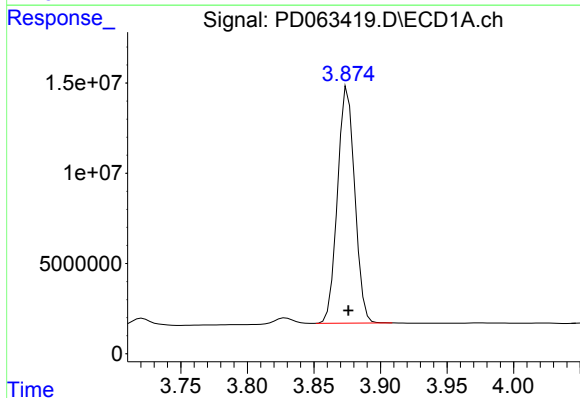
R.T.: 3.440 min
Delta R.T.: 0.000 min
Response: 31054906
Conc: 22.44 ng/ml

Instrument :
ECD_D
ClientSampleId :
RO-1-VNJ-201MSD



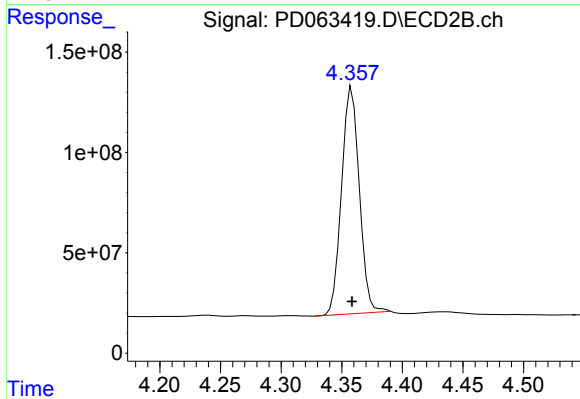
#1 Tetrachloro-m-xylene

R.T.: 3.971 min
Delta R.T.: 0.000 min
Response: 310798906
Conc: 23.20 ng/ml



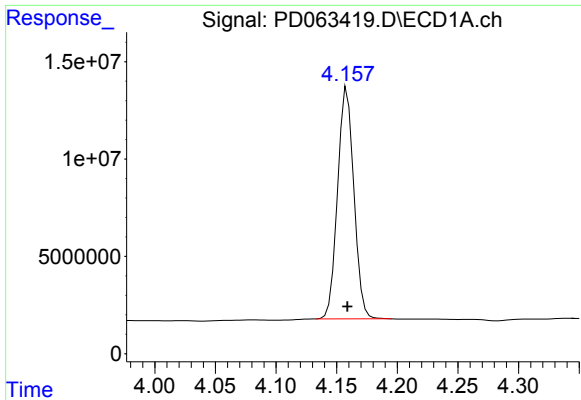
#2 alpha-BHC

R.T.: 3.875 min
Delta R.T.: 0.000 min
Response: 118038624
Conc: 56.45 ng/ml



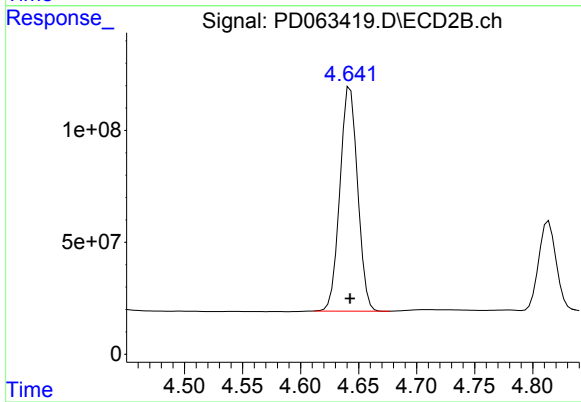
#2 alpha-BHC

R.T.: 4.358 min
Delta R.T.: 0.000 min
Response: 1153144906
Conc: 55.79 ng/ml

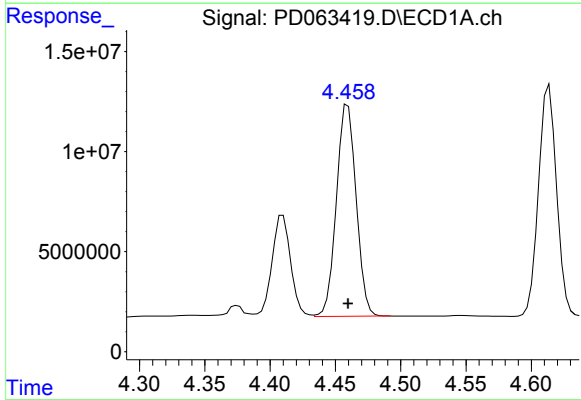


#3 gamma-BHC (Lindane)
R.T.: 4.159 min
Delta R.T.: 0.000 min
Response: 111025372
Conc: 56.53 ng/ml

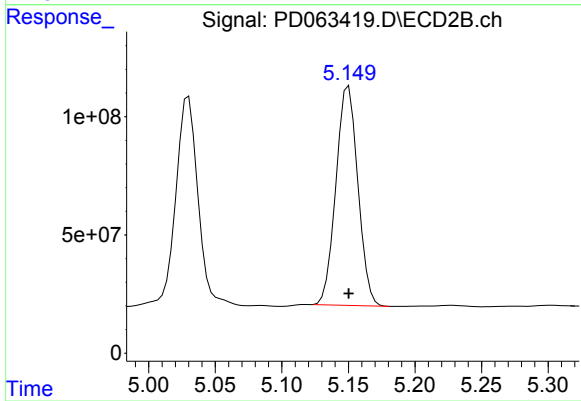
Instrument :
ECD_D
ClientSampleId :
RO-1-VNJ-201MSD



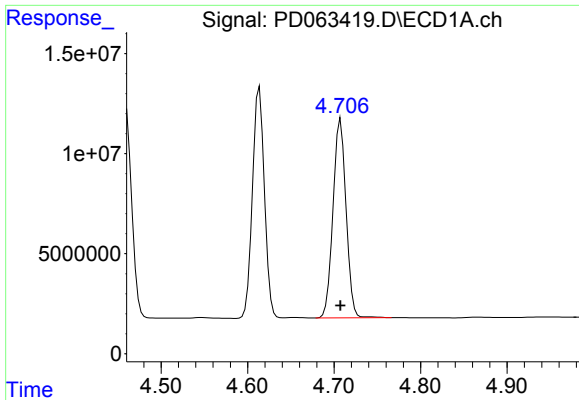
#3 gamma-BHC (Lindane)
R.T.: 4.643 min
Delta R.T.: 0.000 min
Response: 1062929932
Conc: 56.04 ng/ml



#4 Heptachlor
R.T.: 4.460 min
Delta R.T.: 0.000 min
Response: 111400000
Conc: 57.38 ng/ml

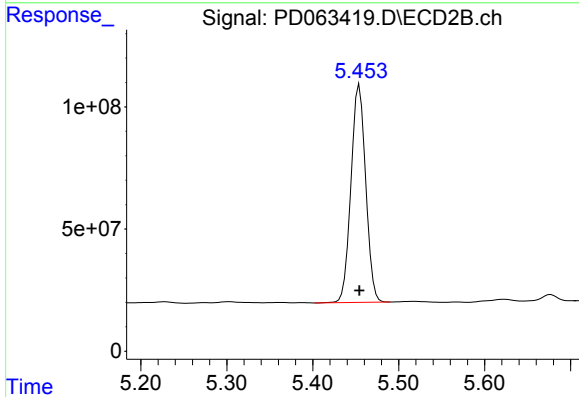


#4 Heptachlor
R.T.: 5.150 min
Delta R.T.: 0.000 min
Response: 1063280470
Conc: 55.64 ng/ml

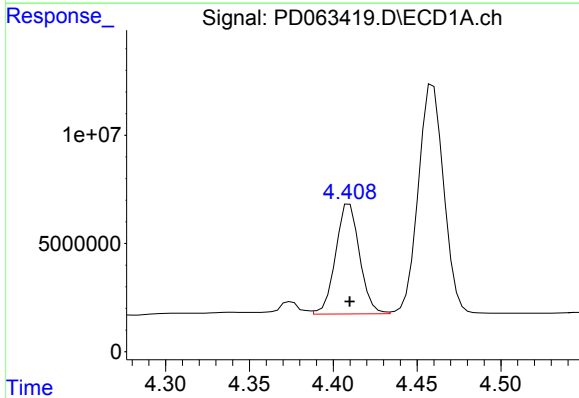


#5 Aldrin
 R.T.: 4.708 min
 Delta R.T.: 0.000 min
 Response: 103994872
 Conc: 55.03 ng/ml

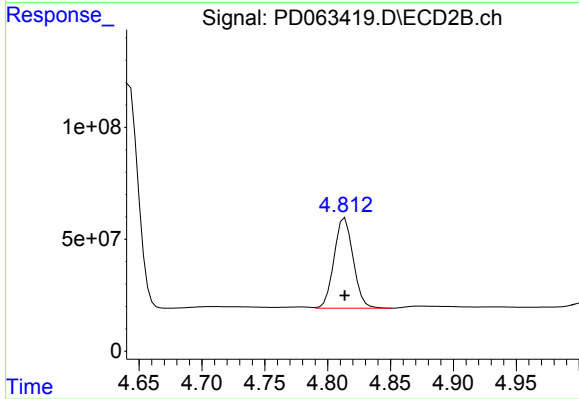
Instrument :
 ECD_D
ClientSampleId :
 RO-1-VNJ-201MSD



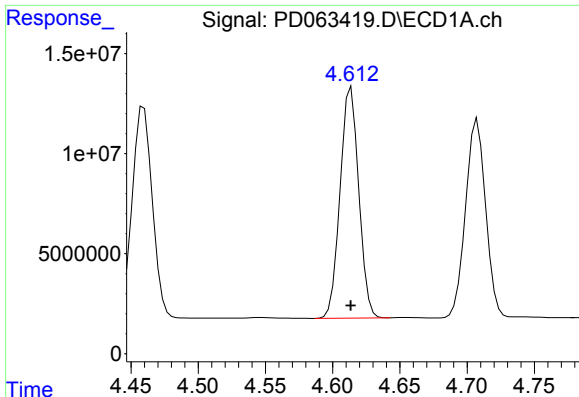
#5 Aldrin
 R.T.: 5.454 min
 Delta R.T.: 0.000 min
 Response: 1062964251
 Conc: 54.67 ng/ml



#6 beta-BHC
 R.T.: 4.410 min
 Delta R.T.: 0.000 min
 Response: 50438780
 Conc: 57.98 ng/ml



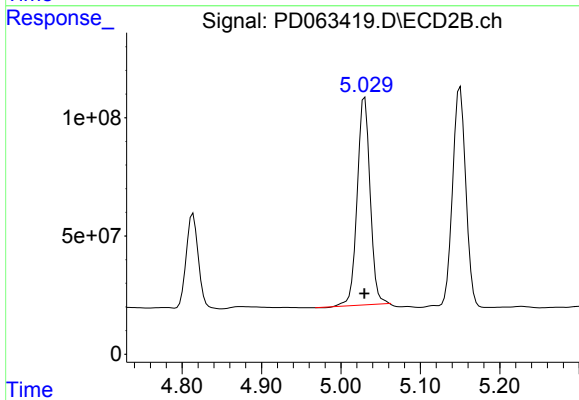
#6 beta-BHC
 R.T.: 4.814 min
 Delta R.T.: 0.000 min
 Response: 427371005
 Conc: 54.28 ng/ml



#7 delta-BHC

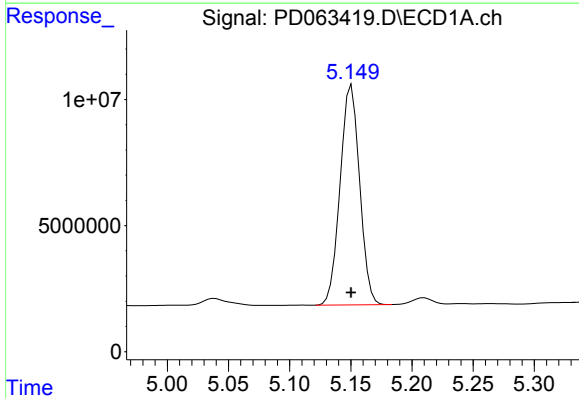
R.T.: 4.614 min
Delta R.T.: 0.000 min
Response: 111116188
Conc: 56.66 ng/ml

Instrument :
ECD_D
ClientSampleId :
RO-1-VNJ-201MSD



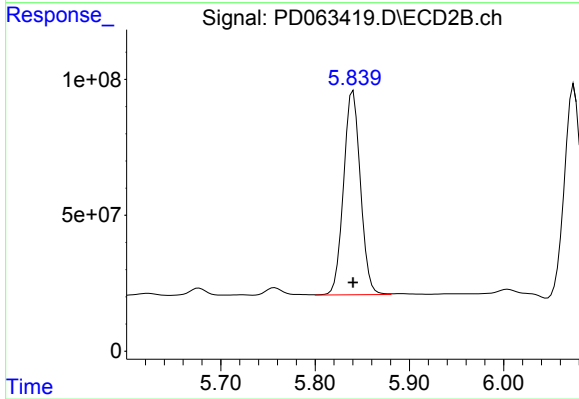
#7 delta-BHC

R.T.: 5.030 min
Delta R.T.: 0.000 min
Response: 990058459
Conc: 52.90 ng/ml



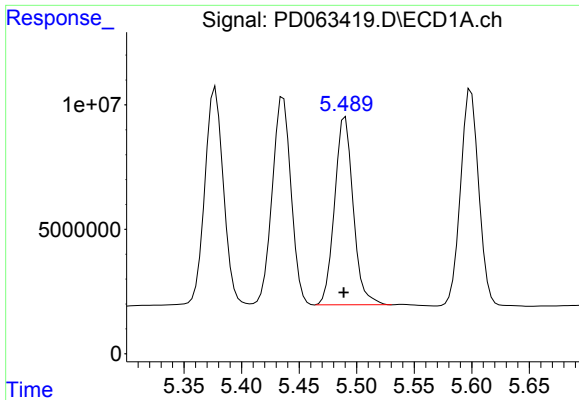
#8 Heptachlor epoxide

R.T.: 5.151 min
Delta R.T.: 0.000 min
Response: 96748575
Conc: 55.21 ng/ml



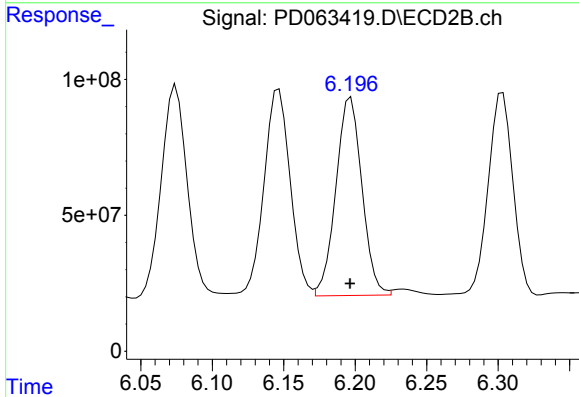
#8 Heptachlor epoxide

R.T.: 5.840 min
Delta R.T.: 0.000 min
Response: 932051268
Conc: 50.99 ng/ml

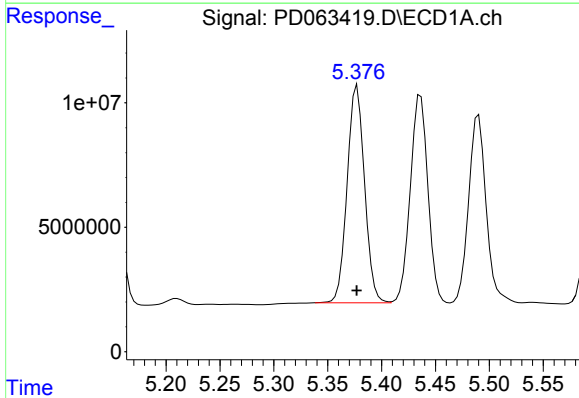


#9 Endosulfan I
 R.T.: 5.490 min
 Delta R.T.: 0.001 min
 Response: 85110046
 Conc: 51.64 ng/ml

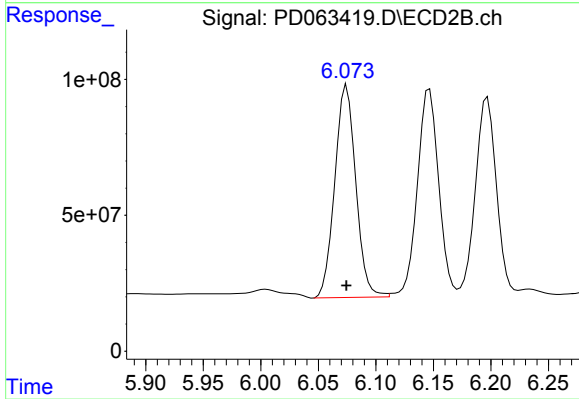
Instrument :
 ECD_D
ClientSampleId :
 RO-1-VNJ-201MSD



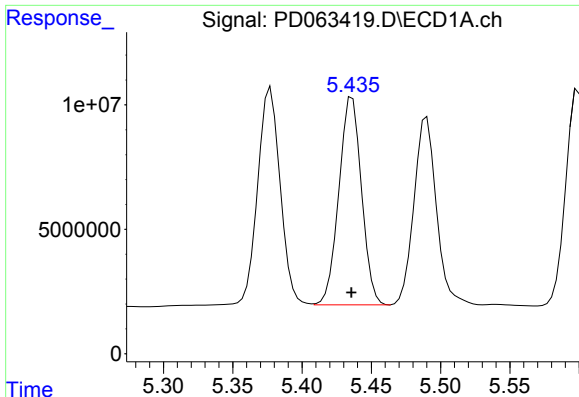
#9 Endosulfan I
 R.T.: 6.197 min
 Delta R.T.: 0.000 min
 Response: 925677248
 Conc: 54.33 ng/ml



#10 gamma-Chlordane
 R.T.: 5.377 min
 Delta R.T.: 0.000 min
 Response: 98450618
 Conc: 55.13 ng/ml



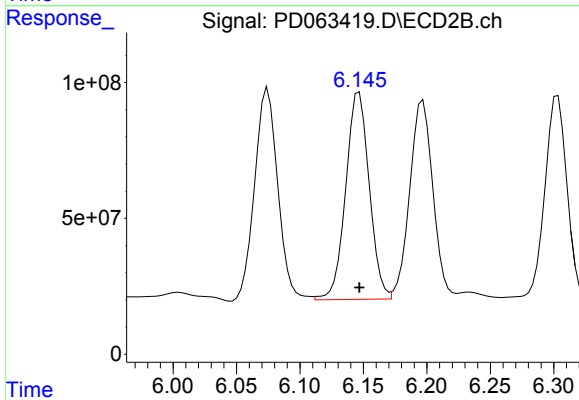
#10 gamma-Chlordane
 R.T.: 6.075 min
 Delta R.T.: 0.000 min
 Response: 995416392
 Conc: 53.58 ng/ml



#11 alpha-Chlordane

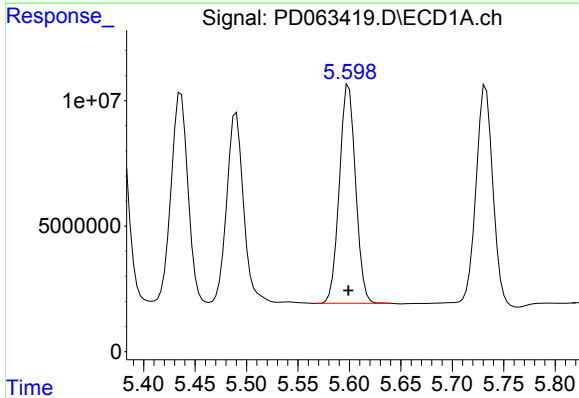
R.T.: 5.436 min
 Delta R.T.: 0.000 min
 Response: 95015198
 Conc: 53.73 ng/ml

Instrument :
 ECD_D
 ClientSampleId :
 RO-1-VNJ-201MSD



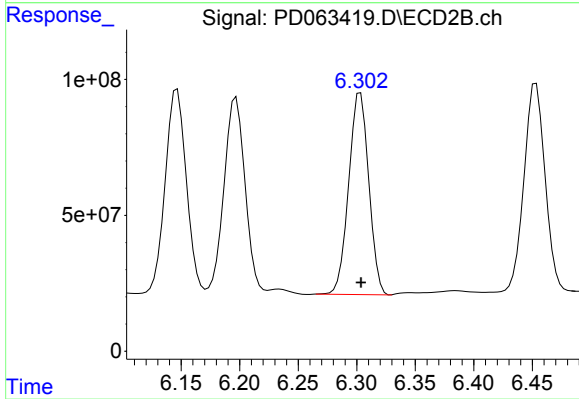
#11 alpha-Chlordane

R.T.: 6.147 min
 Delta R.T.: 0.000 min
 Response: 983038179
 Conc: 55.29 ng/ml



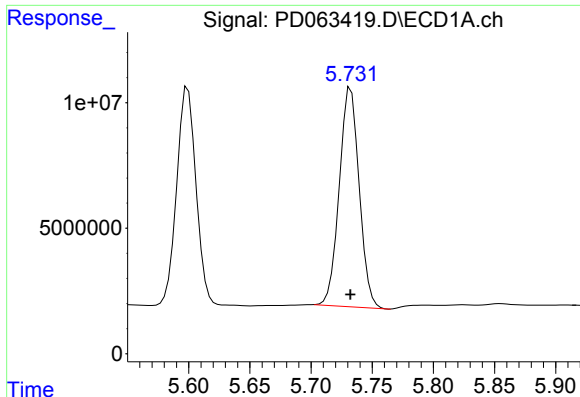
#12 4,4'-DDE

R.T.: 5.599 min
 Delta R.T.: 0.000 min
 Response: 95528112
 Conc: 54.94 ng/ml



#12 4,4'-DDE

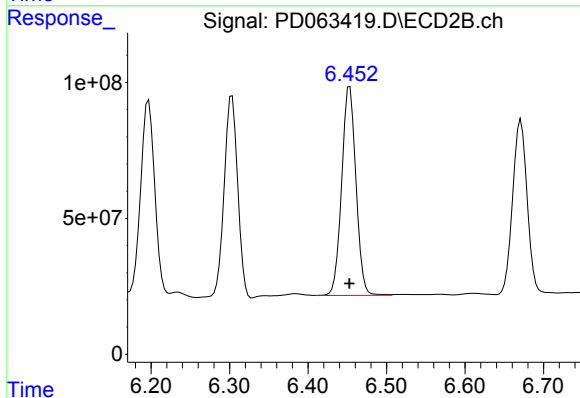
R.T.: 6.303 min
 Delta R.T.: 0.000 min
 Response: 887233110
 Conc: 48.82 ng/ml



#13 Dieldrin

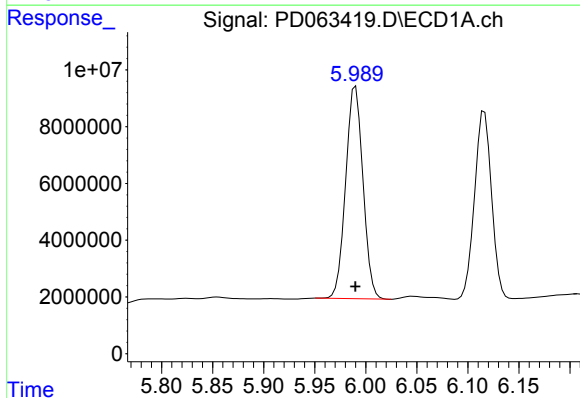
R.T.: 5.733 min
Delta R.T.: 0.000 min
Response: 98912966
Conc: 56.32 ng/ml

Instrument :
ECD_D
ClientSampleId :
RO-1-VNJ-201MSD



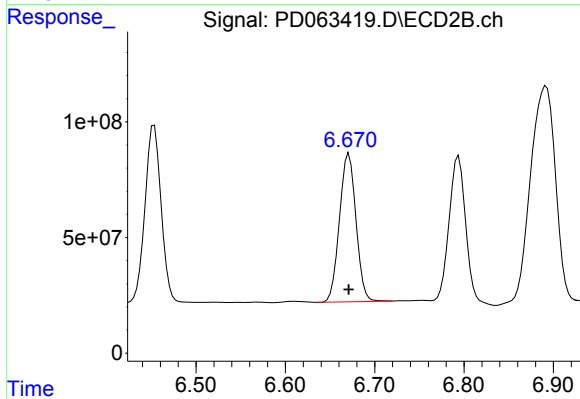
#13 Dieldrin

R.T.: 6.453 min
Delta R.T.: 0.000 min
Response: 973719066
Conc: 53.79 ng/ml



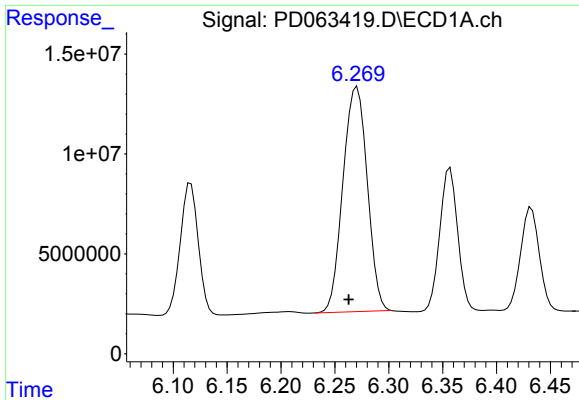
#14 Endrin

R.T.: 5.990 min
Delta R.T.: 0.000 min
Response: 88241557
Conc: 55.48 ng/ml



#14 Endrin

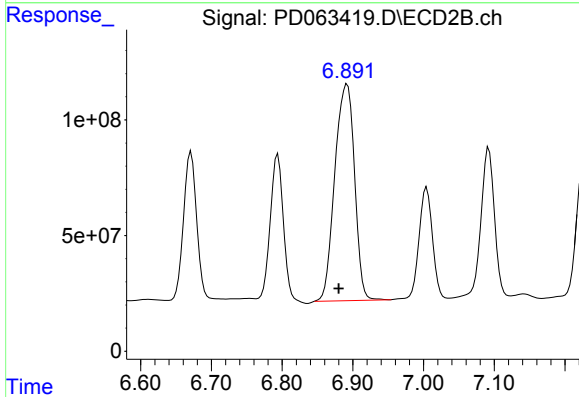
R.T.: 6.671 min
Delta R.T.: 0.000 min
Response: 821164929
Conc: 53.43 ng/ml



#15 Endosulfan II

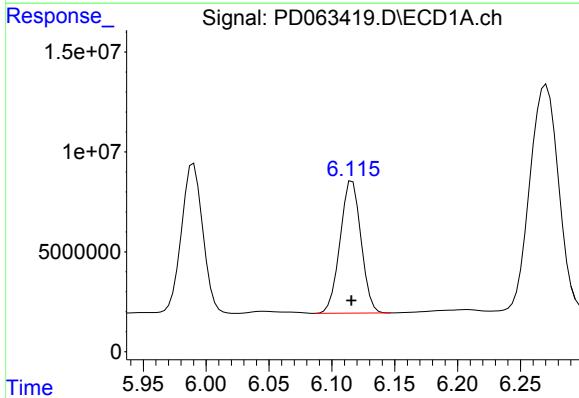
R.T.: 6.271 min
 Delta R.T.: 0.008 min
 Response: 177044980
 Conc: 126.27 ng/ml

Instrument :
 ECD_D
 ClientSampleId :
 RO-1-VNJ-201MSD



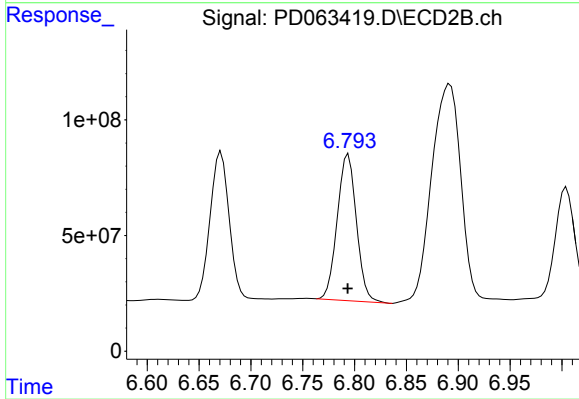
#15 Endosulfan II

R.T.: 6.892 min
 Delta R.T.: 0.012 min
 Response: 1812534525
 Conc: 122.92 ng/ml



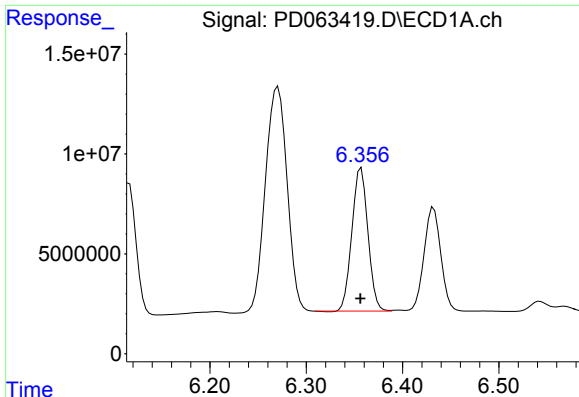
#16 4,4'-DDD

R.T.: 6.116 min
 Delta R.T.: 0.000 min
 Response: 76709599
 Conc: 52.89 ng/ml



#16 4,4'-DDD

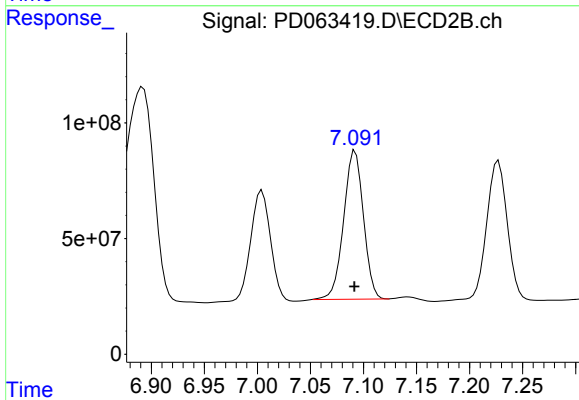
R.T.: 6.794 min
 Delta R.T.: 0.000 min
 Response: 816416000
 Conc: 54.87 ng/ml



#17 4,4'-DDT

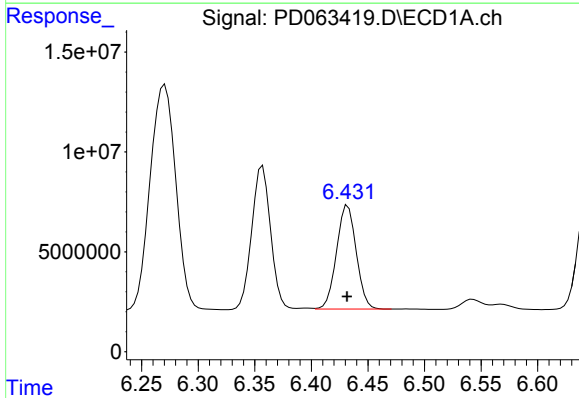
R.T.: 6.357 min
 Delta R.T.: 0.000 min
 Response: 82695036
 Conc: 57.24 ng/ml

Instrument :
 ECD_D
 ClientSampleId :
 RO-1-VNJ-201MSD



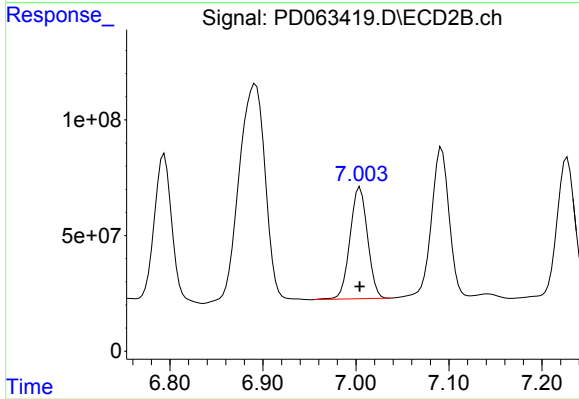
#17 4,4'-DDT

R.T.: 7.092 min
 Delta R.T.: 0.000 min
 Response: 831459510
 Conc: 55.24 ng/ml



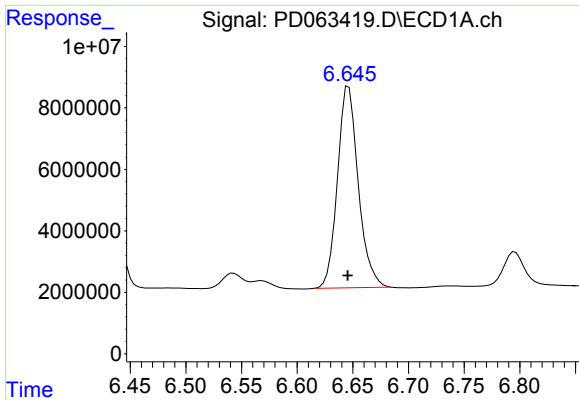
#18 Endrin aldehyde

R.T.: 6.432 min
 Delta R.T.: 0.000 min
 Response: 62953592
 Conc: 52.91 ng/ml



#18 Endrin aldehyde

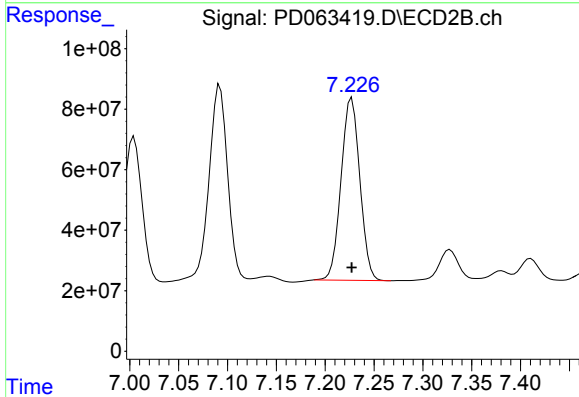
R.T.: 7.004 min
 Delta R.T.: 0.000 min
 Response: 633221530
 Conc: 52.26 ng/ml



#19 Endosulfan Sulfate

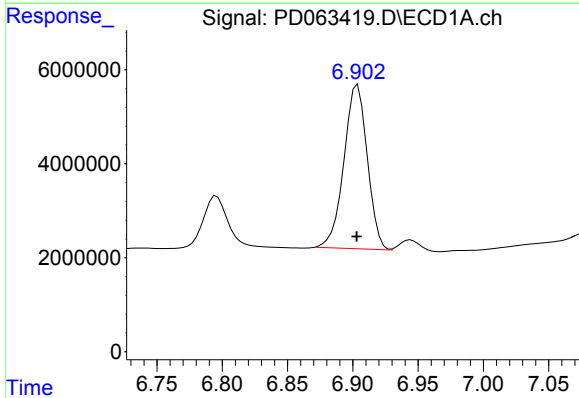
R.T.: 6.646 min
 Delta R.T.: 0.000 min
 Response: 85322471
 Conc: 66.76 ng/ml

Instrument :
 ECD_D
 ClientSampleId :
 RO-1-VNJ-201MSD



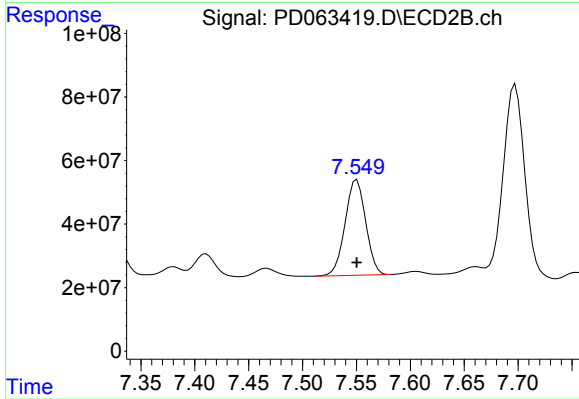
#19 Endosulfan Sulfate

R.T.: 7.227 min
 Delta R.T.: 0.000 min
 Response: 807629928
 Conc: 53.26 ng/ml



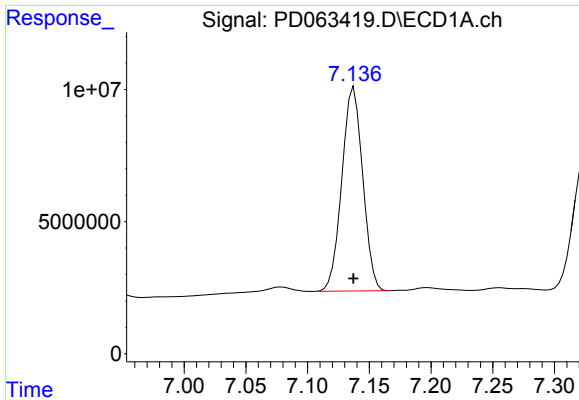
#20 Methoxychlor

R.T.: 6.904 min
 Delta R.T.: 0.000 min
 Response: 43436315
 Conc: 54.46 ng/ml



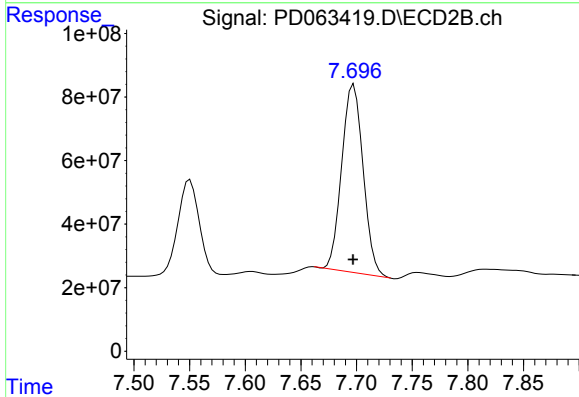
#20 Methoxychlor

R.T.: 7.550 min
 Delta R.T.: 0.000 min
 Response: 400232040
 Conc: 54.04 ng/ml

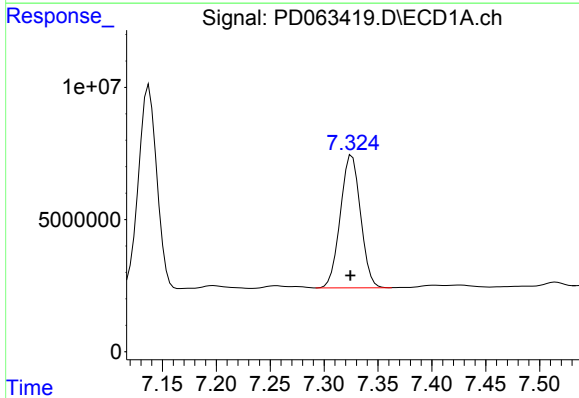


#21 Endrin ketone
 R.T.: 7.138 min
 Delta R.T.: 0.000 min
 Response: 90735131
 Conc: 51.14 ng/ml

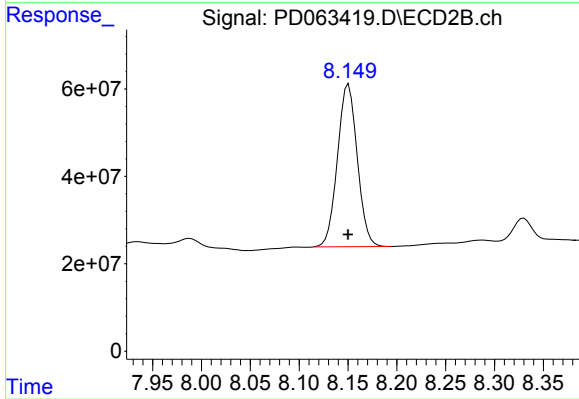
Instrument :
 ECD_D
 ClientSampleId :
 RO-1-VNJ-201MSD



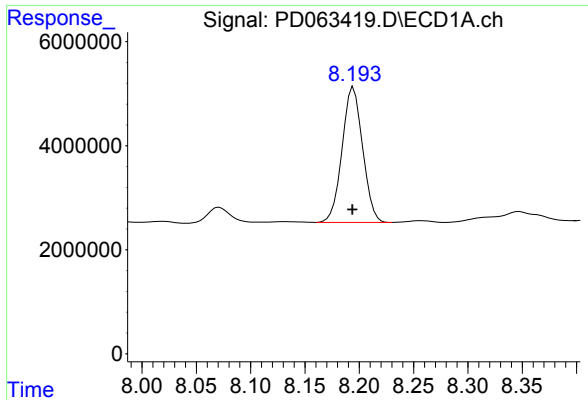
#21 Endrin ketone
 R.T.: 7.698 min
 Delta R.T.: 0.000 min
 Response: 788667735
 Conc: 53.94 ng/ml



#22 Mirex
 R.T.: 7.326 min
 Delta R.T.: 0.001 min
 Response: 65489455
 Conc: 57.05 ng/ml

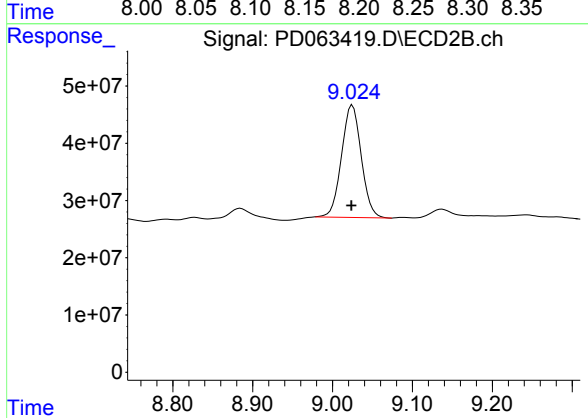


#22 Mirex
 R.T.: 8.151 min
 Delta R.T.: 0.000 min
 Response: 524489119
 Conc: 52.45 ng/ml



#28 Decachlorobiphenyl
R.T.: 8.195 min
Delta R.T.: 0.000 min
Response: 34190290
Conc: 21.74 ng/ml

Instrument :
ECD_D
ClientSampleId :
RO-1-VNJ-201MSD



#28 Decachlorobiphenyl
R.T.: 9.025 min
Delta R.T.: 0.001 min
Response: 337376009
Conc: 24.41 ng/ml