

Data Path : Z:\pestpcbsrv\HPCHEM1\ECD\_D\Data\PD060421\  
 Data File : PD063422.D  
 Signal(s) : Signal #1: ECD1A.ch Signal #2: ECD2B.ch  
 Acq On : 03 Jun 2021 15:22  
 Operator : AR\AJ  
 Sample : M2585-02  
 Misc :  
 ALS Vial : 20 Sample Multiplier: 1

**Instrument :**  
 ECD\_D  
**ClientSampleID :**  
 ETGI-363

**Manual Integrations**  
**APPROVED**  
 Ankita  
 6/7/2021 8:44:24 AM

Integration File signal 1: autoint1.e  
 Integration File signal 2: autoint2.e  
 Quant Time: Jun 03 18:02:05 2021  
 Quant Method : Z:\pestpcbsrv\HPCHEM1\ECD\_D\Method\PD060221.M  
 Quant Title : GC Extractables  
 QLast Update : Thu Jun 03 01:33:41 2021  
 Response via : Initial Calibration  
 Integrator: ChemStation

Volume Inj. : 2 µl  
 Signal #1 Phase : ZB-MR2 Signal #2 Phase: ZB-MR1  
 Signal #1 Info : 30M x 0.32mm x0.2 Signal #2 Info : 30M x 0.32mm x 0.50µm

Compound	RT#1	RT#2	Resp#1	Resp#2	ng/ml	ng/ml
-----						
System Monitoring Compounds						
1) SA Tetrachlo...	3.439	3.971	17521777	175.9E6	12.663	13.127
28) SA Decachlor...	8.195	9.025	19910757	166.7E6	12.660	12.060
Target Compounds						
4) MA Heptachlor	4.458	5.148	8846388	71633303	4.556m	3.748m
10) B gamma-Chl...	5.377	6.075	380.4E6	6385.9E6	213.020m	343.757 #
11) B alpha-Chl...	5.436	6.149	844.7E6	13053.1E6	477.716	734.209 #
12) B 4,4'-DDE	5.601	6.300	14256143	264.5E6	8.199m	14.555m#
14) MA Endrin	5.988	6.664	16136122	102.8E6	10.146m	6.691m#
-----						

(f)=RT Delta > 1/2 Window (#)=Amounts differ by > 25% (m)=manual int.

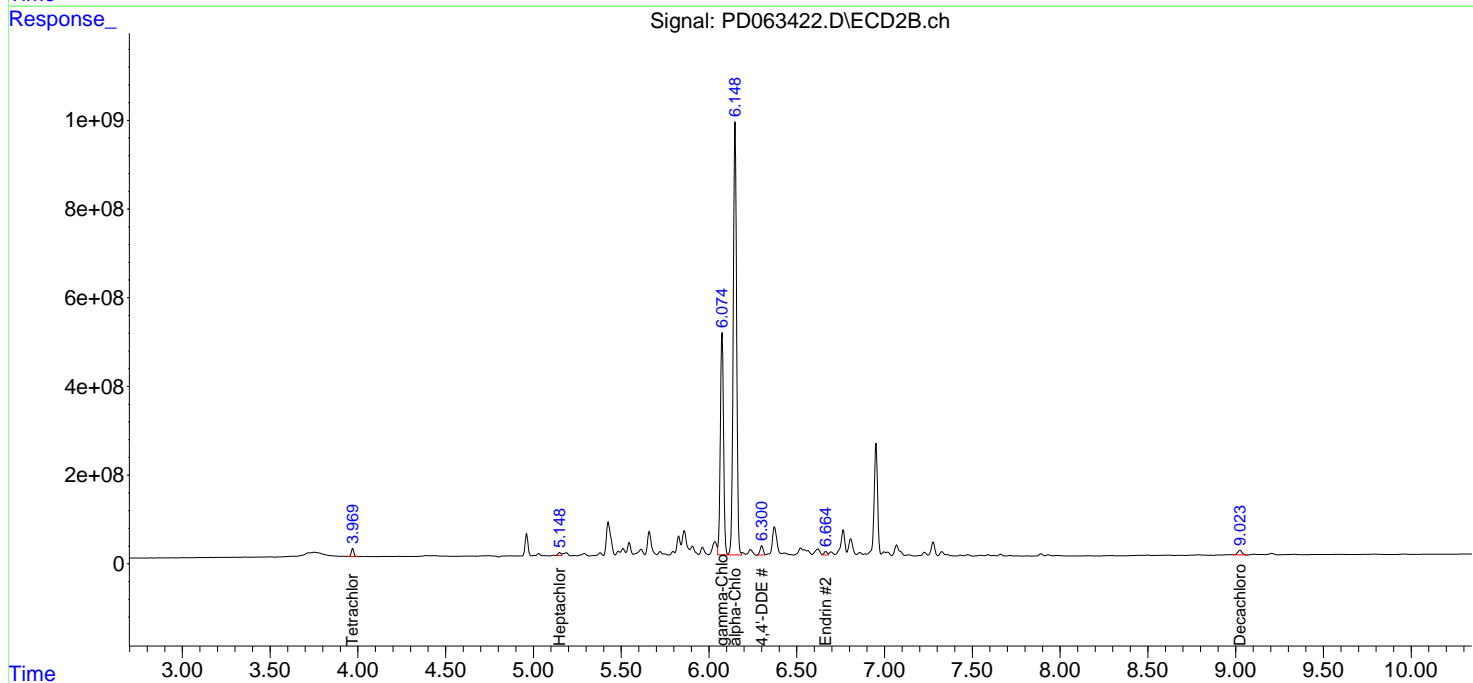
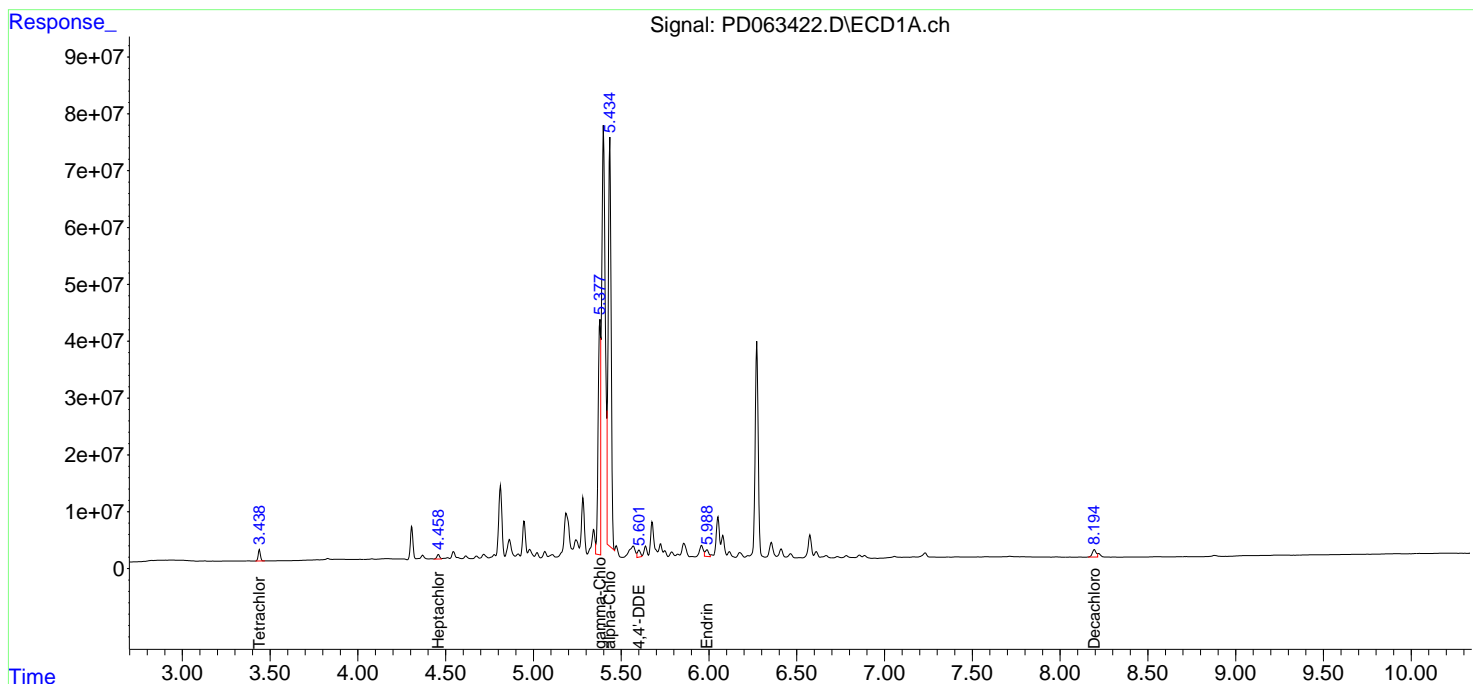
Data Path : Z:\pestpcbsrv\HPCHEM1\ECD\_D\Data\PD060421\  
 Data File : PD063422.D  
 Signal(s) : Signal #1: ECD1A.ch Signal #2: ECD2B.ch  
 Acq On : 03 Jun 2021 15:22  
 Operator : AR\AJ  
 Sample : M2585-02  
 Misc :  
 ALS Vial : 20 Sample Multiplier: 1

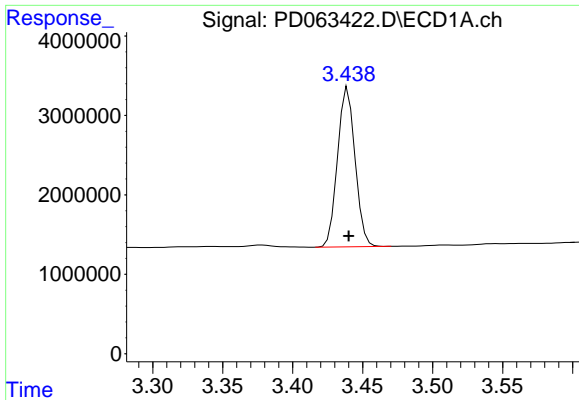
**Instrument :**  
 ECD\_D  
**Client Sampled :**  
 ETGI-363

**Manual Integrations**  
**APPROVED**  
 Ankita  
 6/7/2021 8:44:24 AM

Integration File signal 1: autoint1.e  
 Integration File signal 2: autoint2.e  
 Quant Time: Jun 03 18:02:05 2021  
 Quant Method : Z:\pestpcbsrv\HPCHEM1\ECD\_D\Method\PD060221.M  
 Quant Title : GC Extractables  
 QLast Update : Thu Jun 03 01:33:41 2021  
 Response via : Initial Calibration  
 Integrator: ChemStation

Volume Inj. : 2 µl  
 Signal #1 Phase : ZB-MR2 Signal #2 Phase: ZB-MR1  
 Signal #1 Info : 30M x 0.32mm x0.2 Signal #2 Info : 30M x 0.32mm x 0.50µm

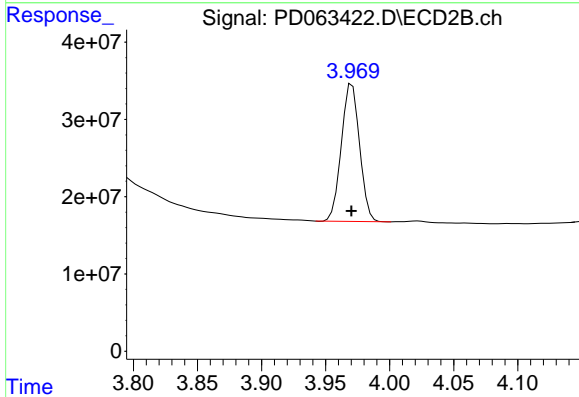




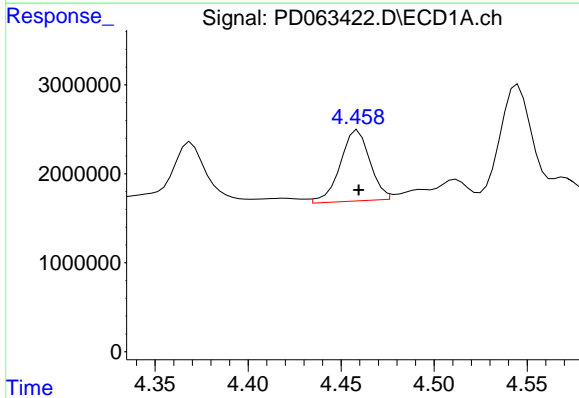
#1 Tetrachloro-m-xylene  
 R.T.: 3.439 min  
 Delta R.T.: 0.000 min  
 Response: 17521777  
 Conc: 12.66 ng/ml

**Instrument :**  
 ECD\_D  
**ClientSampled :**  
 ETGI-363

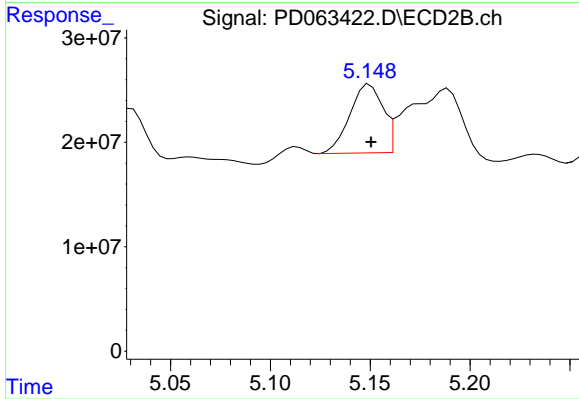
**Manual Integrations**  
**APPROVED**  
 Ankita  
 6/7/2021 8:44:24 AM



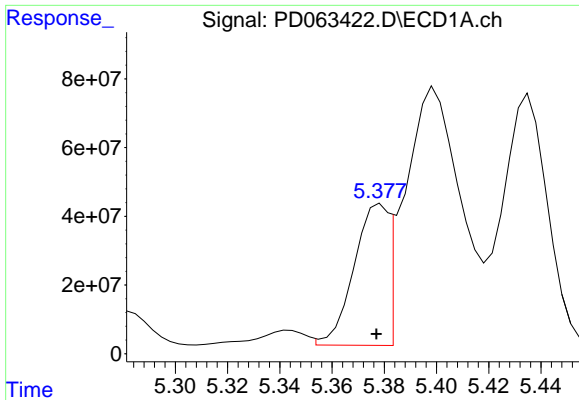
#1 Tetrachloro-m-xylene  
 R.T.: 3.971 min  
 Delta R.T.: 0.000 min  
 Response: 175881895  
 Conc: 13.13 ng/ml



#4 Heptachlor  
 R.T.: 4.458 min  
 Delta R.T.: -0.002 min  
 Response: 8846388  
 Conc: 4.56 ng/ml m



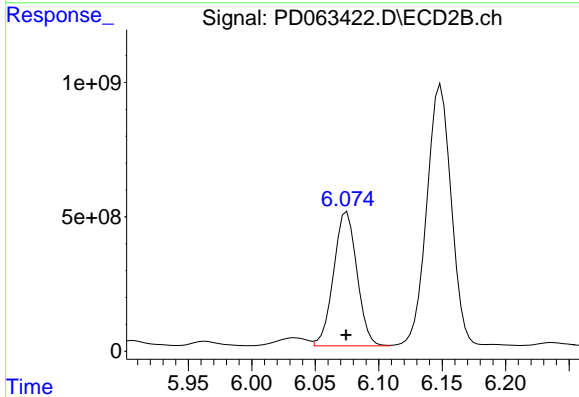
#4 Heptachlor  
 R.T.: 5.148 min  
 Delta R.T.: -0.002 min  
 Response: 71633303  
 Conc: 3.75 ng/ml m



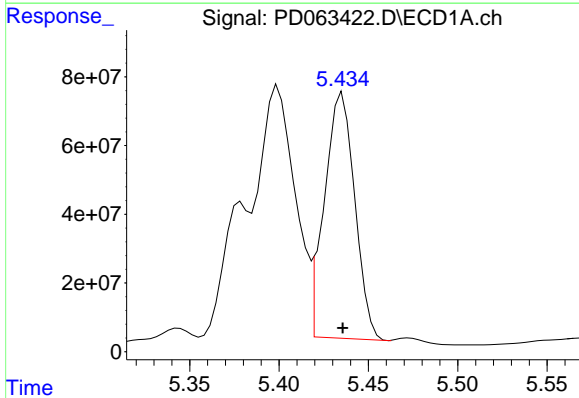
#10 gamma-Chlordane  
 R.T.: 5.377 min  
 Delta R.T.: 0.000 min  
 Response: 380421696  
 Conc: 213.02 ng/ml m

Instrument :  
 ECD\_D  
 ClientSampled :  
 ETGI-363

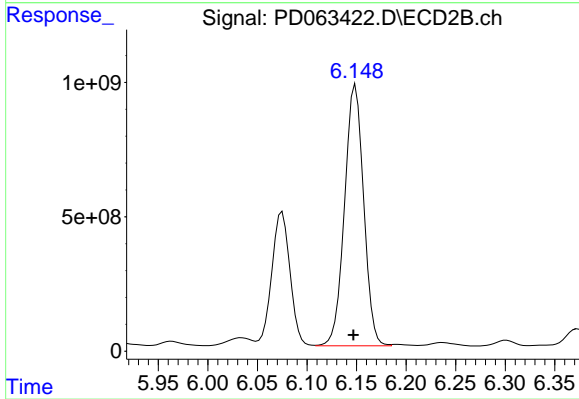
Manual Integrations  
 APPROVED  
 Ankita  
 6/7/2021 8:44:24 AM



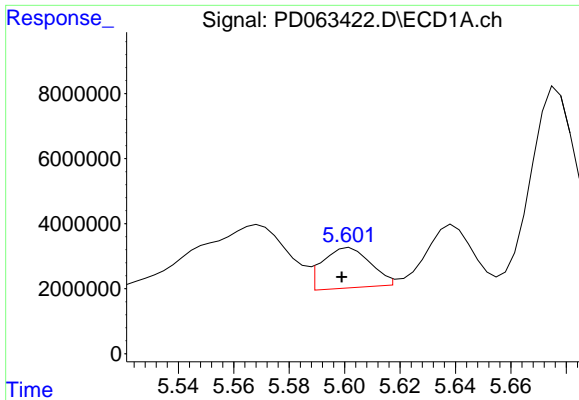
#10 gamma-Chlordane  
 R.T.: 6.075 min  
 Delta R.T.: 0.000 min  
 Response: 6385861132  
 Conc: 343.76 ng/ml



#11 alpha-Chlordane  
 R.T.: 5.436 min  
 Delta R.T.: 0.000 min  
 Response: 844735292  
 Conc: 477.72 ng/ml



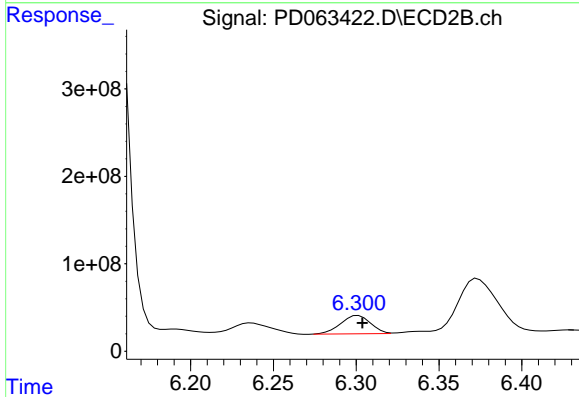
#11 alpha-Chlordane  
 R.T.: 6.149 min  
 Delta R.T.: 0.002 min  
 Response: 13053052193  
 Conc: 734.21 ng/ml



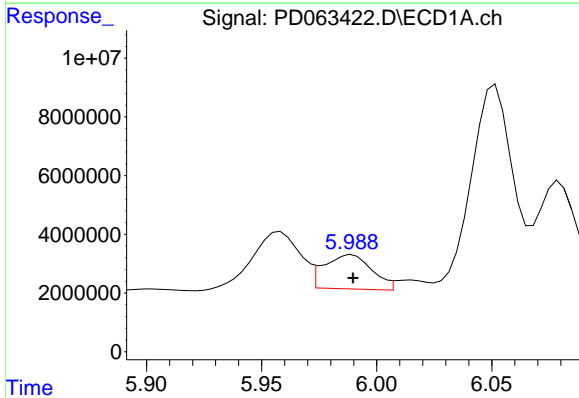
#12 4,4'-DDE  
 R.T.: 5.601 min  
 Delta R.T.: 0.002 min  
 Response: 14256143  
 Conc: 8.20 ng/ml m

**Instrument :**  
 ECD\_D  
**ClientSampled :**  
 ETGI-363

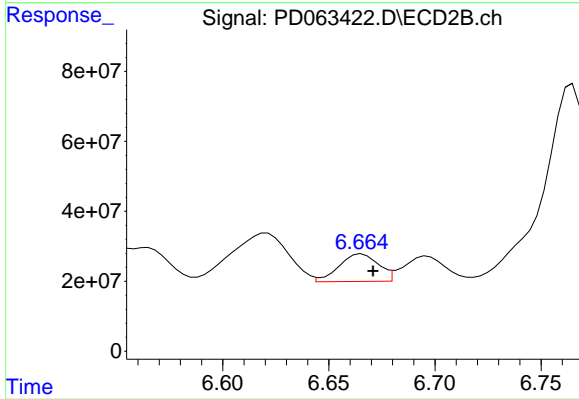
**Manual Integrations**  
**APPROVED**  
 Ankita  
 6/7/2021 8:44:24 AM



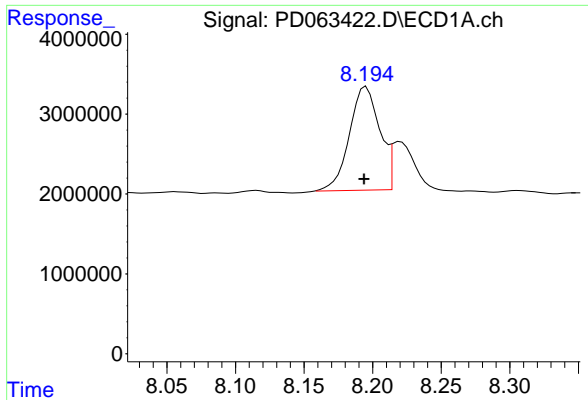
#12 4,4'-DDE  
 R.T.: 6.300 min  
 Delta R.T.: -0.004 min  
 Response: 264501362  
 Conc: 14.55 ng/ml m



#14 Endrin  
 R.T.: 5.988 min  
 Delta R.T.: -0.002 min  
 Response: 16136122  
 Conc: 10.15 ng/ml m



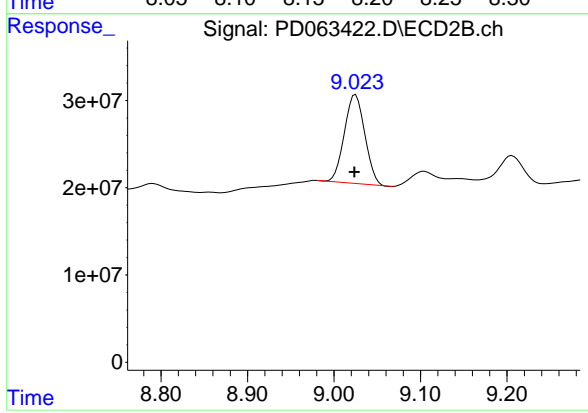
#14 Endrin  
 R.T.: 6.664 min  
 Delta R.T.: -0.007 min  
 Response: 102836139  
 Conc: 6.69 ng/ml m



#28 Decachlorobiphenyl  
R.T.: 8.195 min  
Delta R.T.: 0.002 min  
Response: 19910757  
Conc: 12.66 ng/ml

Instrument :  
ECD\_D  
ClientSampleId :  
ETGI-363

Manual Integrations  
APPROVED  
Ankita  
6/7/2021 8:44:24 AM



#28 Decachlorobiphenyl  
R.T.: 9.025 min  
Delta R.T.: 0.001 min  
Response: 166650564  
Conc: 12.06 ng/ml