

Data Path : Z:\pestpcbsrv\HPCHEM1\ECD\_D\Data\PD060421\  
 Data File : PD063428.D  
 Signal(s) : Signal #1: ECD1A.ch Signal #2: ECD2B.ch  
 Acq On : 03 Jun 2021 16:46  
 Operator : AR\AJ  
 Sample : I.BLK  
 Misc :  
 ALS Vial : 2 Sample Multiplier: 1

Instrument :  
 ECD\_D  
 ClientSampleId :  
 I.BLK

Integration File signal 1: autoint1.e  
 Integration File signal 2: autoint2.e  
 Quant Time: Jun 03 17:22:45 2021  
 Quant Method : Z:\pestpcbsrv\HPCHEM1\ECD\_D\Method\PD060221.M  
 Quant Title : GC Extractables  
 QLast Update : Thu Jun 03 01:33:41 2021  
 Response via : Initial Calibration  
 Integrator: ChemStation

Volume Inj. : 2 µl  
 Signal #1 Phase : ZB-MR2 Signal #2 Phase: ZB-MR1  
 Signal #1 Info : 30M x 0.32mm x0.2 Signal #2 Info : 30M x 0.32mm x 0.50µm

Compound	RT#1	RT#2	Resp#1	Resp#2	ng/ml	ng/ml
-----						
System Monitoring Compounds						
1) SA Tetrachlo...	3.439	3.971	26675786	270.4E6	19.278	20.181
2) SA Decachlor...	8.195	9.025	25760984	235.5E6	16.380	17.045

Target Compounds

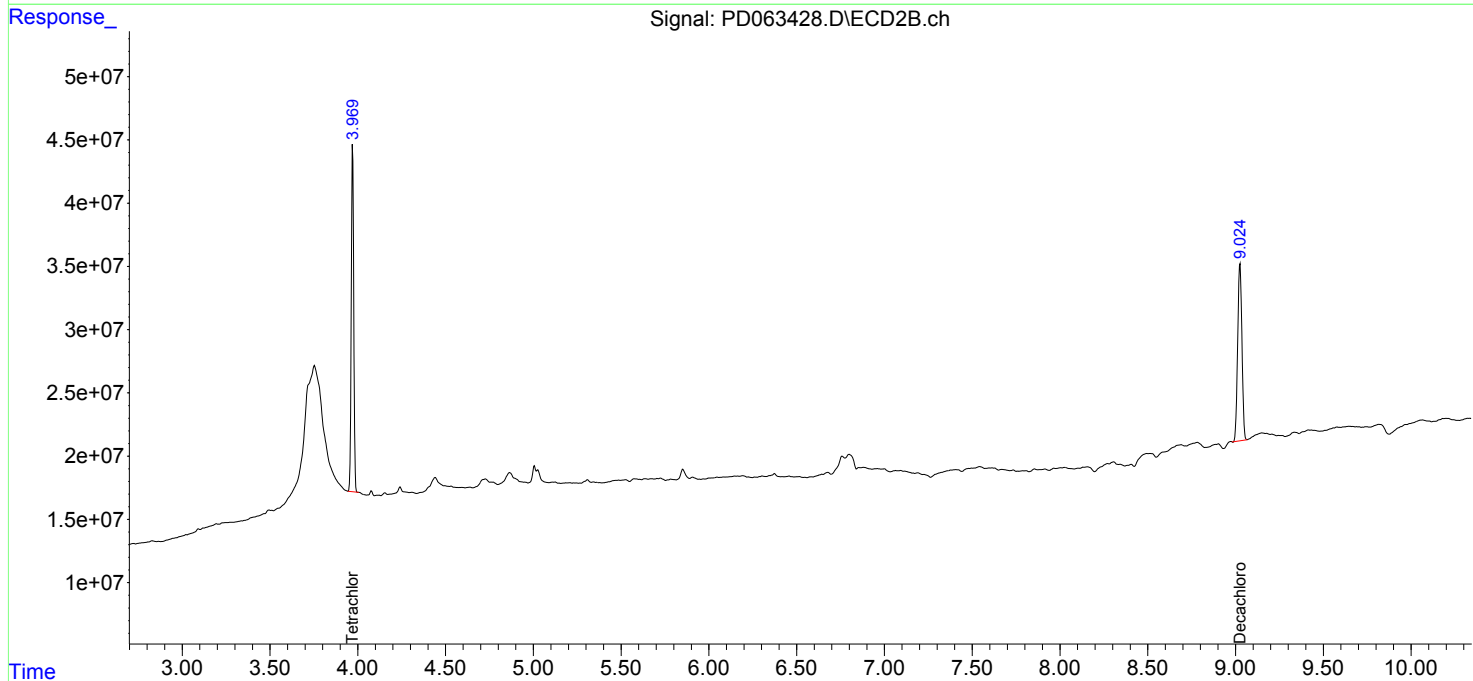
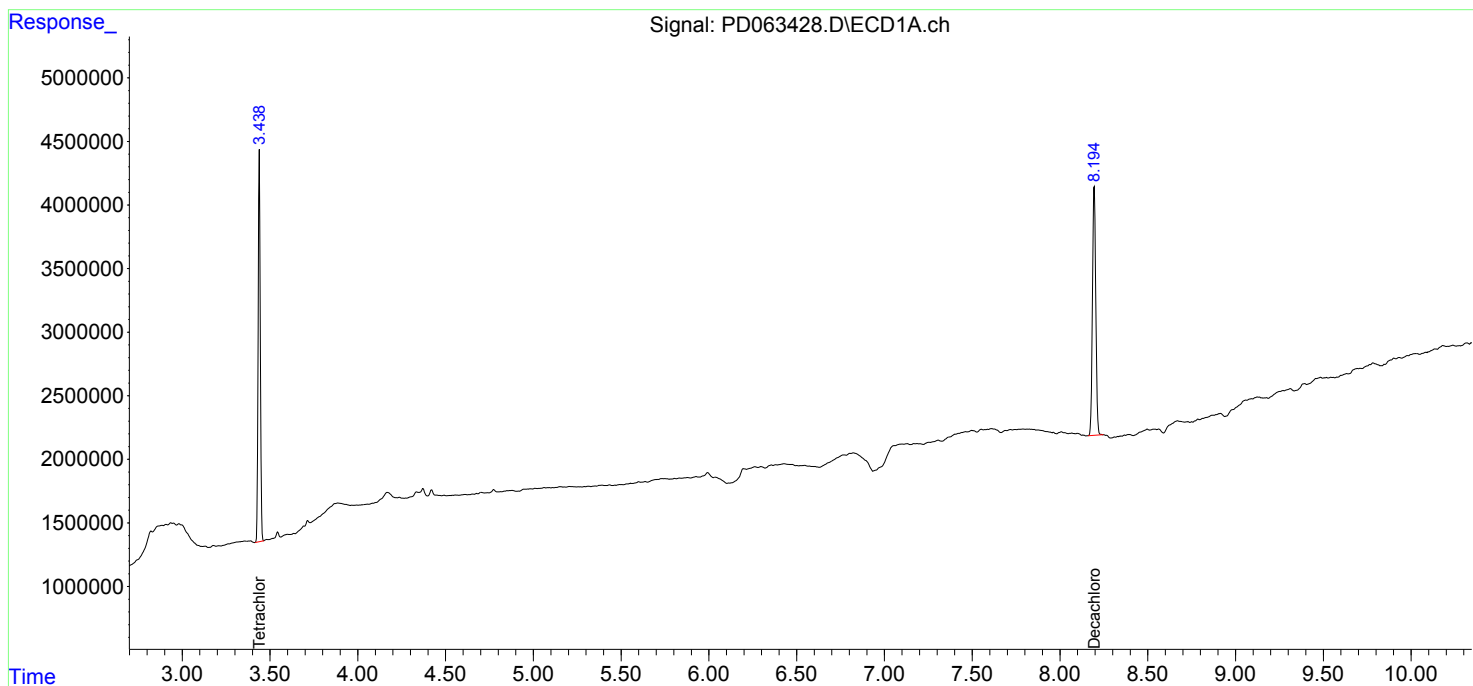
(f)=RT Delta > 1/2 Window (#)=Amounts differ by > 25% (m)=manual int.

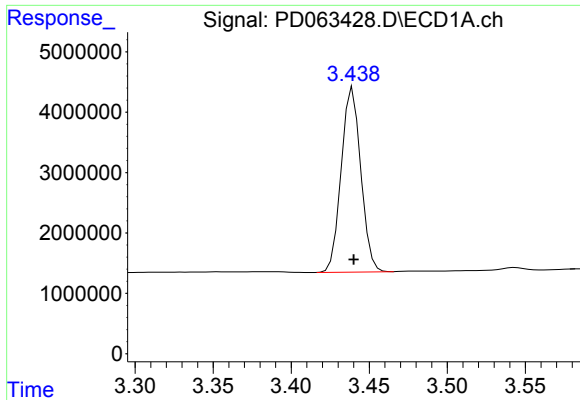
Data Path : Z:\pestpcbsrv\HPCHEM1\ECD\_D\Data\PD060421\  
 Data File : PD063428.D  
 Signal(s) : Signal #1: ECD1A.ch Signal #2: ECD2B.ch  
 Acq On : 03 Jun 2021 16:46  
 Operator : AR\AJ  
 Sample : I.BLK  
 Misc :  
 ALS Vial : 2 Sample Multiplier: 1

Instrument :  
 ECD\_D  
 ClientSampled :  
 I.BLK

Integration File signal 1: autoint1.e  
 Integration File signal 2: autoint2.e  
 Quant Time: Jun 03 17:22:45 2021  
 Quant Method : Z:\pestpcbsrv\HPCHEM1\ECD\_D\Method\PD060221.M  
 Quant Title : GC Extractables  
 QLast Update : Thu Jun 03 01:33:41 2021  
 Response via : Initial Calibration  
 Integrator: ChemStation

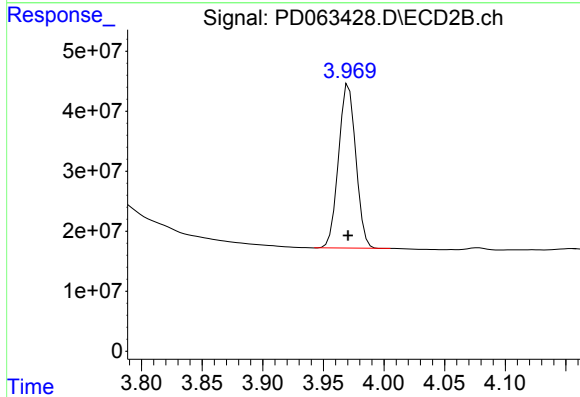
Volume Inj. : 2 µl  
 Signal #1 Phase : ZB-MR2 Signal #2 Phase: ZB-MR1  
 Signal #1 Info : 30M x 0.32mm x0.2 Signal #2 Info : 30M x 0.32mm x 0.50µm



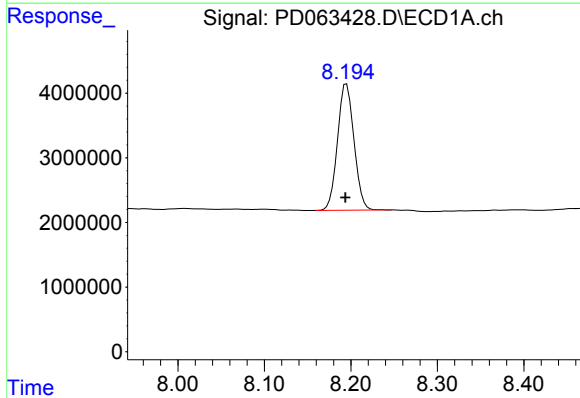


#1 Tetrachloro-m-xylene  
 R.T.: 3.439 min  
 Delta R.T.: 0.000 min  
 Response: 26675786  
 Conc: 19.28 ng/ml

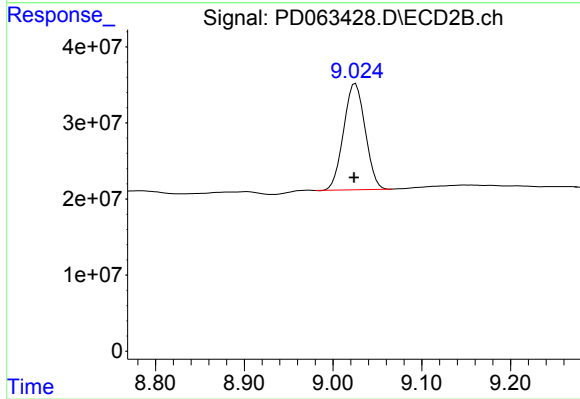
Instrument :  
 ECD\_D  
 ClientSampled :  
 I.BLK



#1 Tetrachloro-m-xylene  
 R.T.: 3.971 min  
 Delta R.T.: 0.000 min  
 Response: 270394351  
 Conc: 20.18 ng/ml



#28 Decachlorobiphenyl  
 R.T.: 8.195 min  
 Delta R.T.: 0.001 min  
 Response: 25760984  
 Conc: 16.38 ng/ml



#28 Decachlorobiphenyl  
 R.T.: 9.025 min  
 Delta R.T.: 0.002 min  
 Response: 235533770  
 Conc: 17.04 ng/ml