

Data Path : Z:\pestpcbsrv\HPCHEM1\ECD_D\Data\PD060421\
 Data File : PD063429.D
 Signal(s) : Signal #1: ECD1A.ch Signal #2: ECD2B.ch
 Acq On : 03 Jun 2021 17:18
 Operator : AR\AJ
 Sample : PSTDCCC050
 Misc :
 ALS Vial : 4 Sample Multiplier: 1

Instrument :
 ECD_D
 ClientSampleId :
 PSTDCCC050

Integration File signal 1: autoint1.e
 Integration File signal 2: autoint2.e
 Quant Time: Jun 03 17:32:34 2021
 Quant Method : Z:\pestpcbsrv\HPCHEM1\ECD_D\Method\PD060221.M
 Quant Title : GC Extractables
 QLast Update : Thu Jun 03 01:33:41 2021
 Response via : Initial Calibration
 Integrator: ChemStation

Volume Inj. : 2 µl
 Signal #1 Phase : ZB-MR2 Signal #2 Phase: ZB-MR1
 Signal #1 Info : 30M x 0.32mm x0.2 Signal #2 Info : 30M x 0.32mm x 0.50µm

Compound	RT#1	RT#2	Resp#1	Resp#2	ng/ml	ng/ml

System Monitoring Compounds						
1) SA Tetrachlo...	3.445	3.971	73017874	681.6E6	52.768	50.873
28) SA Decachlor...	8.201	9.029	72017467	676.5E6	45.792	48.953
Target Compounds						
2) A alpha-BHC	3.881	4.359	113.9E6	1102.3E6	54.462	53.325
3) MA gamma-BHC...	4.164	4.644	106.8E6	1011.8E6	54.368	53.349
4) MA Heptachlor	4.465	5.151	104.3E6	998.1E6	53.725	52.229
5) MB Aldrin	4.713	5.456	101.2E6	985.6E6	53.568	50.687
6) B beta-BHC	4.415	4.815	43899314	423.1E6	50.461	53.737
7) B delta-BHC	4.619	5.031	106.8E6	933.7E6	54.432	49.687
8) B Heptachlo...	5.156	5.842	92405456	970.1E6	52.732	53.065
9) A Endosulfan I	5.495	6.198	85179060	826.5E6	51.678	48.510
10) B gamma-Chl...	5.383	6.076	93726389	903.9E6	52.483	48.658
11) B alpha-Chl...	5.442	6.149	91157305	857.7E6	51.551	48.243
12) B 4,4'-DDE	5.606	6.306	90339603	867.6E6	51.957	47.744
13) MA Dieldrin	5.739	6.455	90562833	870.6E6	51.561	48.094
14) MA Endrin	5.996	6.673	82161280	743.8E6	51.659	48.392
15) B Endosulfa...	6.270	6.882	74262076	674.3E6	52.966	45.724
16) A 4,4'-DDD	6.123	6.796	75186398	687.3E6	51.844	46.191
17) MA 4,4'-DDT	6.364	7.094	75340574	726.8E6	52.149	48.282
18) B Endrin al...	6.438	7.006	58844055	555.3E6	49.456	45.834
19) B Endosulfa...	6.652	7.229	70661514	705.1E6	55.290	46.495
20) A Methoxychlor	6.909	7.553	39514042	338.0E6	49.543	45.641
21) B Endrin ke...	7.143	7.700	87695989	685.7E6	49.432	46.894
22) Mirex	7.332	8.153	61270467	447.4E6	53.374	44.740

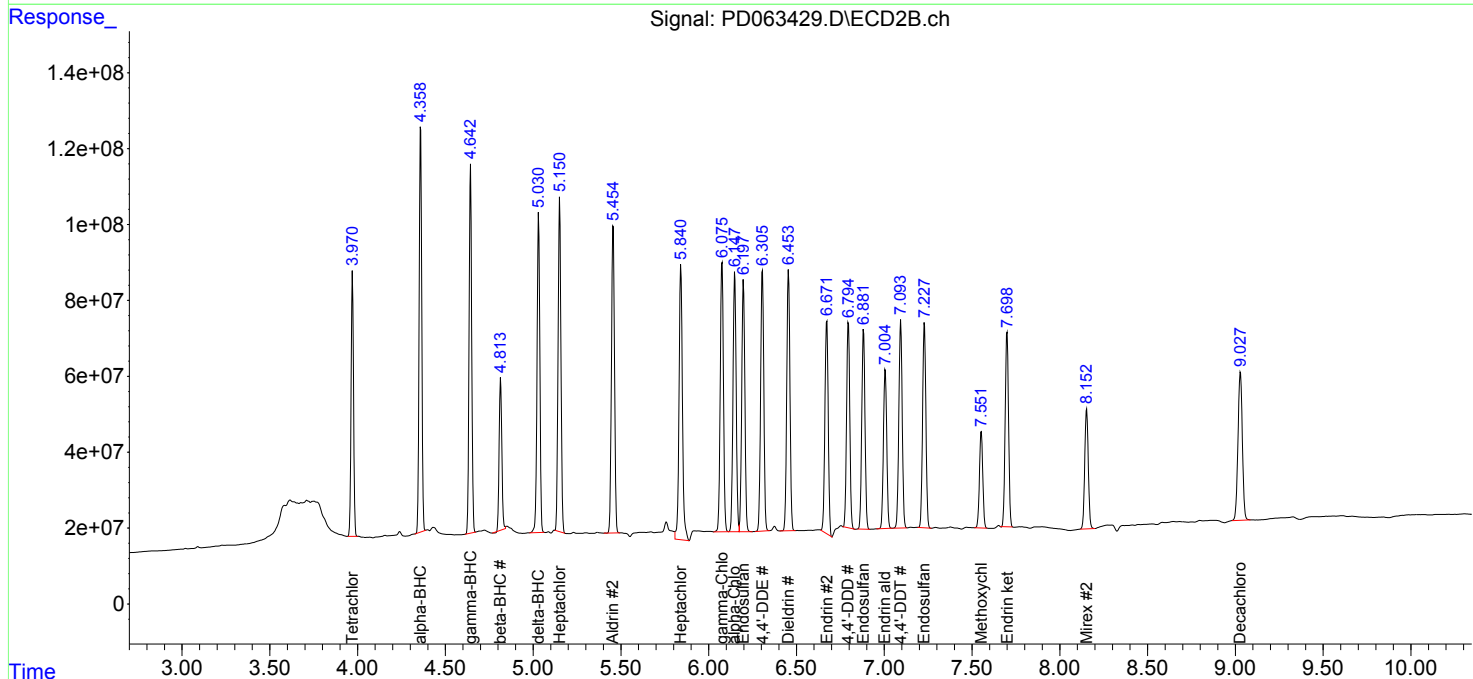
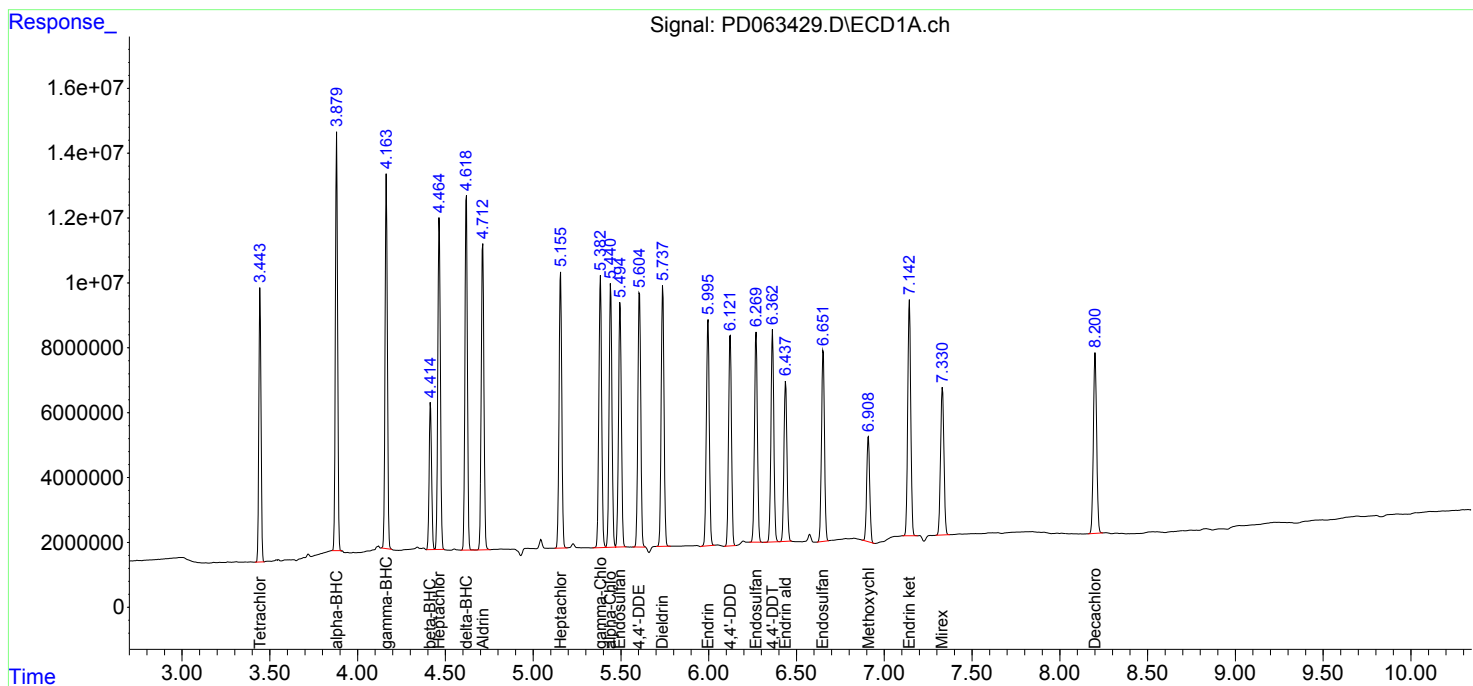
(f)=RT Delta > 1/2 Window (#)=Amounts differ by > 25% (m)=manual int.

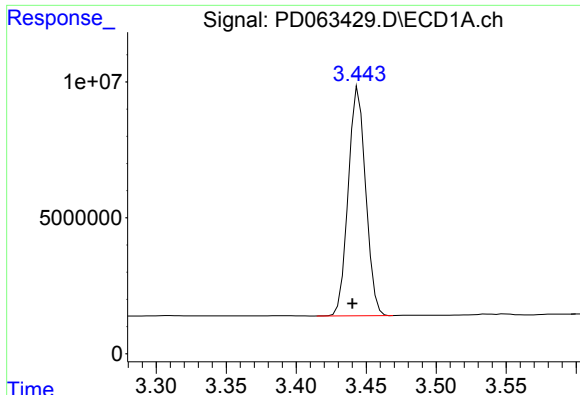
Data Path : Z:\pestpcbsrv\HPCHEM1\ECD_D\Data\PD060421\
 Data File : PD063429.D
 Signal(s) : Signal #1: ECD1A.ch Signal #2: ECD2B.ch
 Acq On : 03 Jun 2021 17:18
 Operator : AR\AJ
 Sample : PSTDCCC050
 Misc :
 ALS Vial : 4 Sample Multiplier: 1

Instrument :
 ECD_D
 ClientSampled :
 PSTDCCC050

Integration File signal 1: autoint1.e
 Integration File signal 2: autoint2.e
 Quant Time: Jun 03 17:32:34 2021
 Quant Method : Z:\pestpcbsrv\HPCHEM1\ECD_D\Method\PD060221.M
 Quant Title : GC Extractables
 QLast Update : Thu Jun 03 01:33:41 2021
 Response via : Initial Calibration
 Integrator: ChemStation

Volume Inj. : 2 µl
 Signal #1 Phase : ZB-MR2 Signal #2 Phase: ZB-MR1
 Signal #1 Info : 30M x 0.32mm x0.2 Signal #2 Info : 30M x 0.32mm x 0.50µm

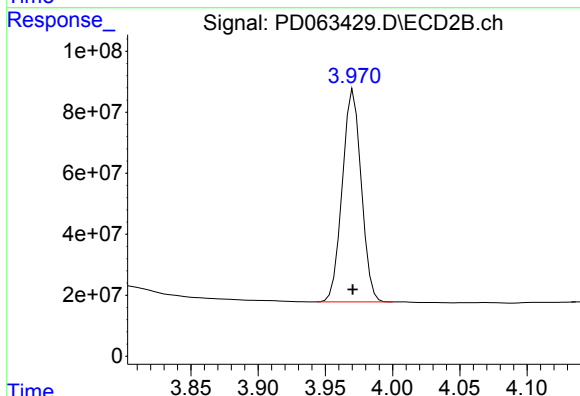




#1 Tetrachloro-m-xylene

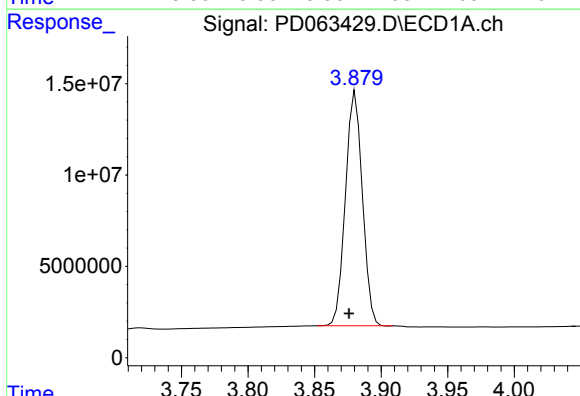
R.T.: 3.445 min
 Delta R.T.: 0.005 min
 Response: 73017874
 Conc: 52.77 ng/ml

Instrument :
 ECD_D
 ClientSampleId :
 PSTDCCC050



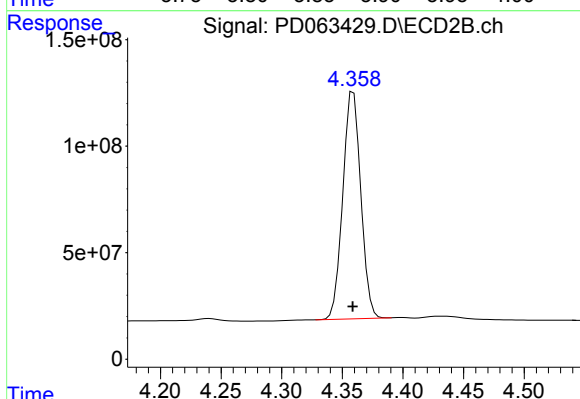
#1 Tetrachloro-m-xylene

R.T.: 3.971 min
 Delta R.T.: 0.000 min
 Response: 681622017
 Conc: 50.87 ng/ml



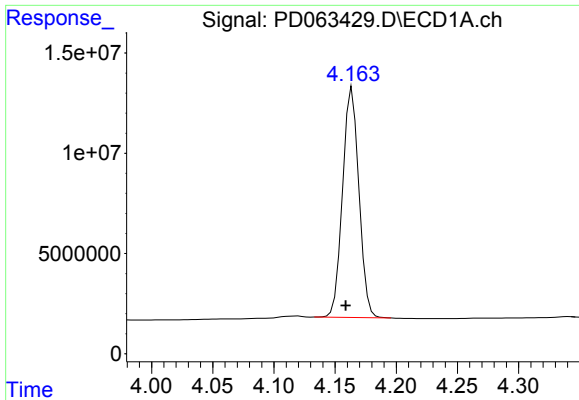
#2 alpha-BHC

R.T.: 3.881 min
 Delta R.T.: 0.005 min
 Response: 113872521
 Conc: 54.46 ng/ml



#2 alpha-BHC

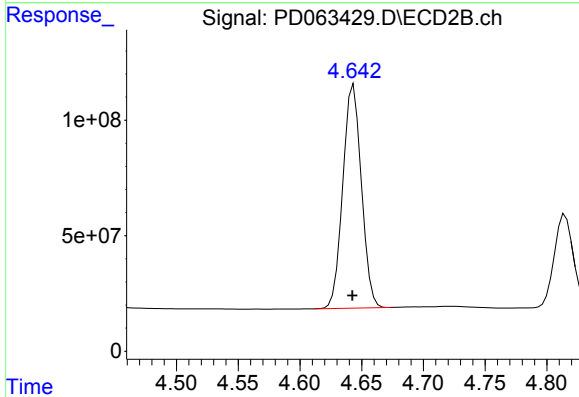
R.T.: 4.359 min
 Delta R.T.: 0.000 min
 Response: 1102262510
 Conc: 53.32 ng/ml



#3 gamma-BHC (Lindane)

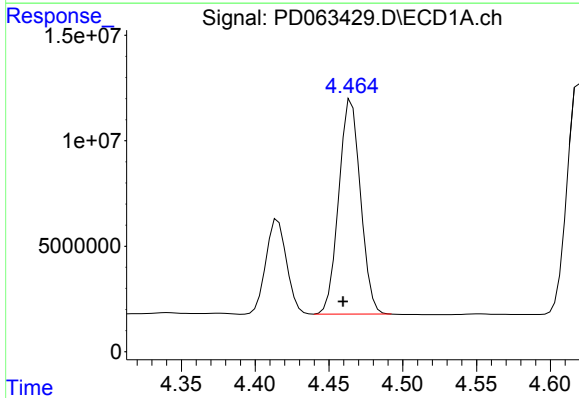
R.T.: 4.164 min
Delta R.T.: 0.005 min
Response: 106775794
Conc: 54.37 ng/ml

Instrument :
ECD_D
ClientSampleId :
PSTDCCC050



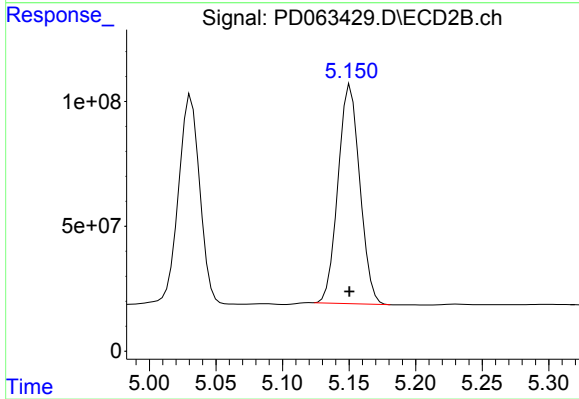
#3 gamma-BHC (Lindane)

R.T.: 4.644 min
Delta R.T.: 0.000 min
Response: 1011842735
Conc: 53.35 ng/ml



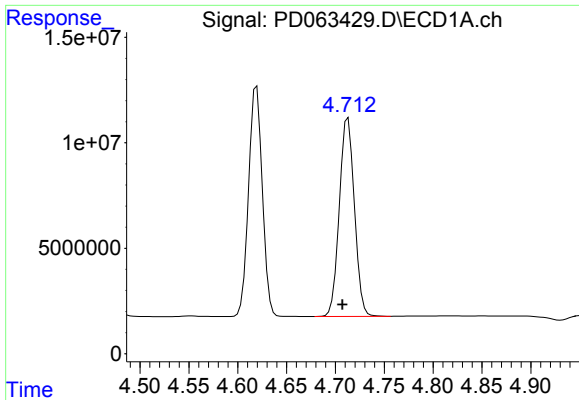
#4 Heptachlor

R.T.: 4.465 min
Delta R.T.: 0.006 min
Response: 104312236
Conc: 53.73 ng/ml



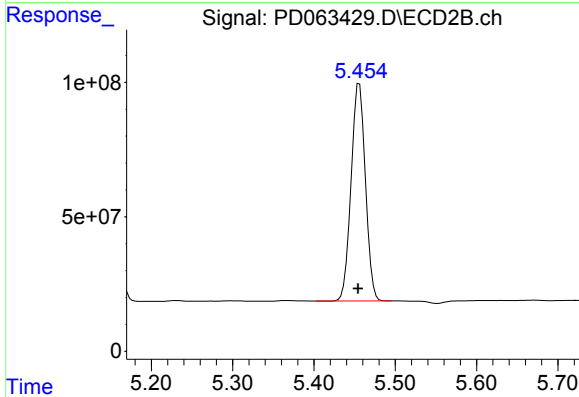
#4 Heptachlor

R.T.: 5.151 min
Delta R.T.: 0.000 min
Response: 998132283
Conc: 52.23 ng/ml

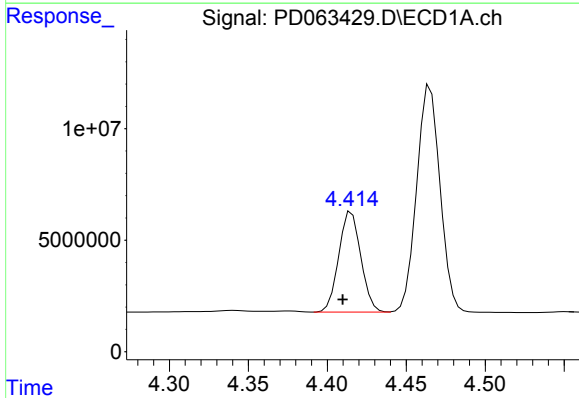


#5 Aldrin
 R.T.: 4.713 min
 Delta R.T.: 0.006 min
 Response: 101237683
 Conc: 53.57 ng/ml

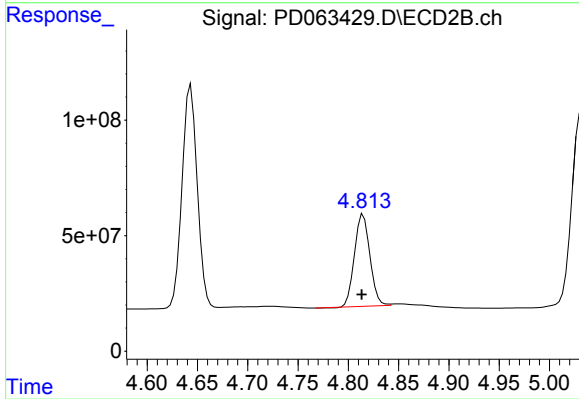
Instrument :
 ECD_D
 ClientSampleId :
 PSTDCCC050



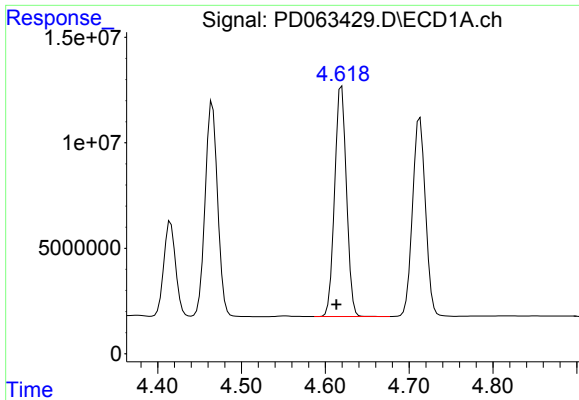
#5 Aldrin
 R.T.: 5.456 min
 Delta R.T.: 0.002 min
 Response: 985556178
 Conc: 50.69 ng/ml



#6 beta-BHC
 R.T.: 4.415 min
 Delta R.T.: 0.006 min
 Response: 43899314
 Conc: 50.46 ng/ml

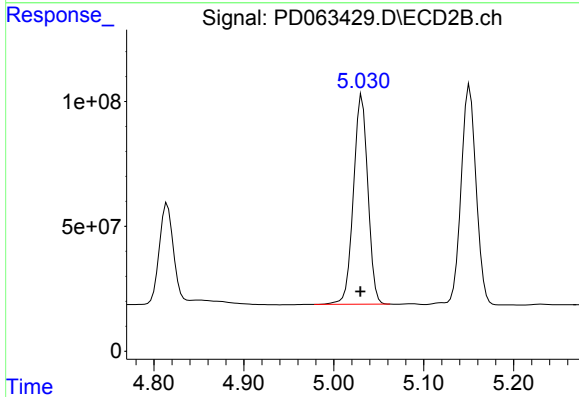


#6 beta-BHC
 R.T.: 4.815 min
 Delta R.T.: 0.001 min
 Response: 423084208
 Conc: 53.74 ng/ml

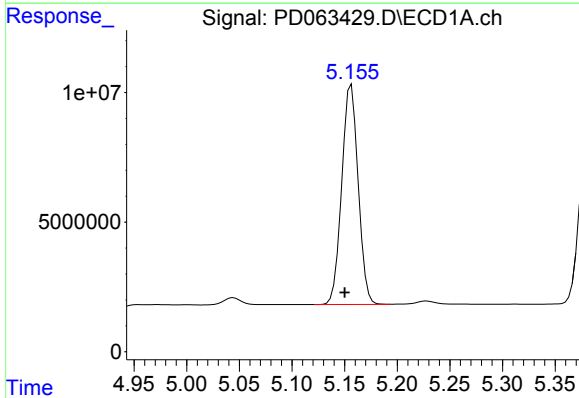


#7 delta-BHC
R.T.: 4.619 min
Delta R.T.: 0.006 min
Response: 106753372
Conc: 54.43 ng/ml

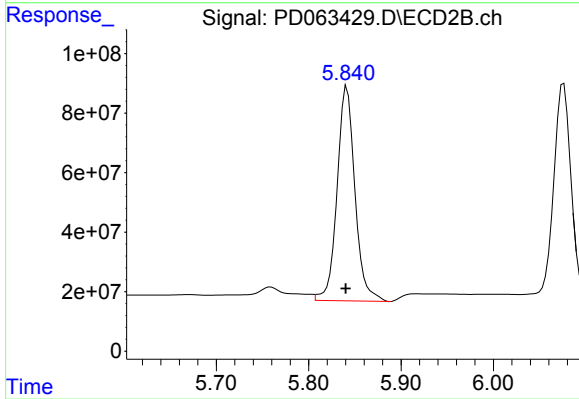
Instrument :
ECD_D
ClientSampleId :
PSTDCCC050



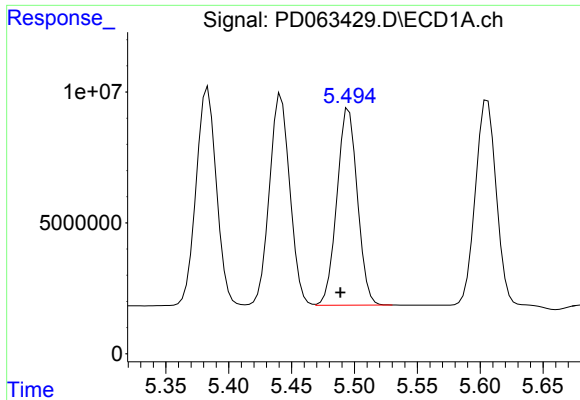
#7 delta-BHC
R.T.: 5.031 min
Delta R.T.: 0.002 min
Response: 933725787
Conc: 49.69 ng/ml



#8 Heptachlor epoxide
R.T.: 5.156 min
Delta R.T.: 0.006 min
Response: 92405456
Conc: 52.73 ng/ml



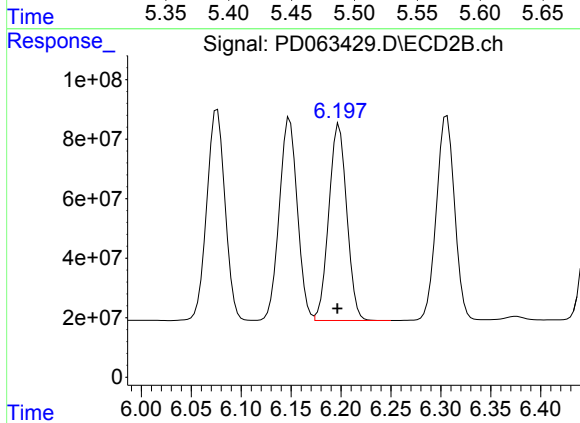
#8 Heptachlor epoxide
R.T.: 5.842 min
Delta R.T.: 0.001 min
Response: 970051553
Conc: 53.06 ng/ml



#9 Endosulfan I

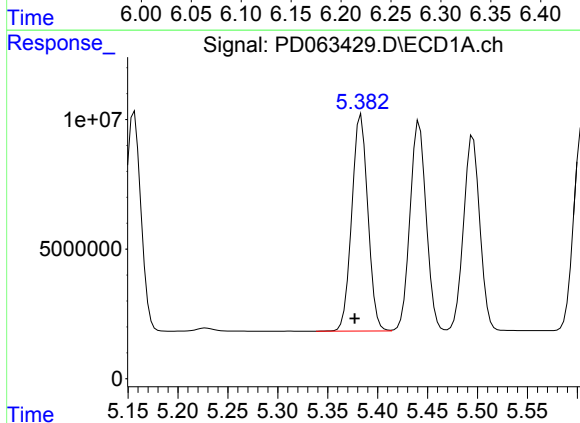
R.T.: 5.495 min
Delta R.T.: 0.007 min
Response: 85179060
Conc: 51.68 ng/ml

Instrument :
ECD_D
ClientSampleId :
PSTDCCC050



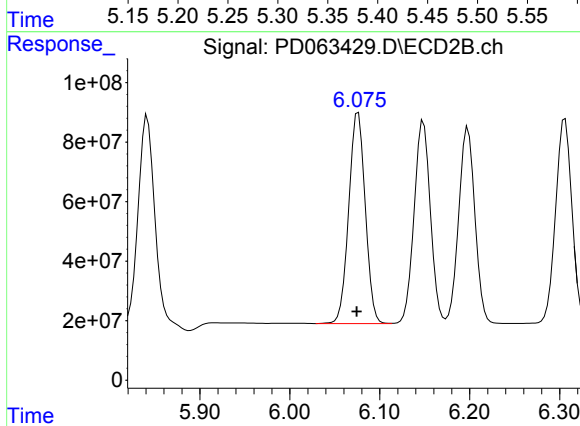
#9 Endosulfan I

R.T.: 6.198 min
Delta R.T.: 0.002 min
Response: 826529809
Conc: 48.51 ng/ml



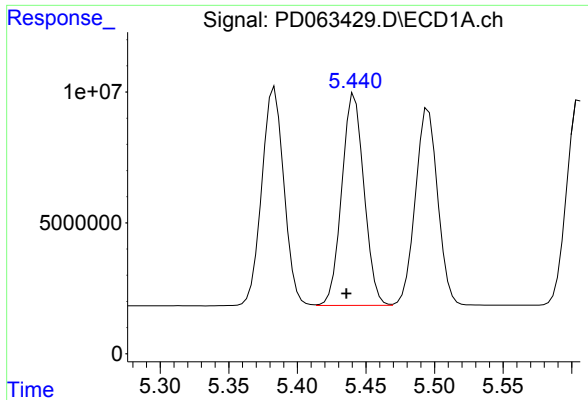
#10 gamma-Chlordane

R.T.: 5.383 min
Delta R.T.: 0.006 min
Response: 93726389
Conc: 52.48 ng/ml



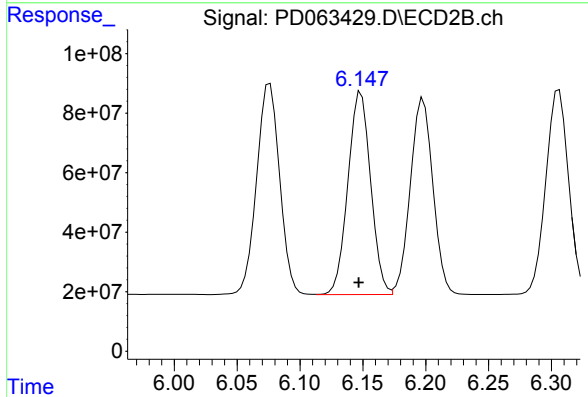
#10 gamma-Chlordane

R.T.: 6.076 min
Delta R.T.: 0.002 min
Response: 903899679
Conc: 48.66 ng/ml

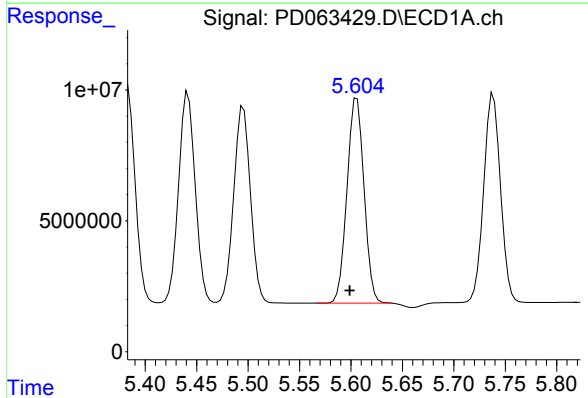


#11 alpha-Chlordane
 R.T.: 5.442 min
 Delta R.T.: 0.006 min
 Response: 91157305
 Conc: 51.55 ng/ml

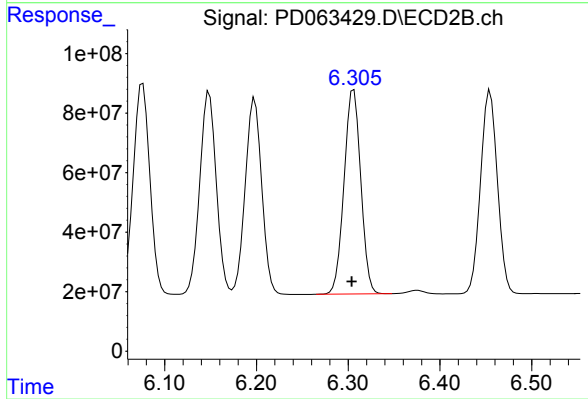
Instrument :
 ECD_D
 ClientSampleId :
 PSTDCCC050



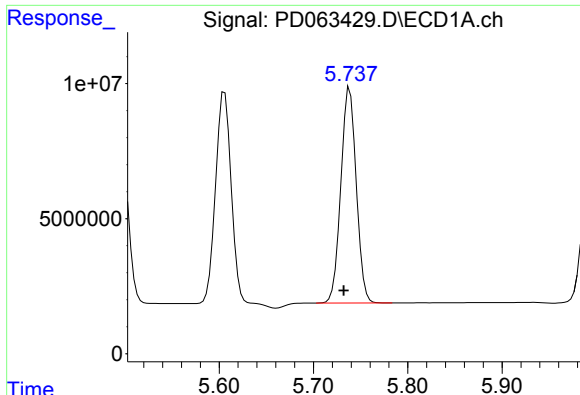
#11 alpha-Chlordane
 R.T.: 6.149 min
 Delta R.T.: 0.002 min
 Response: 857683693
 Conc: 48.24 ng/ml



#12 4,4'-DDE
 R.T.: 5.606 min
 Delta R.T.: 0.007 min
 Response: 90339603
 Conc: 51.96 ng/ml



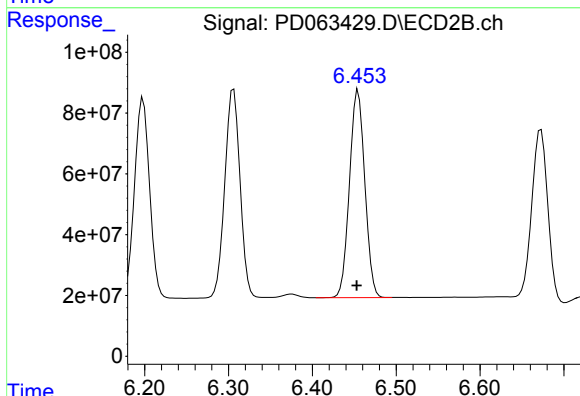
#12 4,4'-DDE
 R.T.: 6.306 min
 Delta R.T.: 0.002 min
 Response: 867641006
 Conc: 47.74 ng/ml



#13 Dieldrin

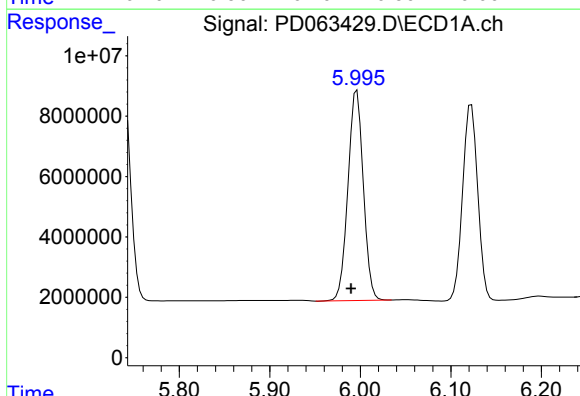
R.T.: 5.739 min
 Delta R.T.: 0.006 min
 Response: 90562833
 Conc: 51.56 ng/ml

Instrument :
 ECD_D
 ClientSampleId :
 PSTDCCC050



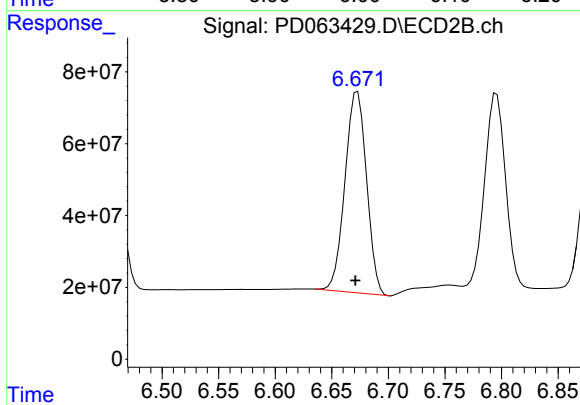
#13 Dieldrin

R.T.: 6.455 min
 Delta R.T.: 0.002 min
 Response: 870601921
 Conc: 48.09 ng/ml



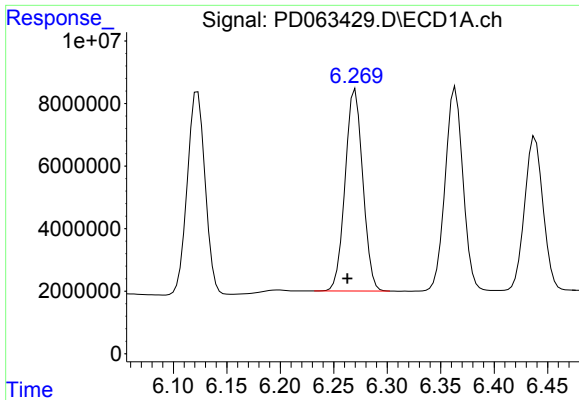
#14 Endrin

R.T.: 5.996 min
 Delta R.T.: 0.007 min
 Response: 82161280
 Conc: 51.66 ng/ml



#14 Endrin

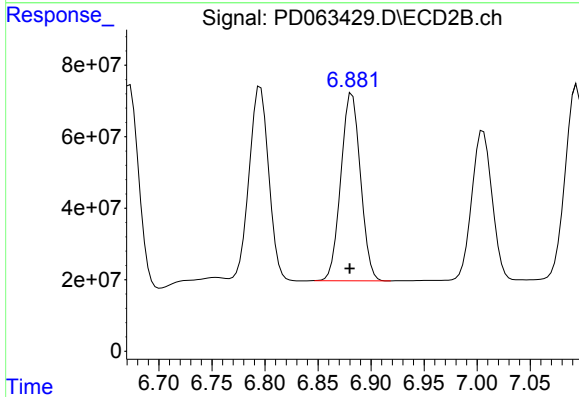
R.T.: 6.673 min
 Delta R.T.: 0.002 min
 Response: 743811374
 Conc: 48.39 ng/ml



#15 Endosulfan II

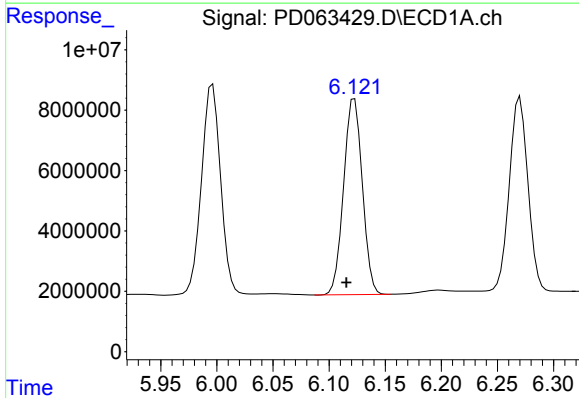
R.T.: 6.270 min
 Delta R.T.: 0.007 min
 Response: 74262076
 Conc: 52.97 ng/ml

Instrument :
 ECD_D
 ClientSampleId :
 PSTDCCC050



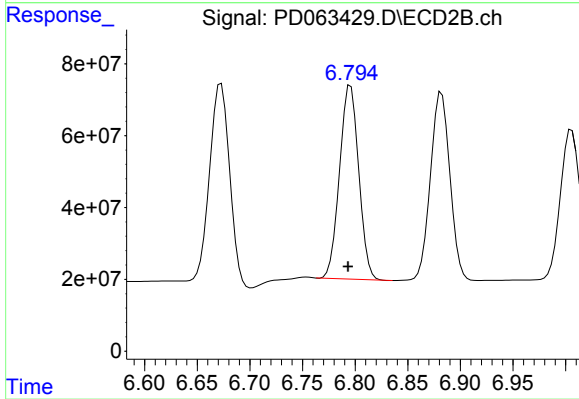
#15 Endosulfan II

R.T.: 6.882 min
 Delta R.T.: 0.002 min
 Response: 674250948
 Conc: 45.72 ng/ml



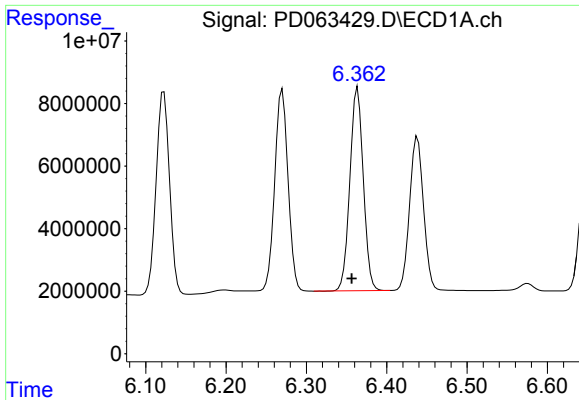
#16 4,4'-DDD

R.T.: 6.123 min
 Delta R.T.: 0.007 min
 Response: 75186398
 Conc: 51.84 ng/ml



#16 4,4'-DDD

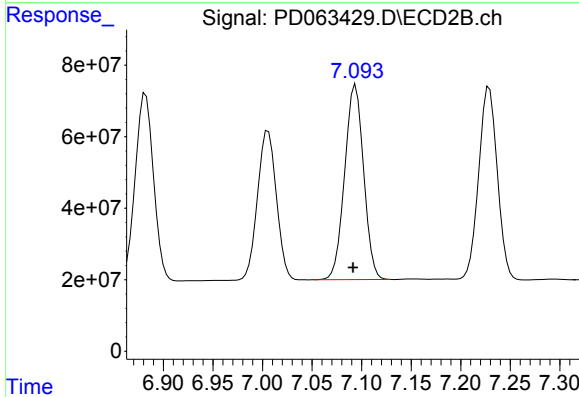
R.T.: 6.796 min
 Delta R.T.: 0.002 min
 Response: 687267388
 Conc: 46.19 ng/ml



#17 4,4'-DDT

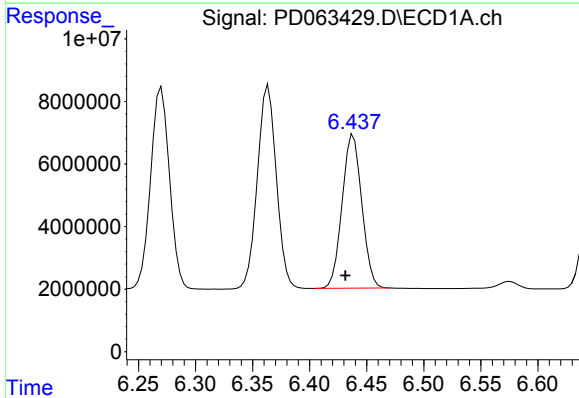
R.T.: 6.364 min
 Delta R.T.: 0.008 min
 Response: 75340574
 Conc: 52.15 ng/ml

Instrument :
 ECD_D
 ClientSampleId :
 PSTDCCC050



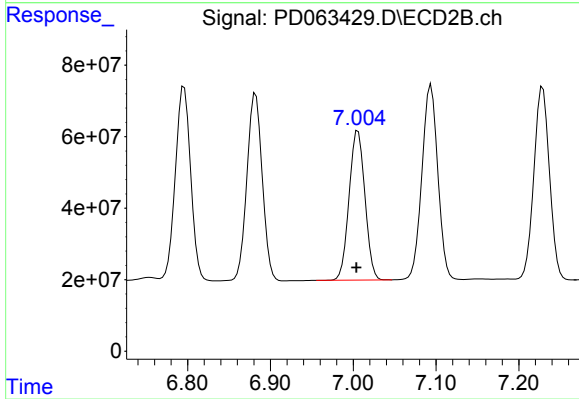
#17 4,4'-DDT

R.T.: 7.094 min
 Delta R.T.: 0.003 min
 Response: 726750113
 Conc: 48.28 ng/ml



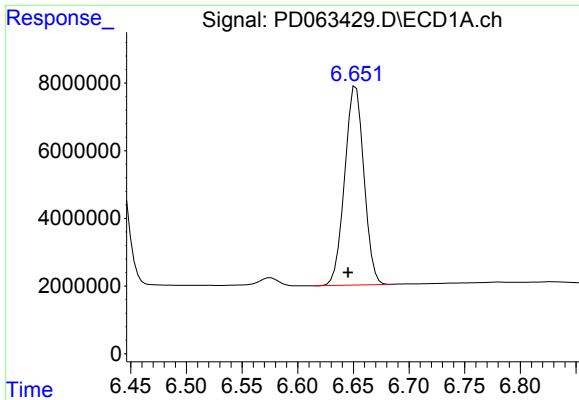
#18 Endrin aldehyde

R.T.: 6.438 min
 Delta R.T.: 0.007 min
 Response: 58844055
 Conc: 49.46 ng/ml



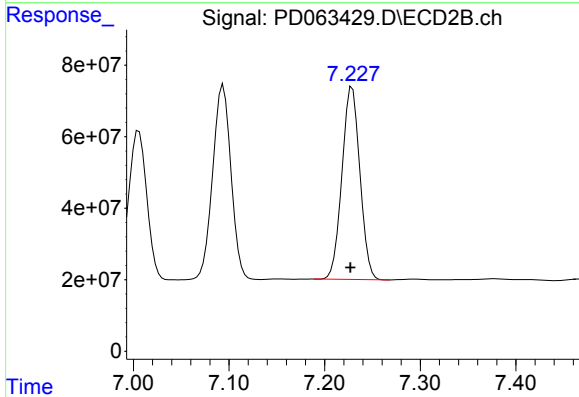
#18 Endrin aldehyde

R.T.: 7.006 min
 Delta R.T.: 0.002 min
 Response: 555328492
 Conc: 45.83 ng/ml

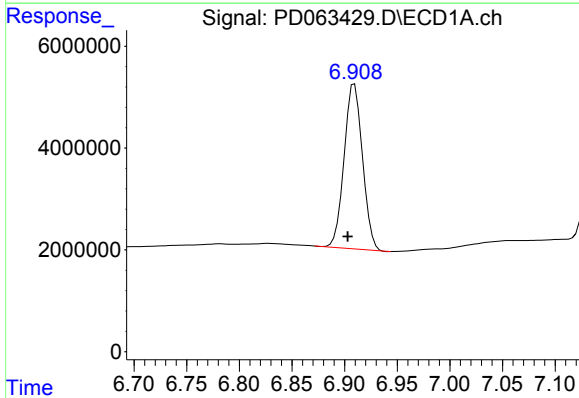


#19 Endosulfan Sulfate
 R.T.: 6.652 min
 Delta R.T.: 0.007 min
 Response: 70661514
 Conc: 55.29 ng/ml

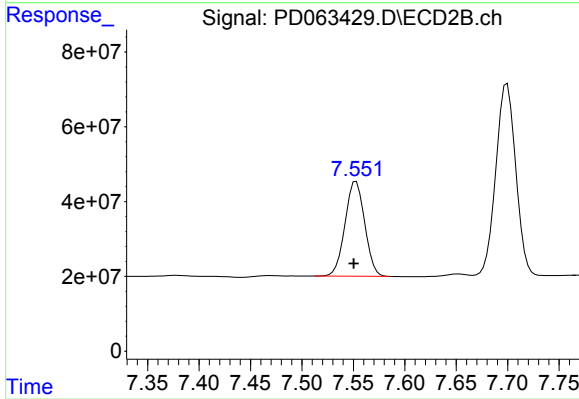
Instrument :
 ECD_D
ClientSampleId :
 PSTDCCC050



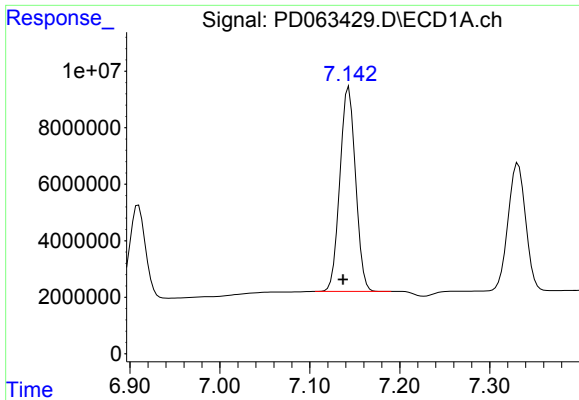
#19 Endosulfan Sulfate
 R.T.: 7.229 min
 Delta R.T.: 0.002 min
 Response: 705075441
 Conc: 46.50 ng/ml



#20 Methoxychlor
 R.T.: 6.909 min
 Delta R.T.: 0.006 min
 Response: 39514042
 Conc: 49.54 ng/ml

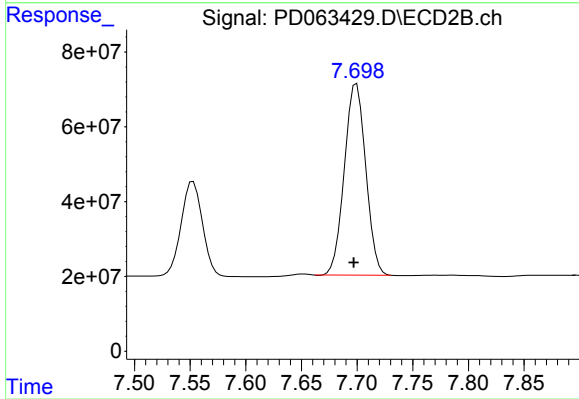


#20 Methoxychlor
 R.T.: 7.553 min
 Delta R.T.: 0.002 min
 Response: 338048506
 Conc: 45.64 ng/ml

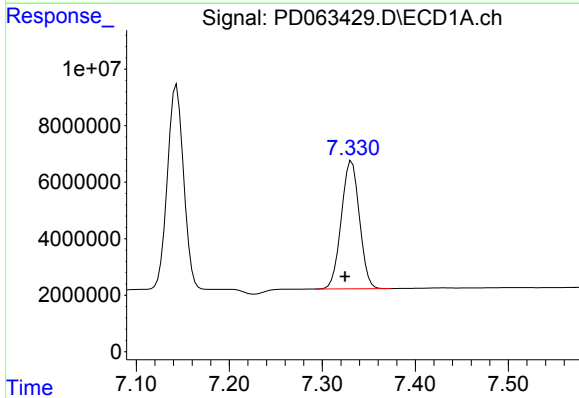


#21 Endrin ketone
 R.T.: 7.143 min
 Delta R.T.: 0.006 min
 Response: 87695989
 Conc: 49.43 ng/ml

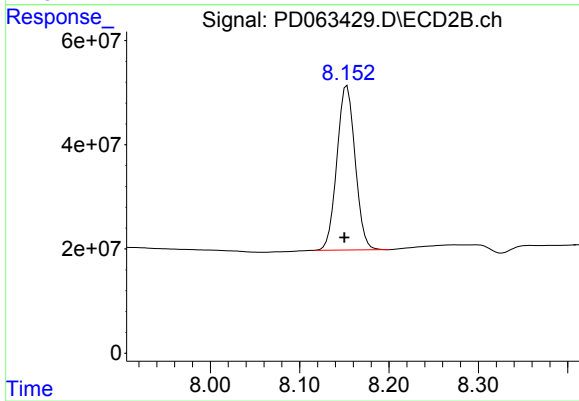
Instrument :
 ECD_D
 ClientSampleId :
 PSTDCCC050



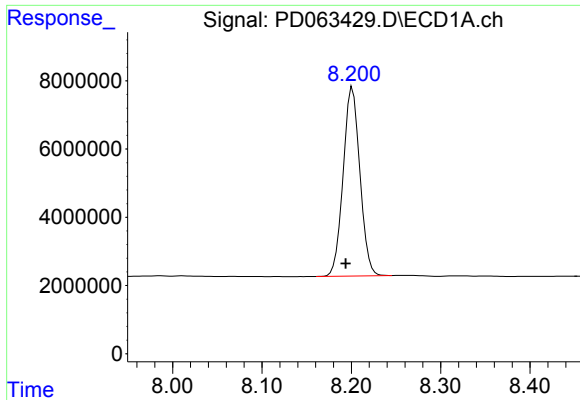
#21 Endrin ketone
 R.T.: 7.700 min
 Delta R.T.: 0.003 min
 Response: 685692423
 Conc: 46.89 ng/ml



#22 Mirex
 R.T.: 7.332 min
 Delta R.T.: 0.007 min
 Response: 61270467
 Conc: 53.37 ng/ml



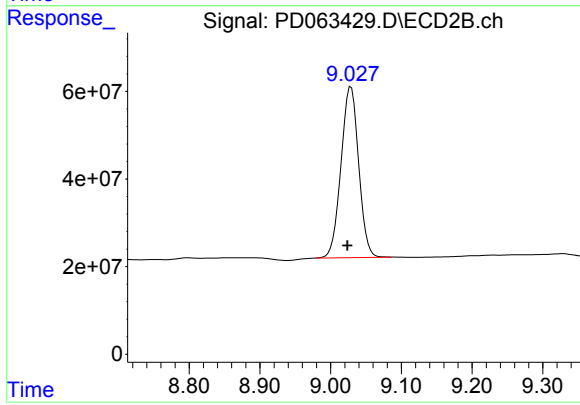
#22 Mirex
 R.T.: 8.153 min
 Delta R.T.: 0.003 min
 Response: 447361397
 Conc: 44.74 ng/ml



#28 Decachlorobiphenyl

R.T.: 8.201 min
Delta R.T.: 0.008 min
Response: 72017467
Conc: 45.79 ng/ml

Instrument :
ECD_D
ClientSampleId :
PSTDCCC050



#28 Decachlorobiphenyl

R.T.: 9.029 min
Delta R.T.: 0.005 min
Response: 676464474
Conc: 48.95 ng/ml