

Data Path : Z:\pestpcbsrv\HPCHEM1\ECD_D\Data\PD060421\
 Data File : PD063431.D
 Signal(s) : Signal #1: ECD1A.ch Signal #2: ECD2B.ch
 Acq On : 03 Jun 2021 17:48
 Operator : AR\AJ
 Sample : PB136813BS
 Misc :
 ALS Vial : 27 Sample Multiplier: 1

Instrument :
 ECD_D
 ClientSampleId :
 PB136813BS

Integration File signal 1: autoint1.e
 Integration File signal 2: autoint2.e
 Quant Time: Jun 04 02:28:50 2021
 Quant Method : Z:\pestpcbsrv\HPCHEM1\ECD_D\Method\PD060221.M
 Quant Title : GC Extractables
 QLast Update : Thu Jun 03 01:33:41 2021
 Response via : Initial Calibration
 Integrator: ChemStation

Volume Inj. : 2 µl
 Signal #1 Phase : ZB-MR2 Signal #2 Phase: ZB-MR1
 Signal #1 Info : 30M x 0.32mm x0.2 Signal #2 Info : 30M x 0.32mm x 0.50µm

	Compound	RT#1	RT#2	Resp#1	Resp#2	ng/ml	ng/ml

System Monitoring Compounds							
1)	SA Tetrachlo...	3.440	3.971	23348896	243.4E6	16.874	18.162
28)	SA Decachlor...	8.196	9.025	24591241	238.6E6	15.636	17.266
Target Compounds							
2)	A alpha-BHC	3.876	4.359	93546140	935.1E6	44.740	45.240
3)	MA gamma-BHC...	4.159	4.643	86788827	859.6E6	44.191	45.321
4)	MA Heptachlor	4.460	5.151	86218656	853.4E6	44.406	44.653
5)	MB Aldrin	4.708	5.455	84038188	853.3E6	44.467	43.884
6)	B beta-BHC	4.410	4.814	36817128	356.9E6	42.321	45.329
7)	B delta-BHC	4.614	5.030	88091237	847.0E6	44.916	44.748
8)	B Heptachlo...	5.151	5.841	77552201	764.9E6	44.256	41.844
9)	A Endosulfan I	5.490	6.198	71971946	713.8E6	43.666	41.892
10)	B gamma-Chl...	5.378	6.075	78308663	790.4E6	43.849	42.550
11)	B alpha-Chl...	5.436	6.148	76853020	751.1E6	43.462	42.248
12)	B 4,4'-DDE	5.600	6.305	75835592	752.6E6	43.615	41.411
13)	MA Dieldrin	5.733	6.454	76550680	759.2E6	43.584	41.942
14)	MA Endrin	5.991	6.672	66400958	628.4E6	41.750	40.881
15)	B Endosulfa...	6.265	6.881	62865179	614.3E6	44.838	41.661
16)	A 4,4'-DDD	6.117	6.794	62674627	618.0E6	43.217	41.536
17)	MA 4,4'-DDT	6.358	7.092	61828888	606.9E6	42.797	40.318
18)	B Endrin al...	6.433	7.005	51591805	494.6E6	43.360	40.820
19)	B Endosulfa...	6.646	7.228	61842913	620.7E6	48.390	40.932
20)	A Methoxychlor	6.904	7.551	33379905	294.5E6	41.852	39.767
21)	B Endrin ke...	7.138	7.698	76024566	608.6E6	42.853	41.618
22)	Mirex	7.326	8.152	53583172	402.5E6	46.678	40.255

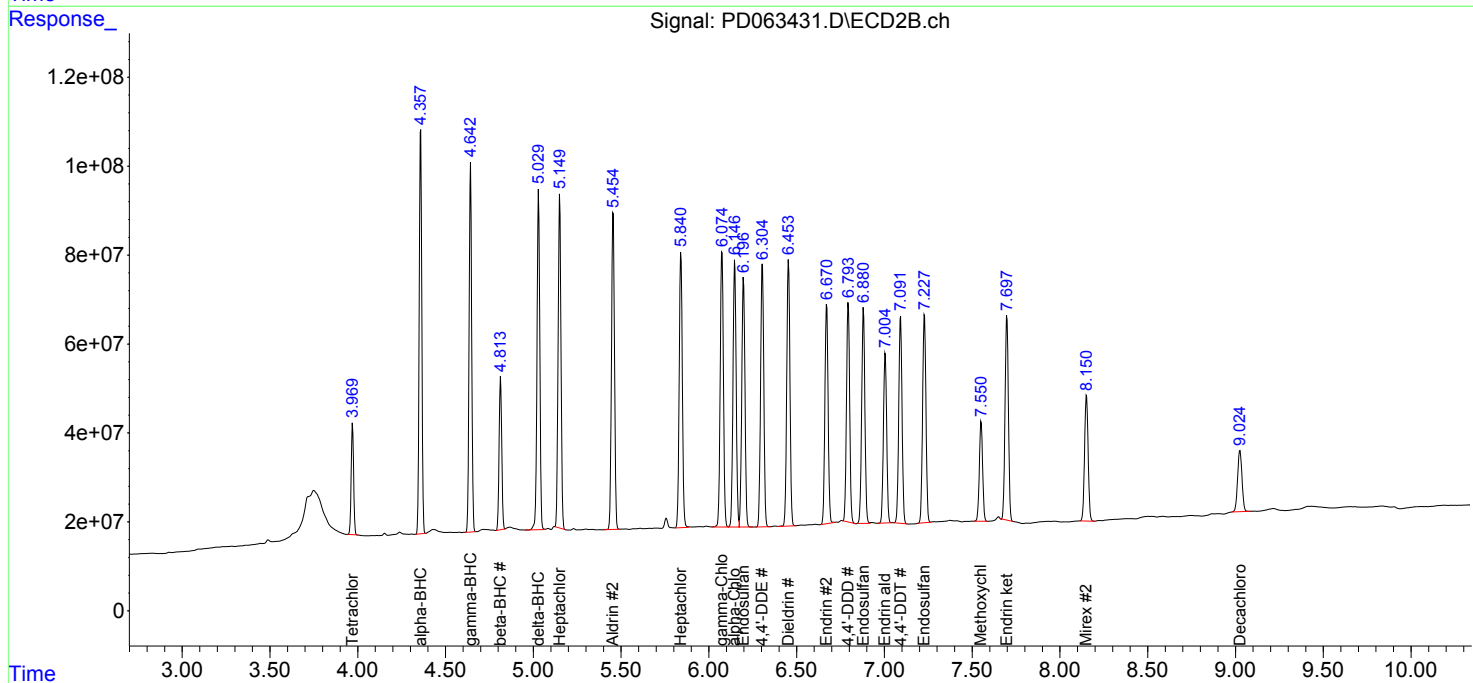
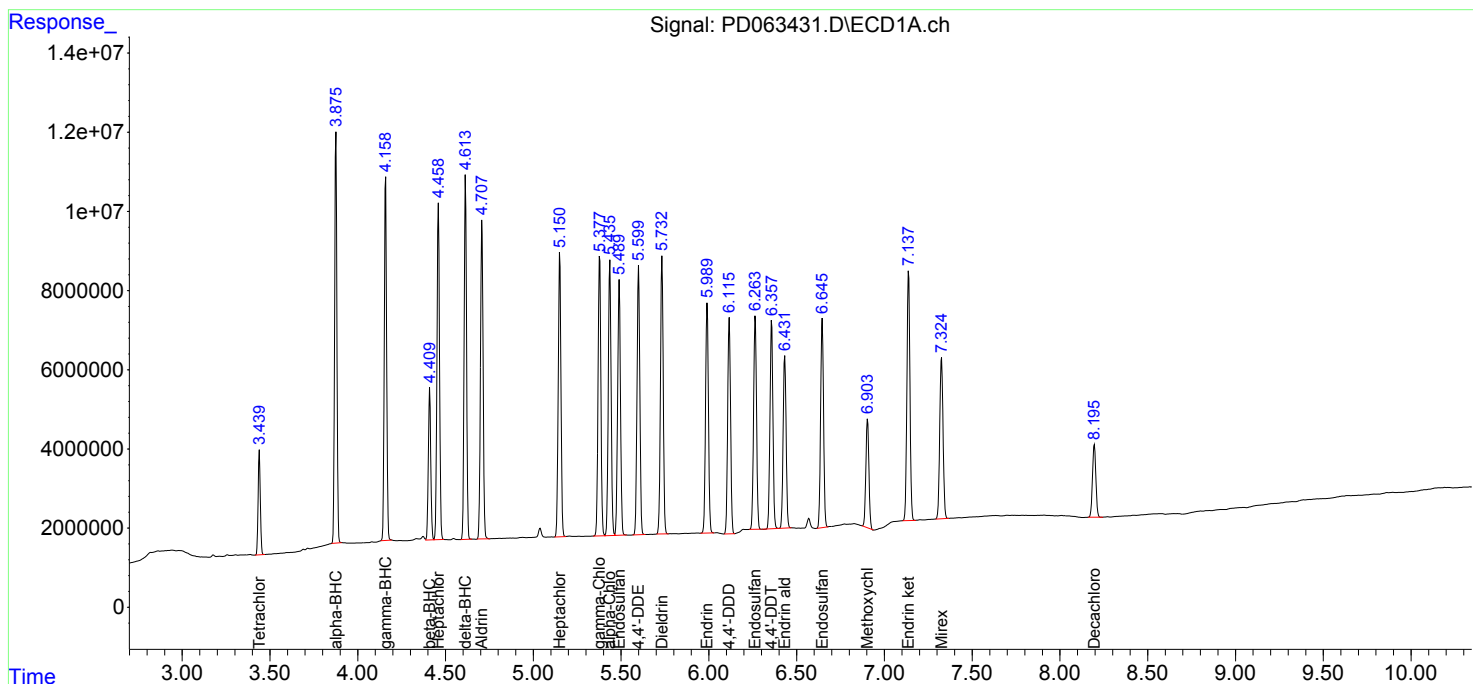
(f)=RT Delta > 1/2 Window (#)=Amounts differ by > 25% (m)=manual int.

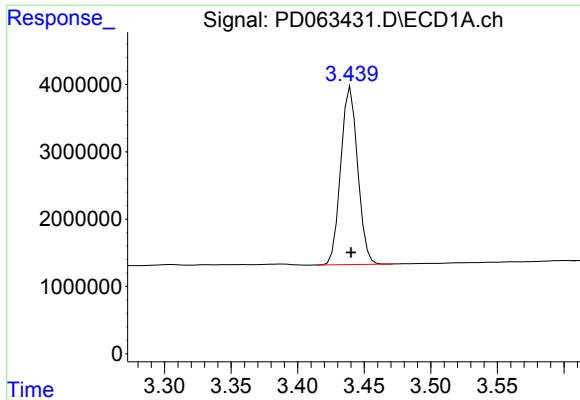
Data Path : Z:\pestpcbsrv\HPCHEM1\ECD_D\Data\PD060421\
 Data File : PD063431.D
 Signal(s) : Signal #1: ECD1A.ch Signal #2: ECD2B.ch
 Acq On : 03 Jun 2021 17:48
 Operator : AR\AJ
 Sample : PB136813BS
 Misc :
 ALS Vial : 27 Sample Multiplier: 1

Instrument :
 ECD_D
 ClientSampled :
 PB136813BS

Integration File signal 1: autoint1.e
 Integration File signal 2: autoint2.e
 Quant Time: Jun 04 02:28:50 2021
 Quant Method : Z:\pestpcbsrv\HPCHEM1\ECD_D\Method\PD060221.M
 Quant Title : GC Extractables
 QLast Update : Thu Jun 03 01:33:41 2021
 Response via : Initial Calibration
 Integrator: ChemStation

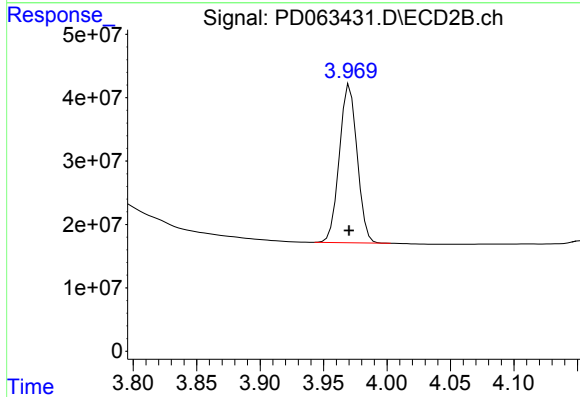
Volume Inj. : 2 µl
 Signal #1 Phase : ZB-MR2 Signal #2 Phase: ZB-MR1
 Signal #1 Info : 30M x 0.32mm x0.2 Signal #2 Info : 30M x 0.32mm x 0.50µm



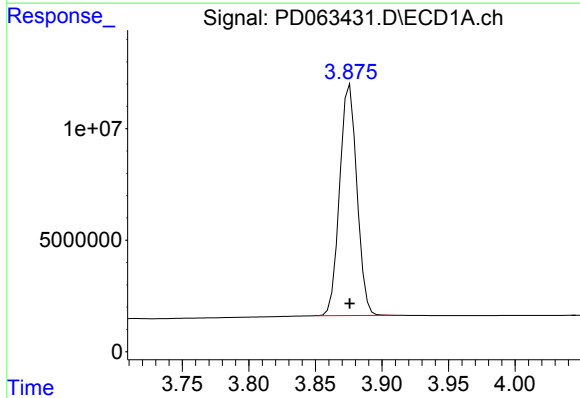


#1 Tetrachloro-m-xylene
 R.T.: 3.440 min
 Delta R.T.: 0.000 min
 Response: 23348896
 Conc: 16.87 ng/ml

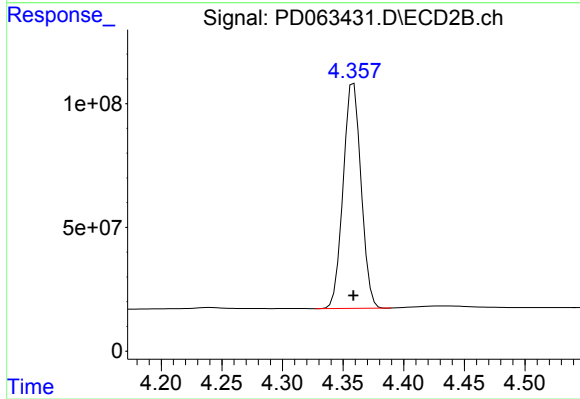
Instrument :
 ECD_D
 ClientSampleId :
 PB136813BS



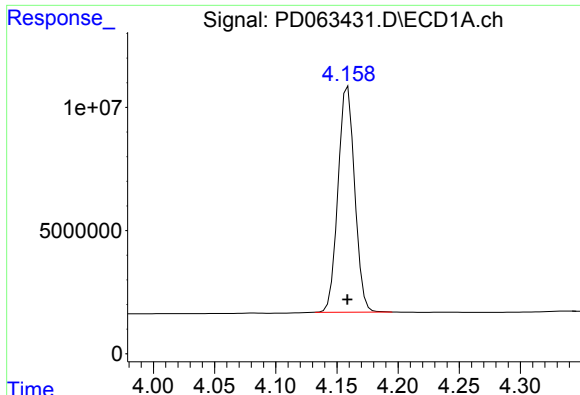
#1 Tetrachloro-m-xylene
 R.T.: 3.971 min
 Delta R.T.: 0.000 min
 Response: 243352405
 Conc: 18.16 ng/ml



#2 alpha-BHC
 R.T.: 3.876 min
 Delta R.T.: 0.000 min
 Response: 93546140
 Conc: 44.74 ng/ml



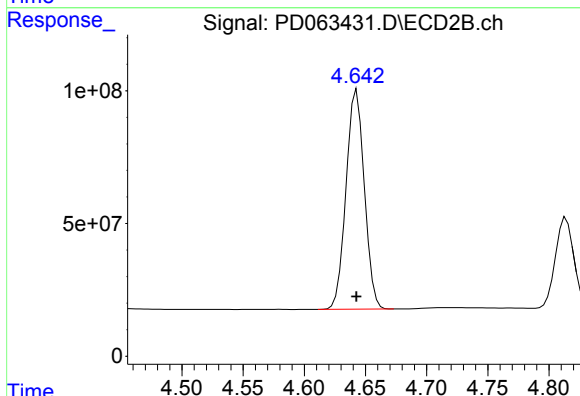
#2 alpha-BHC
 R.T.: 4.359 min
 Delta R.T.: 0.000 min
 Response: 935138298
 Conc: 45.24 ng/ml



#3 gamma-BHC (Lindane)

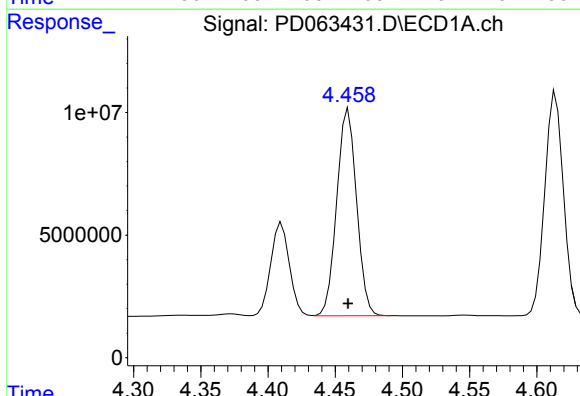
R.T.: 4.159 min
 Delta R.T.: 0.000 min
 Response: 86788827
 Conc: 44.19 ng/ml

Instrument :
 ECD_D
 ClientSampleId :
 PB136813BS



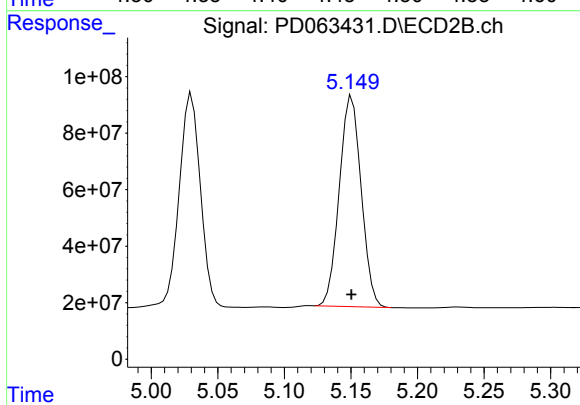
#3 gamma-BHC (Lindane)

R.T.: 4.643 min
 Delta R.T.: 0.000 min
 Response: 859580879
 Conc: 45.32 ng/ml



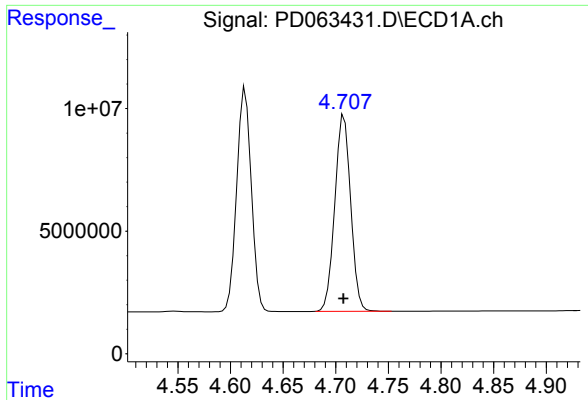
#4 Heptachlor

R.T.: 4.460 min
 Delta R.T.: 0.000 min
 Response: 86218656
 Conc: 44.41 ng/ml



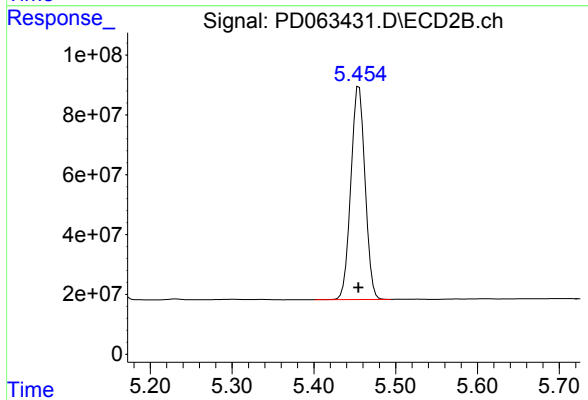
#4 Heptachlor

R.T.: 5.151 min
 Delta R.T.: 0.000 min
 Response: 853355462
 Conc: 44.65 ng/ml

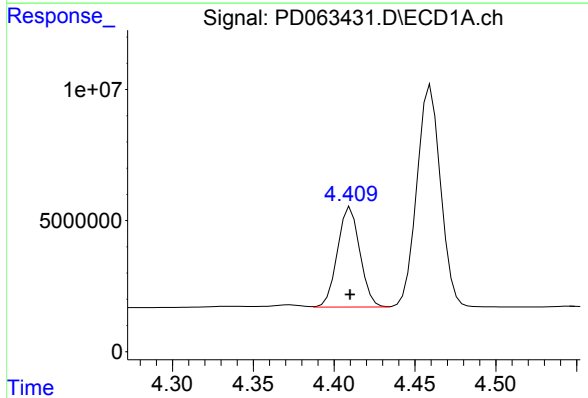


#5 Aldrin
 R.T.: 4.708 min
 Delta R.T.: 0.000 min
 Response: 84038188
 Conc: 44.47 ng/ml

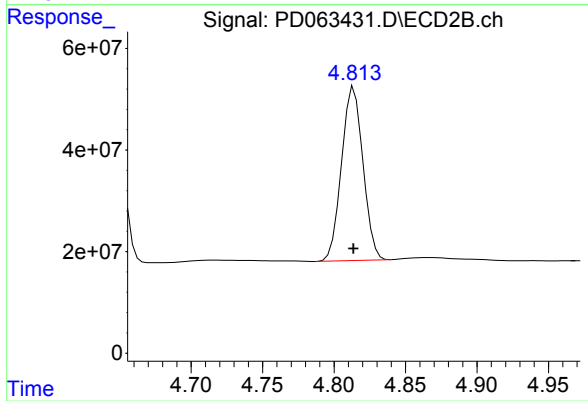
Instrument :
 ECD_D
 ClientSampled :
 PB136813BS



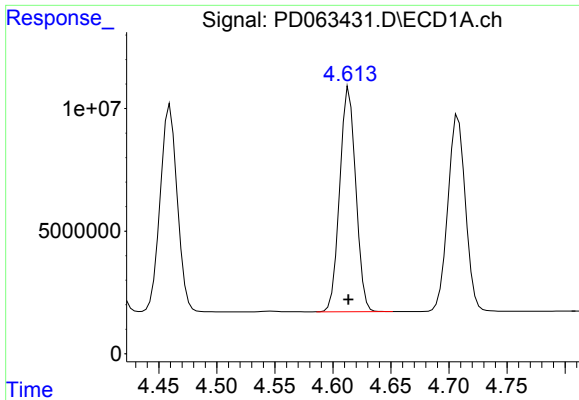
#5 Aldrin
 R.T.: 5.455 min
 Delta R.T.: 0.000 min
 Response: 853266287
 Conc: 43.88 ng/ml



#6 beta-BHC
 R.T.: 4.410 min
 Delta R.T.: 0.000 min
 Response: 36817128
 Conc: 42.32 ng/ml



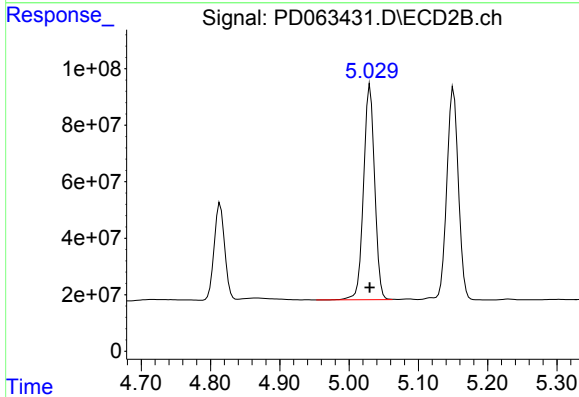
#6 beta-BHC
 R.T.: 4.814 min
 Delta R.T.: 0.000 min
 Response: 356887394
 Conc: 45.33 ng/ml



#7 delta-BHC

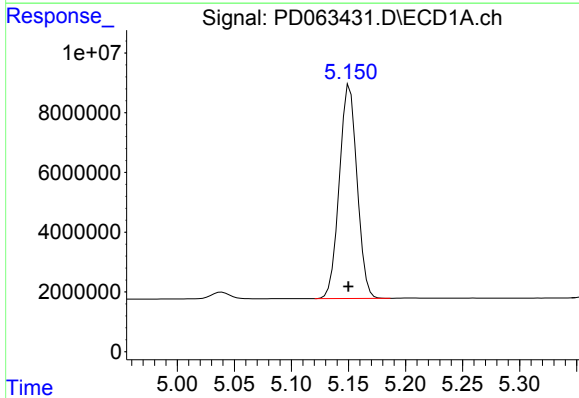
R.T.: 4.614 min
 Delta R.T.: 0.000 min
 Response: 88091237
 Conc: 44.92 ng/ml

Instrument :
 ECD_D
 ClientSampleId :
 PB136813BS



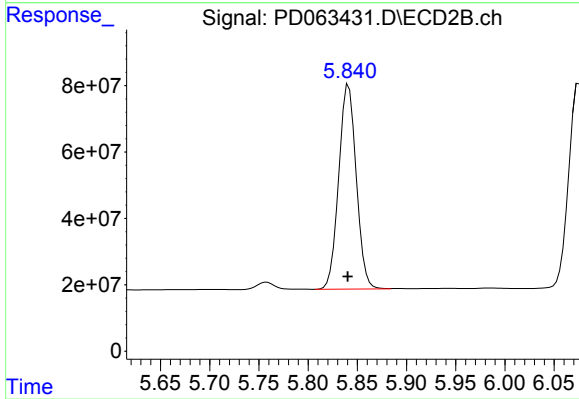
#7 delta-BHC

R.T.: 5.030 min
 Delta R.T.: 0.000 min
 Response: 846998617
 Conc: 44.75 ng/ml



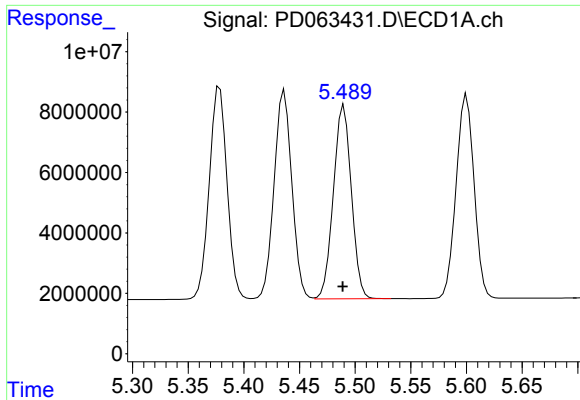
#8 Heptachlor epoxide

R.T.: 5.151 min
 Delta R.T.: 0.001 min
 Response: 77552201
 Conc: 44.26 ng/ml



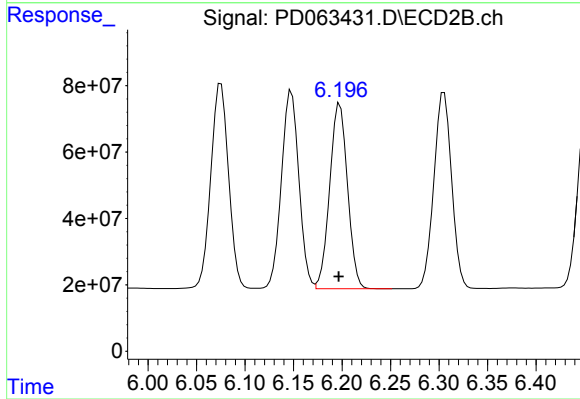
#8 Heptachlor epoxide

R.T.: 5.841 min
 Delta R.T.: 0.001 min
 Response: 764925012
 Conc: 41.84 ng/ml

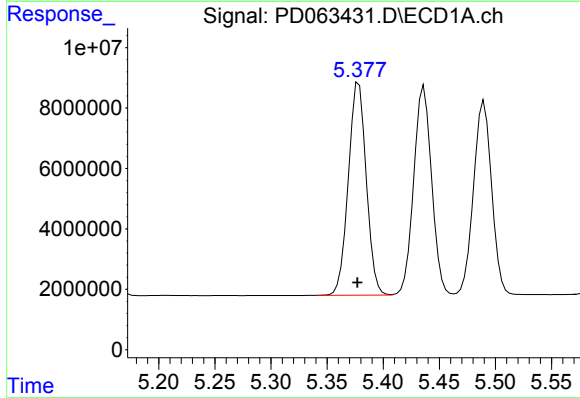


#9 Endosulfan I
 R.T.: 5.490 min
 Delta R.T.: 0.001 min
 Response: 71971946
 Conc: 43.67 ng/ml

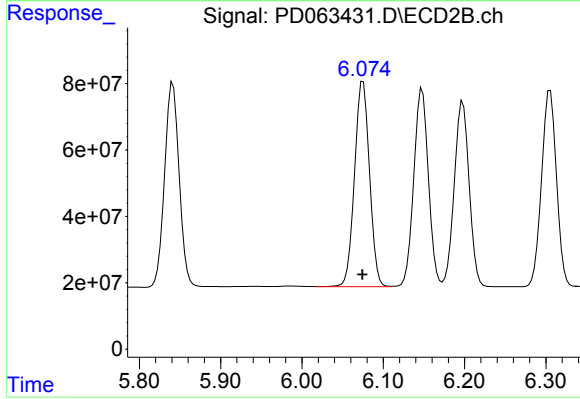
Instrument :
 ECD_D
 ClientSampled :
 PB136813BS



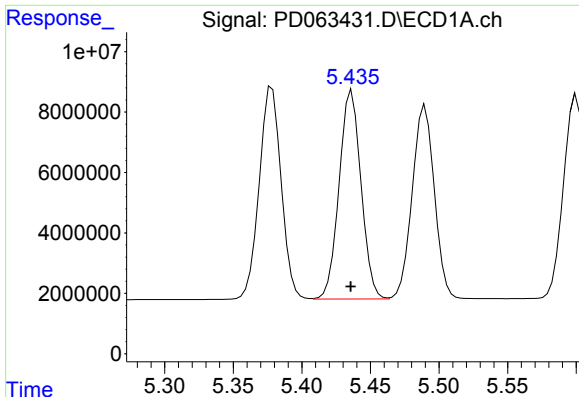
#9 Endosulfan I
 R.T.: 6.198 min
 Delta R.T.: 0.001 min
 Response: 713762797
 Conc: 41.89 ng/ml



#10 gamma-Chlordane
 R.T.: 5.378 min
 Delta R.T.: 0.001 min
 Response: 78308663
 Conc: 43.85 ng/ml



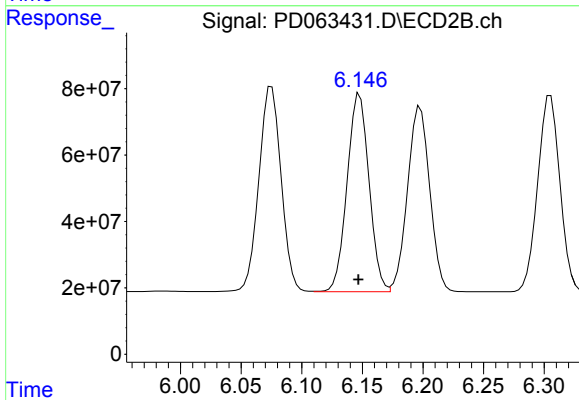
#10 gamma-Chlordane
 R.T.: 6.075 min
 Delta R.T.: 0.000 min
 Response: 790435048
 Conc: 42.55 ng/ml



#11 alpha-Chlordane

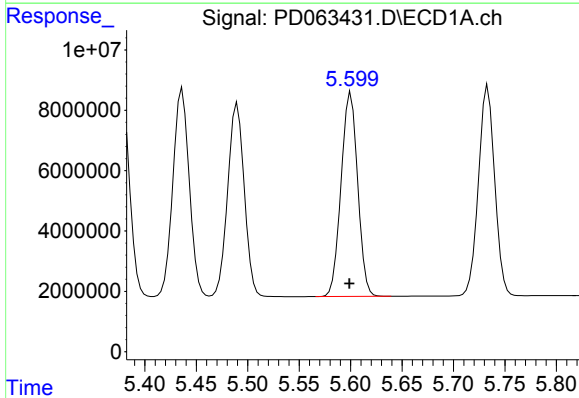
R.T.: 5.436 min
Delta R.T.: 0.000 min
Response: 76853020
Conc: 43.46 ng/ml

Instrument :
ECD_D
ClientSampleId :
PB136813BS



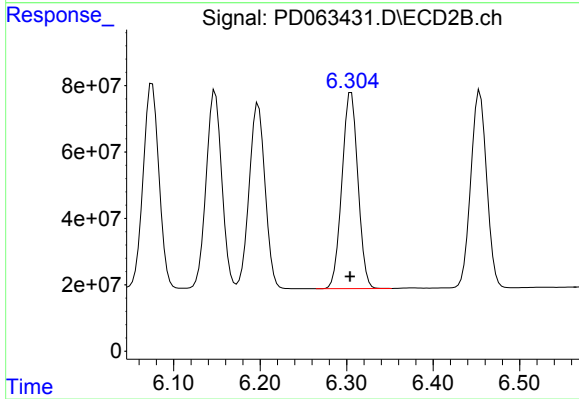
#11 alpha-Chlordane

R.T.: 6.148 min
Delta R.T.: 0.001 min
Response: 751104567
Conc: 42.25 ng/ml



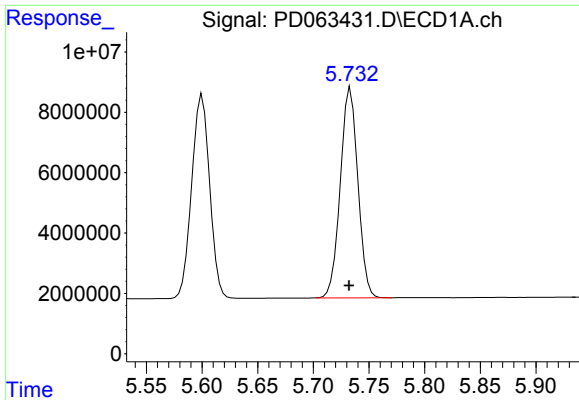
#12 4,4'-DDE

R.T.: 5.600 min
Delta R.T.: 0.001 min
Response: 75835592
Conc: 43.62 ng/ml



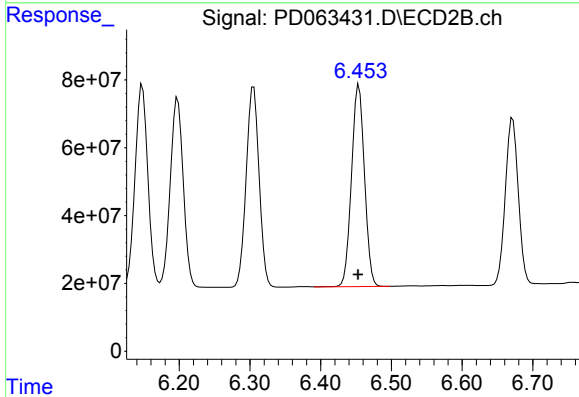
#12 4,4'-DDE

R.T.: 6.305 min
Delta R.T.: 0.001 min
Response: 752550455
Conc: 41.41 ng/ml

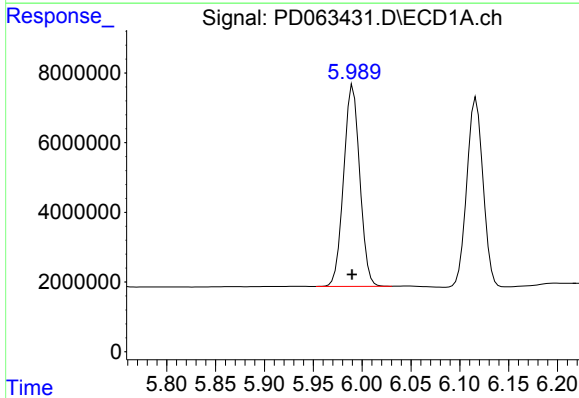


#13 Dieldrin
R.T.: 5.733 min
Delta R.T.: 0.001 min
Response: 76550680
Conc: 43.58 ng/ml

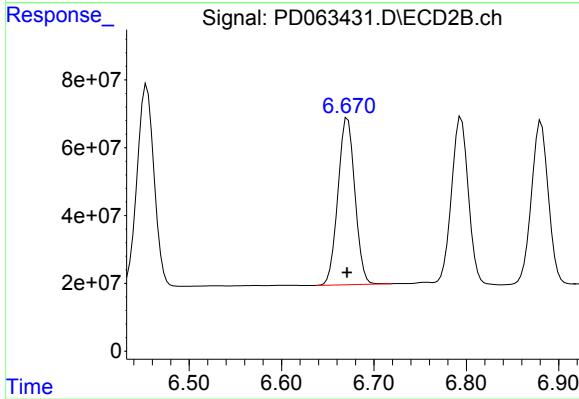
Instrument :
ECD_D
ClientSampled :
PB136813BS



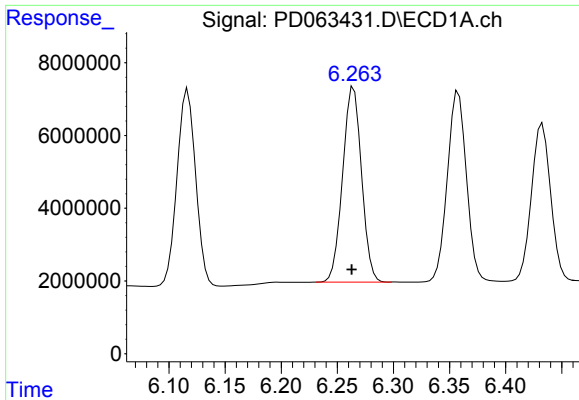
#13 Dieldrin
R.T.: 6.454 min
Delta R.T.: 0.001 min
Response: 759230945
Conc: 41.94 ng/ml



#14 Endrin
R.T.: 5.991 min
Delta R.T.: 0.000 min
Response: 66400958
Conc: 41.75 ng/ml



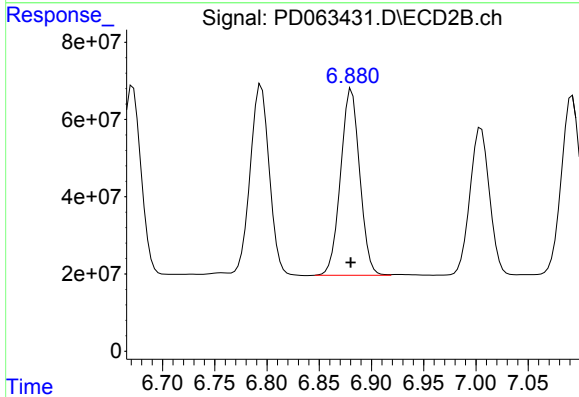
#14 Endrin
R.T.: 6.672 min
Delta R.T.: 0.000 min
Response: 628355543
Conc: 40.88 ng/ml



#15 Endosulfan II

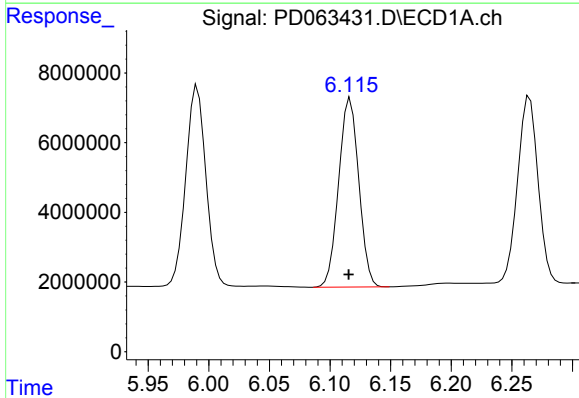
R.T.: 6.265 min
 Delta R.T.: 0.002 min
 Response: 62865179
 Conc: 44.84 ng/ml

Instrument :
 ECD_D
 ClientSampleId :
 PB136813BS



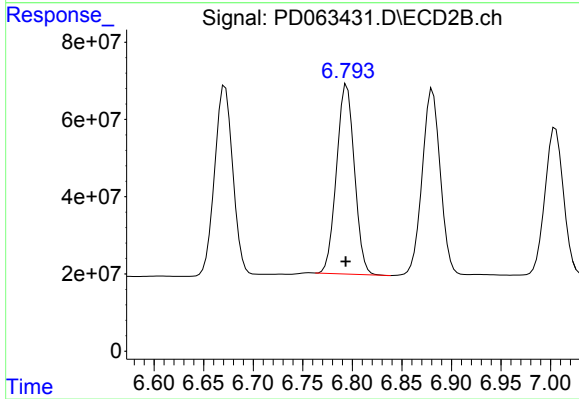
#15 Endosulfan II

R.T.: 6.881 min
 Delta R.T.: 0.000 min
 Response: 614344622
 Conc: 41.66 ng/ml



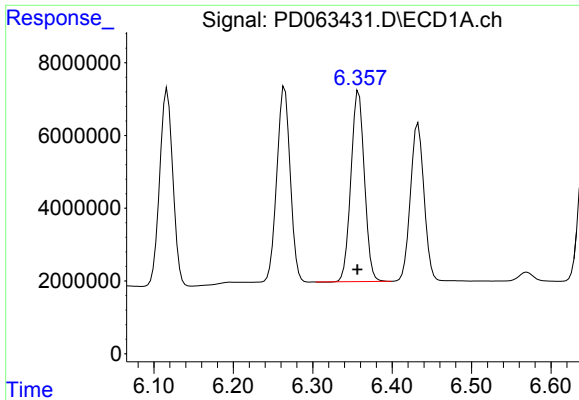
#16 4,4'-DDD

R.T.: 6.117 min
 Delta R.T.: 0.001 min
 Response: 62674627
 Conc: 43.22 ng/ml



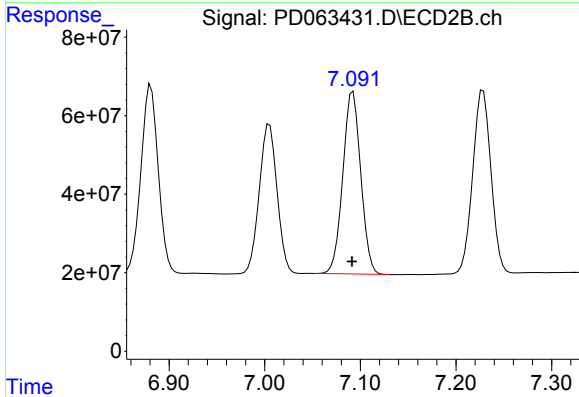
#16 4,4'-DDD

R.T.: 6.794 min
 Delta R.T.: 0.001 min
 Response: 618003240
 Conc: 41.54 ng/ml

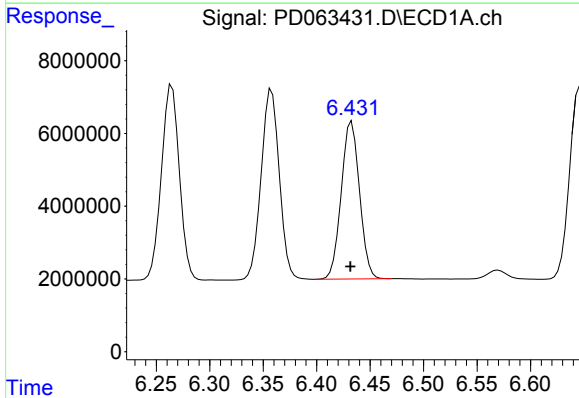


#17 4,4'-DDT
 R.T.: 6.358 min
 Delta R.T.: 0.002 min
 Response: 61828888
 Conc: 42.80 ng/ml

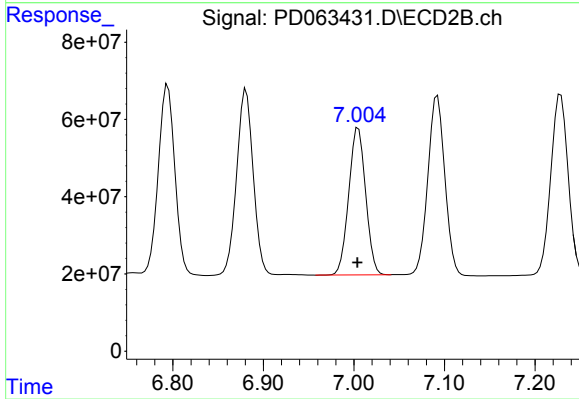
Instrument :
 ECD_D
ClientSampled :
 PB136813BS



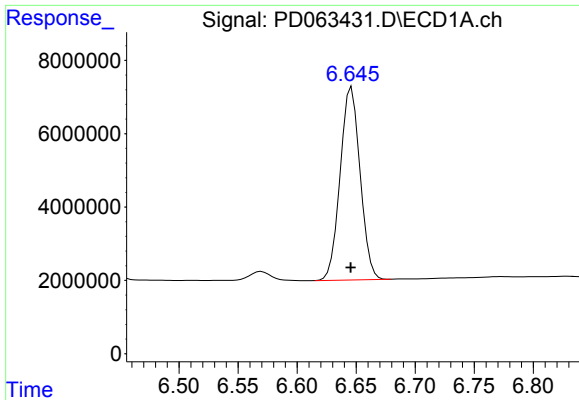
#17 4,4'-DDT
 R.T.: 7.092 min
 Delta R.T.: 0.000 min
 Response: 606867883
 Conc: 40.32 ng/ml



#18 Endrin aldehyde
 R.T.: 6.433 min
 Delta R.T.: 0.001 min
 Response: 51591805
 Conc: 43.36 ng/ml



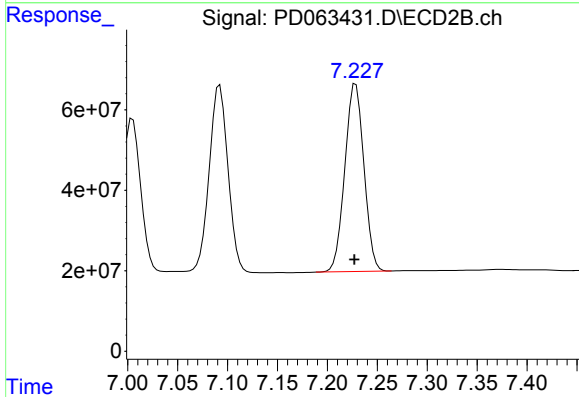
#18 Endrin aldehyde
 R.T.: 7.005 min
 Delta R.T.: 0.001 min
 Response: 494574197
 Conc: 40.82 ng/ml



#19 Endosulfan Sulfate

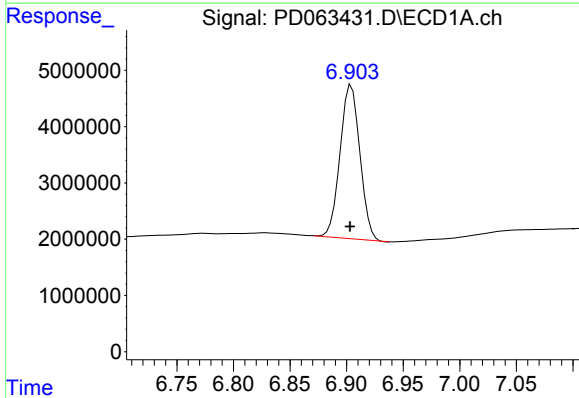
R.T.: 6.646 min
 Delta R.T.: 0.000 min
 Response: 61842913
 Conc: 48.39 ng/ml

Instrument :
 ECD_D
 ClientSampleId :
 PB136813BS



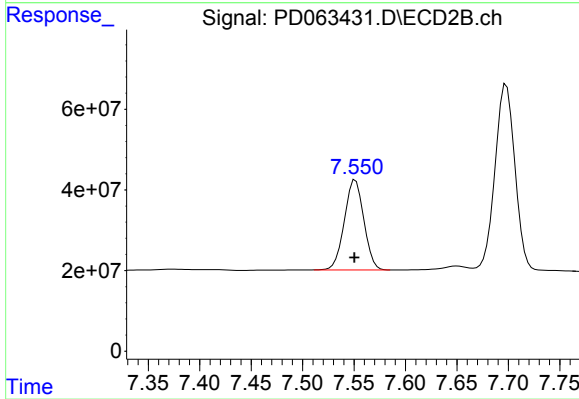
#19 Endosulfan Sulfate

R.T.: 7.228 min
 Delta R.T.: 0.001 min
 Response: 620707297
 Conc: 40.93 ng/ml



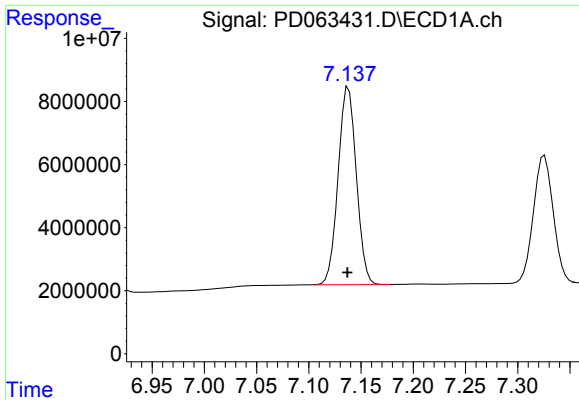
#20 Methoxychlor

R.T.: 6.904 min
 Delta R.T.: 0.001 min
 Response: 33379905
 Conc: 41.85 ng/ml



#20 Methoxychlor

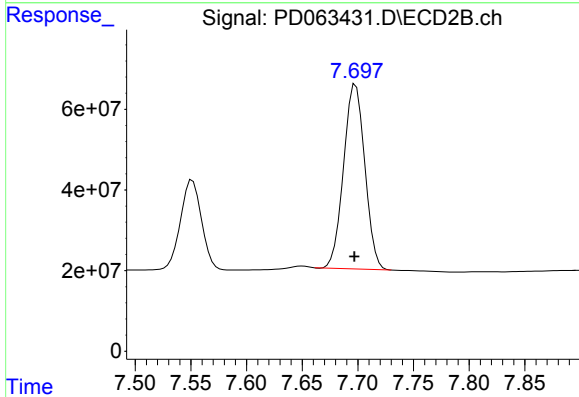
R.T.: 7.551 min
 Delta R.T.: 0.001 min
 Response: 294540520
 Conc: 39.77 ng/ml



#21 Endrin ketone

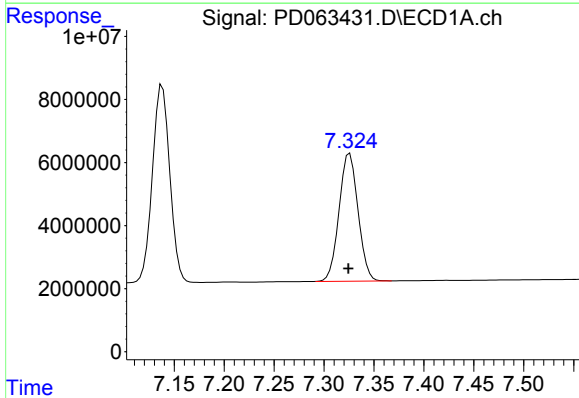
R.T.: 7.138 min
Delta R.T.: 0.001 min
Response: 76024566
Conc: 42.85 ng/ml

Instrument :
ECD_D
ClientSampleId :
PB136813BS



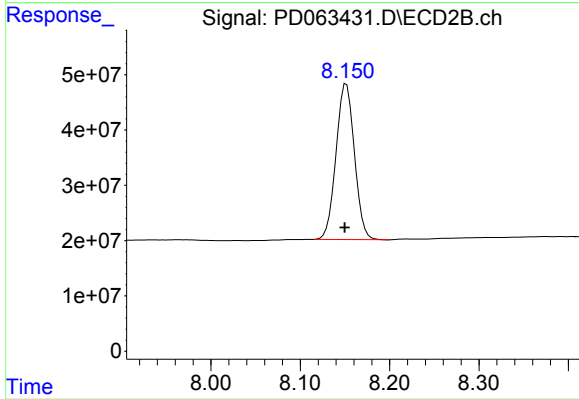
#21 Endrin ketone

R.T.: 7.698 min
Delta R.T.: 0.001 min
Response: 608550705
Conc: 41.62 ng/ml



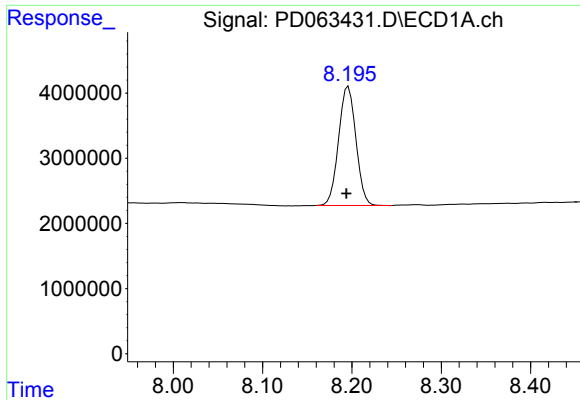
#22 Mirex

R.T.: 7.326 min
Delta R.T.: 0.001 min
Response: 53583172
Conc: 46.68 ng/ml



#22 Mirex

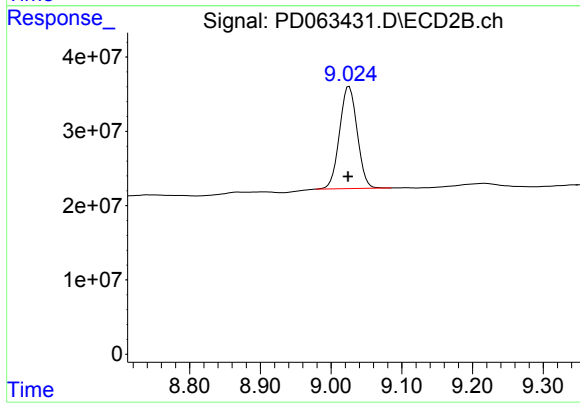
R.T.: 8.152 min
Delta R.T.: 0.002 min
Response: 402510375
Conc: 40.25 ng/ml



#28 Decachlorobiphenyl

R.T.: 8.196 min
Delta R.T.: 0.002 min
Response: 24591241
Conc: 15.64 ng/ml

Instrument :
ECD_D
ClientSampleId :
PB136813BS



#28 Decachlorobiphenyl

R.T.: 9.025 min
Delta R.T.: 0.002 min
Response: 238585094
Conc: 17.27 ng/ml