

Data Path : Z:\pestpcbsrv\HPCHEM1\ECD_D\Data\PD060421\
 Data File : PD063439.D
 Signal(s) : Signal #1: ECD1A.ch Signal #2: ECD2B.ch
 Acq On : 03 Jun 2021 20:06
 Operator : AR\AJ
 Sample : PEM
 Misc :
 ALS Vial : 3 Sample Multiplier: 1

Instrument :
 ECD_D
ClientSampled :
 PEM

Manual Integrations
APPROVED
 Ankita
 6/4/2021 11:26:12 AM

Integration File signal 1: autoint1.e
 Integration File signal 2: autoint2.e
 Quant Time: Jun 04 02:32:26 2021
 Quant Method : Z:\pestpcbsrv\HPCHEM1\ECD_D\Method\PD060221.M
 Quant Title : GC Extractables
 QLast Update : Thu Jun 03 01:33:41 2021
 Response via : Initial Calibration
 Integrator: ChemStation

Volume Inj. : 2 µl
 Signal #1 Phase : ZB-MR2 Signal #2 Phase: ZB-MR1
 Signal #1 Info : 30M x 0.32mm x0.2 Signal #2 Info : 30M x 0.32mm x 0.50µm

Compound	RT#1	RT#2	Resp#1	Resp#2	ng/ml	ng/ml

System Monitoring Compounds						
1) SA Tetrachlo...	3.439	3.971	27576292	274.7E6	19.929	20.505
28) SA Decachlor...	8.194	9.026	30653753	288.6E6	19.491	20.882
Target Compounds						
2) A alpha-BHC	3.875	4.359	20745013	217.1E6	9.922	10.504
3) MA gamma-BHC...	4.158	4.643	20209174	206.7E6	10.290	10.900
6) B beta-BHC	4.410	4.814	10003671	88167290	11.499	11.198
12) B 4,4'-DDE	5.598	6.301	315726	1854895	0.182m	0.102m#
14) MA Endrin	5.989	6.671	83309402	769.5E6	52.381	50.066
16) A 4,4'-DDD	6.115	6.793	1147481	13921344	0.791m	0.936m
17) MA 4,4'-DDT	6.356	7.092	158.6E6	1417.9E6	109.748	94.199
18) B Endrin al...	6.428	7.004	834002	8260934	0.701m	0.682
20) A Methoxychlor	6.903	7.551	202.6E6	1661.7E6	254.025	224.348
21) B Endrin ke...	7.136	7.697	2687031	19833940	1.515	1.356m

(f)=RT Delta > 1/2 Window (#)=Amounts differ by > 25% (m)=manual int.

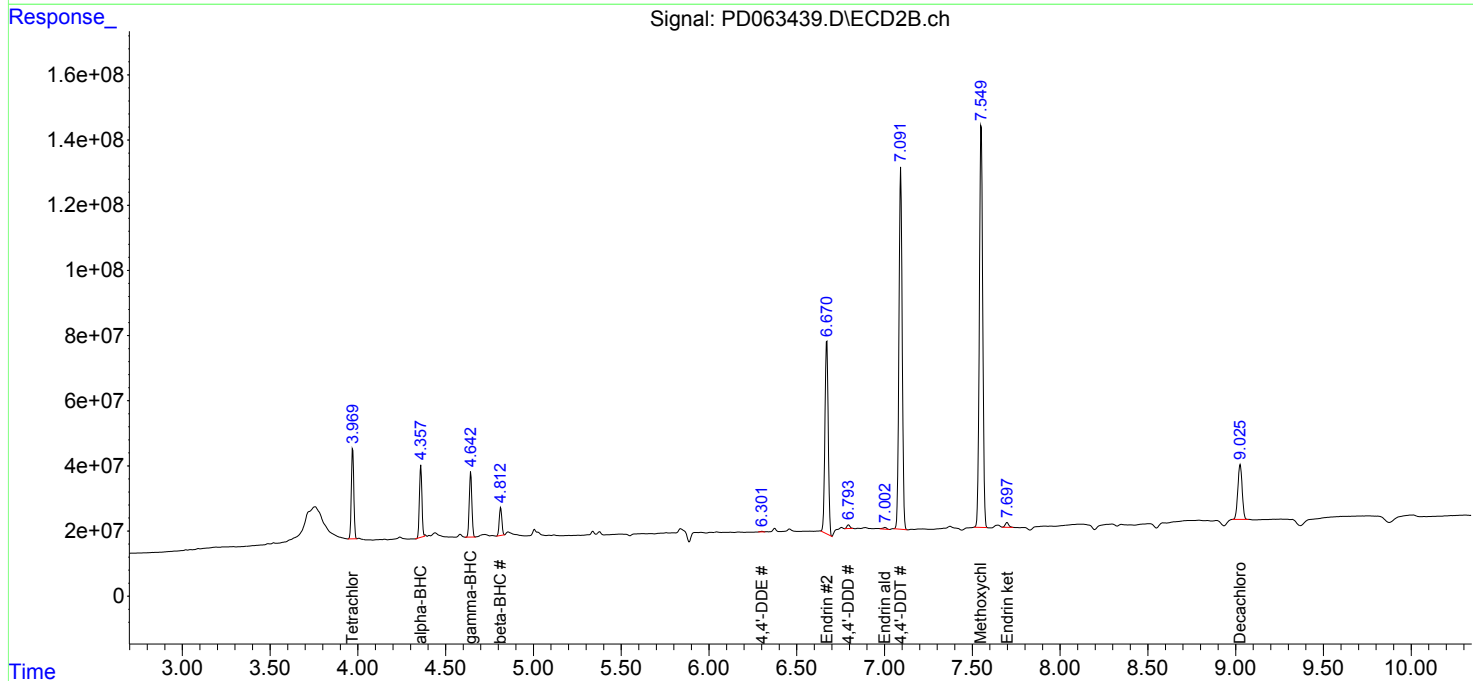
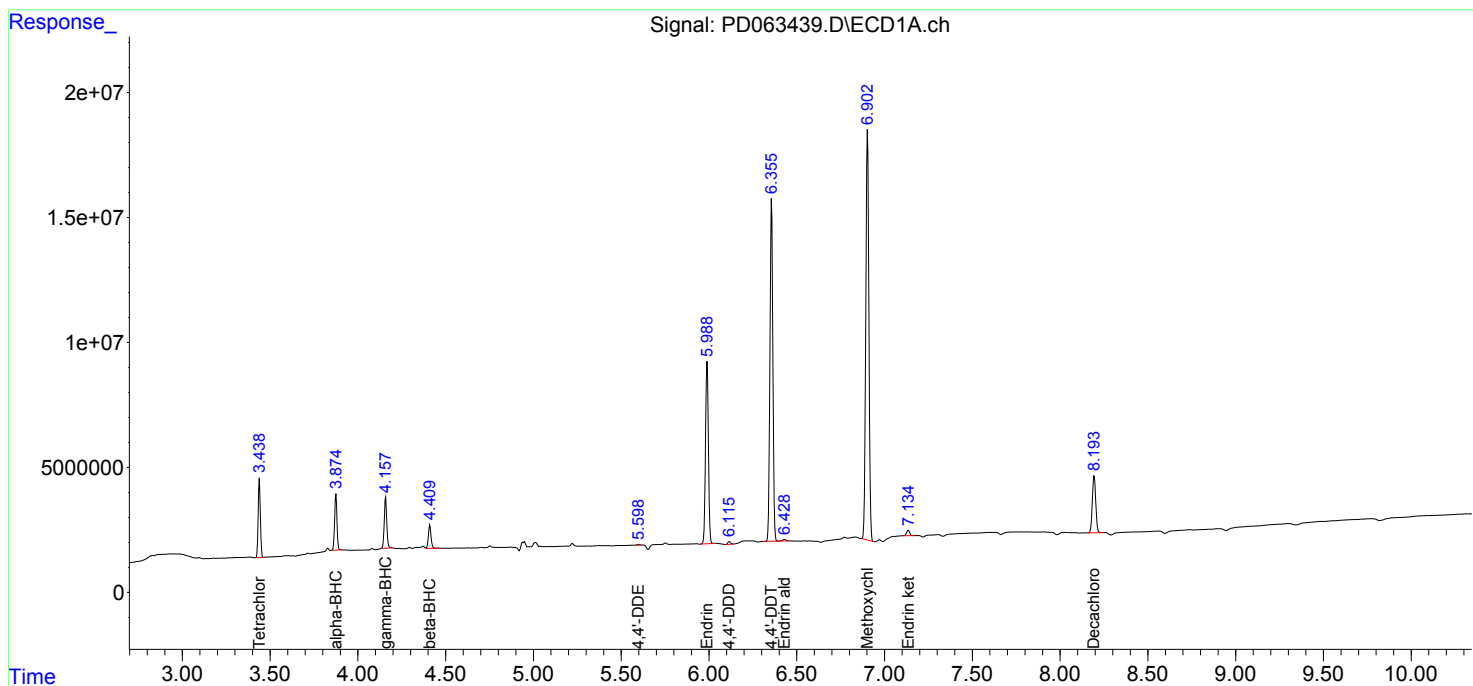
Data Path : Z:\pestpcbsrv\HPCHEM1\ECD_D\Data\PD060421\
 Data File : PD063439.D
 Signal(s) : Signal #1: ECD1A.ch Signal #2: ECD2B.ch
 Acq On : 03 Jun 2021 20:06
 Operator : AR\AJ
 Sample : PEM
 Misc :
 ALS Vial : 3 Sample Multiplier: 1

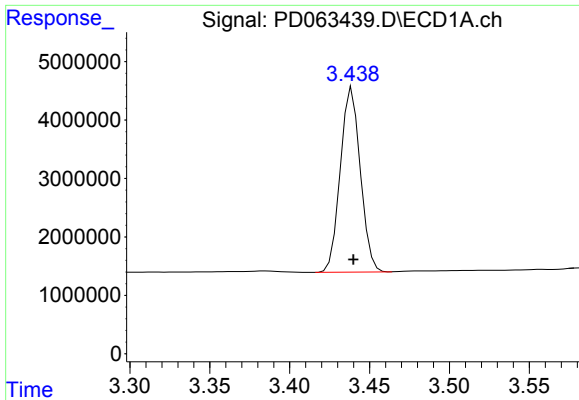
Instrument :
 ECD_D
 ClientSampled :
 PEM

Manual Integrations
APPROVED
 Ankita
 6/4/2021 11:26:12 AM

Integration File signal 1: autoint1.e
 Integration File signal 2: autoint2.e
 Quant Time: Jun 04 02:32:26 2021
 Quant Method : Z:\pestpcbsrv\HPCHEM1\ECD_D\Method\PD060221.M
 Quant Title : GC Extractables
 QLast Update : Thu Jun 03 01:33:41 2021
 Response via : Initial Calibration
 Integrator: ChemStation

Volume Inj. : 2 µl
 Signal #1 Phase : ZB-MR2 Signal #2 Phase: ZB-MR1
 Signal #1 Info : 30M x 0.32mm x0.2 Signal #2 Info : 30M x 0.32mm x 0.50µm

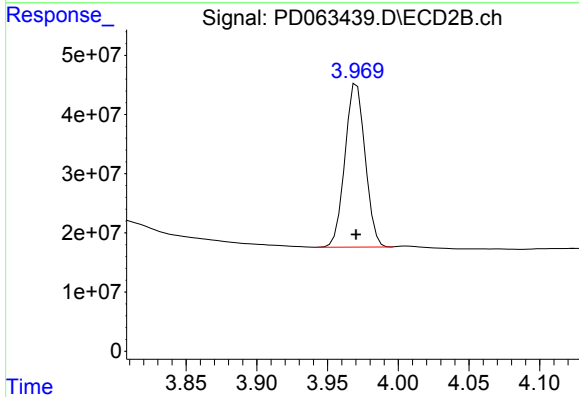




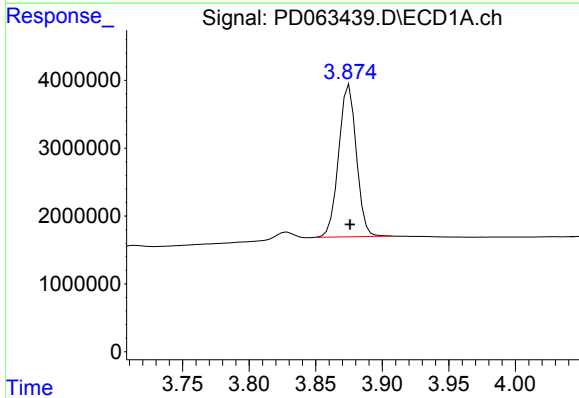
#1 Tetrachloro-m-xylene
 R.T.: 3.439 min
 Delta R.T.: 0.000 min
 Response: 27576292
 Conc: 19.93 ng/ml

Instrument :
 ECD_D
 ClientSampled :
 PEM

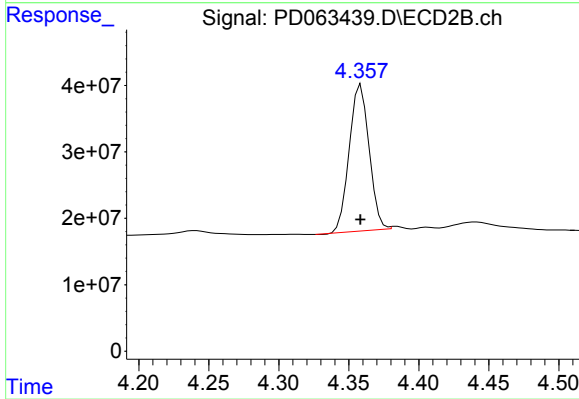
Manual Integrations
 APPROVED
 Ankita
 6/4/2021 11:26:12 AM



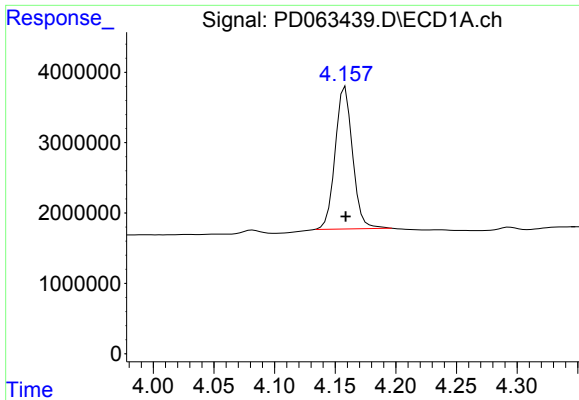
#1 Tetrachloro-m-xylene
 R.T.: 3.971 min
 Delta R.T.: 0.000 min
 Response: 274736131
 Conc: 20.50 ng/ml



#2 alpha-BHC
 R.T.: 3.875 min
 Delta R.T.: 0.000 min
 Response: 20745013
 Conc: 9.92 ng/ml



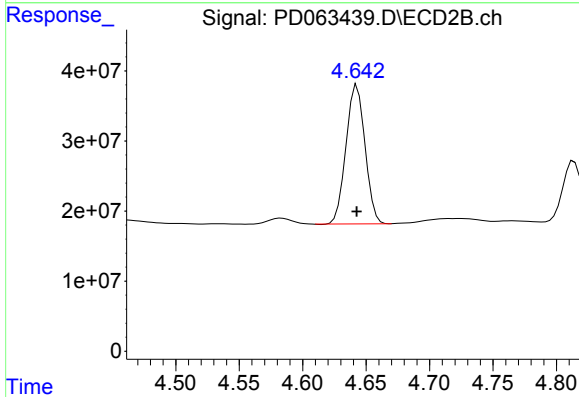
#2 alpha-BHC
 R.T.: 4.359 min
 Delta R.T.: 0.000 min
 Response: 217117993
 Conc: 10.50 ng/ml



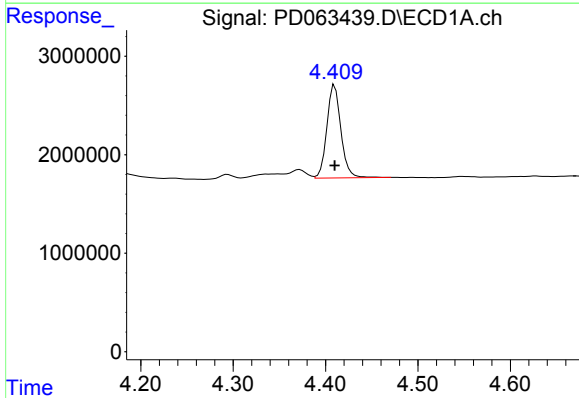
#3 gamma-BHC (Lindane)
 R.T.: 4.158 min
 Delta R.T.: 0.000 min
 Response: 20209174
 Conc: 10.29 ng/ml

Instrument :
 ECD_D
 ClientSampled :
 PEM

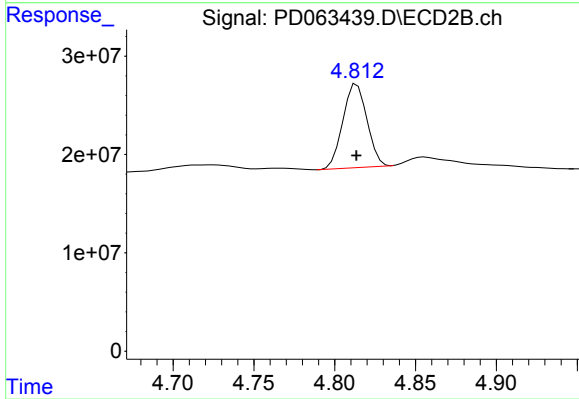
Manual Integrations
 APPROVED
 Ankita
 6/4/2021 11:26:12 AM



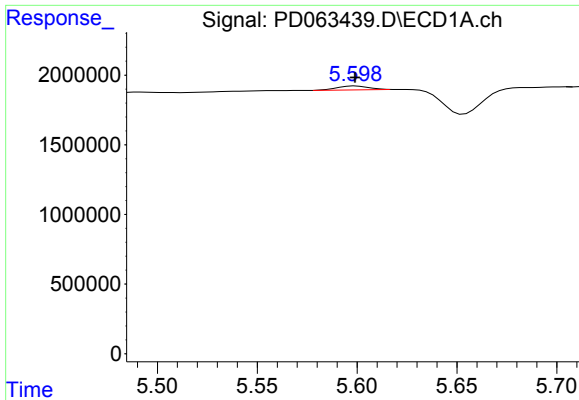
#3 gamma-BHC (Lindane)
 R.T.: 4.643 min
 Delta R.T.: 0.000 min
 Response: 206740630
 Conc: 10.90 ng/ml



#6 beta-BHC
 R.T.: 4.410 min
 Delta R.T.: 0.000 min
 Response: 10003671
 Conc: 11.50 ng/ml



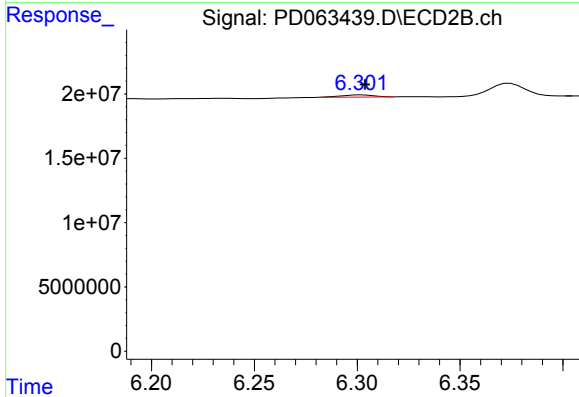
#6 beta-BHC
 R.T.: 4.814 min
 Delta R.T.: 0.000 min
 Response: 88167290
 Conc: 11.20 ng/ml



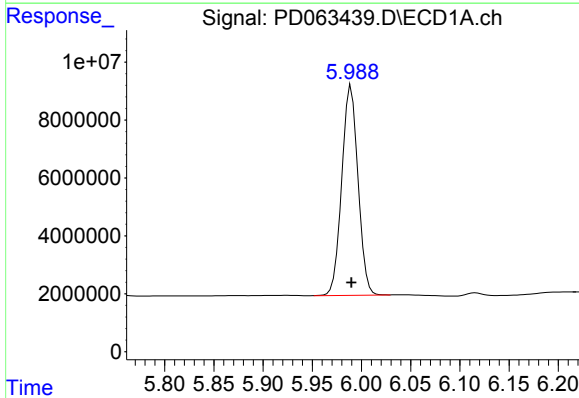
#12 4,4'-DDE
 R.T.: 5.598 min
 Delta R.T.: -0.001 min
 Response: 315726
 Conc: 0.18 ng/ml m

Instrument :
 ECD_D
ClientSampled :
 PEM

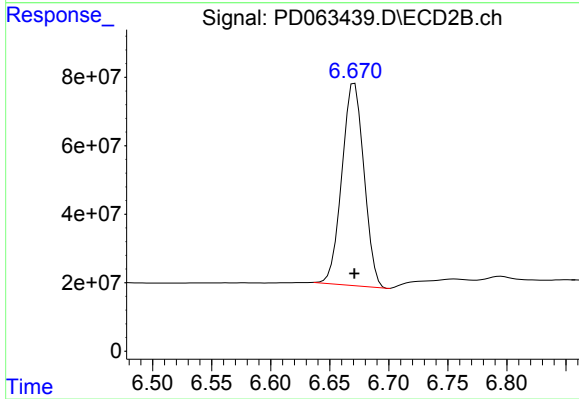
Manual Integrations
APPROVED
 Ankita
 6/4/2021 11:26:12 AM



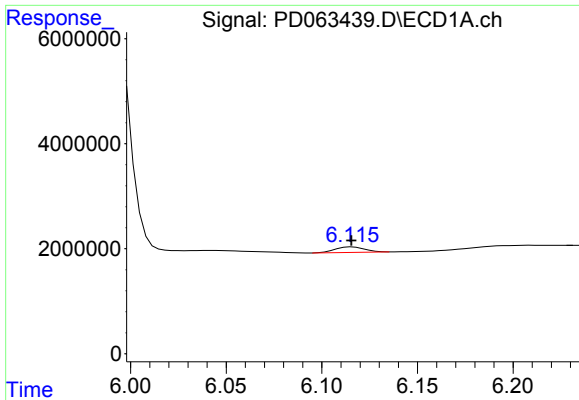
#12 4,4'-DDE
 R.T.: 6.301 min
 Delta R.T.: -0.003 min
 Response: 1854895
 Conc: 0.10 ng/ml m



#14 Endrin
 R.T.: 5.989 min
 Delta R.T.: 0.000 min
 Response: 83309402
 Conc: 52.38 ng/ml



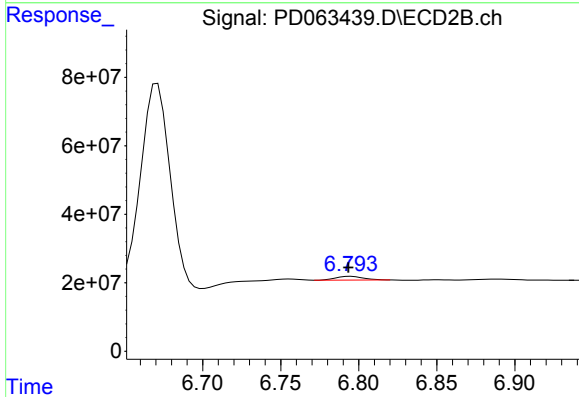
#14 Endrin
 R.T.: 6.671 min
 Delta R.T.: 0.000 min
 Response: 769542508
 Conc: 50.07 ng/ml



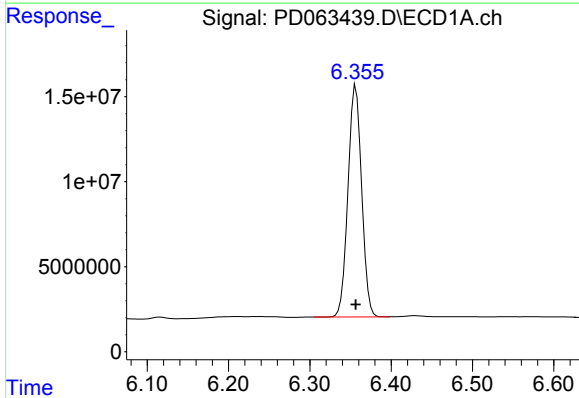
#16 4,4'-DDD
 R.T.: 6.115 min
 Delta R.T.: 0.000 min
 Response: 1147481
 Conc: 0.79 ng/ml m

Instrument :
 ECD_D
 ClientSampled :
 PEM

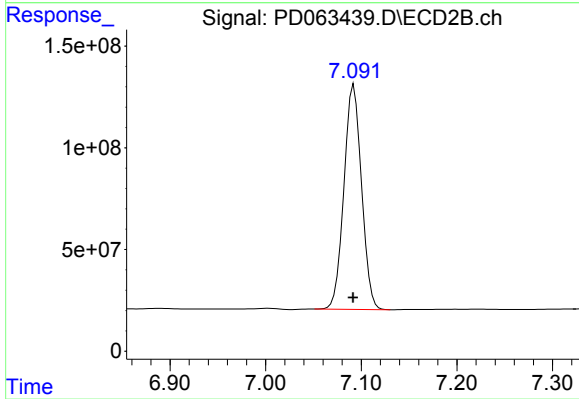
Manual Integrations
 APPROVED
 Ankita
 6/4/2021 11:26:12 AM



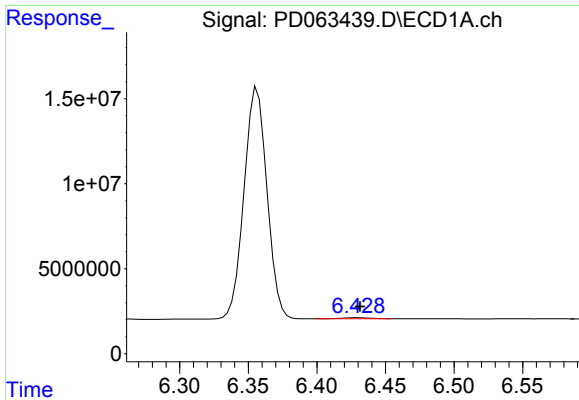
#16 4,4'-DDD
 R.T.: 6.793 min
 Delta R.T.: 0.000 min
 Response: 13921344
 Conc: 0.94 ng/ml m



#17 4,4'-DDT
 R.T.: 6.356 min
 Delta R.T.: 0.000 min
 Response: 158554534
 Conc: 109.75 ng/ml



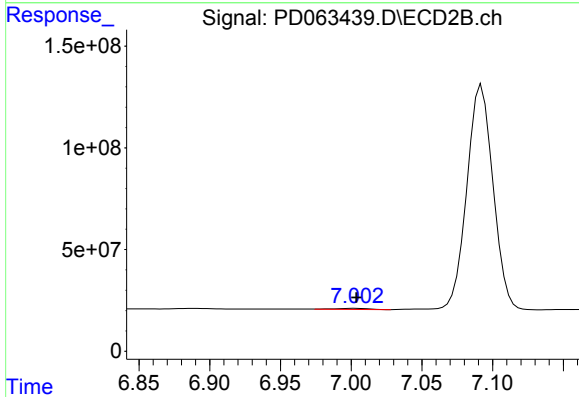
#17 4,4'-DDT
 R.T.: 7.092 min
 Delta R.T.: 0.000 min
 Response: 1417887357
 Conc: 94.20 ng/ml



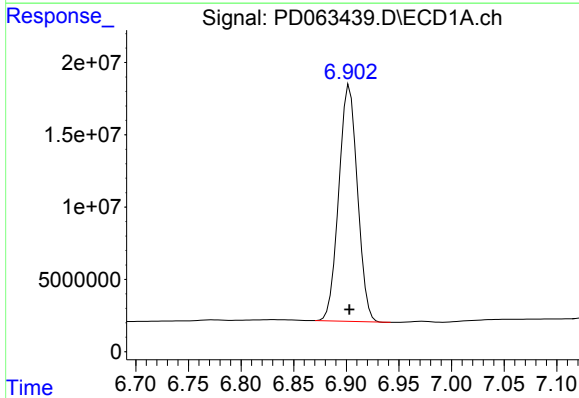
#18 Endrin aldehyde
 R.T.: 6.428 min
 Delta R.T.: -0.003 min
 Response: 834002
 Conc: 0.70 ng/ml m

Instrument :
 ECD_D
 ClientSampled :
 PEM

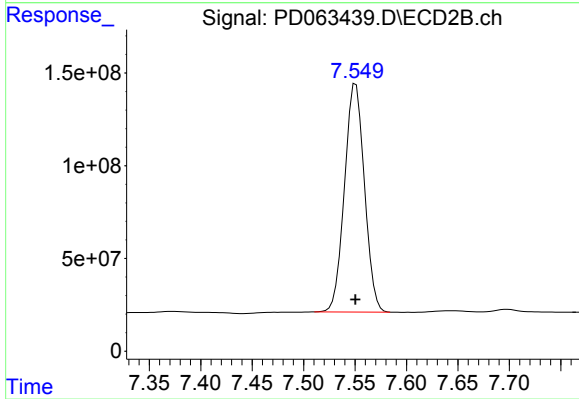
Manual Integrations
 APPROVED
 Ankita
 6/4/2021 11:26:12 AM



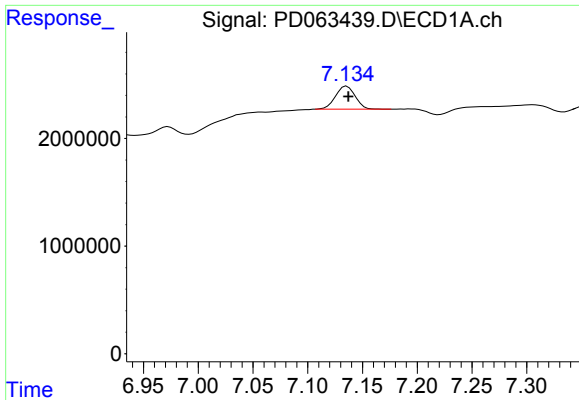
#18 Endrin aldehyde
 R.T.: 7.004 min
 Delta R.T.: 0.000 min
 Response: 8260934
 Conc: 0.68 ng/ml



#20 Methoxychlor
 R.T.: 6.903 min
 Delta R.T.: 0.000 min
 Response: 202601562
 Conc: 254.02 ng/ml



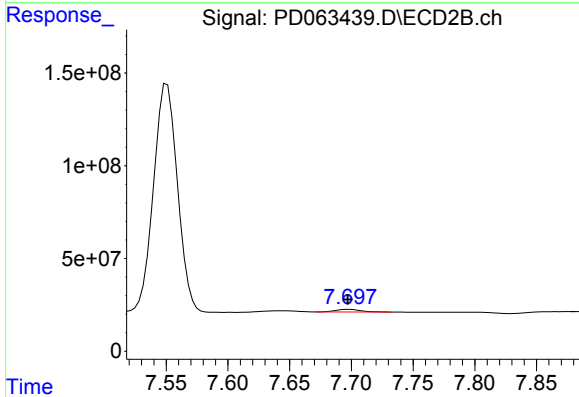
#20 Methoxychlor
 R.T.: 7.551 min
 Delta R.T.: 0.000 min
 Response: 1661672865
 Conc: 224.35 ng/ml



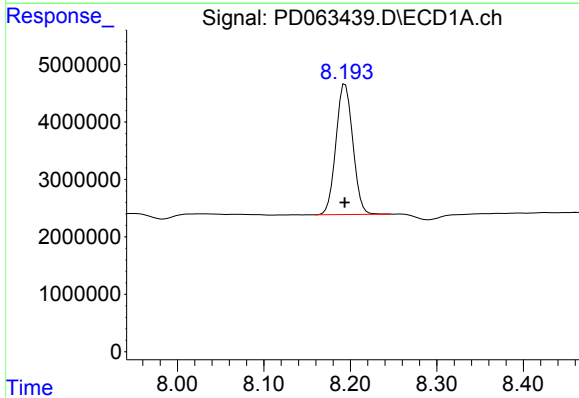
#21 Endrin ketone
 R.T.: 7.136 min
 Delta R.T.: -0.001 min
 Response: 2687031
 Conc: 1.51 ng/ml

Instrument :
 ECD_D
 ClientSampled :
 PEM

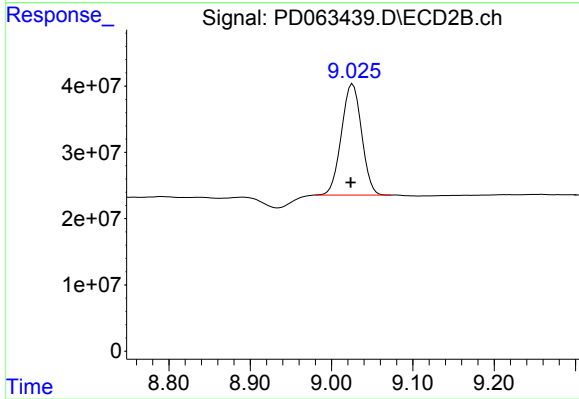
Manual Integrations
APPROVED
 Ankita
 6/4/2021 11:26:12 AM



#21 Endrin ketone
 R.T.: 7.697 min
 Delta R.T.: 0.000 min
 Response: 19833940
 Conc: 1.36 ng/ml m



#28 Decachlorobiphenyl
 R.T.: 8.194 min
 Delta R.T.: 0.000 min
 Response: 30653753
 Conc: 19.49 ng/ml



#28 Decachlorobiphenyl
 R.T.: 9.026 min
 Delta R.T.: 0.002 min
 Response: 288552315
 Conc: 20.88 ng/ml