

Data Path : Z:\pestpcbsrv\HPCHEM1\ECD\_D\Data\PD060421\  
 Data File : PD063442.D  
 Signal(s) : Signal #1: ECD1A.ch Signal #2: ECD2B.ch  
 Acq On : 03 Jun 2021 21:02  
 Operator : AR\AJ  
 Sample : M2580-22  
 Misc :  
 ALS Vial : 35 Sample Multiplier: 1

Instrument :  
 ECD\_D  
 ClientSampleId :  
 18-B2(2-4)

Integration File signal 1: autoint1.e  
 Integration File signal 2: autoint2.e  
 Quant Time: Jun 04 02:33:49 2021  
 Quant Method : Z:\pestpcbsrv\HPCHEM1\ECD\_D\Method\PD060221.M  
 Quant Title : GC Extractables  
 QLast Update : Thu Jun 03 01:33:41 2021  
 Response via : Initial Calibration  
 Integrator: ChemStation

Volume Inj. : 2 µl  
 Signal #1 Phase : ZB-MR2 Signal #2 Phase: ZB-MR1  
 Signal #1 Info : 30M x 0.32mm x0.2 Signal #2 Info : 30M x 0.32mm x 0.50µm

Compound	RT#1	RT#2	Resp#1	Resp#2	ng/ml	ng/ml
-----						
System Monitoring Compounds						
1) SA Tetrachlo...	3.440	3.971	30449092	298.3E6	22.005	22.264
28) SA Decachlor...	8.196	9.026	31817049	304.6E6	20.231	22.040

Target Compounds

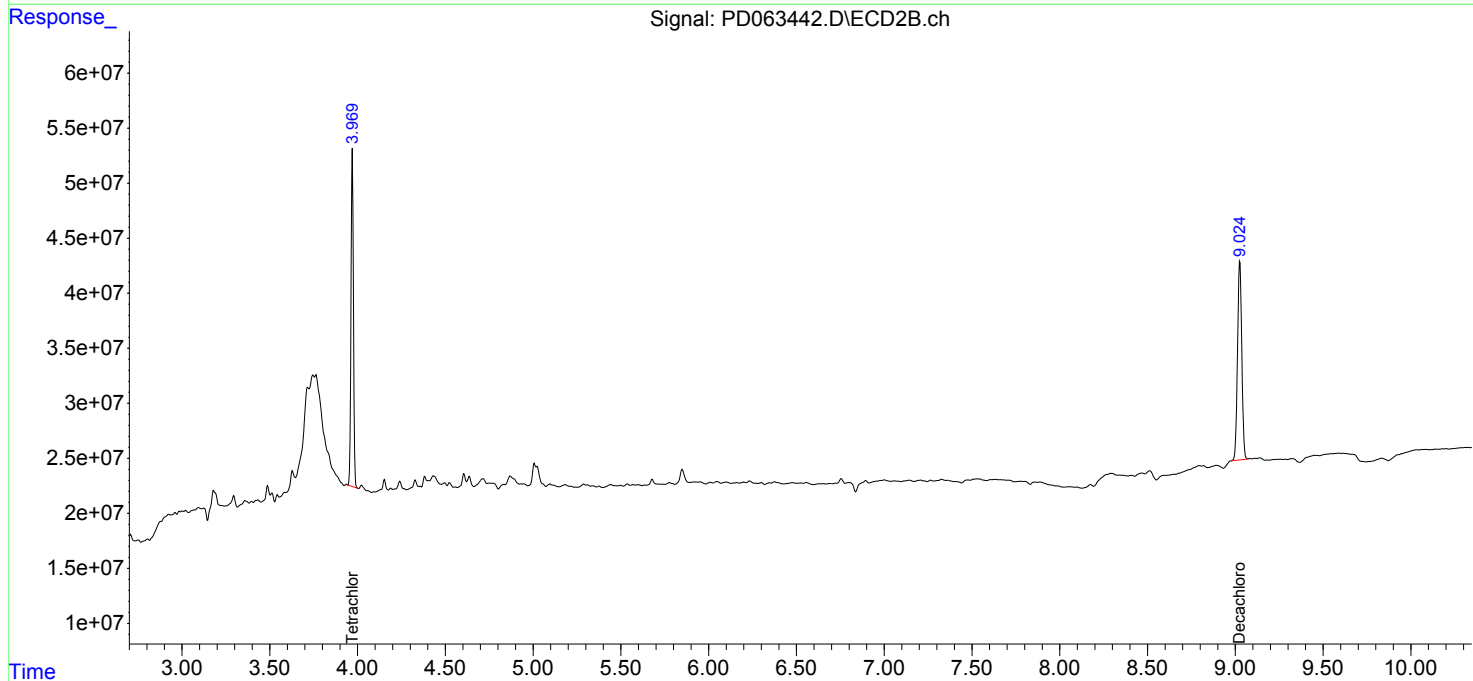
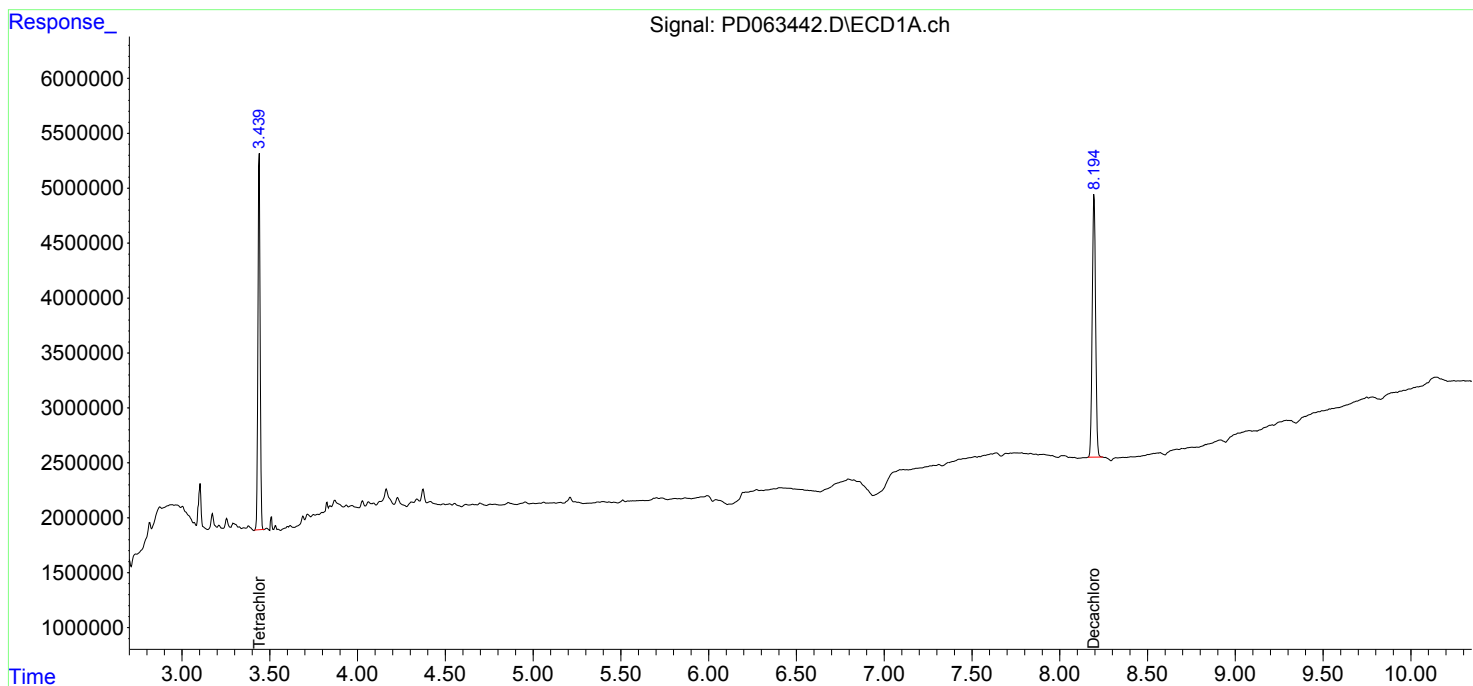
(f)=RT Delta > 1/2 Window (#)=Amounts differ by > 25% (m)=manual int.

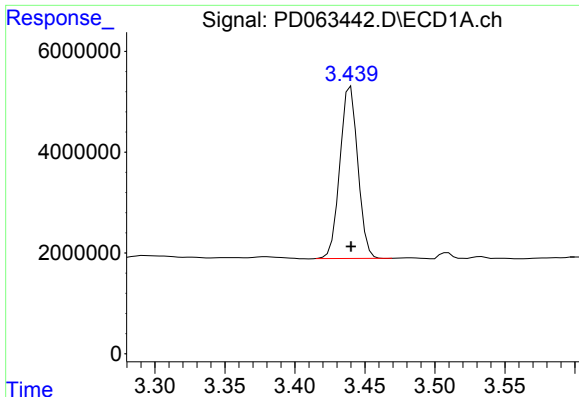
Data Path : Z:\pestpcbsrv\HPCHEM1\ECD\_D\Data\PD060421\  
 Data File : PD063442.D  
 Signal(s) : Signal #1: ECD1A.ch Signal #2: ECD2B.ch  
 Acq On : 03 Jun 2021 21:02  
 Operator : AR\AJ  
 Sample : M2580-22  
 Misc :  
 ALS Vial : 35 Sample Multiplier: 1

Instrument :  
 ECD\_D  
 ClientSampleId :  
 18-B2(2-4)

Integration File signal 1: autoint1.e  
 Integration File signal 2: autoint2.e  
 Quant Time: Jun 04 02:33:49 2021  
 Quant Method : Z:\pestpcbsrv\HPCHEM1\ECD\_D\Method\PD060221.M  
 Quant Title : GC Extractables  
 QLast Update : Thu Jun 03 01:33:41 2021  
 Response via : Initial Calibration  
 Integrator: ChemStation

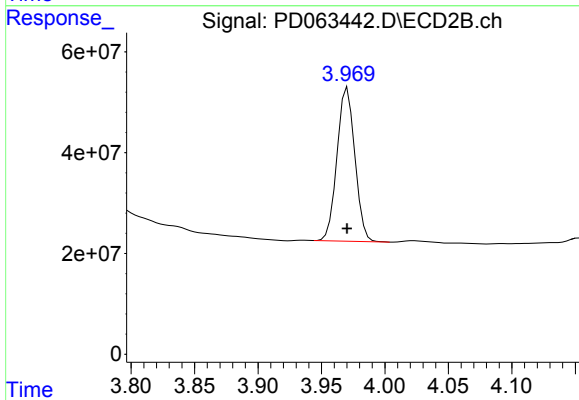
Volume Inj. : 2 µl  
 Signal #1 Phase : ZB-MR2 Signal #2 Phase: ZB-MR1  
 Signal #1 Info : 30M x 0.32mm x0.2 Signal #2 Info : 30M x 0.32mm x 0.50µm



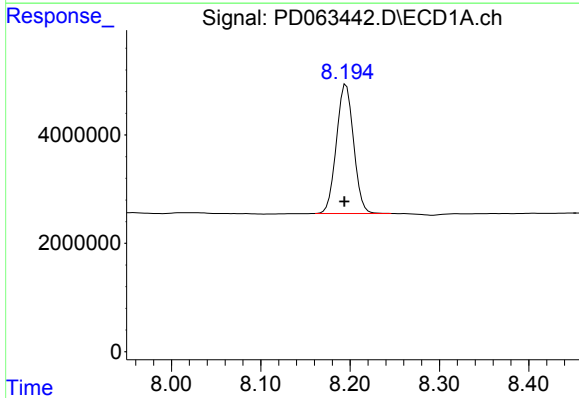


#1 Tetrachloro-m-xylene  
 R.T.: 3.440 min  
 Delta R.T.: 0.000 min  
 Response: 30449092  
 Conc: 22.00 ng/ml

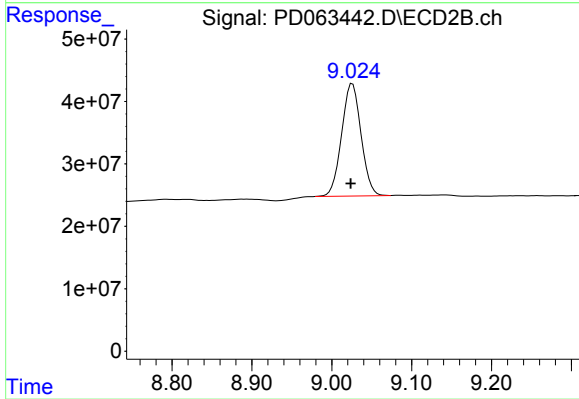
Instrument :  
 ECD\_D  
 ClientSampleId :  
 18-B2(2-4)



#1 Tetrachloro-m-xylene  
 R.T.: 3.971 min  
 Delta R.T.: 0.000 min  
 Response: 298309298  
 Conc: 22.26 ng/ml



#28 Decachlorobiphenyl  
 R.T.: 8.196 min  
 Delta R.T.: 0.002 min  
 Response: 31817049  
 Conc: 20.23 ng/ml



#28 Decachlorobiphenyl  
 R.T.: 9.026 min  
 Delta R.T.: 0.002 min  
 Response: 304563725  
 Conc: 22.04 ng/ml