

Data Path : Z:\pestpcbsrv\HPCHEM1\ECD_D\Data\PD060421\
 Data File : PD063445.D
 Signal(s) : Signal #1: ECD1A.ch Signal #2: ECD2B.ch
 Acq On : 03 Jun 2021 21:44
 Operator : AR\AJ
 Sample : M2580-25
 Misc :
 ALS Vial : 38 Sample Multiplier: 1

Instrument :
 ECD_D
 ClientSampleId :
 18-B3(2-4)

Integration File signal 1: autoint1.e
 Integration File signal 2: autoint2.e
 Quant Time: Jun 04 02:35:25 2021
 Quant Method : Z:\pestpcbsrv\HPCHEM1\ECD_D\Method\PD060221.M
 Quant Title : GC Extractables
 QLast Update : Thu Jun 03 01:33:41 2021
 Response via : Initial Calibration
 Integrator: ChemStation

Volume Inj. : 2 µl
 Signal #1 Phase : ZB-MR2 Signal #2 Phase: ZB-MR1
 Signal #1 Info : 30M x 0.32mm x0.2 Signal #2 Info : 30M x 0.32mm x 0.50µm

Compound	RT#1	RT#2	Resp#1	Resp#2	ng/ml	ng/ml

System Monitoring Compounds						
1) SA Tetrachlo...	3.439	3.971	32045865	312.0E6	23.159	23.288
28) SA Decachlor...	8.195	9.025	30934135	293.5E6	19.669	21.240

Target Compounds

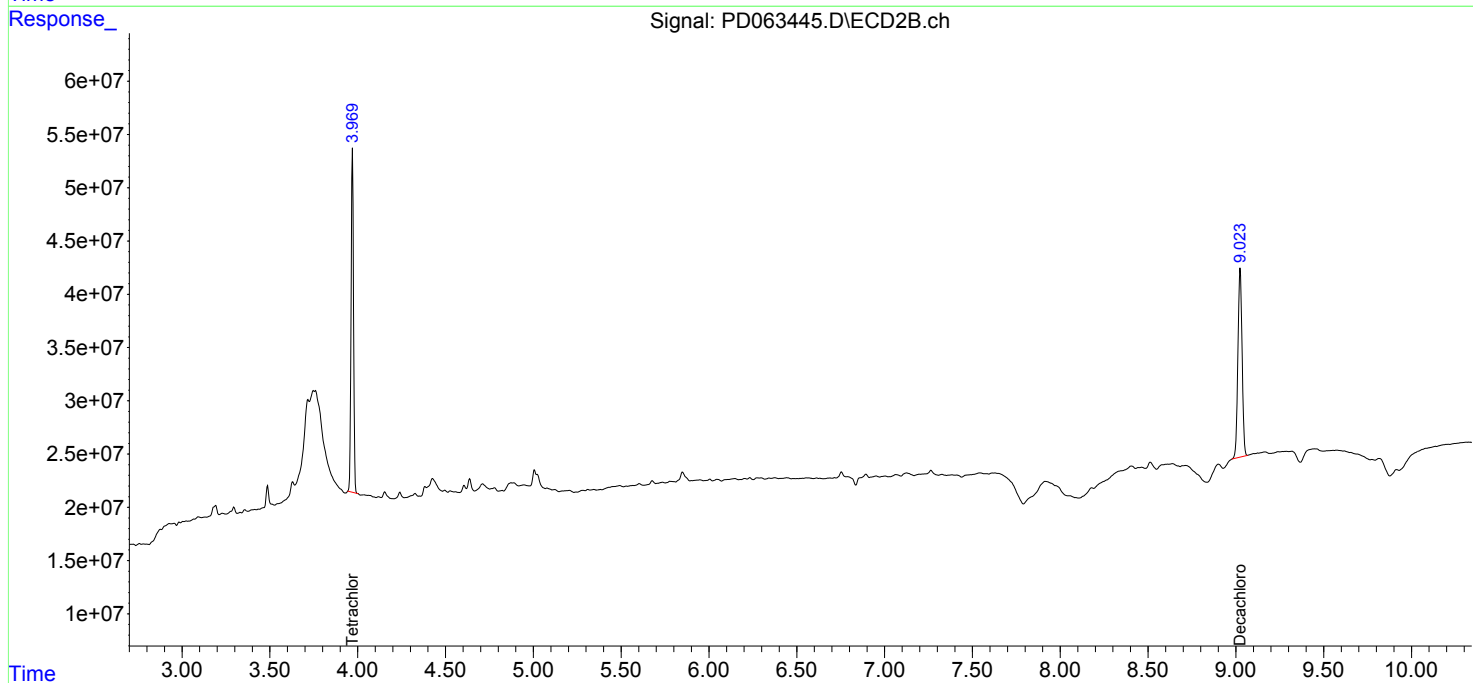
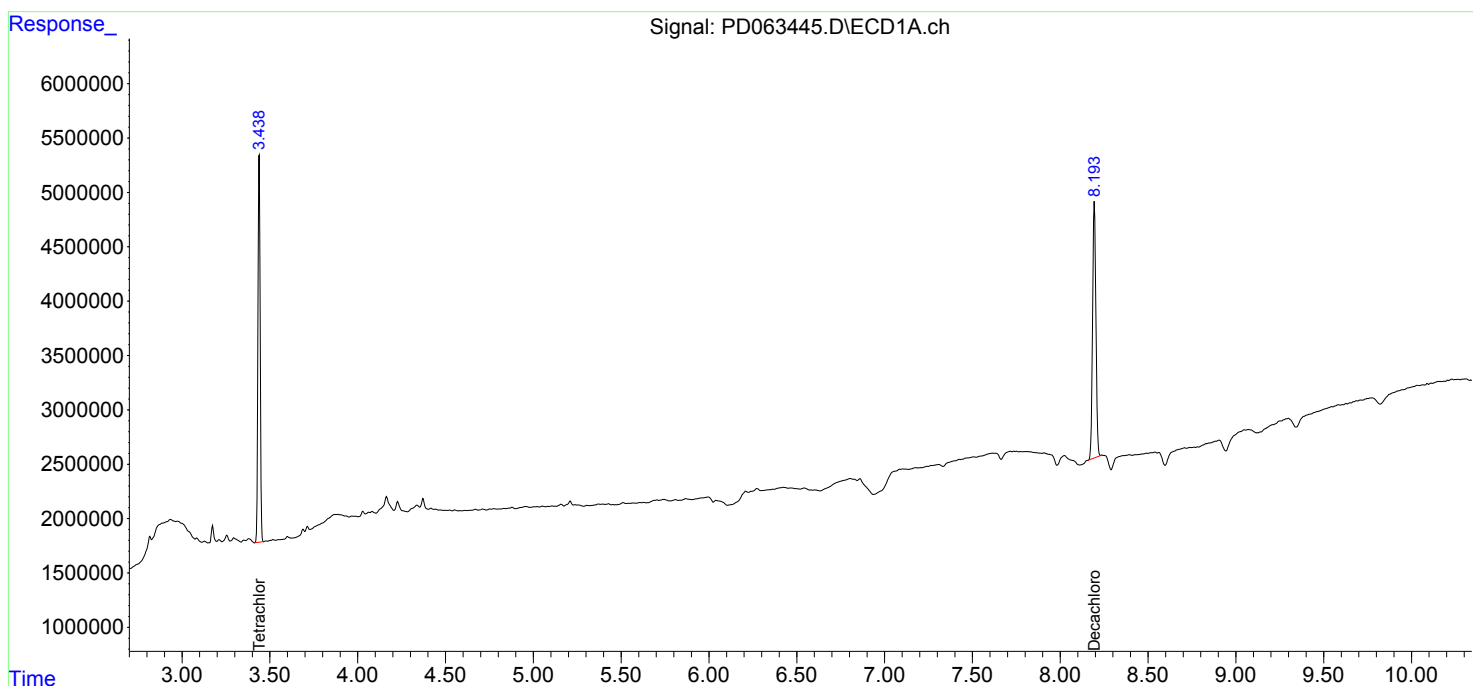
(f)=RT Delta > 1/2 Window (#)=Amounts differ by > 25% (m)=manual int.

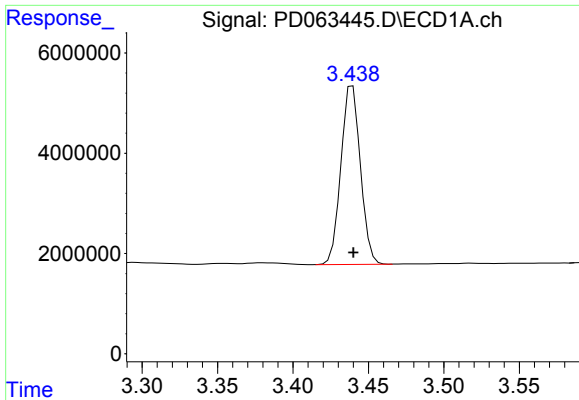
Data Path : Z:\pestpcbsrv\HPCHEM1\ECD_D\Data\PD060421\
 Data File : PD063445.D
 Signal(s) : Signal #1: ECD1A.ch Signal #2: ECD2B.ch
 Acq On : 03 Jun 2021 21:44
 Operator : AR\AJ
 Sample : M2580-25
 Misc :
 ALS Vial : 38 Sample Multiplier: 1

Instrument :
 ECD_D
 ClientSampleId :
 18-B3(2-4)

Integration File signal 1: autoint1.e
 Integration File signal 2: autoint2.e
 Quant Time: Jun 04 02:35:25 2021
 Quant Method : Z:\pestpcbsrv\HPCHEM1\ECD_D\Method\PD060221.M
 Quant Title : GC Extractables
 QLast Update : Thu Jun 03 01:33:41 2021
 Response via : Initial Calibration
 Integrator: ChemStation

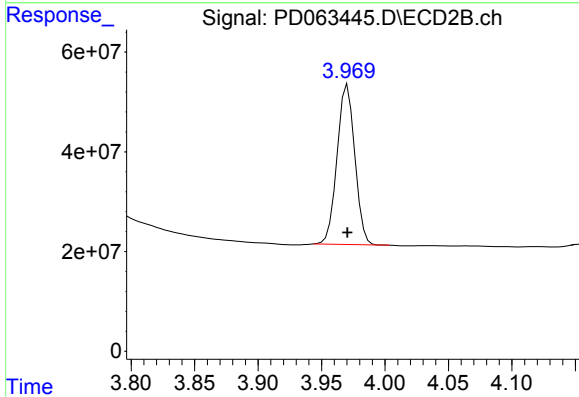
Volume Inj. : 2 µl
 Signal #1 Phase : ZB-MR2 Signal #2 Phase: ZB-MR1
 Signal #1 Info : 30M x 0.32mm x0.2 Signal #2 Info : 30M x 0.32mm x 0.50µm



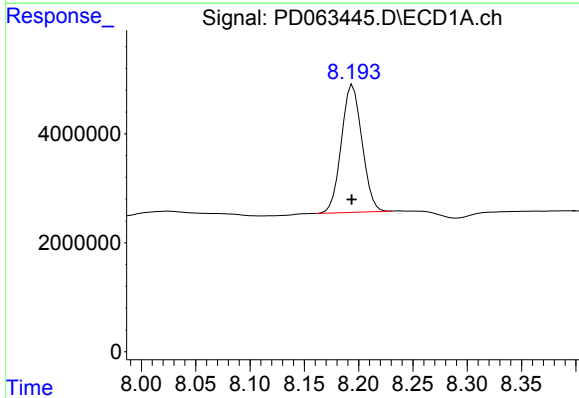


#1 Tetrachloro-m-xylene
 R.T.: 3.439 min
 Delta R.T.: 0.000 min
 Response: 32045865
 Conc: 23.16 ng/ml

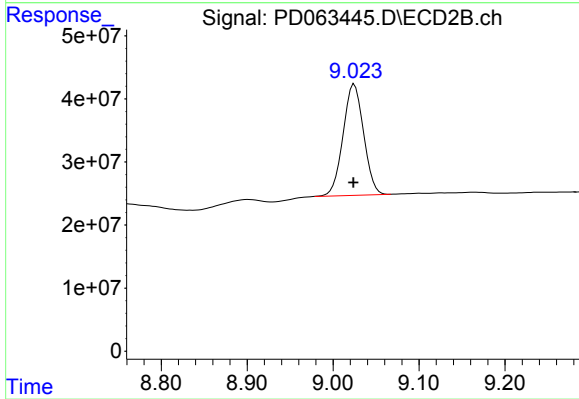
Instrument :
 ECD_D
 ClientSampleId :
 18-B3(2-4)



#1 Tetrachloro-m-xylene
 R.T.: 3.971 min
 Delta R.T.: 0.000 min
 Response: 312022841
 Conc: 23.29 ng/ml



#28 Decachlorobiphenyl
 R.T.: 8.195 min
 Delta R.T.: 0.000 min
 Response: 30934135
 Conc: 19.67 ng/ml



#28 Decachlorobiphenyl
 R.T.: 9.025 min
 Delta R.T.: 0.000 min
 Response: 293505050
 Conc: 21.24 ng/ml