

Data Path : Z:\pestpcbsrv\HPCHEM1\ECD_D\Data\PD060424\
 Data File : PD083325.D
 Signal(s) : Signal #1: ECD1A.ch Signal #2: ECD2B.ch
 Acq On : 03 Jun 2024 20:16
 Operator : AR\AJ
 Sample : HEXANE
 Misc :
 ALS Vial : 1 Sample Multiplier: 1

Integration File signal 1: autoint1.e
 Integration File signal 2: autoint2.e
 Quant Time: Jun 04 07:08:42 2024
 Quant Method : Z:\pestpcbsrv\HPCHEM1\ECD_D\Method\PD060424CLP.M
 Quant Title : GC Extractables
 QLast Update : Tue Jun 04 07:04:40 2024
 Response via : Initial Calibration
 Integrator: ChemStation

Volume Inj. : 1 µl
 Signal #1 Phase : ZB-MR2 Signal #2 Phase: ZB-MR2
 Signal #1 Info : 30M x 0.32mm x0.5 Signal #2 Info : 30M x 0.32mm x 0.25µm

Compound	RT#1	RT#2	Resp#1	Resp#2	ng/ml	ng/ml

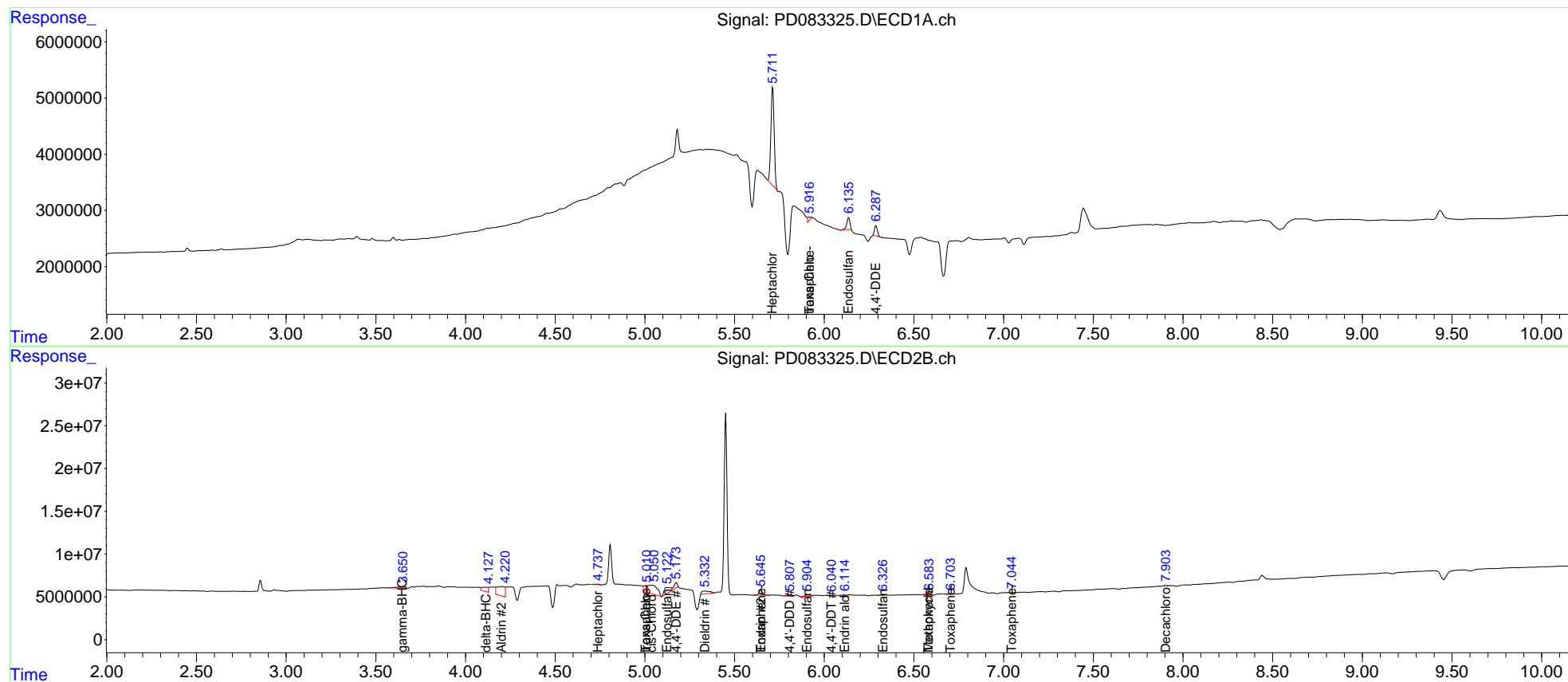
System Monitoring Compounds						
1) SA Tetrachlo...	0.000	2.770	0	131882	N.D.	<MDL
2) SA Decachlor...	0.000	7.904	0	1147701	N.D.	0.230
Target Compounds						
3) MA gamma-BHC...	0.000	3.649f	0	5489566	N.D.	0.809
4) MA Heptachlor	0.000	3.925	0	606458	N.D.	<MDL
5) MB Aldrin	0.000	4.200	0	33202403	N.D.	5.128
6) B beta-BHC	0.000	3.911	0	9730	N.D.	<MDL
7) B delta-BHC	0.000	4.115	0	11967305	N.D.	1.698
8) B Heptachlo...	5.713	4.737	22118875	1230426	10.071	0.207 #
9) A Endosulfan I	6.136	5.124f	2489126	15954189	1.172	2.927 #
10) B trans-Chl...	5.917f	5.005f	1175902	9783539	0.542	1.673 #
11) B cis-Chlor...	0.000	5.038	0	38891523	N.D.	6.525
12) B 4,4'-DDE	6.288f	5.175f	1941808	7917418	0.874	1.386 #
13) MA Dieldrin	0.000	5.334	0	9898856	N.D.	1.632
14) MA Endrin	0.000	5.647	0	7656443	N.D.	1.428
15) B Endosulfa...	0.000	5.906	0	2448161	N.D.	0.489
16) A 4,4'-DDD	0.000	5.808	0	2583058	N.D.	0.558
17) MA 4,4'-DDT	0.000	6.041	0	582698	N.D.	0.125
18) B Endrin al...	0.000	6.116	0	1608390	N.D.	0.419
19) B Endosulfa...	0.000	6.327	0	1100998	N.D.	0.226
20) A Methoxychlor	0.000	6.580	0	1423602	N.D.	0.582
22) Toxaphene-1	5.917	5.005	1175902	9783539	177.889	330.481 #
23) Toxaphene-2	6.540f	5.647	-1092298	7656443	N.D.	229.757
24) Toxaphene-3	0.000	6.580	0	1423602	N.D.	13.559
25) Toxaphene-4	0.000	6.705	0	1154032	N.D.	7.748
26) Toxaphene-5	0.000	7.046	0	532541	N.D.	9.670

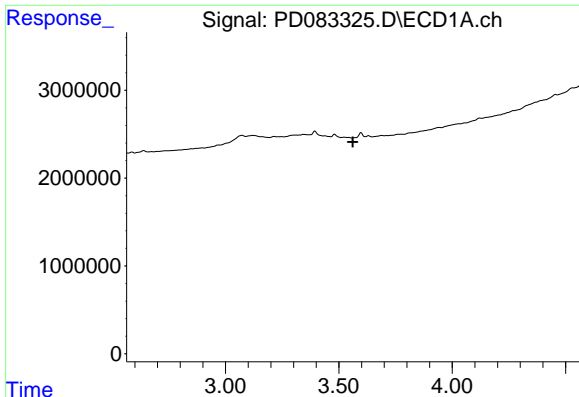
(f)=RT Delta > 1/2 Window (#)=Amounts differ by > 25% (m)=manual int.

Data Path : Z:\pestpcbsrv\HPCHEM1\ECD_D\Data\PD060424\
 Data File : PD083325.D
 Signal(s) : Signal #1: ECD1A.ch Signal #2: ECD2B.ch
 Acq On : 03 Jun 2024 20:16
 Operator : AR\AJ
 Sample : HEXANE
 Misc :
 ALS Vial : 1 Sample Multiplier: 1

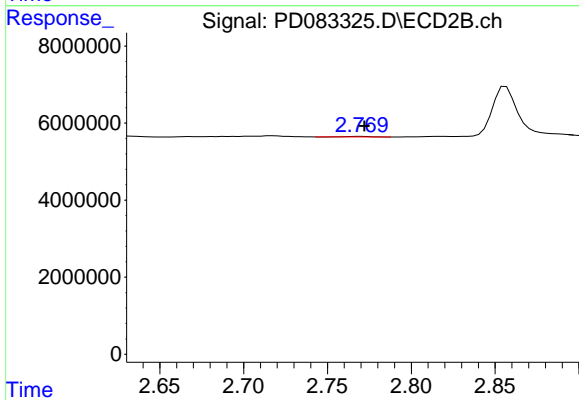
Integration File signal 1: autoint1.e
 Integration File signal 2: autoint2.e
 Quant Time: Jun 04 07:08:42 2024
 Quant Method : Z:\pestpcbsrv\HPCHEM1\ECD_D\Method\PD060424CLP.M
 Quant Title : GC Extractables
 QLast Update : Tue Jun 04 07:04:40 2024
 Response via : Initial Calibration
 Integrator: ChemStation

Volume Inj. : 1 µl
 Signal #1 Phase : ZB-MR1 Signal #2 Phase: ZB-MR2
 Signal #1 Info : 30M x 0.32mm x0.5 Signal #2 Info : 30M x 0.32mm x 0.25µm

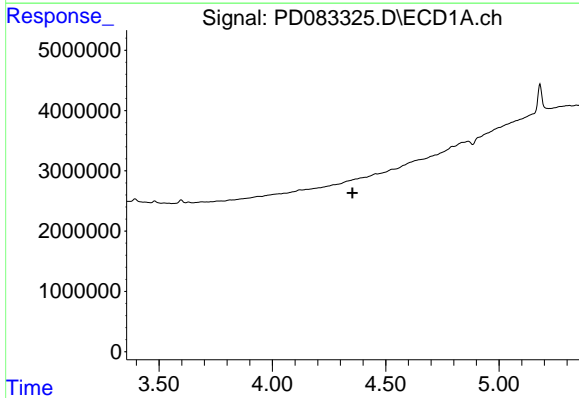




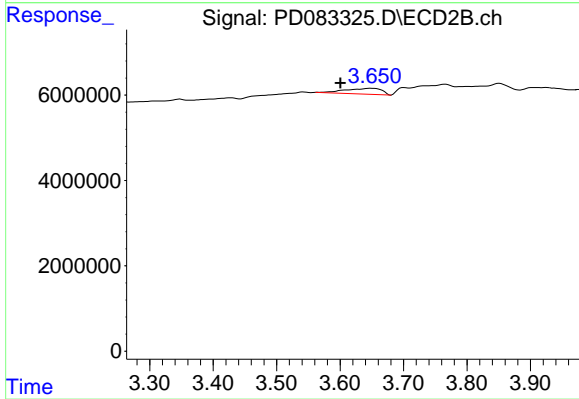
#1 Tetrachloro-m-xylene
 R.T.: 0.000 min
 Exp R.T. : 3.562 min
 Response: 0
 Conc: N.D.



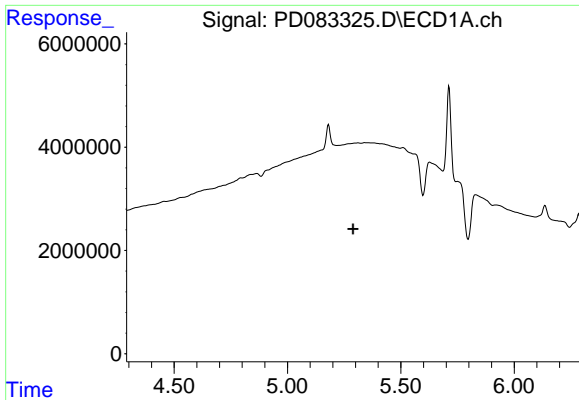
#1 Tetrachloro-m-xylene
 R.T.: 2.770 min
 Delta R.T.: -0.002 min
 Response: 131882
 Conc: N.D.



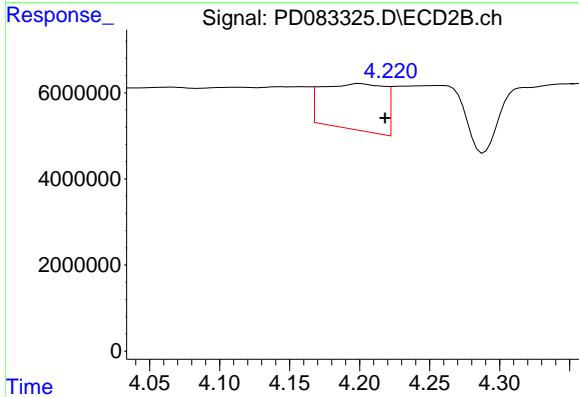
#3 gamma-BHC (Lindane)
 R.T.: 0.000 min
 Exp R.T. : 4.354 min
 Response: 0
 Conc: N.D.



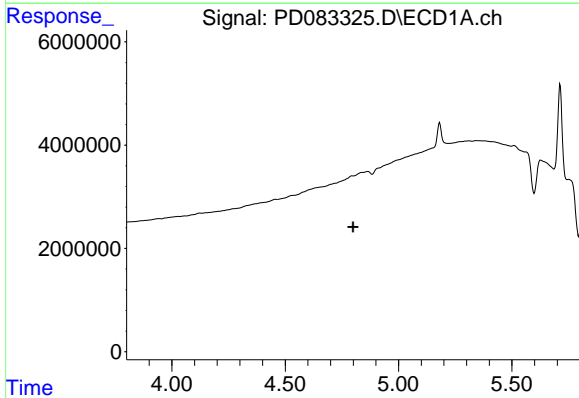
#3 gamma-BHC (Lindane)
 R.T.: 3.649 min
 Delta R.T.: 0.048 min
 Response: 5489566
 Conc: 0.81 ng/ml



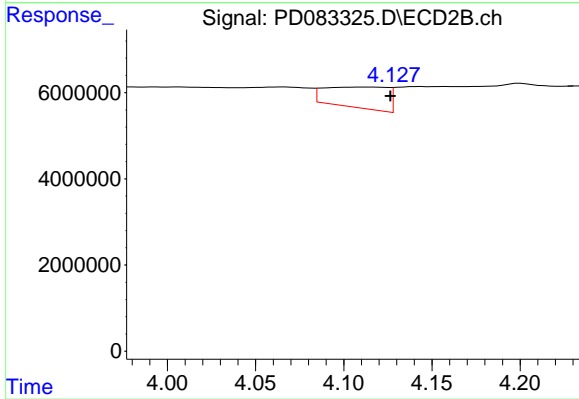
#5 Aldrin
 R.T.: 0.000 min
 Exp R.T. : 5.289 min
 Response: 0
 Conc: N.D.



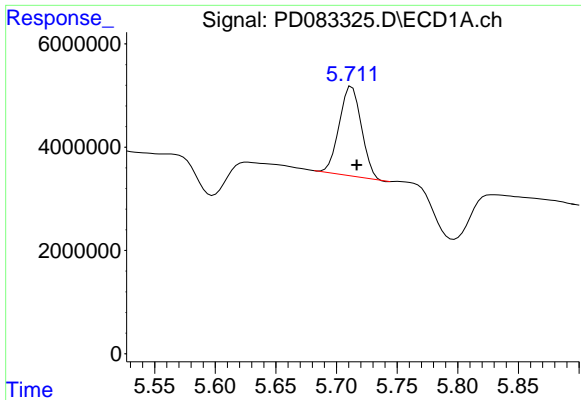
#5 Aldrin
 R.T.: 4.200 min
 Delta R.T.: -0.018 min
 Response: 33202403
 Conc: 5.13 ng/ml



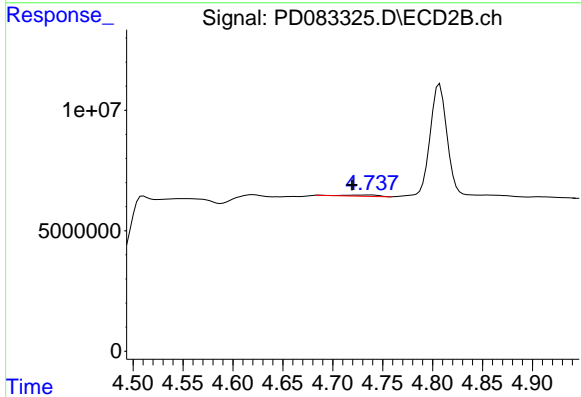
#7 delta-BHC
 R.T.: 0.000 min
 Exp R.T. : 4.800 min
 Response: 0
 Conc: N.D.



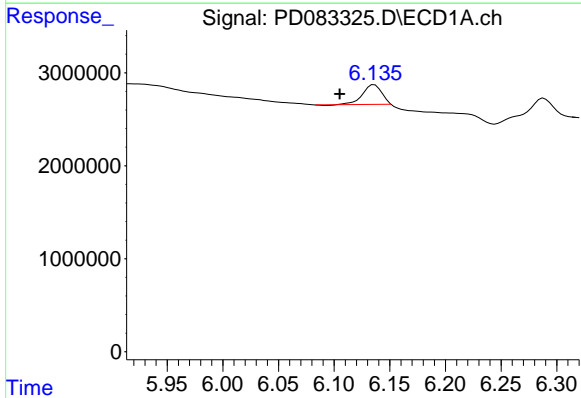
#7 delta-BHC
 R.T.: 4.115 min
 Delta R.T.: -0.012 min
 Response: 11967305
 Conc: 1.70 ng/ml



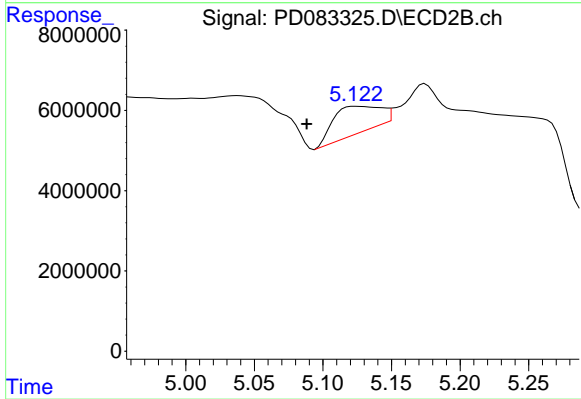
#8 Heptachlor epoxide
 R.T.: 5.713 min
 Delta R.T.: -0.004 min
 Response: 22118875
 Conc: 10.07 ng/ml



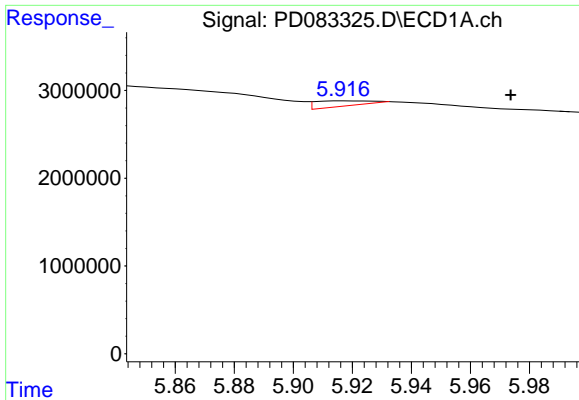
#8 Heptachlor epoxide
 R.T.: 4.737 min
 Delta R.T.: 0.018 min
 Response: 1230426
 Conc: 0.21 ng/ml



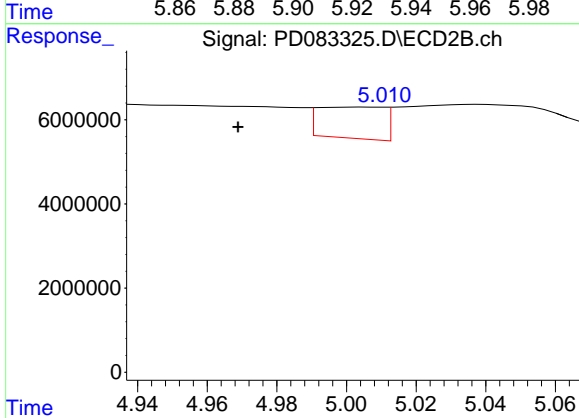
#9 Endosulfan I
 R.T.: 6.136 min
 Delta R.T.: 0.031 min
 Response: 2489126
 Conc: 1.17 ng/ml



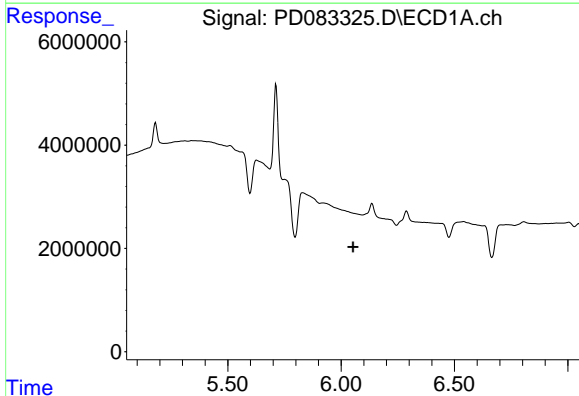
#9 Endosulfan I
 R.T.: 5.124 min
 Delta R.T.: 0.036 min
 Response: 15954189
 Conc: 2.93 ng/ml



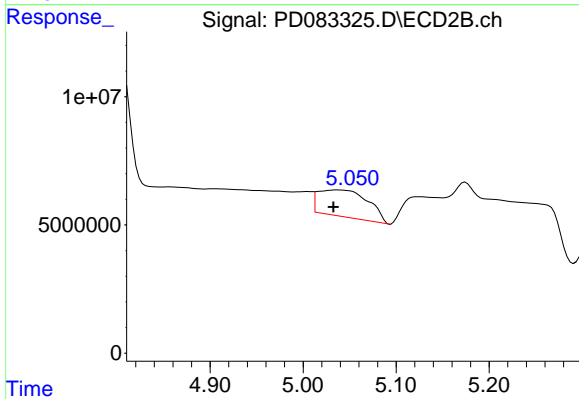
#10 trans-Chlordane
 R.T.: 5.917 min
 Delta R.T.: -0.056 min
 Response: 1175902
 Conc: 0.54 ng/ml



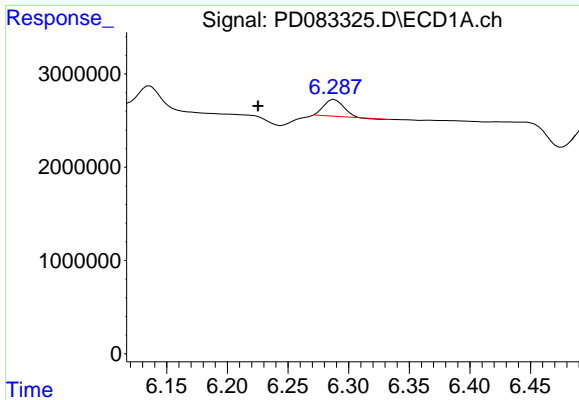
#10 trans-Chlordane
 R.T.: 5.005 min
 Delta R.T.: 0.037 min
 Response: 9783539
 Conc: 1.67 ng/ml



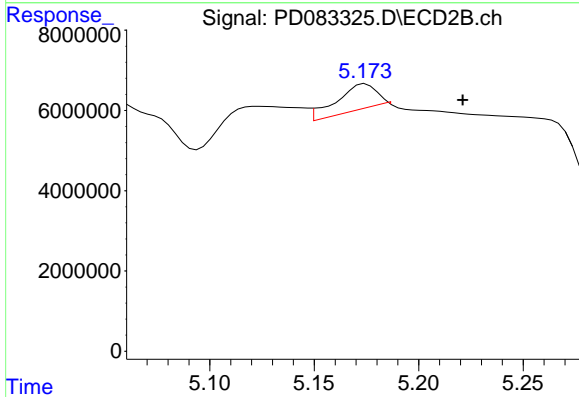
#11 cis-Chlordane
 R.T.: 0.000 min
 Exp R.T. : 6.053 min
 Response: 0
 Conc: N.D.



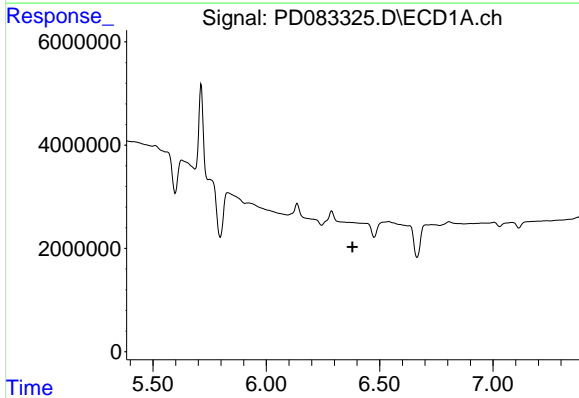
#11 cis-Chlordane
 R.T.: 5.038 min
 Delta R.T.: 0.005 min
 Response: 38891523
 Conc: 6.52 ng/ml



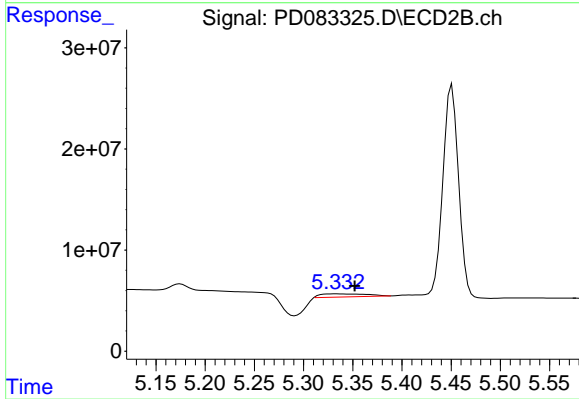
#12 4,4'-DDE
 R.T.: 6.288 min
 Delta R.T.: 0.063 min
 Response: 1941808
 Conc: 0.87 ng/ml



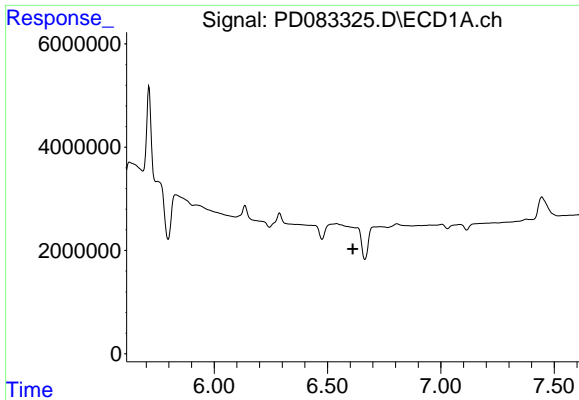
#12 4,4'-DDE
 R.T.: 5.175 min
 Delta R.T.: -0.046 min
 Response: 7917418
 Conc: 1.39 ng/ml



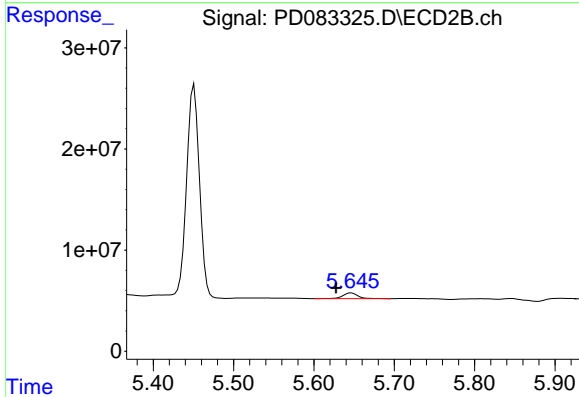
#13 Dieldrin
 R.T.: 0.000 min
 Exp R.T. : 6.381 min
 Response: 0
 Conc: N.D.



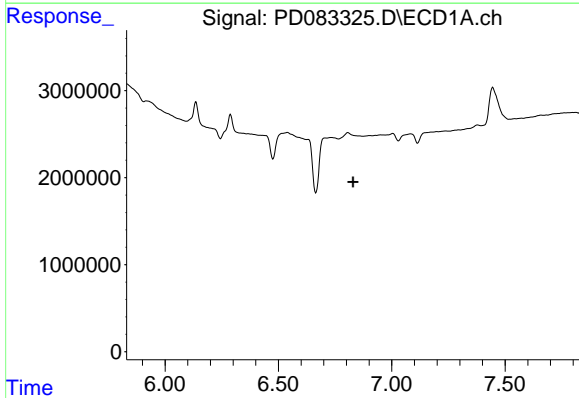
#13 Dieldrin
 R.T.: 5.334 min
 Delta R.T.: -0.019 min
 Response: 9898856
 Conc: 1.63 ng/ml



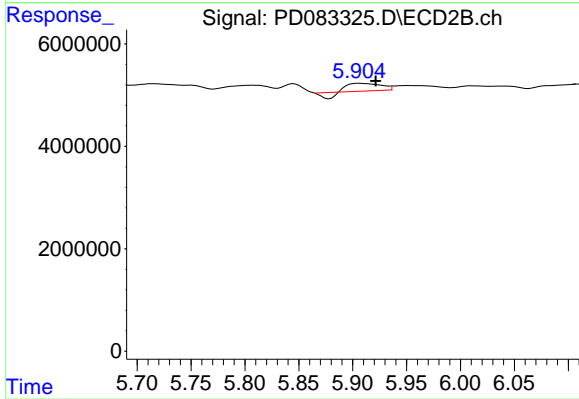
#14 Endrin
 R.T.: 0.000 min
 Exp R.T. : 6.612 min
 Response: 0
 Conc: N.D.



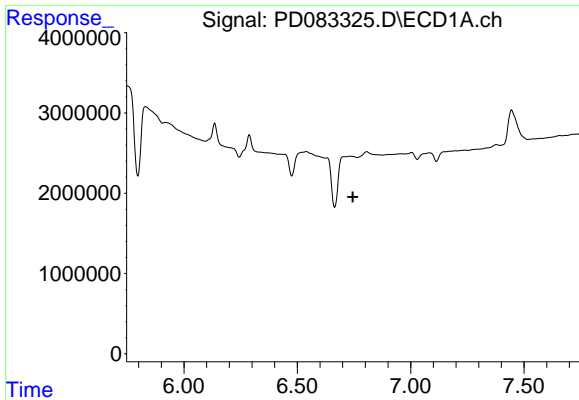
#14 Endrin
 R.T.: 5.647 min
 Delta R.T.: 0.019 min
 Response: 7656443
 Conc: 1.43 ng/ml



#15 Endosulfan II
 R.T.: 0.000 min
 Exp R.T. : 6.830 min
 Response: 0
 Conc: N.D.

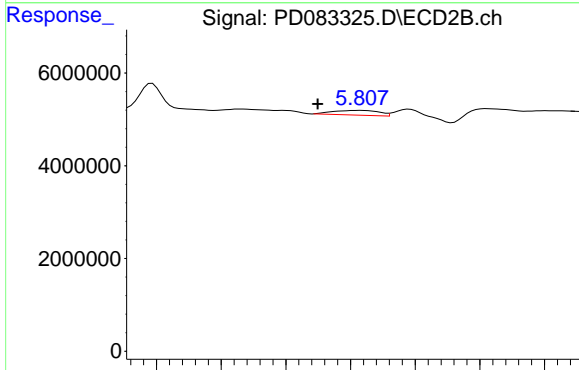


#15 Endosulfan II
 R.T.: 5.906 min
 Delta R.T.: -0.015 min
 Response: 2448161
 Conc: 0.49 ng/ml



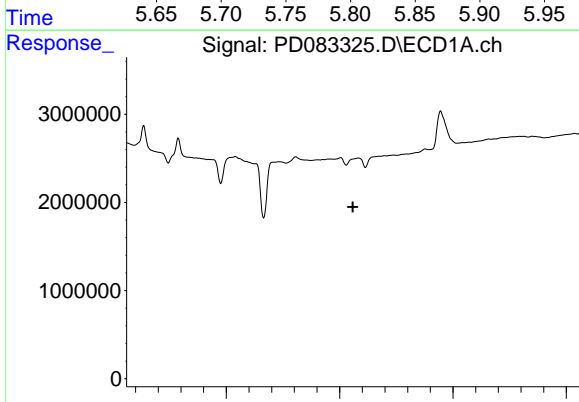
#16 4,4'-DDD

R.T.: 0.000 min
 Exp R.T.: 6.745 min
 Response: 0
 Conc: N.D.



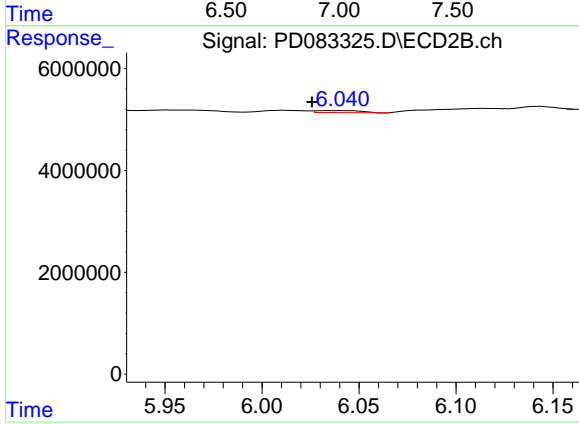
#16 4,4'-DDD

R.T.: 5.808 min
 Delta R.T.: 0.033 min
 Response: 2583058
 Conc: 0.56 ng/ml



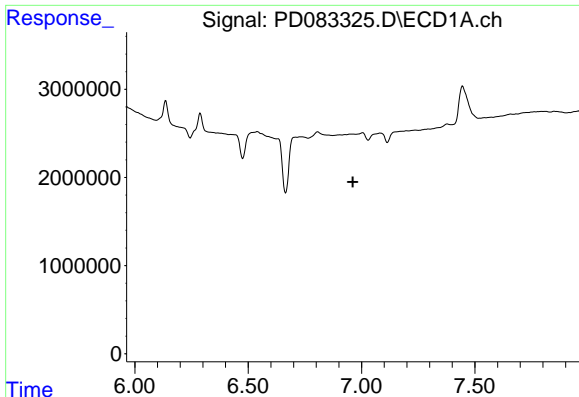
#17 4,4'-DDT

R.T.: 0.000 min
 Exp R.T.: 7.059 min
 Response: 0
 Conc: N.D.



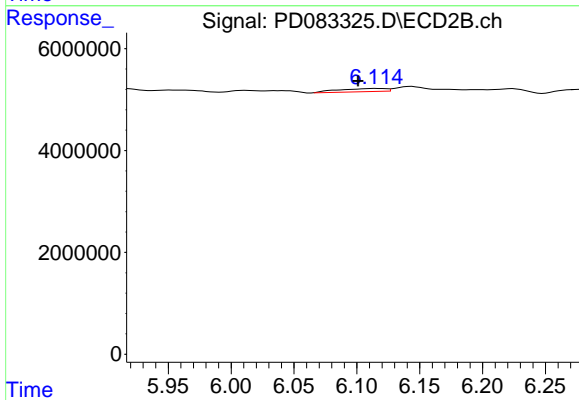
#17 4,4'-DDT

R.T.: 6.041 min
 Delta R.T.: 0.015 min
 Response: 582698
 Conc: 0.12 ng/ml



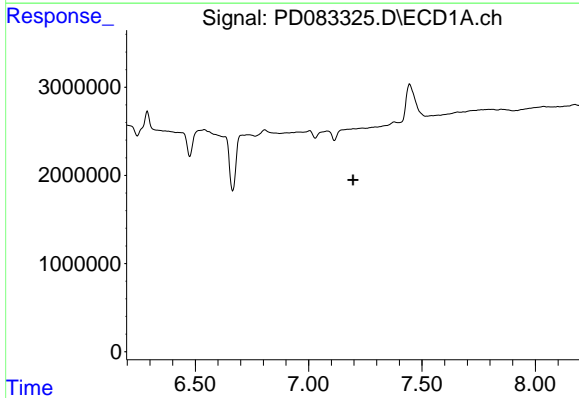
#18 Endrin aldehyde

R.T.: 0.000 min
 Exp R.T. : 6.961 min
 Response: 0
 Conc: N.D.



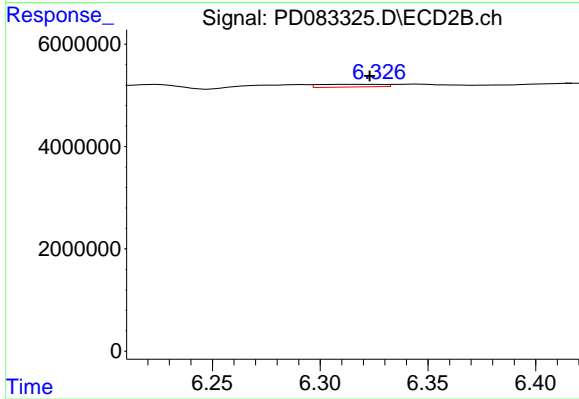
#18 Endrin aldehyde

R.T.: 6.116 min
 Delta R.T.: 0.015 min
 Response: 1608390
 Conc: 0.42 ng/ml



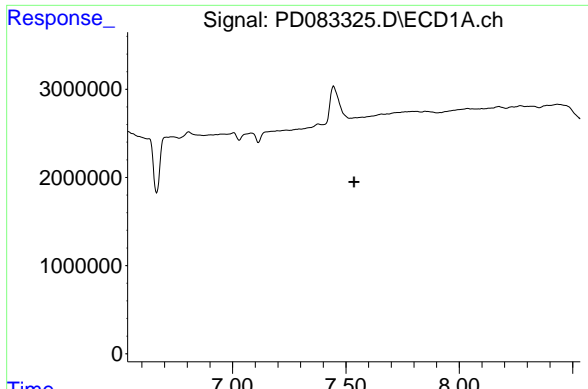
#19 Endosulfan Sulfate

R.T.: 0.000 min
 Exp R.T. : 7.196 min
 Response: 0
 Conc: N.D.

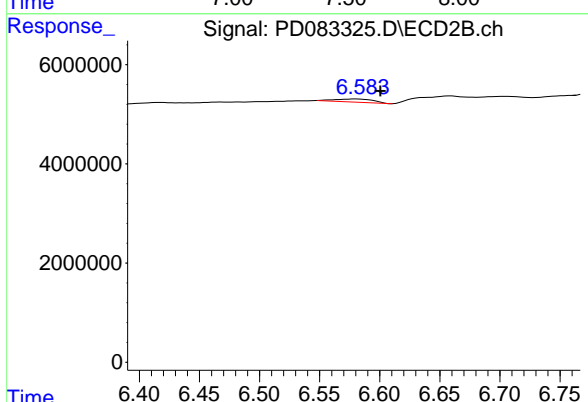


#19 Endosulfan Sulfate

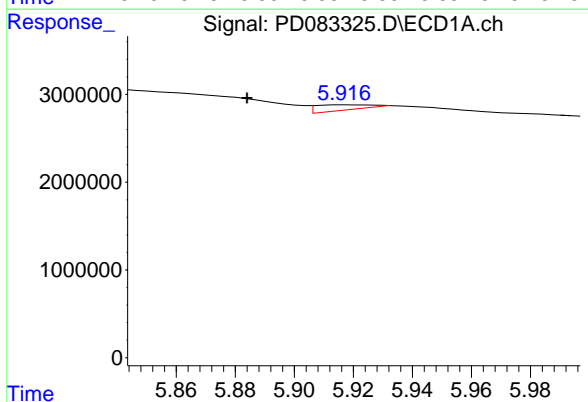
R.T.: 6.327 min
 Delta R.T.: 0.004 min
 Response: 1100998
 Conc: 0.23 ng/ml



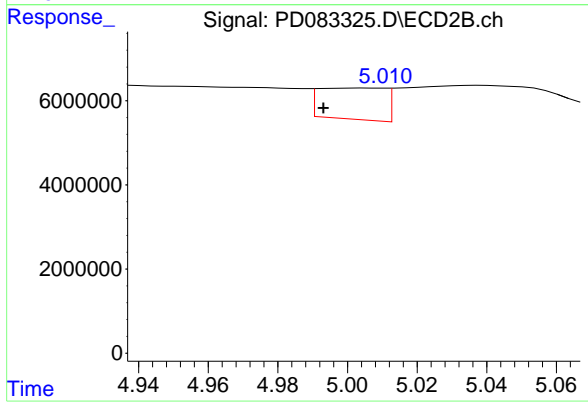
#20 Methoxychlor
 R.T.: 0.000 min
 Exp R.T.: 7.537 min
 Response: 0
 Conc: N.D.



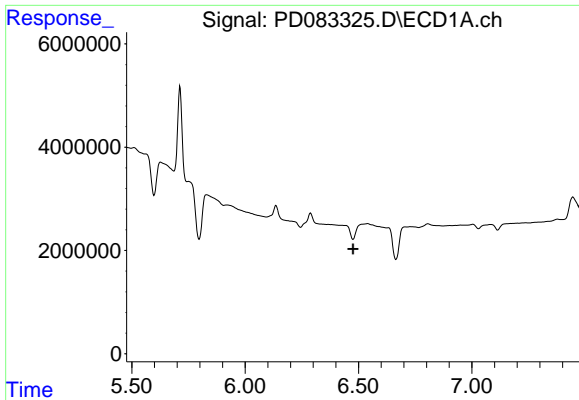
#20 Methoxychlor
 R.T.: 6.580 min
 Delta R.T.: -0.020 min
 Response: 1423602
 Conc: 0.58 ng/ml



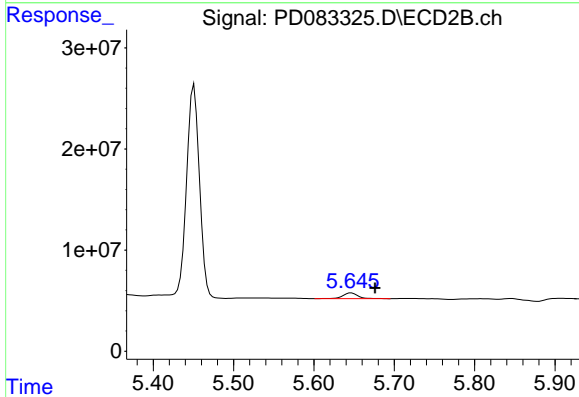
#22 Toxaphene-1
 R.T.: 5.917 min
 Delta R.T.: 0.033 min
 Response: 1175902
 Conc: 177.89 ng/ml



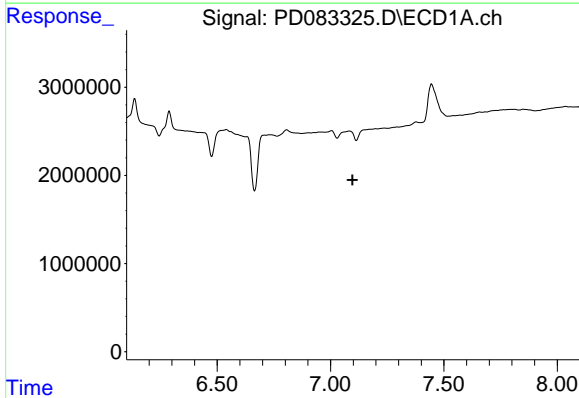
#22 Toxaphene-1
 R.T.: 5.005 min
 Delta R.T.: 0.012 min
 Response: 9783539
 Conc: 330.48 ng/ml



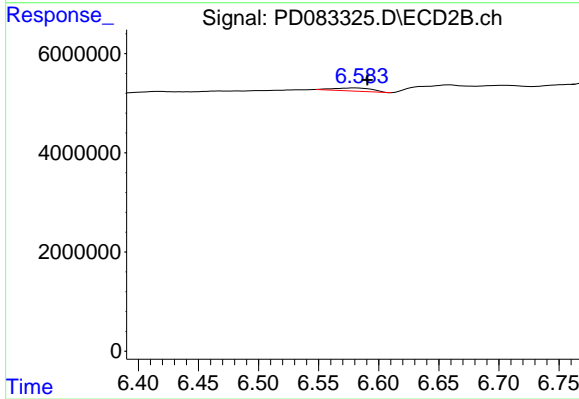
#23 Toxaphene-2
 R.T.: 6.540 min
 Delta R.T.: 0.064 min
 Response: -1092298
 Conc: N.D.



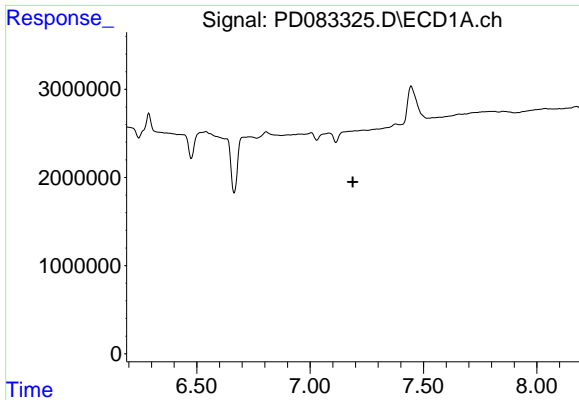
#23 Toxaphene-2
 R.T.: 5.647 min
 Delta R.T.: -0.029 min
 Response: 7656443
 Conc: 229.76 ng/ml



#24 Toxaphene-3
 R.T.: 0.000 min
 Exp R.T. : 7.097 min
 Response: 0
 Conc: N.D.

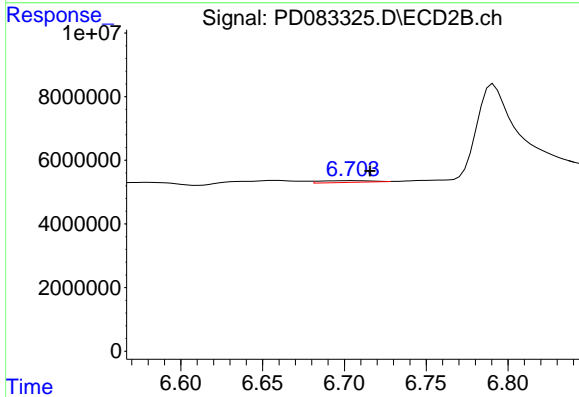


#24 Toxaphene-3
 R.T.: 6.580 min
 Delta R.T.: -0.010 min
 Response: 1423602
 Conc: 13.56 ng/ml



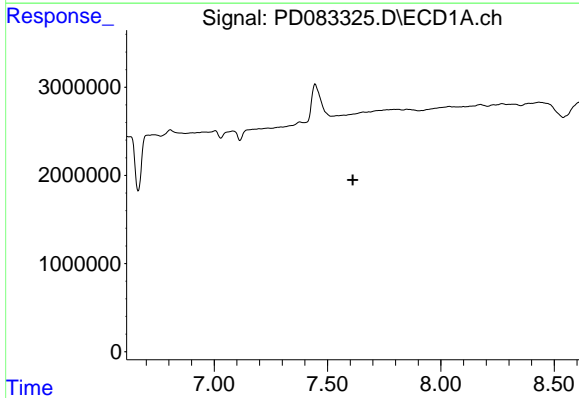
#25 Toxaphene-4

R.T.: 0.000 min
 Exp R.T.: 7.189 min
 Response: 0
 Conc: N.D.



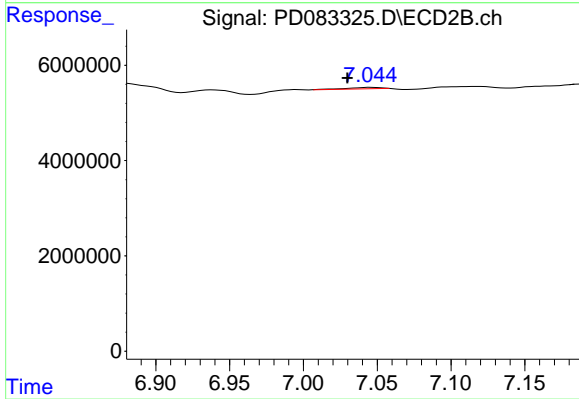
#25 Toxaphene-4

R.T.: 6.705 min
 Delta R.T.: -0.011 min
 Response: 1154032
 Conc: 7.75 ng/ml



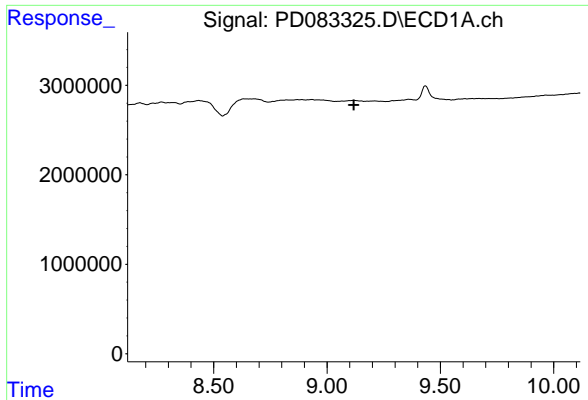
#26 Toxaphene-5

R.T.: 0.000 min
 Exp R.T.: 7.611 min
 Response: 0
 Conc: N.D.



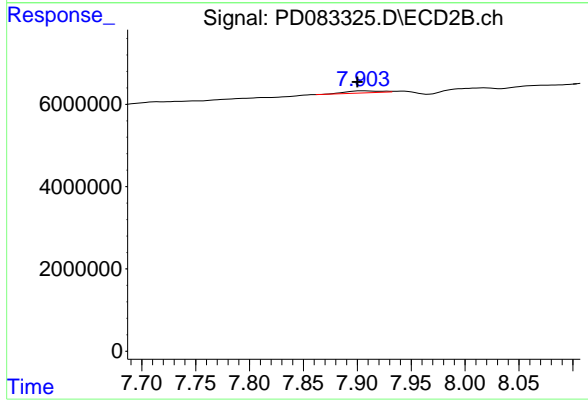
#26 Toxaphene-5

R.T.: 7.046 min
 Delta R.T.: 0.016 min
 Response: 532541
 Conc: 9.67 ng/ml



#27 Decachlorobiphenyl

R.T.: 0.000 min
Exp R.T. : 9.118 min
Response: 0
Conc: N.D.



#27 Decachlorobiphenyl

R.T.: 7.904 min
Delta R.T.: 0.004 min
Response: 1147701
Conc: 0.23 ng/ml