

Data Path : Z:\pestpcbsrv\HPCHEM1\ECD_D\Data\PD060621\
 Data File : PD063502.D
 Signal(s) : Signal #1: ECD1A.ch Signal #2: ECD2B.ch
 Acq On : 05 Jun 2021 11:55
 Operator : AR\AJ
 Sample : M2589-10
 Misc :
 ALS Vial : 17 Sample Multiplier: 1

Instrument :
 ECD_D
 ClientSampleId :
 FOUNDATION-EXCAVATION-SAMP

Integration File signal 1: autoint1.e
 Integration File signal 2: autoint2.e
 Quant Time: Jun 07 08:16:01 2021
 Quant Method : Z:\pestpcbsrv\HPCHEM1\ECD_D\Method\PD060221.M
 Quant Title : GC Extractables
 QLast Update : Thu Jun 03 01:33:41 2021
 Response via : Initial Calibration
 Integrator: ChemStation

Volume Inj. : 2 µl
 Signal #1 Phase : ZB-MR2 Signal #2 Phase: ZB-MR1
 Signal #1 Info : 30M x 0.32mm x0.2 Signal #2 Info : 30M x 0.32mm x 0.50µm

Compound	RT#1	RT#2	Resp#1	Resp#2	ng/ml	ng/ml

System Monitoring Compounds						
1) SA Tetrachlo...	3.440	3.971	15017448	113.9E6	10.853	8.499
28) SA Decachlor...	8.197	9.027	11967374	110.0E6	7.609	7.963
Target Compounds						
3) MA gamma-BHC...	4.127f	4.645	279663	9375113	0.142	0.494 #
4) MA Heptachlor	4.453	0.000	1038984	0	0.535	N.D. #
5) MB Aldrin	4.710	5.453	961443	47294608	0.509	2.432 #
6) B beta-BHC	0.000	4.831f	0	31713156	N.D.	4.028 #
8) B Heptachlo...	0.000	5.831	0	78968864	N.D.	4.320 #
10) B gamma-Chl...	5.379	6.076	2970573	117.0E6	1.663	6.299 #
11) B alpha-Chl...	5.436	6.150	6808057	141.0E6	3.850	7.930 #
12) B 4,4'-DDE	5.600	6.303	7153203	89439895	4.114	4.922
13) MA Dieldrin	5.727	6.446	3028910	35049853	1.724	1.936
14) MA Endrin	5.995	6.665	3220588	14968008	2.025	0.974 #
15) B Endosulfa...	6.251	6.871	1088082	3930563	0.776	0.267 #
16) A 4,4'-DDD	6.117	6.797	5616862	79027146	3.873	5.311 #
17) MA 4,4'-DDT	6.358	7.093	36004609	293.0E6	24.922	19.466
18) B Endrin al...	6.450f	7.008	894130	2891507	0.751	0.239 #
19) B Endosulfa...	6.643	0.000	1164466	0	0.911	N.D. #
20) A Methoxychlor	6.889	0.000	2987116	0	3.745	N.D. #
21) B Endrin ke...	7.166f	0.000	774481	0	0.437	N.D. #
22) Mirex	0.000	8.178f	0	5027916	N.D.	0.503 #
23) Chlordane-1	4.307	4.962	3364586	40544815	69.310	70.094
24) Chlordane-2	4.785f	5.427	1525008	27527474	26.148	49.203 #
25) Chlordane-3	5.379	6.076	2970573	117.0E6	17.465	47.364 #
26) Chlordane-4	5.436	6.150	6808057	141.0E6	48.845	49.326
27) Chlordane-5	6.251f	6.975f	1088082	2444951	19.656	4.679 #

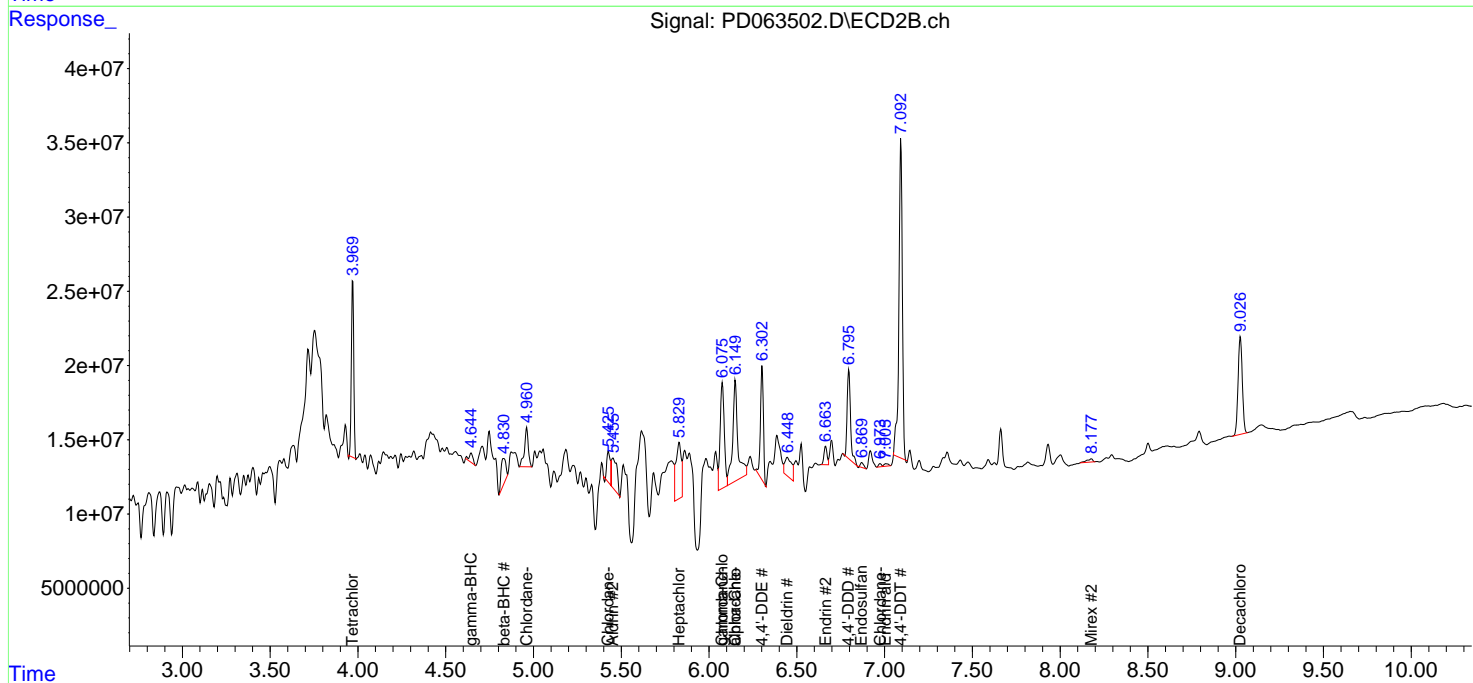
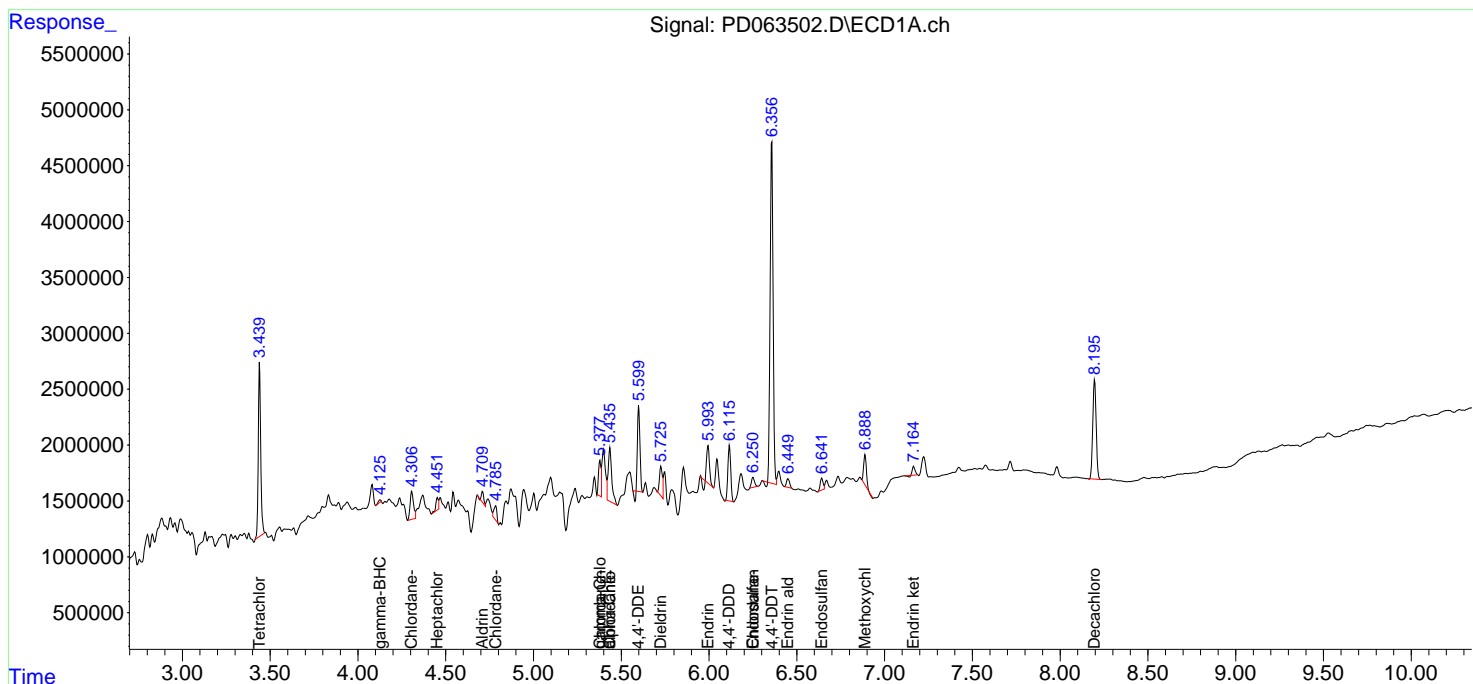
(f)=RT Delta > 1/2 Window (#)=Amounts differ by > 25% (m)=manual int.

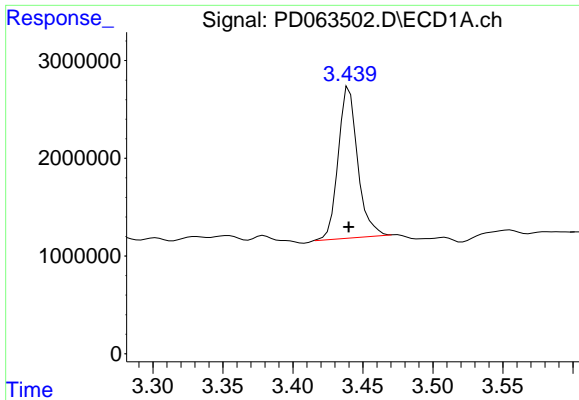
Data Path : Z:\pestpcbsrv\HPCHEM1\ECD_D\Data\PD060621\
 Data File : PD063502.D
 Signal(s) : Signal #1: ECD1A.ch Signal #2: ECD2B.ch
 Acq On : 05 Jun 2021 11:55
 Operator : AR\AJ
 Sample : M2589-10
 Misc :
 ALS Vial : 17 Sample Multiplier: 1

Instrument :
 ECD_D
 Client Sample ID :
 FOUNDATION-EXCAVATION-SAMP

Integration File signal 1: autoint1.e
 Integration File signal 2: autoint2.e
 Quant Time: Jun 07 08:16:01 2021
 Quant Method : Z:\pestpcbsrv\HPCHEM1\ECD_D\Method\PD060221.M
 Quant Title : GC Extractables
 QLast Update : Thu Jun 03 01:33:41 2021
 Response via : Initial Calibration
 Integrator: ChemStation

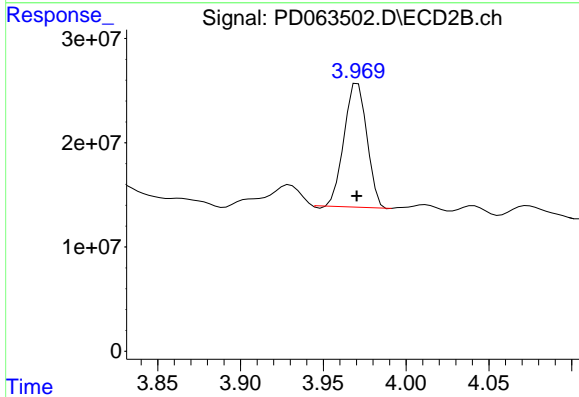
Volume Inj. : 2 µl
 Signal #1 Phase : ZB-MR2 Signal #2 Phase: ZB-MR1
 Signal #1 Info : 30M x 0.32mm x 0.2 Signal #2 Info : 30M x 0.32mm x 0.50µm



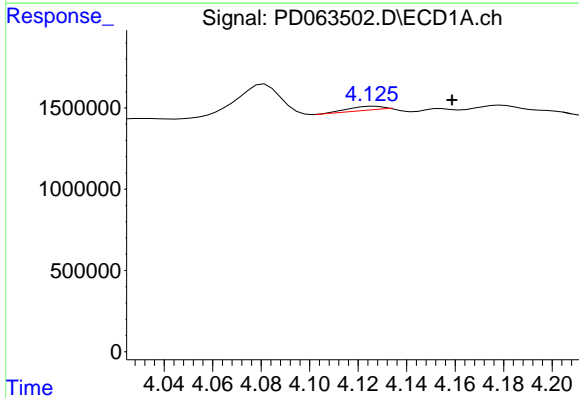


#1 Tetrachloro-m-xylene
 R.T.: 3.440 min
 Delta R.T.: 0.000 min
 Response: 15017448
 Conc: 10.85 ng/ml

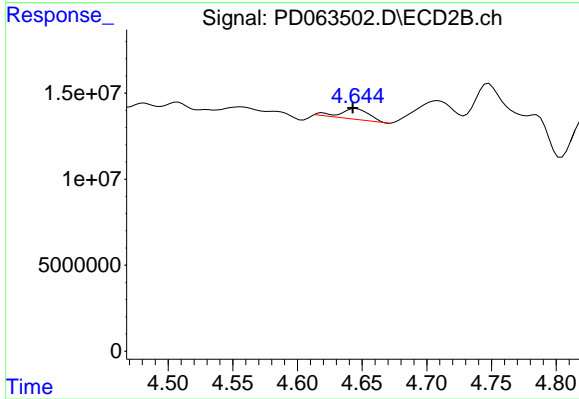
Instrument :
 ECD_D
 ClientSampleId :
 FOUNDATION-EXCAVATION-SAMP



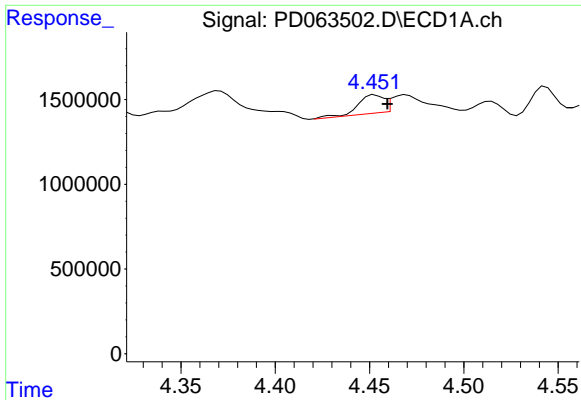
#1 Tetrachloro-m-xylene
 R.T.: 3.971 min
 Delta R.T.: 0.000 min
 Response: 113880850
 Conc: 8.50 ng/ml



#3 gamma-BHC (Lindane)
 R.T.: 4.127 min
 Delta R.T.: -0.032 min
 Response: 279663
 Conc: 0.14 ng/ml



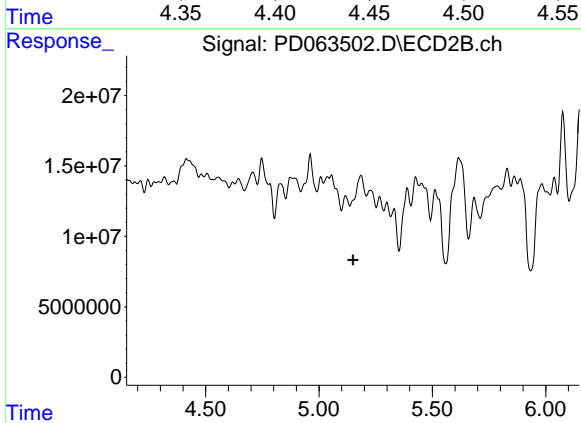
#3 gamma-BHC (Lindane)
 R.T.: 4.645 min
 Delta R.T.: 0.003 min
 Response: 9375113
 Conc: 0.49 ng/ml



#4 Heptachlor

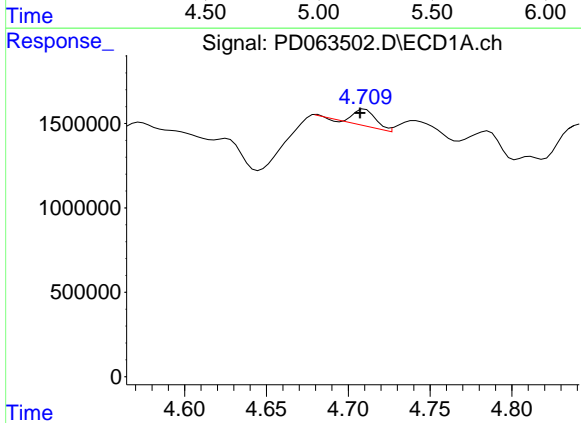
R.T.: 4.453 min
 Delta R.T.: -0.007 min
 Response: 1038984
 Conc: 0.54 ng/ml

Instrument :
 ECD_D
 ClientSampleId :
 FOUNDATION-EXCAVATION-SAMP



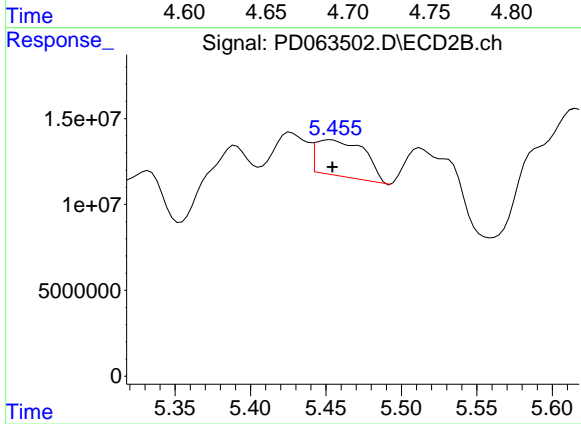
#4 Heptachlor

R.T.: 0.000 min
 Exp R.T. : 5.150 min
 Response: 0
 Conc: N.D.



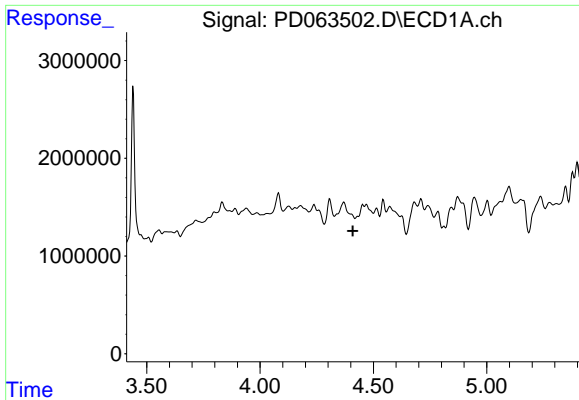
#5 Aldrin

R.T.: 4.710 min
 Delta R.T.: 0.003 min
 Response: 961443
 Conc: 0.51 ng/ml



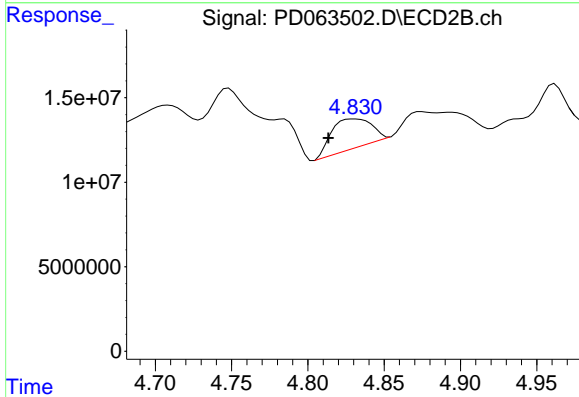
#5 Aldrin

R.T.: 5.453 min
 Delta R.T.: -0.001 min
 Response: 47294608
 Conc: 2.43 ng/ml

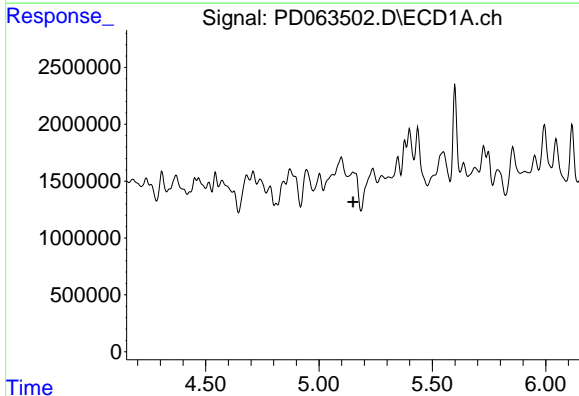


#6 beta-BHC
 R.T.: 0.000 min
 Exp R.T. : 4.410 min
 Response: 0
 Conc: N.D.

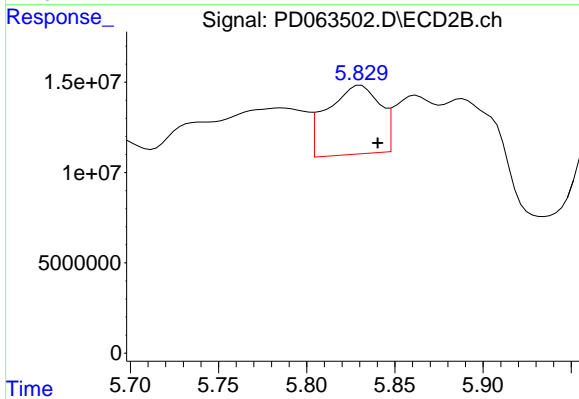
Instrument :
 ECD_D
 ClientSampleId :
 FOUNDATION-EXCAVATION-SAMP



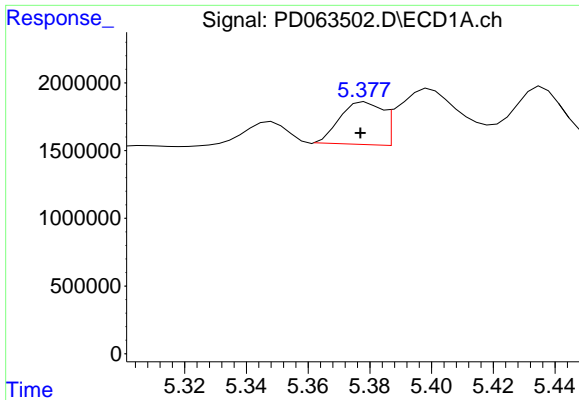
#6 beta-BHC
 R.T.: 4.831 min
 Delta R.T.: 0.017 min
 Response: 31713156
 Conc: 4.03 ng/ml



#8 Heptachlor epoxide
 R.T.: 0.000 min
 Exp R.T. : 5.150 min
 Response: 0
 Conc: N.D.



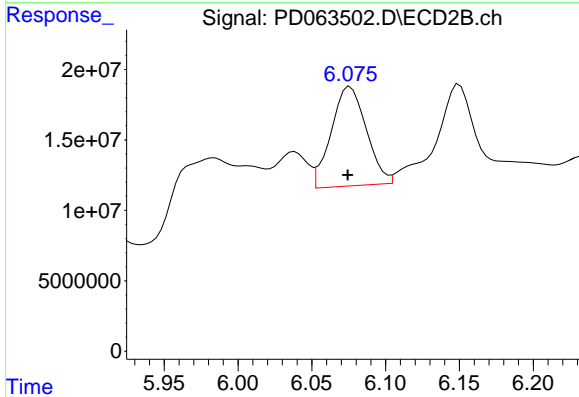
#8 Heptachlor epoxide
 R.T.: 5.831 min
 Delta R.T.: -0.010 min
 Response: 78968864
 Conc: 4.32 ng/ml



#10 gamma-Chlordane

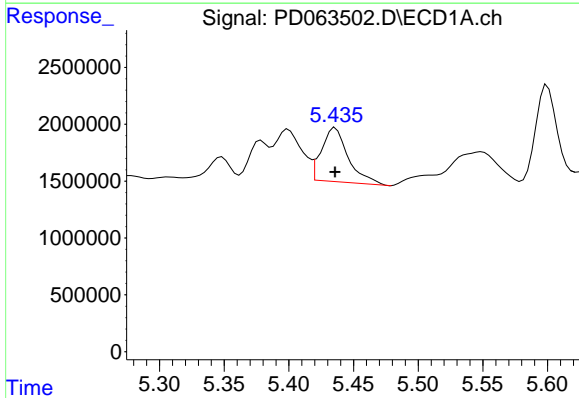
R.T.: 5.379 min
 Delta R.T.: 0.002 min
 Response: 2970573
 Conc: 1.66 ng/ml

Instrument :
 ECD_D
 ClientSampleId :
 FOUNDATION-EXCAVATION-SAMP



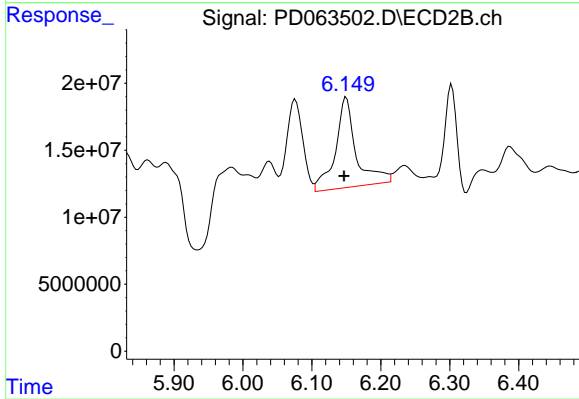
#10 gamma-Chlordane

R.T.: 6.076 min
 Delta R.T.: 0.002 min
 Response: 117018801
 Conc: 6.30 ng/ml



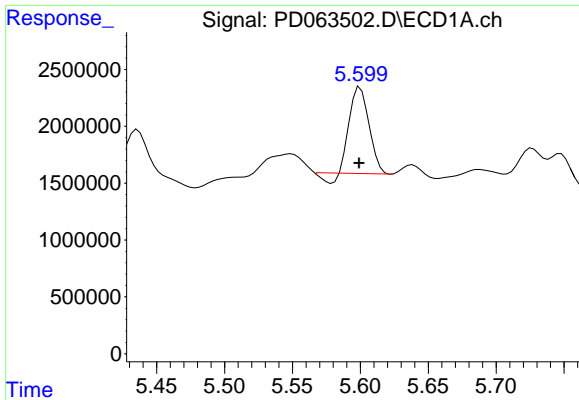
#11 alpha-Chlordane

R.T.: 5.436 min
 Delta R.T.: 0.000 min
 Response: 6808057
 Conc: 3.85 ng/ml



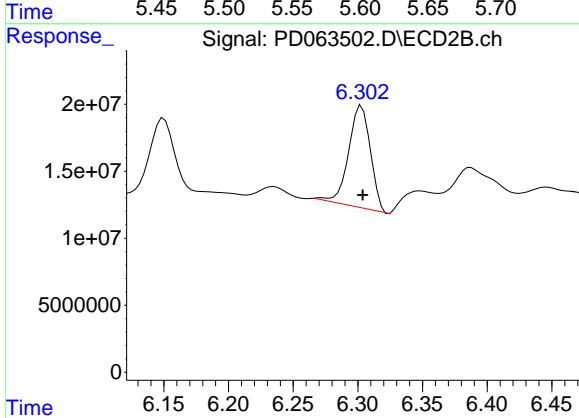
#11 alpha-Chlordane

R.T.: 6.150 min
 Delta R.T.: 0.003 min
 Response: 140988076
 Conc: 7.93 ng/ml

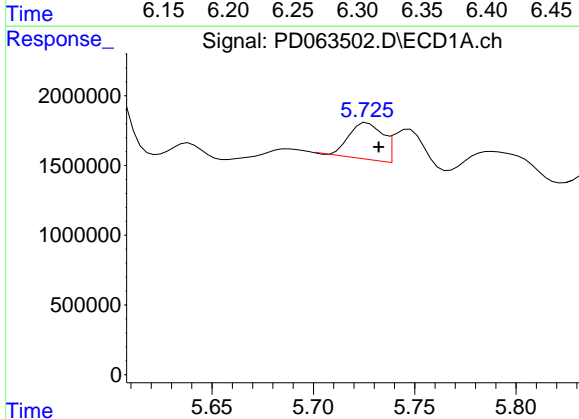


#12 4,4'-DDE
 R.T.: 5.600 min
 Delta R.T.: 0.000 min
 Response: 7153203
 Conc: 4.11 ng/ml

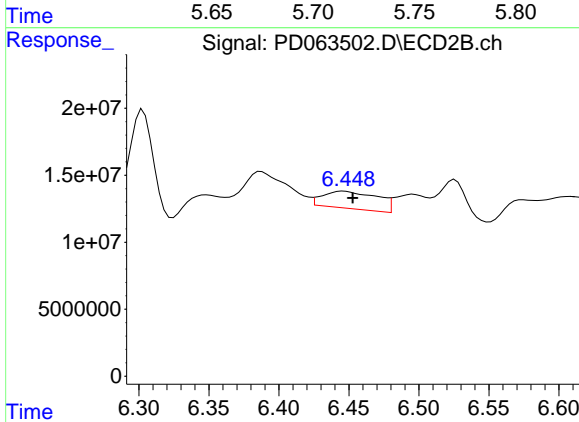
Instrument :
 ECD_D
 ClientSampleId :
 FOUNDATION-EXCAVATION-SAMP



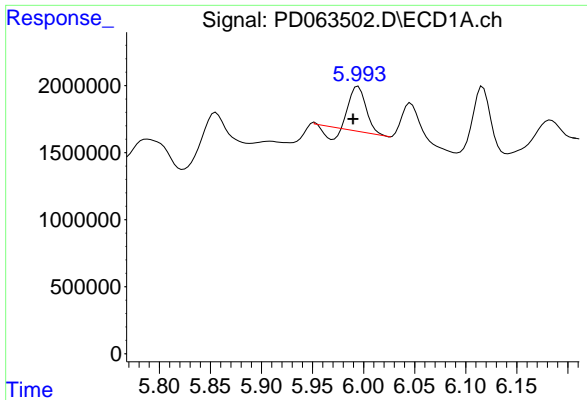
#12 4,4'-DDE
 R.T.: 6.303 min
 Delta R.T.: 0.000 min
 Response: 89439895
 Conc: 4.92 ng/ml



#13 Dieldrin
 R.T.: 5.727 min
 Delta R.T.: -0.006 min
 Response: 3028910
 Conc: 1.72 ng/ml



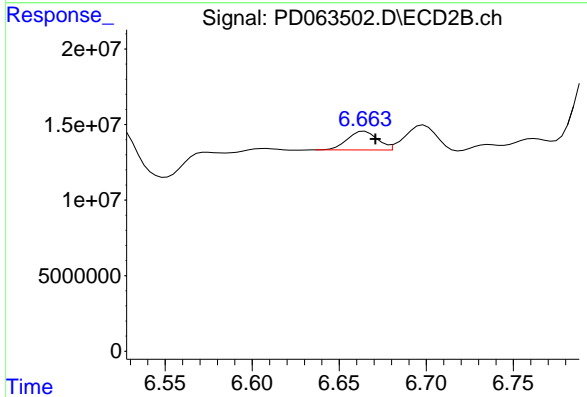
#13 Dieldrin
 R.T.: 6.446 min
 Delta R.T.: -0.006 min
 Response: 35049853
 Conc: 1.94 ng/ml



#14 Endrin

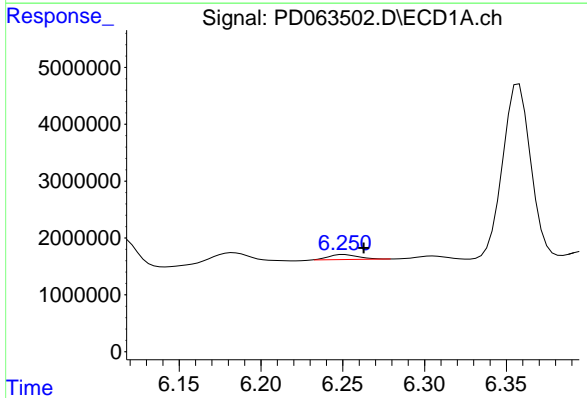
R.T.: 5.995 min
 Delta R.T.: 0.005 min
 Response: 3220588
 Conc: 2.02 ng/ml

Instrument :
 ECD_D
 ClientSampleId :
 FOUNDATION-EXCAVATION-SAMP



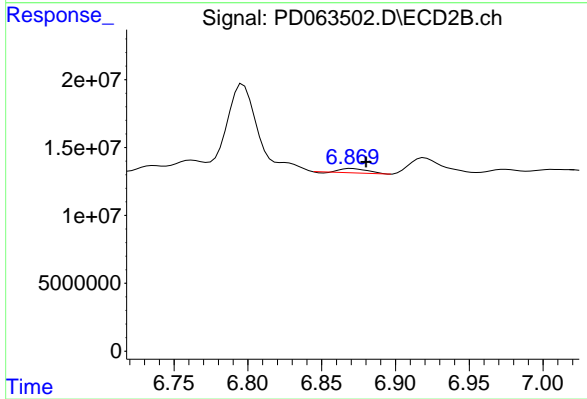
#14 Endrin

R.T.: 6.665 min
 Delta R.T.: -0.006 min
 Response: 14968008
 Conc: 0.97 ng/ml



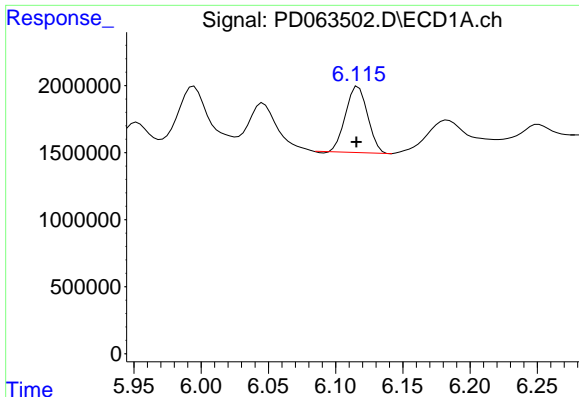
#15 Endosulfan II

R.T.: 6.251 min
 Delta R.T.: -0.012 min
 Response: 1088082
 Conc: 0.78 ng/ml



#15 Endosulfan II

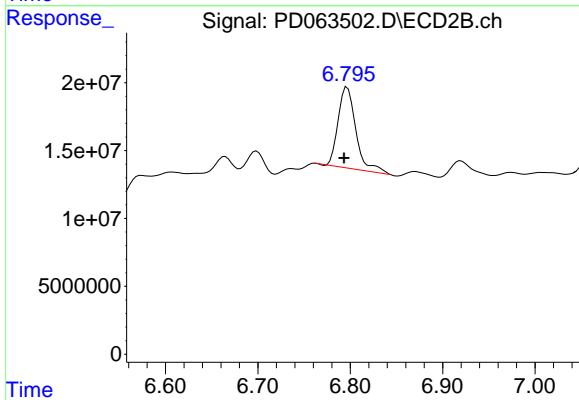
R.T.: 6.871 min
 Delta R.T.: -0.009 min
 Response: 3930563
 Conc: 0.27 ng/ml



#16 4,4'-DDD

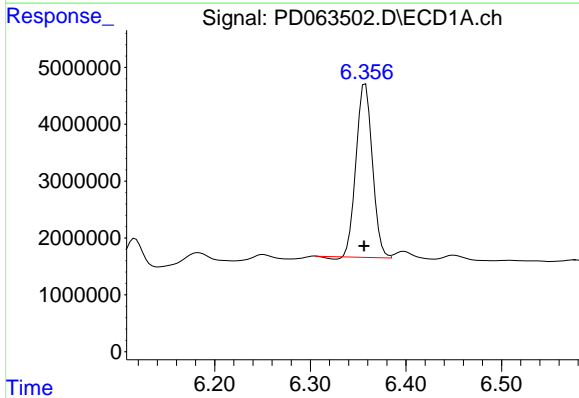
R.T.: 6.117 min
 Delta R.T.: 0.001 min
 Response: 5616862
 Conc: 3.87 ng/ml

Instrument :
 ECD_D
 ClientSampleId :
 FOUNDATION-EXCAVATION-SAMP



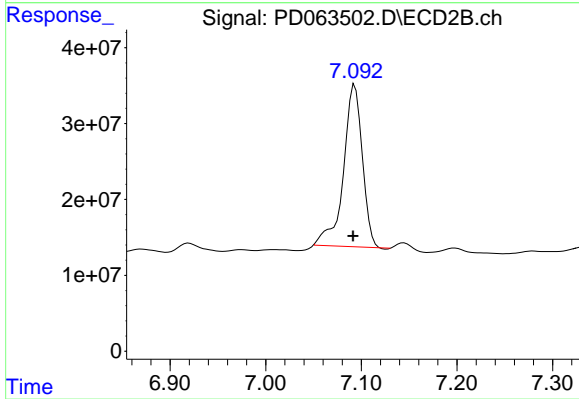
#16 4,4'-DDD

R.T.: 6.797 min
 Delta R.T.: 0.003 min
 Response: 79027146
 Conc: 5.31 ng/ml



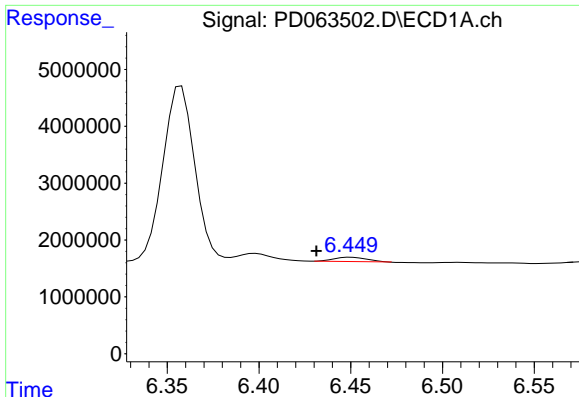
#17 4,4'-DDT

R.T.: 6.358 min
 Delta R.T.: 0.001 min
 Response: 36004609
 Conc: 24.92 ng/ml



#17 4,4'-DDT

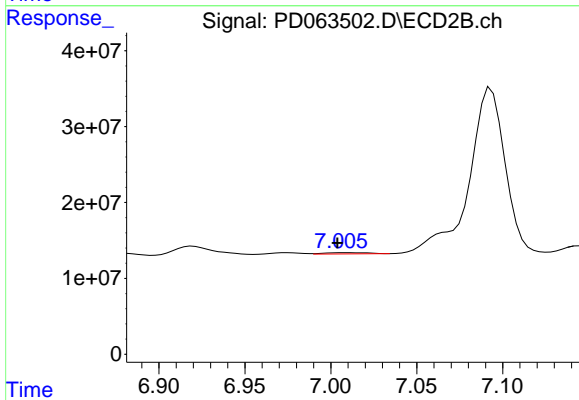
R.T.: 7.093 min
 Delta R.T.: 0.002 min
 Response: 293007310
 Conc: 19.47 ng/ml



#18 Endrin aldehyde

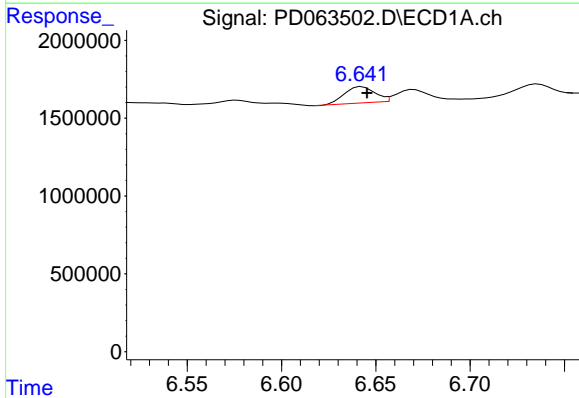
R.T.: 6.450 min
 Delta R.T.: 0.019 min
 Response: 894130
 Conc: 0.75 ng/ml

Instrument :
 ECD_D
 ClientSampleId :
 FOUNDATION-EXCAVATION-SAMP



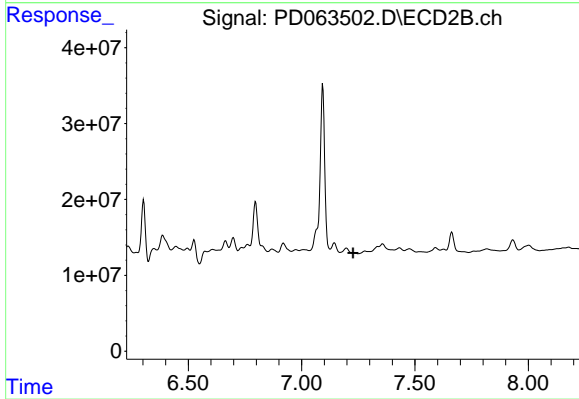
#18 Endrin aldehyde

R.T.: 7.008 min
 Delta R.T.: 0.004 min
 Response: 2891507
 Conc: 0.24 ng/ml



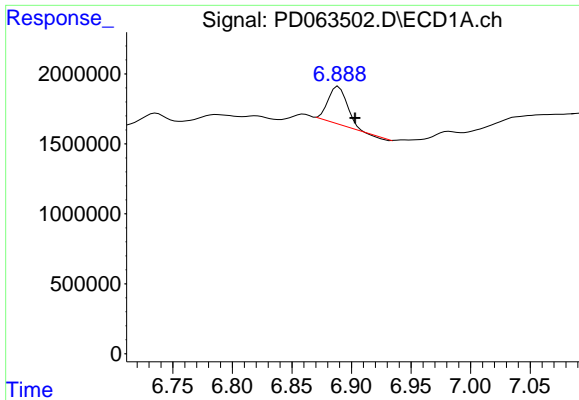
#19 Endosulfan Sulfate

R.T.: 6.643 min
 Delta R.T.: -0.003 min
 Response: 1164466
 Conc: 0.91 ng/ml



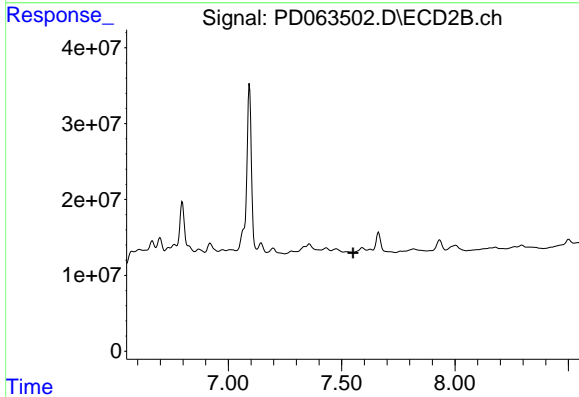
#19 Endosulfan Sulfate

R.T.: 0.000 min
 Exp R.T. : 7.227 min
 Response: 0
 Conc: N.D.

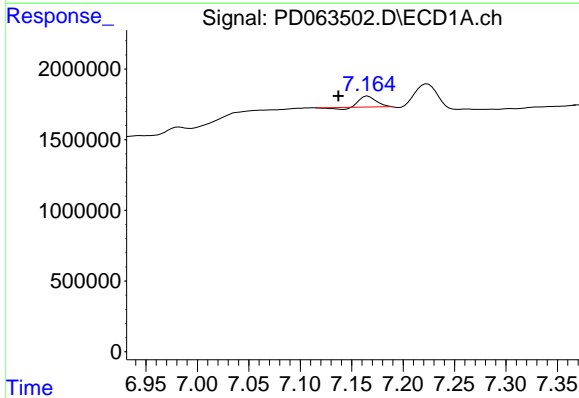


#20 Methoxychlor
 R.T.: 6.889 min
 Delta R.T.: -0.014 min
 Response: 2987116
 Conc: 3.75 ng/ml

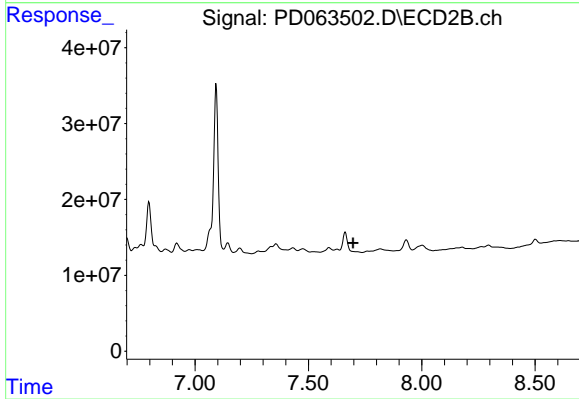
Instrument :
 ECD_D
 ClientSampleId :
 FOUNDATION-EXCAVATION-SAMP



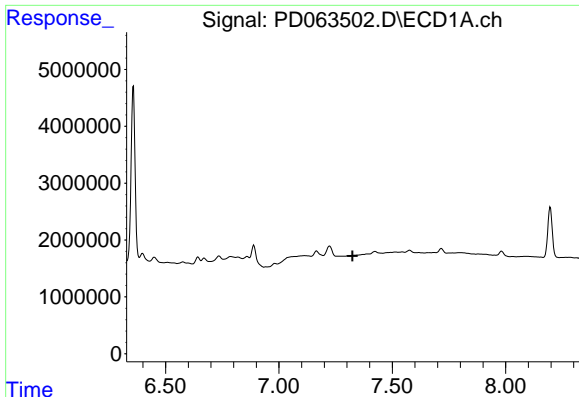
#20 Methoxychlor
 R.T.: 0.000 min
 Exp R.T. : 7.550 min
 Response: 0
 Conc: N.D.



#21 Endrin ketone
 R.T.: 7.166 min
 Delta R.T.: 0.029 min
 Response: 774481
 Conc: 0.44 ng/ml

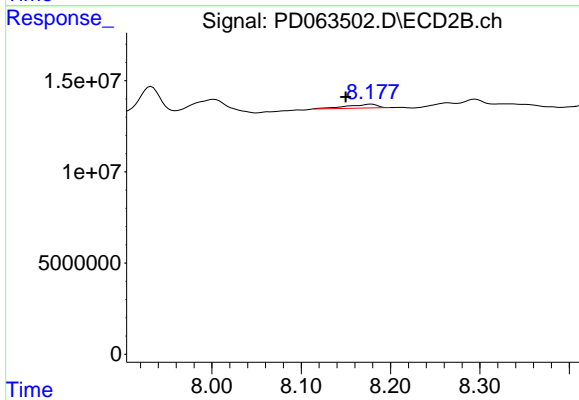


#21 Endrin ketone
 R.T.: 0.000 min
 Exp R.T. : 7.697 min
 Response: 0
 Conc: N.D.

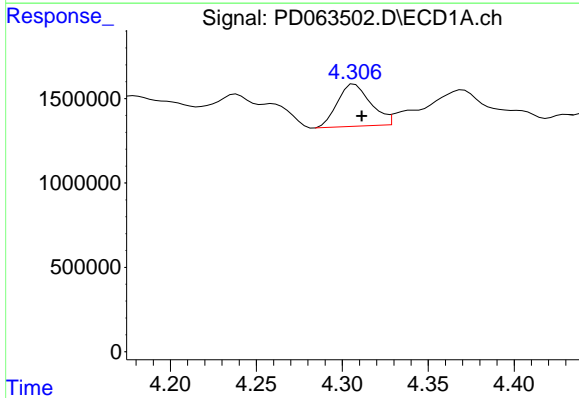


#22 Mirex
 R.T.: 0.000 min
 Exp R.T.: 7.325 min
 Response: 0
 Conc: N.D.

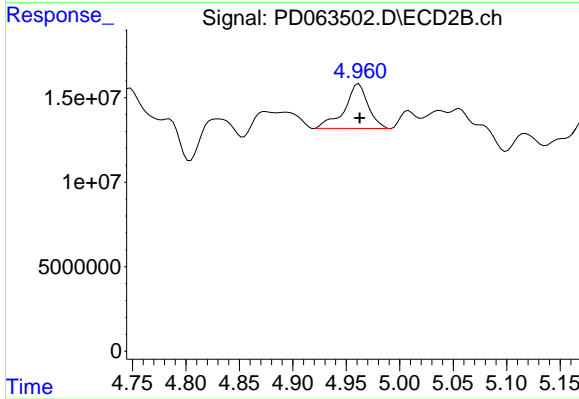
Instrument :
 ECD_D
 ClientSampleId :
 FOUNDATION-EXCAVATION-SAMP



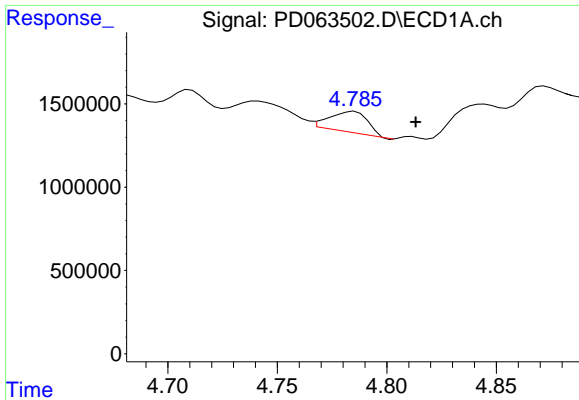
#22 Mirex
 R.T.: 8.178 min
 Delta R.T.: 0.028 min
 Response: 5027916
 Conc: 0.50 ng/ml



#23 Chlordane-1
 R.T.: 4.307 min
 Delta R.T.: -0.004 min
 Response: 3364586
 Conc: 69.31 ng/ml

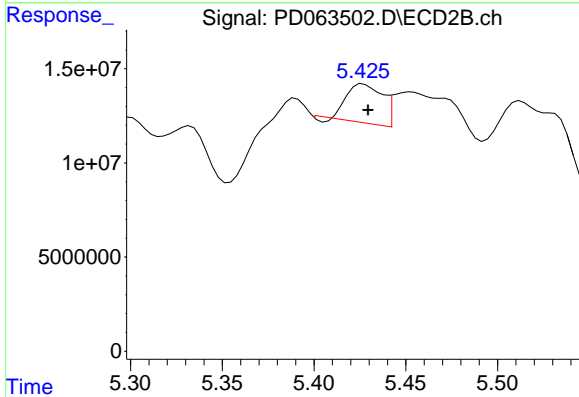


#23 Chlordane-1
 R.T.: 4.962 min
 Delta R.T.: 0.000 min
 Response: 40544815
 Conc: 70.09 ng/ml

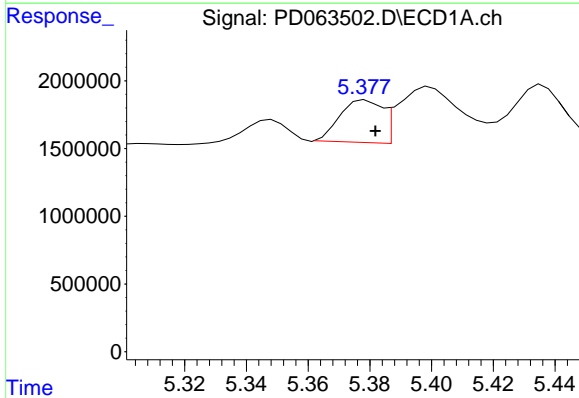


#24 Chlordane-2
 R.T.: 4.785 min
 Delta R.T.: -0.028 min
 Response: 1525008
 Conc: 26.15 ng/ml

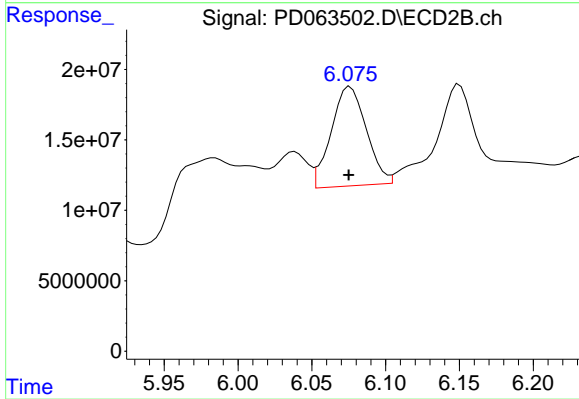
Instrument :
 ECD_D
 ClientSampleId :
 FOUNDATION-EXCAVATION-SAMP



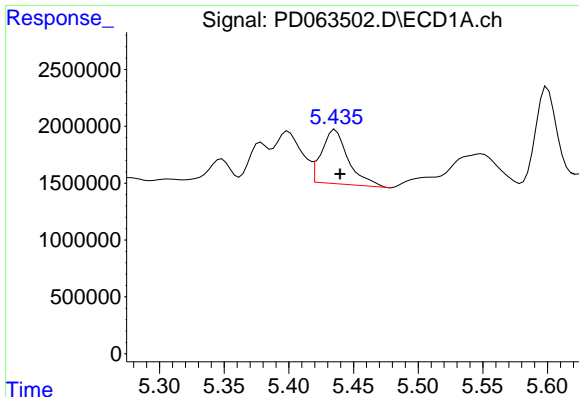
#24 Chlordane-2
 R.T.: 5.427 min
 Delta R.T.: -0.002 min
 Response: 27527474
 Conc: 49.20 ng/ml



#25 Chlordane-3
 R.T.: 5.379 min
 Delta R.T.: -0.003 min
 Response: 2970573
 Conc: 17.46 ng/ml



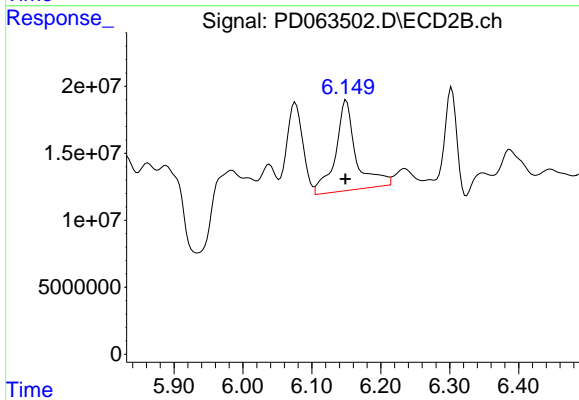
#25 Chlordane-3
 R.T.: 6.076 min
 Delta R.T.: 0.000 min
 Response: 117018801
 Conc: 47.36 ng/ml



#26 Chlordane-4

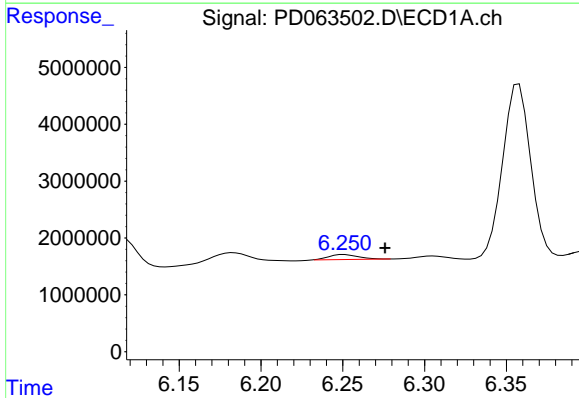
R.T.: 5.436 min
 Delta R.T.: -0.003 min
 Response: 6808057
 Conc: 48.84 ng/ml

Instrument :
 ECD_D
 ClientSampleId :
 FOUNDATION-EXCAVATION-SAMP



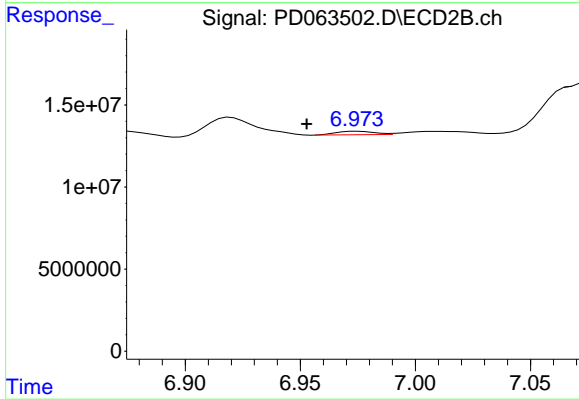
#26 Chlordane-4

R.T.: 6.150 min
 Delta R.T.: 0.000 min
 Response: 140988076
 Conc: 49.33 ng/ml



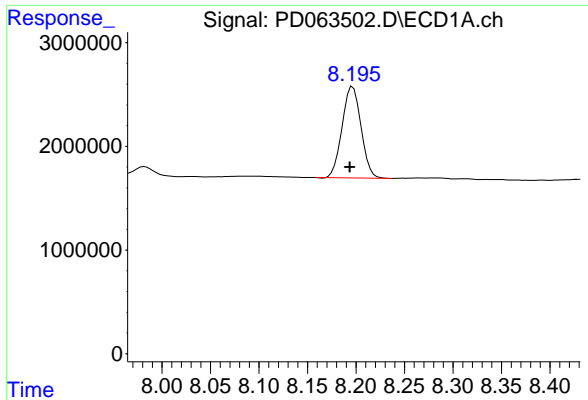
#27 Chlordane-5

R.T.: 6.251 min
 Delta R.T.: -0.025 min
 Response: 1088082
 Conc: 19.66 ng/ml



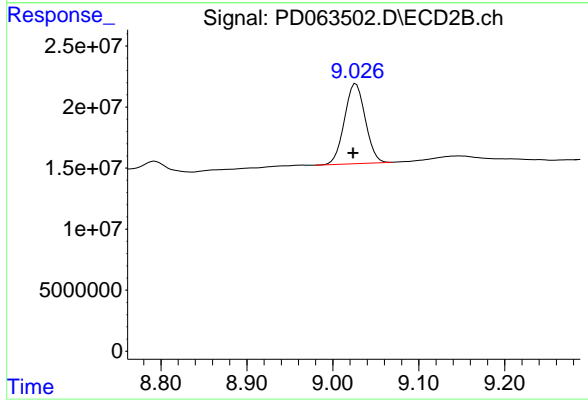
#27 Chlordane-5

R.T.: 6.975 min
 Delta R.T.: 0.022 min
 Response: 2444951
 Conc: 4.68 ng/ml



#28 Decachlorobiphenyl
R.T.: 8.197 min
Delta R.T.: 0.003 min
Response: 11967374
Conc: 7.61 ng/ml

Instrument :
ECD_D
ClientSampleId :
FOUNDATION-EXCAVATION-SAMP



#28 Decachlorobiphenyl
R.T.: 9.027 min
Delta R.T.: 0.003 min
Response: 110040708
Conc: 7.96 ng/ml