

Data Path : Z:\pestpcbsrv\HPCHEM1\ECD_D\Data\PD060721\
 Data File : PD063545.D
 Signal(s) : Signal #1: ECD1A.ch Signal #2: ECD2B.ch
 Acq On : 07 Jun 2021 14:51
 Operator : AR\AJ
 Sample : I.BLK
 Misc :
 ALS Vial : 2 Sample Multiplier: 1

Instrument :
 ECD_D
 ClientSampleId :
 I.BLK

Integration File signal 1: autoint1.e
 Integration File signal 2: autoint2.e
 Quant Time: Jun 08 04:15:33 2021
 Quant Method : Z:\pestpcbsrv\HPCHEM1\ECD_D\Method\PD060221.M
 Quant Title : GC Extractables
 QLast Update : Thu Jun 03 01:33:41 2021
 Response via : Initial Calibration
 Integrator: ChemStation

Volume Inj. : 2 µl
 Signal #1 Phase : ZB-MR2 Signal #2 Phase: ZB-MR1
 Signal #1 Info : 30M x 0.32mm x0.2 Signal #2 Info : 30M x 0.32mm x 0.50µm

	Compound	RT#1	RT#2	Resp#1	Resp#2	ng/ml	ng/ml

System Monitoring Compounds							
1)	SA Tetrachlo...	3.439	3.970	25613131	267.7E6	18.510	19.977
28)	SA Decachlor...	8.195	9.024	27859113	238.0E6	17.714	17.224
Target Compounds							
3)	MA gamma-BHC...	4.165	0.000	2290090	0	1.166	N.D. #
4)	MA Heptachlor	0.000	5.154	0	236823	N.D.	0.012 #
5)	MB Aldrin	0.000	5.455	0	1816096	N.D.	0.093 #
6)	B beta-BHC	4.416	0.000	4196434	0	4.824	N.D. #
7)	B delta-BHC	0.000	5.004f	0	84560423	N.D.	1.323 #
8)	B Heptachlo...	0.000	5.849	0	23098582	N.D.	1.264 #
9)	A Endosulfan I	0.000	6.200	0	2326469	N.D.	0.137 #
10)	B gamma-Chl...	0.000	6.086	0	2111293	N.D.	0.114 #
11)	B alpha-Chl...	0.000	6.160	0	3169356	N.D.	0.178 #
12)	B 4,4'-DDE	0.000	6.301	0	972362	N.D.	0.054 #
13)	MA Dieldrin	0.000	6.462	0	1385647	N.D.	0.077 #
14)	MA Endrin	5.993	6.670	1563280	11117779	0.983	0.723 #
15)	B Endosulfa...	0.000	6.897f	0	8624237	N.D.	0.585 #
16)	A 4,4'-DDD	0.000	6.793	0	13877413	N.D.	0.933 #
17)	MA 4,4'-DDT	0.000	7.086	0	1032175	N.D.	0.069 #
18)	B Endrin al...	6.431	0.000	246695	0	0.207	N.D. #
19)	B Endosulfa...	0.000	7.220	0	10336782	N.D.	0.682 #
20)	A Methoxychlor	0.000	7.548	0	1774462	N.D.	0.240 #
21)	B Endrin ke...	0.000	7.694	0	2058400	N.D.	0.141 #
22)	Mirex	0.000	8.172f	0	672511	N.D.	0.067 #
24)	Chlordane-2	0.000	5.418	0	459416	N.D.	0.821 #
25)	Chlordane-3	0.000	6.086	0	2111293	N.D.	0.855 #
26)	Chlordane-4	0.000	6.160	0	3169356	N.D.	1.109 #
27)	Chlordane-5	0.000	6.972f	0	426191	N.D.	0.816 #

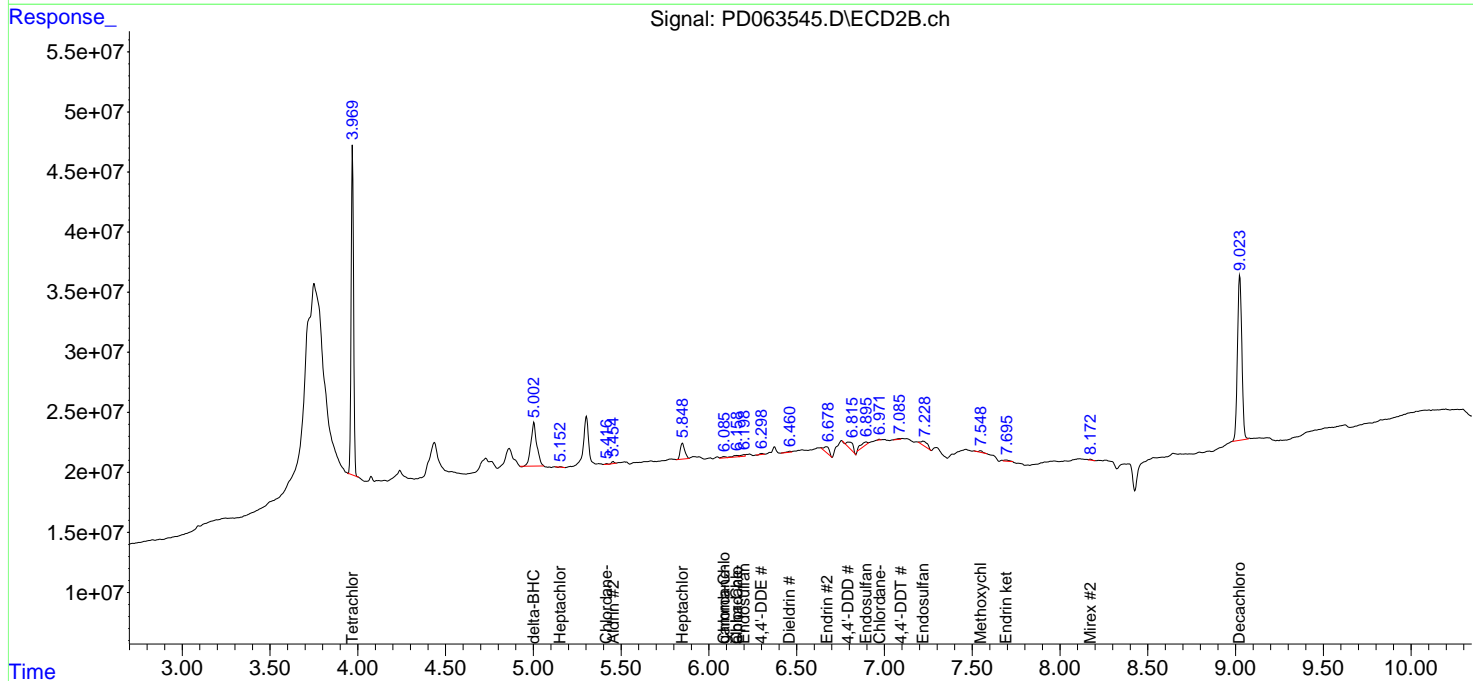
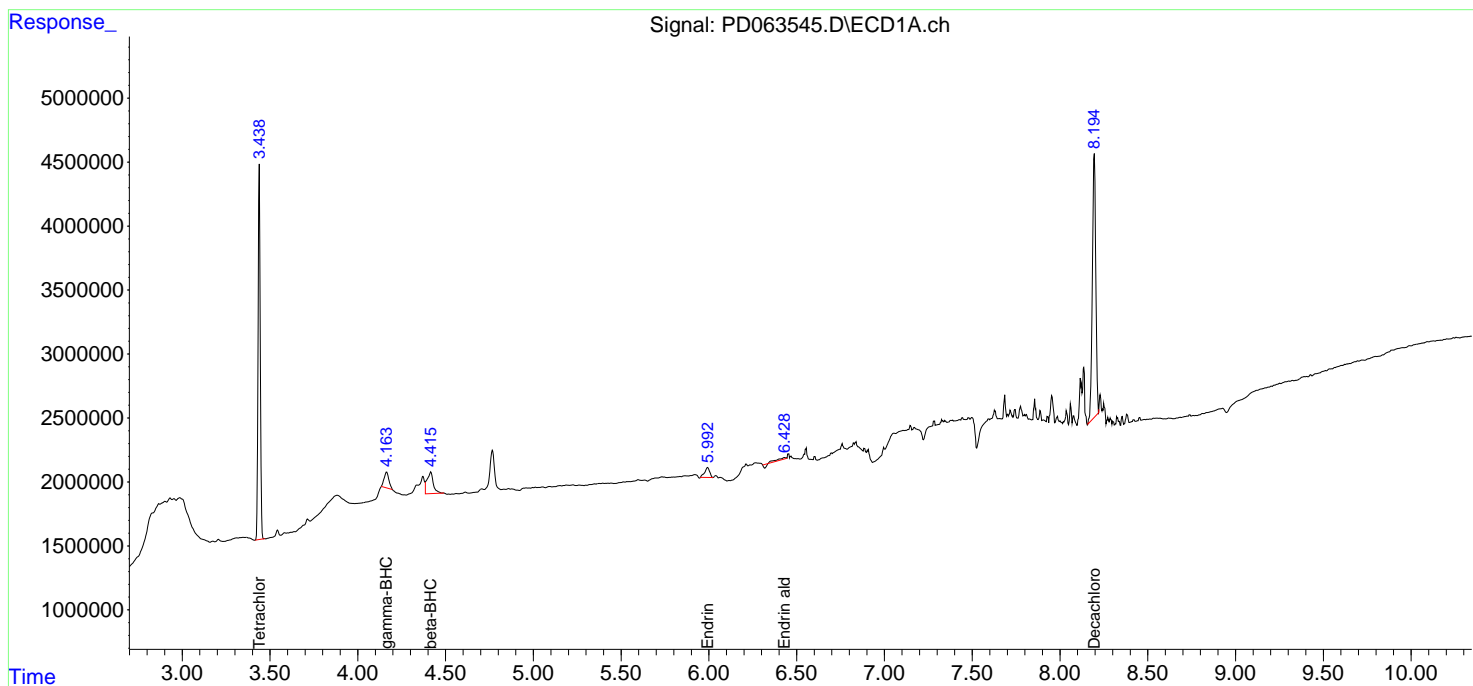
(f)=RT Delta > 1/2 Window (#)=Amounts differ by > 25% (m)=manual int.

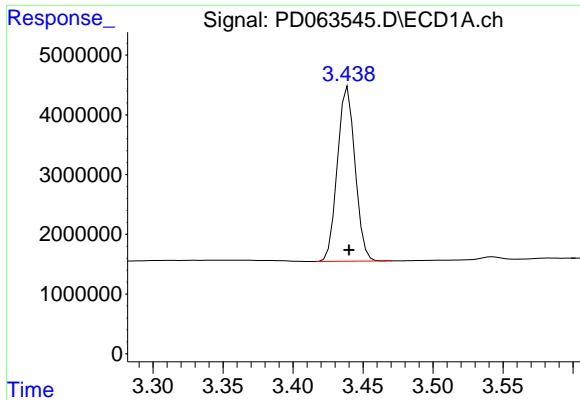
Data Path : Z:\pestpcbsrv\HPCHEM1\ECD_D\Data\PD060721\
 Data File : PD063545.D
 Signal(s) : Signal #1: ECD1A.ch Signal #2: ECD2B.ch
 Acq On : 07 Jun 2021 14:51
 Operator : AR\AJ
 Sample : I.BLK
 Misc :
 ALS Vial : 2 Sample Multiplier: 1

Instrument :
 ECD_D
 ClientSampled :
 I.BLK

Integration File signal 1: autoint1.e
 Integration File signal 2: autoint2.e
 Quant Time: Jun 08 04:15:33 2021
 Quant Method : Z:\pestpcbsrv\HPCHEM1\ECD_D\Method\PD060221.M
 Quant Title : GC Extractables
 QLast Update : Thu Jun 03 01:33:41 2021
 Response via : Initial Calibration
 Integrator: ChemStation

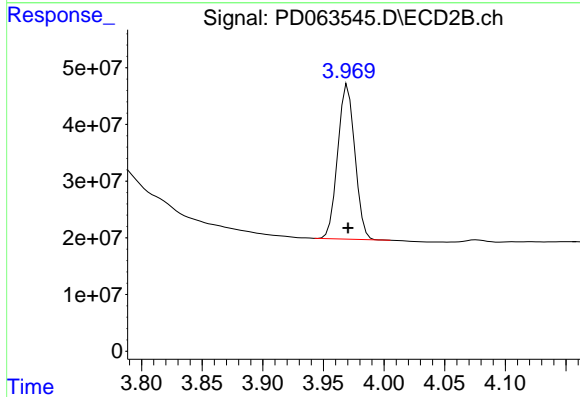
Volume Inj. : 2 µl
 Signal #1 Phase : ZB-MR2 Signal #2 Phase: ZB-MR1
 Signal #1 Info : 30M x 0.32mm x 0.2 Signal #2 Info : 30M x 0.32mm x 0.50µm



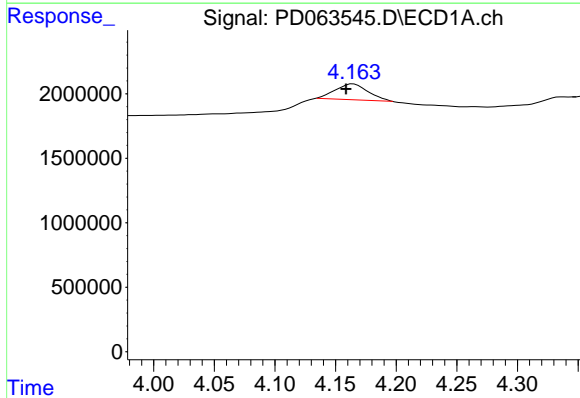


#1 Tetrachloro-m-xylene
 R.T.: 3.439 min
 Delta R.T.: 0.000 min
 Response: 25613131
 Conc: 18.51 ng/ml

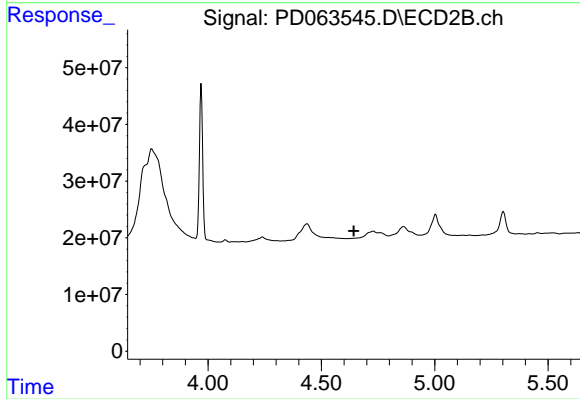
Instrument :
 ECD_D
 ClientSampleId :
 I.BLK



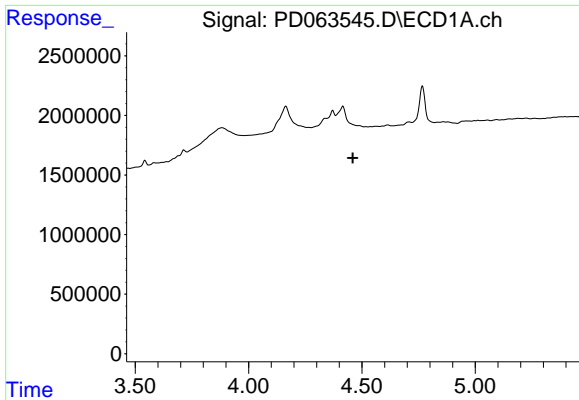
#1 Tetrachloro-m-xylene
 R.T.: 3.970 min
 Delta R.T.: 0.000 min
 Response: 267666249
 Conc: 19.98 ng/ml



#3 gamma-BHC (Lindane)
 R.T.: 4.165 min
 Delta R.T.: 0.006 min
 Response: 2290090
 Conc: 1.17 ng/ml



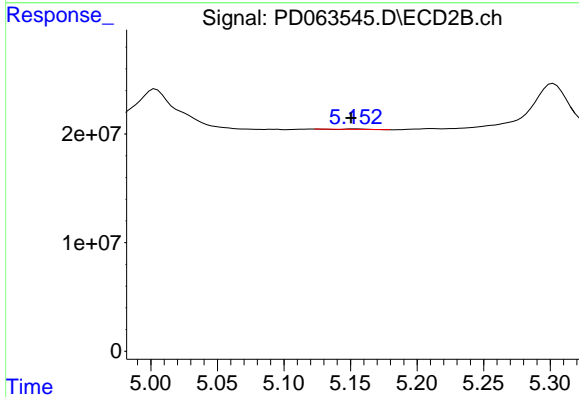
#3 gamma-BHC (Lindane)
 R.T.: 0.000 min
 Exp R.T. : 4.643 min
 Response: 0
 Conc: N.D.



#4 Heptachlor

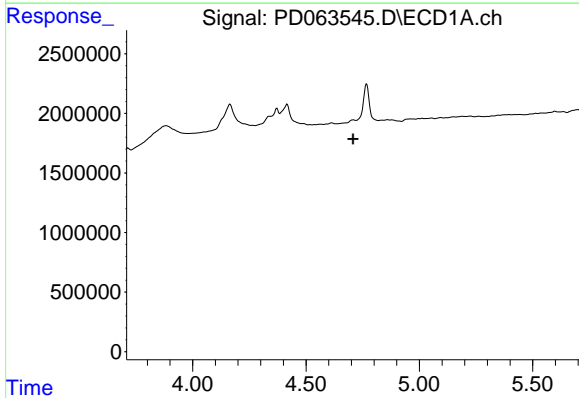
R.T.: 0.000 min
 Exp R.T. : 4.460 min
 Response: 0
 Conc: N.D.

Instrument :
 ECD_D
 ClientSampleId :
 I.BLK



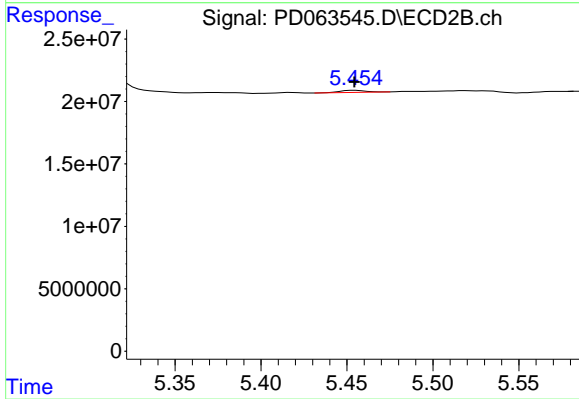
#4 Heptachlor

R.T.: 5.154 min
 Delta R.T.: 0.003 min
 Response: 236823
 Conc: 0.01 ng/ml



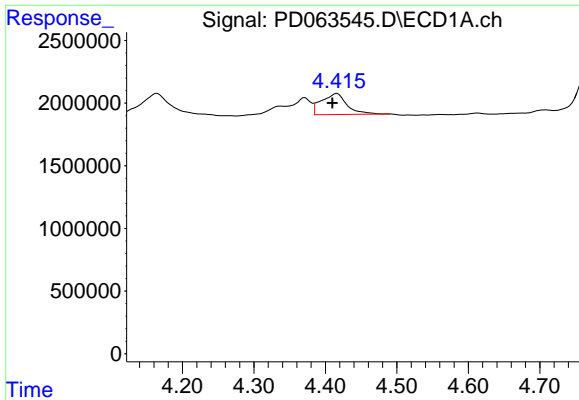
#5 Aldrin

R.T.: 0.000 min
 Exp R.T. : 4.707 min
 Response: 0
 Conc: N.D.



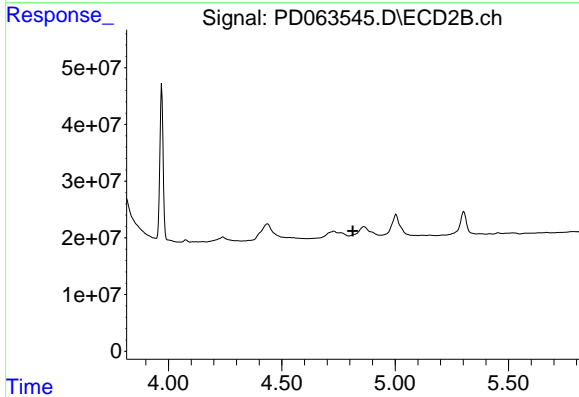
#5 Aldrin

R.T.: 5.455 min
 Delta R.T.: 0.000 min
 Response: 1816096
 Conc: 0.09 ng/ml

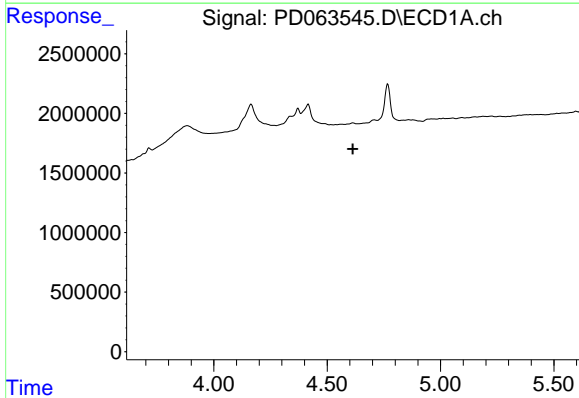


#6 beta-BHC
 R.T.: 4.416 min
 Delta R.T.: 0.007 min
 Response: 4196434
 Conc: 4.82 ng/ml

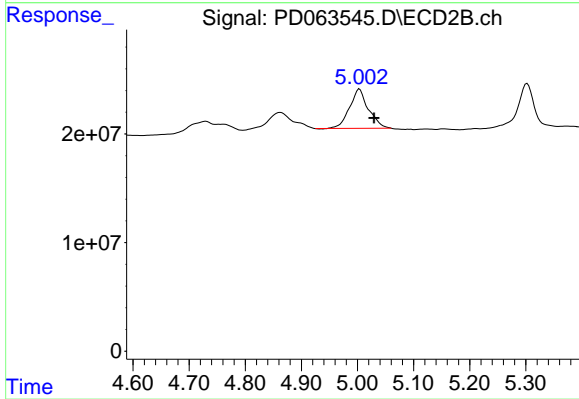
Instrument :
 ECD_D
 ClientSampled :
 I.BLK



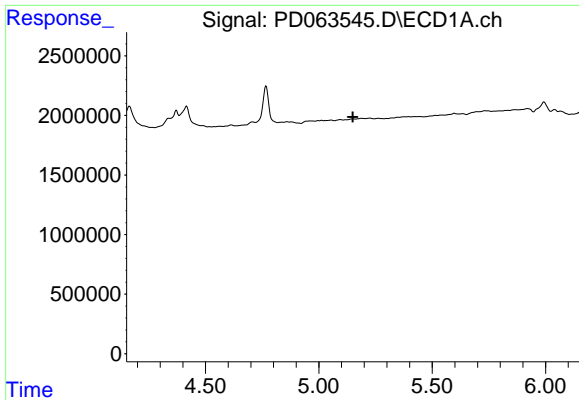
#6 beta-BHC
 R.T.: 0.000 min
 Exp R.T. : 4.814 min
 Response: 0
 Conc: N.D.



#7 delta-BHC
 R.T.: 0.000 min
 Exp R.T. : 4.613 min
 Response: 0
 Conc: N.D.

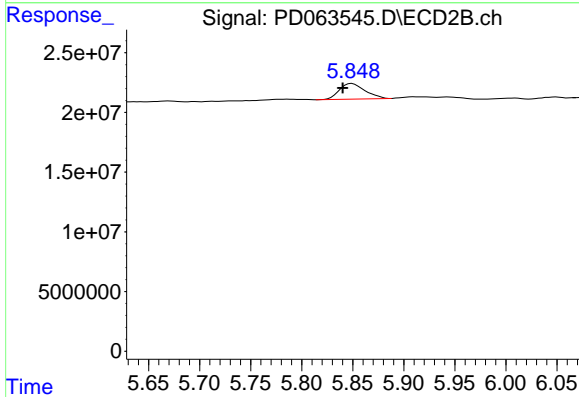


#7 delta-BHC
 R.T.: 5.004 min
 Delta R.T.: -0.026 min
 Response: 84560423
 Conc: 1.32 ng/ml

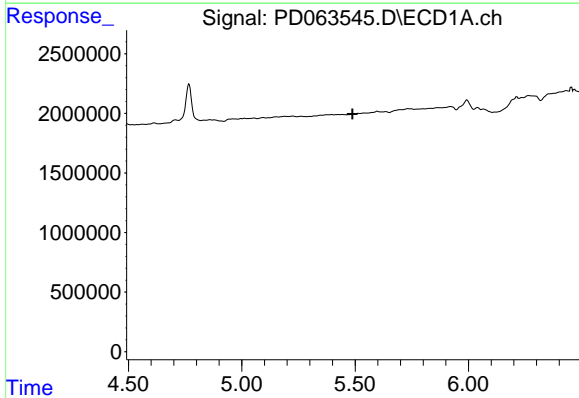


#8 Heptachlor epoxide
 R.T.: 0.000 min
 Exp R.T. : 5.150 min
 Response: 0
 Conc: N.D.

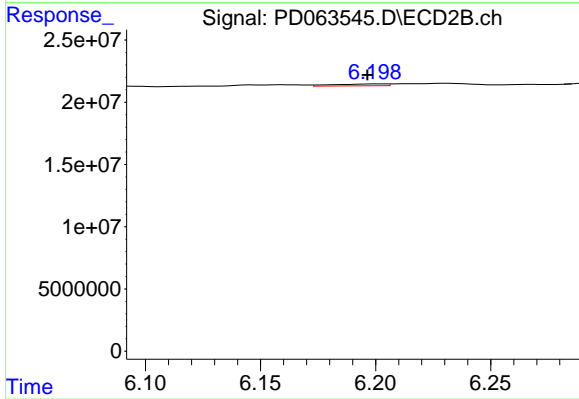
Instrument :
 ECD_D
 ClientSampleId :
 I.BLK



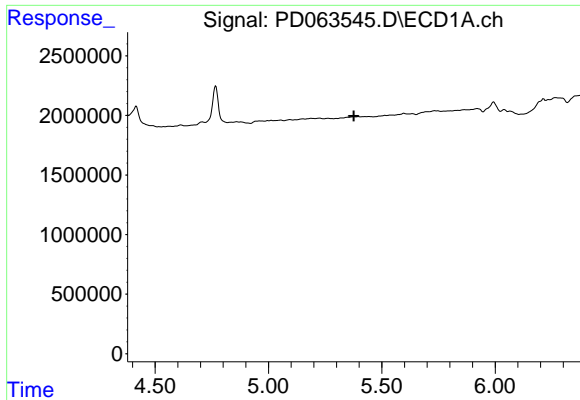
#8 Heptachlor epoxide
 R.T.: 5.849 min
 Delta R.T.: 0.009 min
 Response: 23098582
 Conc: 1.26 ng/ml



#9 Endosulfan I
 R.T.: 0.000 min
 Exp R.T. : 5.489 min
 Response: 0
 Conc: N.D.

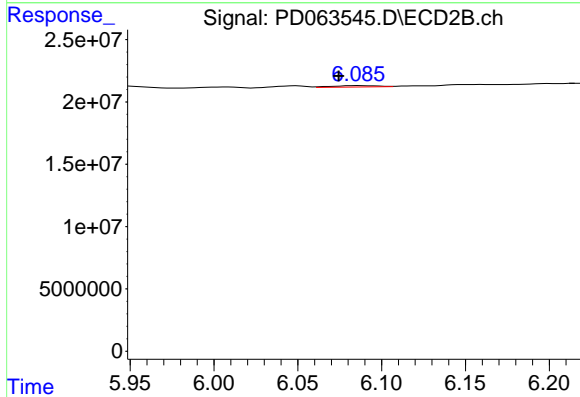


#9 Endosulfan I
 R.T.: 6.200 min
 Delta R.T.: 0.004 min
 Response: 2326469
 Conc: 0.14 ng/ml

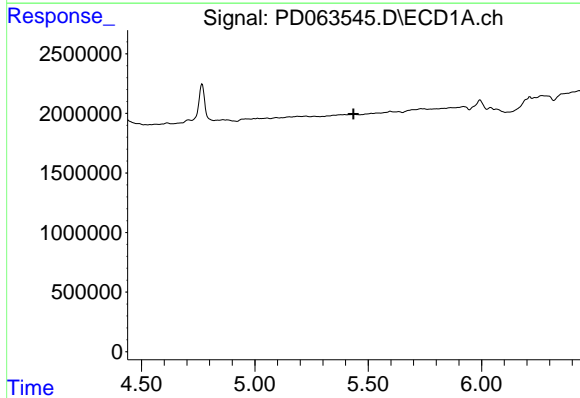


#10 gamma-Chlordane
 R.T.: 0.000 min
 Exp R.T.: 5.377 min
 Response: 0
 Conc: N.D.

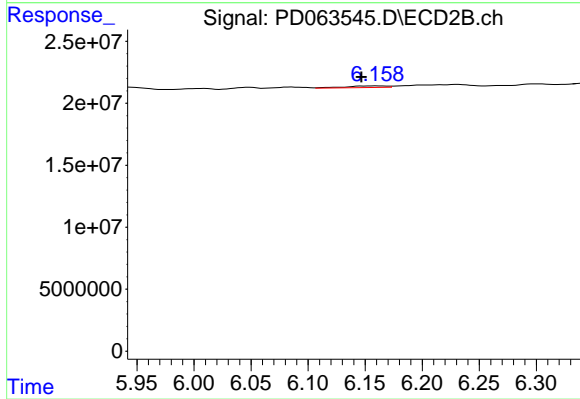
Instrument :
 ECD_D
 ClientSampleId :
 I.BLK



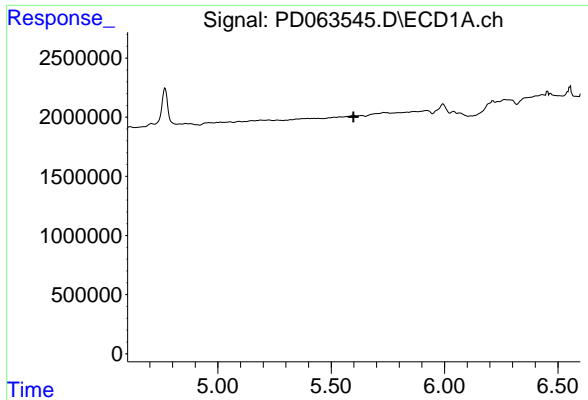
#10 gamma-Chlordane
 R.T.: 6.086 min
 Delta R.T.: 0.011 min
 Response: 2111293
 Conc: 0.11 ng/ml



#11 alpha-Chlordane
 R.T.: 0.000 min
 Exp R.T.: 5.436 min
 Response: 0
 Conc: N.D.

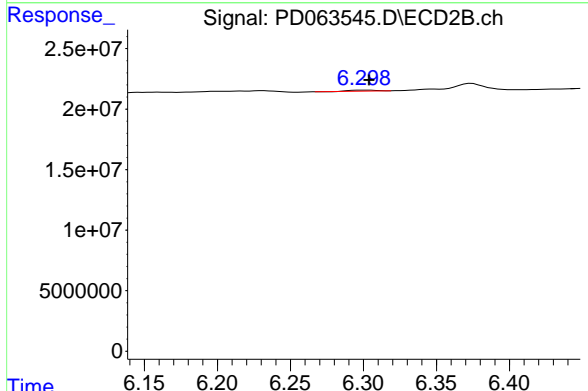


#11 alpha-Chlordane
 R.T.: 6.160 min
 Delta R.T.: 0.014 min
 Response: 3169356
 Conc: 0.18 ng/ml

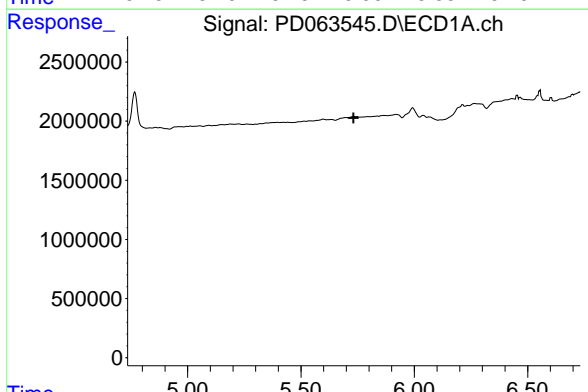


#12 4,4'-DDE
 R.T.: 0.000 min
 Exp R.T.: 5.599 min
 Response: 0
 Conc: N.D.

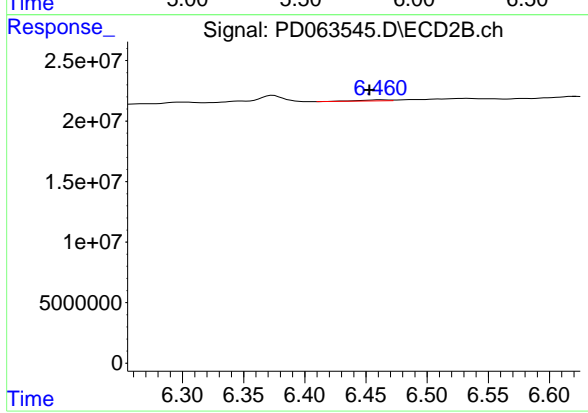
Instrument :
 ECD_D
 ClientSampleId :
 I.BLK



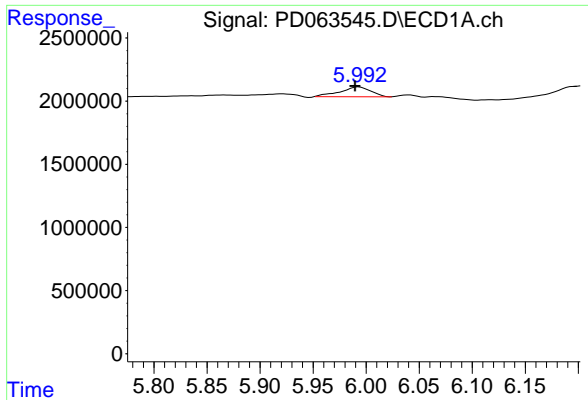
#12 4,4'-DDE
 R.T.: 6.301 min
 Delta R.T.: -0.003 min
 Response: 972362
 Conc: 0.05 ng/ml



#13 Dieldrin
 R.T.: 0.000 min
 Exp R.T.: 5.732 min
 Response: 0
 Conc: N.D.

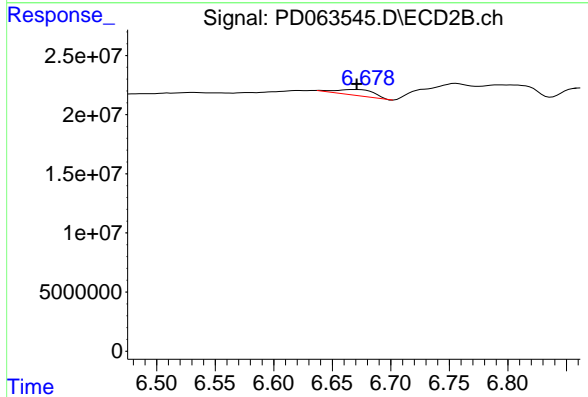


#13 Dieldrin
 R.T.: 6.462 min
 Delta R.T.: 0.009 min
 Response: 1385647
 Conc: 0.08 ng/ml

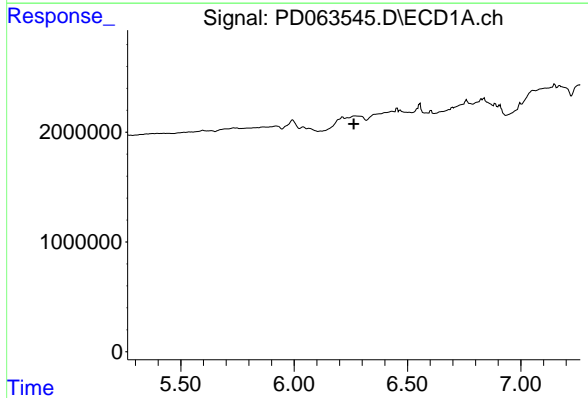


#14 Endrin
 R.T.: 5.993 min
 Delta R.T.: 0.003 min
 Response: 1563280
 Conc: 0.98 ng/ml

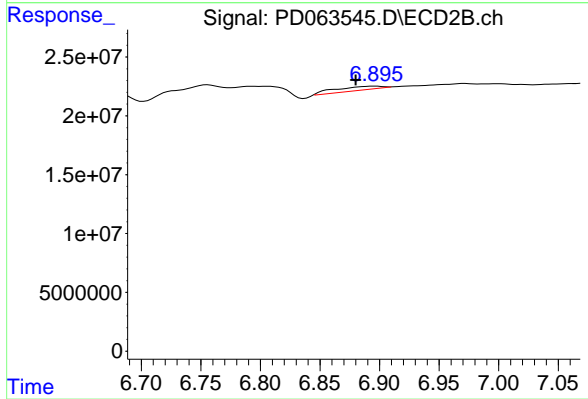
Instrument :
 ECD_D
 ClientSampled :
 I.BLK



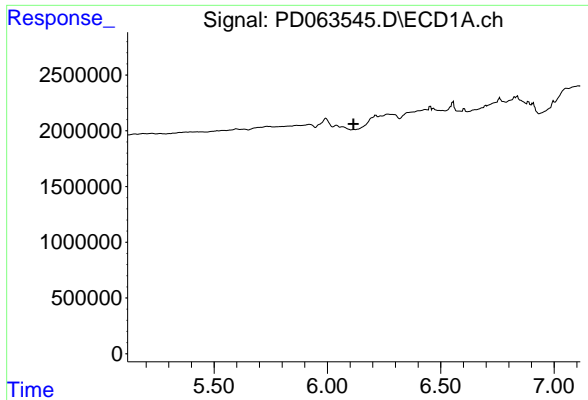
#14 Endrin
 R.T.: 6.670 min
 Delta R.T.: -0.001 min
 Response: 11117779
 Conc: 0.72 ng/ml



#15 Endosulfan II
 R.T.: 0.000 min
 Exp R.T. : 6.263 min
 Response: 0
 Conc: N.D.

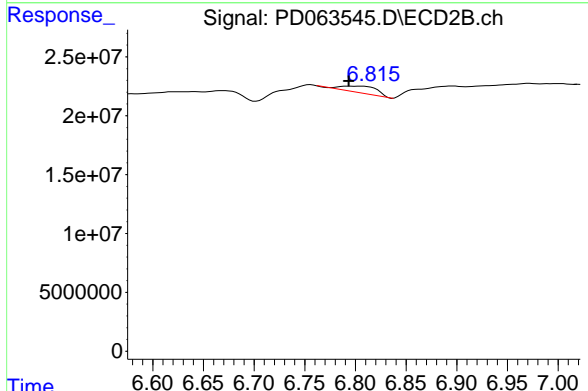


#15 Endosulfan II
 R.T.: 6.897 min
 Delta R.T.: 0.017 min
 Response: 8624237
 Conc: 0.58 ng/ml

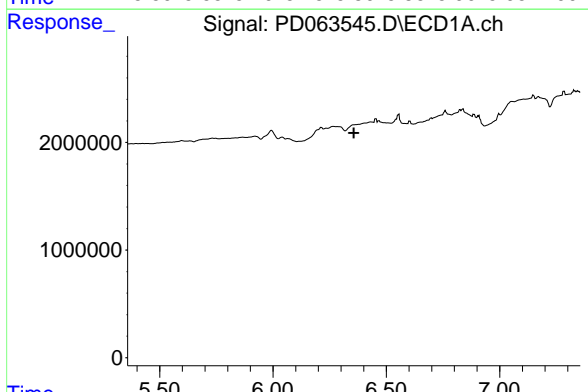


#16 4,4'-DDD
 R.T.: 0.000 min
 Exp R.T.: 6.115 min
 Response: 0
 Conc: N.D.

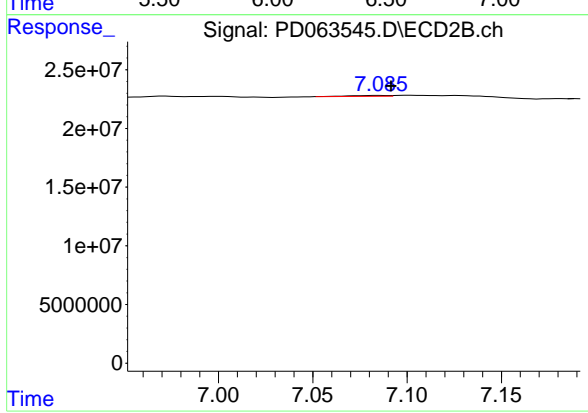
Instrument :
 ECD_D
 ClientSampleId :
 I.BLK



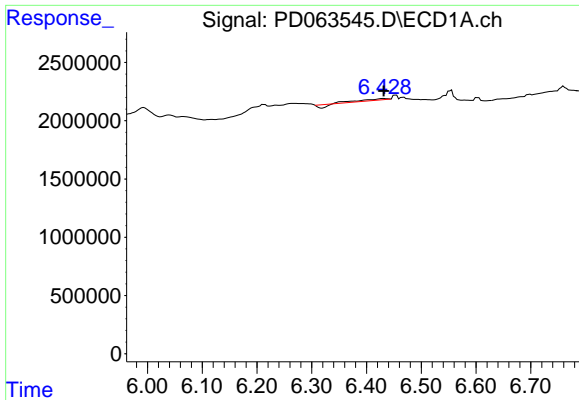
#16 4,4'-DDD
 R.T.: 6.793 min
 Delta R.T.: 0.000 min
 Response: 13877413
 Conc: 0.93 ng/ml



#17 4,4'-DDT
 R.T.: 0.000 min
 Exp R.T.: 6.356 min
 Response: 0
 Conc: N.D.

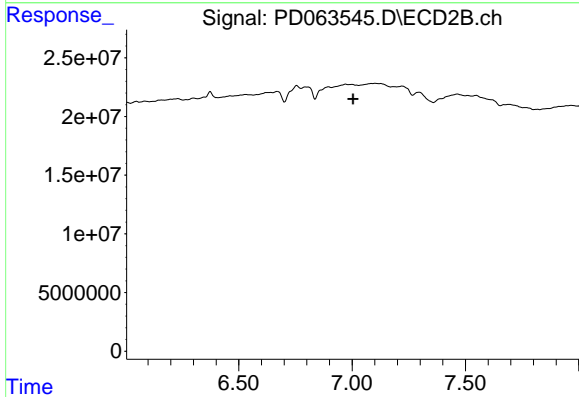


#17 4,4'-DDT
 R.T.: 7.086 min
 Delta R.T.: -0.005 min
 Response: 1032175
 Conc: 0.07 ng/ml

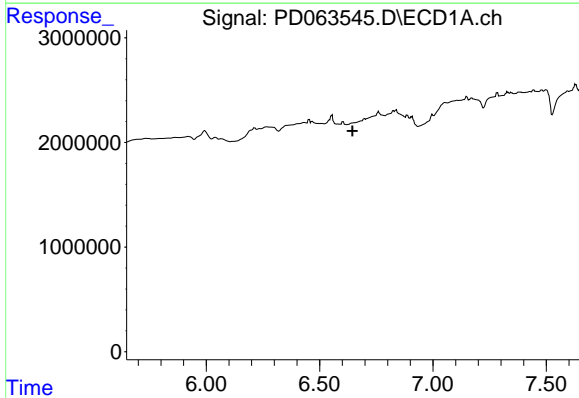


#18 Endrin aldehyde
 R.T.: 6.431 min
 Delta R.T.: 0.000 min
 Response: 246695
 Conc: 0.21 ng/ml

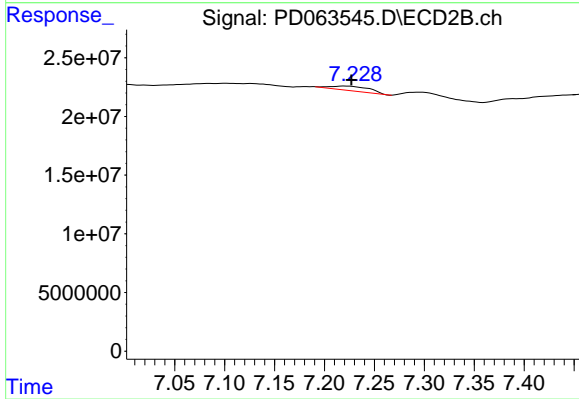
Instrument :
 ECD_D
 ClientSampled :
 I.BLK



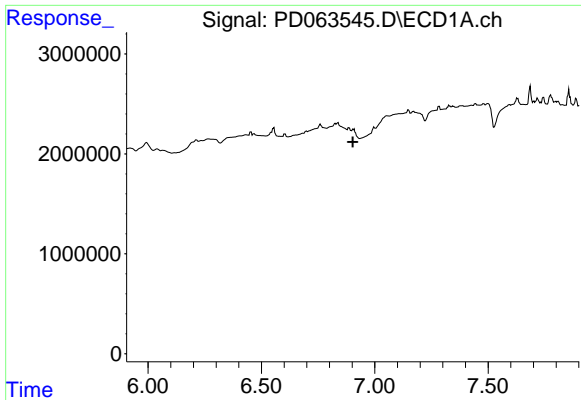
#18 Endrin aldehyde
 R.T.: 0.000 min
 Exp R.T. : 7.004 min
 Response: 0
 Conc: N.D.



#19 Endosulfan Sulfate
 R.T.: 0.000 min
 Exp R.T. : 6.645 min
 Response: 0
 Conc: N.D.



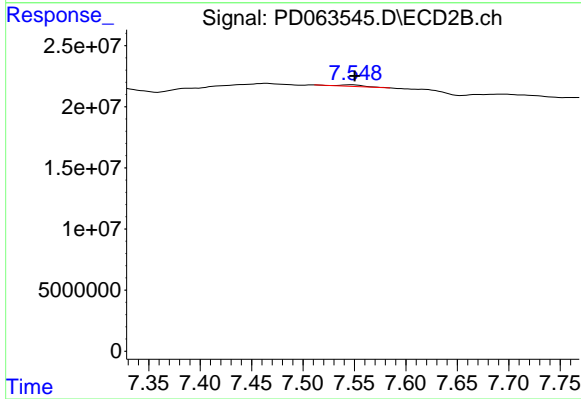
#19 Endosulfan Sulfate
 R.T.: 7.220 min
 Delta R.T.: -0.007 min
 Response: 10336782
 Conc: 0.68 ng/ml



#20 Methoxychlor

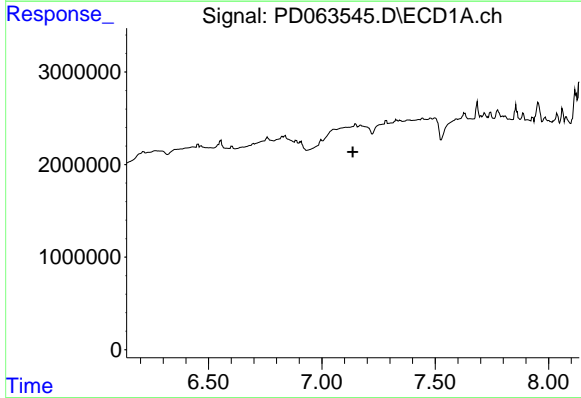
R.T.: 0.000 min
 Exp R.T. : 6.903 min
 Response: 0
 Conc: N.D.

Instrument :
 ECD_D
 ClientSampled :
 I.BLK



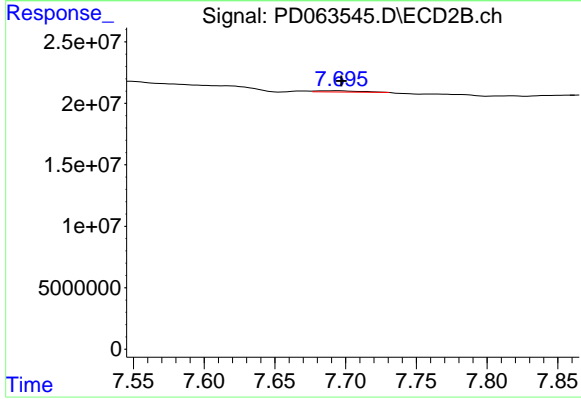
#20 Methoxychlor

R.T.: 7.548 min
 Delta R.T.: -0.002 min
 Response: 1774462
 Conc: 0.24 ng/ml



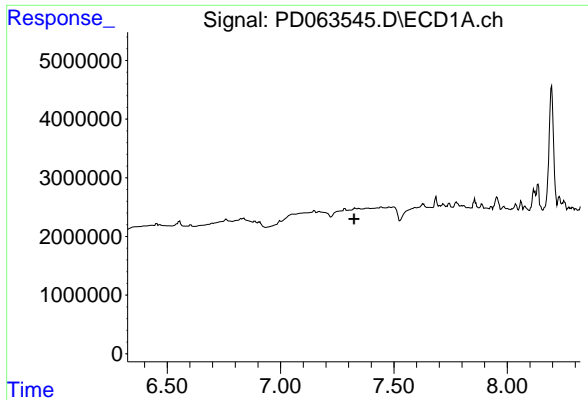
#21 Endrin ketone

R.T.: 0.000 min
 Exp R.T. : 7.137 min
 Response: 0
 Conc: N.D.



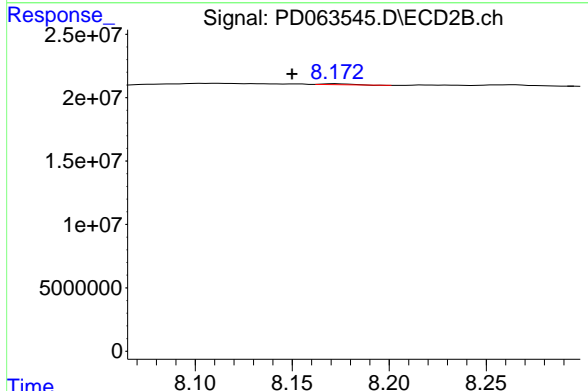
#21 Endrin ketone

R.T.: 7.694 min
 Delta R.T.: -0.002 min
 Response: 2058400
 Conc: 0.14 ng/ml

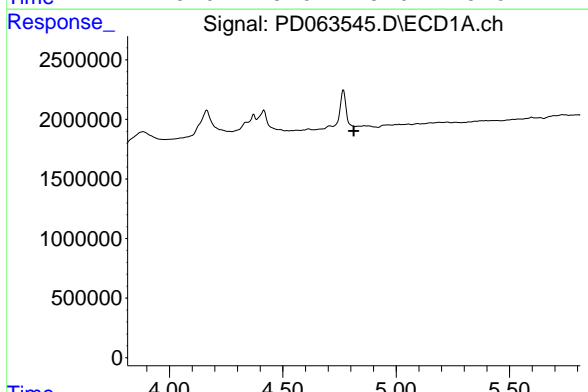


#22 Mirex
 R.T.: 0.000 min
 Exp R.T.: 7.325 min
 Response: 0
 Conc: N.D.

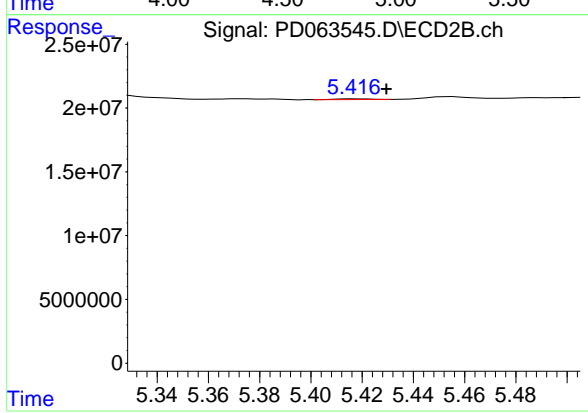
Instrument :
 ECD_D
 ClientSampled :
 I.BLK



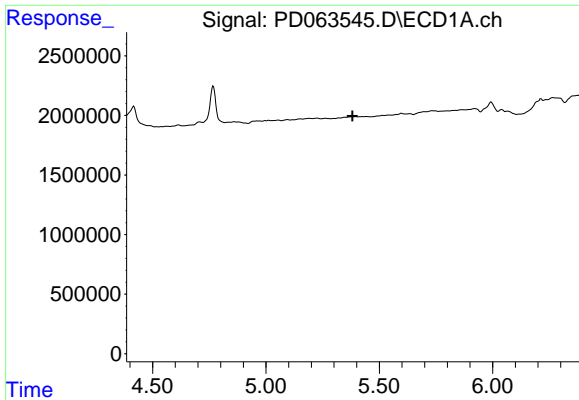
#22 Mirex
 R.T.: 8.172 min
 Delta R.T.: 0.022 min
 Response: 672511
 Conc: 0.07 ng/ml



#24 Chlordane-2
 R.T.: 0.000 min
 Exp R.T.: 4.813 min
 Response: 0
 Conc: N.D.



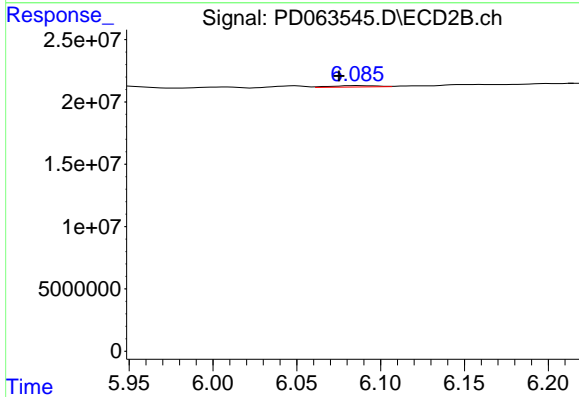
#24 Chlordane-2
 R.T.: 5.418 min
 Delta R.T.: -0.012 min
 Response: 459416
 Conc: 0.82 ng/ml



#25 Chlordane-3

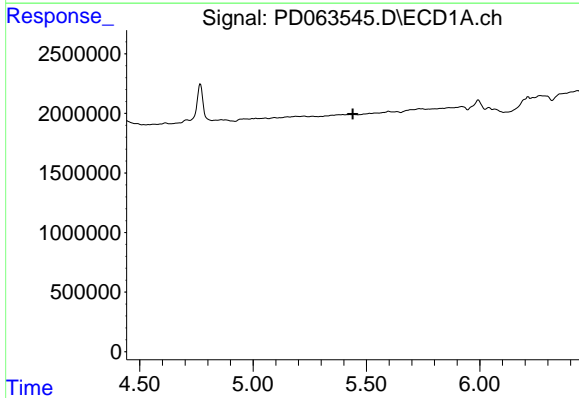
R.T.: 0.000 min
 Exp R.T.: 5.382 min
 Response: 0
 Conc: N.D.

Instrument :
 ECD_D
 ClientSampleId :
 I.BLK



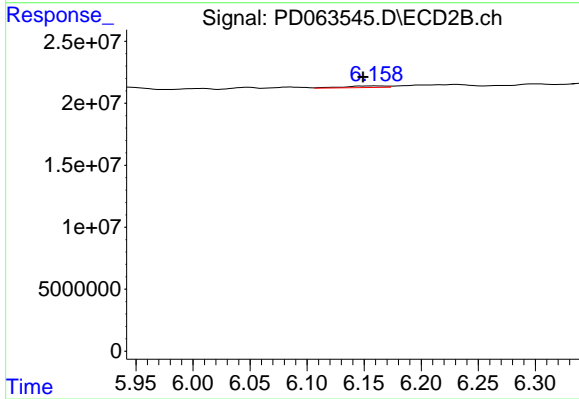
#25 Chlordane-3

R.T.: 6.086 min
 Delta R.T.: 0.010 min
 Response: 2111293
 Conc: 0.85 ng/ml



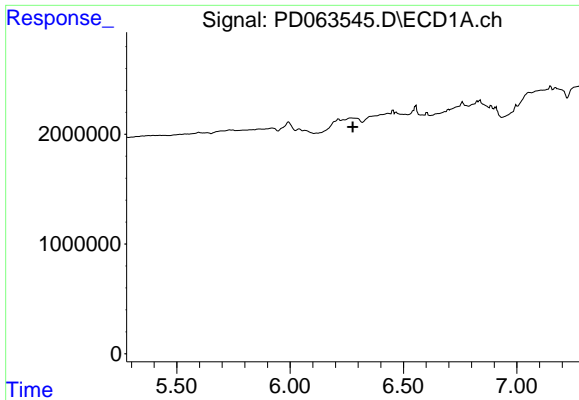
#26 Chlordane-4

R.T.: 0.000 min
 Exp R.T.: 5.439 min
 Response: 0
 Conc: N.D.



#26 Chlordane-4

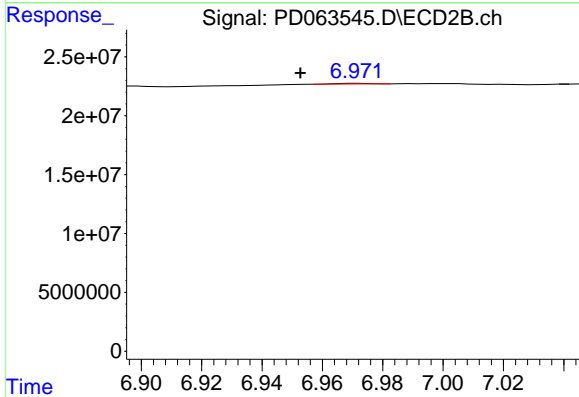
R.T.: 6.160 min
 Delta R.T.: 0.011 min
 Response: 3169356
 Conc: 1.11 ng/ml



#27 Chlordane-5

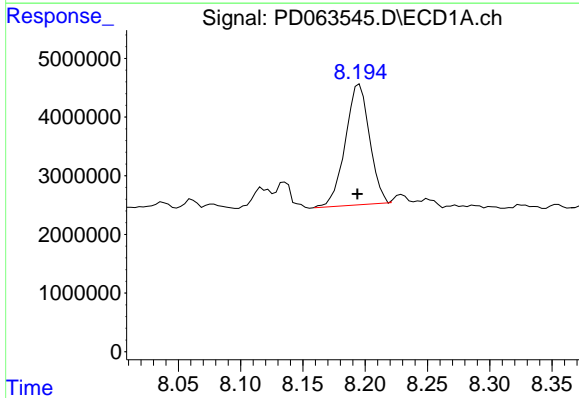
R.T.: 0.000 min
 Exp R.T.: 6.276 min
 Response: 0
 Conc: N.D.

Instrument :
 ECD_D
 ClientSampleId :
 I.BLK



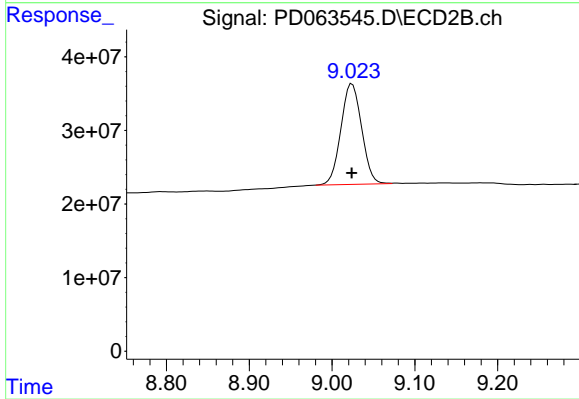
#27 Chlordane-5

R.T.: 6.972 min
 Delta R.T.: 0.019 min
 Response: 426191
 Conc: 0.82 ng/ml



#28 Decachlorobiphenyl

R.T.: 8.195 min
 Delta R.T.: 0.002 min
 Response: 27859113
 Conc: 17.71 ng/ml



#28 Decachlorobiphenyl

R.T.: 9.024 min
 Delta R.T.: 0.000 min
 Response: 238007403
 Conc: 17.22 ng/ml