

Data Path : Z:\pestpcbsrv\HPCHEM1\ECD_D\Data\PD060724\
 Data File : PD083472.D
 Signal(s) : Signal #1: ECD1A.ch Signal #2: ECD2B.ch
 Acq On : 06 Jun 2024 20:45
 Operator : AR\AJ
 Sample : P2739-02
 Misc :
 ALS Vial : 23 Sample Multiplier: 1

Integration File signal 1: autoint1.e
 Integration File signal 2: autoint2.e
 Quant Time: Jun 07 08:13:10 2024
 Quant Method : Z:\pestpcbsrv\HPCHEM1\ECD_D\Method\PD060724CLP.M
 Quant Title : GC Extractables
 QLast Update : Fri Jun 07 04:03:14 2024
 Response via : Initial Calibration
 Integrator: ChemStation

Volume Inj. : 1 µl
 Signal #1 Phase : ZB-MR2 Signal #2 Phase: ZB-MR2
 Signal #1 Info : 30M x 0.32mm x0.5 Signal #2 Info : 30M x 0.32mm x 0.25µm

Compound	RT#1	RT#2	Resp#1	Resp#2	ng/ml	ng/ml

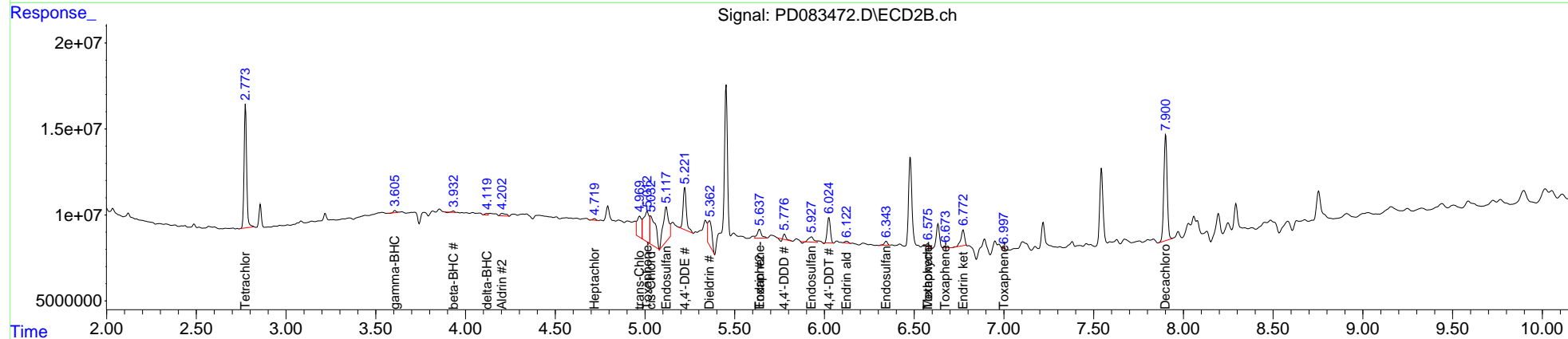
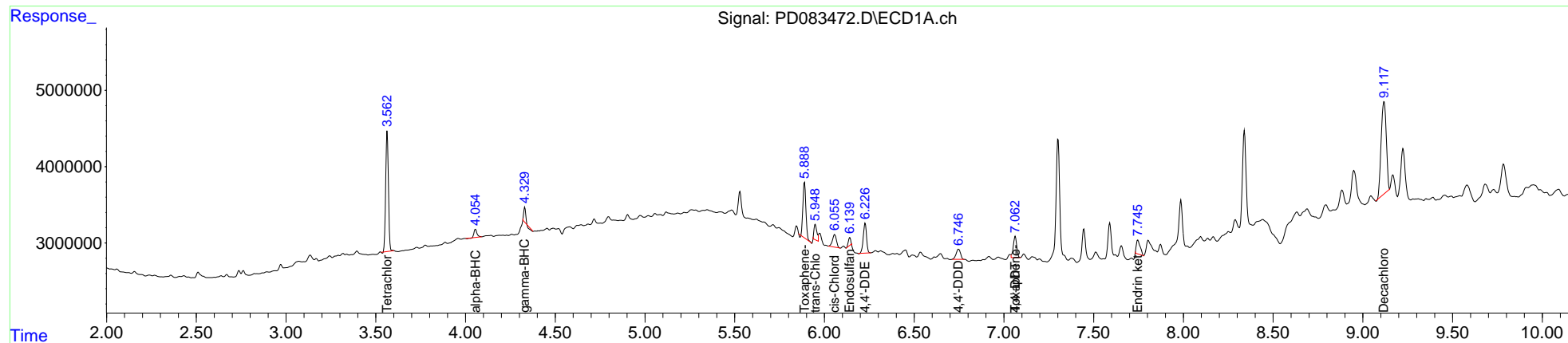
System Monitoring Compounds						
1) SA Tetrachlo...	3.564	2.774	16681178	71576923	12.779	13.131
27) SA Decachlor...	9.118	7.902	24067213	79750440	12.377	13.134
Target Compounds						
2) A alpha-BHC	4.056f	3.265	1238501	215786	0.558	<MDL #
3) MA gamma-BHC...	4.330	3.606	1268145	1141580	0.583	0.146 #
4) MA Heptachlor	0.000	3.933	0	708560	N.D.	<MDL
5) MB Aldrin	0.000	4.203	0	3205677	N.D.	0.415
6) B beta-BHC	0.000	3.933f	0	708560	N.D.	0.199
7) B delta-BHC	0.000	4.119	0	1025423	N.D.	0.120
8) B Heptachlo...	0.000	4.719	0	964475	N.D.	0.132
9) A Endosulfan I	6.141f	5.119	831353	41407124	0.425	6.264 #
10) B trans-Chl...	5.949	4.971	2209195	21297725	1.085	2.932 #
11) B cis-Chlor...	6.057	5.032	2538892	38080774	1.219	5.172 #
12) B 4,4'-DDE	6.227	5.222	4959123	31496713	2.391	4.432 #
13) MA Dieldrin	0.000	5.360	0	23839208	N.D.	3.272
14) MA Endrin	0.000	5.639	0	8346072	N.D.	1.290
15) B Endosulfa...	0.000	5.928	0	5625202	N.D.	0.886
16) A 4,4'-DDD	6.748	5.777	2280687	1901398	1.556	0.337 #
17) MA 4,4'-DDT	7.063	6.025	3626950	17525504	2.408	3.096 #
18) B Endrin al...	0.000	6.123	0	1440150	N.D.	0.301
19) B Endosulfa...	0.000	6.344	0	3214009	N.D.	0.520
20) A Methoxychlor	0.000	6.575	0	2431387	N.D.	0.837
21) B Endrin ke...	7.746f	6.773f	2693273	12678015	1.445	1.886 #
22) Toxaphene-1	5.889	5.012	8251834	38346054	1362.807	1059.017
23) Toxaphene-2	0.000	5.639f	0	8346072	N.D.	209.584
24) Toxaphene-3	7.063	6.575	3626950	2431387	74.598	19.020 #
25) Toxaphene-4	0.000	6.674f	0	947690	N.D.	5.301
26) Toxaphene-5	0.000	6.998	0	640234	N.D.	9.103

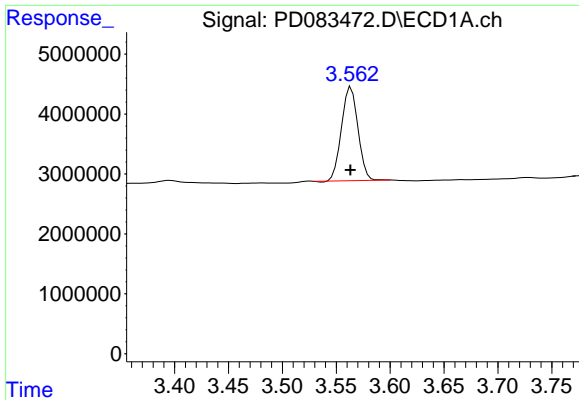
(f)=RT Delta > 1/2 Window (#)=Amounts differ by > 25% (m)=manual int.

Data Path : Z:\pestpcbsrv\HPCHEM1\ECD_D\Data\PD060724\
 Data File : PD083472.D
 Signal(s) : Signal #1: ECD1A.ch Signal #2: ECD2B.ch
 Acq On : 06 Jun 2024 20:45
 Operator : AR\AJ
 Sample : P2739-02
 Misc :
 ALS Vial : 23 Sample Multiplier: 1

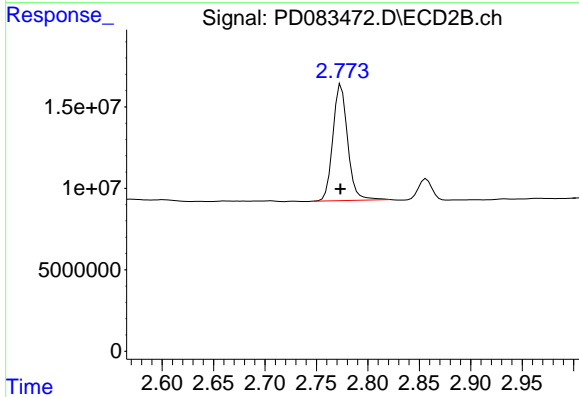
Integration File signal 1: autoint1.e
 Integration File signal 2: autoint2.e
 Quant Time: Jun 07 08:13:10 2024
 Quant Method : Z:\pestpcbsrv\HPCHEM1\ECD_D\Method\PD060724CLP.M
 Quant Title : GC Extractables
 QLast Update : Fri Jun 07 04:03:14 2024
 Response via : Initial Calibration
 Integrator: ChemStation

Volume Inj. : 1 µl
 Signal #1 Phase : ZB-MR1 Signal #2 Phase: ZB-MR2
 Signal #1 Info : 30M x 0.32mm x0.5 Signal #2 Info : 30M x 0.32mm x 0.25µm

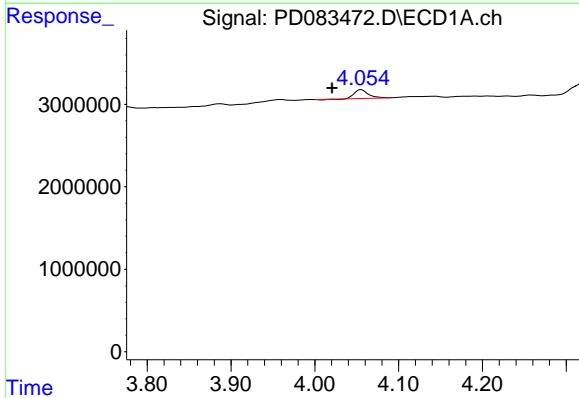




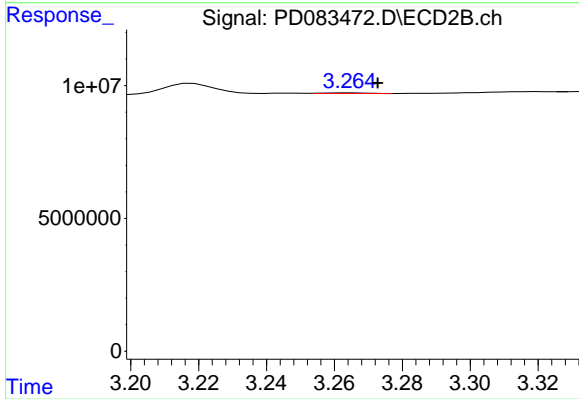
#1 Tetrachloro-m-xylene
 R.T.: 3.564 min
 Delta R.T.: 0.000 min
 Response: 16681178
 Conc: 12.78 ng/ml



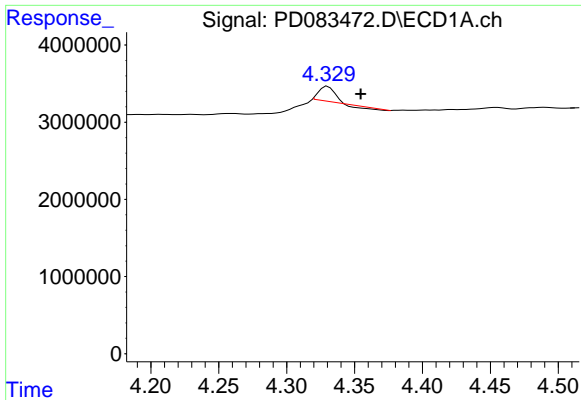
#1 Tetrachloro-m-xylene
 R.T.: 2.774 min
 Delta R.T.: 0.000 min
 Response: 71576923
 Conc: 13.13 ng/ml



#2 alpha-BHC
 R.T.: 4.056 min
 Delta R.T.: 0.035 min
 Response: 1238501
 Conc: 0.56 ng/ml

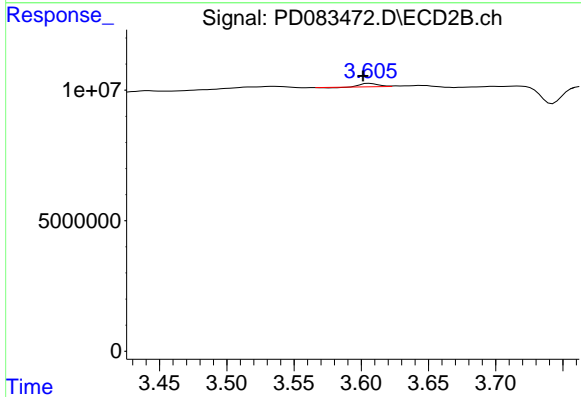


#2 alpha-BHC
 R.T.: 3.265 min
 Delta R.T.: -0.008 min
 Response: 215786
 Conc: N.D.



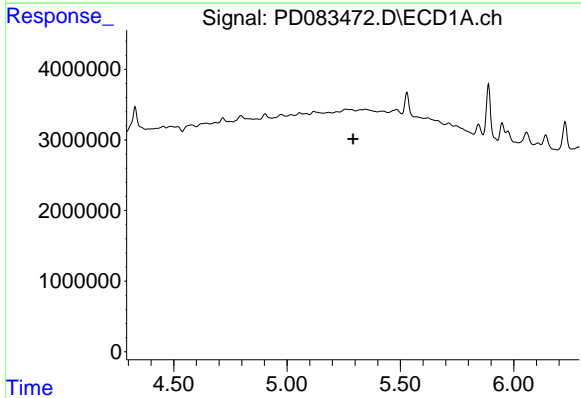
#3 gamma-BHC (Lindane)

R.T.: 4.330 min
 Delta R.T.: -0.024 min
 Response: 1268145
 Conc: 0.58 ng/ml



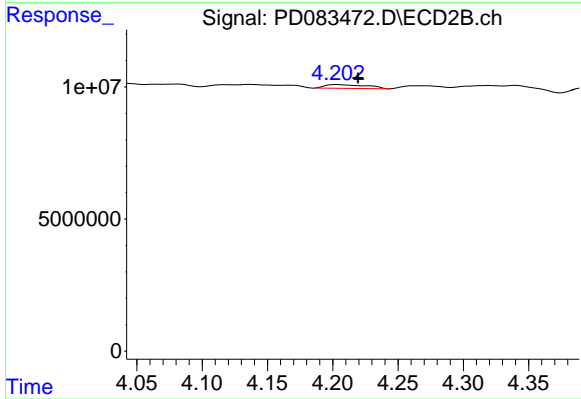
#3 gamma-BHC (Lindane)

R.T.: 3.606 min
 Delta R.T.: 0.005 min
 Response: 1141580
 Conc: 0.15 ng/ml



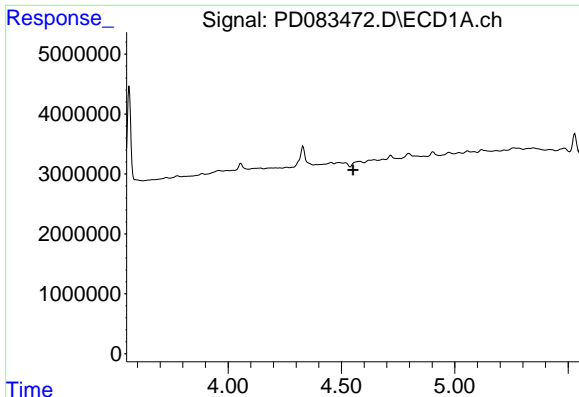
#5 Aldrin

R.T.: 0.000 min
 Exp R.T. : 5.291 min
 Response: 0
 Conc: N.D.



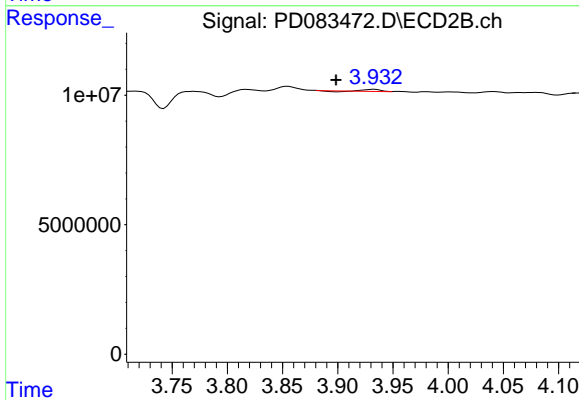
#5 Aldrin

R.T.: 4.203 min
 Delta R.T.: -0.016 min
 Response: 3205677
 Conc: 0.41 ng/ml



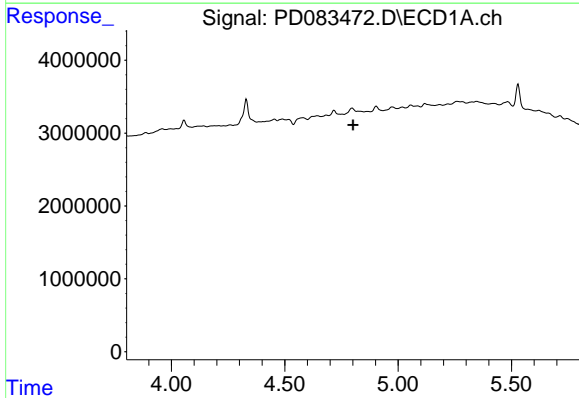
#6 beta-BHC

R.T.: 0.000 min
 Exp R.T. : 4.552 min
 Response: 0
 Conc: N.D.



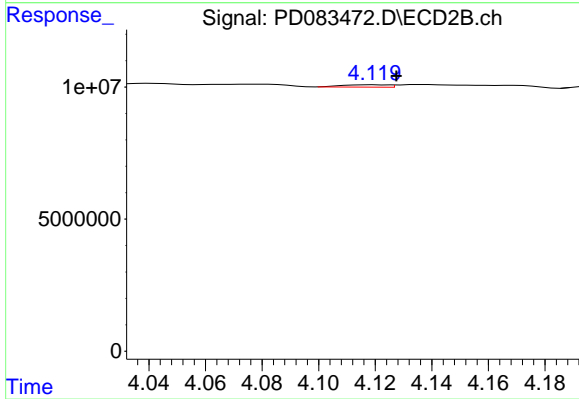
#6 beta-BHC

R.T.: 3.933 min
 Delta R.T.: 0.035 min
 Response: 708560
 Conc: 0.20 ng/ml



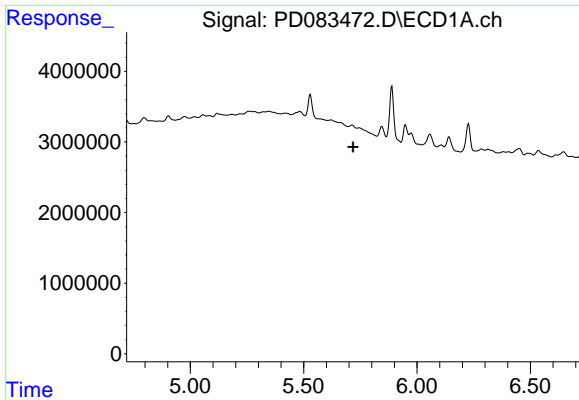
#7 delta-BHC

R.T.: 0.000 min
 Exp R.T. : 4.801 min
 Response: 0
 Conc: N.D.

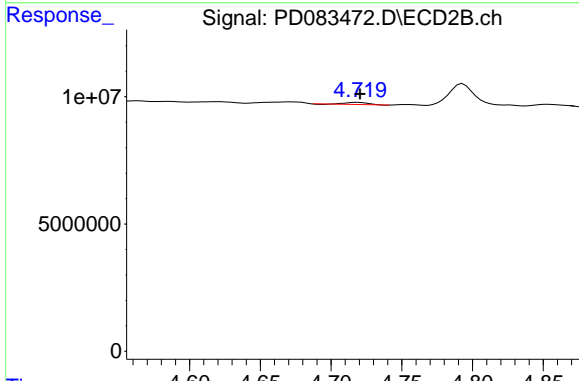


#7 delta-BHC

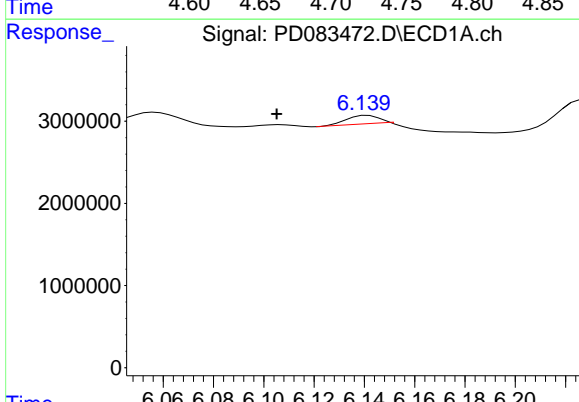
R.T.: 4.119 min
 Delta R.T.: -0.008 min
 Response: 1025423
 Conc: 0.12 ng/ml



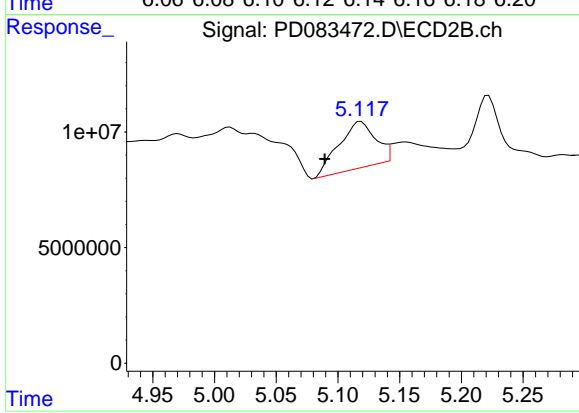
#8 Heptachlor epoxide
 R.T.: 0.000 min
 Exp R.T.: 5.718 min
 Response: 0
 Conc: N.D.



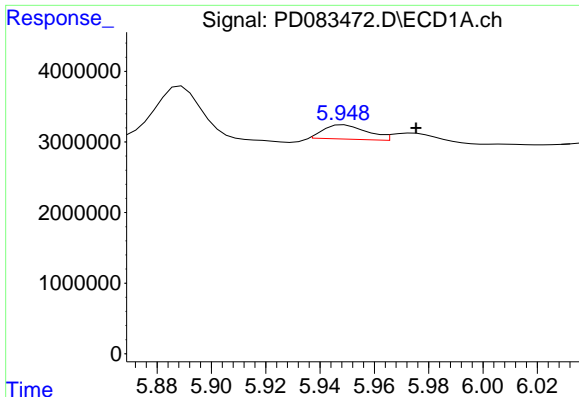
#8 Heptachlor epoxide
 R.T.: 4.719 min
 Delta R.T.: -0.001 min
 Response: 964475
 Conc: 0.13 ng/ml



#9 Endosulfan I
 R.T.: 6.141 min
 Delta R.T.: 0.036 min
 Response: 831353
 Conc: 0.43 ng/ml

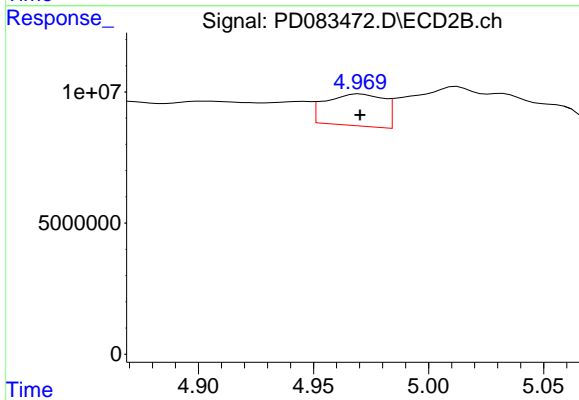


#9 Endosulfan I
 R.T.: 5.119 min
 Delta R.T.: 0.029 min
 Response: 41407124
 Conc: 6.26 ng/ml



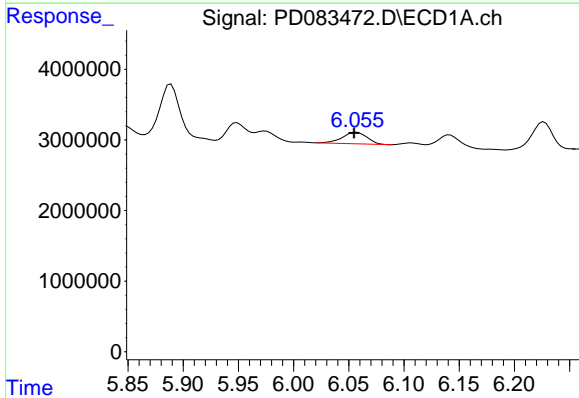
#10 trans-Chlordane

R.T.: 5.949 min
Delta R.T.: -0.026 min
Response: 2209195
Conc: 1.08 ng/ml



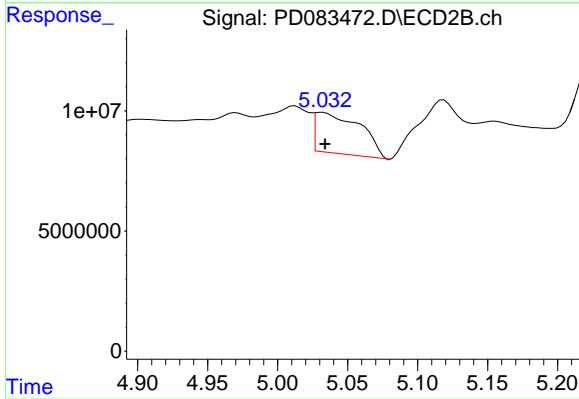
#10 trans-Chlordane

R.T.: 4.971 min
Delta R.T.: 0.000 min
Response: 21297725
Conc: 2.93 ng/ml



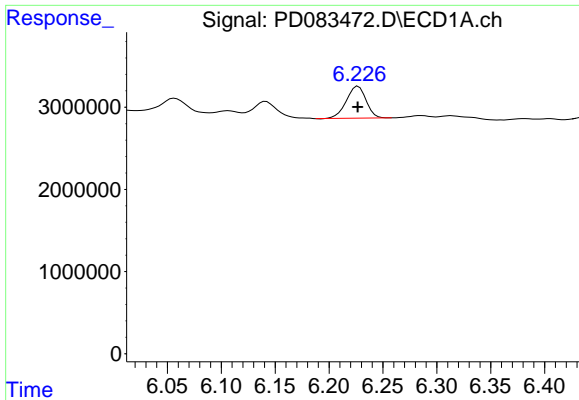
#11 cis-Chlordane

R.T.: 6.057 min
Delta R.T.: 0.002 min
Response: 2538892
Conc: 1.22 ng/ml

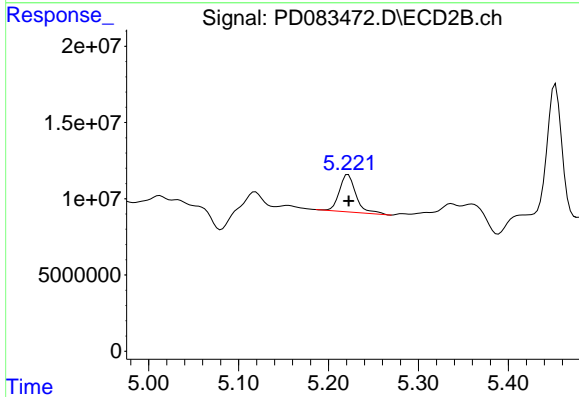


#11 cis-Chlordane

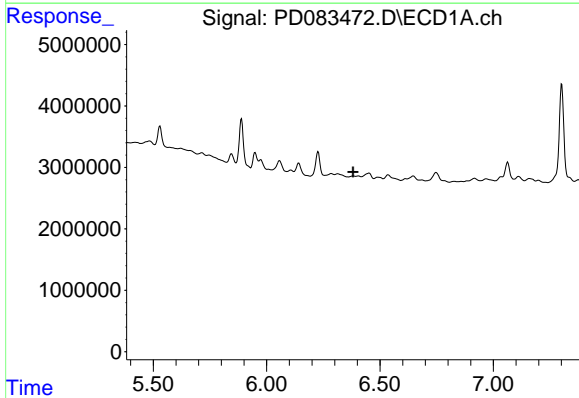
R.T.: 5.032 min
Delta R.T.: -0.002 min
Response: 38080774
Conc: 5.17 ng/ml



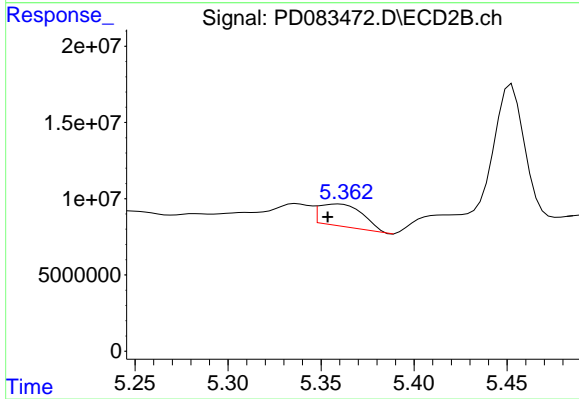
#12 4,4'-DDE
 R.T.: 6.227 min
 Delta R.T.: 0.000 min
 Response: 4959123
 Conc: 2.39 ng/ml



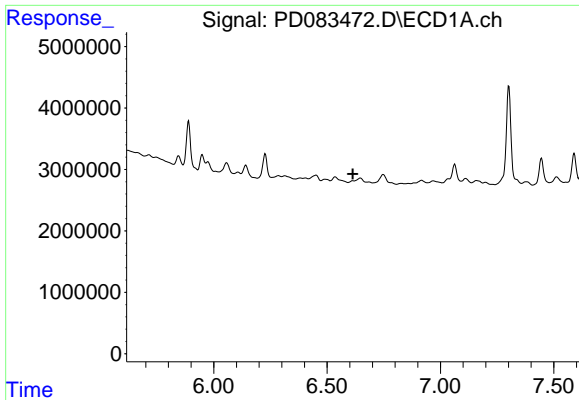
#12 4,4'-DDE
 R.T.: 5.222 min
 Delta R.T.: 0.000 min
 Response: 31496713
 Conc: 4.43 ng/ml



#13 Dieldrin
 R.T.: 0.000 min
 Exp R.T. : 6.381 min
 Response: 0
 Conc: N.D.

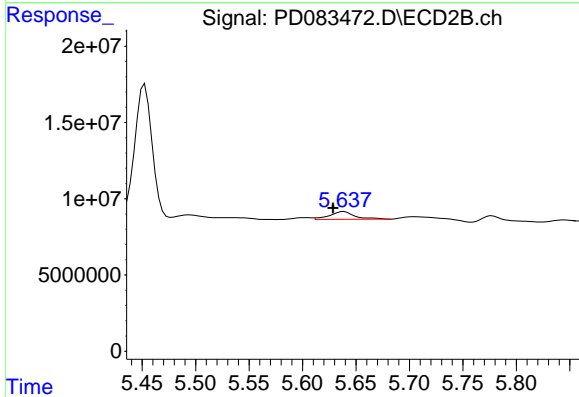


#13 Dieldrin
 R.T.: 5.360 min
 Delta R.T.: 0.006 min
 Response: 23839208
 Conc: 3.27 ng/ml



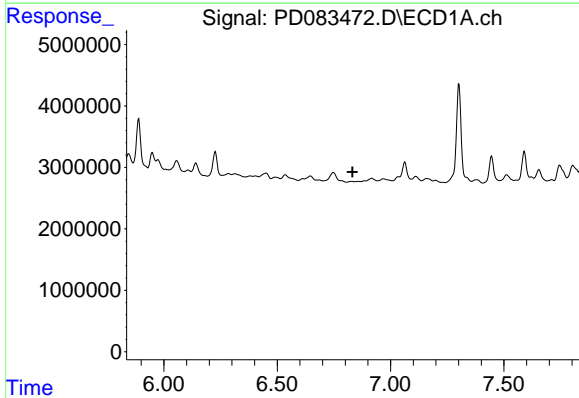
#14 Endrin

R.T.: 0.000 min
Exp R.T. : 6.613 min
Response: 0
Conc: N.D.



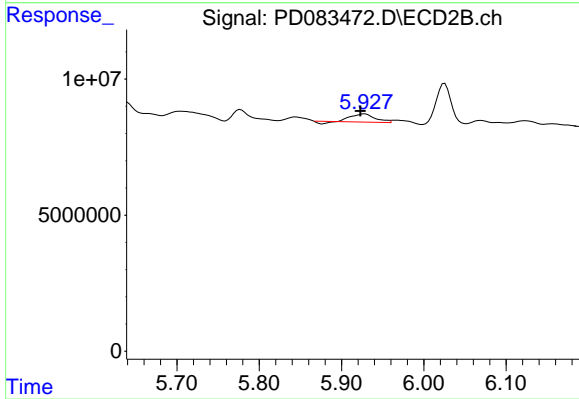
#14 Endrin

R.T.: 5.639 min
Delta R.T.: 0.010 min
Response: 8346072
Conc: 1.29 ng/ml



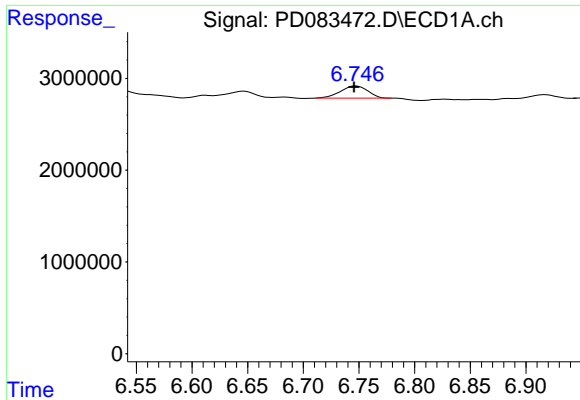
#15 Endosulfan II

R.T.: 0.000 min
Exp R.T. : 6.832 min
Response: 0
Conc: N.D.



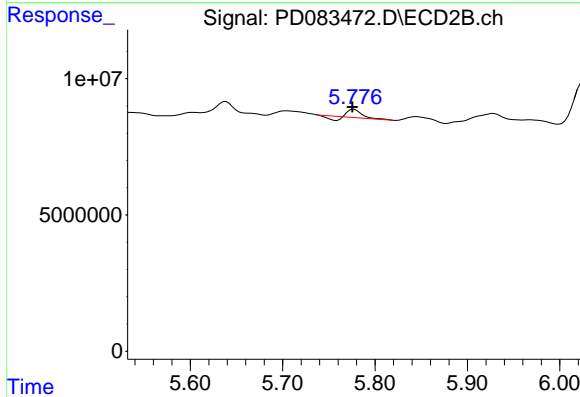
#15 Endosulfan II

R.T.: 5.928 min
Delta R.T.: 0.005 min
Response: 5625202
Conc: 0.89 ng/ml



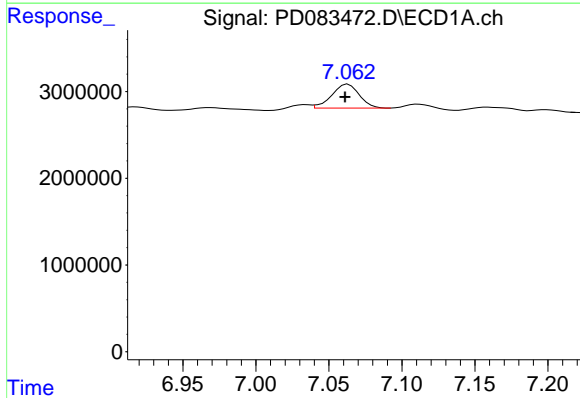
#16 4,4'-DDD

R.T.: 6.748 min
Delta R.T.: 0.002 min
Response: 2280687
Conc: 1.56 ng/ml



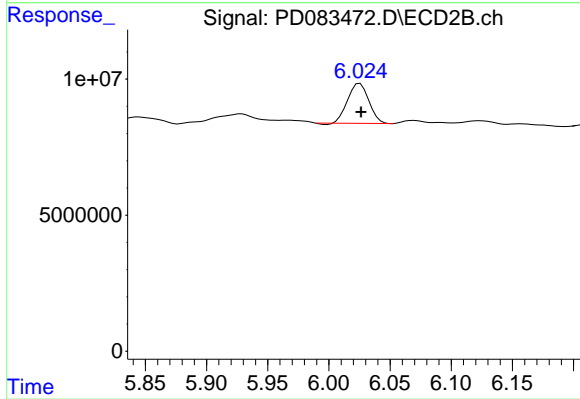
#16 4,4'-DDD

R.T.: 5.777 min
Delta R.T.: 0.001 min
Response: 1901398
Conc: 0.34 ng/ml



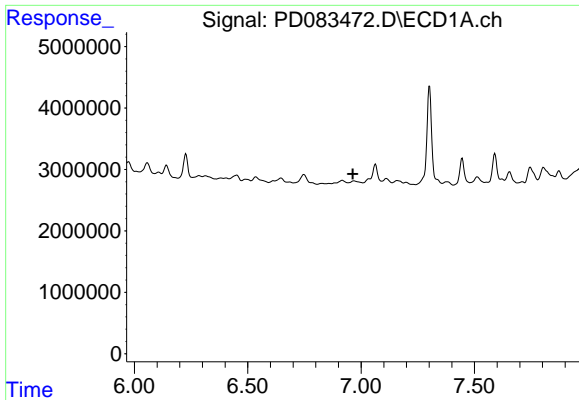
#17 4,4'-DDT

R.T.: 7.063 min
Delta R.T.: 0.002 min
Response: 3626950
Conc: 2.41 ng/ml



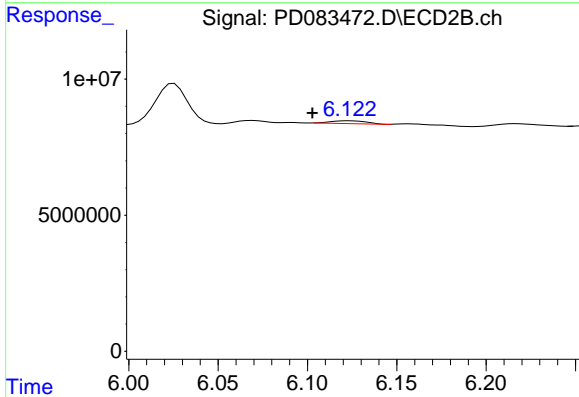
#17 4,4'-DDT

R.T.: 6.025 min
Delta R.T.: 0.000 min
Response: 1752504
Conc: 3.10 ng/ml



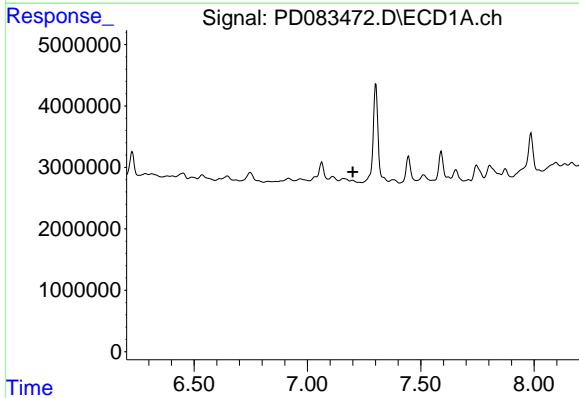
#18 Endrin aldehyde

R.T.: 0.000 min
 Exp R.T. : 6.964 min
 Response: 0
 Conc: N.D.



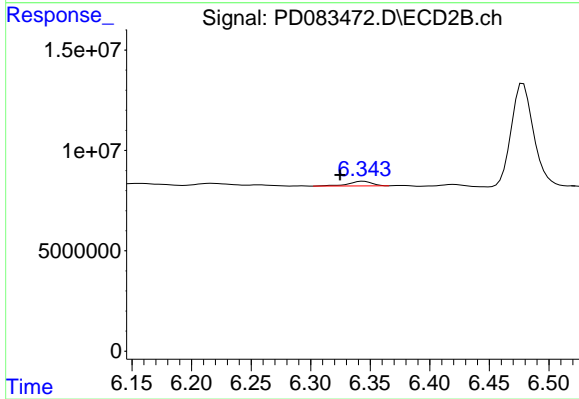
#18 Endrin aldehyde

R.T.: 6.123 min
 Delta R.T.: 0.021 min
 Response: 1440150
 Conc: 0.30 ng/ml



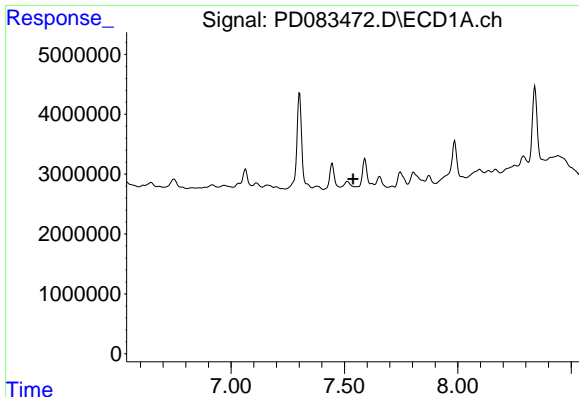
#19 Endosulfan Sulfate

R.T.: 0.000 min
 Exp R.T. : 7.200 min
 Response: 0
 Conc: N.D.



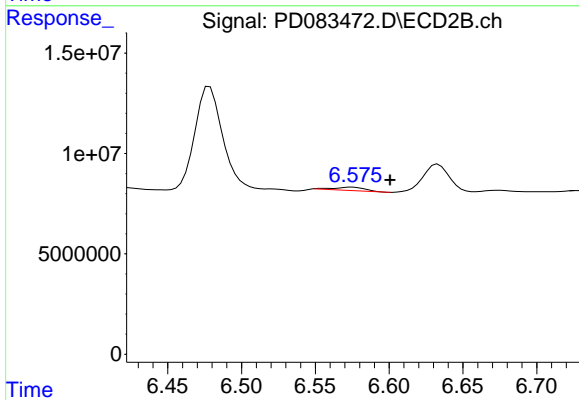
#19 Endosulfan Sulfate

R.T.: 6.344 min
 Delta R.T.: 0.020 min
 Response: 3214009
 Conc: 0.52 ng/ml



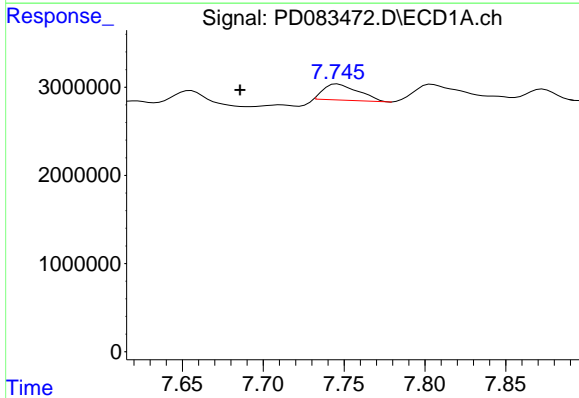
#20 Methoxychlor

R.T.: 0.000 min
 Exp R.T.: 7.538 min
 Response: 0
 Conc: N.D.



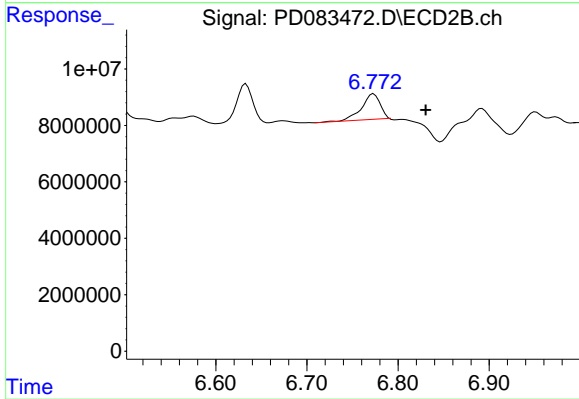
#20 Methoxychlor

R.T.: 6.575 min
 Delta R.T.: -0.025 min
 Response: 2431387
 Conc: 0.84 ng/ml



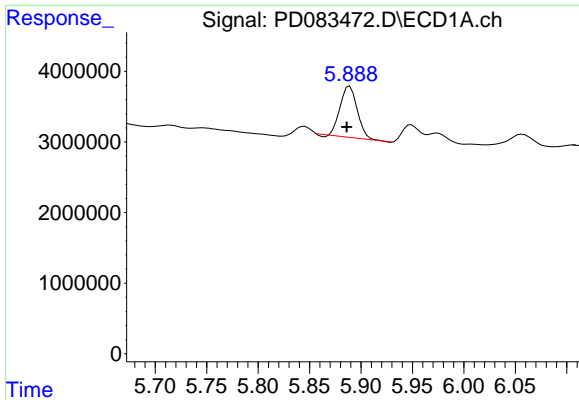
#21 Endrin ketone

R.T.: 7.746 min
 Delta R.T.: 0.060 min
 Response: 2693273
 Conc: 1.44 ng/ml

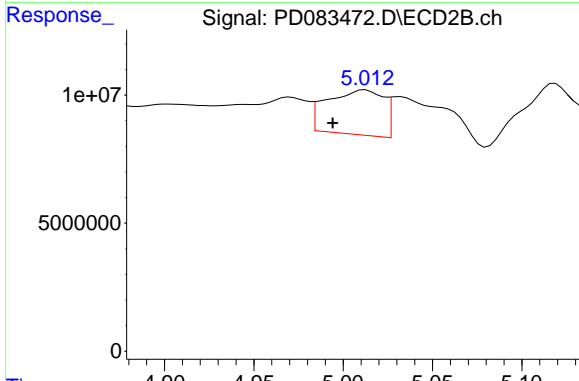


#21 Endrin ketone

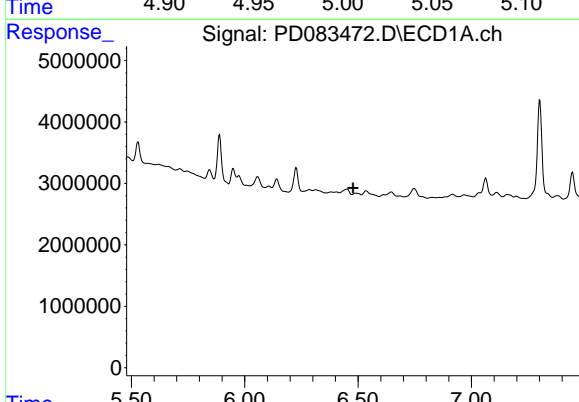
R.T.: 6.773 min
 Delta R.T.: -0.057 min
 Response: 12678015
 Conc: 1.89 ng/ml



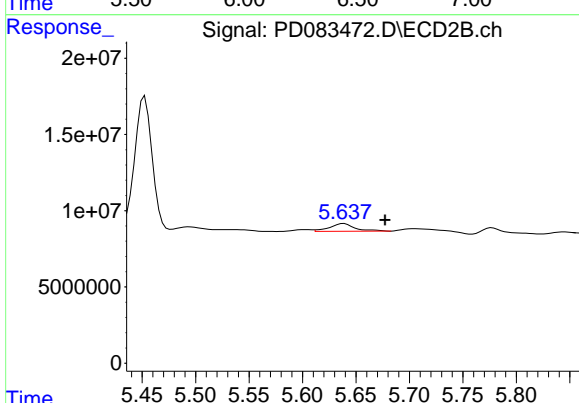
#22 Toxaphene-1
 R.T.: 5.889 min
 Delta R.T.: 0.003 min
 Response: 8251834
 Conc: 1362.81 ng/ml



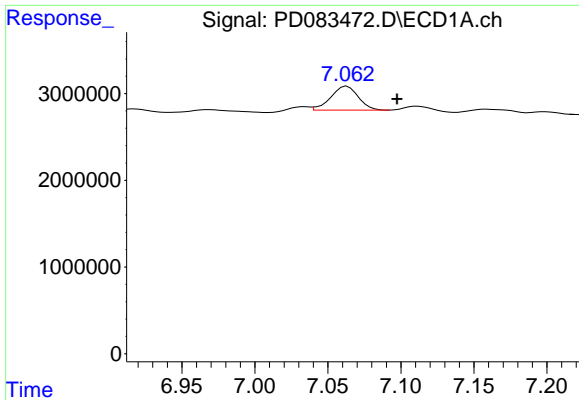
#22 Toxaphene-1
 R.T.: 5.012 min
 Delta R.T.: 0.018 min
 Response: 38346054
 Conc: 1059.02 ng/ml



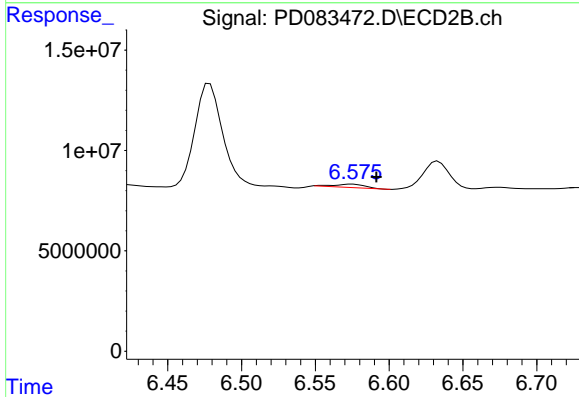
#23 Toxaphene-2
 R.T.: 0.000 min
 Exp R.T. : 6.479 min
 Response: 0
 Conc: N.D.



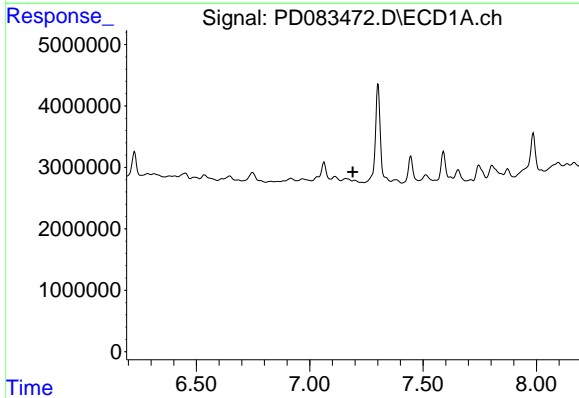
#23 Toxaphene-2
 R.T.: 5.639 min
 Delta R.T.: -0.039 min
 Response: 8346072
 Conc: 209.58 ng/ml



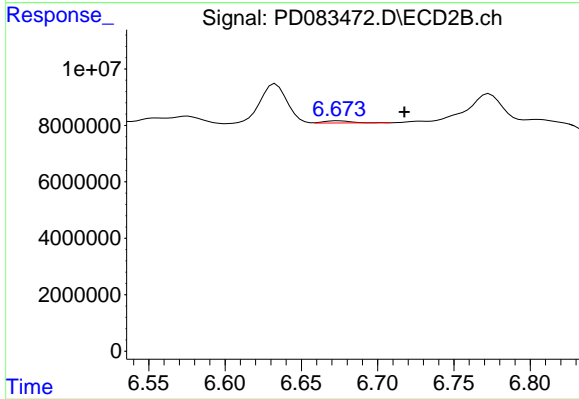
#24 Toxaphene-3
 R.T.: 7.063 min
 Delta R.T.: -0.034 min
 Response: 3626950
 Conc: 74.60 ng/ml



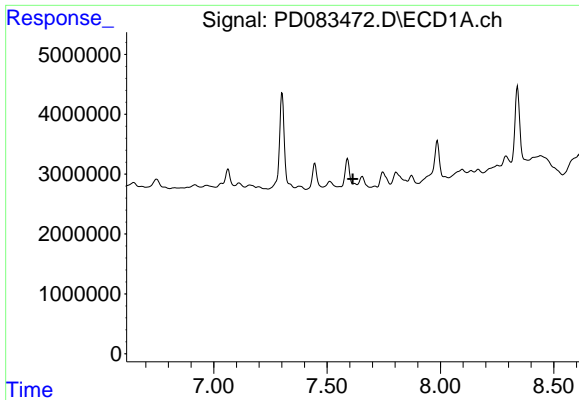
#24 Toxaphene-3
 R.T.: 6.575 min
 Delta R.T.: -0.016 min
 Response: 2431387
 Conc: 19.02 ng/ml



#25 Toxaphene-4
 R.T.: 0.000 min
 Exp R.T. : 7.190 min
 Response: 0
 Conc: N.D.

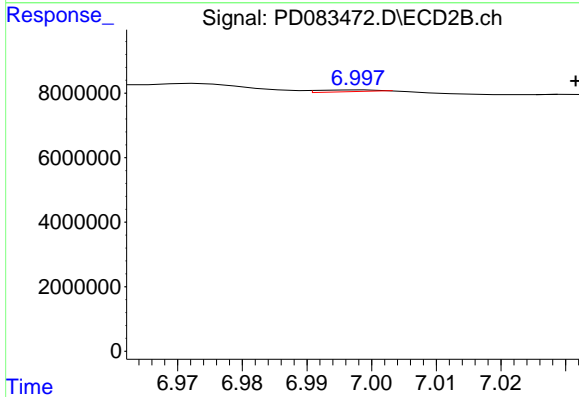


#25 Toxaphene-4
 R.T.: 6.674 min
 Delta R.T.: -0.043 min
 Response: 947690
 Conc: 5.30 ng/ml



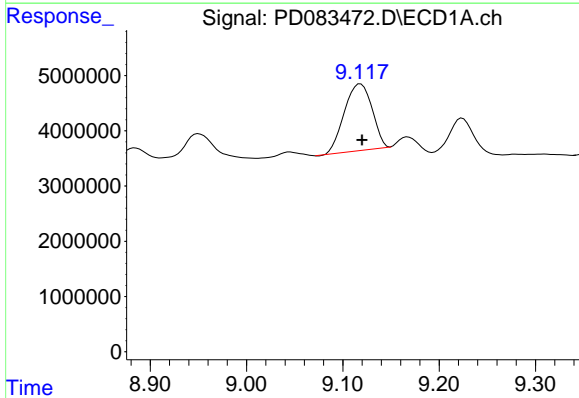
#26 Toxaphene-5

R.T.: 0.000 min
 Exp R.T.: 7.613 min
 Response: 0
 Conc: N.D.



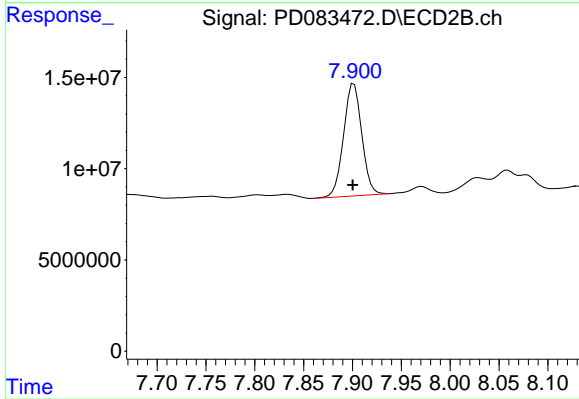
#26 Toxaphene-5

R.T.: 6.998 min
 Delta R.T.: -0.033 min
 Response: 640234
 Conc: 9.10 ng/ml



#27 Decachlorobiphenyl

R.T.: 9.118 min
 Delta R.T.: -0.002 min
 Response: 24067213
 Conc: 12.38 ng/ml



#27 Decachlorobiphenyl

R.T.: 7.902 min
 Delta R.T.: 0.001 min
 Response: 79750440
 Conc: 13.13 ng/ml