

Data Path : Z:\pestpcbsrv\HPCHEM1\ECD_D\Data\PD060724\
 Data File : PD083482.D
 Signal(s) : Signal #1: ECD1A.ch Signal #2: ECD2B.ch
 Acq On : 07 Jun 2024 00:45
 Operator : AR\AJ
 Sample : P2590-10
 Misc :
 ALS Vial : 33 Sample Multiplier: 1

Integration File signal 1: autoint1.e
 Integration File signal 2: autoint2.e
 Quant Time: Jun 07 08:16:36 2024
 Quant Method : Z:\pestpcbsrv\HPCHEM1\ECD_D\Method\PD060724CLP.M
 Quant Title : GC Extractables
 QLast Update : Fri Jun 07 04:03:14 2024
 Response via : Initial Calibration
 Integrator: ChemStation

Volume Inj. : 1 µl
 Signal #1 Phase : ZB-MR1 Signal #2 Phase: ZB-MR2
 Signal #1 Info : 30M x 0.32mm x0.5 Signal #2 Info : 30M x 0.32mm x 0.25µm

Compound	RT#1	RT#2	Resp#1	Resp#2	ng/ml	ng/ml

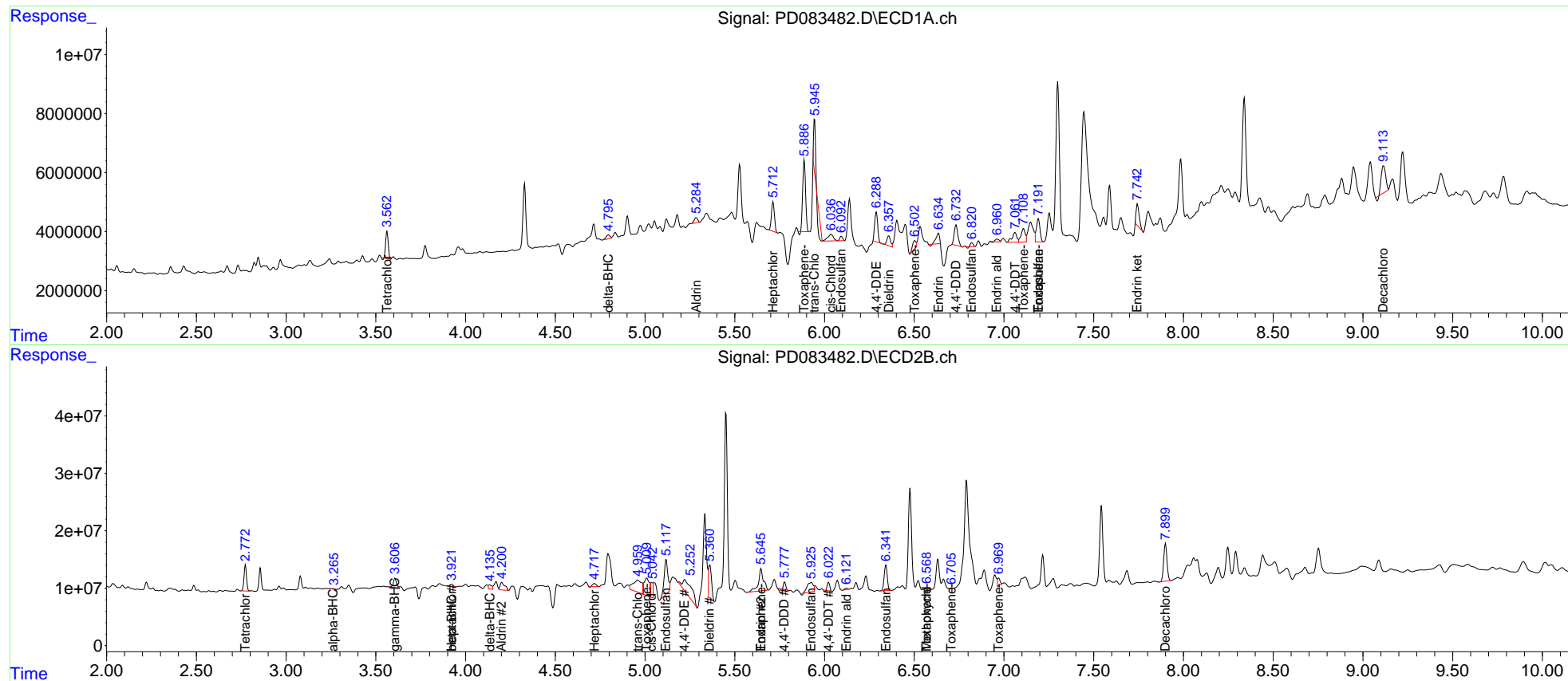
System Monitoring Compounds						
1) SA Tetrachlo...	3.563	2.774	9089386	44351506	6.963	8.136
27) SA Decachlor...	9.115	7.900	15156175	84067856	7.794	13.845 #
Target Compounds						
2) A alpha-BHC	0.000	3.262	0	2174129	N.D.	0.255
3) MA gamma-BHC...	0.000	3.607	0	21760957	N.D.	2.787
5) MB Aldrin	5.286	4.202	2369850	23921888	0.998	3.096 #
6) B beta-BHC	4.573	3.922	-1040400	4417152	N.D.	1.238
7) B delta-BHC	4.797	4.136	2052290	9918627	0.781	1.163 #
8) B Heptachlo...	5.714	4.719	11515165	7506834	5.575	1.026 #
9) A Endosulfan I	6.094	5.118	1706186	85416423	0.872	12.921 #
10) B trans-Chl...	5.945	4.959	4971774	71148451	2.442	9.796 #
11) B cis-Chlor...	6.037	5.036	5092089	22764441	2.445	3.092 #
12) B 4,4'-DDE	6.289f	5.222	11709361	88045058	5.645	12.389 #
13) MA Dieldrin	6.358	5.361	4703982	69729889	2.275	9.571 #
14) MA Endrin	6.635	5.647	4595279	75818525	2.720	11.723 #
15) B Endosulfa...	6.821	5.927	1103721	36682015	0.614	5.781 #
16) A 4,4'-DDD	6.733	5.778	9840205	4711578	6.715	0.836 #
17) MA 4,4'-DDT	7.062	6.023	6058887	13268064	4.022	2.344 #
18) B Endrin al...	6.962	6.122	1341569	2423387	1.006	0.506 #
19) B Endosulfa...	7.192	6.342	10929332	52809158	6.388	8.547 #
20) A Methoxychlor	7.556	6.570	-240275	3800830	N.D.	1.308
22) Toxaphene-1	5.888	5.010	27102347	63191027	4476.006	1745.169 #
23) Toxaphene-2	6.503	5.647	3692981	75818525	214.677	1903.932 #
24) Toxaphene-3	7.109	6.570	7373990	3800830	151.667	29.733 #
25) Toxaphene-4	7.192	6.707	10929332	436190	302.026	2.440 #
26) Toxaphene-5	7.556f	6.970f	-240275	13892459	N.D.	197.517

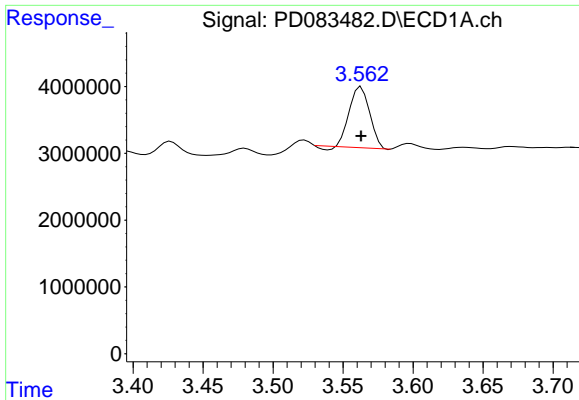
(f)=RT Delta > 1/2 Window (#)=Amounts differ by > 25% (m)=manual int.

Data Path : Z:\pestpcbsrv\HPCHEM1\ECD_D\Data\PD060724\
 Data File : PD083482.D
 Signal(s) : Signal #1: ECD1A.ch Signal #2: ECD2B.ch
 Acq On : 07 Jun 2024 00:45
 Operator : AR\AJ
 Sample : P2590-10
 Misc :
 ALS Vial : 33 Sample Multiplier: 1

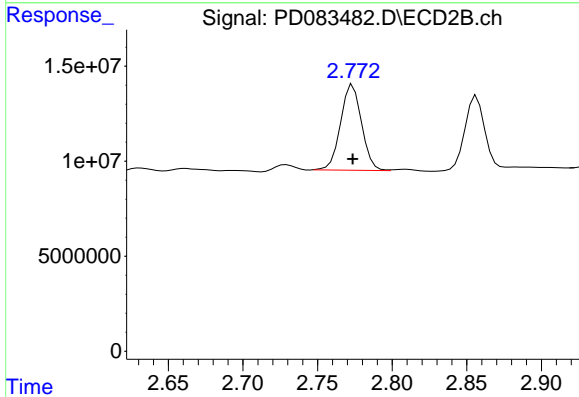
Integration File signal 1: autoint1.e
 Integration File signal 2: autoint2.e
 Quant Time: Jun 07 08:16:36 2024
 Quant Method : Z:\pestpcbsrv\HPCHEM1\ECD_D\Method\PD060724CLP.M
 Quant Title : GC Extractables
 QLast Update : Fri Jun 07 04:03:14 2024
 Response via : Initial Calibration
 Integrator: ChemStation

Volume Inj. : 1 µl
 Signal #1 Phase : ZB-MR1 Signal #2 Phase: ZB-MR2
 Signal #1 Info : 30M x 0.32mm x0.5 Signal #2 Info : 30M x 0.32mm x 0.25µm

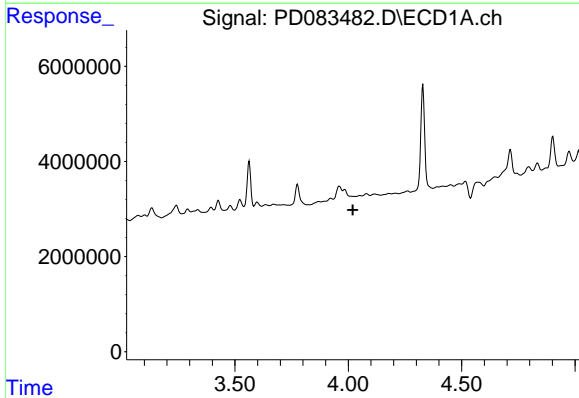




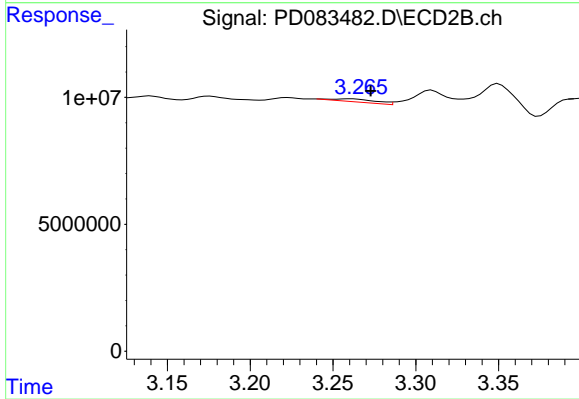
#1 Tetrachloro-m-xylene
 R.T.: 3.563 min
 Delta R.T.: 0.000 min
 Response: 9089386
 Conc: 6.96 ng/ml



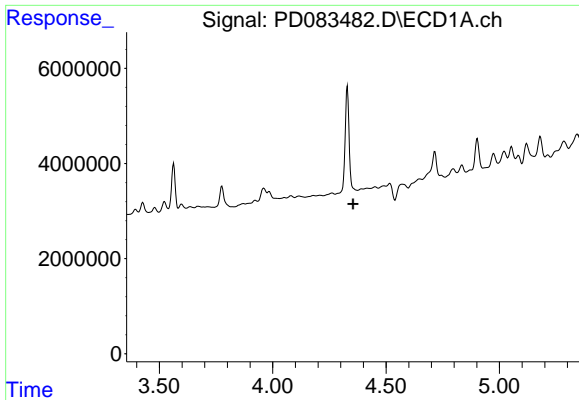
#1 Tetrachloro-m-xylene
 R.T.: 2.774 min
 Delta R.T.: 0.000 min
 Response: 44351506
 Conc: 8.14 ng/ml



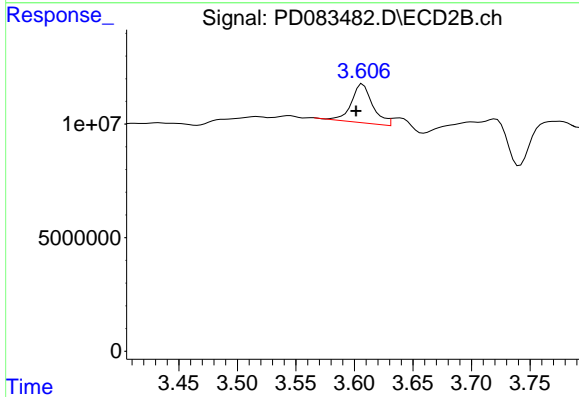
#2 alpha-BHC
 R.T.: 0.000 min
 Exp R.T. : 4.021 min
 Response: 0
 Conc: N.D.



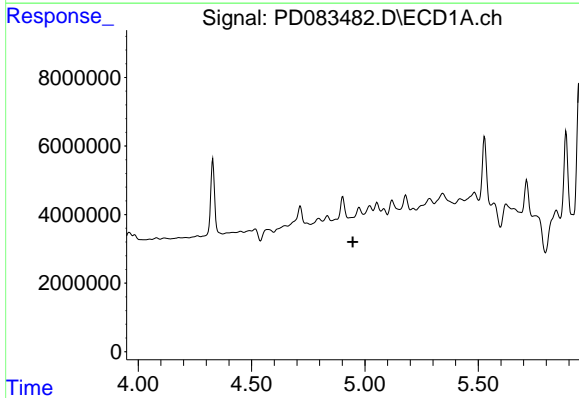
#2 alpha-BHC
 R.T.: 3.262 min
 Delta R.T.: -0.011 min
 Response: 2174129
 Conc: 0.26 ng/ml



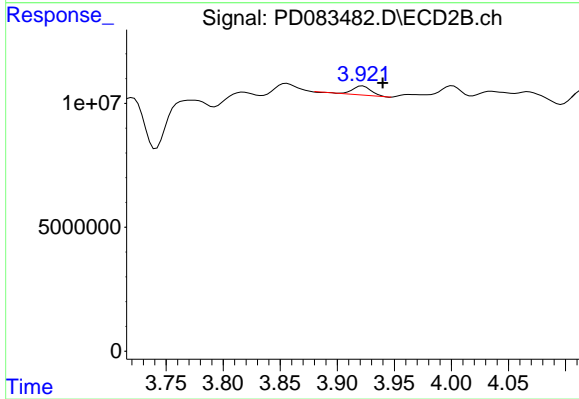
#3 gamma-BHC (Lindane)
 R.T.: 0.000 min
 Exp R.T.: 4.355 min
 Response: 0
 Conc: N.D.



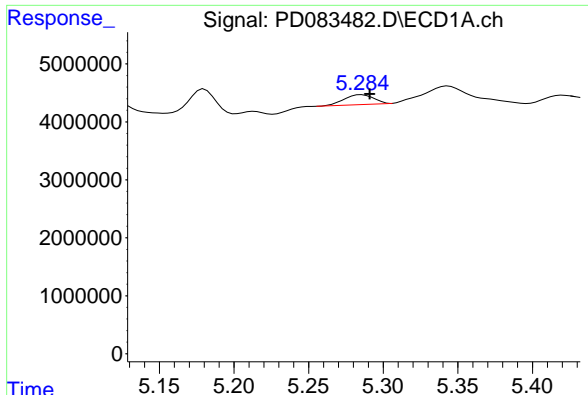
#3 gamma-BHC (Lindane)
 R.T.: 3.607 min
 Delta R.T.: 0.006 min
 Response: 21760957
 Conc: 2.79 ng/ml



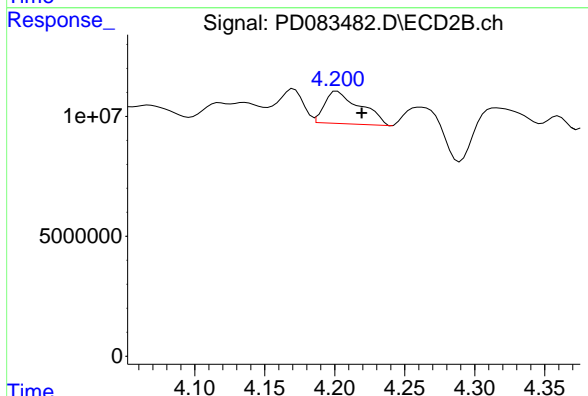
#4 Heptachlor
 R.T.: 4.975 min
 Delta R.T.: 0.027 min
 Response: -6885684
 Conc: N.D.



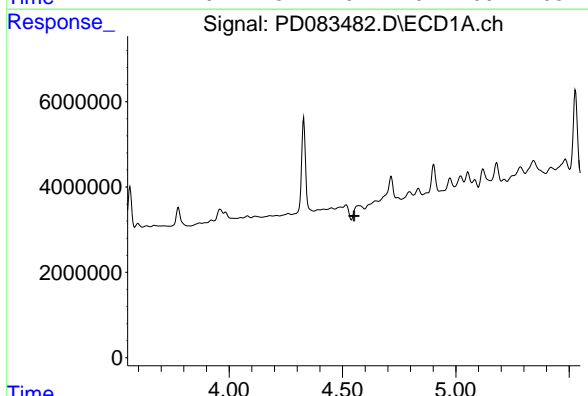
#4 Heptachlor
 R.T.: 3.922 min
 Delta R.T.: -0.018 min
 Response: 4417152
 Conc: 0.56 ng/ml



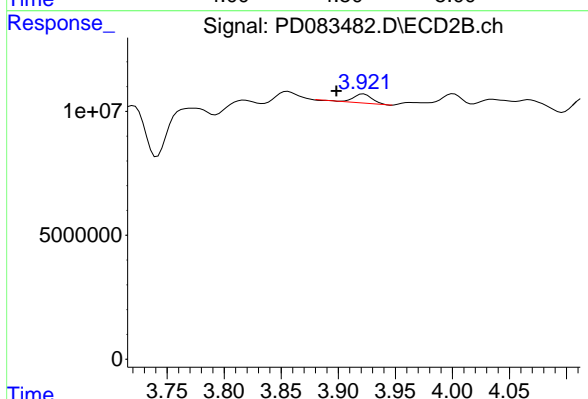
#5 Aldrin
R.T.: 5.286 min
Delta R.T.: -0.006 min
Response: 2369850
Conc: 1.00 ng/ml



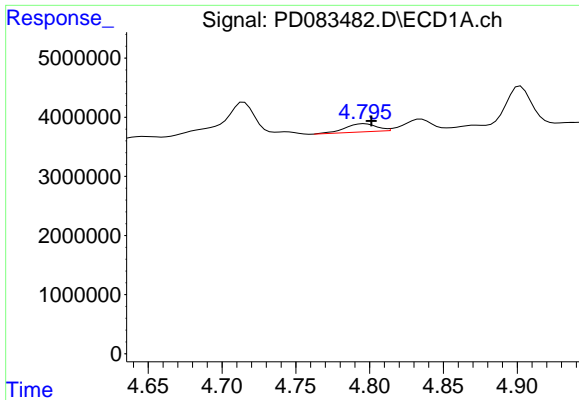
#5 Aldrin
R.T.: 4.202 min
Delta R.T.: -0.017 min
Response: 23921888
Conc: 3.10 ng/ml



#6 beta-BHC
R.T.: 4.573 min
Delta R.T.: 0.021 min
Response: -1040400
Conc: N.D.

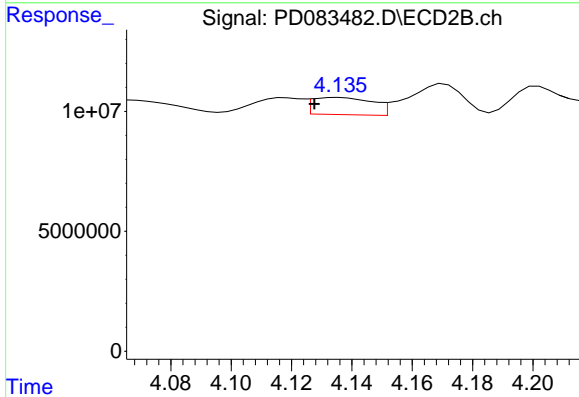


#6 beta-BHC
R.T.: 3.922 min
Delta R.T.: 0.024 min
Response: 4417152
Conc: 1.24 ng/ml



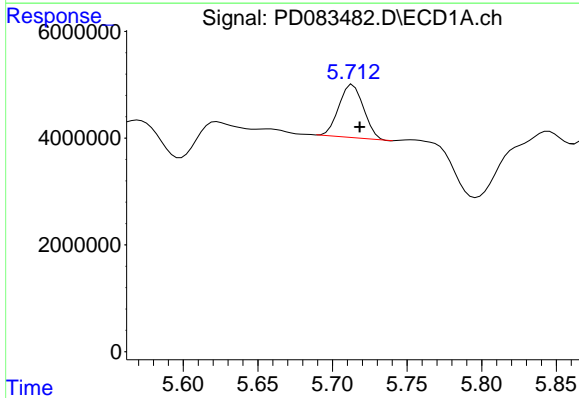
#7 delta-BHC

R.T.: 4.797 min
Delta R.T.: -0.005 min
Response: 2052290
Conc: 0.78 ng/ml



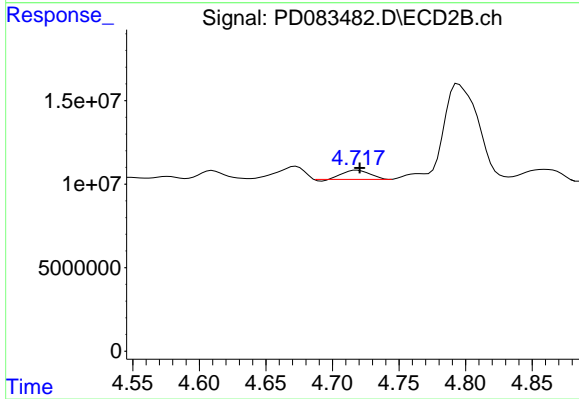
#7 delta-BHC

R.T.: 4.136 min
Delta R.T.: 0.008 min
Response: 9918627
Conc: 1.16 ng/ml



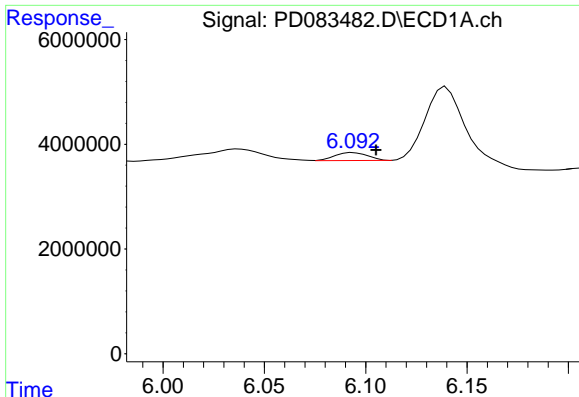
#8 Heptachlor epoxide

R.T.: 5.714 min
Delta R.T.: -0.005 min
Response: 11515165
Conc: 5.58 ng/ml



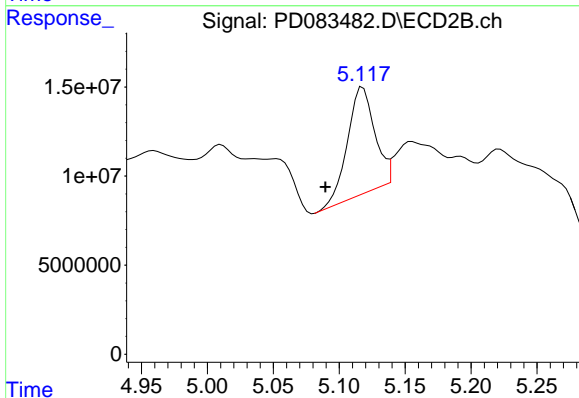
#8 Heptachlor epoxide

R.T.: 4.719 min
Delta R.T.: -0.002 min
Response: 7506834
Conc: 1.03 ng/ml



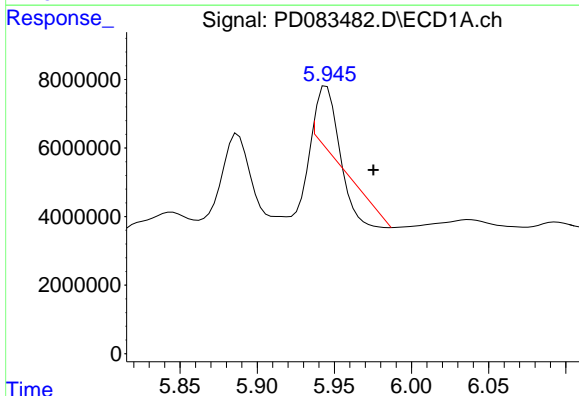
#9 Endosulfan I

R.T.: 6.094 min
 Delta R.T.: -0.011 min
 Response: 1706186
 Conc: 0.87 ng/ml



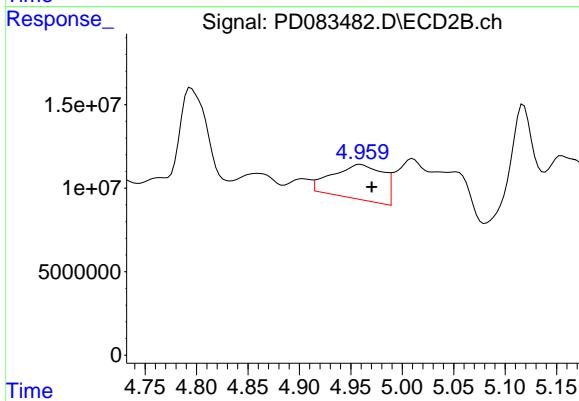
#9 Endosulfan I

R.T.: 5.118 min
 Delta R.T.: 0.029 min
 Response: 85416423
 Conc: 12.92 ng/ml



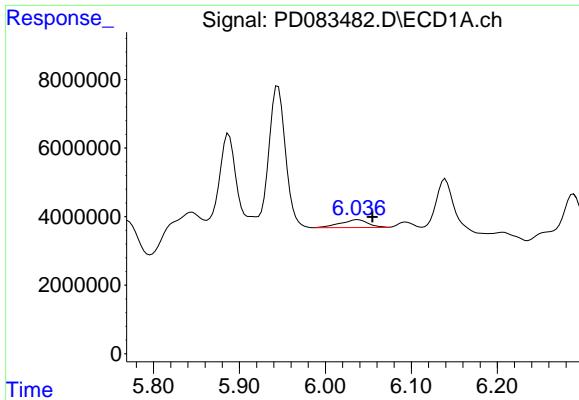
#10 trans-Chlordane

R.T.: 5.945 min
 Delta R.T.: -0.030 min
 Response: 4971774
 Conc: 2.44 ng/ml

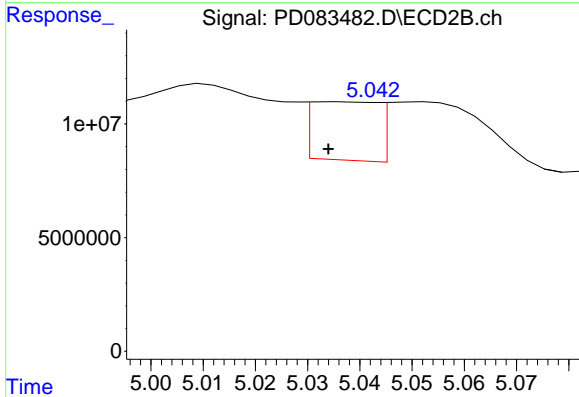


#10 trans-Chlordane

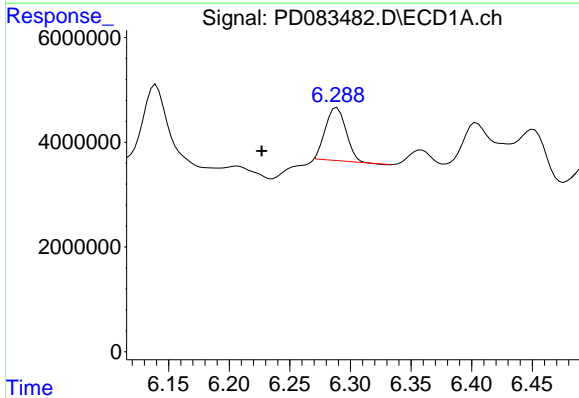
R.T.: 4.959 min
 Delta R.T.: -0.011 min
 Response: 71148451
 Conc: 9.80 ng/ml



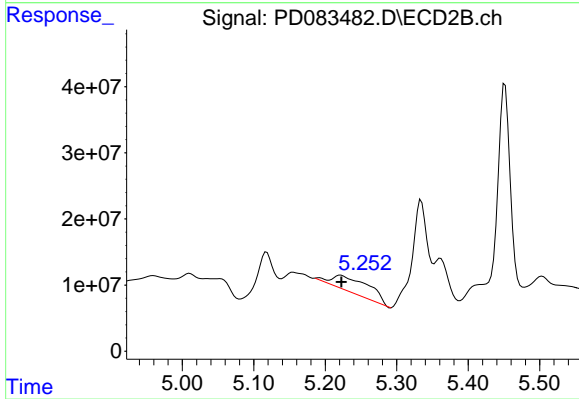
#11 cis-Chlordane
 R.T.: 6.037 min
 Delta R.T.: -0.017 min
 Response: 5092089
 Conc: 2.45 ng/ml



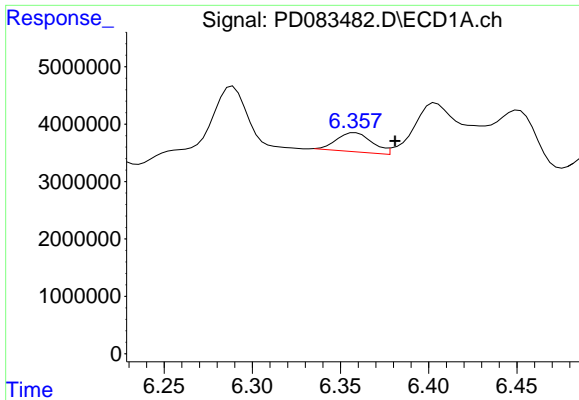
#11 cis-Chlordane
 R.T.: 5.036 min
 Delta R.T.: 0.002 min
 Response: 22764441
 Conc: 3.09 ng/ml



#12 4,4'-DDE
 R.T.: 6.289 min
 Delta R.T.: 0.062 min
 Response: 11709361
 Conc: 5.65 ng/ml

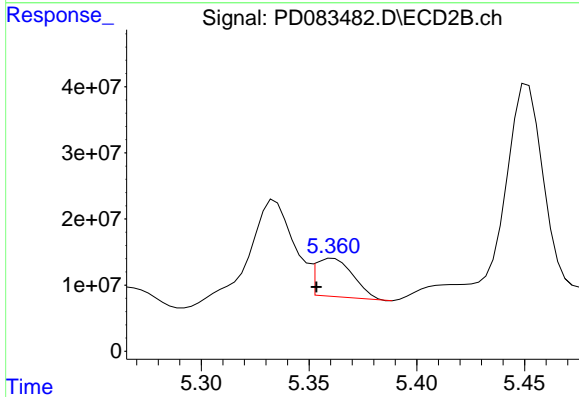


#12 4,4'-DDE
 R.T.: 5.222 min
 Delta R.T.: 0.000 min
 Response: 88045058
 Conc: 12.39 ng/ml



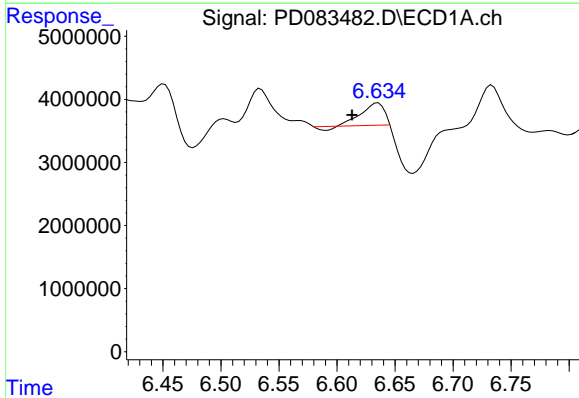
#13 Dieldrin

R.T.: 6.358 min
Delta R.T.: -0.022 min
Response: 4703982
Conc: 2.27 ng/ml



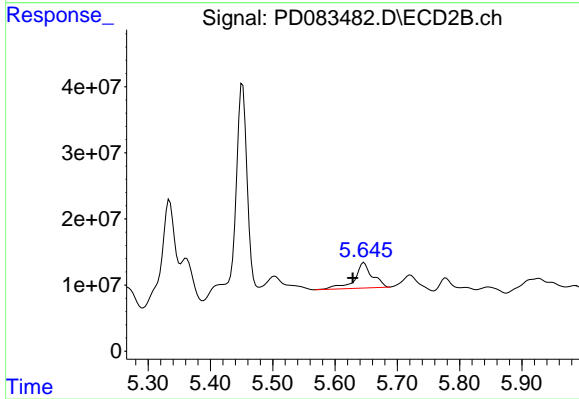
#13 Dieldrin

R.T.: 5.361 min
Delta R.T.: 0.008 min
Response: 69729889
Conc: 9.57 ng/ml



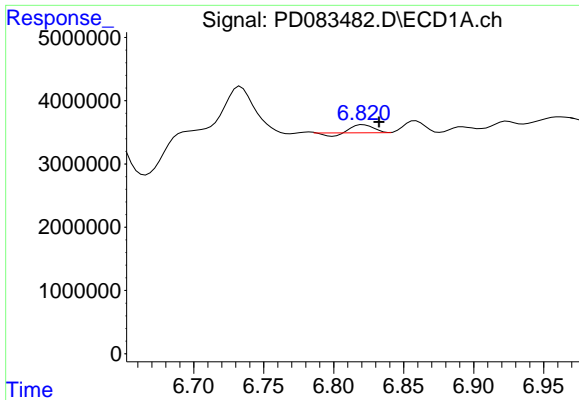
#14 Endrin

R.T.: 6.635 min
Delta R.T.: 0.022 min
Response: 4595279
Conc: 2.72 ng/ml

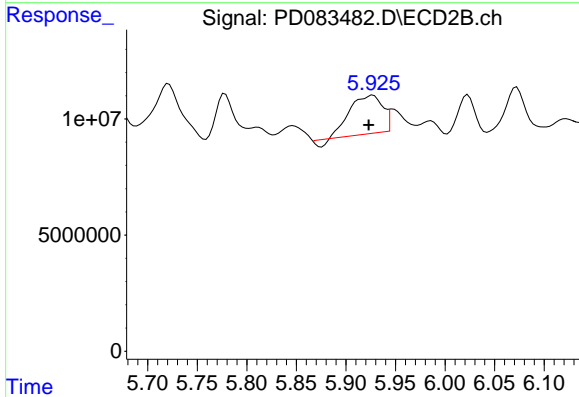


#14 Endrin

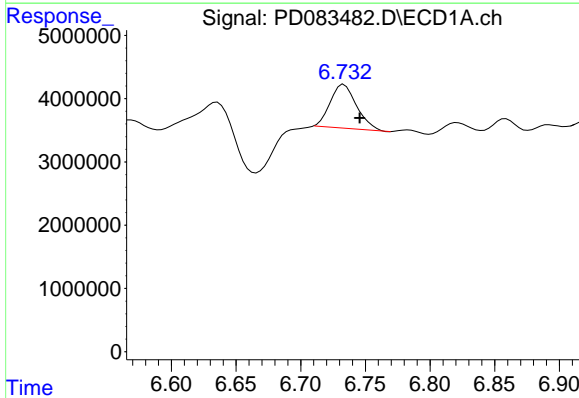
R.T.: 5.647 min
Delta R.T.: 0.018 min
Response: 75818525
Conc: 11.72 ng/ml



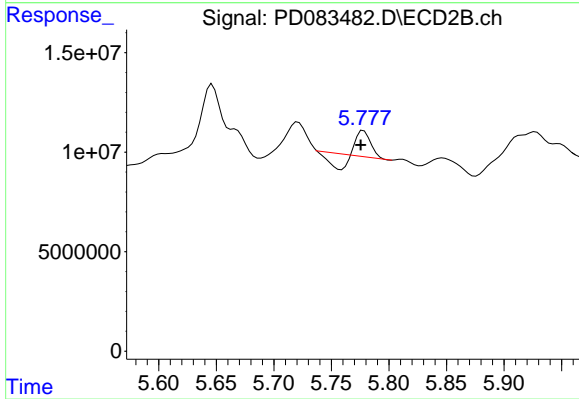
#15 Endosulfan II
R.T.: 6.821 min
Delta R.T.: -0.011 min
Response: 1103721
Conc: 0.61 ng/ml



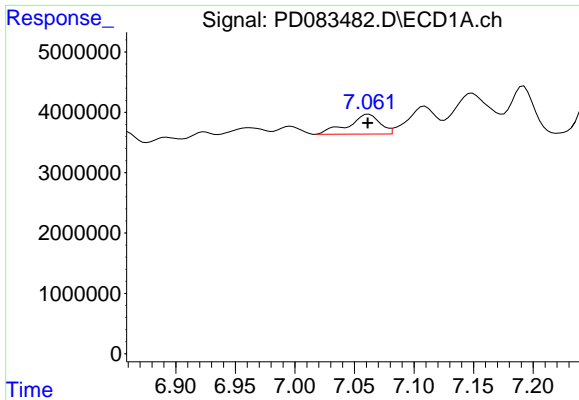
#15 Endosulfan II
R.T.: 5.927 min
Delta R.T.: 0.004 min
Response: 36682015
Conc: 5.78 ng/ml



#16 4,4'-DDD
R.T.: 6.733 min
Delta R.T.: -0.012 min
Response: 9840205
Conc: 6.72 ng/ml

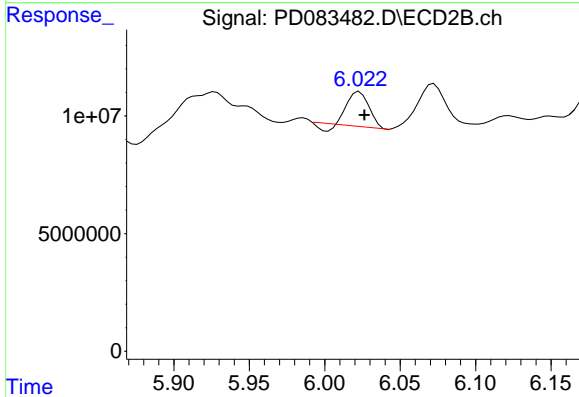


#16 4,4'-DDD
R.T.: 5.778 min
Delta R.T.: 0.002 min
Response: 4711578
Conc: 0.84 ng/ml



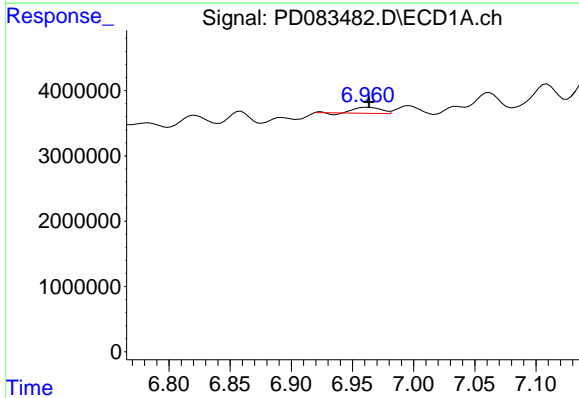
#17 4,4'-DDT

R.T.: 7.062 min
 Delta R.T.: 0.000 min
 Response: 6058887
 Conc: 4.02 ng/ml



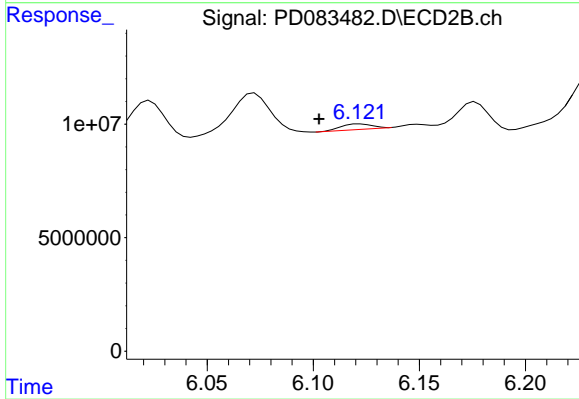
#17 4,4'-DDT

R.T.: 6.023 min
 Delta R.T.: -0.003 min
 Response: 13268064
 Conc: 2.34 ng/ml



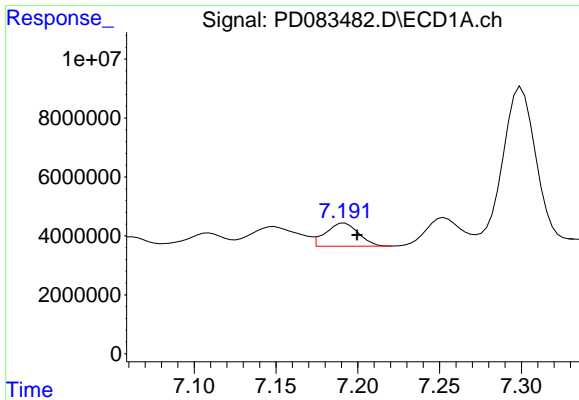
#18 Endrin aldehyde

R.T.: 6.962 min
 Delta R.T.: -0.002 min
 Response: 1341569
 Conc: 1.01 ng/ml



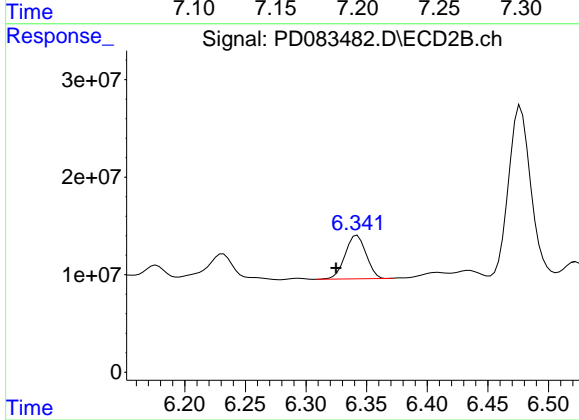
#18 Endrin aldehyde

R.T.: 6.122 min
 Delta R.T.: 0.019 min
 Response: 2423387
 Conc: 0.51 ng/ml



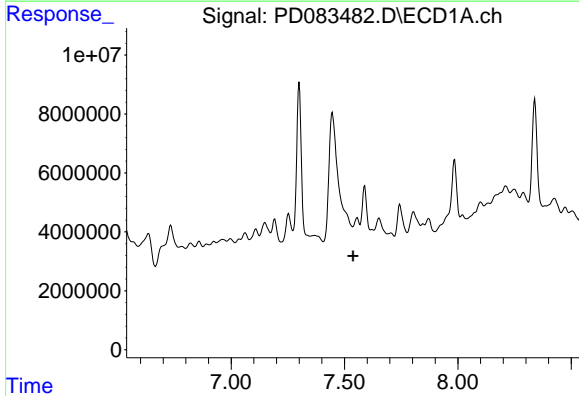
#19 Endosulfan Sulfate

R.T.: 7.192 min
Delta R.T.: -0.008 min
Response: 10929332
Conc: 6.39 ng/ml



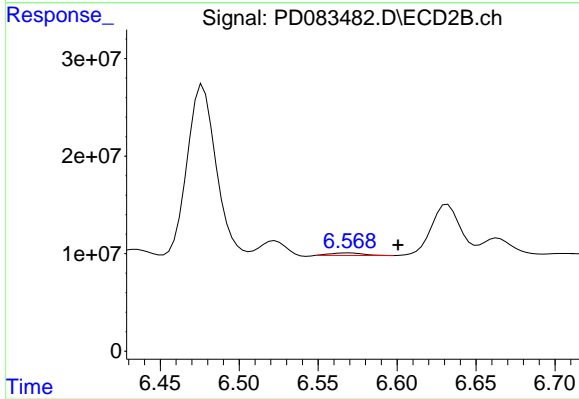
#19 Endosulfan Sulfate

R.T.: 6.342 min
Delta R.T.: 0.018 min
Response: 52809158
Conc: 8.55 ng/ml



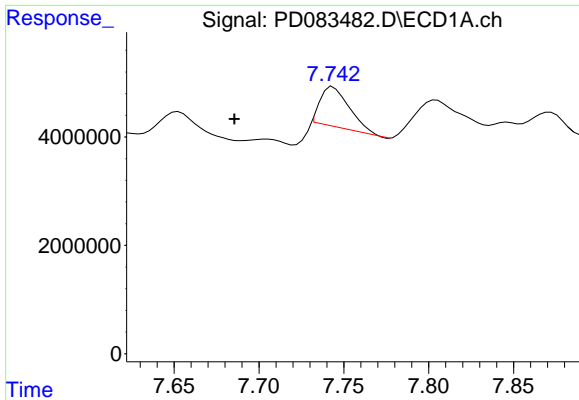
#20 Methoxychlor

R.T.: 7.556 min
Delta R.T.: 0.018 min
Response: -240275
Conc: N.D.



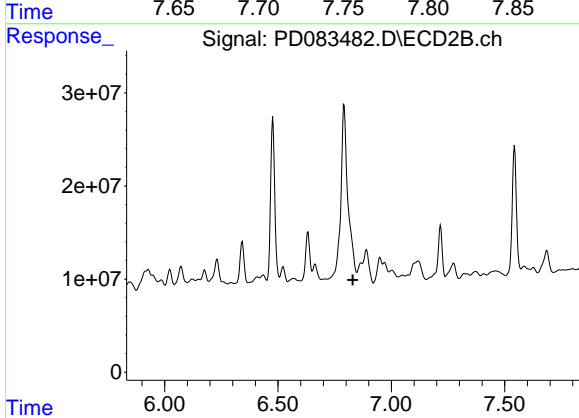
#20 Methoxychlor

R.T.: 6.570 min
Delta R.T.: -0.031 min
Response: 3800830
Conc: 1.31 ng/ml



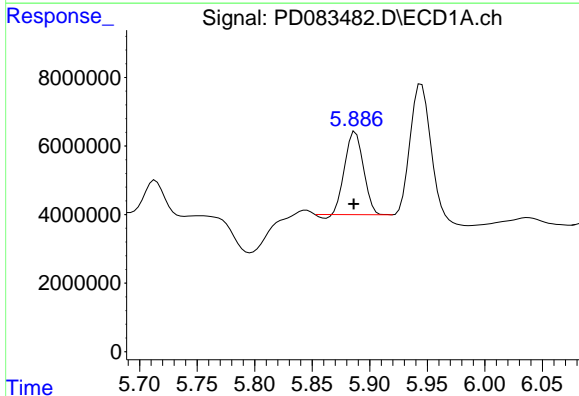
#21 Endrin ketone

R.T.: 7.744 min
 Delta R.T.: 0.058 min
 Response: 8726886
 Conc: 4.68 ng/ml



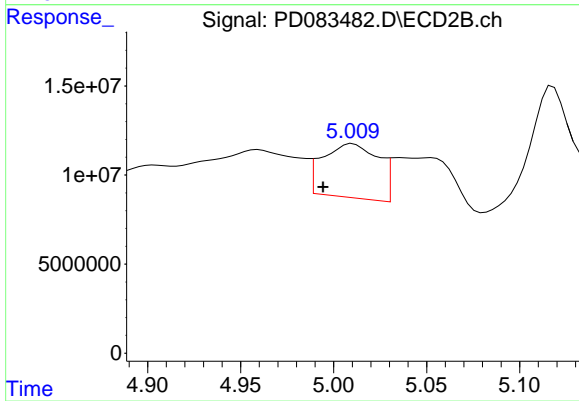
#21 Endrin ketone

R.T.: 6.867 min
 Delta R.T.: 0.037 min
 Response: -35424910
 Conc: N.D.



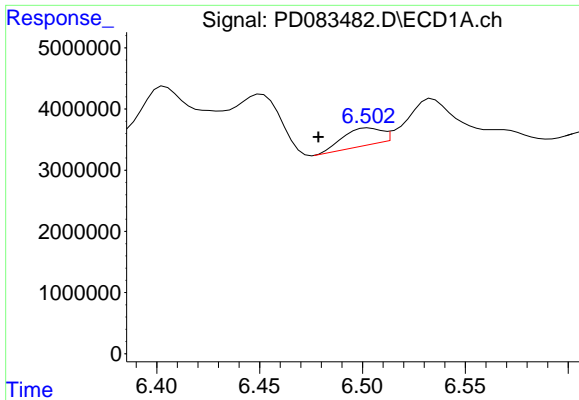
#22 Toxaphene-1

R.T.: 5.888 min
 Delta R.T.: 0.001 min
 Response: 27102347
 Conc: 4476.01 ng/ml



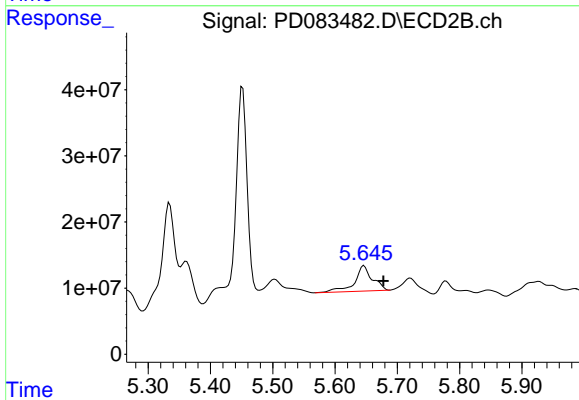
#22 Toxaphene-1

R.T.: 5.010 min
 Delta R.T.: 0.016 min
 Response: 63191027
 Conc: 1745.17 ng/ml



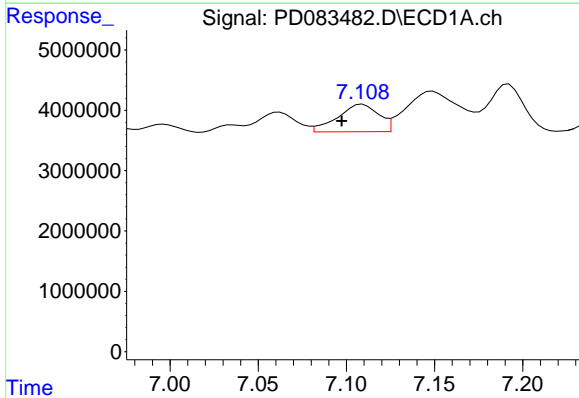
#23 Toxaphene-2

R.T.: 6.503 min
Delta R.T.: 0.024 min
Response: 3692981
Conc: 214.68 ng/ml



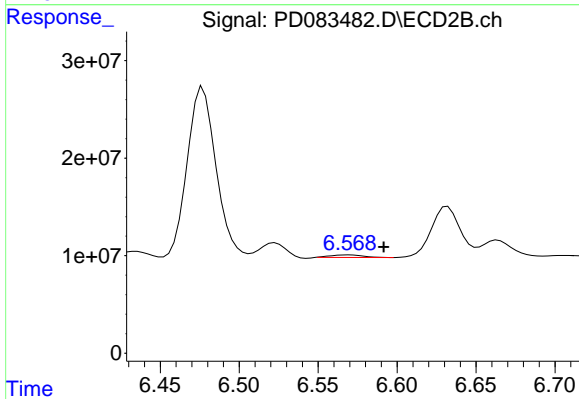
#23 Toxaphene-2

R.T.: 5.647 min
Delta R.T.: -0.031 min
Response: 75818525
Conc: 1903.93 ng/ml



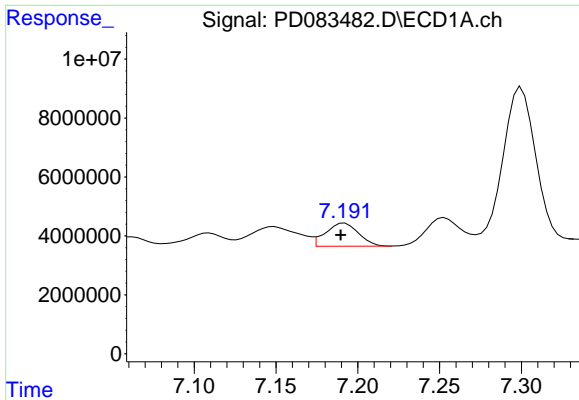
#24 Toxaphene-3

R.T.: 7.109 min
Delta R.T.: 0.012 min
Response: 7373990
Conc: 151.67 ng/ml

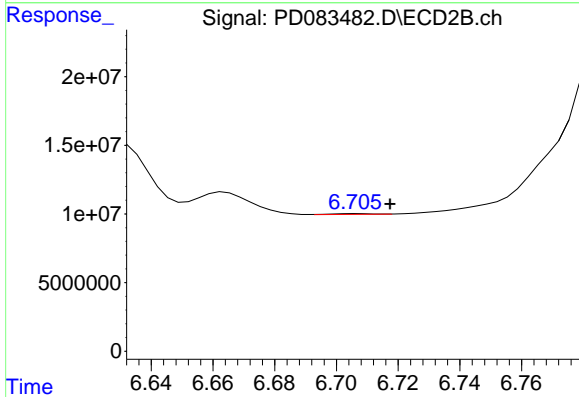


#24 Toxaphene-3

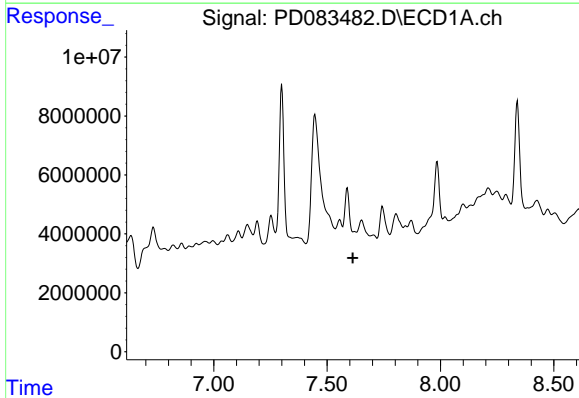
R.T.: 6.570 min
Delta R.T.: -0.022 min
Response: 3800830
Conc: 29.73 ng/ml



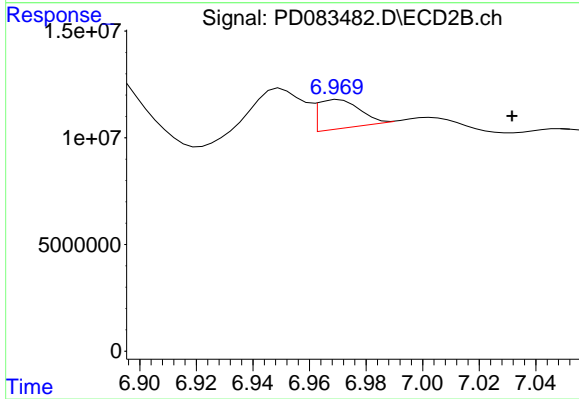
#25 Toxaphene-4
 R.T.: 7.192 min
 Delta R.T.: 0.002 min
 Response: 10929332
 Conc: 302.03 ng/ml



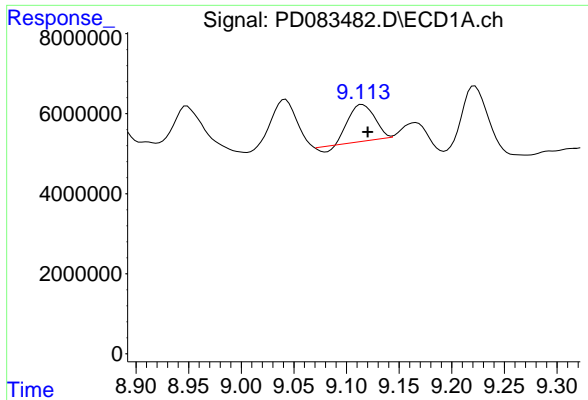
#25 Toxaphene-4
 R.T.: 6.707 min
 Delta R.T.: -0.011 min
 Response: 436190
 Conc: 2.44 ng/ml



#26 Toxaphene-5
 R.T.: 7.556 min
 Delta R.T.: -0.057 min
 Response: -240275
 Conc: N.D.



#26 Toxaphene-5
 R.T.: 6.970 min
 Delta R.T.: -0.061 min
 Response: 13892459
 Conc: 197.52 ng/ml



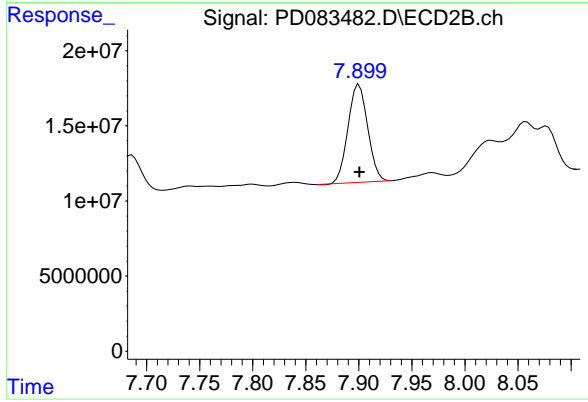
#27 Decachlorobiphenyl

R.T.: 9.115 min

Delta R.T.: -0.005 min

Response: 15156175

Conc: 7.79 ng/ml



#27 Decachlorobiphenyl

R.T.: 7.900 min

Delta R.T.: 0.000 min

Response: 84067856

Conc: 13.84 ng/ml