

Data Path : Z:\pestpcbsrv\HPCHEM1\ECD_D\Data\PD060724\
 Data File : PD083490.D
 Signal(s) : Signal #1: ECD1A.ch Signal #2: ECD2B.ch
 Acq On : 07 Jun 2024 03:12
 Operator : AR\AJ
 Sample : P2590-15MS
 Misc :
 ALS Vial : 38 Sample Multiplier: 1

Integration File signal 1: autoint1.e
 Integration File signal 2: autoint2.e
 Quant Time: Jun 07 08:19:31 2024
 Quant Method : Z:\pestpcbsrv\HPCHEM1\ECD_D\Method\PD060724CLP.M
 Quant Title : GC Extractables
 QLast Update : Fri Jun 07 04:03:14 2024
 Response via : Initial Calibration
 Integrator: ChemStation

Volume Inj. : 1 µl
 Signal #1 Phase : ZB-MR2 Signal #2 Phase: ZB-MR2
 Signal #1 Info : 30M x 0.32mm x0.5 Signal #2 Info : 30M x 0.32mm x 0.25µm

Compound	RT#1	RT#2	Resp#1	Resp#2	ng/ml	ng/ml

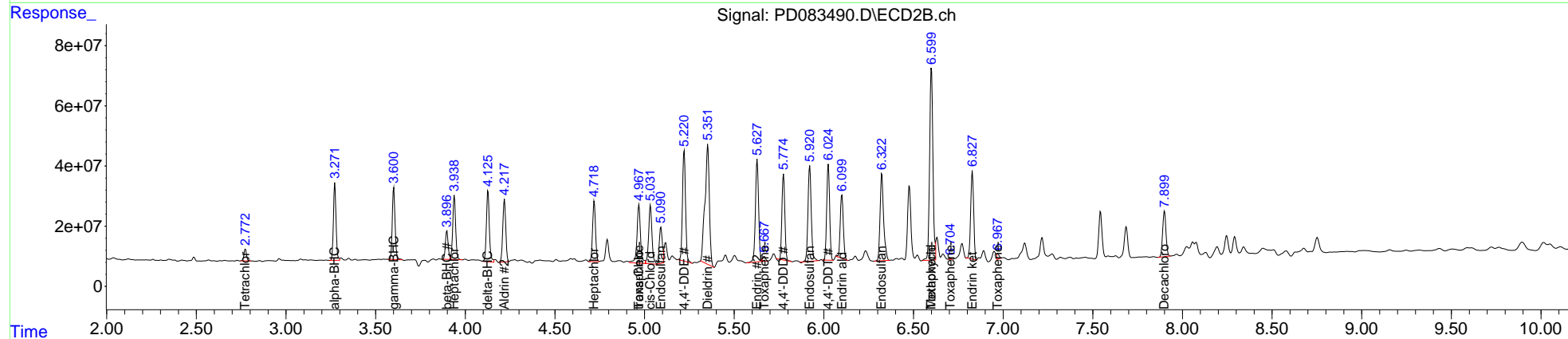
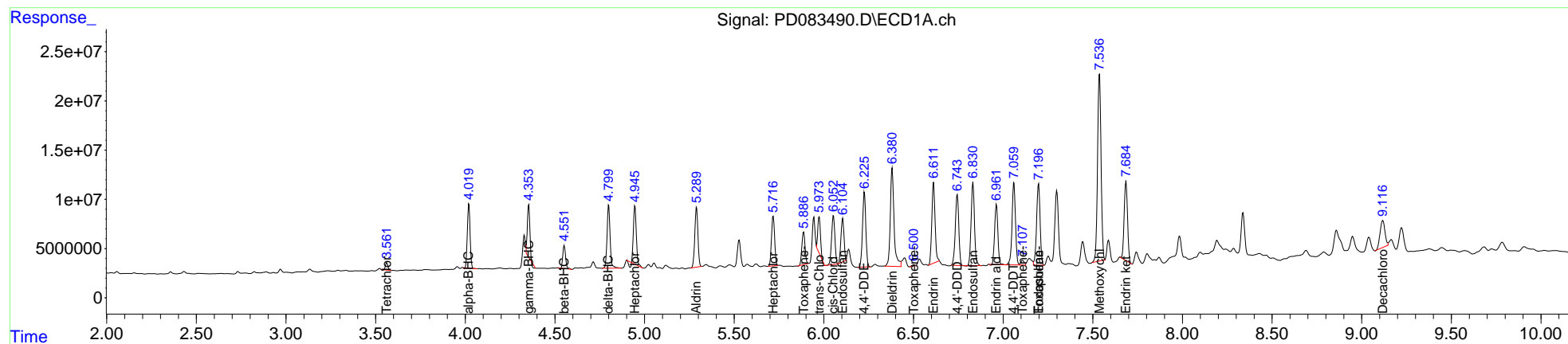
System Monitoring Compounds						
1) SA Tetrachlo...	3.562	2.773	6831658	39378803	5.234	7.224 #
2) SA Decachlor...	9.118	7.900	51321026	195.8E6	26.393	32.241
Target Compounds						
2) A alpha-BHC	4.020	3.273	69489426	260.7E6	31.311	30.582
3) MA gamma-BHC...	4.354	3.601	48794786	258.4E6	22.428	33.090 #
4) MA Heptachlor	4.946	3.939	62663572	239.7E6	25.795	30.610
5) MB Aldrin	5.290	4.219	73445405	238.6E6	30.915	30.876
6) B beta-BHC	4.552	3.898	24634250	100.6E6	24.444	28.182
7) B delta-BHC	4.800	4.127	75818467	269.2E6	28.862	31.564
8) B Heptachlo...	5.717	4.719	61159157	226.2E6	29.612	30.915
9) A Endosulfan I	6.105	5.091	52109148	138.8E6	26.646	20.995
10) B trans-Chl...	5.974	4.969	37732242	261.3E6	18.531	35.971 #
11) B cis-Chlor...	6.054	5.033	63387019	250.0E6	30.439	33.951
12) B 4,4'-DDE	6.226	5.221	96909988	434.0E6	46.723	61.065 #
13) MA Dieldrin	6.381	5.353	146.1E6	676.1E6	70.678	92.804 #
14) MA Endrin	6.612	5.628	102.9E6	419.4E6	60.900	64.848
15) B Endosulfa...	6.832	5.921	109.2E6	400.1E6	60.713	63.054
16) A 4,4'-DDD	6.744	5.775	97047137	315.8E6	66.229	56.014
17) MA 4,4'-DDT	7.060	6.025	111.0E6	359.5E6	73.654	63.503
18) B Endrin al...	6.963	6.101	76353422	252.7E6	57.241	52.761
19) B Endosulfa...	7.198	6.323	112.7E6	399.3E6	65.890	64.636
20) A Methoxychlor	7.537	6.600	258.9E6	818.0E6	299.249	281.450
21) B Endrin ke...	7.685	6.828	105.4E6	334.6E6	56.522	49.771
22) Toxaphene-1	5.887	4.969	40431090	261.3E6	6677.274	7215.511
23) Toxaphene-2	6.502	5.668	1325235	18301013	77.037	459.570 #
24) Toxaphene-3	7.108	6.600	6408926	818.0E6	131.818	6399.189 #
25) Toxaphene-4	7.198	6.706	112.7E6	1274246	3115.092	7.127 #
26) Toxaphene-5	0.000	6.970f	0	17236422	N.D.	245.060

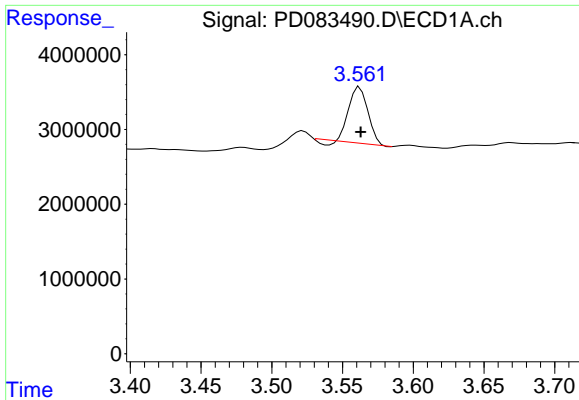
(f)=RT Delta > 1/2 Window (#)=Amounts differ by > 25% (m)=manual int.

Data Path : Z:\pestpcbsrv\HPCHEM1\ECD_D\Data\PD060724\
 Data File : PD083490.D
 Signal(s) : Signal #1: ECD1A.ch Signal #2: ECD2B.ch
 Acq On : 07 Jun 2024 03:12
 Operator : AR\AJ
 Sample : P2590-15MS
 Misc :
 ALS Vial : 38 Sample Multiplier: 1

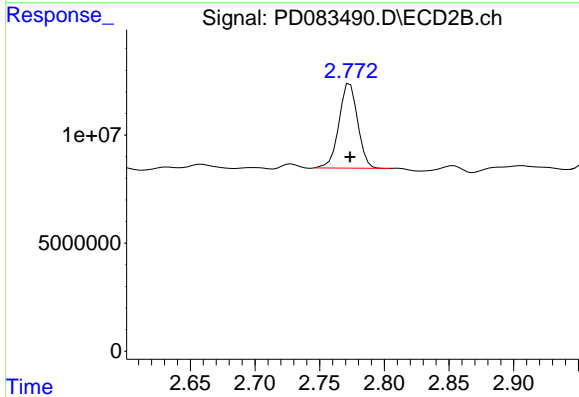
Integration File signal 1: autoint1.e
 Integration File signal 2: autoint2.e
 Quant Time: Jun 07 08:19:31 2024
 Quant Method : Z:\pestpcbsrv\HPCHEM1\ECD_D\Method\PD060724CLP.M
 Quant Title : GC Extractables
 QLast Update : Fri Jun 07 04:03:14 2024
 Response via : Initial Calibration
 Integrator: ChemStation

Volume Inj. : 1 µl
 Signal #1 Phase : ZB-MR1 Signal #2 Phase: ZB-MR2
 Signal #1 Info : 30M x 0.32mm x0.5 Signal #2 Info : 30M x 0.32mm x 0.25µm

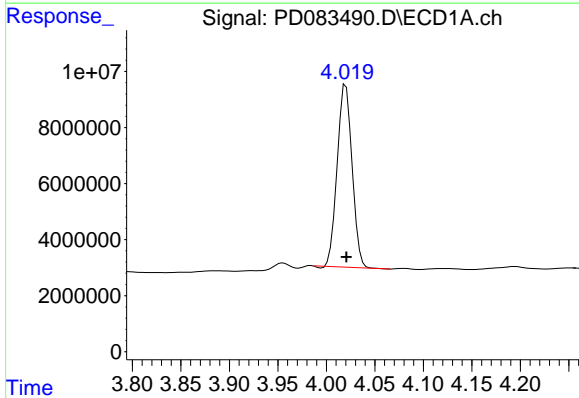




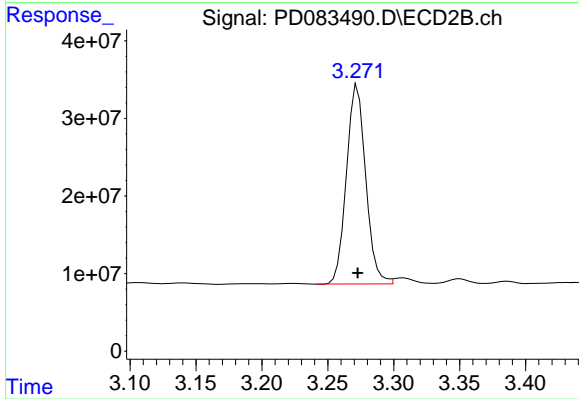
#1 Tetrachloro-m-xylene
 R.T.: 3.562 min
 Delta R.T.: 0.000 min
 Response: 6831658
 Conc: 5.23 ng/ml



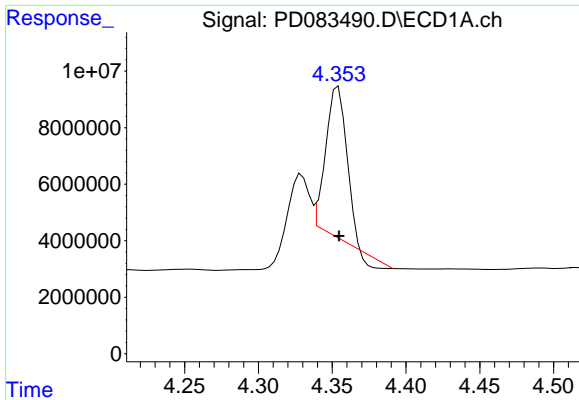
#1 Tetrachloro-m-xylene
 R.T.: 2.773 min
 Delta R.T.: 0.000 min
 Response: 39378803
 Conc: 7.22 ng/ml



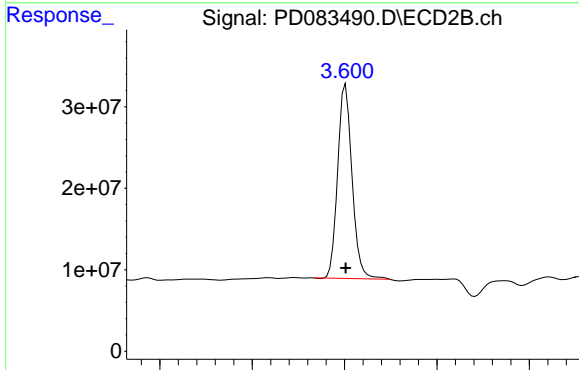
#2 alpha-BHC
 R.T.: 4.020 min
 Delta R.T.: 0.000 min
 Response: 69489426
 Conc: 31.31 ng/ml



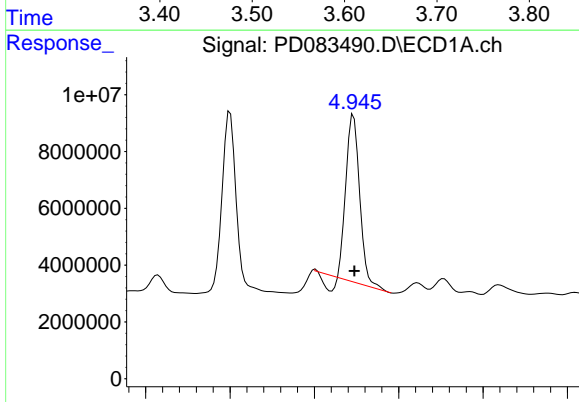
#2 alpha-BHC
 R.T.: 3.273 min
 Delta R.T.: 0.000 min
 Response: 260710156
 Conc: 30.58 ng/ml



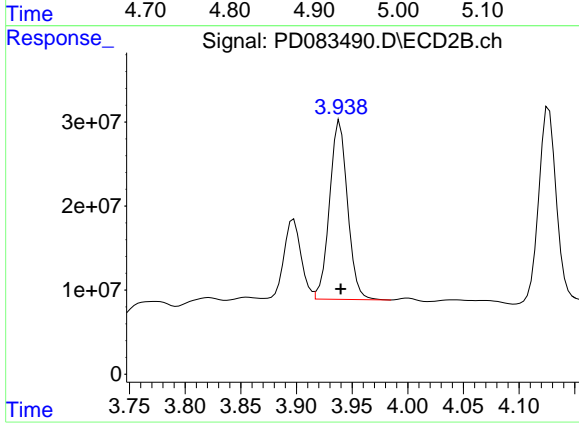
#3 gamma-BHC (Lindane)
R.T.: 4.354 min
Delta R.T.: 0.000 min
Response: 48794786
Conc: 22.43 ng/ml



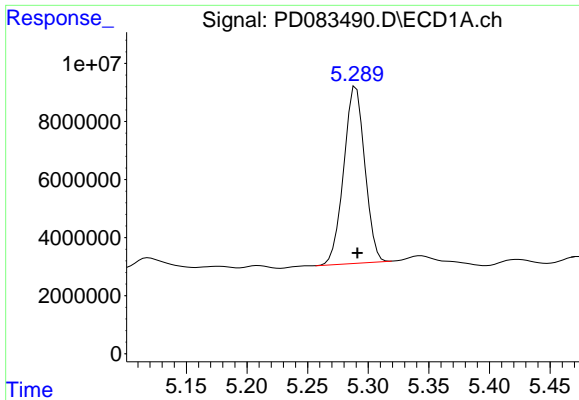
#3 gamma-BHC (Lindane)
R.T.: 3.601 min
Delta R.T.: 0.000 min
Response: 258402701
Conc: 33.09 ng/ml



#4 Heptachlor
R.T.: 4.946 min
Delta R.T.: 0.000 min
Response: 62663572
Conc: 25.79 ng/ml



#4 Heptachlor
R.T.: 3.939 min
Delta R.T.: 0.000 min
Response: 239657260
Conc: 30.61 ng/ml



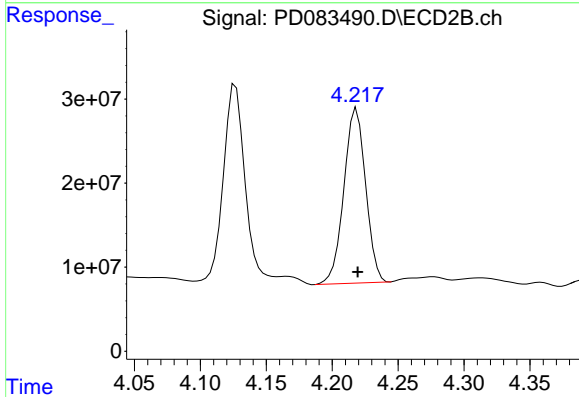
#5 Aldrin

R.T.: 5.290 min

Delta R.T.: -0.001 min

Response: 73445405

Conc: 30.91 ng/ml



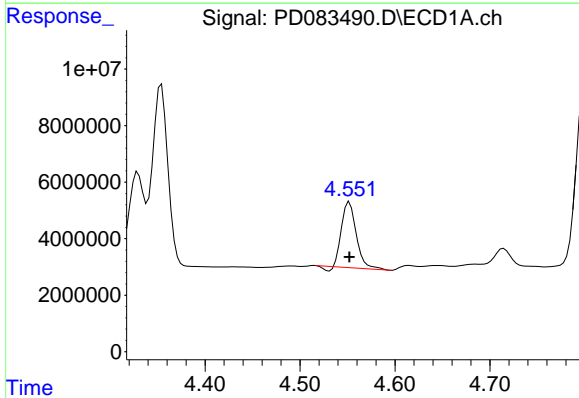
#5 Aldrin

R.T.: 4.219 min

Delta R.T.: 0.000 min

Response: 238582308

Conc: 30.88 ng/ml



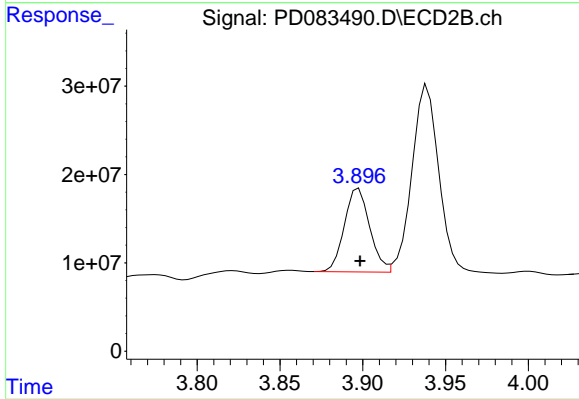
#6 beta-BHC

R.T.: 4.552 min

Delta R.T.: 0.000 min

Response: 24634250

Conc: 24.44 ng/ml



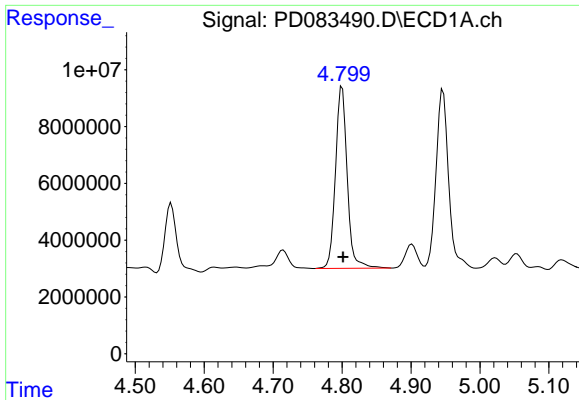
#6 beta-BHC

R.T.: 3.898 min

Delta R.T.: 0.000 min

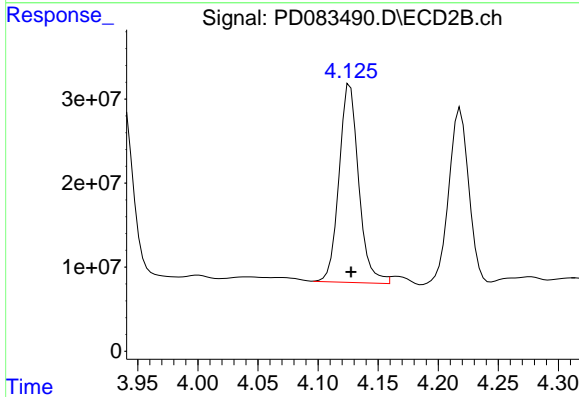
Response: 100559983

Conc: 28.18 ng/ml



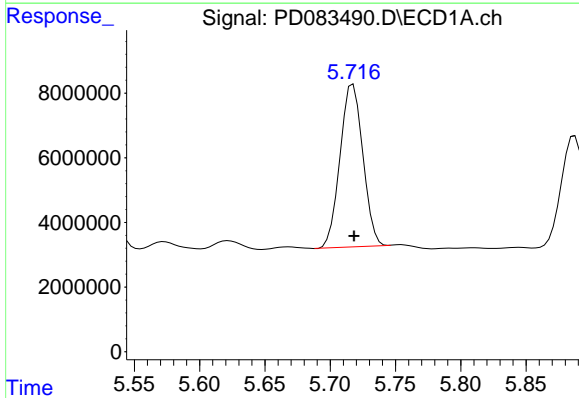
#7 delta-BHC

R.T.: 4.800 min
Delta R.T.: -0.001 min
Response: 75818467
Conc: 28.86 ng/ml



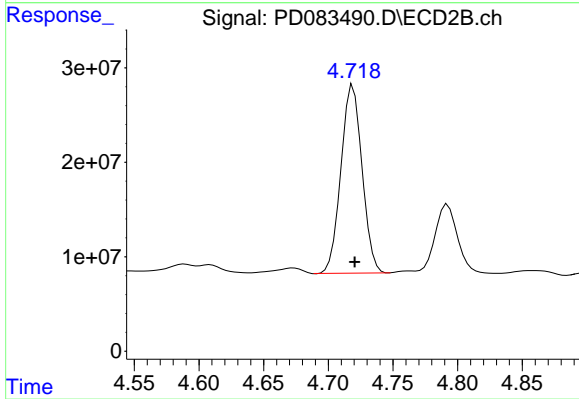
#7 delta-BHC

R.T.: 4.127 min
Delta R.T.: 0.000 min
Response: 269159295
Conc: 31.56 ng/ml



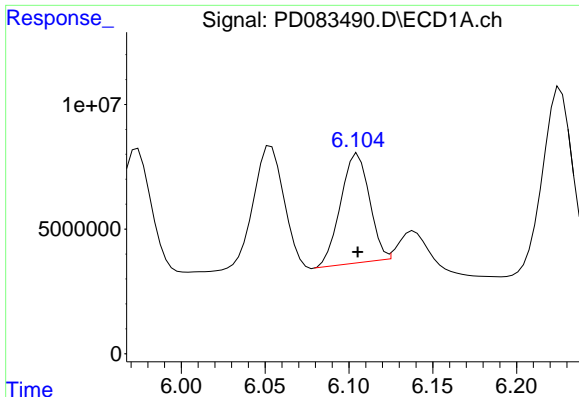
#8 Heptachlor epoxide

R.T.: 5.717 min
Delta R.T.: 0.000 min
Response: 61159157
Conc: 29.61 ng/ml



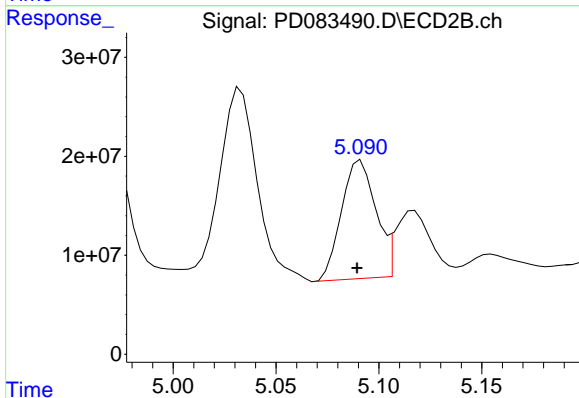
#8 Heptachlor epoxide

R.T.: 4.719 min
Delta R.T.: -0.001 min
Response: 226210990
Conc: 30.91 ng/ml



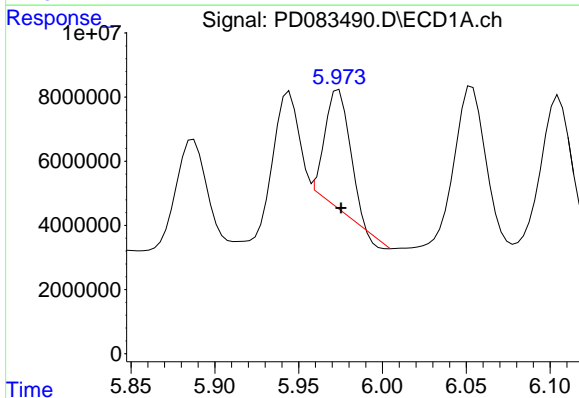
#9 Endosulfan I

R.T.: 6.105 min
 Delta R.T.: 0.000 min
 Response: 52109148
 Conc: 26.65 ng/ml



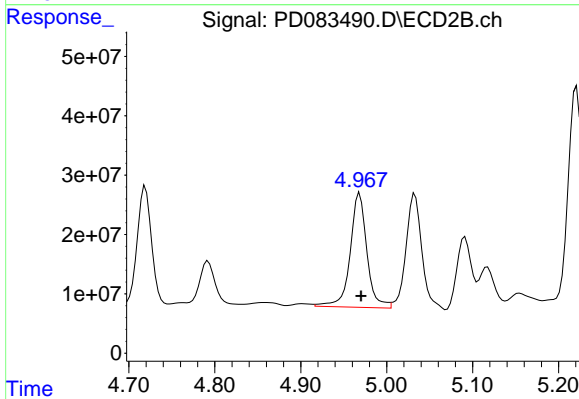
#9 Endosulfan I

R.T.: 5.091 min
 Delta R.T.: 0.002 min
 Response: 138790205
 Conc: 21.00 ng/ml



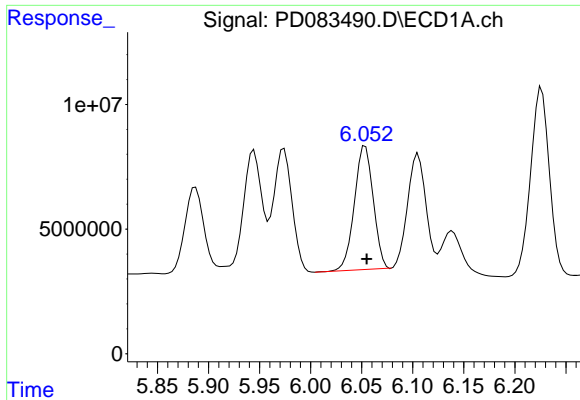
#10 trans-Chlordane

R.T.: 5.974 min
 Delta R.T.: -0.001 min
 Response: 37732242
 Conc: 18.53 ng/ml

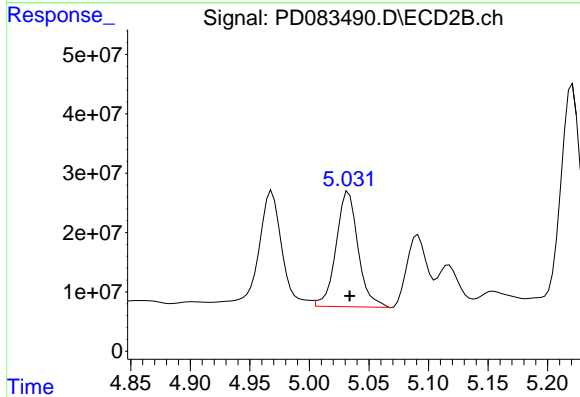


#10 trans-Chlordane

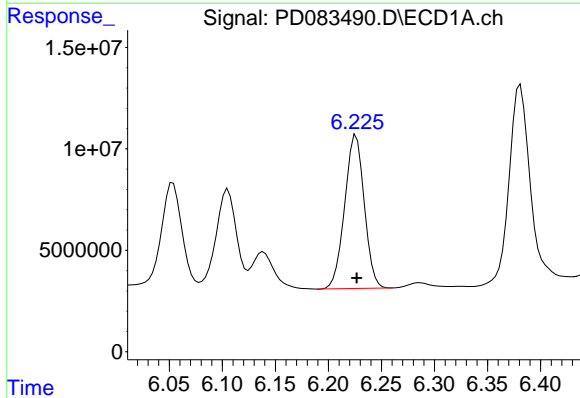
R.T.: 4.969 min
 Delta R.T.: -0.002 min
 Response: 261267265
 Conc: 35.97 ng/ml



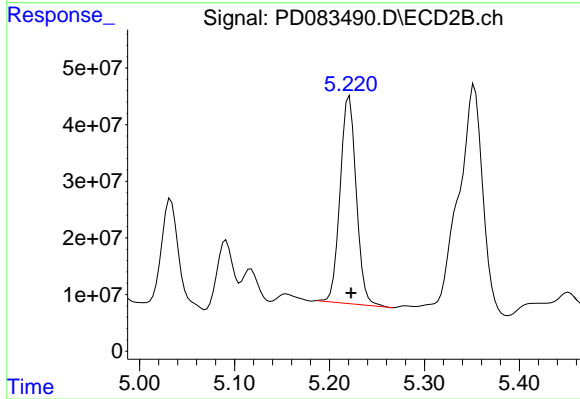
#11 cis-Chlordane
R.T.: 6.054 min
Delta R.T.: -0.001 min
Response: 63387019
Conc: 30.44 ng/ml



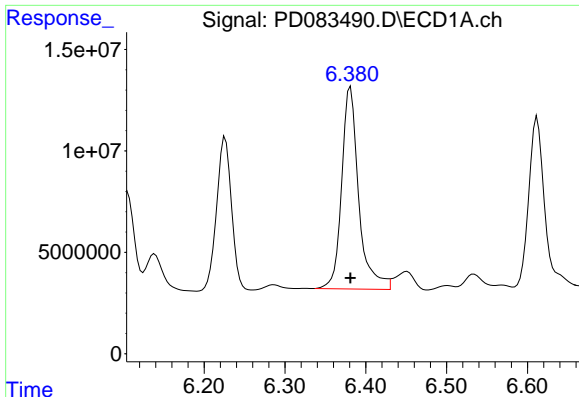
#11 cis-Chlordane
R.T.: 5.033 min
Delta R.T.: -0.001 min
Response: 249965034
Conc: 33.95 ng/ml



#12 4,4'-DDE
R.T.: 6.226 min
Delta R.T.: 0.000 min
Response: 96909988
Conc: 46.72 ng/ml

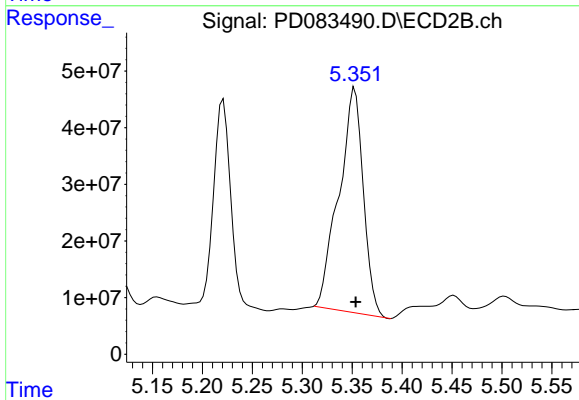


#12 4,4'-DDE
R.T.: 5.221 min
Delta R.T.: -0.002 min
Response: 433964690
Conc: 61.06 ng/ml



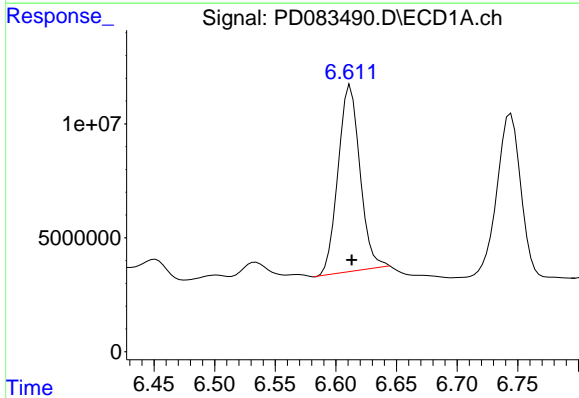
#13 Dieldrin

R.T.: 6.381 min
Delta R.T.: 0.000 min
Response: 146140026
Conc: 70.68 ng/ml



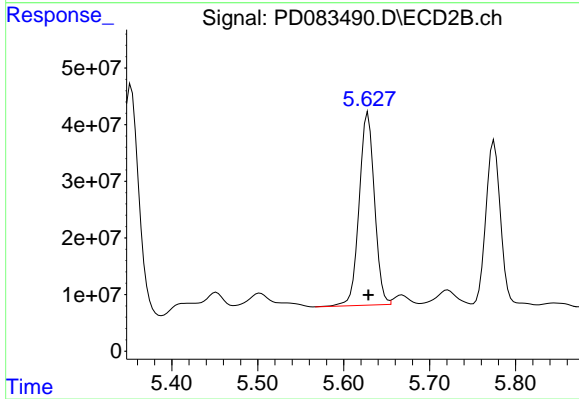
#13 Dieldrin

R.T.: 5.353 min
Delta R.T.: 0.000 min
Response: 676091143
Conc: 92.80 ng/ml



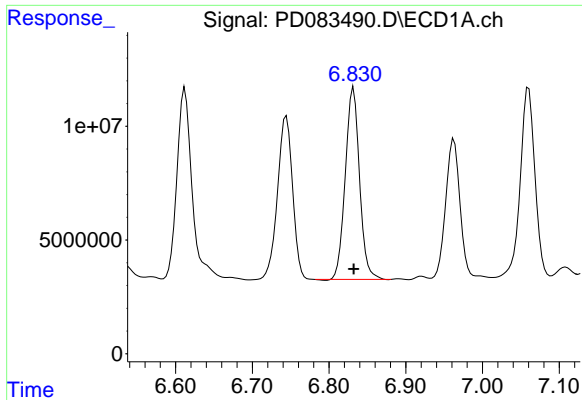
#14 Endrin

R.T.: 6.612 min
Delta R.T.: 0.000 min
Response: 102877843
Conc: 60.90 ng/ml



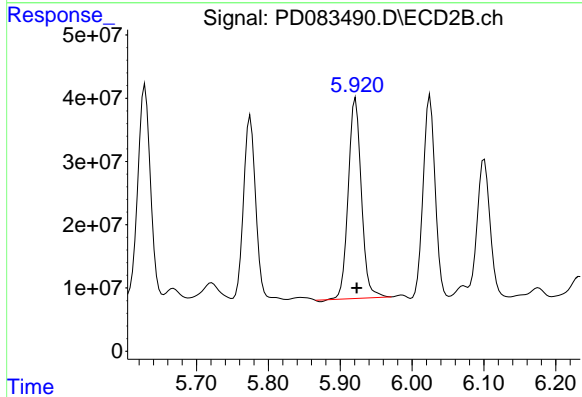
#14 Endrin

R.T.: 5.628 min
Delta R.T.: 0.000 min
Response: 419398742
Conc: 64.85 ng/ml



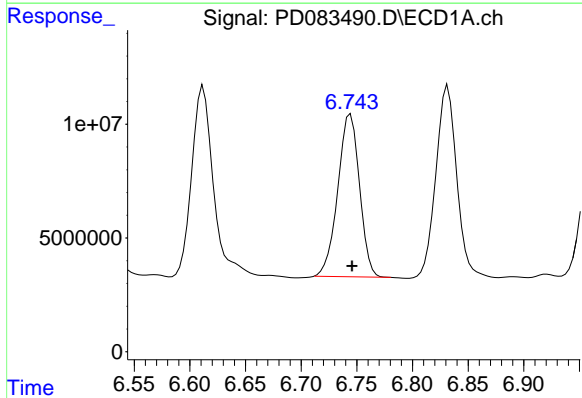
#15 Endosulfan II

R.T.: 6.832 min
Delta R.T.: 0.000 min
Response: 109207810
Conc: 60.71 ng/ml



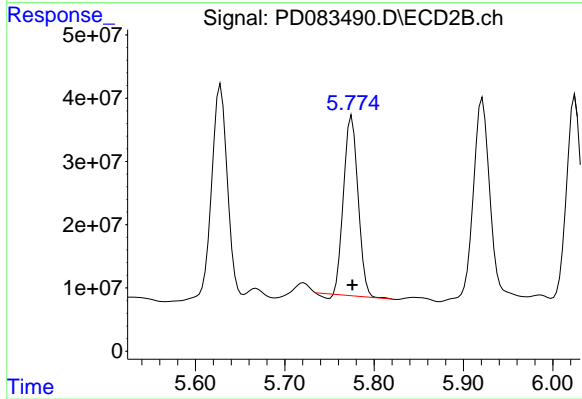
#15 Endosulfan II

R.T.: 5.921 min
Delta R.T.: -0.002 min
Response: 400110593
Conc: 63.05 ng/ml



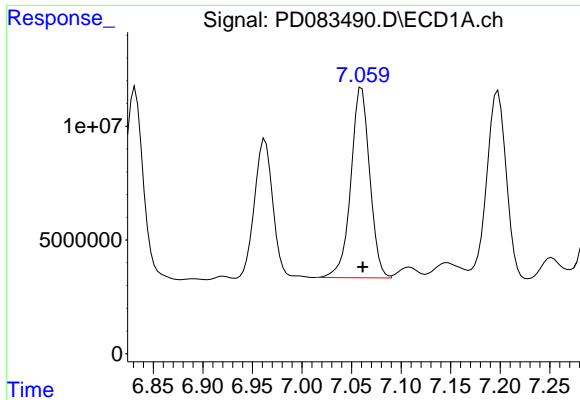
#16 4,4'-DDD

R.T.: 6.744 min
Delta R.T.: -0.001 min
Response: 97047137
Conc: 66.23 ng/ml



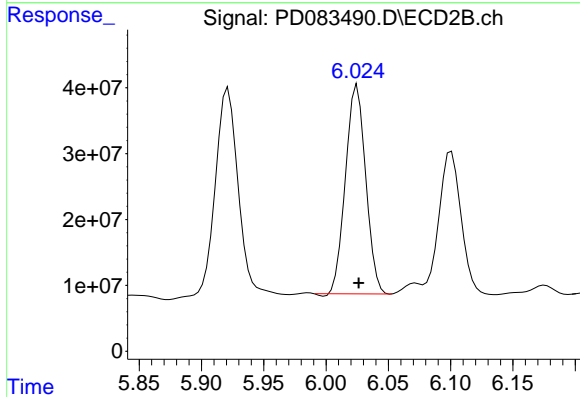
#16 4,4'-DDD

R.T.: 5.775 min
Delta R.T.: 0.000 min
Response: 315774385
Conc: 56.01 ng/ml



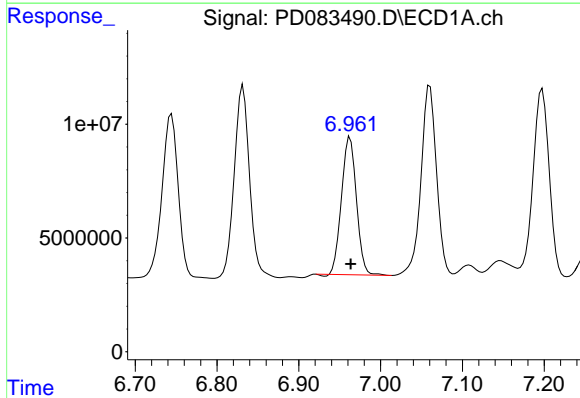
#17 4,4'-DDT

R.T.: 7.060 min
 Delta R.T.: -0.001 min
 Response: 110956039
 Conc: 73.65 ng/ml



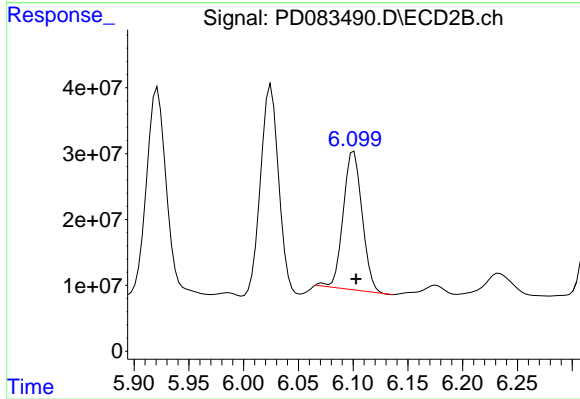
#17 4,4'-DDT

R.T.: 6.025 min
 Delta R.T.: -0.001 min
 Response: 359463112
 Conc: 63.50 ng/ml



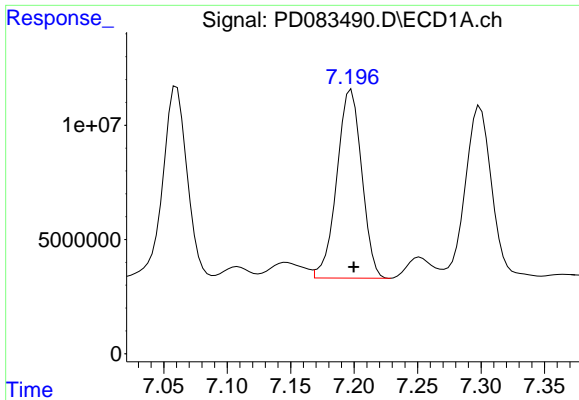
#18 Endrin aldehyde

R.T.: 6.963 min
 Delta R.T.: 0.000 min
 Response: 76353422
 Conc: 57.24 ng/ml



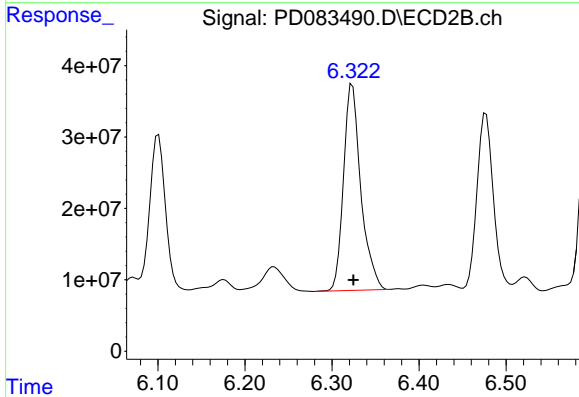
#18 Endrin aldehyde

R.T.: 6.101 min
 Delta R.T.: -0.002 min
 Response: 252736895
 Conc: 52.76 ng/ml



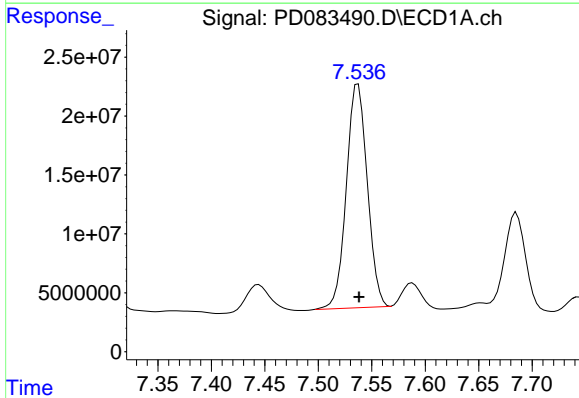
#19 Endosulfan Sulfate

R.T.: 7.198 min
Delta R.T.: -0.002 min
Response: 112724804
Conc: 65.89 ng/ml



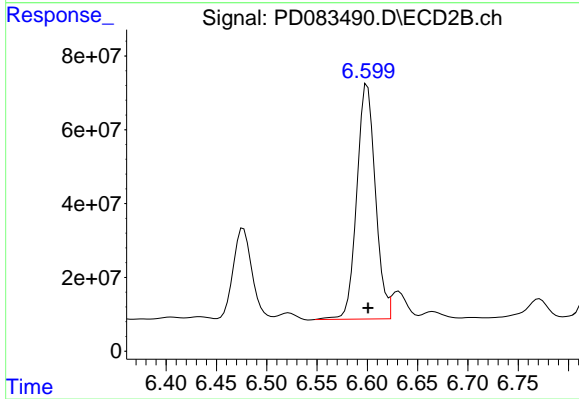
#19 Endosulfan Sulfate

R.T.: 6.323 min
Delta R.T.: -0.001 min
Response: 399346629
Conc: 64.64 ng/ml



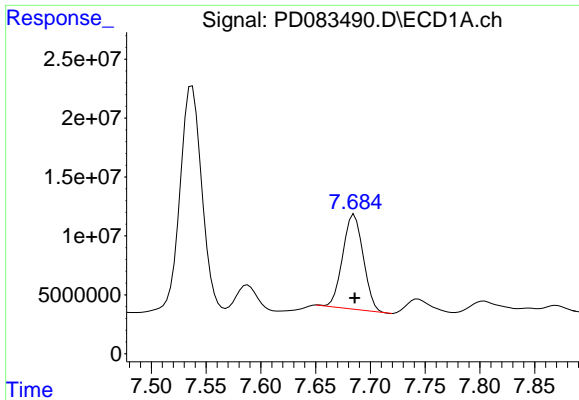
#20 Methoxychlor

R.T.: 7.537 min
Delta R.T.: 0.000 min
Response: 258901606
Conc: 299.25 ng/ml

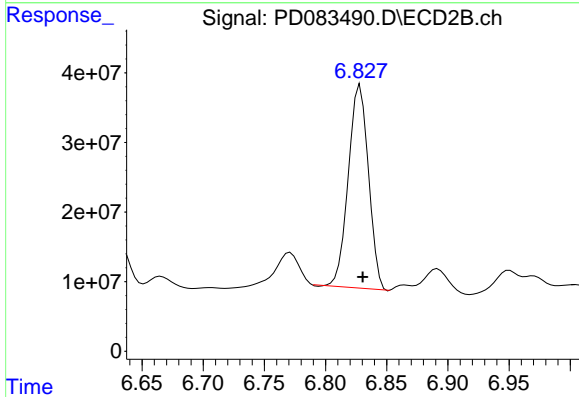


#20 Methoxychlor

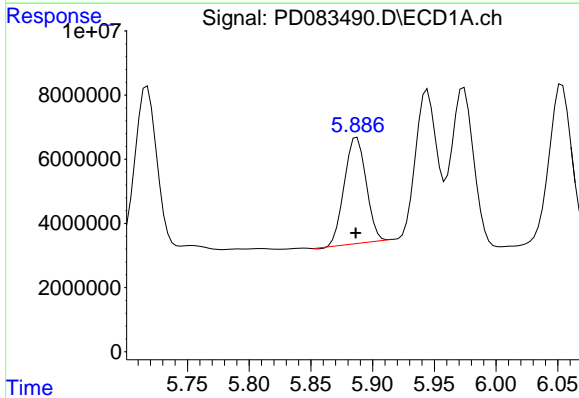
R.T.: 6.600 min
Delta R.T.: 0.000 min
Response: 818009717
Conc: 281.45 ng/ml



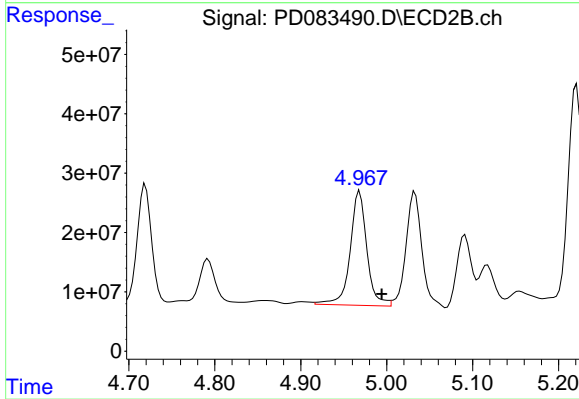
#21 Endrin ketone
 R.T.: 7.685 min
 Delta R.T.: 0.000 min
 Response: 105368819
 Conc: 56.52 ng/ml



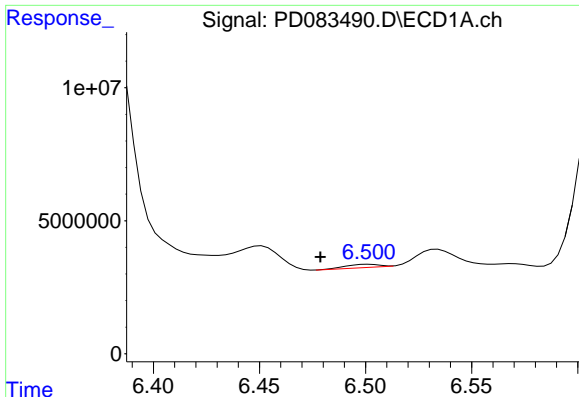
#21 Endrin ketone
 R.T.: 6.828 min
 Delta R.T.: -0.002 min
 Response: 334589747
 Conc: 49.77 ng/ml



#22 Toxaphene-1
 R.T.: 5.887 min
 Delta R.T.: 0.001 min
 Response: 40431090
 Conc: 6677.27 ng/ml

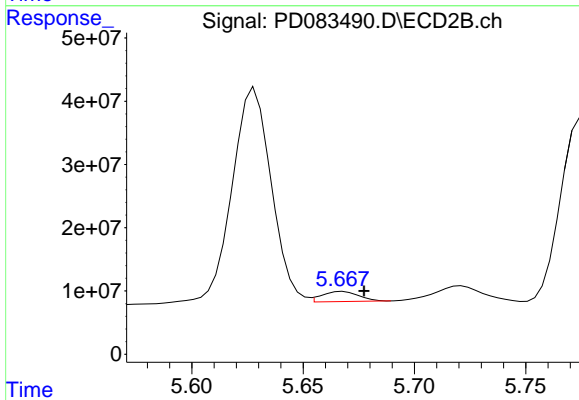


#22 Toxaphene-1
 R.T.: 4.969 min
 Delta R.T.: -0.026 min
 Response: 261267265
 Conc: 7215.51 ng/ml



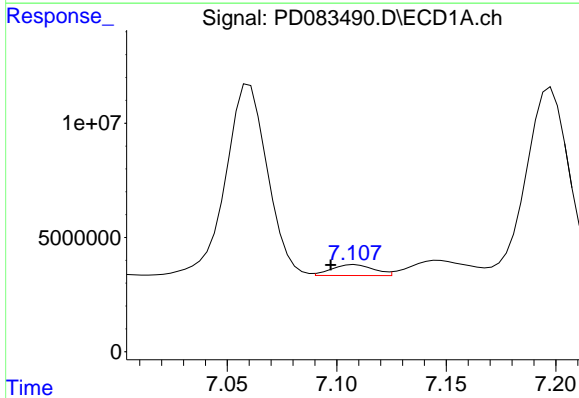
#23 Toxaphene-2

R.T.: 6.502 min
 Delta R.T.: 0.023 min
 Response: 1325235
 Conc: 77.04 ng/ml



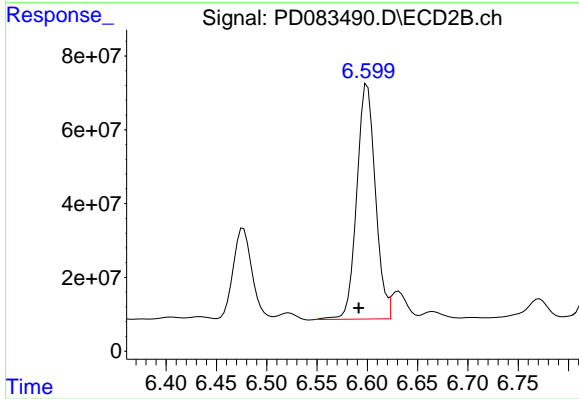
#23 Toxaphene-2

R.T.: 5.668 min
 Delta R.T.: -0.009 min
 Response: 18301013
 Conc: 459.57 ng/ml



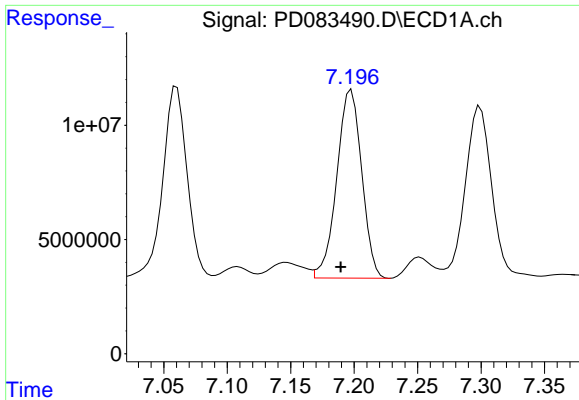
#24 Toxaphene-3

R.T.: 7.108 min
 Delta R.T.: 0.011 min
 Response: 6408926
 Conc: 131.82 ng/ml

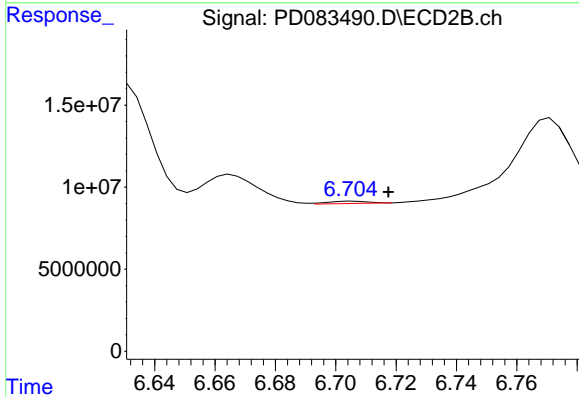


#24 Toxaphene-3

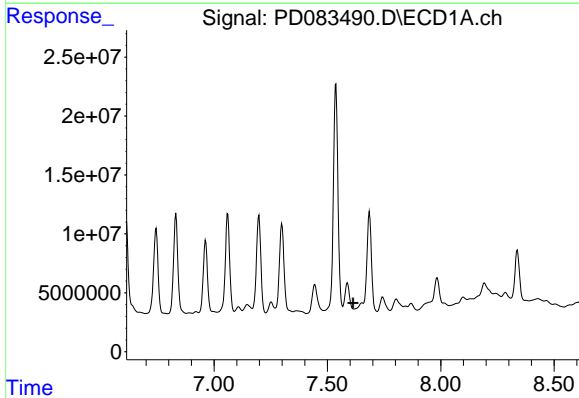
R.T.: 6.600 min
 Delta R.T.: 0.008 min
 Response: 818009717
 Conc: 6399.19 ng/ml



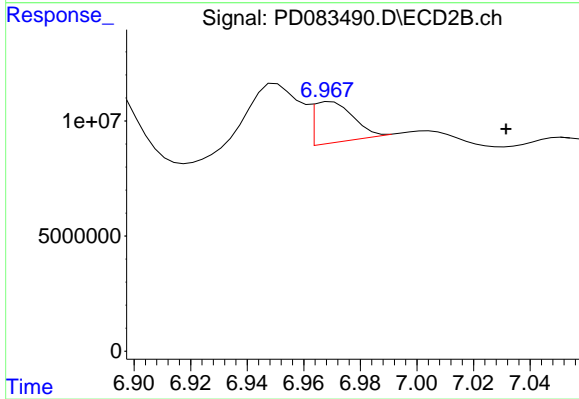
#25 Toxaphene-4
 R.T.: 7.198 min
 Delta R.T.: 0.008 min
 Response: 112724804
 Conc: 3115.09 ng/ml



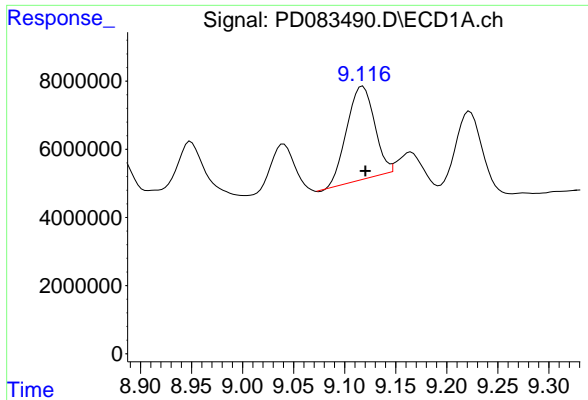
#25 Toxaphene-4
 R.T.: 6.706 min
 Delta R.T.: -0.011 min
 Response: 1274246
 Conc: 7.13 ng/ml



#26 Toxaphene-5
 R.T.: 0.000 min
 Exp R.T. : 7.613 min
 Response: 0
 Conc: N.D.

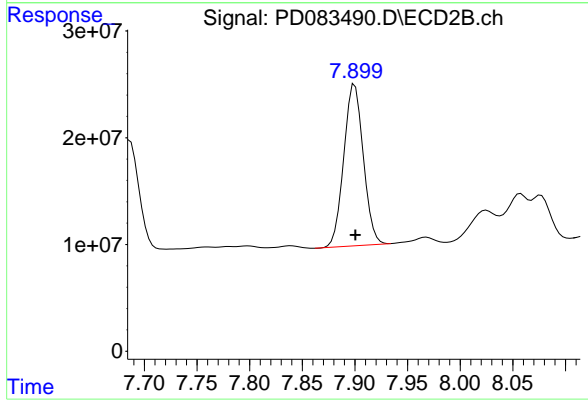


#26 Toxaphene-5
 R.T.: 6.970 min
 Delta R.T.: -0.062 min
 Response: 17236422
 Conc: 245.06 ng/ml



#27 Decachlorobiphenyl

R.T.: 9.118 min
Delta R.T.: -0.002 min
Response: 51321026
Conc: 26.39 ng/ml



#27 Decachlorobiphenyl

R.T.: 7.900 min
Delta R.T.: 0.000 min
Response: 195772144
Conc: 32.24 ng/ml