

Quantitation Report (Qedit)

Data Path : Z:\pestpcbsrv\HPCHEM1\ECD\_D\Data\PD060724\  
Data File : PD083496.D  
Signal(s) : Signal #1: ECD1A.ch Signal #2: ECD2B.ch  
Acq On : 07 Jun 2024 05:52  
Operator : AR\AJ  
Sample : PB161172BL  
Misc :  
ALS Vial : 44 Sample Multiplier: 1

Instrument :  
ECD\_D  
ClientSampleId :  
PBLK172

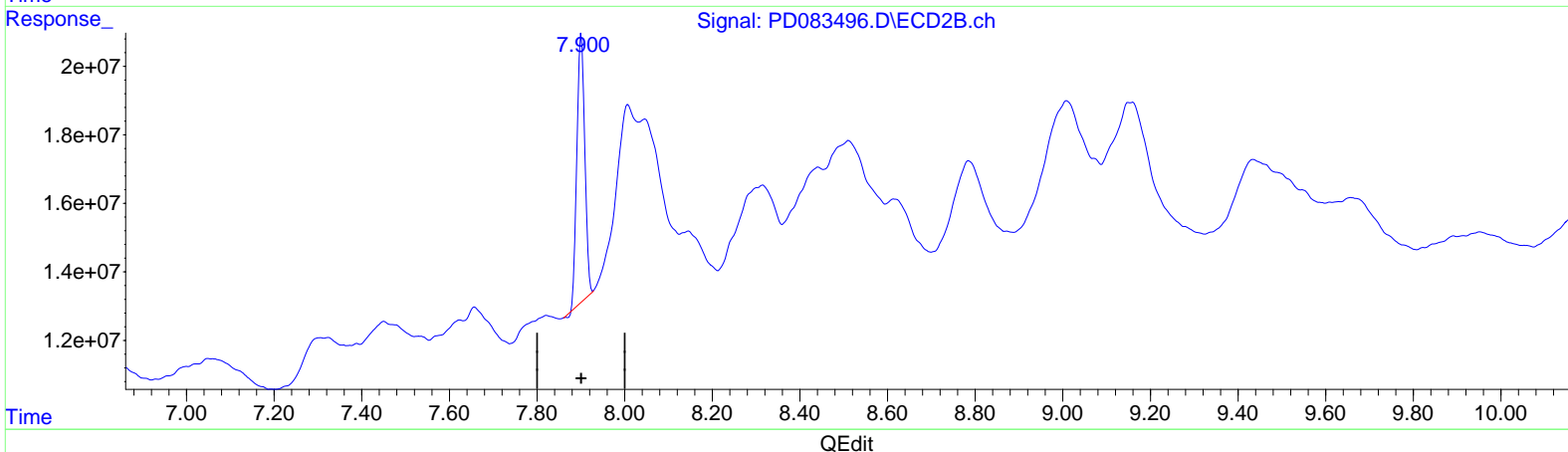
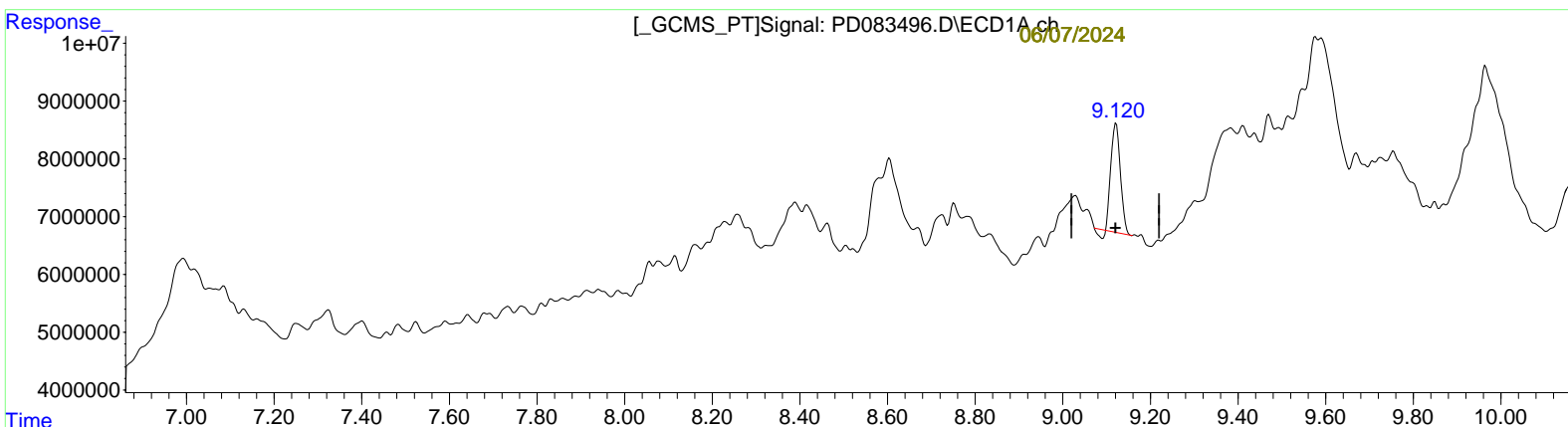
Manual IntegrationsAPPROVED

Reviewed By :Yogesh  
Patel

Integration File signal 1: autoint1.e  
Integration File signal 2: autoint2.e  
Quant Time: Jun 07 10:18:17 2024  
Quant Method : Z:\pestpcbsrv\HPCHEM1\ECD\_D\Method\PD060724CLP.M  
Quant Title : GC Extractables  
QLast Update : Fri Jun 07 04:03:14 2024  
Response via : Initial Calibration  
Integrator: ChemStation

06/07/2024  
Supervised By :Ankita  
Jodhani

Volume Inj. : 1 µl  
Signal #1 Phase : ZB-MR1 Signal #2 Phase: ZB-MR2  
Signal #1 Info : 30M x 0.32mm x0.5 Signal #2 Info : 30M x 0.32mm x 0.25µm



(27) Decachlorobiphenyl (SA)  
9.122min 14.320 ng/ml  
response 27845790

(27) Decachlorobiphenyl #2 (SA)  
7.901min 16.047 ng/ml  
response 97439968

Data Path : Z:\pestpcbsrv\HPCHEM1\ECD\_D\Data\PD060724\  
 Data File : PD083496.D  
 Signal(s) : Signal #1: ECD1A.ch Signal #2: ECD2B.ch  
 Acq On : 07 Jun 2024 05:52  
 Operator : AR\AJ  
 Sample : PB161172BL  
 Misc :  
 ALS Vial : 44 Sample Multiplier: 1

**Instrument :**  
 ECD\_D  
**ClientSampleId :**  
 PBLK172

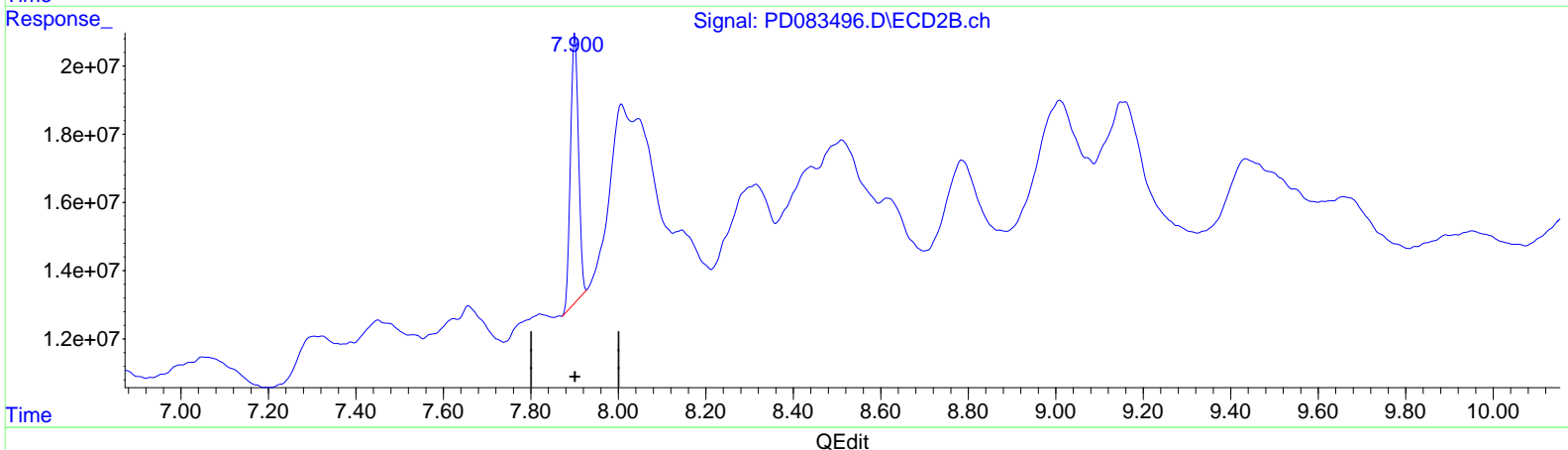
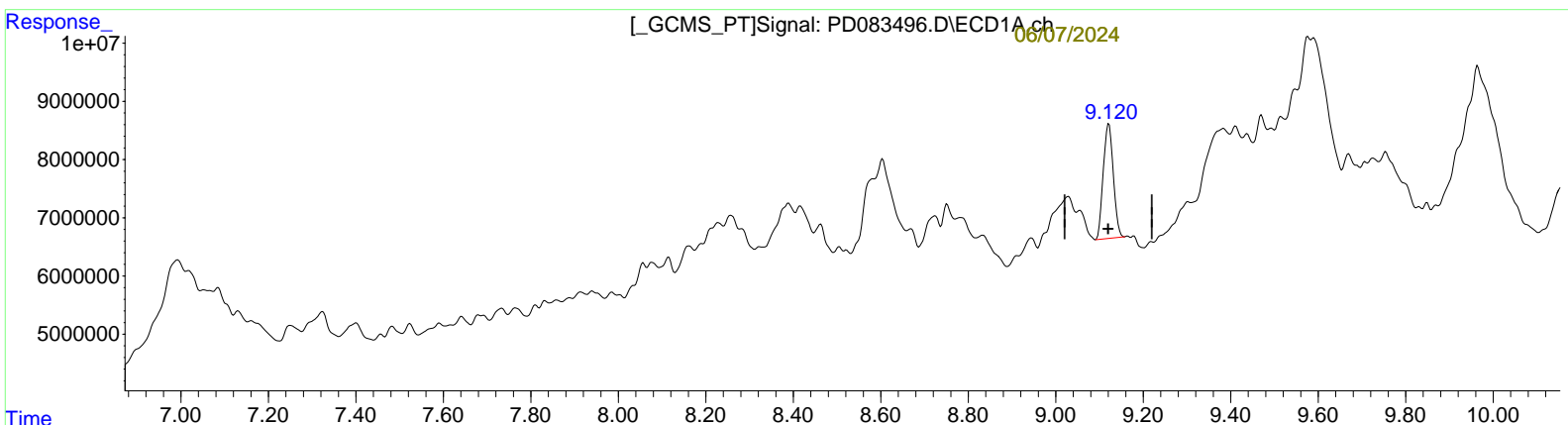
**Manual IntegrationsAPPROVED**

Reviewed By :Yogesh  
 Patel

Integration File signal 1: autoint1.e  
 Integration File signal 2: autoint2.e  
 Quant Time: Jun 07 10:18:17 2024  
 Quant Method : Z:\pestpcbsrv\HPCHEM1\ECD\_D\Method\PD060724CLP.M  
 Quant Title : GC Extractables  
 QLast Update : Fri Jun 07 04:03:14 2024  
 Response via : Initial Calibration  
 Integrator: ChemStation

06/07/2024  
 Supervised By :Ankita  
 Jodhani

Volume Inj. : 1 µl  
 Signal #1 Phase : ZB-MR1 Signal #2 Phase: ZB-MR2  
 Signal #1 Info : 30M x 0.32mm x0.5 Signal #2 Info : 30M x 0.32mm x 0.25µm



(27) Decachlorobiphenyl (SA)  
 9.120min 16.218 ng/ml m  
 response 31535864

(27) Decachlorobiphenyl #2 (SA)  
 7.900min 16.538 ng/ml m  
 response 100423054