

Data Path : Z:\pestpcbsrv\HPCHEM1\ECD\_D\Data\PD060824\  
 Data File : PD083521.D  
 Signal(s) : Signal #1: ECD1A.ch Signal #2: ECD2B.ch  
 Acq On : 07 Jun 2024 17:20  
 Operator : AR\AJ  
 Sample : P2648-09  
 Misc :  
 ALS Vial : 19 Sample Multiplier: 1

**Instrument :**  
 ECD\_D  
**ClientSampleId :**  
 BHBZ8

**Manual Integrations**  
**APPROVED**  
 Reviewed By :Abdul Mirza 06/10/2024  
 Supervised By :Ankita Jodhani 06/10/2024

Integration File signal 1: autoint1.e  
 Integration File signal 2: autoint2.e  
 Quant Time: Jun 07 21:37:28 2024  
 Quant Method : Z:\pestpcbsrv\HPCHEM1\ECD\_D\Method\PD060724CLP.M  
 Quant Title : GC Extractables  
 QLast Update : Fri Jun 07 04:03:14 2024  
 Response via : Initial Calibration  
 Integrator: ChemStation

Volume Inj. : 1 µl  
 Signal #1 Phase : ZB-MR1 Signal #2 Phase: ZB-MR2  
 Signal #1 Info : 30M x 0.32mm x0.5 Signal #2 Info : 30M x 0.32mm x 0.25µm

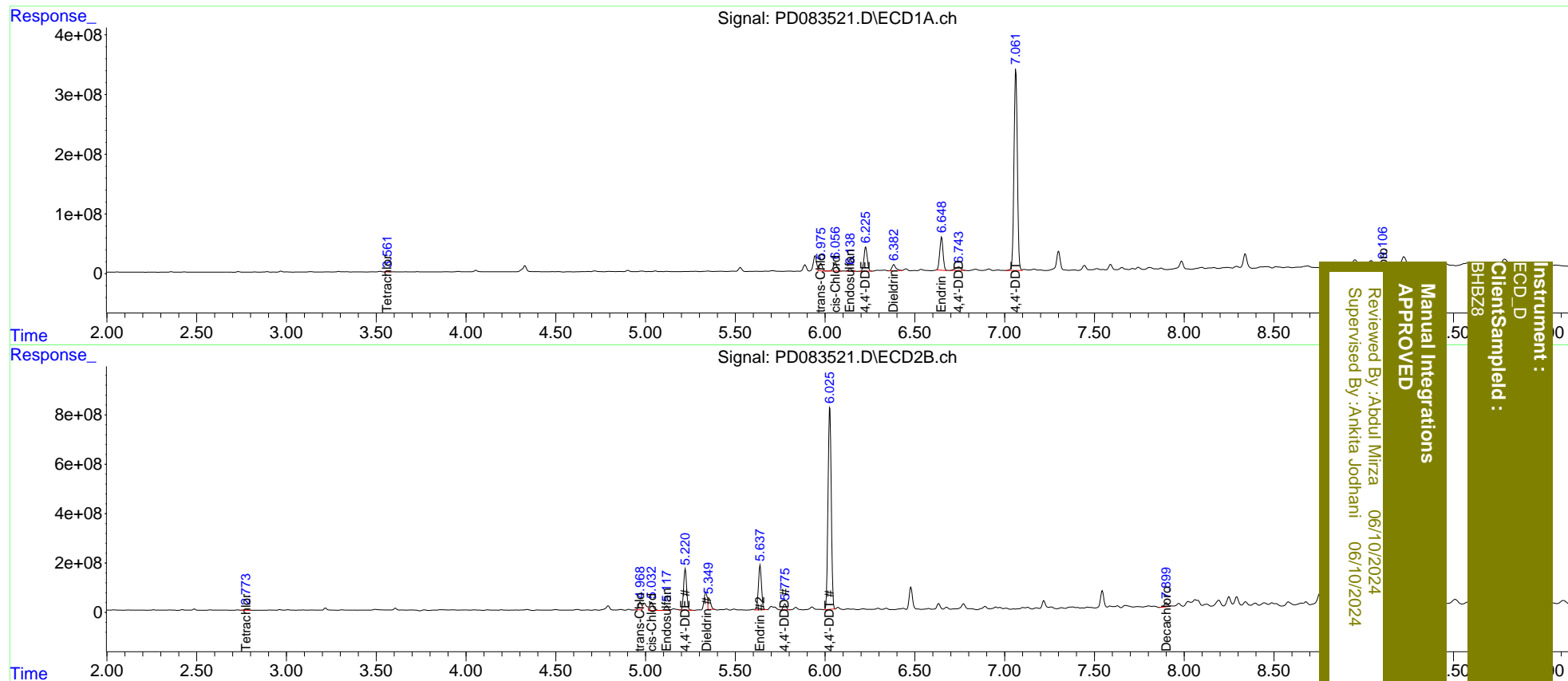
Compound	RT#1	RT#2	Resp#1	Resp#2	ng/ml	ng/ml
-----						
System Monitoring Compounds						
1) SA Tetrachlo...	3.561	2.775	7460696	51506457	5.716m	9.449 #
27) SA Decachlor...	9.106	7.901	94602131	232.6E6	48.651m	38.307
Target Compounds						
9) A Endosulfan I	6.138	5.118	60750415	240.0E6	31.065m	36.298
10) B trans-Chl...	5.975	4.968	159.3E6	367.5E6	78.217m	50.592m#
11) B cis-Chlor...	6.057	5.034	203.6E6	493.5E6	97.773	67.034 #
12) B 4,4'-DDE	6.227	5.222	524.9E6	1939.5E6	253.077	272.910
13) MA Dieldrin	6.382	5.349	155.2E6	472.1E6	75.045m	64.805m
14) MA Endrin	6.648	5.638	712.5E6	2191.8E6	421.786m	338.902
16) A 4,4'-DDD	6.743	5.775	122.9E6	276.1E6	83.857m	48.968m#
17) MA 4,4'-DDT	7.063	6.026	4377.8E6	10193.6E6	2906.025	1800.808 #
-----						

(f)=RT Delta > 1/2 Window (#)=Amounts differ by > 25% (m)=manual int.

Data Path : Z:\pestpcbsrv\HPCHEM1\ECD\_D\Data\PD060824\  
 Data File : PD083521.D  
 Signal(s) : Signal #1: ECD1A.ch Signal #2: ECD2B.ch  
 Acq On : 07 Jun 2024 17:20  
 Operator : AR\AJ  
 Sample : P2648-09  
 Misc :  
 ALS Vial : 19 Sample Multiplier: 1

Integration File signal 1: autoint1.e  
 Integration File signal 2: autoint2.e  
 Quant Time: Jun 07 21:37:28 2024  
 Quant Method : Z:\pestpcbsrv\HPCHEM1\ECD\_D\Method\PD060724CLP.M  
 Quant Title : GC Extractables  
 QLast Update : Fri Jun 07 04:03:14 2024  
 Response via : Initial Calibration  
 Integrator: ChemStation

Volume Inj. : 1 µl  
 Signal #1 Phase : ZB-MR1 Signal #2 Phase: ZB-MR2  
 Signal #1 Info : 30M x 0.32mm x0.5 Signal #2 Info : 30M x 0.32mm x 0.25µm



Instrument :  
 ECD\_D  
 ClientSampleId :  
 BHBZ8

Manual Integrations  
 APPROVED

Reviewed By :Abdul Mirza 06/10/2024  
 Supervised By :Ankita Jodhani 06/10/2024