

Data Path : Z:\pestpcbsrv\HPCHEM1\ECD_D\Data\PD060824\
 Data File : PD083518.D
 Signal(s) : Signal #1: ECD1A.ch Signal #2: ECD2B.ch
 Acq On : 07 Jun 2024 15:47
 Operator : ARVAJ
 Sample : INDB302
 Misc :
 ALS Vial : 27 Sample Multiplier: 1

Instrument :

ECD_D

Lab Sampled :

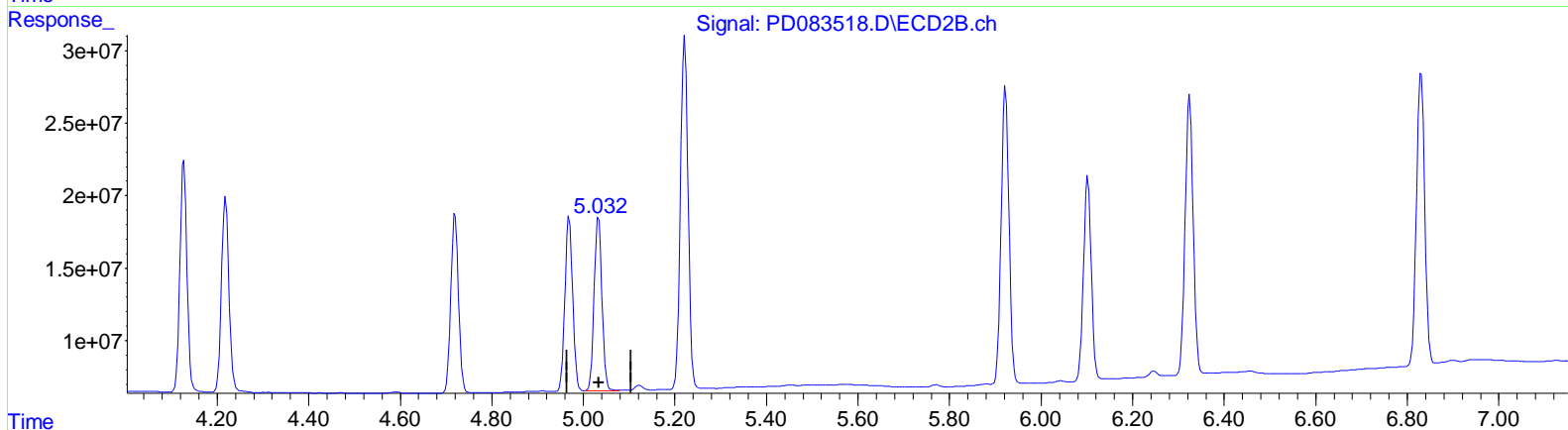
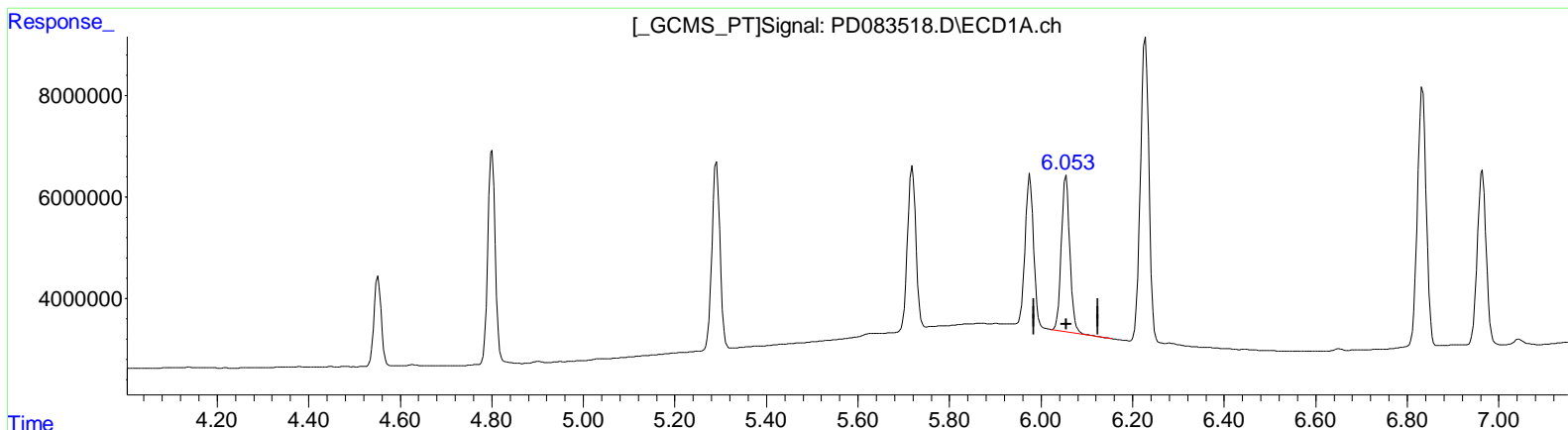
INDB302

Manual Integrations APPROVED

Reviewed By : Abdul Mirza 06/10/2024
 Supervised By : Ankita Jodhani 06/10/2024

Integration File signal 1: autoint1.e
 Integration File signal 2: autoint2.e
 Quant Time: Jun 07 21:36:24 2024
 Quant Method : Z:\pestpcbsrv\HPCHEM1\ECD_D\Method\PD060724CLP.M
 Quant Title : GC Extractables
 QLast Update : Fri Jun 07 04:03:14 2024
 Response via : Initial Calibration
 Integrator: ChemStation

Volume Inj. : 1 µl
 Signal #1 Phase : ZB-MR1 Signal #2 Phase: ZB-MR2
 Signal #1 Info : 30M x 0.32mm x 0.5 Signal #2 Info : 30M x 0.32mm x 0.25µm



(11) cis-Chlordane (B)
 6.055min 19.113 ng/ml
 response 39801241

(11) cis-Chlordane #2 (B)
 5.033min 19.382 ng/ml
 response 142699132

(+) = Expected Retention Time

Data Path : Z:\pestpcbsrv\HPCHEM1\ECD_D\Data\PD060824\
 Data File : PD083518.D
 Signal(s) : Signal #1: ECD1A.ch Signal #2: ECD2B.ch
 Acq On : 07 Jun 2024 15:47
 Operator : ARVAJ
 Sample : INDB302
 Misc :
 ALS Vial : 27 Sample Multiplier: 1

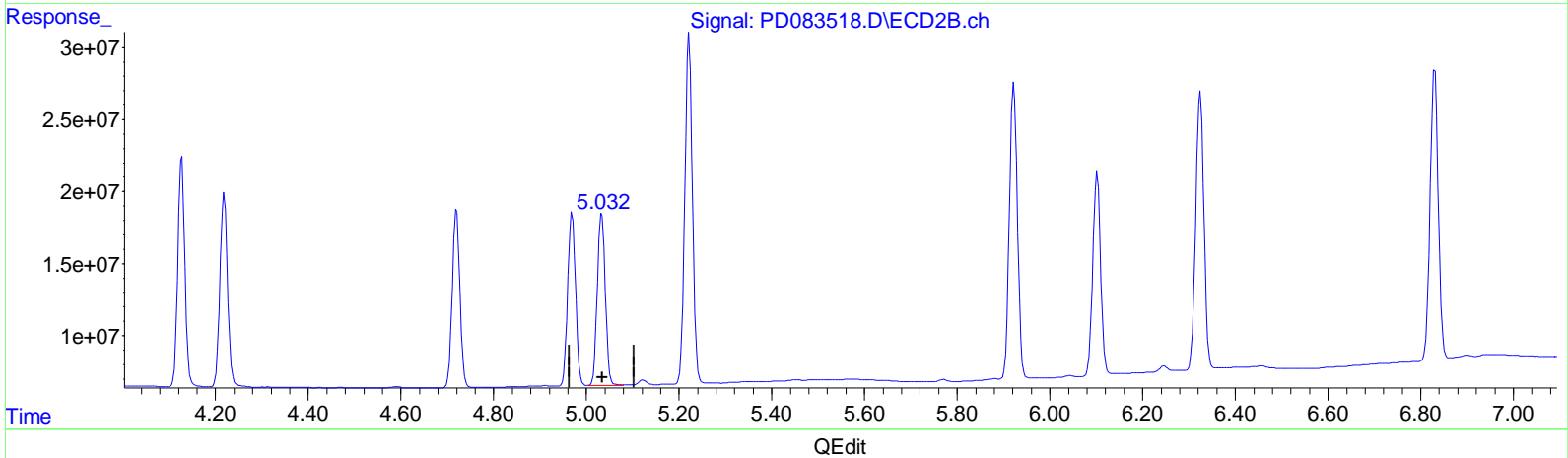
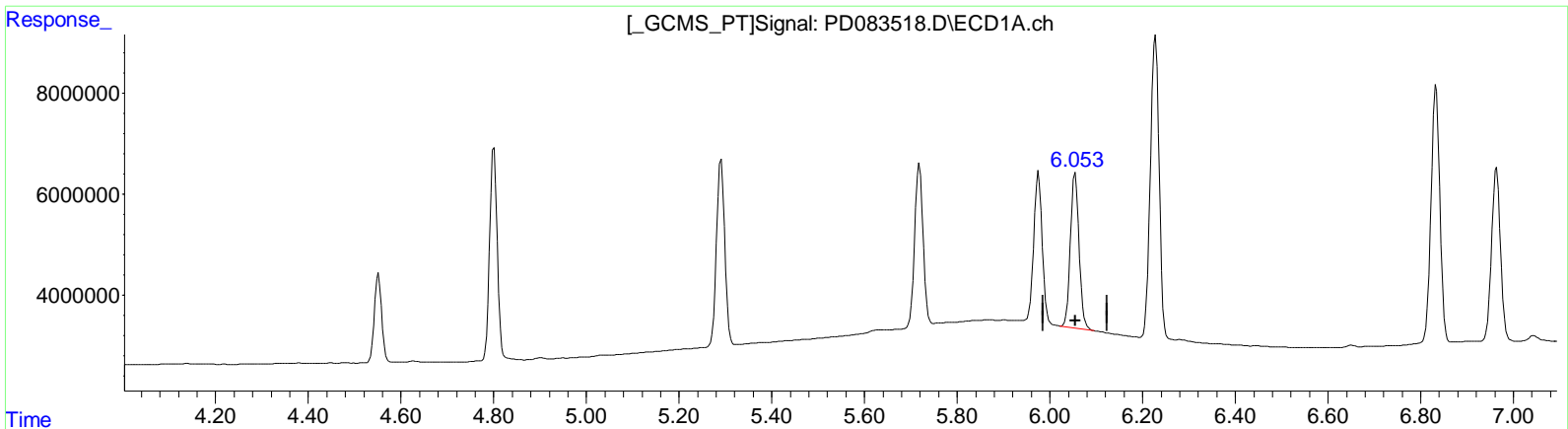
Instrument :
 ECD_D
Lab Sampled :
 INDB302

Manual Integrations APPROVED

Reviewed By : Abdul Mirza 06/10/2024
 Supervised By : Ankita Jodhani 06/10/2024

Integration File signal 1: autoint1.e
 Integration File signal 2: autoint2.e
 Quant Time: Jun 07 21:36:24 2024
 Quant Method : Z:\pestpcbsrv\HPCHEM1\ECD_D\Method\PD060724CLP.M
 Quant Title : GC Extractables
 QLast Update : Fri Jun 07 04:03:14 2024
 Response via : Initial Calibration
 Integrator: ChemStation

Volume Inj. : 1 µl
 Signal #1 Phase : ZB-MR1 Signal #2 Phase: ZB-MR2
 Signal #1 Info : 30M x 0.32mm x 0.5 Signal #2 Info : 30M x 0.32mm x 0.25µm



(11) cis-Chlordane (B)
 6.053min 19.034 ng/ml m
 response 39636007

(11) cis-Chlordane #2 (B)
 5.033min 19.382 ng/ml
 response 142699132

Data Path : Z:\pestpcbsrv\HPCHEM1\ECD_D\Data\PD060824\
 Data File : PD083518.D
 Signal(s) : Signal #1: ECD1A.ch Signal #2: ECD2B.ch
 Acq On : 07 Jun 2024 15:47
 Operator : ARVAJ
 Sample : INDB302
 Misc :
 ALS Vial : 27 Sample Multiplier: 1

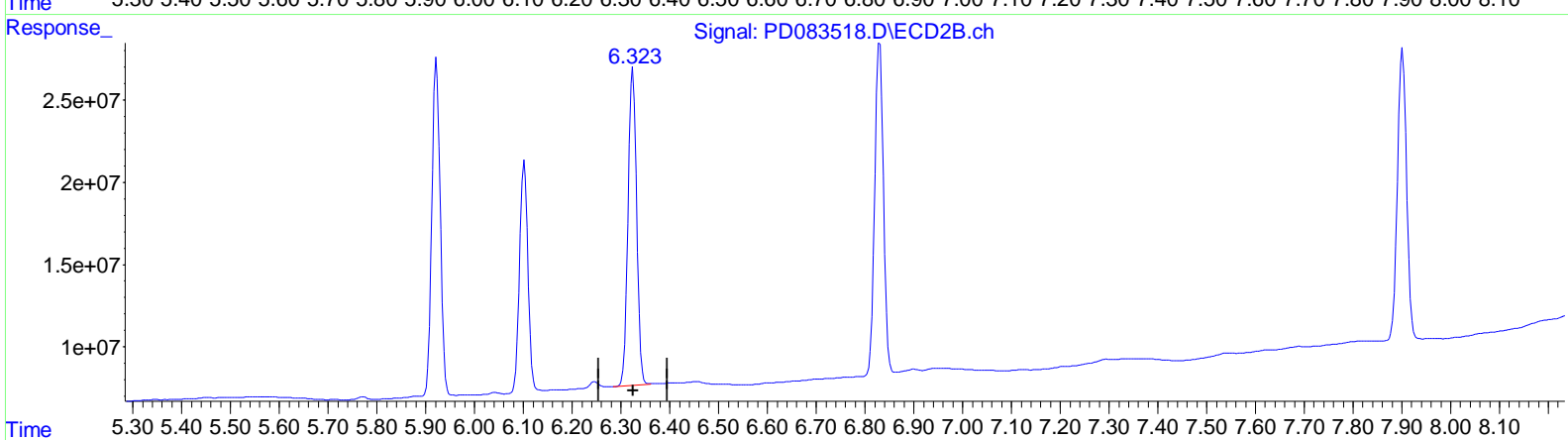
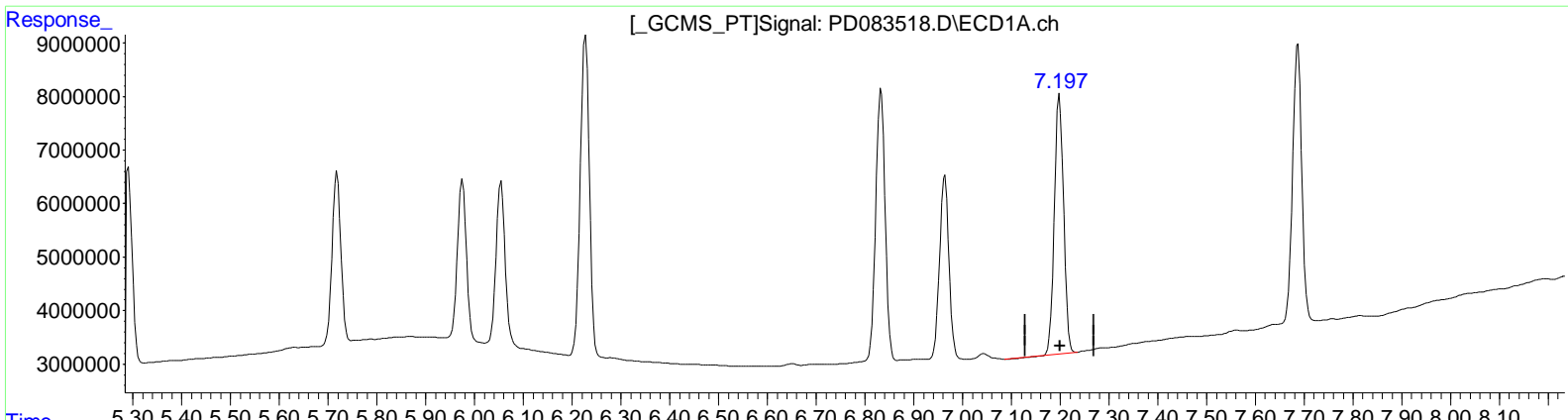
Instrument :
 ECD_D
LabSampleID :
 INDB302

Manual Integrations APPROVED

Reviewed By : Abdul Mirza 06/10/2024
 Supervised By : Ankita Jodhani 06/10/2024

Integration File signal 1: autoint1.e
 Integration File signal 2: autoint2.e
 Quant Time: Jun 07 21:36:24 2024
 Quant Method : Z:\pestpcbsrv\HPCHEM1\ECD_D\Method\PD060724CLP.M
 Quant Title : GC Extractables
 QLast Update : Fri Jun 07 04:03:14 2024
 Response via : Initial Calibration
 Integrator: ChemStation

Volume Inj. : 1 µl
 Signal #1 Phase : ZB-MR1 Signal #2 Phase: ZB-MR2
 Signal #1 Info : 30M x 0.32mm x 0.5 Signal #2 Info : 30M x 0.32mm x 0.25µm



QEdit

(19) Endosulfan Sulfate (B)
 7.199min 37.300 ng/ml
 response 63812332

(19) Endosulfan Sulfate #2 (B)
 6.325min 37.891 ng/ml
 response 234102188

Data Path : Z:\pestpcbsrv\HPCHEM1\ECD_D\Data\PD060824\
 Data File : PD083518.D
 Signal(s) : Signal #1: ECD1A.ch Signal #2: ECD2B.ch
 Acq On : 07 Jun 2024 15:47
 Operator : ARVAJ
 Sample : INDB302
 Misc :
 ALS Vial : 27 Sample Multiplier: 1

Instrument :

ECD_D

Lab Sampled :

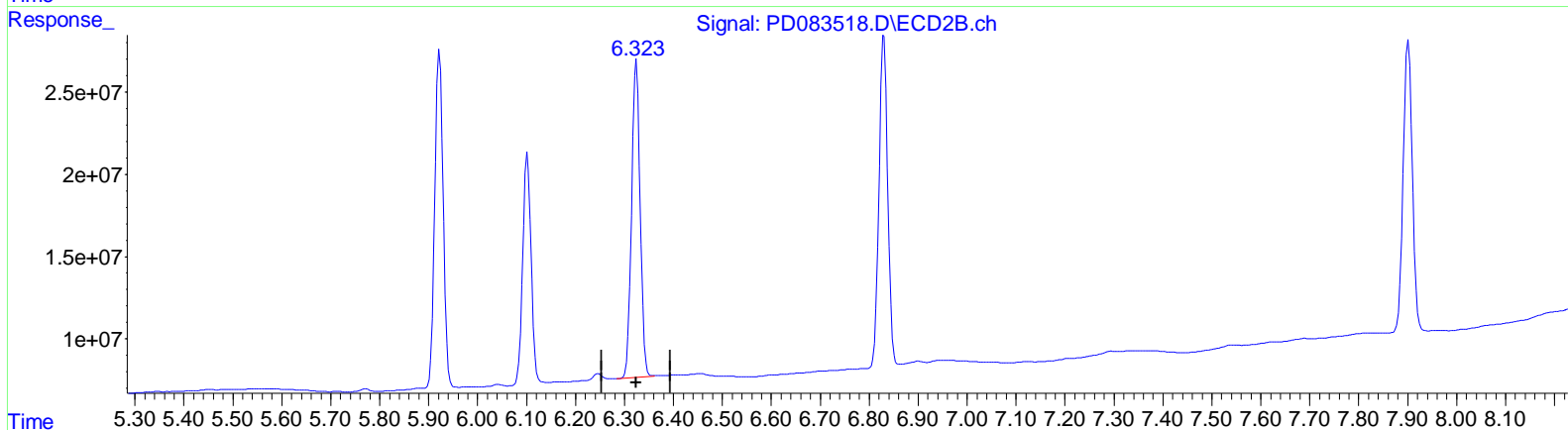
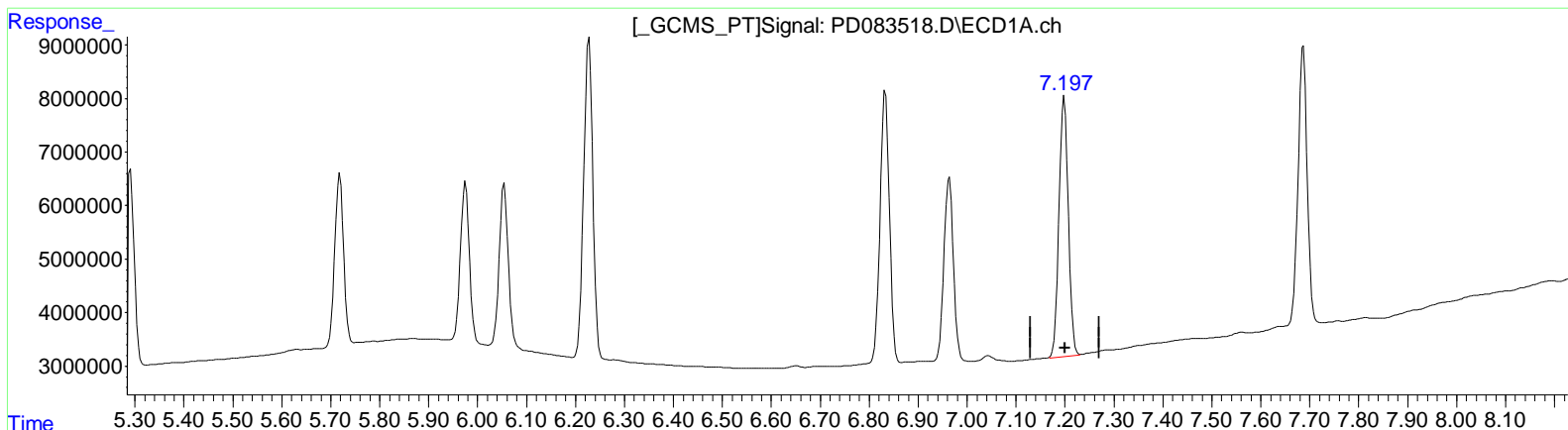
INDB302

Manual Integrations APPROVED

Reviewed By : Abdul Mirza 06/10/2024
 Supervised By : Ankita Jodhani 06/10/2024

Integration File signal 1: autoint1.e
 Integration File signal 2: autoint2.e
 Quant Time: Jun 07 21:36:24 2024
 Quant Method : Z:\pestpcbsrv\HPCHEM1\ECD_D\Method\PD060724CLP.M
 Quant Title : GC Extractables
 QLast Update : Fri Jun 07 04:03:14 2024
 Response via : Initial Calibration
 Integrator: ChemStation

Volume Inj. : 1 µl
 Signal #1 Phase : ZB-MR1 Signal #2 Phase: ZB-MR2
 Signal #1 Info : 30M x 0.32mm x 0.5 Signal #2 Info : 30M x 0.32mm x 0.25µm



QEdit

(19) Endosulfan Sulfate (B)

7.197min 37.548 ng/ml m

response 64236958

(19) Endosulfan Sulfate #2 (B)

6.325min 37.891 ng/ml

response 234102188