

Data Path : Z:\pestpcbsrv\HPCHEM1\ECD_D\Data\PD060824\
 Data File : PD083543.D
 Signal(s) : Signal #1: ECD1A.ch Signal #2: ECD2B.ch
 Acq On : 08 Jun 2024 05:07
 Operator : AR\AJ
 Sample : PEM109
 Misc :
 ALS Vial : 3 Sample Multiplier: 1

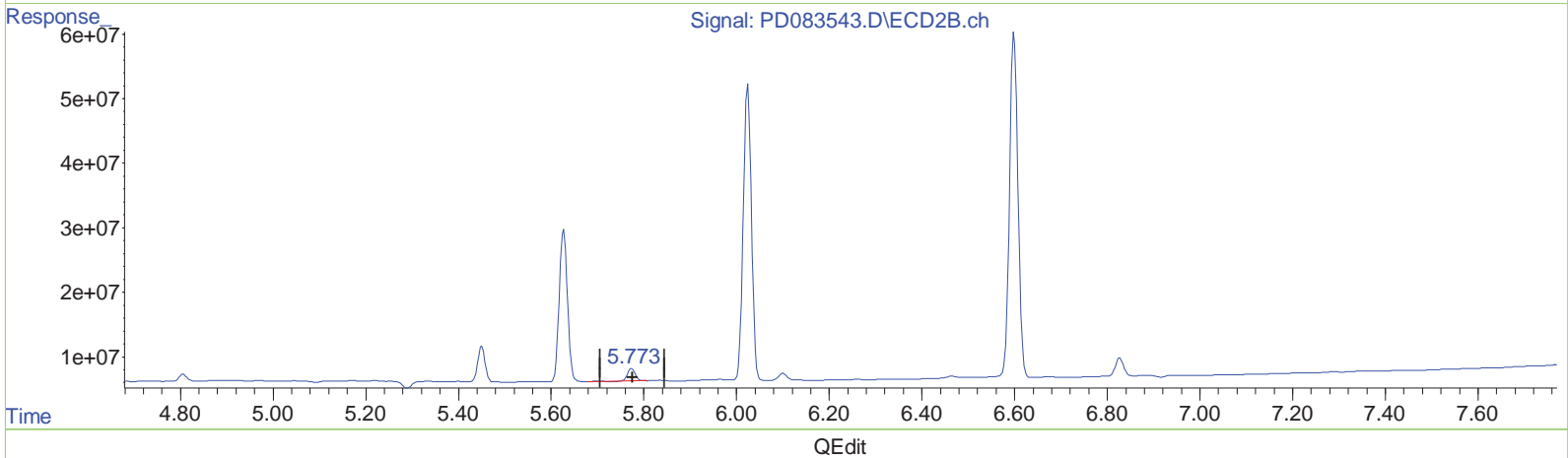
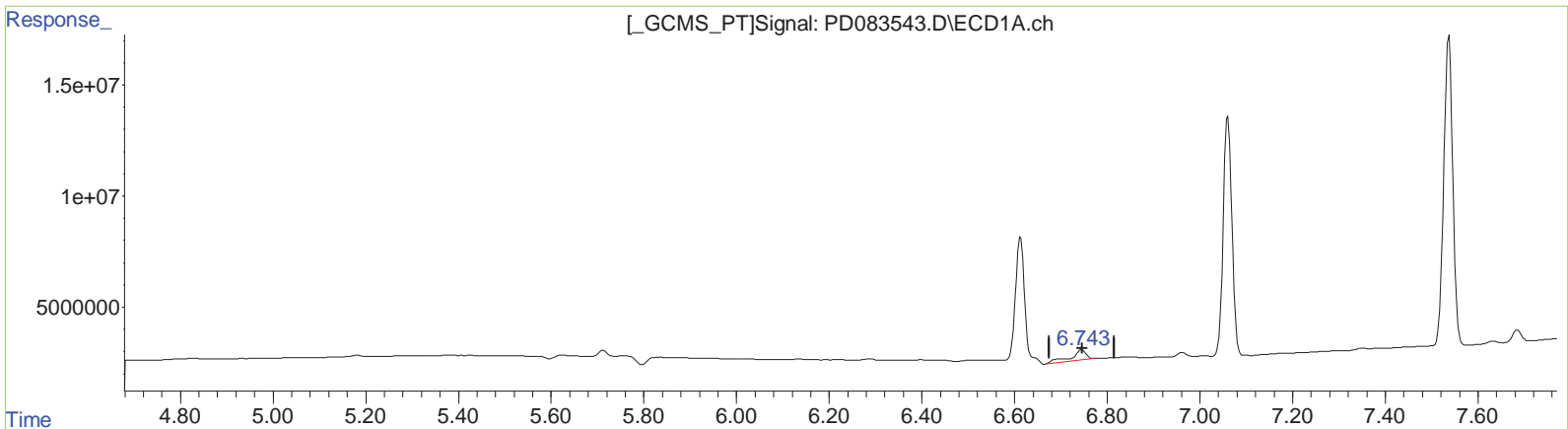
Instrument :
 ECD_D
LabSampled :
 PEM109

Manual Integrations APPROVED

Reviewed By : Abdul Mirza 06/10/2024
 Supervised By : Ankita Jodhani 06/10/2024

Integration File signal 1: autoint1.e
 Integration File signal 2: autoint2.e
 Quant Time: Jun 09 05:57:34 2024
 Quant Method : Z:\pestpcbsrv\HPCHEM1\ECD_D\Method\PD060724CLP.M
 Quant Title : GC Extractables
 QLast Update : Fri Jun 07 04:03:14 2024
 Response via : Initial Calibration
 Integrator: ChemStation

Volume Inj. : 1 µl
 Signal #1 Phase : ZB-MR1 Signal #2 Phase: ZB-MR2
 Signal #1 Info : 30M x 0.32mm x 0.5 Signal #2 Info : 30M x 0.32mm x 0.25µm



(16) 4,4'-DDD (A)
 6.745min 7.283 ng/ml
 response 10672428

(16) 4,4'-DDD #2 (A)
 5.774min 3.930 ng/ml
 response 22157090

Data Path : Z:\pestpcbsrv\HPCHEM1\ECD_D\Data\PD060824\
 Data File : PD083543.D
 Signal(s) : Signal #1: ECD1A.ch Signal #2: ECD2B.ch
 Acq On : 08 Jun 2024 05:07
 Operator : AR\AJ
 Sample : PEM109
 Misc :
 ALS Vial : 3 Sample Multiplier: 1

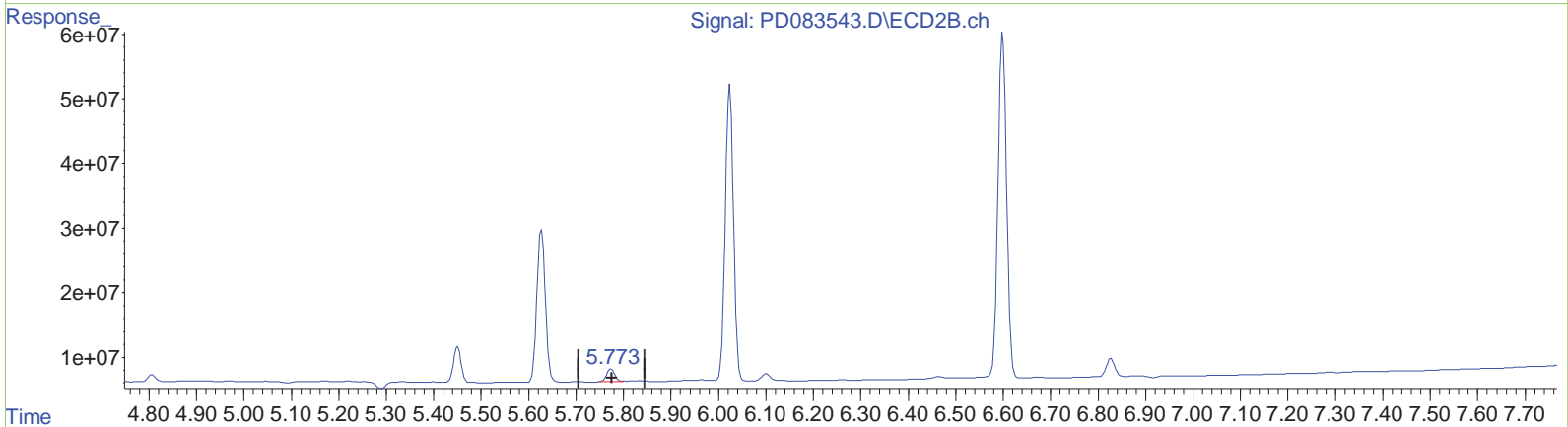
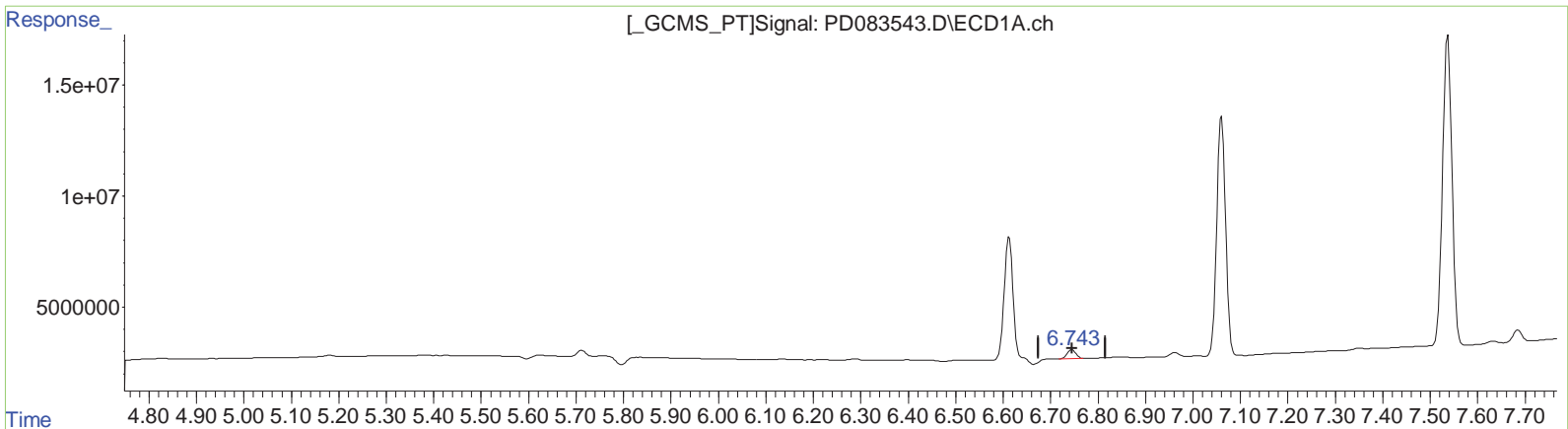
Instrument :
 ECD_D
LabSampleID :
 PEM109

Manual IntegrationsAPPROVED

Reviewed By :Abdul Mirza 06/10/2024
 Supervised By :Ankita Jodhani 06/10/2024

Integration File signal 1: autoint1.e
 Integration File signal 2: autoint2.e
 Quant Time: Jun 09 05:57:34 2024
 Quant Method : Z:\pestpcbsrv\HPCHEM1\ECD_D\Method\PD060724CLP.M
 Quant Title : GC Extractables
 QLast Update : Fri Jun 07 04:03:14 2024
 Response via : Initial Calibration
 Integrator: ChemStation

Volume Inj. : 1 µl
 Signal #1 Phase : ZB-MR1 Signal #2 Phase: ZB-MR2
 Signal #1 Info : 30M x 0.32mm x0.5 Signal #2 Info : 30M x 0.32mm x 0.25µm



QEdit

(16) 4,4'-DDD (A)
 6.743min 3.414 ng/ml m
 response 5002122

(16) 4,4'-DDD #2 (A)
 5.773min 4.150 ng/ml m
 response 23396249

Data Path : Z:\pestpcbsrv\HPCHEM1\ECD_D\Data\PD060824\
 Data File : PD083543.D
 Signal(s) : Signal #1: ECD1A.ch Signal #2: ECD2B.ch
 Acq On : 08 Jun 2024 05:07
 Operator : AR\AJ
 Sample : PEM109
 Misc :
 ALS Vial : 3 Sample Multiplier: 1

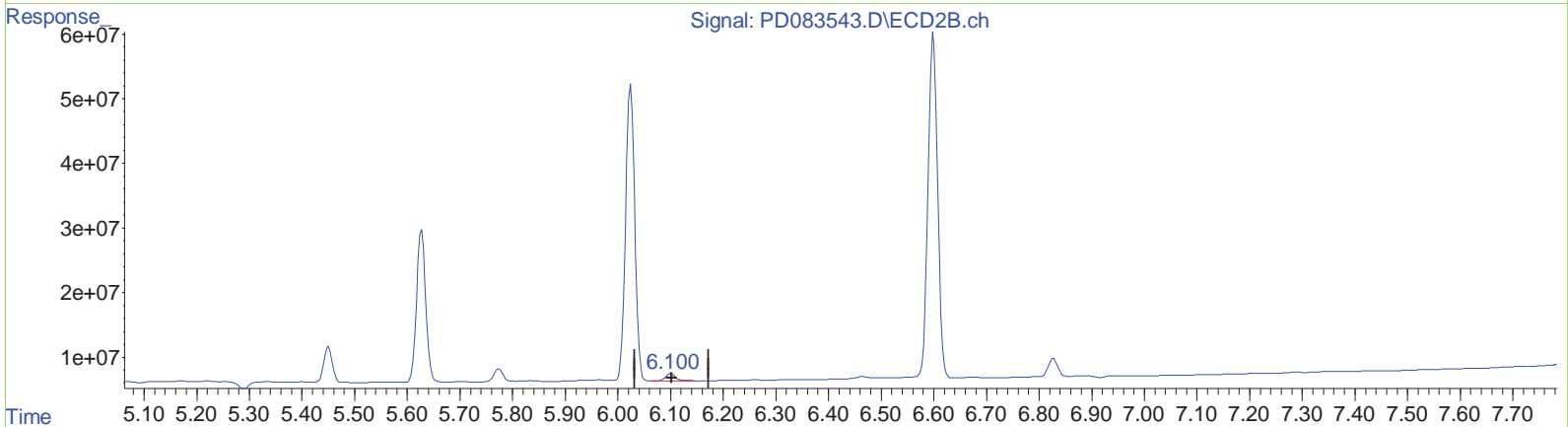
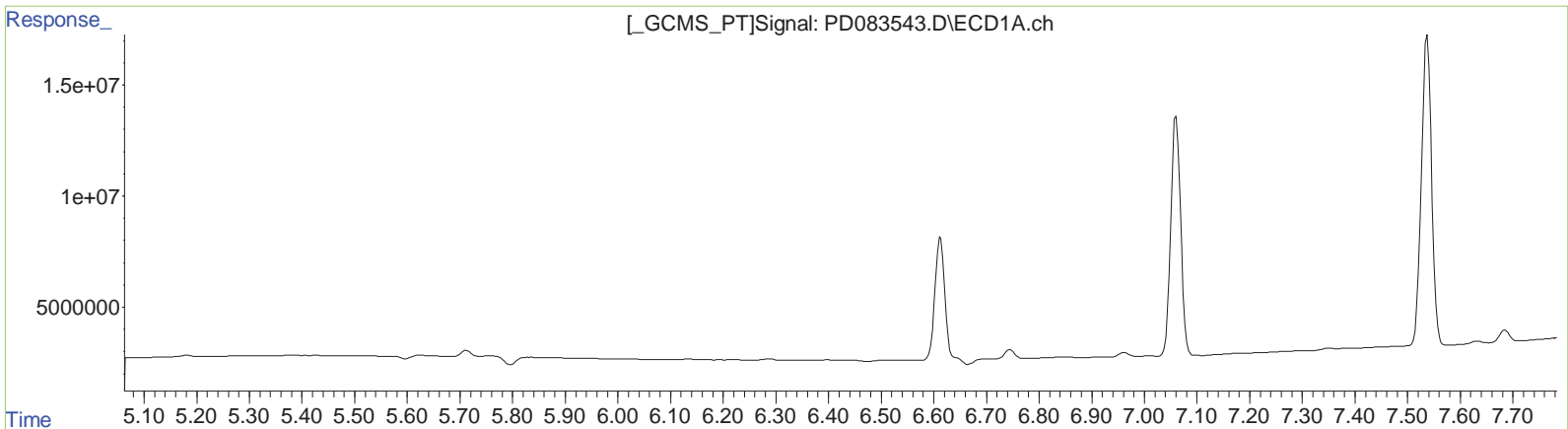
Instrument :
 ECD_D
LabSampleId :
 PEM109

Manual IntegrationsAPPROVED

Reviewed By :Abdul Mirza 06/10/2024
 Supervised By :Ankita Jodhani 06/10/2024

Integration File signal 1: autoint1.e
 Integration File signal 2: autoint2.e
 Quant Time: Jun 09 05:57:34 2024
 Quant Method : Z:\pestpcbsrv\HPCHEM1\ECD_D\Method\PD060724CLP.M
 Quant Title : GC Extractables
 QLast Update : Fri Jun 07 04:03:14 2024
 Response via : Initial Calibration
 Integrator: ChemStation

Volume Inj. : 1 µl
 Signal #1 Phase : ZB-MR1 Signal #2 Phase: ZB-MR2
 Signal #1 Info : 30M x 0.32mm x 0.5 Signal #2 Info : 30M x 0.32mm x 0.25µm



Retention Time (min)	Concentration (ng/ml)	Response
(18) Endrin aldehyde (B)	0.000	0
(18) Endrin aldehyde #2 (B)	2.956	14159030

Data Path : Z:\pestpcbsrv\HPCHEM1\ECD_D\Data\PD060824\
 Data File : PD083543.D
 Signal(s) : Signal #1: ECD1A.ch Signal #2: ECD2B.ch
 Acq On : 08 Jun 2024 05:07
 Operator : AR\AJ
 Sample : PEM109
 Misc :
 ALS Vial : 3 Sample Multiplier: 1

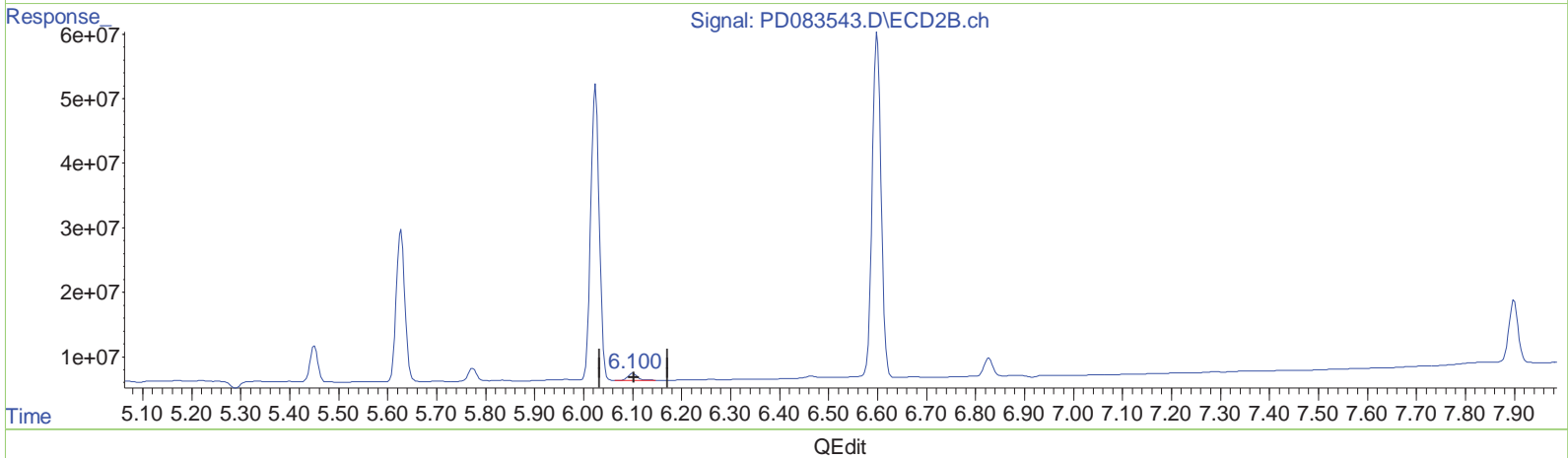
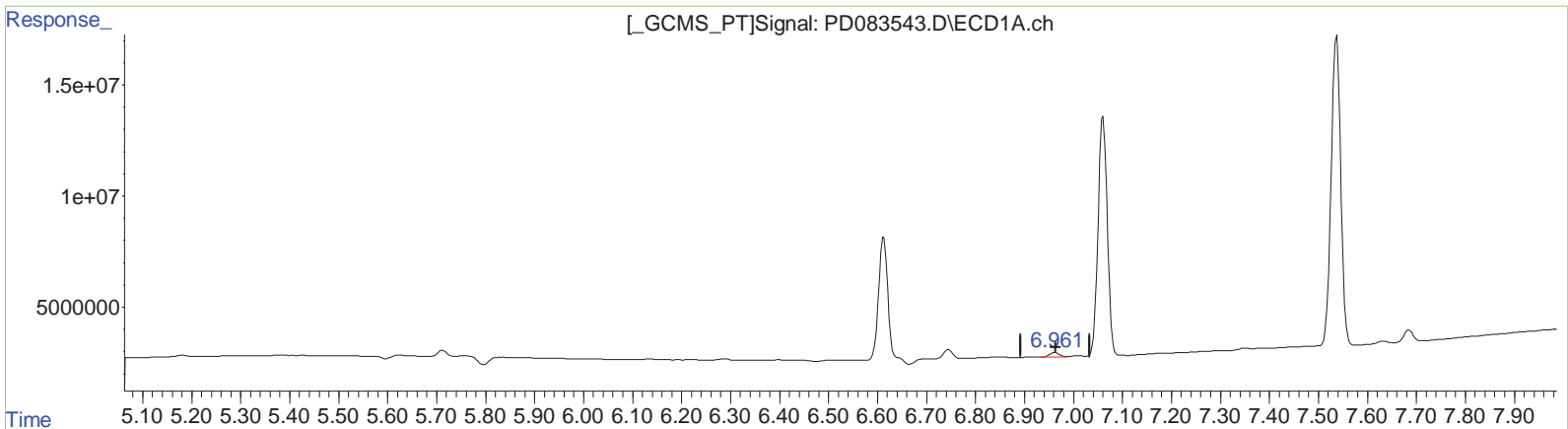
Instrument :
 ECD_D
LabSampleID :
 PEM109

Manual IntegrationsAPPROVED

Reviewed By :Abdul Mirza 06/10/2024
 Supervised By :Ankita Jodhani 06/10/2024

Integration File signal 1: autoint1.e
 Integration File signal 2: autoint2.e
 Quant Time: Jun 09 05:57:34 2024
 Quant Method : Z:\pestpcbsrv\HPCHEM1\ECD_D\Method\PD060724CLP.M
 Quant Title : GC Extractables
 QLast Update : Fri Jun 07 04:03:14 2024
 Response via : Initial Calibration
 Integrator: ChemStation

Volume Inj. : 1 µl
 Signal #1 Phase : ZB-MR1 Signal #2 Phase: ZB-MR2
 Signal #1 Info : 30M x 0.32mm x0.5 Signal #2 Info : 30M x 0.32mm x 0.25µm



(18) Endrin aldehyde (B)
 6.961min 2.101 ng/ml m
 response 2803129

(18) Endrin aldehyde #2 (B)
 6.101min 2.956 ng/ml
 response 14159030

Data Path : Z:\pestpcbsrv\HPCHEM1\ECD_D\Data\PD060824\
 Data File : PD083543.D
 Signal(s) : Signal #1: ECD1A.ch Signal #2: ECD2B.ch
 Acq On : 08 Jun 2024 05:07
 Operator : AR\AJ
 Sample : PEM109
 Misc :
 ALS Vial : 3 Sample Multiplier: 1

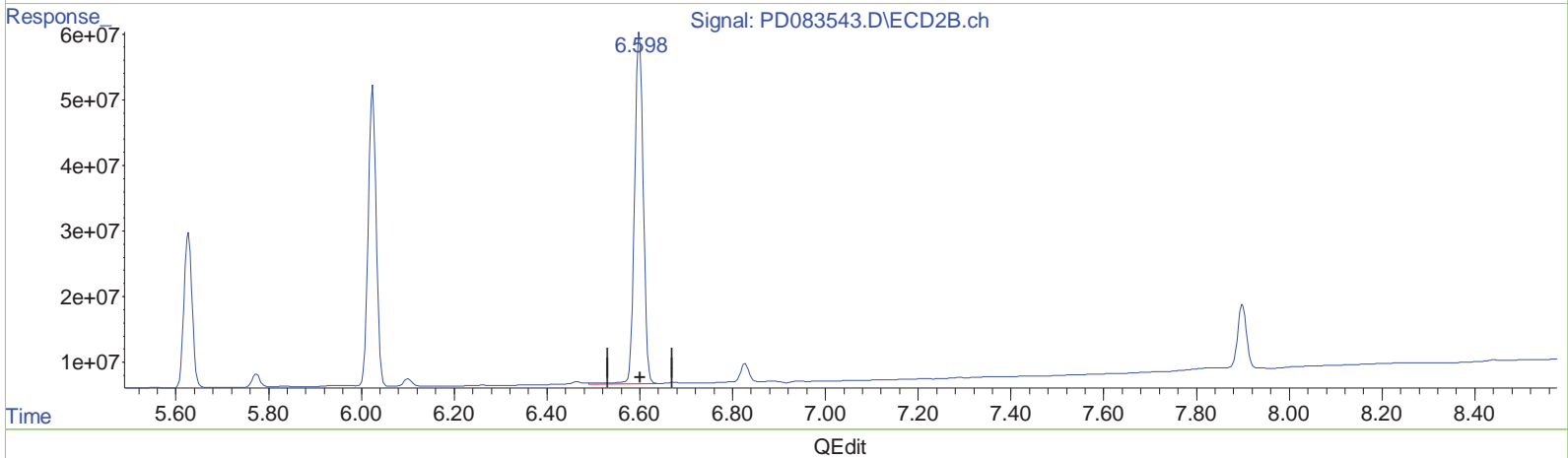
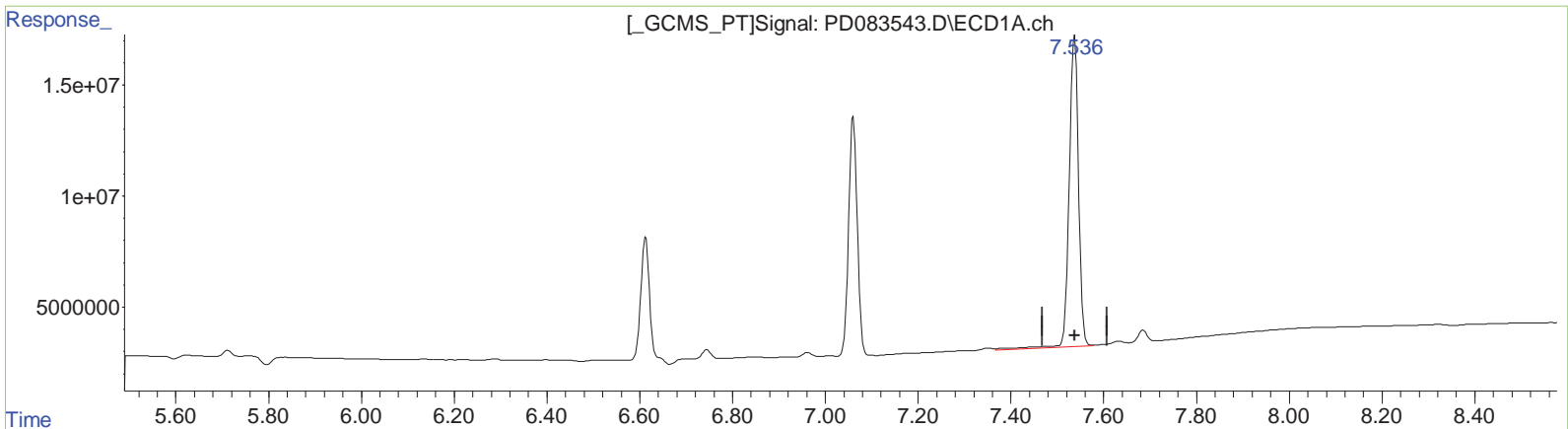
Instrument :
 ECD_D
LabSampleID :
 PEM109

Manual Integrations APPROVED

Reviewed By : Abdul Mirza 06/10/2024
 Supervised By : Ankita Jodhani 06/10/2024

Integration File signal 1: autoint1.e
 Integration File signal 2: autoint2.e
 Quant Time: Jun 09 05:57:34 2024
 Quant Method : Z:\pestpcbsrv\HPCHEM1\ECD_D\Method\PD060724CLP.M
 Quant Title : GC Extractables
 QLast Update : Fri Jun 07 04:03:14 2024
 Response via : Initial Calibration
 Integrator: ChemStation

Volume Inj. : 1 µl
 Signal #1 Phase : ZB-MR1 Signal #2 Phase: ZB-MR2
 Signal #1 Info : 30M x 0.32mm x 0.5 Signal #2 Info : 30M x 0.32mm x 0.25µm



(20) Methoxychlor (A)
 7.537min 226.306 ng/ml
 response 195793301

(20) Methoxychlor #2 (A)
 6.599min 237.328 ng/ml
 response 689771436

Data Path : Z:\pestpcbsrv\HPCHEM1\ECD_D\Data\PD060824\
 Data File : PD083543.D
 Signal(s) : Signal #1: ECD1A.ch Signal #2: ECD2B.ch
 Acq On : 08 Jun 2024 05:07
 Operator : AR\AJ
 Sample : PEM109
 Misc :
 ALS Vial : 3 Sample Multiplier: 1

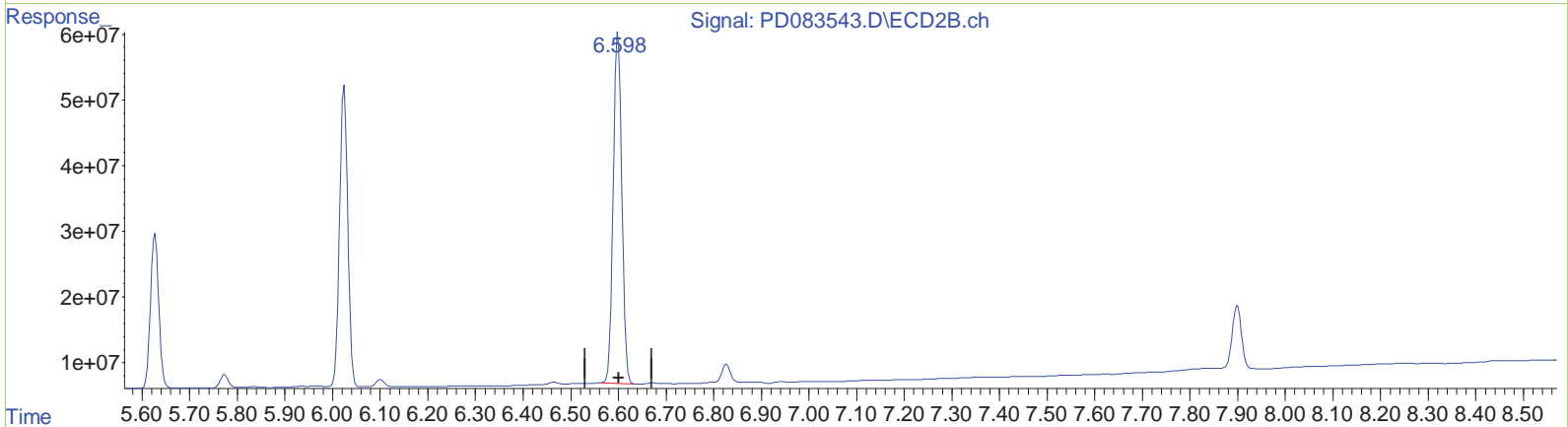
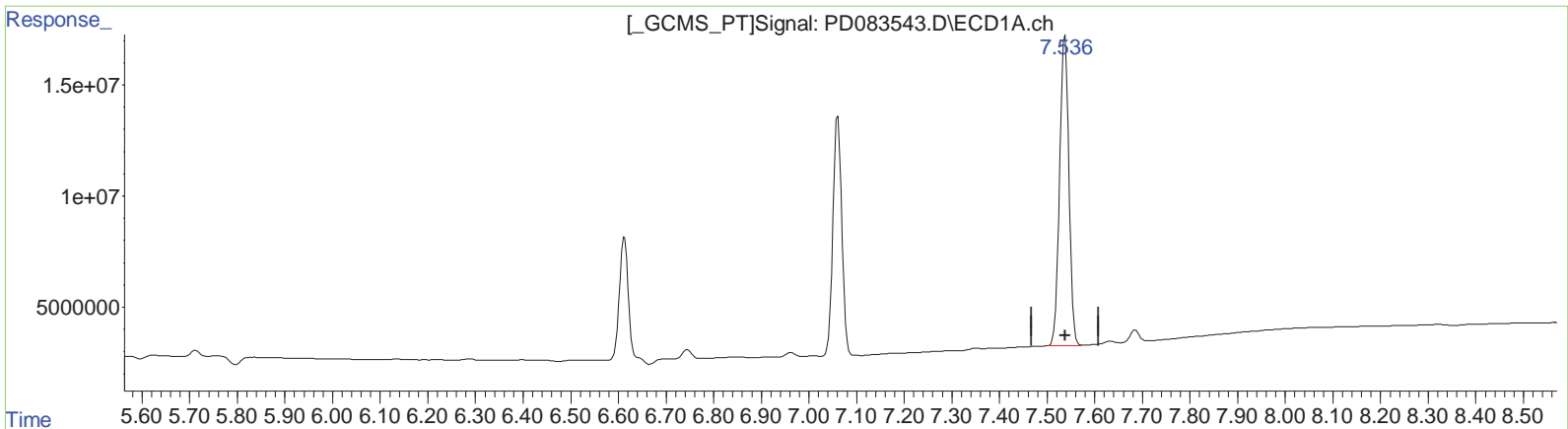
Instrument :
 ECD_D
Lab SampleID :
 PEM109

Manual Integrations APPROVED

Reviewed By : Abdul Mirza 06/10/2024
 Supervised By : Ankita Jodhani 06/10/2024

Integration File signal 1: autoint1.e
 Integration File signal 2: autoint2.e
 Quant Time: Jun 09 05:57:34 2024
 Quant Method : Z:\pestpcbsrv\HPCHEM1\ECD_D\Method\PD060724CLP.M
 Quant Title : GC Extractables
 QLast Update : Fri Jun 07 04:03:14 2024
 Response via : Initial Calibration
 Integrator: ChemStation

Volume Inj. : 1 µl
 Signal #1 Phase : ZB-MR1 Signal #2 Phase: ZB-MR2
 Signal #1 Info : 30M x 0.32mm x 0.5 Signal #2 Info : 30M x 0.32mm x 0.25µm



QEdit

(20) Methoxychlor (A)
 7.536min 219.922 ng/ml m
 response 190270345

(20) Methoxychlor #2 (A)
 6.598min 232.596 ng/ml m
 response 676020450

Data Path : Z:\pestpcbsrv\HPCHEM1\ECD_D\Data\PD060824\
 Data File : PD083543.D
 Signal(s) : Signal #1: ECD1A.ch Signal #2: ECD2B.ch
 Acq On : 08 Jun 2024 05:07
 Operator : AR\AJ
 Sample : PEM109
 Misc :
 ALS Vial : 3 Sample Multiplier: 1

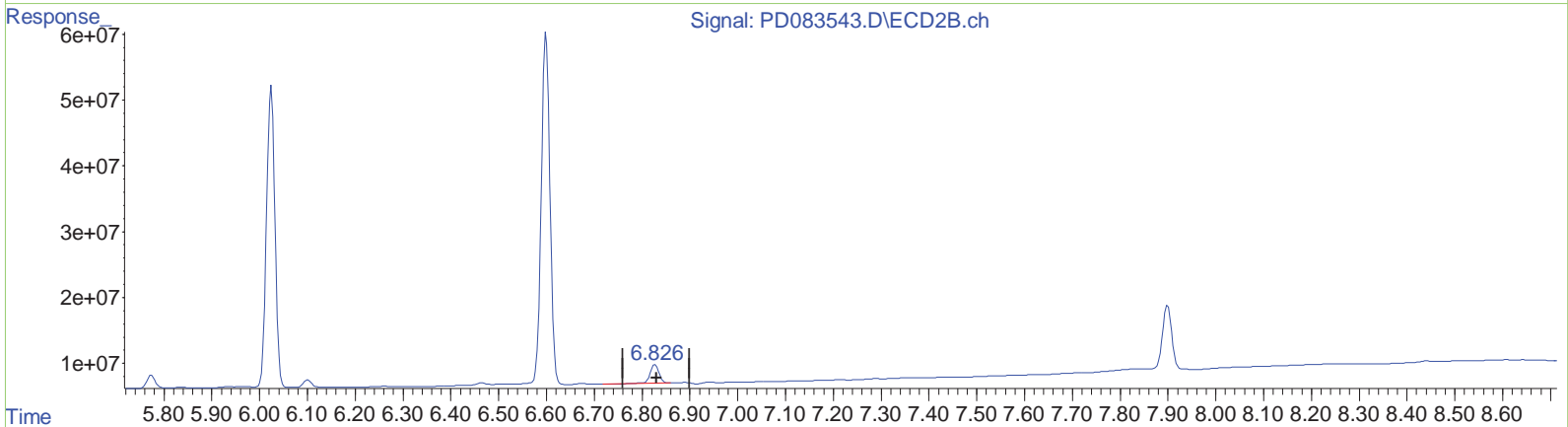
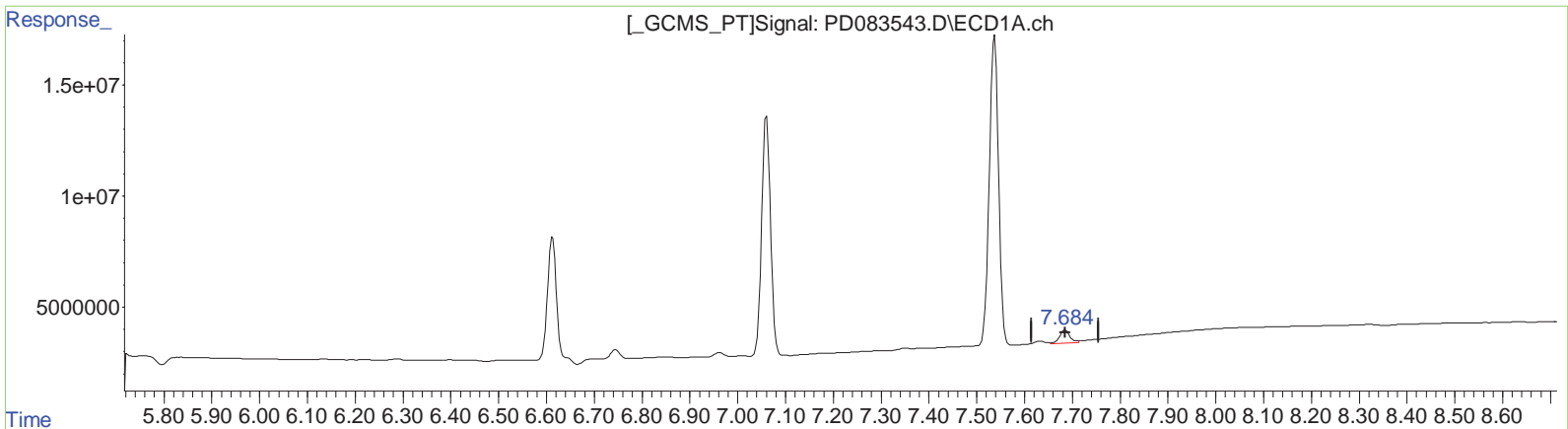
Instrument :
 ECD_D
LabSampleID :
 PEM109

Manual Integrations APPROVED

Reviewed By : Abdul Mirza 06/10/2024
 Supervised By : Ankita Jodhani 06/10/2024

Integration File signal 1: autoint1.e
 Integration File signal 2: autoint2.e
 Quant Time: Jun 09 05:57:34 2024
 Quant Method : Z:\pestpcbsrv\HPCHEM1\ECD_D\Method\PD060724CLP.M
 Quant Title : GC Extractables
 QLast Update : Fri Jun 07 04:03:14 2024
 Response via : Initial Calibration
 Integrator: ChemStation

Volume Inj. : 1 µl
 Signal #1 Phase : ZB-MR1 Signal #2 Phase: ZB-MR2
 Signal #1 Info : 30M x 0.32mm x 0.5 Signal #2 Info : 30M x 0.32mm x 0.25µm



QEdit

(21) Endrin ketone (B)
 7.685min 4.854 ng/ml
 response 9048730

(21) Endrin ketone #2 (B)
 6.827min 5.235 ng/ml
 response 35195952

Data Path : Z:\pestpcbsrv\HPCHEM1\ECD_D\Data\PD060824\
 Data File : PD083543.D
 Signal(s) : Signal #1: ECD1A.ch Signal #2: ECD2B.ch
 Acq On : 08 Jun 2024 05:07
 Operator : AR\AJ
 Sample : PEM109
 Misc :
 ALS Vial : 3 Sample Multiplier: 1

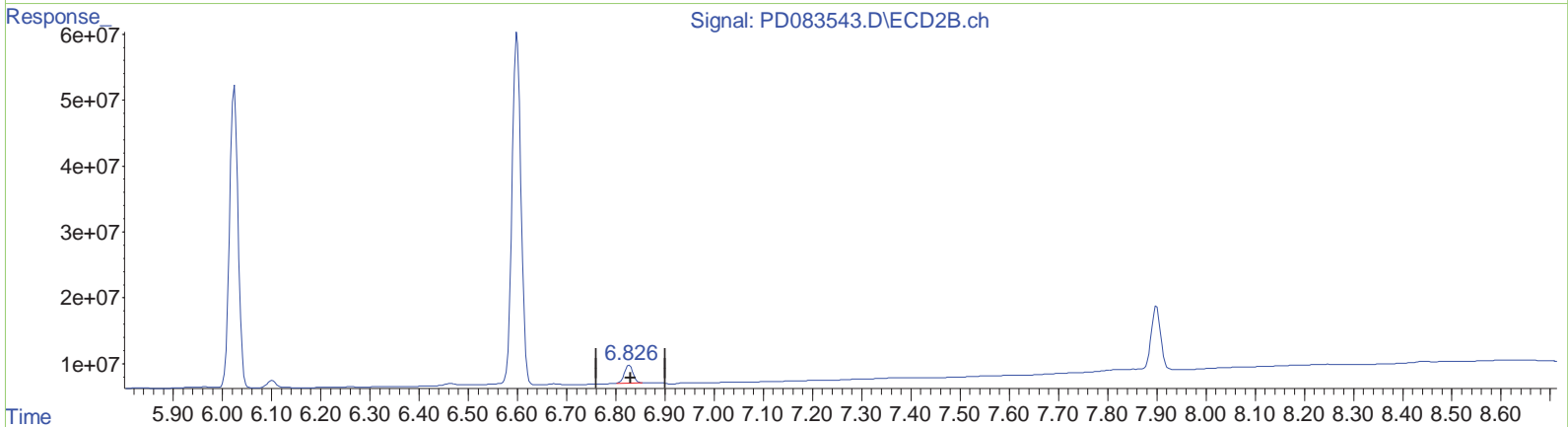
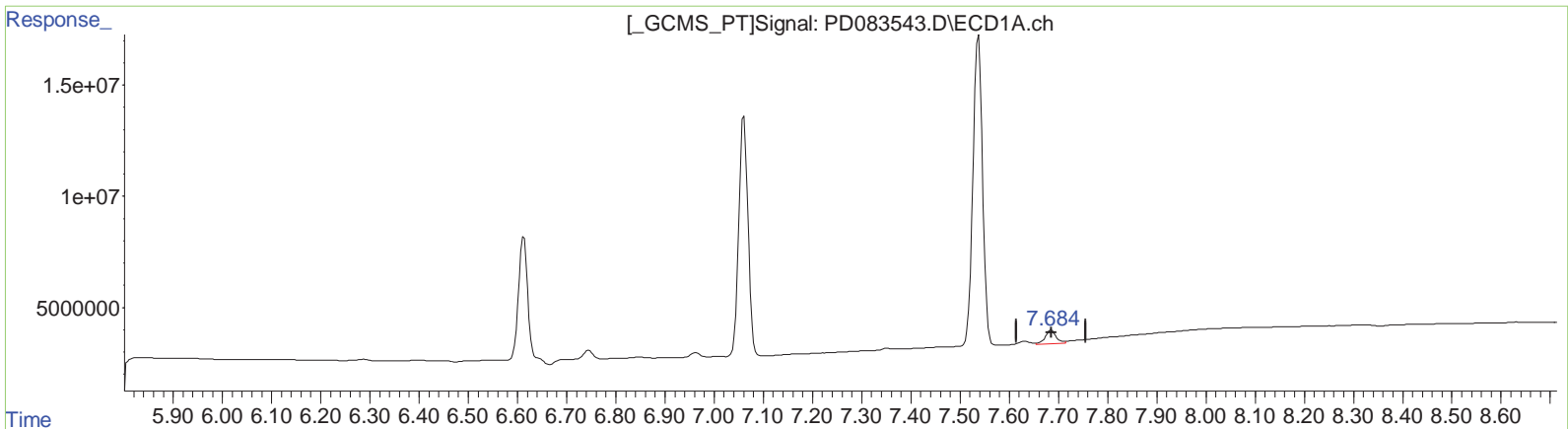
Instrument :
 ECD_D
LabSampleID :
 PEM109

Manual Integrations APPROVED

Reviewed By : Abdul Mirza 06/10/2024
 Supervised By : Ankita Jodhani 06/10/2024

Integration File signal 1: autoint1.e
 Integration File signal 2: autoint2.e
 Quant Time: Jun 09 05:57:34 2024
 Quant Method : Z:\pestpcbsrv\HPCHEM1\ECD_D\Method\PD060724CLP.M
 Quant Title : GC Extractables
 QLast Update : Fri Jun 07 04:03:14 2024
 Response via : Initial Calibration
 Integrator: ChemStation

Volume Inj. : 1 µl
 Signal #1 Phase : ZB-MR1 Signal #2 Phase: ZB-MR2
 Signal #1 Info : 30M x 0.32mm x 0.5 Signal #2 Info : 30M x 0.32mm x 0.25µm



QEdit

(21) Endrin ketone (B)
 7.685min 4.854 ng/ml
 response 9048730

(21) Endrin ketone #2 (B)
 6.826min 4.980 ng/ml m
 response 33475439

Data Path : Z:\pestpcbsrv\HPCHEM1\ECD_D\Data\PD060824\
 Data File : PD083543.D
 Signal(s) : Signal #1: ECD1A.ch Signal #2: ECD2B.ch
 Acq On : 08 Jun 2024 05:07
 Operator : AR\AJ
 Sample : PEM109
 Misc :
 ALS Vial : 3 Sample Multiplier: 1

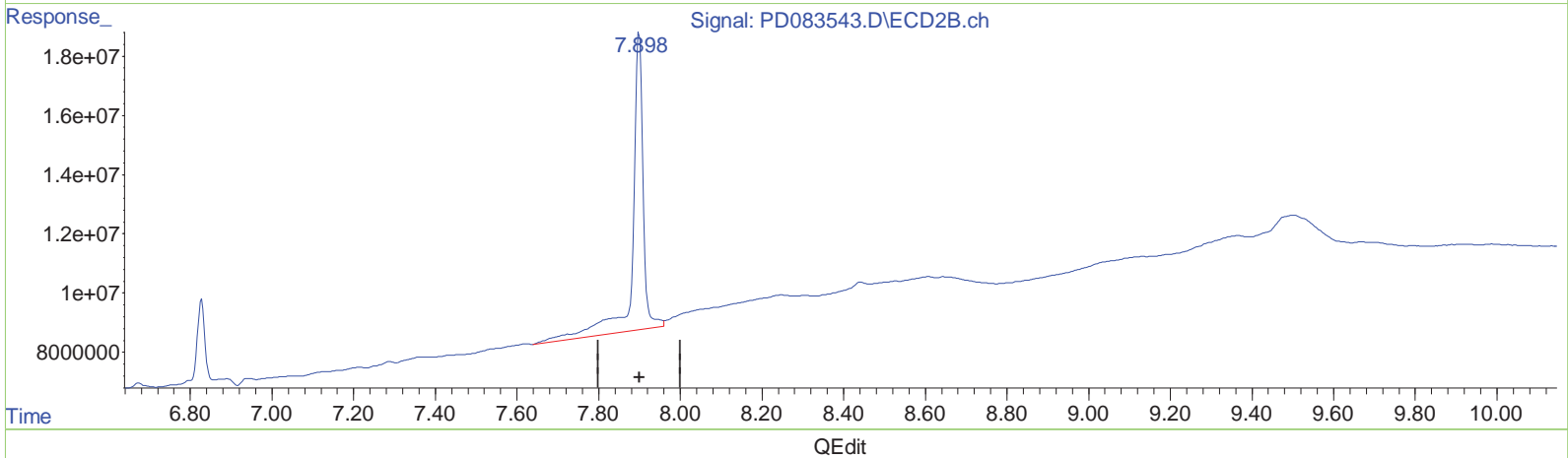
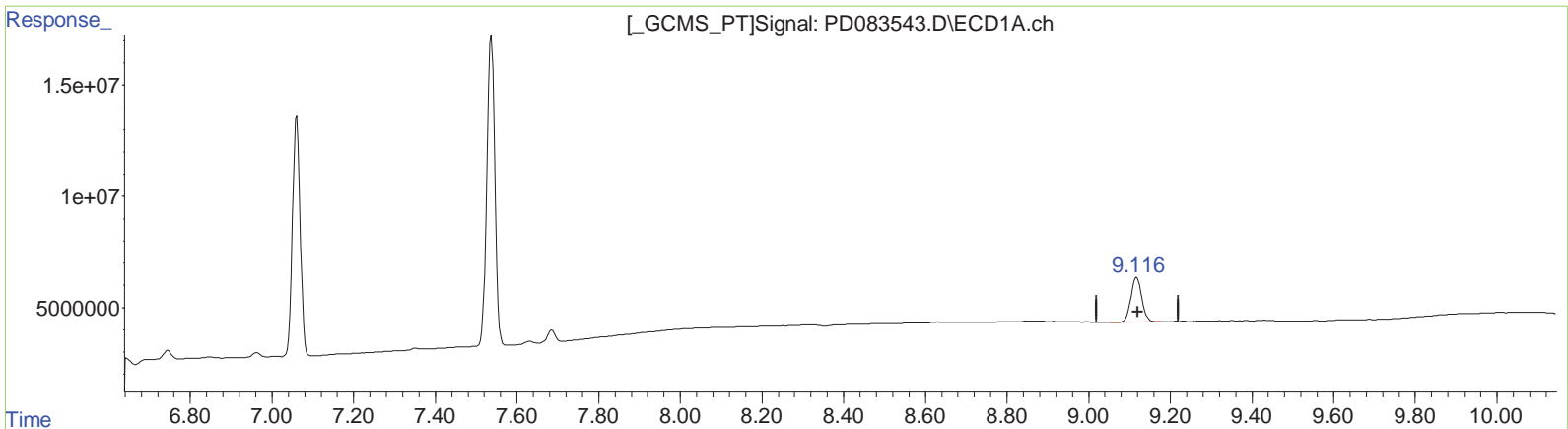
Instrument :
 ECD_D
LabSampleID :
 PEM109

Manual Integrations APPROVED

Reviewed By : Abdul Mirza 06/10/2024
 Supervised By : Ankita Jodhani 06/10/2024

Integration File signal 1: autoint1.e
 Integration File signal 2: autoint2.e
 Quant Time: Jun 09 05:57:34 2024
 Quant Method : Z:\pestpcbsrv\HPCHEM1\ECD_D\Method\PD060724CLP.M
 Quant Title : GC Extractables
 QLast Update : Fri Jun 07 04:03:14 2024
 Response via : Initial Calibration
 Integrator: ChemStation

Volume Inj. : 1 µl
 Signal #1 Phase : ZB-MR1 Signal #2 Phase: ZB-MR2
 Signal #1 Info : 30M x 0.32mm x 0.5 Signal #2 Info : 30M x 0.32mm x 0.25µm



(27) Decachlorobiphenyl (SA)
 9.118min 18.915 ng/ml
 response 36781201

(27) Decachlorobiphenyl #2 (SA)
 7.899min 30.127 ng/ml
 response 182937952

Data Path : Z:\pestpcbsrv\HPCHEM1\ECD_D\Data\PD060824\
 Data File : PD083543.D
 Signal(s) : Signal #1: ECD1A.ch Signal #2: ECD2B.ch
 Acq On : 08 Jun 2024 05:07
 Operator : AR\AJ
 Sample : PEM109
 Misc :
 ALS Vial : 3 Sample Multiplier: 1

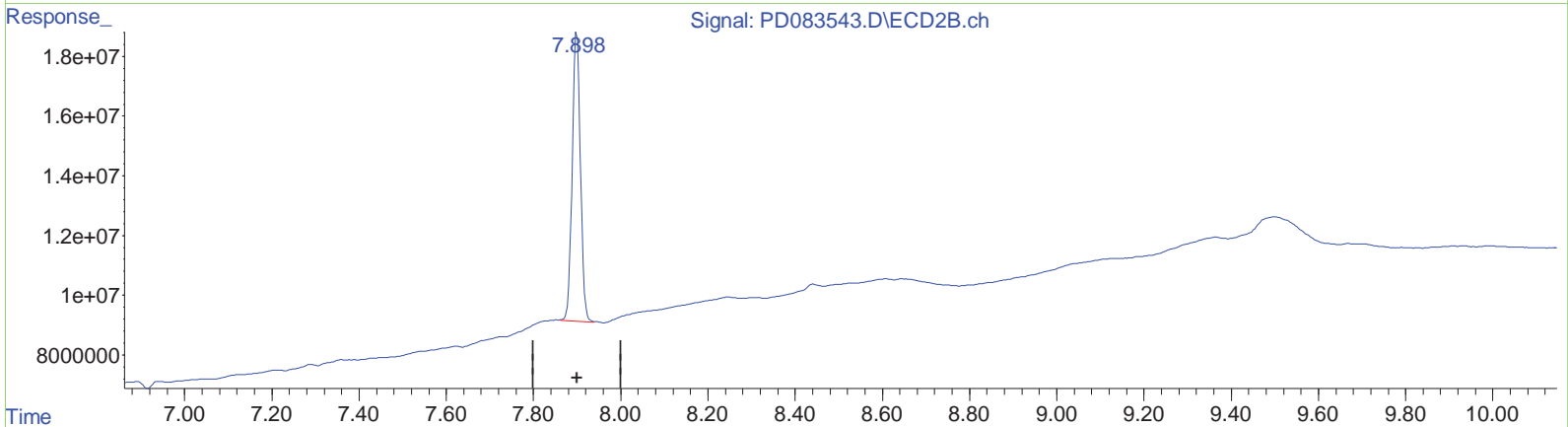
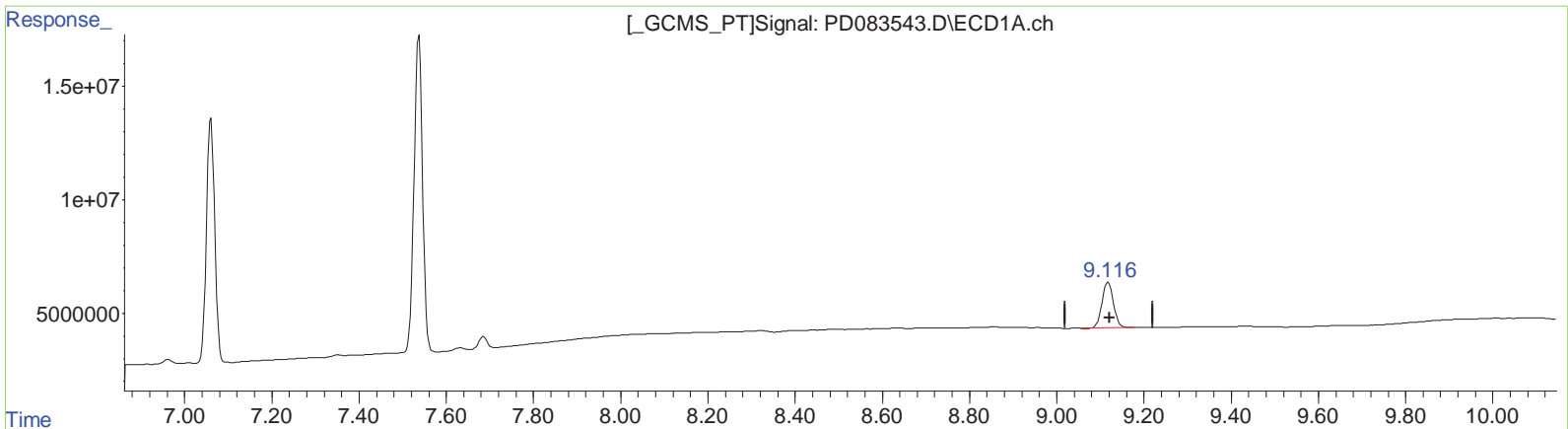
Instrument :
 ECD_D
LabSampleID :
 PEM109

Manual IntegrationsAPPROVED

Reviewed By :Abdul Mirza 06/10/2024
 Supervised By :Ankita Jodhani 06/10/2024

Integration File signal 1: autoint1.e
 Integration File signal 2: autoint2.e
 Quant Time: Jun 09 05:57:34 2024
 Quant Method : Z:\pestpcbsrv\HPCHEM1\ECD_D\Method\PD060724CLP.M
 Quant Title : GC Extractables
 QLast Update : Fri Jun 07 04:03:14 2024
 Response via : Initial Calibration
 Integrator: ChemStation

Volume Inj. : 1 µl
 Signal #1 Phase : ZB-MR1 Signal #2 Phase: ZB-MR2
 Signal #1 Info : 30M x 0.32mm x0.5 Signal #2 Info : 30M x 0.32mm x 0.25µm



QEdit

(27) Decachlorobiphenyl (SA)
 9.118min 18.915 ng/ml
 response 36781201

(27) Decachlorobiphenyl #2 (SA)
 7.898min 21.034 ng/ml m
 response 127720749