

Data Path : Z:\pestpcbsrv\HPCHEM1\ECD_D\Data\PD060920\
 Data File : PD058336.D
 Signal(s) : Signal #1: ECD1A.ch Signal #2: ECD2B.ch
 Acq On : 09 Jun 2020 10:59
 Operator : AJ\MA
 Sample : L2906-05
 Misc :
 ALS Vial : 9 Sample Multiplier: 1

Instrument :
 ECD_D
 ClientSampleID :

Integration File signal 1: autoint1.e
 Integration File signal 2: autoint2.e
 Quant Time: Jun 10 04:53:17 2020
 Quant Method : Z:\pestpcbsrv\HPCHEM1\ECD_D\Method\PD060320CLP.M
 Quant Title : GC Extractables
 QLast Update : Wed Jun 03 05:57:37 2020
 Response via : Initial Calibration
 Integrator: ChemStation

Volume Inj. : 1 µl
 Signal #1 Phase : ZB-MR2 Signal #2 Phase: ZB-MR1
 Signal #1 Info : 30M x 0.32mm x0.2 Signal #2 Info : 30M x 0.32mm x 0.50µm

Compound	RT#1	RT#2	Resp#1	Resp#2	ng/ml	ng/ml

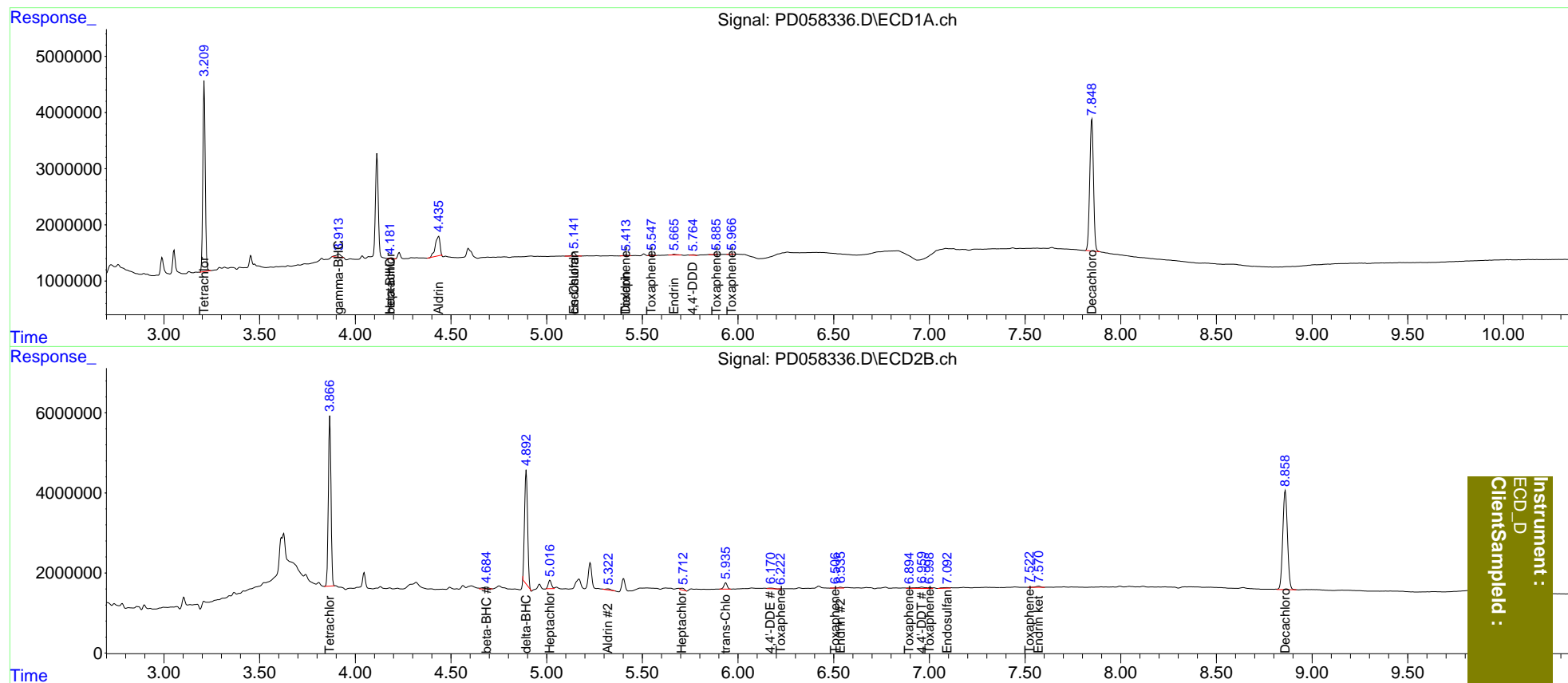
System Monitoring Compounds						
1) SA Tetrachlo...	3.211	3.867	29421885	40731664	19.534	19.301
27) SA Decachlor...	7.849	8.860	31894482	42117422	19.499	19.855
Target Compounds						
2) A alpha-BHC	3.622	0.000	32607	0	<MDL	N.D. #
3) MA gamma-BHC...	3.914	4.530	1016441	104475	0.465	<MDL #
4) MA Heptachlor	4.181	5.018	146783	2439169	0.105	0.913 #
5) MB Aldrin	4.436	5.321	5909810	465779	2.988	0.173 #
6) B beta-BHC	4.181f	4.686	146783	1034985	0.157	0.849 #
7) B delta-BHC	4.354	4.894	37101	31526054	<MDL	11.514 #
8) B Heptachlo...	4.853	5.708	49952	681086	<MDL	0.267 #
9) A Endosulfan I	5.143f	6.072	801341	178736	0.473	<MDL #
10) B trans-Chl...	5.082	5.936	38119	1903507	<MDL	0.748 #
11) B cis-Chlor...	5.143	6.001	801341	19022	0.441	<MDL #
12) B 4,4'-DDE	5.311	6.171	13061	316877	<MDL	0.127 #
13) MA Dieldrin	5.415	6.320	229945	237625	0.124	<MDL #
14) MA Endrin	5.667	6.537	194825	304399	0.129	0.142
15) B Endosulfa...	5.927	6.771	14980	142379	<MDL	<MDL #
16) A 4,4'-DDD	5.766f	6.673	131315	33141	0.106	<MDL #
17) MA 4,4'-DDT	5.997f	6.960	27998	1018911	<MDL	0.476 #
18) B Endrin al...	0.000	6.866	0	147675	N.D.	<MDL
19) B Endosulfa...	6.259f	7.093	59510	447018	<MDL	0.197 #
20) A Methoxychlor	0.000	7.413	0	12370	N.D.	<MDL
21) B Endrin ke...	0.000	7.572	0	465384	N.D.	0.193
22) Toxaphene-1	5.415	6.223	229945	17307	24.102	1.373 #
23) Toxaphene-2	5.548	6.507	262751	39932	25.255	2.394 #
24) Toxaphene-3	5.887	6.895	21869	143152	2.775	6.915 #
25) Toxaphene-4	5.967	6.998	78512	297808	2.797	4.994 #
26) Toxaphene-5	0.000	7.524	0	7739	N.D.	0.274

(f)=RT Delta > 1/2 Window (#)=Amounts differ by > 25% (m)=manual int.

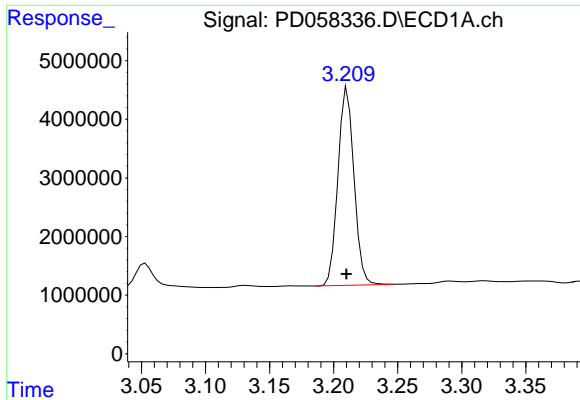
Data Path : Z:\pestpcbsrv\HPCHEM1\ECD_D\Data\PD060920\
 Data File : PD058336.D
 Signal(s) : Signal #1: ECD1A.ch Signal #2: ECD2B.ch
 Acq On : 09 Jun 2020 10:59
 Operator : AJ\MA
 Sample : L2906-05
 Misc :
 ALS Vial : 9 Sample Multiplier: 1

Integration File signal 1: autoint1.e
 Integration File signal 2: autoint2.e
 Quant Time: Jun 10 04:53:17 2020
 Quant Method : Z:\pestpcbsrv\HPCHEM1\ECD_D\Method\PD060320CLP.M
 Quant Title : GC Extractables
 QLast Update : Wed Jun 03 05:57:37 2020
 Response via : Initial Calibration
 Integrator: ChemStation

Volume Inj. : 1 µl
 Signal #1 Phase : ZB-MR2 Signal #2 Phase: ZB-MR1
 Signal #1 Info : 30M x 0.32mm x0.2 Signal #2 Info : 30M x 0.32mm x 0.50µm

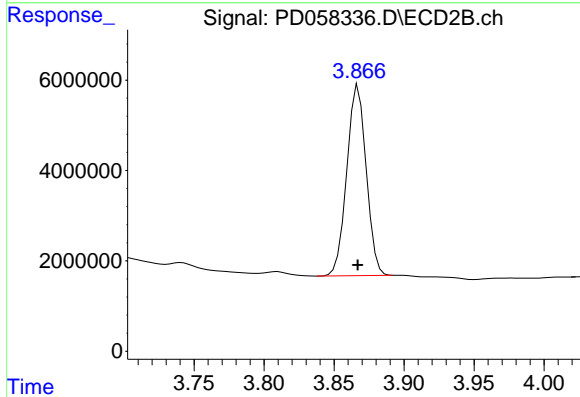


Instrument :
 ECD_D
 Client Sampled :

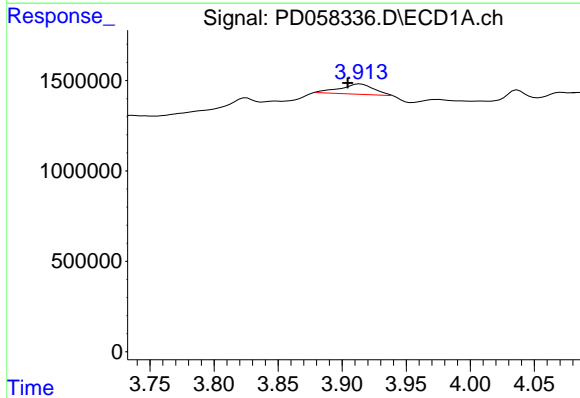


#1 Tetrachloro-m-xylene
 R.T.: 3.211 min
 Delta R.T.: 0.000 min
 Response: 29421885
 Conc: 19.53 ng/ml

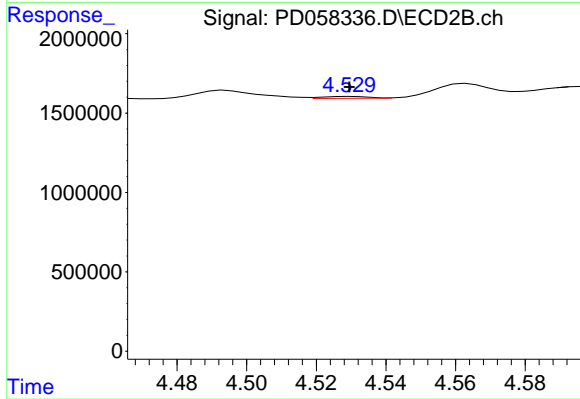
Instrument :
 ECD_D
 ClientSampleId :



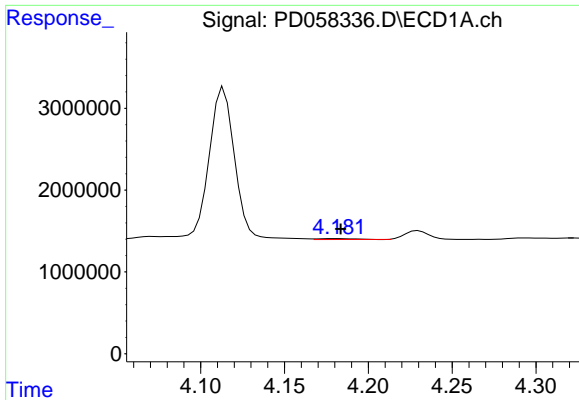
#1 Tetrachloro-m-xylene
 R.T.: 3.867 min
 Delta R.T.: 0.000 min
 Response: 40731664
 Conc: 19.30 ng/ml



#3 gamma-BHC (Lindane)
 R.T.: 3.914 min
 Delta R.T.: 0.010 min
 Response: 1016441
 Conc: 0.47 ng/ml

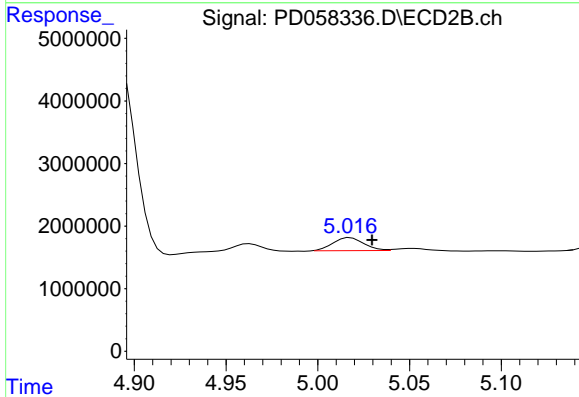


#3 gamma-BHC (Lindane)
 R.T.: 4.530 min
 Delta R.T.: 0.000 min
 Response: 104475
 Conc: N.D.

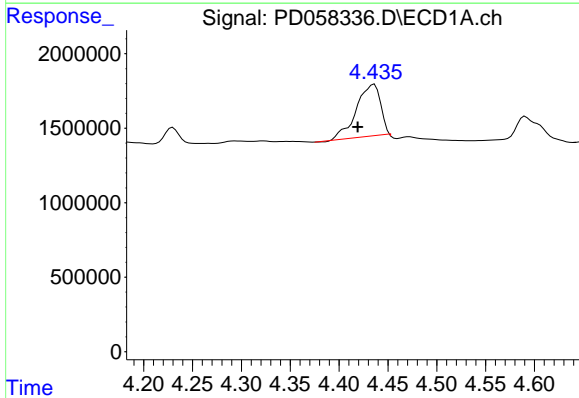


#4 Heptachlor
 R.T.: 4.181 min
 Delta R.T.: -0.002 min
 Response: 146783
 Conc: 0.11 ng/ml

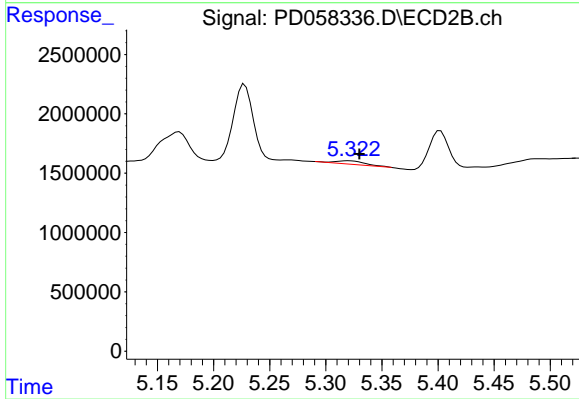
Instrument :
 ECD_D
 ClientSampled :



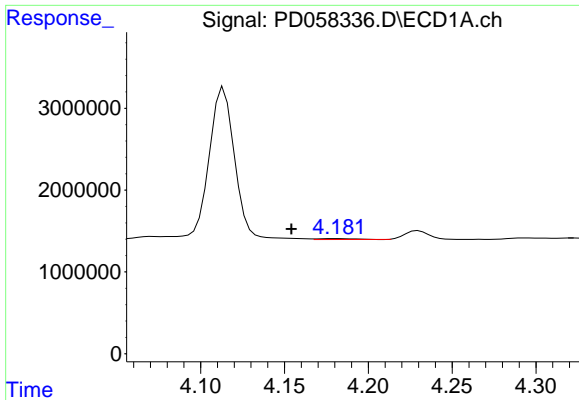
#4 Heptachlor
 R.T.: 5.018 min
 Delta R.T.: -0.012 min
 Response: 2439169
 Conc: 0.91 ng/ml



#5 Aldrin
 R.T.: 4.436 min
 Delta R.T.: 0.017 min
 Response: 5909810
 Conc: 2.99 ng/ml

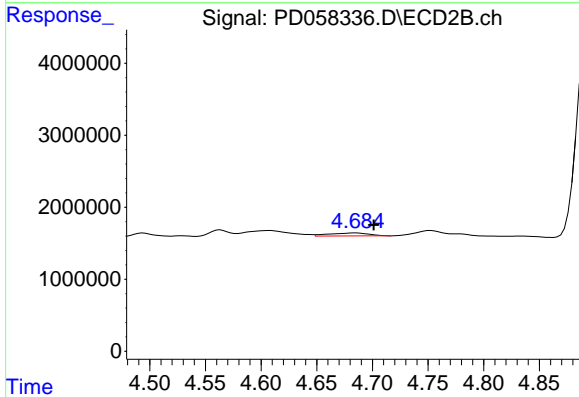


#5 Aldrin
 R.T.: 5.321 min
 Delta R.T.: -0.009 min
 Response: 465779
 Conc: 0.17 ng/ml

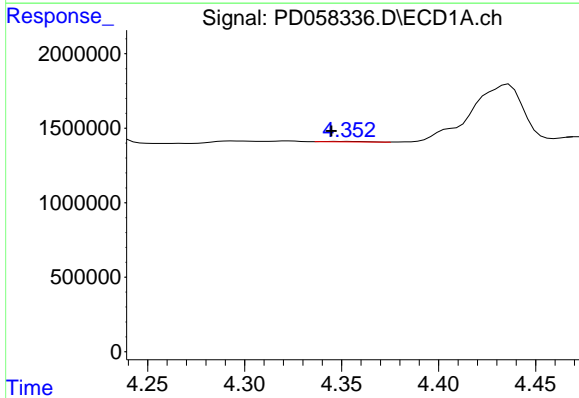


#6 beta-BHC
 R.T.: 4.181 min
 Delta R.T.: 0.027 min
 Response: 146783
 Conc: 0.16 ng/ml

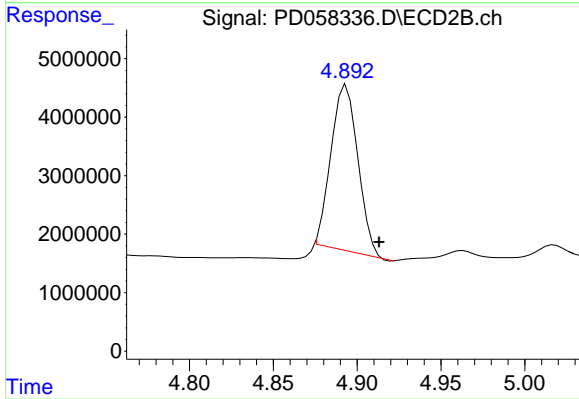
Instrument :
 ECD_D
 ClientSampleId :



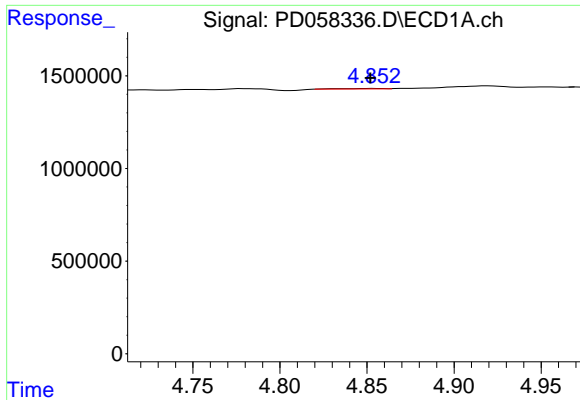
#6 beta-BHC
 R.T.: 4.686 min
 Delta R.T.: -0.016 min
 Response: 1034985
 Conc: 0.85 ng/ml



#7 delta-BHC
 R.T.: 4.354 min
 Delta R.T.: 0.009 min
 Response: 37101
 Conc: N.D.

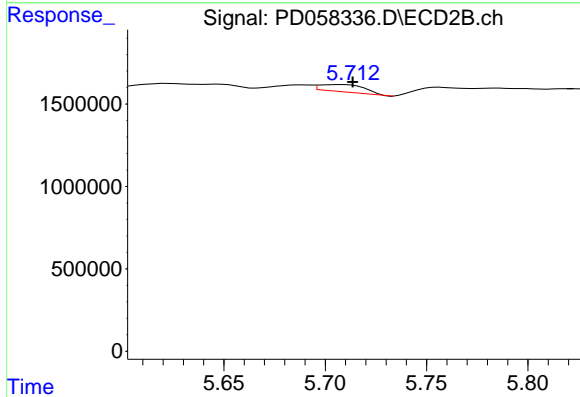


#7 delta-BHC
 R.T.: 4.894 min
 Delta R.T.: -0.019 min
 Response: 31526054
 Conc: 11.51 ng/ml

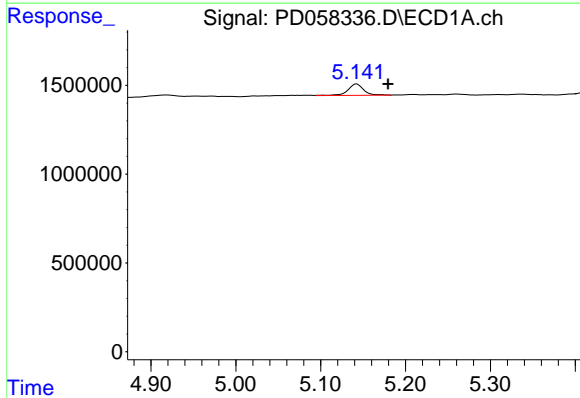


#8 Heptachlor epoxide
 R.T.: 4.853 min
 Delta R.T.: 0.001 min
 Response: 49952
 Conc: N.D.

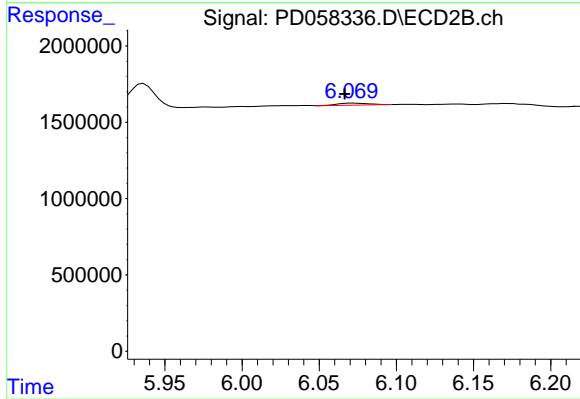
Instrument :
 ECD_D
 ClientSampled :



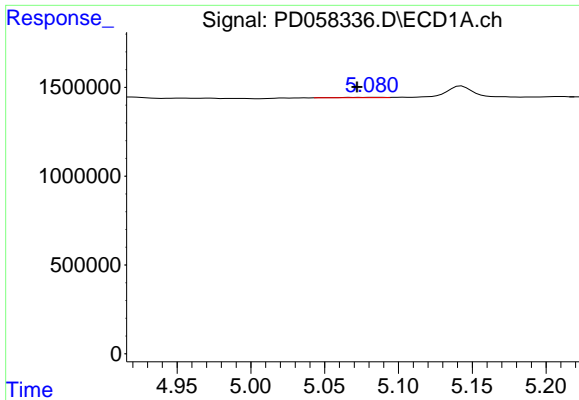
#8 Heptachlor epoxide
 R.T.: 5.708 min
 Delta R.T.: -0.005 min
 Response: 681086
 Conc: 0.27 ng/ml



#9 Endosulfan I
 R.T.: 5.143 min
 Delta R.T.: -0.036 min
 Response: 801341
 Conc: 0.47 ng/ml



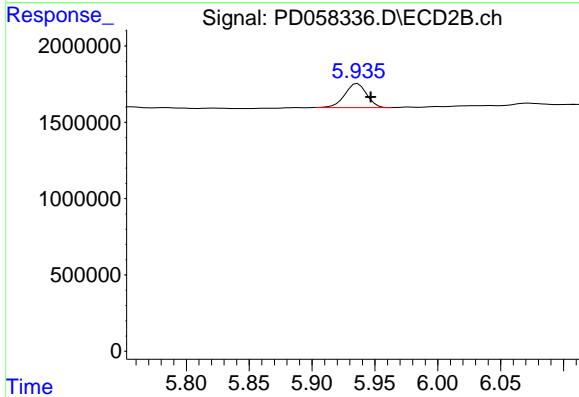
#9 Endosulfan I
 R.T.: 6.072 min
 Delta R.T.: 0.005 min
 Response: 178736
 Conc: N.D.



#10 trans-Chlordane

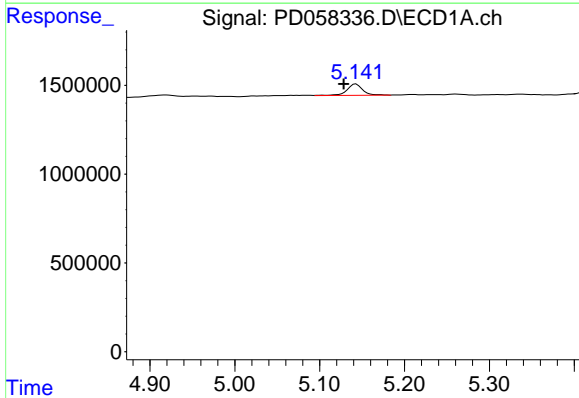
R.T.: 5.082 min
 Delta R.T.: 0.011 min
 Response: 38119
 Conc: N.D.

Instrument :
 ECD_D
 ClientSampleId :



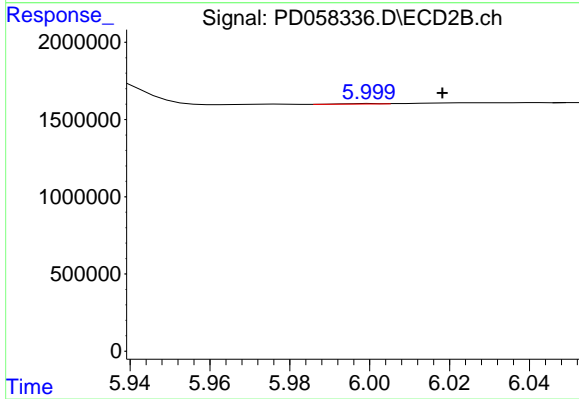
#10 trans-Chlordane

R.T.: 5.936 min
 Delta R.T.: -0.011 min
 Response: 1903507
 Conc: 0.75 ng/ml



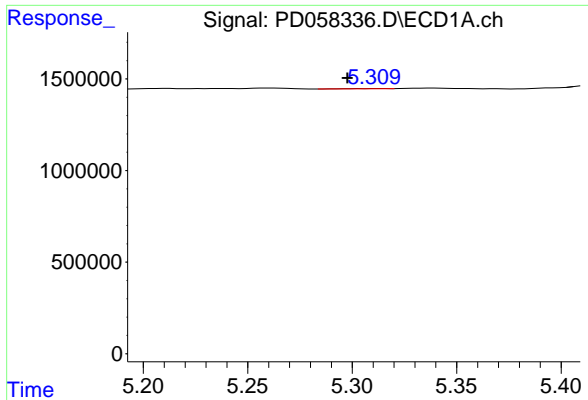
#11 cis-Chlordane

R.T.: 5.143 min
 Delta R.T.: 0.014 min
 Response: 801341
 Conc: 0.44 ng/ml



#11 cis-Chlordane

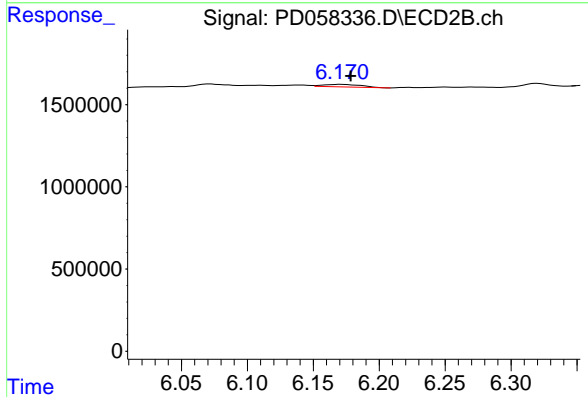
R.T.: 6.001 min
 Delta R.T.: -0.018 min
 Response: 19022
 Conc: N.D.



#12 4,4'-DDE

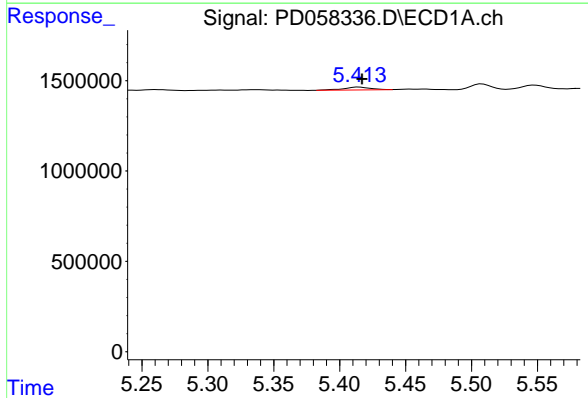
R.T.: 5.311 min
 Delta R.T.: 0.013 min
 Response: 13061
 Conc: N.D.

Instrument :
 ECD_D
 ClientSampleId :



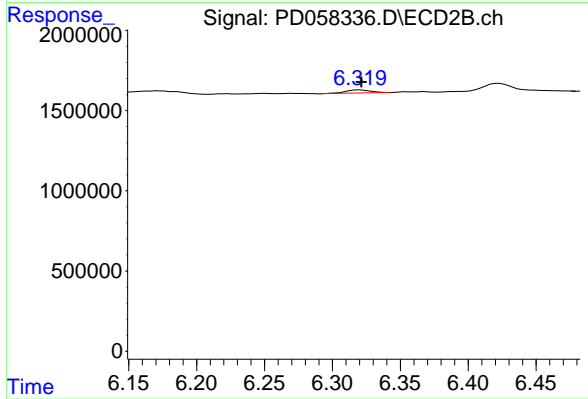
#12 4,4'-DDE

R.T.: 6.171 min
 Delta R.T.: -0.007 min
 Response: 316877
 Conc: 0.13 ng/ml



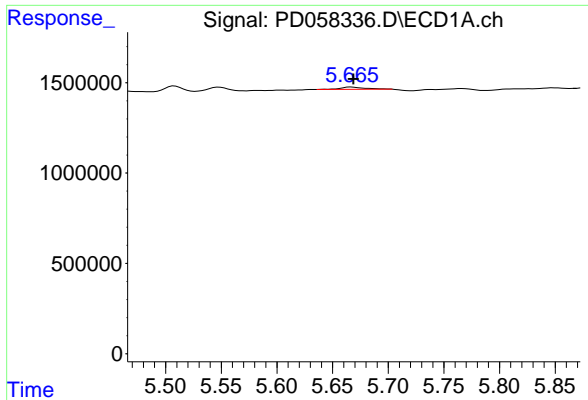
#13 Dieldrin

R.T.: 5.415 min
 Delta R.T.: -0.003 min
 Response: 229945
 Conc: 0.12 ng/ml



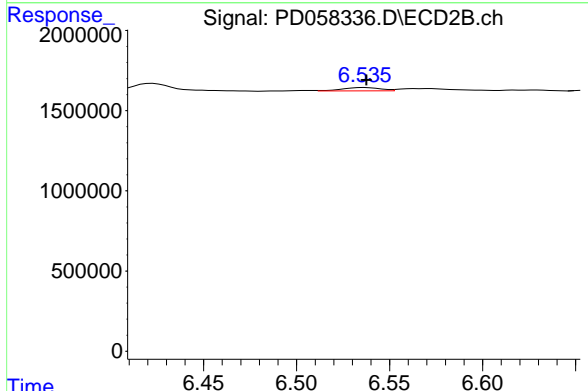
#13 Dieldrin

R.T.: 6.320 min
 Delta R.T.: -0.001 min
 Response: 237625
 Conc: N.D.

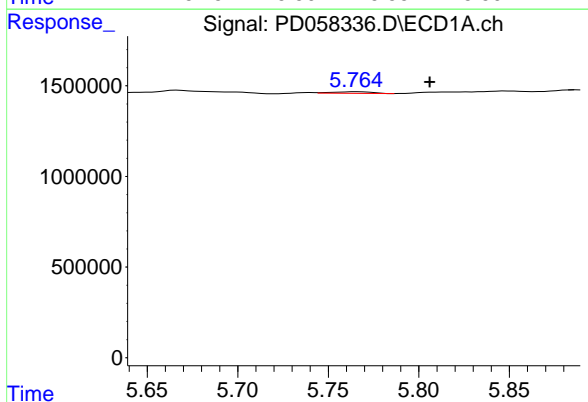


#14 Endrin
 R.T.: 5.667 min
 Delta R.T.: -0.002 min
 Response: 194825
 Conc: 0.13 ng/ml

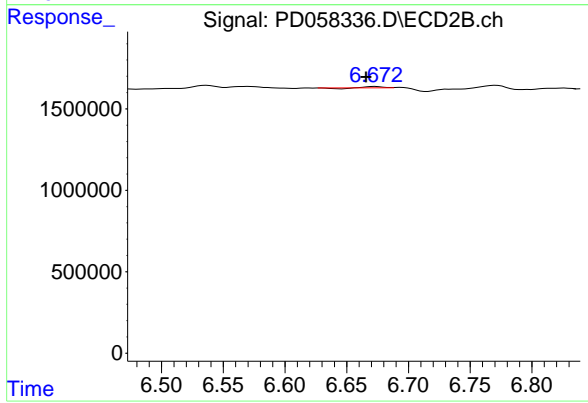
Instrument :
 ECD_D
 ClientSampleId :



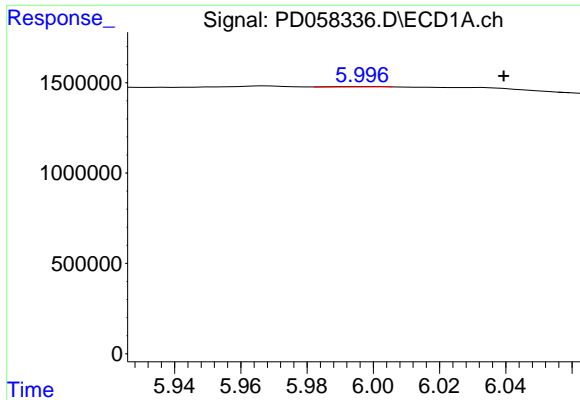
#14 Endrin
 R.T.: 6.537 min
 Delta R.T.: 0.000 min
 Response: 304399
 Conc: 0.14 ng/ml



#16 4,4'-DDD
 R.T.: 5.766 min
 Delta R.T.: -0.040 min
 Response: 131315
 Conc: 0.11 ng/ml

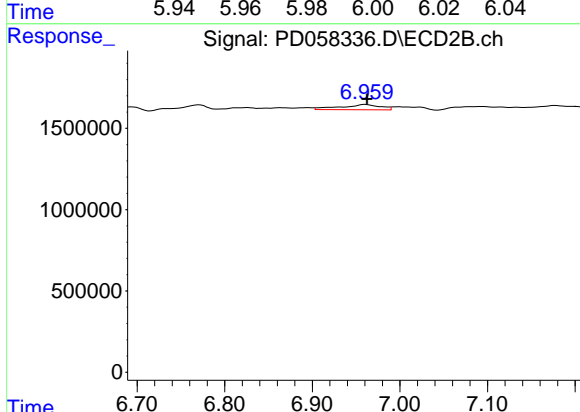


#16 4,4'-DDD
 R.T.: 6.673 min
 Delta R.T.: 0.007 min
 Response: 33141
 Conc: N.D.

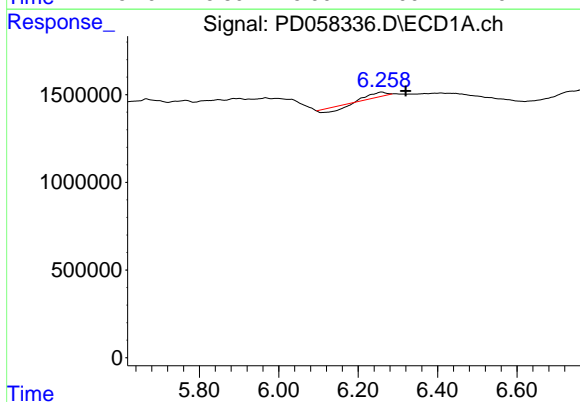


#17 4,4'-DDT
 R.T.: 5.997 min
 Delta R.T.: -0.042 min
 Response: 27998
 Conc: N.D.

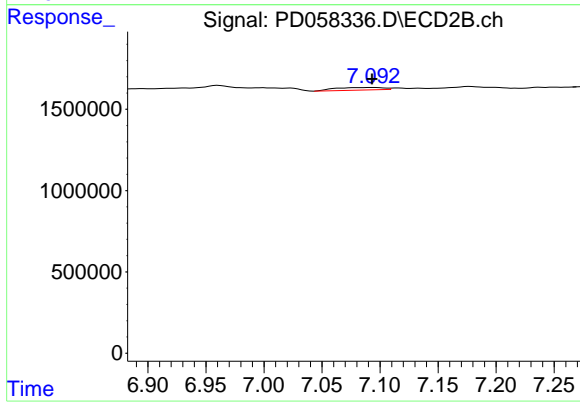
Instrument :
 ECD_D
 ClientSampleId :



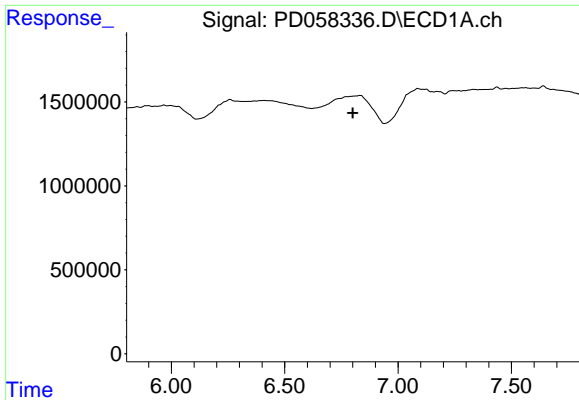
#17 4,4'-DDT
 R.T.: 6.960 min
 Delta R.T.: -0.002 min
 Response: 1018911
 Conc: 0.48 ng/ml



#19 Endosulfan Sulfate
 R.T.: 6.259 min
 Delta R.T.: -0.061 min
 Response: 59510
 Conc: N.D.



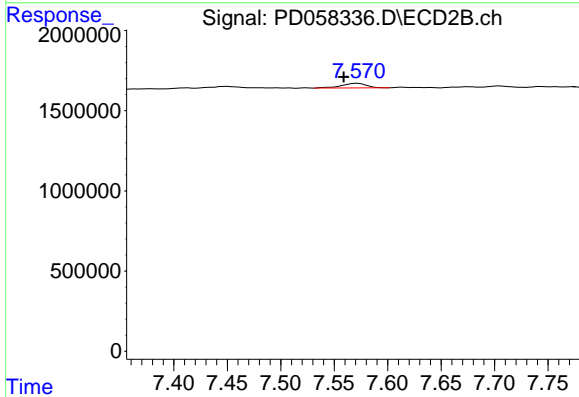
#19 Endosulfan Sulfate
 R.T.: 7.093 min
 Delta R.T.: 0.000 min
 Response: 447018
 Conc: 0.20 ng/ml



#21 Endrin ketone

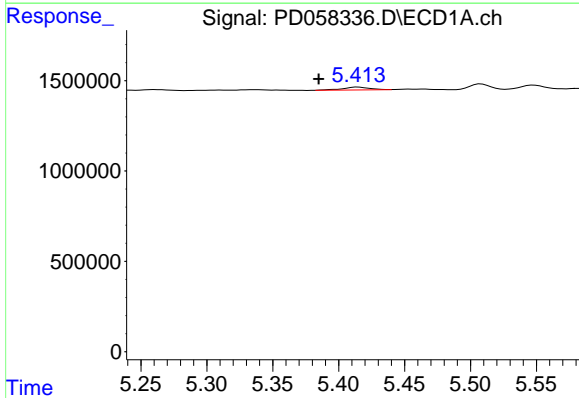
R.T.: 0.000 min
 Exp R.T.: 6.801 min
 Response: 0
 Conc: N.D.

Instrument :
 ECD_D
 ClientSampled :



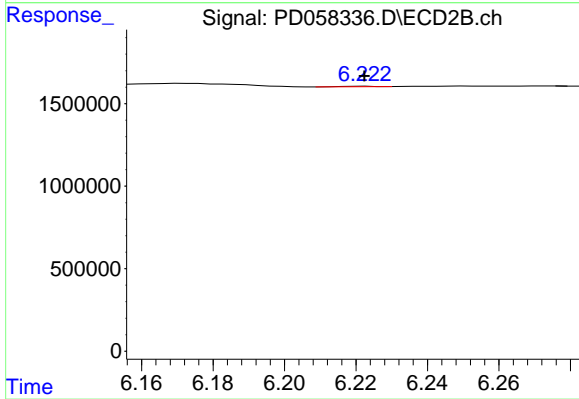
#21 Endrin ketone

R.T.: 7.572 min
 Delta R.T.: 0.013 min
 Response: 465384
 Conc: 0.19 ng/ml



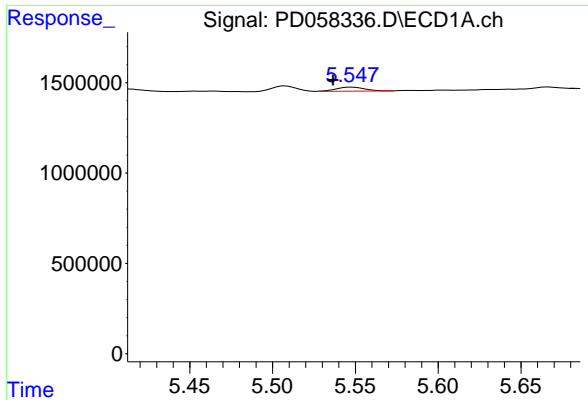
#22 Toxaphene-1

R.T.: 5.415 min
 Delta R.T.: 0.030 min
 Response: 229945
 Conc: 24.10 ng/ml



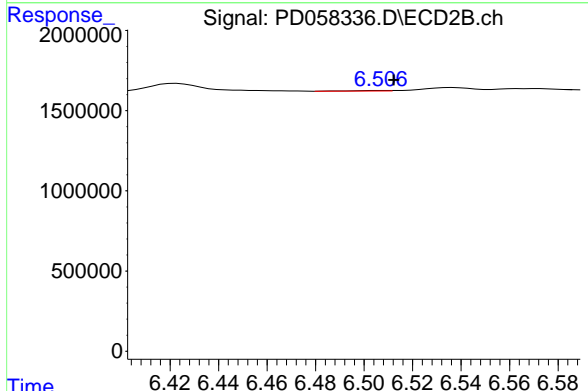
#22 Toxaphene-1

R.T.: 6.223 min
 Delta R.T.: 0.000 min
 Response: 17307
 Conc: 1.37 ng/ml

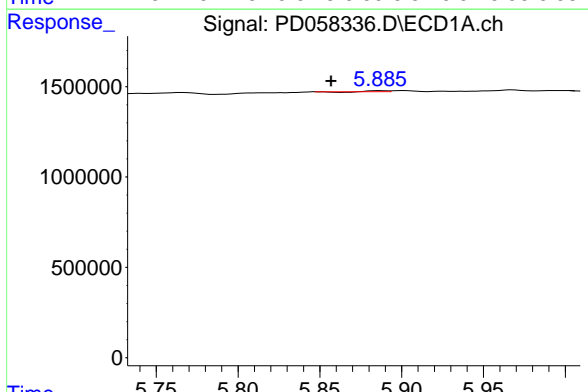


#23 Toxaphene-2
 R.T.: 5.548 min
 Delta R.T.: 0.012 min
 Response: 262751
 Conc: 25.26 ng/ml

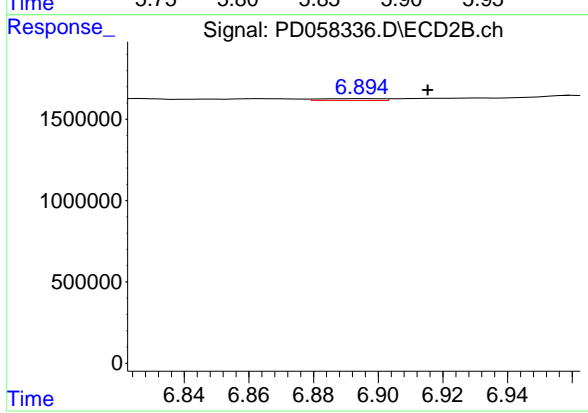
Instrument :
 ECD_D
 ClientSampleId :



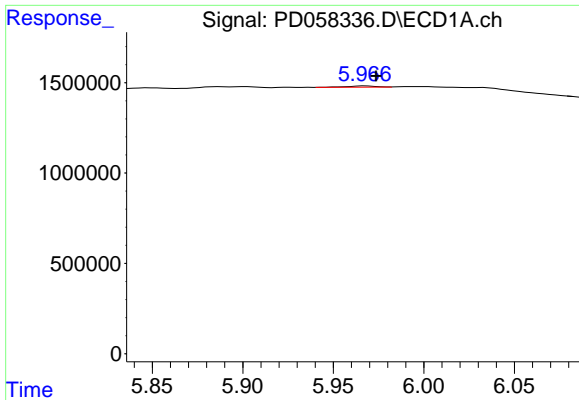
#23 Toxaphene-2
 R.T.: 6.507 min
 Delta R.T.: -0.005 min
 Response: 39932
 Conc: 2.39 ng/ml



#24 Toxaphene-3
 R.T.: 5.887 min
 Delta R.T.: 0.030 min
 Response: 21869
 Conc: 2.78 ng/ml

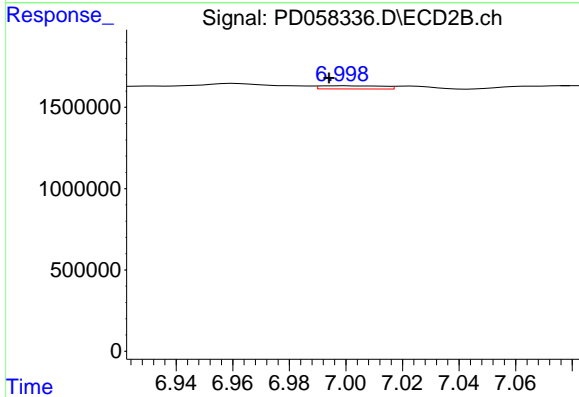


#24 Toxaphene-3
 R.T.: 6.895 min
 Delta R.T.: -0.020 min
 Response: 143152
 Conc: 6.91 ng/ml

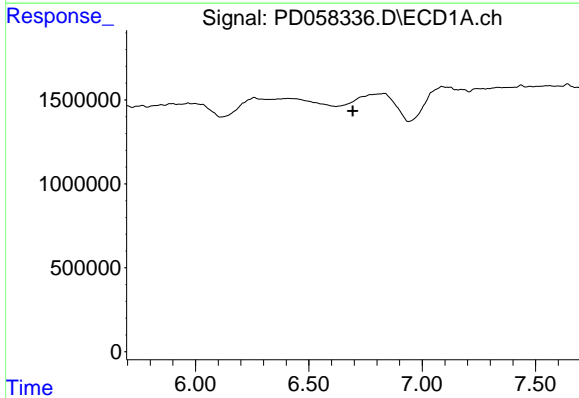


#25 Toxaphene-4
 R.T.: 5.967 min
 Delta R.T.: -0.006 min
 Response: 78512
 Conc: 2.80 ng/ml

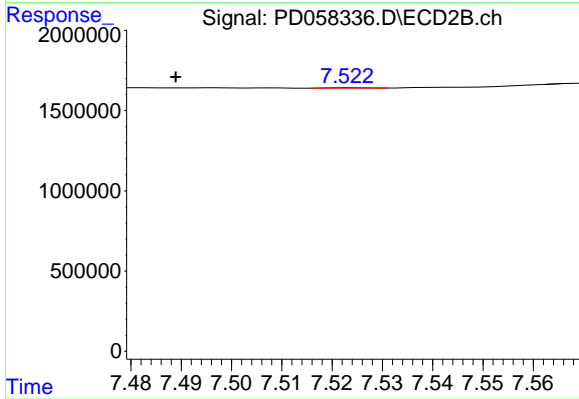
Instrument :
 ECD_D
 ClientSampleId :



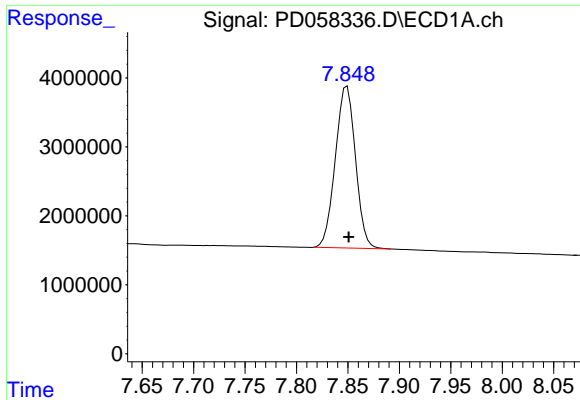
#25 Toxaphene-4
 R.T.: 6.998 min
 Delta R.T.: 0.004 min
 Response: 297808
 Conc: 4.99 ng/ml



#26 Toxaphene-5
 R.T.: 0.000 min
 Exp R.T. : 6.694 min
 Response: 0
 Conc: N.D.



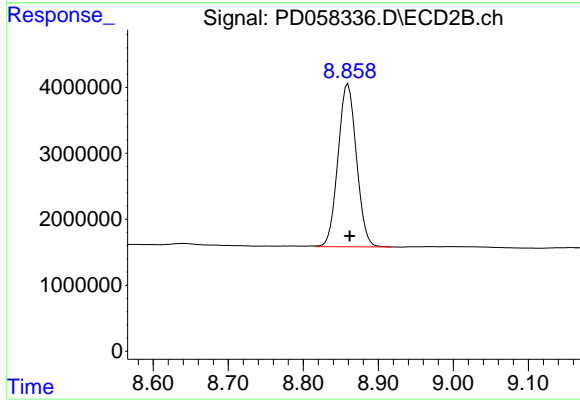
#26 Toxaphene-5
 R.T.: 7.524 min
 Delta R.T.: 0.035 min
 Response: 7739
 Conc: 0.27 ng/ml



#27 Decachlorobiphenyl

R.T.: 7.849 min
Delta R.T.: -0.002 min
Response: 31894482
Conc: 19.50 ng/ml

Instrument :
ECD_D
ClientSampleId :



#27 Decachlorobiphenyl

R.T.: 8.860 min
Delta R.T.: -0.002 min
Response: 42117422
Conc: 19.86 ng/ml