

Data Path : Z:\pestpcbsrv\HPCHEM1\ECD_D\Data\PD060920\
 Data File : PD058330.D
 Signal(s) : Signal #1: ECD1A.ch Signal #2: ECD2B.ch
 Acq On : 09 Jun 2020 08:57
 Operator : AJ\MA
 Sample : PIBLK10
 Misc :
 ALS Vial : 2 Sample Multiplier: 1

Instrument :
 ECD_D
 ClientSampleId :
 PIBLK10

Integration File signal 1: autoint1.e
 Integration File signal 2: autoint2.e
 Quant Time: Jun 10 04:51:20 2020
 Quant Method : Z:\pestpcbsrv\HPCHEM1\ECD_D\Method\PD060320CLP.M
 Quant Title : GC Extractables
 QLast Update : Wed Jun 03 05:57:37 2020
 Response via : Initial Calibration
 Integrator: ChemStation

Volume Inj. : 1 µl
 Signal #1 Phase : ZB-MR2 Signal #2 Phase: ZB-MR1
 Signal #1 Info : 30M x 0.32mm x0.2 Signal #2 Info : 30M x 0.32mm x 0.50µm

Compound	RT#1	RT#2	Resp#1	Resp#2	ng/ml	ng/ml

System Monitoring Compounds						
1) SA Tetrachlo...	3.211	3.866	34061914	46041125	22.615	21.817
27) SA Decachlor...	7.850	8.858	57396520	74648162	35.090	35.192

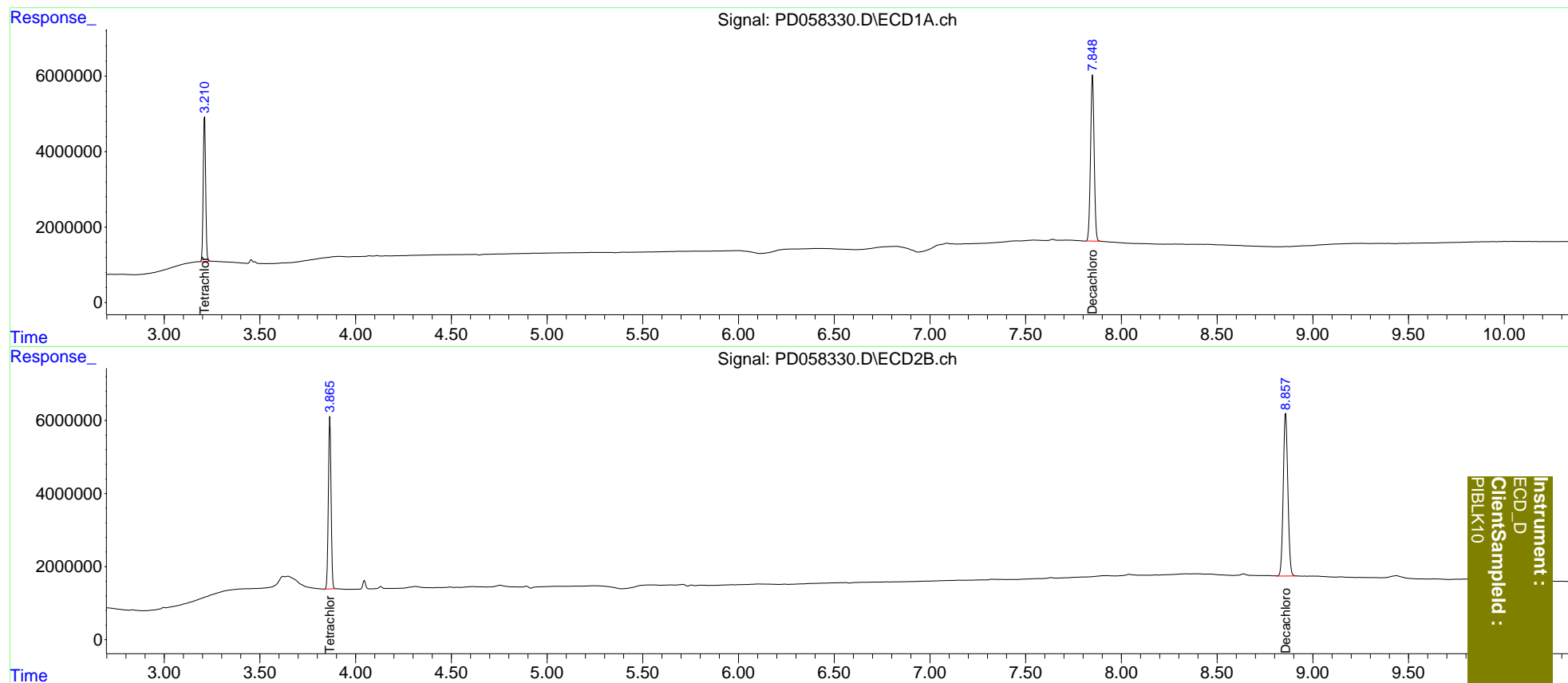
Target Compounds

(f)=RT Delta > 1/2 Window (#)=Amounts differ by > 25% (m)=manual int.

Data Path : Z:\pestpcbsrv\HPCHEM1\ECD_D\Data\PD060920\
 Data File : PD058330.D
 Signal(s) : Signal #1: ECD1A.ch Signal #2: ECD2B.ch
 Acq On : 09 Jun 2020 08:57
 Operator : AJ\MA
 Sample : PIBLK10
 Misc :
 ALS Vial : 2 Sample Multiplier: 1

Integration File signal 1: autoint1.e
 Integration File signal 2: autoint2.e
 Quant Time: Jun 10 04:51:20 2020
 Quant Method : Z:\pestpcbsrv\HPCHEM1\ECD_D\Method\PD060320CLP.M
 Quant Title : GC Extractables
 QLast Update : Wed Jun 03 05:57:37 2020
 Response via : Initial Calibration
 Integrator: ChemStation

Volume Inj. : 1 µl
 Signal #1 Phase : ZB-MR2 Signal #2 Phase: ZB-MR1
 Signal #1 Info : 30M x 0.32mm x0.2 Signal #2 Info : 30M x 0.32mm x 0.50µm



Instrument :
 ECD_D
 ClientSampleId :
 PIBLK10