

Data Path : Z:\pestpcbsrv\HPCHEM1\ECD_D\Data\PD060922\
 Data File : PD070235.D
 Signal(s) : Signal #1: ECD1A.ch Signal #2: ECD2B.ch
 Acq On : 09 Jun 2022 13:31
 Operator : AR\AJ
 Sample : N3209-14
 Misc :
 ALS Vial : 10 Sample Multiplier: 1

Instrument :
 ECD_D
 ClientSampleId :

Integration File signal 1: autoint1.e
 Integration File signal 2: autoint2.e
 Quant Time: Jun 09 14:24:43 2022
 Quant Method : Z:\pestpcbsrv\HPCHEM1\ECD_D\Method\PD060622.M
 Quant Title : GC Extractables
 QLast Update : Wed Jun 08 02:48:31 2022
 Response via : Initial Calibration
 Integrator: ChemStation

Volume Inj. : 2 µl
 Signal #1 Phase : ZB-MR2 Signal #2 Phase: ZB-MR1
 Signal #1 Info : 30M x 0.32mm x0.2 Signal #2 Info : 30M x 0.32mm x 0.50µm

Compound	RT#1	RT#2	Resp#1	Resp#2	ng/ml	ng/ml

System Monitoring Compounds						
1) SA Tetrachlo...	3.443	4.170	9835762	64406862	9.060	6.598 #
28) SA Decachlor...	8.195	9.366	10672833	62615184	9.597	10.180

Target Compounds

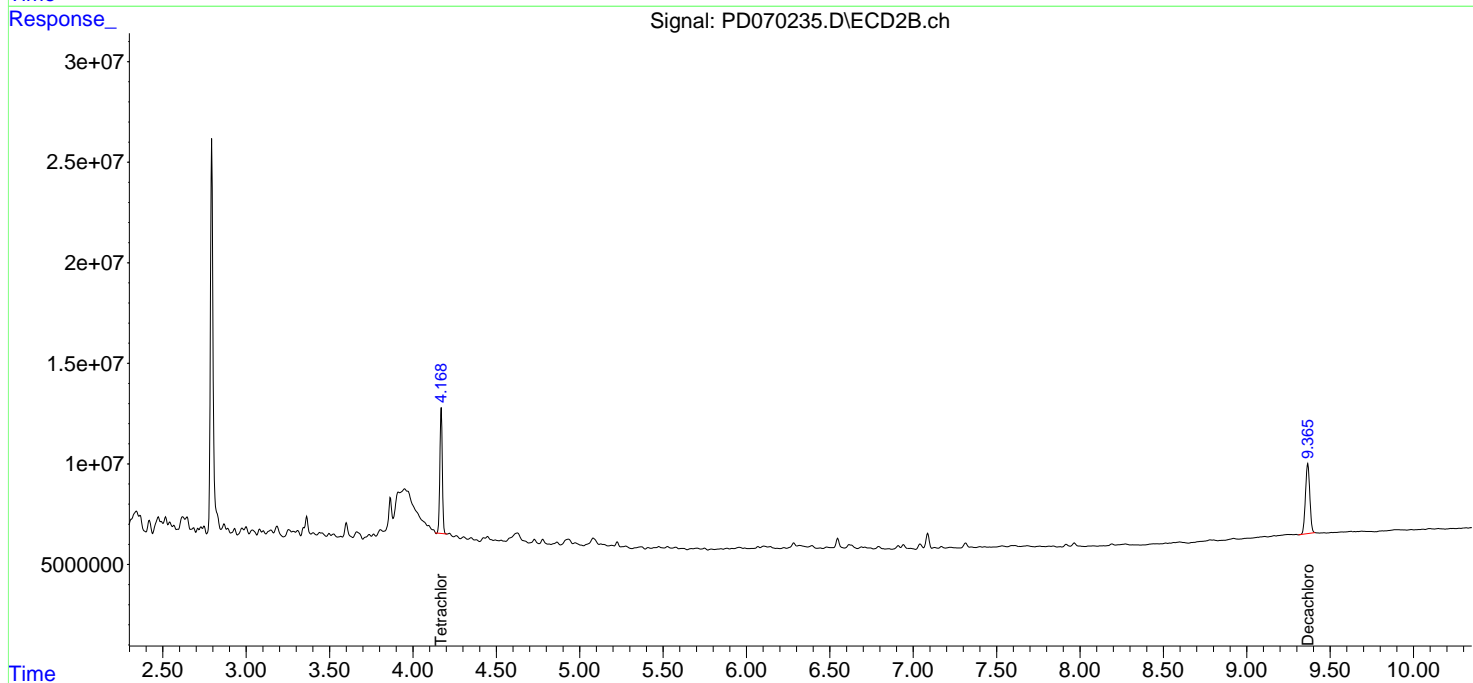
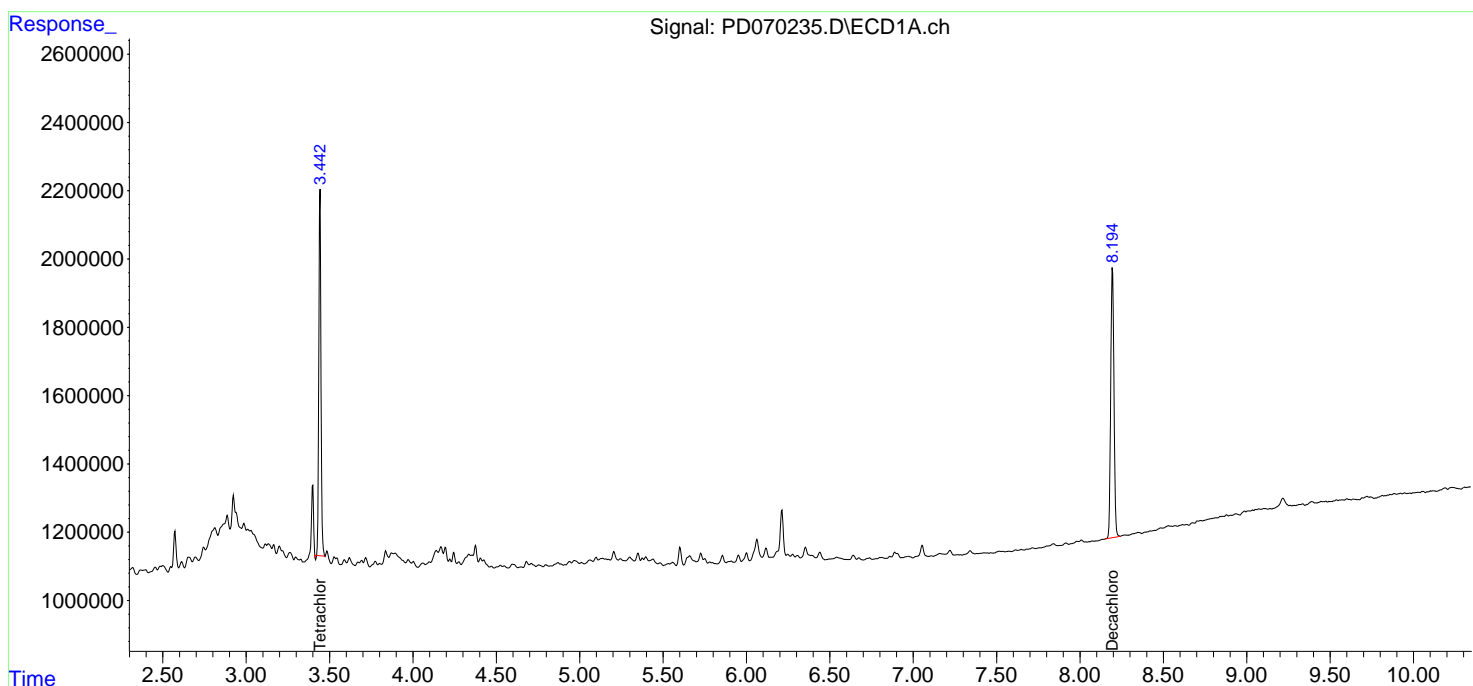
(f)=RT Delta > 1/2 Window (#)=Amounts differ by > 25% (m)=manual int.

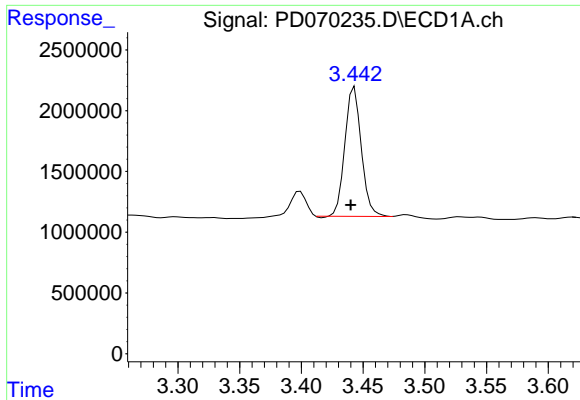
Data Path : Z:\pestpcbsrv\HPCHEM1\ECD_D\Data\PD060922\
 Data File : PD070235.D
 Signal(s) : Signal #1: ECD1A.ch Signal #2: ECD2B.ch
 Acq On : 09 Jun 2022 13:31
 Operator : AR\AJ
 Sample : N3209-14
 Misc :
 ALS Vial : 10 Sample Multiplier: 1

Instrument :
 ECD_D
 ClientSampleId :

Integration File signal 1: autoint1.e
 Integration File signal 2: autoint2.e
 Quant Time: Jun 09 14:24:43 2022
 Quant Method : Z:\pestpcbsrv\HPCHEM1\ECD_D\Method\PD060622.M
 Quant Title : GC Extractables
 QLast Update : Wed Jun 08 02:48:31 2022
 Response via : Initial Calibration
 Integrator: ChemStation

Volume Inj. : 2 µl
 Signal #1 Phase : ZB-MR2 Signal #2 Phase: ZB-MR1
 Signal #1 Info : 30M x 0.32mm x 0.2 Signal #2 Info : 30M x 0.32mm x 0.50µm

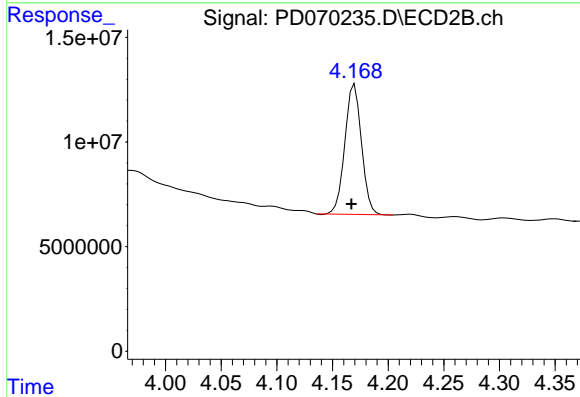




#1 Tetrachloro-m-xylene

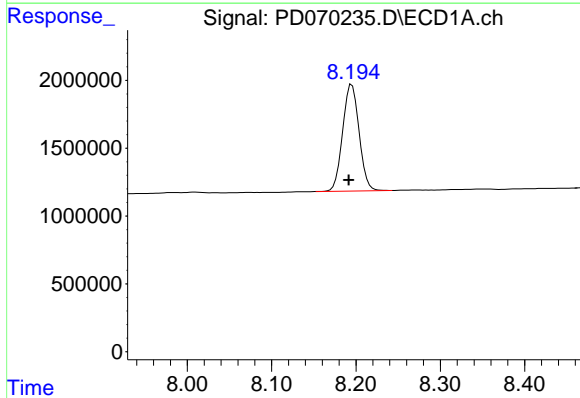
R.T.: 3.443 min
 Delta R.T.: 0.003 min
 Response: 9835762
 Conc: 9.06 ng/ml

Instrument :
 ECD_D
 ClientSampleId :



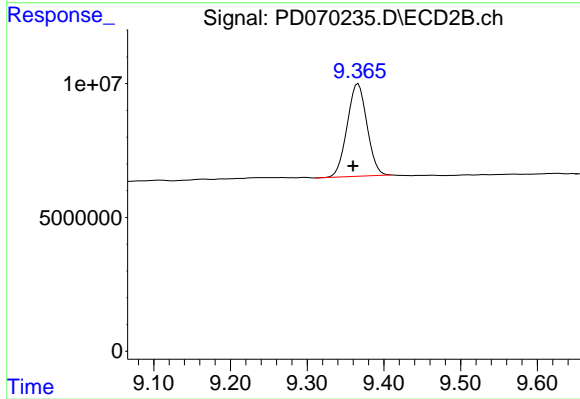
#1 Tetrachloro-m-xylene

R.T.: 4.170 min
 Delta R.T.: 0.003 min
 Response: 64406862
 Conc: 6.60 ng/ml



#28 Decachlorobiphenyl

R.T.: 8.195 min
 Delta R.T.: 0.004 min
 Response: 10672833
 Conc: 9.60 ng/ml



#28 Decachlorobiphenyl

R.T.: 9.366 min
 Delta R.T.: 0.007 min
 Response: 62615184
 Conc: 10.18 ng/ml