

Data Path : Z:\pestpcbsrv\HPCHEM1\ECD_D\Data\PD060923\
 Data File : PD075732.D
 Signal(s) : Signal #1: ECD1A.ch Signal #2: ECD2B.ch
 Acq On : 09 Jun 2023 11:55
 Operator : AR\AJ
 Sample : 03062-09
 Misc :
 ALS Vial : 14 Sample Multiplier: 1

Instrument :
 ECD_D
 ClientSampleId :
 EZEL5

Integration File signal 1: autoint1.e
 Integration File signal 2: autoint2.e
 Quant Time: Jun 09 21:31:30 2023
 Quant Method : Z:\pestpcbsrv\HPCHEM1\ECD_D\Method\PD060223CLP.M
 Quant Title : GC Extractables
 QLast Update : Fri Jun 02 04:01:43 2023
 Response via : Initial Calibration
 Integrator: ChemStation

Volume Inj. : 1 µl
 Signal #1 Phase : ZB-MR1 Signal #2 Phase: ZB-MR2
 Signal #1 Info : 30M x 0.32mm x0.5 Signal #2 Info : 30M x 0.32mm x 0.25µm

Compound	RT#1	RT#2	Resp#1	Resp#2	ng/ml	ng/ml

System Monitoring Compounds						
1) SA Tetrachlo...	3.547	2.768	30257298	14421298	15.135	14.224
27) SA Decachlor...	9.092	7.916	57499944	24378134	25.070	25.959

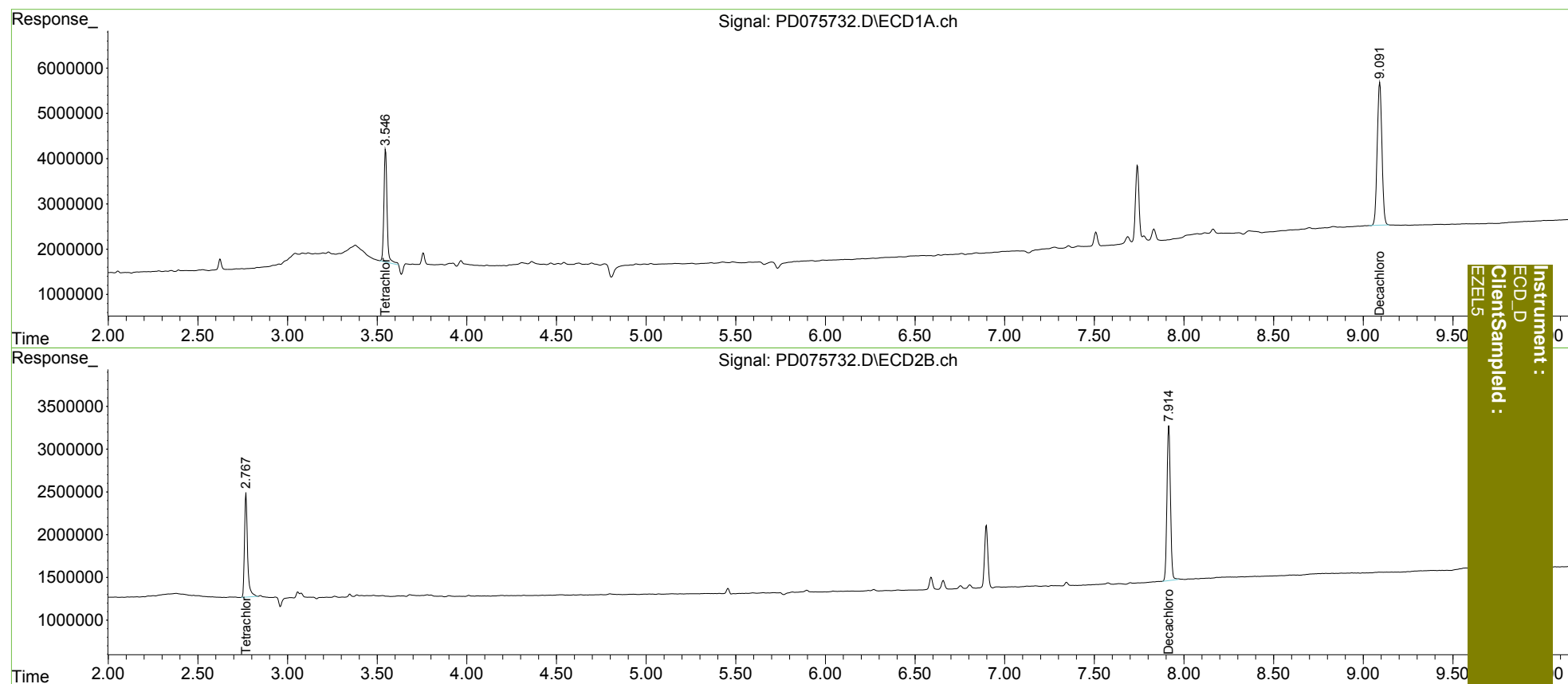
Target Compounds

 (f)=RT Delta > 1/2 Window (#)=Amounts differ by > 25% (m)=manual int.

Data Path : Z:\pestpcbsrv\HPCHEM1\ECD_D\Data\PD060923\
 Data File : PD075732.D
 Signal(s) : Signal #1: ECD1A.ch Signal #2: ECD2B.ch
 Acq On : 09 Jun 2023 11:55
 Operator : AR\AJ
 Sample : 03062-09
 Misc :
 ALS Vial : 14 Sample Multiplier: 1

Integration File signal 1: autoint1.e
 Integration File signal 2: autoint2.e
 Quant Time: Jun 09 21:31:30 2023
 Quant Method : Z:\pestpcbsrv\HPCHEM1\ECD_D\Method\PD060223CLP.M
 Quant Title : GC Extractables
 QLast Update : Fri Jun 02 04:01:43 2023
 Response via : Initial Calibration
 Integrator: ChemStation

Volume Inj. : 1 µl
 Signal #1 Phase : ZB-MR1 Signal #2 Phase: ZB-MR2
 Signal #1 Info : 30M x 0.32mm x0.5 Signal #2 Info : 30M x 0.32mm x 0.25µm



Instrument :
 ECD_D
 ClientSampleId :
 EZELS