

Data Path : Z:\pestpcbsrv\HPCHEM1\ECD\_D\Data\PD061025\  
 Data File : PD088868.D  
 Signal(s) : Signal #1: ECD1A.ch Signal #2: ECD2B.ch  
 Acq On : 10 Jun 2025 15:16  
 Operator : AR\AJ  
 Sample : Q2241-01  
 Misc :  
 ALS Vial : 17 Sample Multiplier: 1

Instrument :  
 ECD\_D  
 ClientSampleId :

Integration File signal 1: autoint1.e  
 Integration File signal 2: autoint2.e  
 Quant Time: Jun 10 15:25:45 2025  
 Quant Method : Z:\pestpcbsrv\HPCHEM1\ECD\_D\Method\PD051925.M  
 Quant Title : GC Extractables  
 QLast Update : Mon May 19 15:27:28 2025  
 Response via : Initial Calibration  
 Integrator: ChemStation

Volume Inj. : 1 µl  
 Signal #1 Phase : ZB-MR2 Signal #2 Phase: ZB-MR2  
 Signal #1 Info : 30M x 0.32mm x0.5 Signal #2 Info : 30M x 0.32mm x 0.25µm

Compound	RT#1	RT#2	Resp#1	Resp#2	ng/ml	ng/ml
-----						
System Monitoring Compounds						
1) SA Tetrachlo...	3.548	2.880	31992305	195.7E6	14.786	12.937
28) SA Decachlor...	9.073	8.072	46401323	214.8E6	13.558	11.763
Target Compounds						
2) A alpha-BHC	0.000	3.403	0	795140	N.D.	0.033 #
3) MA gamma-BHC...	0.000	3.723	0	1303331	N.D.	0.059 #
4) MA Heptachlor	0.000	4.072	0	4758361	N.D.	0.212 #
5) MB Aldrin	5.290f	4.349f	15547	9726495	0.004	0.444 #
6) B beta-BHC	0.000	4.033	0	6907698	N.D.	0.709 #
7) B delta-BHC	4.776	4.275	1700812	623735	0.402	0.028 #
8) B Heptachlo...	5.682	4.868	418255	3694700	0.105	0.186 #
9) A Endosulfan I	6.104f	5.272f	403115	4604511	0.107	0.243 #
10) B gamma-Chl...	5.940	5.124	806128	19174988	0.202	0.899 #
11) B alpha-Chl...	6.029	5.187	1618830	15510298	0.404	0.752 #
12) B 4,4'-DDE	6.197	5.375	498528	33976547	0.139	1.625 #
13) MA Dieldrin	6.370f	5.508	367263	11832622	0.092	0.562 #
14) MA Endrin	0.000	5.793	0	18739918	N.D.	0.972 #
16) A 4,4'-DDD	6.721	5.931	1890700	922481	0.679	0.053 #
17) MA 4,4'-DDT	7.021	6.181	1899500	12865435	0.608	0.709
18) B Endrin al...	6.893f	6.284f	315154	8791139	0.122	0.631 #
19) B Endosulfa...	7.132f	6.481	551304	4972331	0.172	0.280 #
20) A Methoxychlor	0.000	6.736f	0	5093454	N.D.	0.532 #
21) B Endrin ke...	7.615f	7.022f	621832	5842014	0.182	0.302 #
22) Mirex	8.117	0.000	205411	0	0.079	N.D. #
23) Chlordane-1	0.000	3.899	0	14528567	N.D.	17.582 #
24) Chlordane-2	5.253	4.505	376781	14684543	2.053	17.399 #
25) Chlordane-3	5.940	5.124	806128	19174988	1.090	7.272 #
26) Chlordane-4	6.029	5.187	1618830	15510298	1.806	7.010 #
27) Chlordane-5	6.893	6.106	315154	585867	2.072	0.585 #

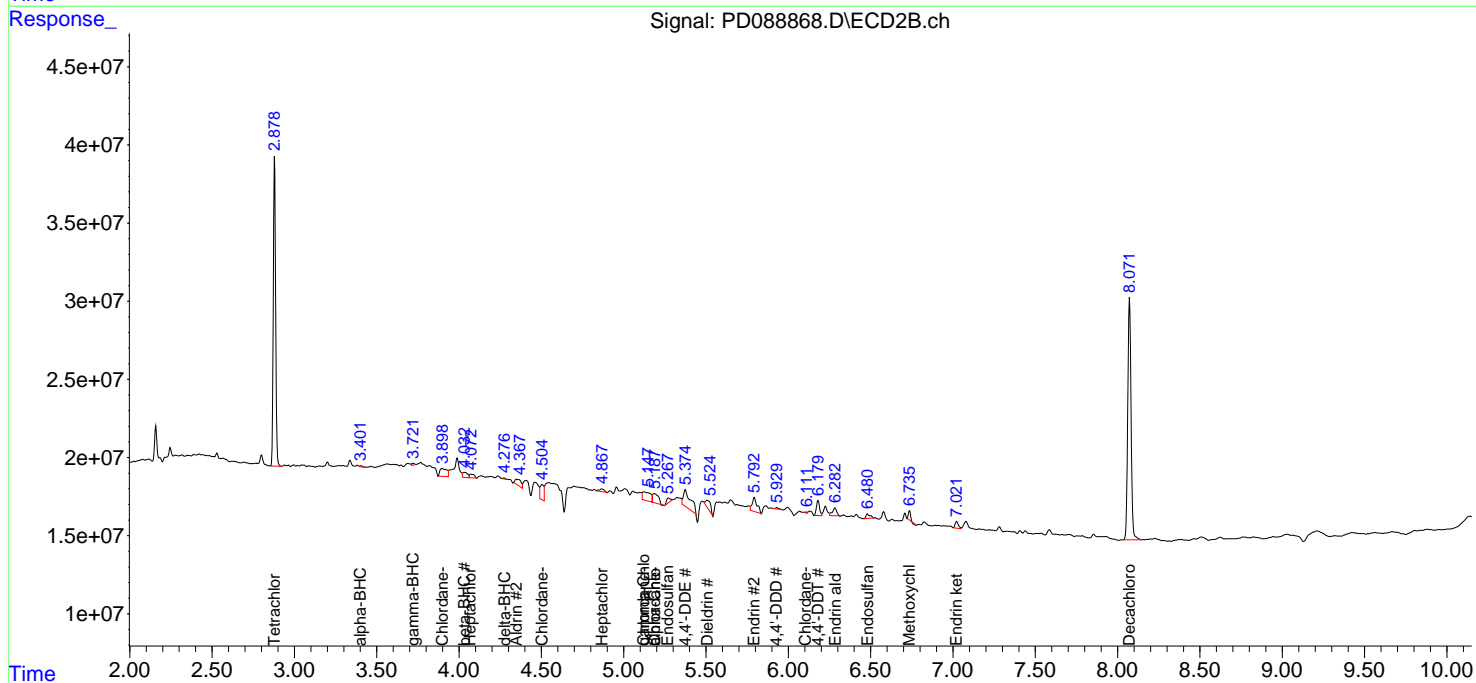
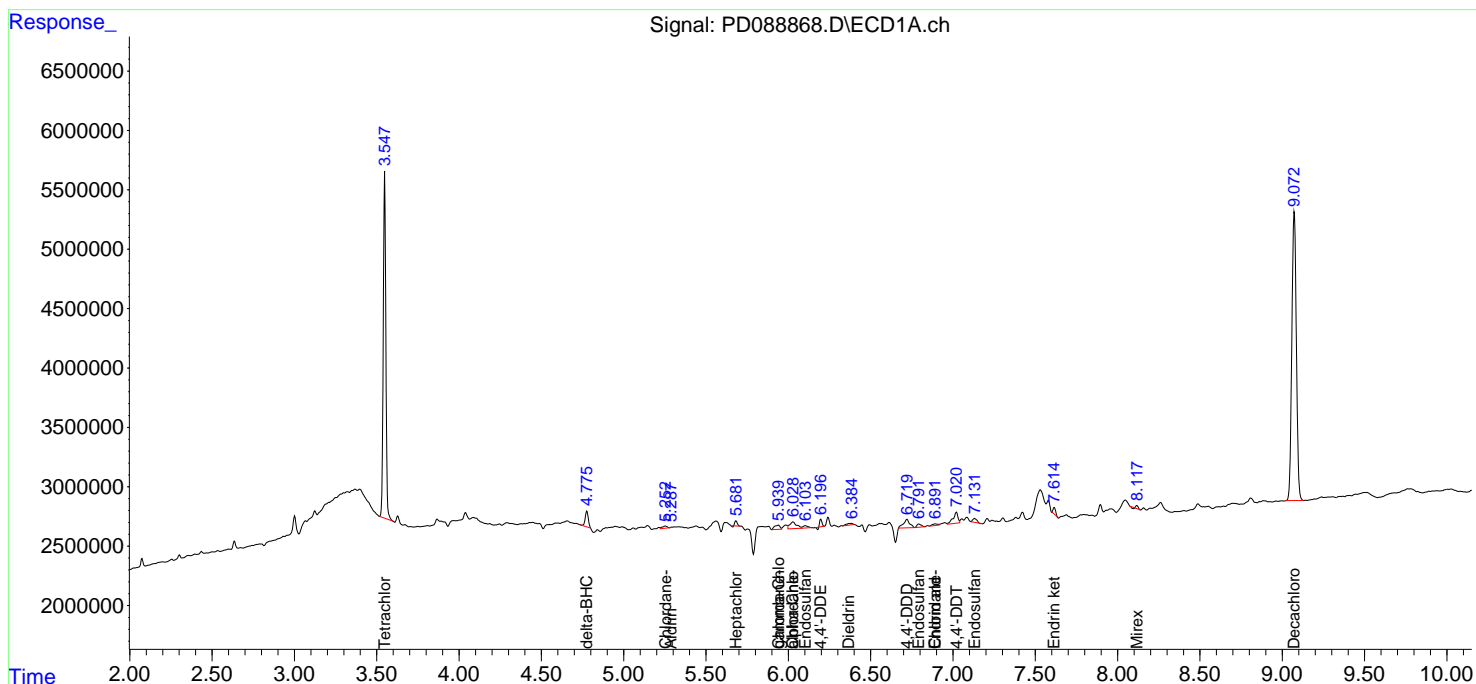
(f)=RT Delta > 1/2 Window (#)=Amounts differ by > 25% (m)=manual int.

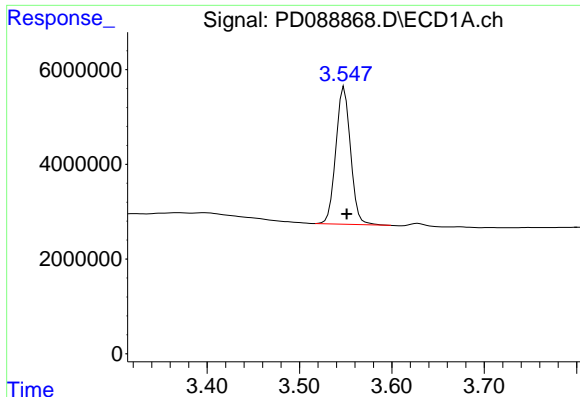
Data Path : Z:\pestpcbsrv\HPCHEM1\ECD\_D\Data\PD061025\  
 Data File : PD088868.D  
 Signal(s) : Signal #1: ECD1A.ch Signal #2: ECD2B.ch  
 Acq On : 10 Jun 2025 15:16  
 Operator : AR\AJ  
 Sample : Q2241-01  
 Misc :  
 ALS Vial : 17 Sample Multiplier: 1

Instrument :  
 ECD\_D  
 ClientSampleId :

Integration File signal 1: autoint1.e  
 Integration File signal 2: autoint2.e  
 Quant Time: Jun 10 15:25:45 2025  
 Quant Method : Z:\pestpcbsrv\HPCHEM1\ECD\_D\Method\PD051925.M  
 Quant Title : GC Extractables  
 QLast Update : Mon May 19 15:27:28 2025  
 Response via : Initial Calibration  
 Integrator: ChemStation

Volume Inj. : 1 µl  
 Signal #1 Phase : ZB-MR1 Signal #2 Phase: ZB-MR2  
 Signal #1 Info : 30M x 0.32mm x0.5 Signal #2 Info : 30M x 0.32mm x 0.25µm

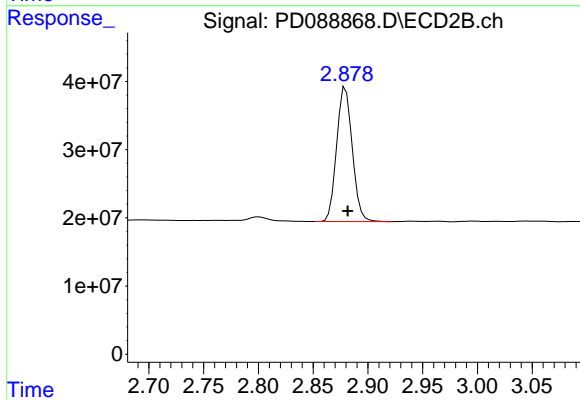




#1 Tetrachloro-m-xylene

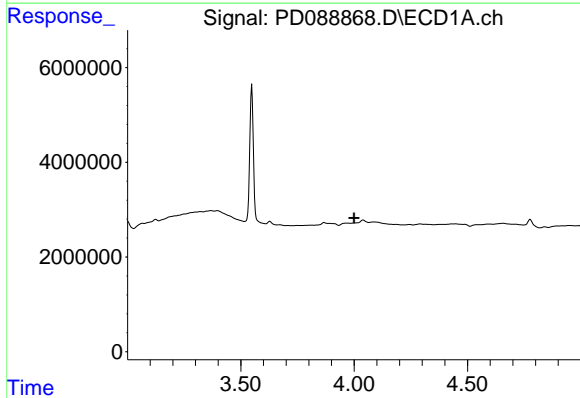
R.T.: 3.548 min  
 Delta R.T.: -0.003 min  
 Response: 31992305  
 Conc: 14.79 ng/ml

Instrument :  
 ECD\_D  
 ClientSampleId :



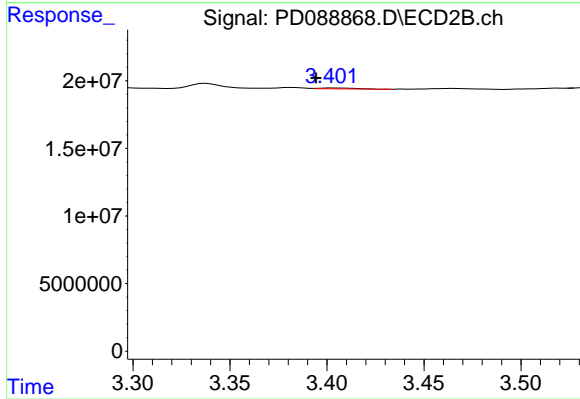
#1 Tetrachloro-m-xylene

R.T.: 2.880 min  
 Delta R.T.: -0.002 min  
 Response: 195693927  
 Conc: 12.94 ng/ml



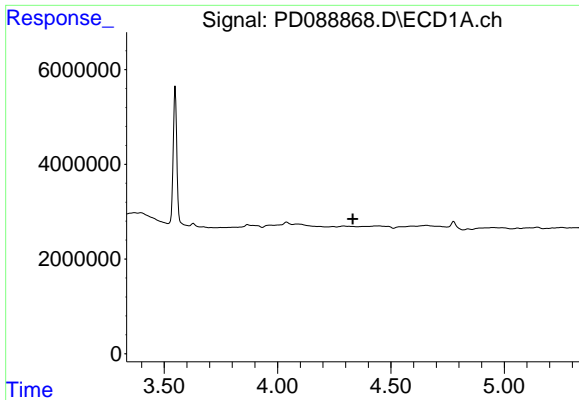
#2 alpha-BHC

R.T.: 0.000 min  
 Exp R.T. : 4.000 min  
 Response: 0  
 Conc: N.D.



#2 alpha-BHC

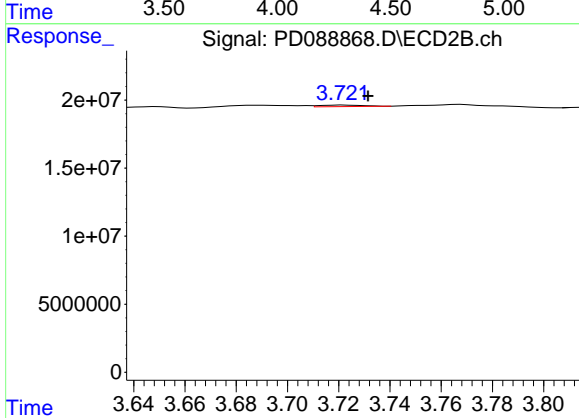
R.T.: 3.403 min  
 Delta R.T.: 0.009 min  
 Response: 795140  
 Conc: 0.03 ng/ml



#3 gamma-BHC (Lindane)

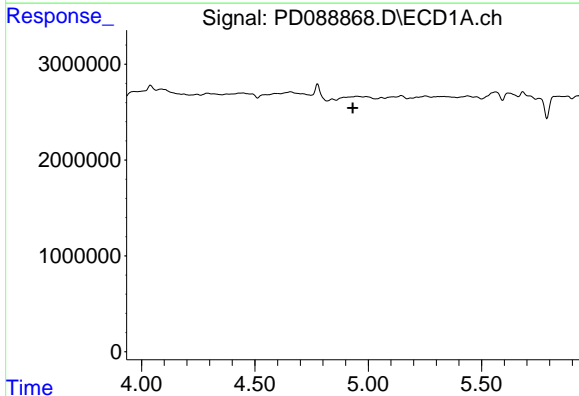
R.T.: 0.000 min  
 Exp R.T.: 4.332 min  
 Response: 0  
 Conc: N.D.

Instrument :  
 ECD\_D  
 ClientSampleId :



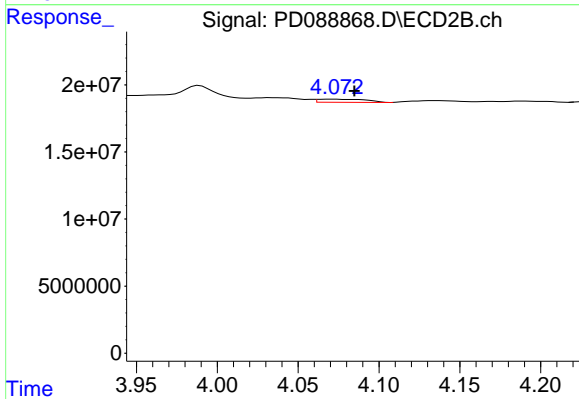
#3 gamma-BHC (Lindane)

R.T.: 3.723 min  
 Delta R.T.: -0.009 min  
 Response: 1303331  
 Conc: 0.06 ng/ml



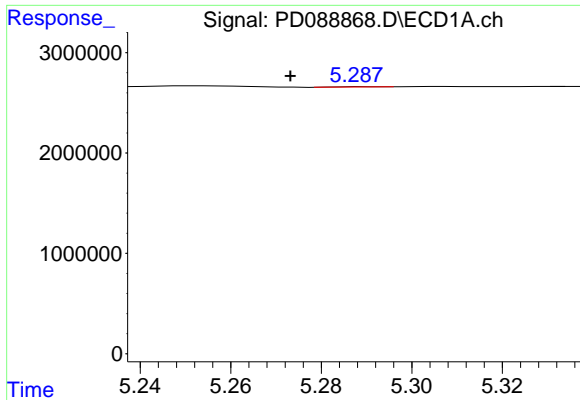
#4 Heptachlor

R.T.: 0.000 min  
 Exp R.T.: 4.932 min  
 Response: 0  
 Conc: N.D.



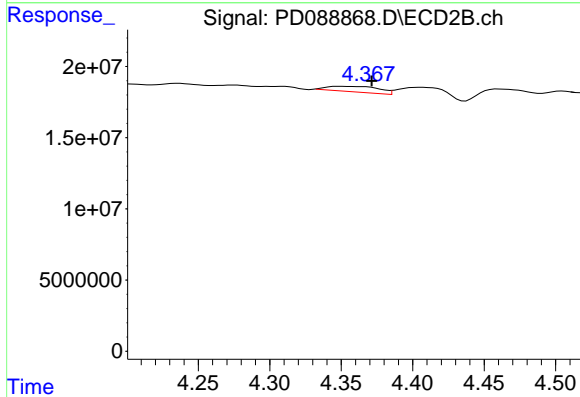
#4 Heptachlor

R.T.: 4.072 min  
 Delta R.T.: -0.013 min  
 Response: 4758361  
 Conc: 0.21 ng/ml

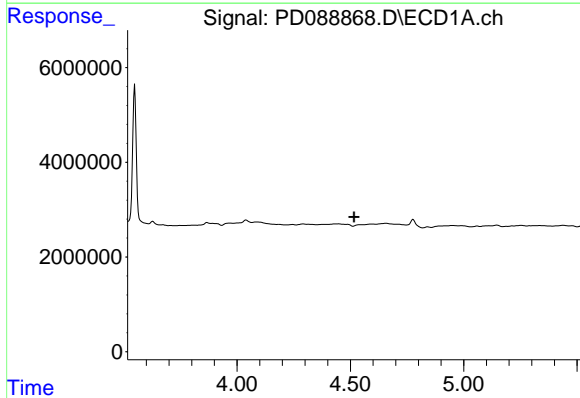


#5 Aldrin  
 R.T.: 5.290 min  
 Delta R.T.: 0.017 min  
 Response: 15547  
 Conc: 0.00 ng/ml

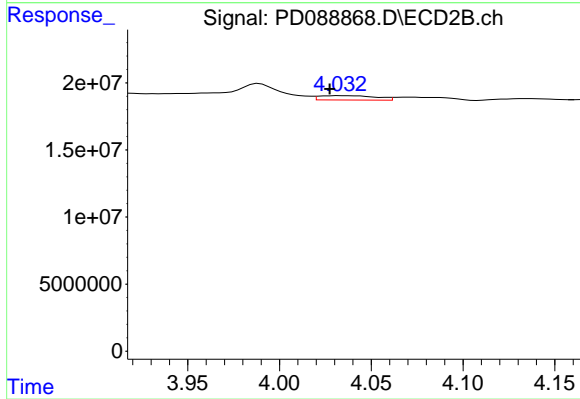
Instrument :  
 ECD\_D  
 ClientSampleId :



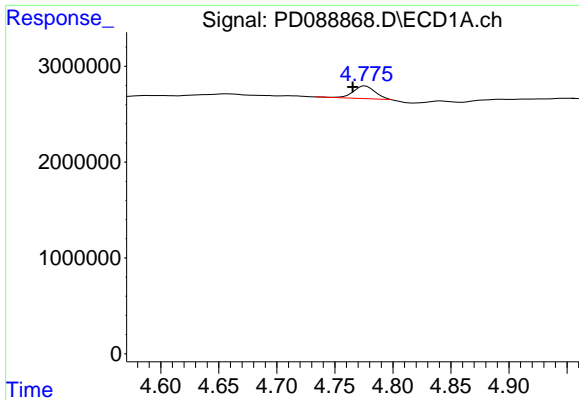
#5 Aldrin  
 R.T.: 4.349 min  
 Delta R.T.: -0.022 min  
 Response: 9726495  
 Conc: 0.44 ng/ml



#6 beta-BHC  
 R.T.: 0.000 min  
 Exp R.T. : 4.517 min  
 Response: 0  
 Conc: N.D.



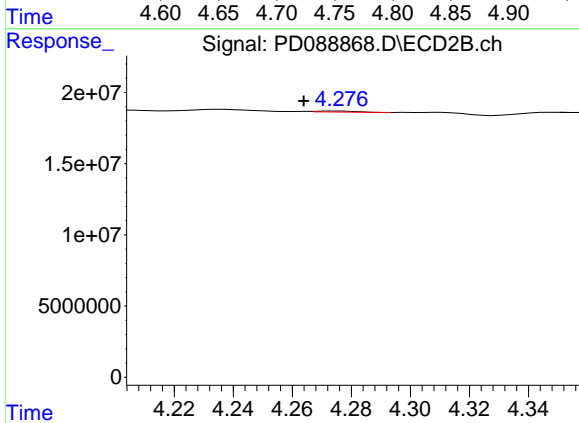
#6 beta-BHC  
 R.T.: 4.033 min  
 Delta R.T.: 0.006 min  
 Response: 6907698  
 Conc: 0.71 ng/ml



#7 delta-BHC

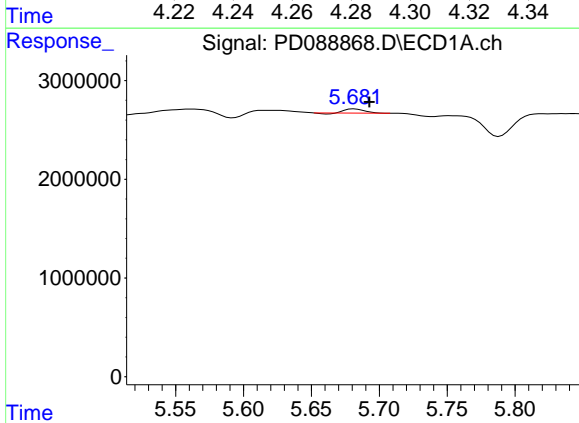
R.T.: 4.776 min  
 Delta R.T.: 0.011 min  
 Response: 1700812  
 Conc: 0.40 ng/ml

Instrument :  
 ECD\_D  
 ClientSampleId :



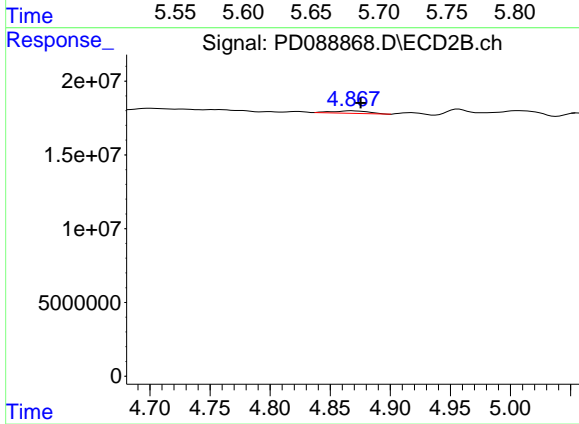
#7 delta-BHC

R.T.: 4.275 min  
 Delta R.T.: 0.012 min  
 Response: 623735  
 Conc: 0.03 ng/ml



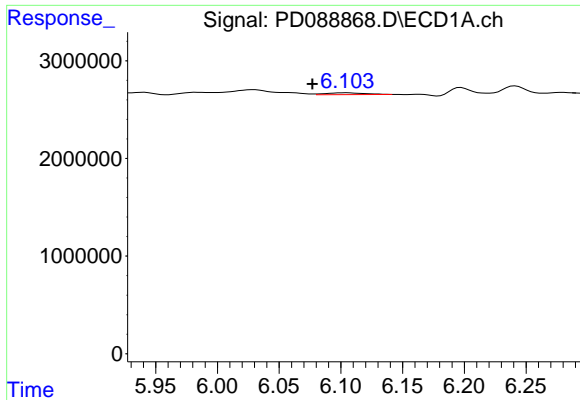
#8 Heptachlor epoxide

R.T.: 5.682 min  
 Delta R.T.: -0.011 min  
 Response: 418255  
 Conc: 0.11 ng/ml



#8 Heptachlor epoxide

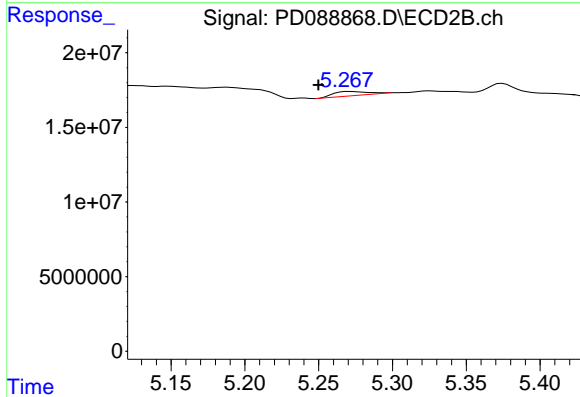
R.T.: 4.868 min  
 Delta R.T.: -0.007 min  
 Response: 3694700  
 Conc: 0.19 ng/ml



#9 Endosulfan I

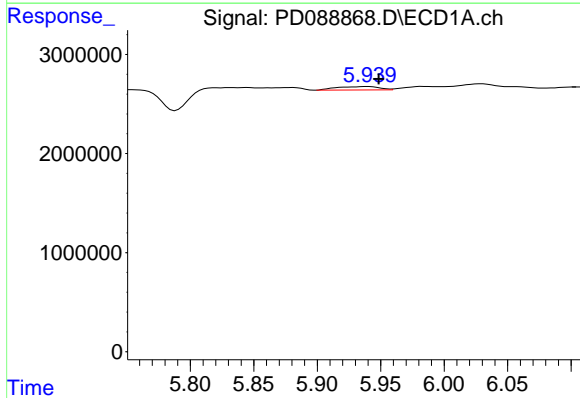
R.T.: 6.104 min  
 Delta R.T.: 0.027 min  
 Response: 403115  
 Conc: 0.11 ng/ml

Instrument :  
 ECD\_D  
 ClientSampleId :



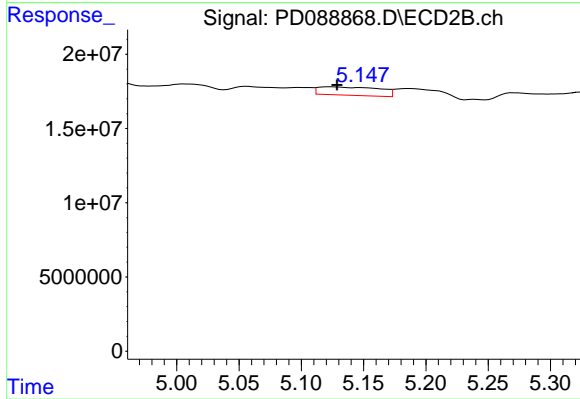
#9 Endosulfan I

R.T.: 5.272 min  
 Delta R.T.: 0.022 min  
 Response: 4604511  
 Conc: 0.24 ng/ml



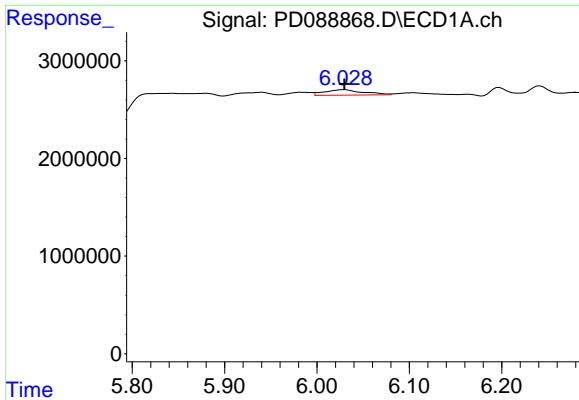
#10 gamma-Chlordane

R.T.: 5.940 min  
 Delta R.T.: -0.008 min  
 Response: 806128  
 Conc: 0.20 ng/ml



#10 gamma-Chlordane

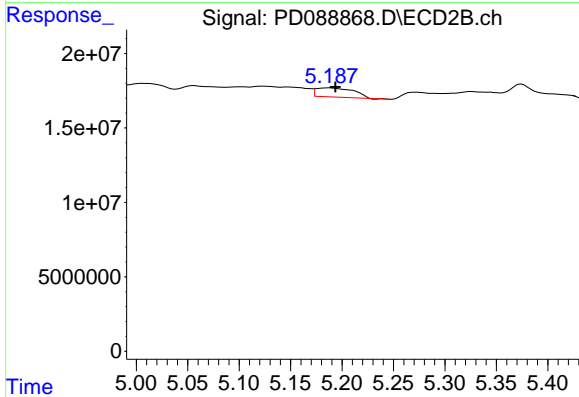
R.T.: 5.124 min  
 Delta R.T.: -0.005 min  
 Response: 19174988  
 Conc: 0.90 ng/ml



#11 alpha-Chlordane

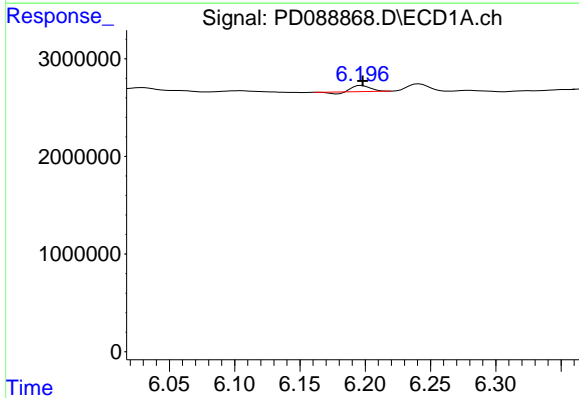
R.T.: 6.029 min  
 Delta R.T.: 0.000 min  
 Response: 1618830  
 Conc: 0.40 ng/ml

Instrument :  
 ECD\_D  
 ClientSampleId :



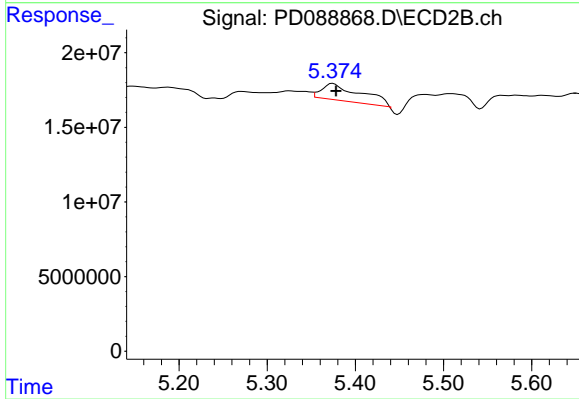
#11 alpha-Chlordane

R.T.: 5.187 min  
 Delta R.T.: -0.006 min  
 Response: 15510298  
 Conc: 0.75 ng/ml



#12 4,4'-DDE

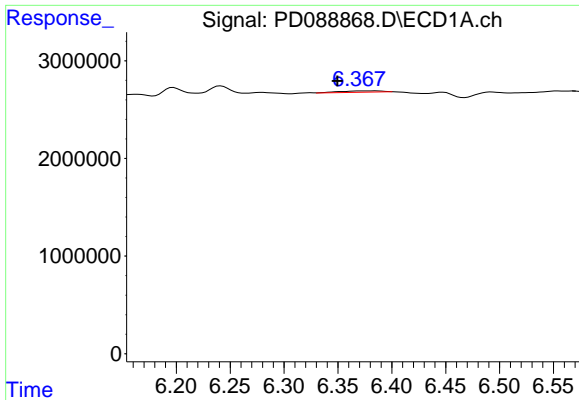
R.T.: 6.197 min  
 Delta R.T.: 0.000 min  
 Response: 498528  
 Conc: 0.14 ng/ml



#12 4,4'-DDE

R.T.: 5.375 min  
 Delta R.T.: -0.004 min  
 Response: 33976547  
 Conc: 1.63 ng/ml



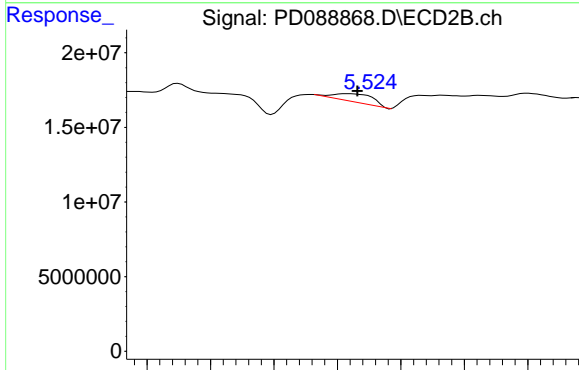


#13 Dieldrin

R.T.: 6.370 min  
 Delta R.T.: 0.021 min  
 Response: 367263  
 Conc: 0.09 ng/ml

Instrument :  
 ECD\_D  
 ClientSampleId :

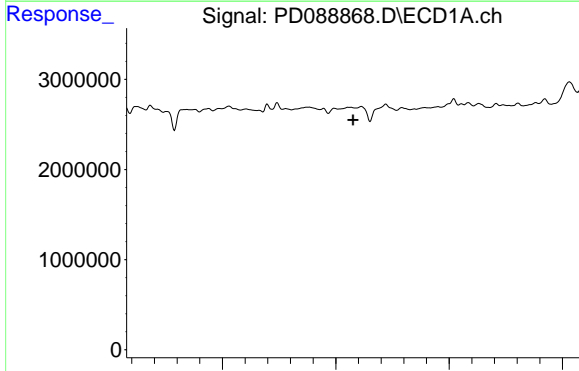
Time 6.20 6.25 6.30 6.35 6.40 6.45 6.50 6.55



#13 Dieldrin

R.T.: 5.508 min  
 Delta R.T.: -0.008 min  
 Response: 11832622  
 Conc: 0.56 ng/ml

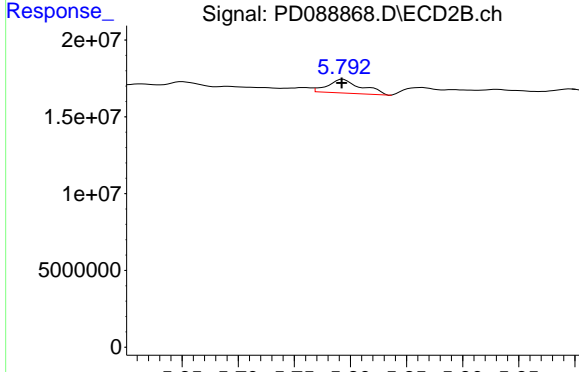
Time 5.35 5.40 5.45 5.50 5.55 5.60 5.65



#14 Endrin

R.T.: 0.000 min  
 Exp R.T. : 6.577 min  
 Response: 0  
 Conc: N.D.

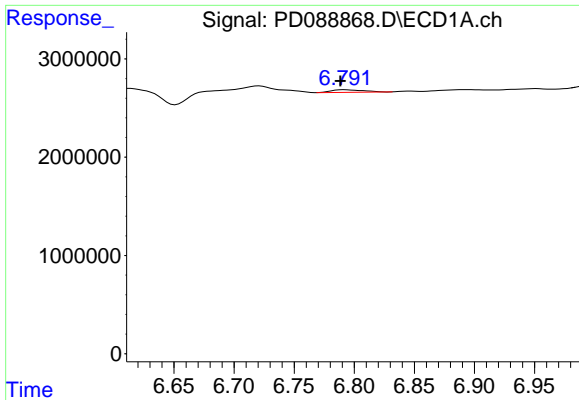
Time 6.00 6.50 7.00



#14 Endrin

R.T.: 5.793 min  
 Delta R.T.: 0.001 min  
 Response: 18739918  
 Conc: 0.97 ng/ml

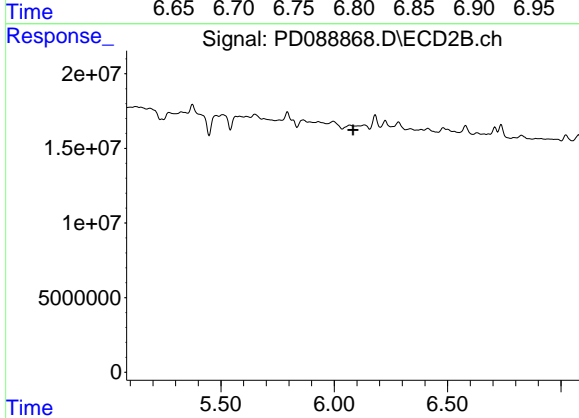
Time 5.65 5.70 5.75 5.80 5.85 5.90 5.95



#15 Endosulfan II

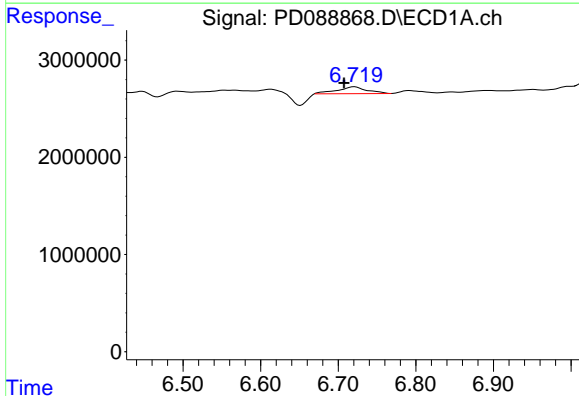
R.T.: 6.792 min  
 Delta R.T.: 0.004 min  
 Response: 496324  
 Conc: 0.14 ng/ml

Instrument :  
 ECD\_D  
 ClientSampleId :



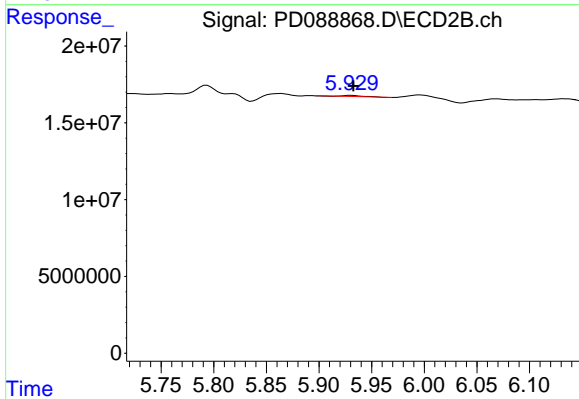
#15 Endosulfan II

R.T.: 6.068 min  
 Delta R.T.: -0.015 min  
 Response: -6747646  
 Conc: N.D.



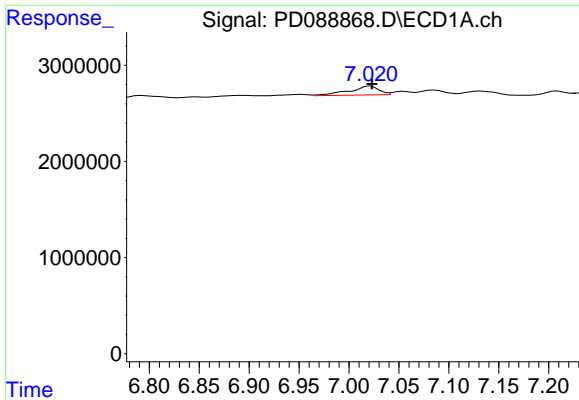
#16 4,4'-DDD

R.T.: 6.721 min  
 Delta R.T.: 0.013 min  
 Response: 1890700  
 Conc: 0.68 ng/ml



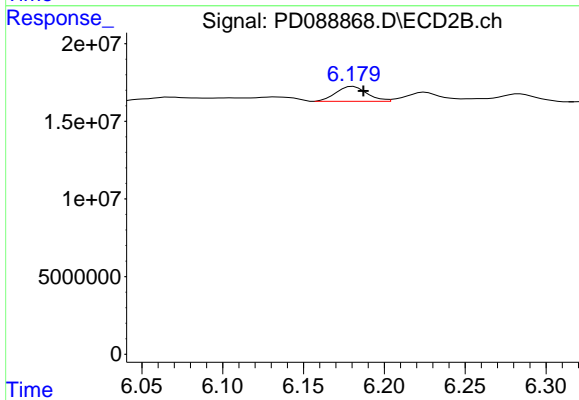
#16 4,4'-DDD

R.T.: 5.931 min  
 Delta R.T.: -0.002 min  
 Response: 922481  
 Conc: 0.05 ng/ml

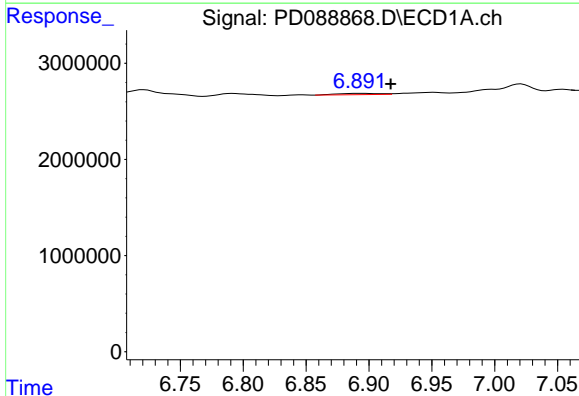


#17 4,4'-DDT  
 R.T.: 7.021 min  
 Delta R.T.: -0.002 min  
 Response: 1899500  
 Conc: 0.61 ng/ml

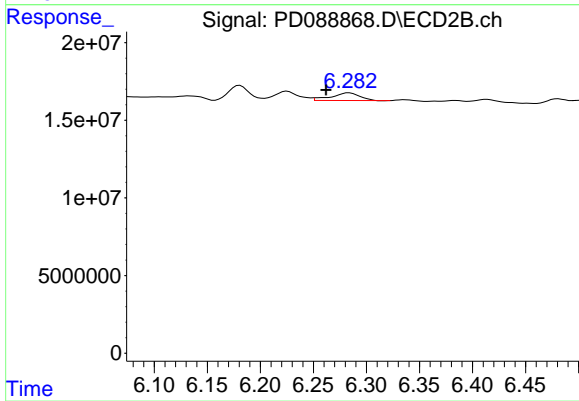
Instrument :  
 ECD\_D  
 ClientSampleId :



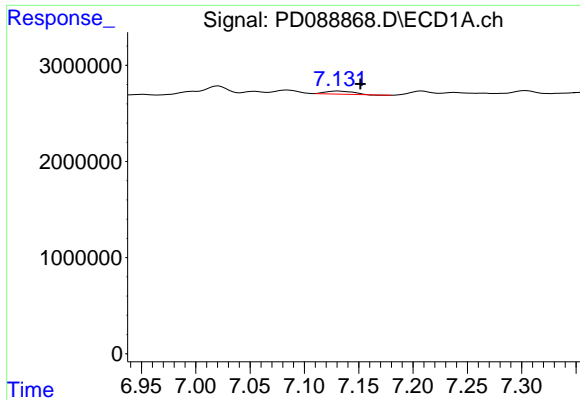
#17 4,4'-DDT  
 R.T.: 6.181 min  
 Delta R.T.: -0.006 min  
 Response: 12865435  
 Conc: 0.71 ng/ml



#18 Endrin aldehyde  
 R.T.: 6.893 min  
 Delta R.T.: -0.025 min  
 Response: 315154  
 Conc: 0.12 ng/ml

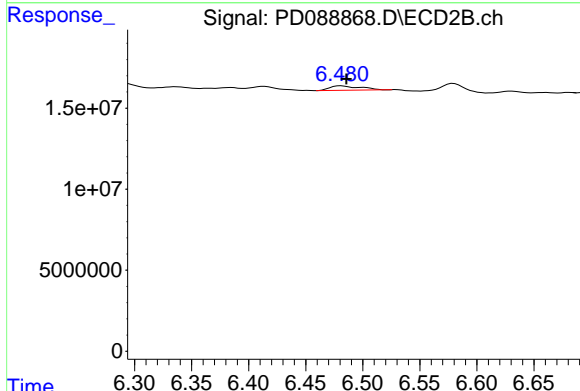


#18 Endrin aldehyde  
 R.T.: 6.284 min  
 Delta R.T.: 0.022 min  
 Response: 8791139  
 Conc: 0.63 ng/ml

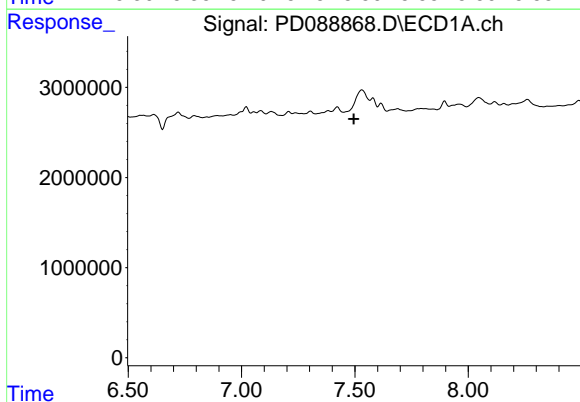


#19 Endosulfan Sulfate  
 R.T.: 7.132 min  
 Delta R.T.: -0.020 min  
 Response: 551304  
 Conc: 0.17 ng/ml

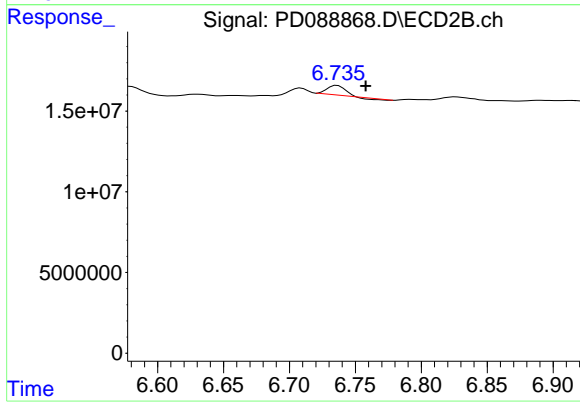
Instrument :  
 ECD\_D  
 ClientSampleId :



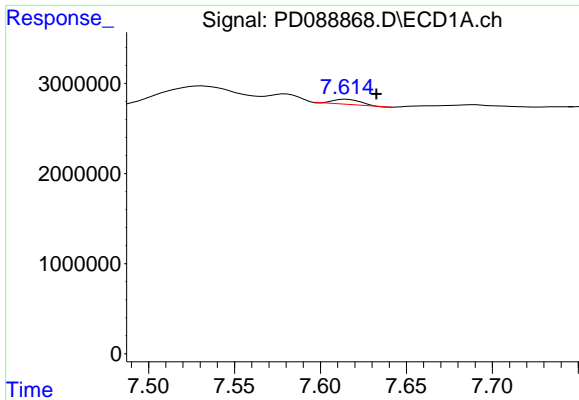
#19 Endosulfan Sulfate  
 R.T.: 6.481 min  
 Delta R.T.: -0.005 min  
 Response: 4972331  
 Conc: 0.28 ng/ml



#20 Methoxychlor  
 R.T.: 0.000 min  
 Exp R.T. : 7.495 min  
 Response: 0  
 Conc: N.D.



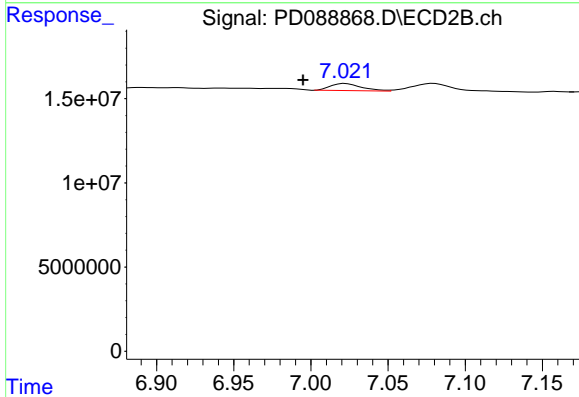
#20 Methoxychlor  
 R.T.: 6.736 min  
 Delta R.T.: -0.022 min  
 Response: 5093454  
 Conc: 0.53 ng/ml



#21 Endrin ketone

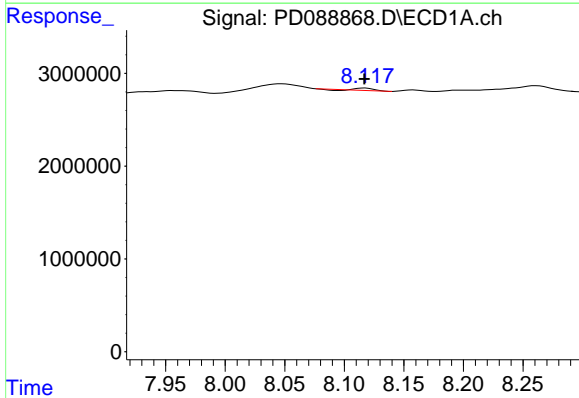
R.T.: 7.615 min  
 Delta R.T.: -0.017 min  
 Response: 621832  
 Conc: 0.18 ng/ml

Instrument :  
 ECD\_D  
 ClientSampleId :



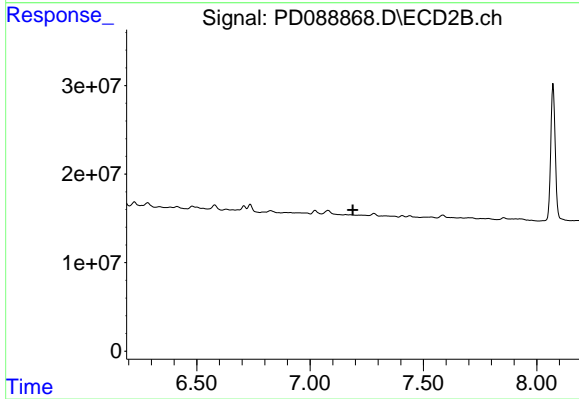
#21 Endrin ketone

R.T.: 7.022 min  
 Delta R.T.: 0.027 min  
 Response: 5842014  
 Conc: 0.30 ng/ml



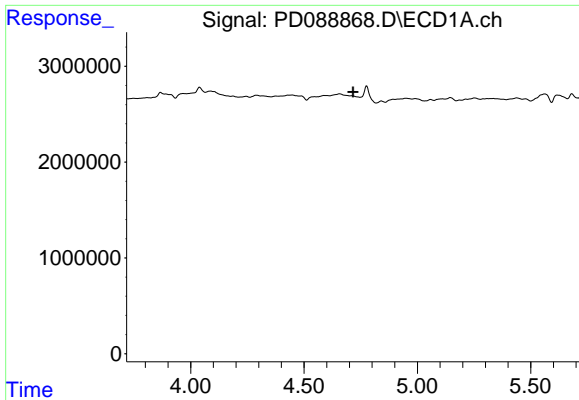
#22 Mirex

R.T.: 8.117 min  
 Delta R.T.: 0.000 min  
 Response: 205411  
 Conc: 0.08 ng/ml



#22 Mirex

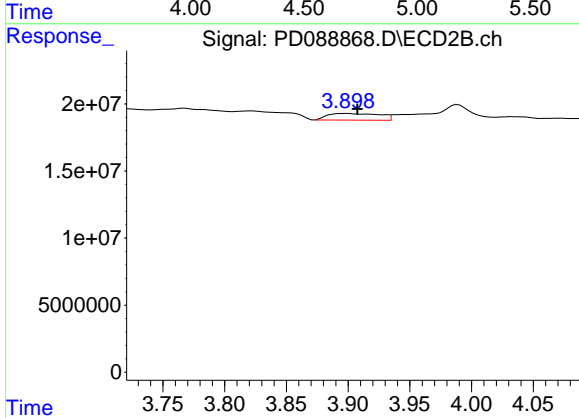
R.T.: 0.000 min  
 Exp R.T. : 7.189 min  
 Response: 0  
 Conc: N.D.



#23 Chlordane-1

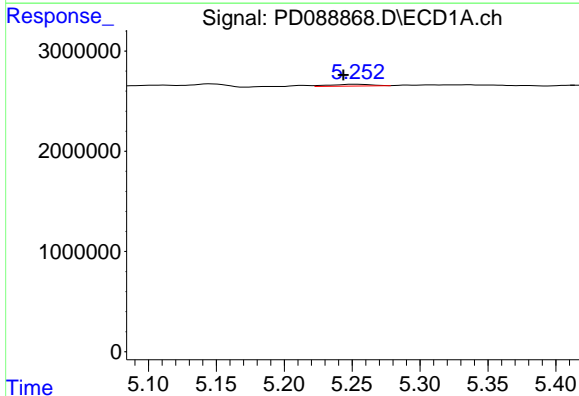
R.T.: 0.000 min  
 Exp R.T.: 4.717 min  
 Response: 0  
 Conc: N.D.

Instrument :  
 ECD\_D  
 ClientSampleId :



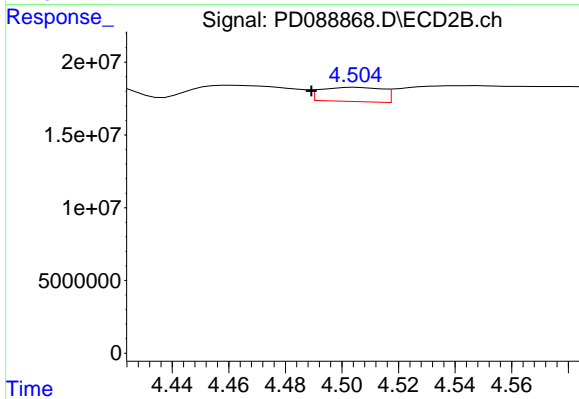
#23 Chlordane-1

R.T.: 3.899 min  
 Delta R.T.: -0.008 min  
 Response: 14528567  
 Conc: 17.58 ng/ml



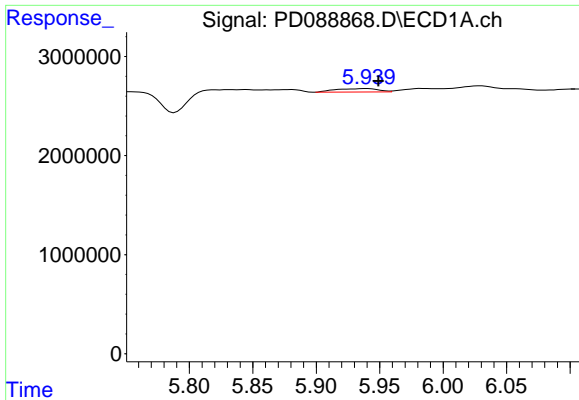
#24 Chlordane-2

R.T.: 5.253 min  
 Delta R.T.: 0.009 min  
 Response: 376781  
 Conc: 2.05 ng/ml



#24 Chlordane-2

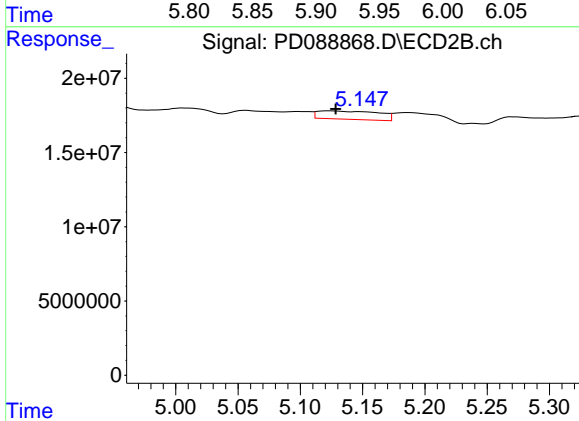
R.T.: 4.505 min  
 Delta R.T.: 0.016 min  
 Response: 14684543  
 Conc: 17.40 ng/ml



#25 Chlordane-3

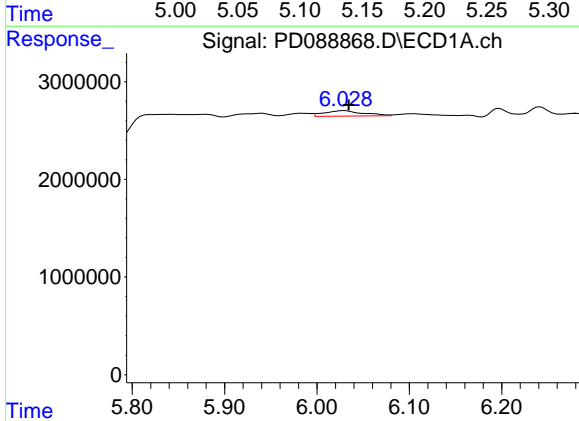
R.T.: 5.940 min  
 Delta R.T.: -0.009 min  
 Response: 806128  
 Conc: 1.09 ng/ml

Instrument :  
 ECD\_D  
 ClientSampleId :



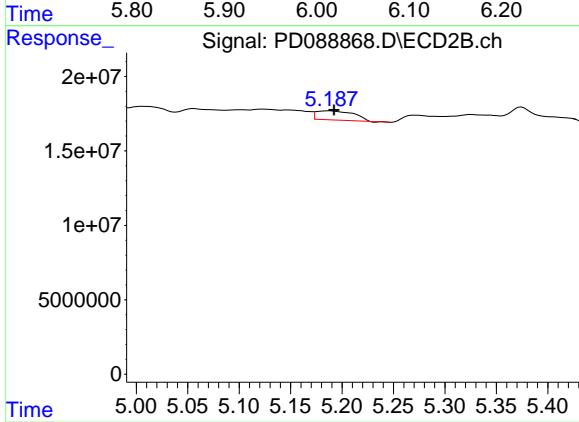
#25 Chlordane-3

R.T.: 5.124 min  
 Delta R.T.: -0.004 min  
 Response: 19174988  
 Conc: 7.27 ng/ml



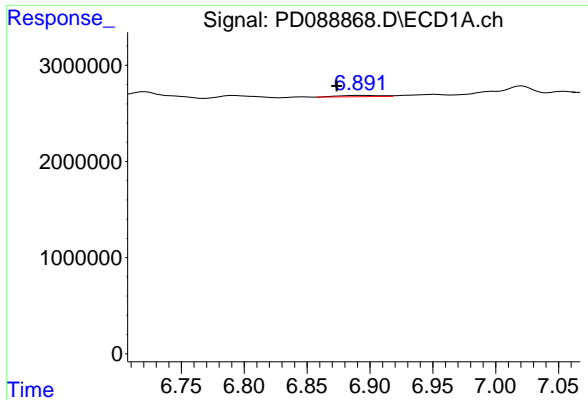
#26 Chlordane-4

R.T.: 6.029 min  
 Delta R.T.: -0.005 min  
 Response: 1618830  
 Conc: 1.81 ng/ml



#26 Chlordane-4

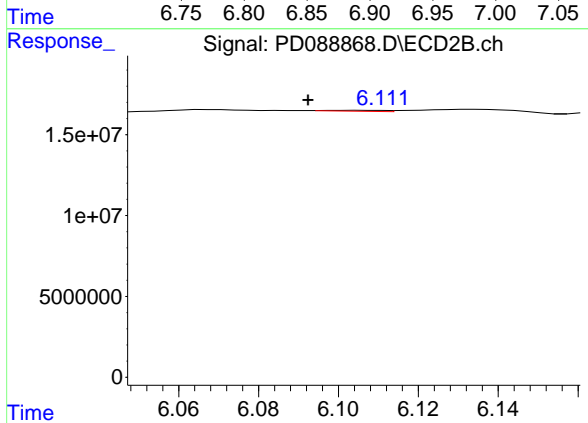
R.T.: 5.187 min  
 Delta R.T.: -0.005 min  
 Response: 15510298  
 Conc: 7.01 ng/ml



#27 Chlordane-5

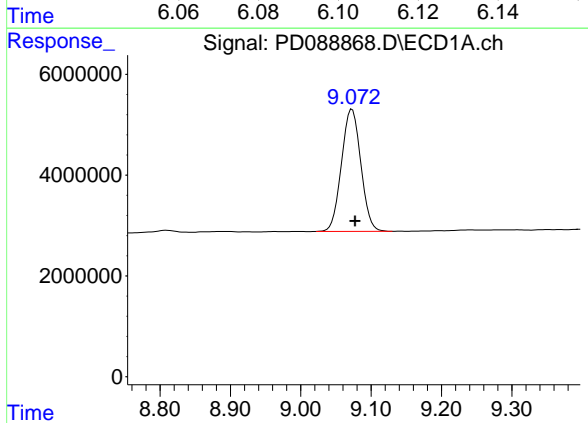
R.T.: 6.893 min  
 Delta R.T.: 0.019 min  
 Response: 315154  
 Conc: 2.07 ng/ml

Instrument :  
 ECD\_D  
 ClientSampleId :



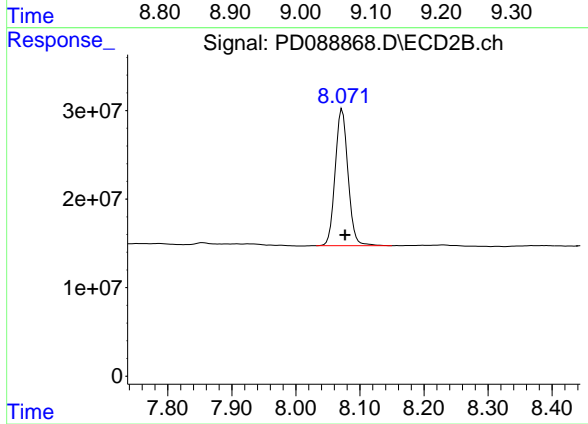
#27 Chlordane-5

R.T.: 6.106 min  
 Delta R.T.: 0.014 min  
 Response: 585867  
 Conc: 0.59 ng/ml



#28 Decachlorobiphenyl

R.T.: 9.073 min  
 Delta R.T.: -0.004 min  
 Response: 46401323  
 Conc: 13.56 ng/ml



#28 Decachlorobiphenyl

R.T.: 8.072 min  
 Delta R.T.: -0.004 min  
 Response: 214754175  
 Conc: 11.76 ng/ml