

Data Path : Z:\pestpcbsrv\HPCHEM1\ECD_D\Data\PD061025\
 Data File : PD088871.D
 Signal(s) : Signal #1: ECD1A.ch Signal #2: ECD2B.ch
 Acq On : 10 Jun 2025 15:57
 Operator : AR\AJ
 Sample : PB168320BS
 Misc :
 ALS Vial : 20 Sample Multiplier: 1

Instrument :
 ECD_D
 ClientSampleId :
 PB168320BS

Integration File signal 1: autoint1.e
 Integration File signal 2: autoint2.e
 Quant Time: Jun 11 07:40:29 2025
 Quant Method : Z:\pestpcbsrv\HPCHEM1\ECD_D\Method\PD051925.M
 Quant Title : GC Extractables
 QLast Update : Mon May 19 15:27:28 2025
 Response via : Initial Calibration
 Integrator: ChemStation

Volume Inj. : 1 µl
 Signal #1 Phase : ZB-MR1 Signal #2 Phase: ZB-MR2
 Signal #1 Info : 30M x 0.32mm x0.5 Signal #2 Info : 30M x 0.32mm x 0.25µm

	Compound	RT#1	RT#2	Resp#1	Resp#2	ng/ml	ng/ml

System Monitoring Compounds							
1)	SA Tetrachlo...	3.548	2.880	47092466	311.8E6	21.764	20.612
28)	SA Decachlor...	9.072	8.072	74310180	368.6E6	21.713	20.191
Target Compounds							
2)	A alpha-BHC	3.998	3.392	251.5E6	1183.5E6	52.650	49.511
3)	MA gamma-BHC...	4.329	3.729	240.3E6	1098.2E6	52.204	49.544
4)	MA Heptachlor	4.928	4.082	231.9E6	1082.3E6	51.864	48.200
5)	MB Aldrin	5.270	4.368	231.0E6	1090.8E6	52.559	49.743
6)	B beta-BHC	4.514	4.025	93067111	475.6E6	51.613	48.822
7)	B delta-BHC	4.762	4.262	236.1E6	1107.5E6	55.868	49.675
8)	Heptachlo...	5.690	4.873	206.9E6	974.3E6	52.134	49.032
9)	A Endosulfan I	6.074	5.247	194.2E6	925.0E6	51.608	48.737
10)	B gamma-Chl...	5.945	5.126	204.6E6	1057.5E6	51.303	49.575
11)	B alpha-Chl...	6.026	5.190	207.5E6	1011.0E6	51.802	49.018
12)	B 4,4'-DDE	6.195	5.376	187.6E6	1028.7E6	52.265	49.213
13)	MA Dieldrin	6.346	5.513	207.3E6	1026.7E6	51.677	48.790
14)	MA Endrin	6.574	5.789	174.5E6	924.3E6	51.084	47.933
15)	B Endosulfa...	6.785	6.081	174.5E6	883.0E6	50.672	48.192
16)	A 4,4'-DDD	6.704	5.930	150.4E6	861.8E6	53.986	49.548
17)	MA 4,4'-DDT	7.020	6.184	157.3E6	847.4E6	50.385	46.720
18)	B Endrin al...	6.914	6.259	128.2E6	650.0E6	49.776	46.666
19)	B Endosulfa...	7.148	6.482	162.4E6	850.9E6	50.696	47.921
20)	A Methoxychlor	7.492	6.754	80638334	439.7E6	48.270	45.920
21)	B Endrin ke...	7.630	6.991	175.5E6	927.1E6	51.272	47.919
22)	Mirex	8.113	7.186	126.2E6	696.8E6	48.558	45.838
23)	Chlordane-1	0.000	3.945f	0	758492	N.D.	0.918 #
24)	Chlordane-2	5.270f	4.506	231.0E6	21597699	1258.651	25.590 #
25)	Chlordane-3	5.945	5.126	204.6E6	1057.5E6	276.581	401.066 #
26)	Chlordane-4	6.026	5.190	207.5E6	1011.0E6	231.572	456.945 #
27)	Chlordane-5	0.000	6.081	0	883.0E6	N.D.	882.211 #

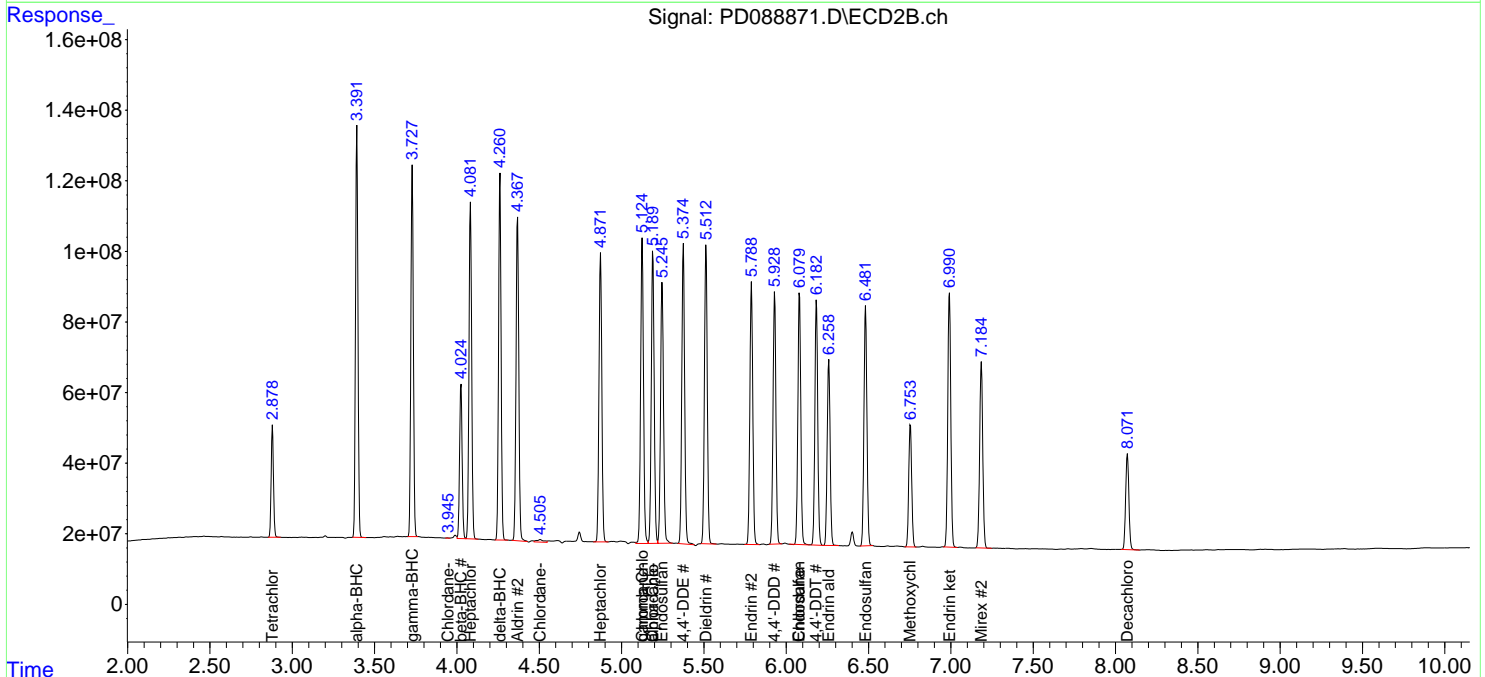
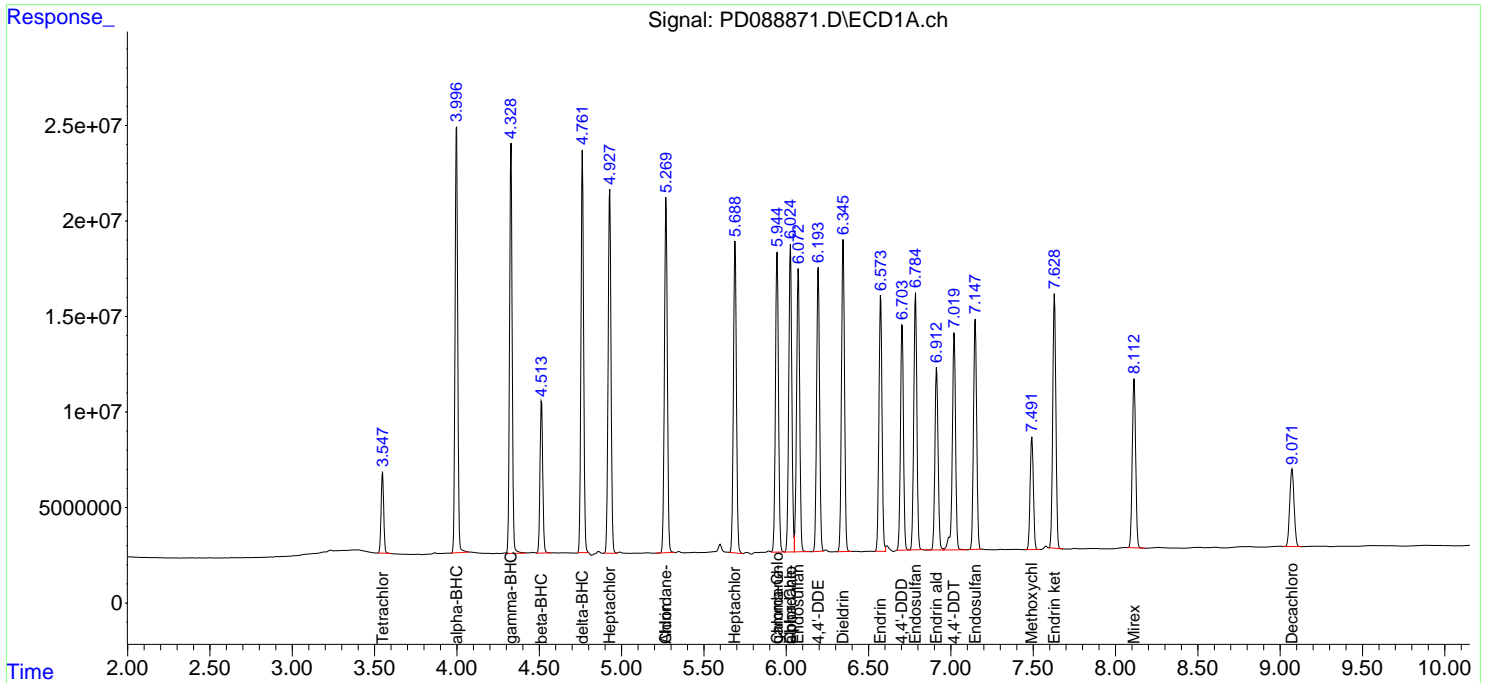
(f)=RT Delta > 1/2 Window (#)=Amounts differ by > 25% (m)=manual int.

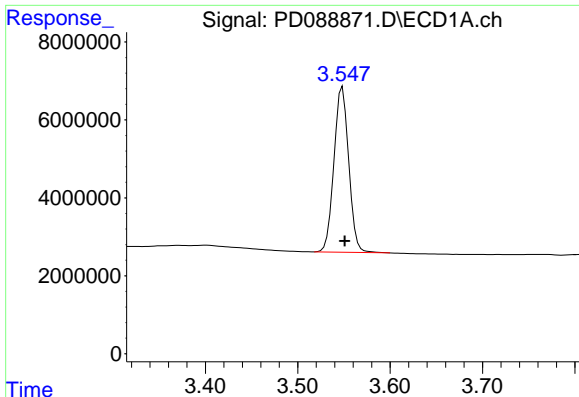
Data Path : Z:\pestpcbsrv\HPCHEM1\ECD_D\Data\PD061025\
 Data File : PD088871.D
 Signal(s) : Signal #1: ECD1A.ch Signal #2: ECD2B.ch
 Acq On : 10 Jun 2025 15:57
 Operator : AR\AJ
 Sample : PB168320BS
 Misc :
 ALS Vial : 20 Sample Multiplier: 1

Instrument :
 ECD_D
ClientSampleId :
 PB168320BS

Integration File signal 1: autoint1.e
 Integration File signal 2: autoint2.e
 Quant Time: Jun 11 07:40:29 2025
 Quant Method : Z:\pestpcbsrv\HPCHEM1\ECD_D\Method\PD051925.M
 Quant Title : GC Extractables
 QLast Update : Mon May 19 15:27:28 2025
 Response via : Initial Calibration
 Integrator: ChemStation

Volume Inj. : 1 µl
 Signal #1 Phase : ZB-MR1 Signal #2 Phase: ZB-MR2
 Signal #1 Info : 30M x 0.32mm x0.5 Signal #2 Info : 30M x 0.32mm x 0.25µm

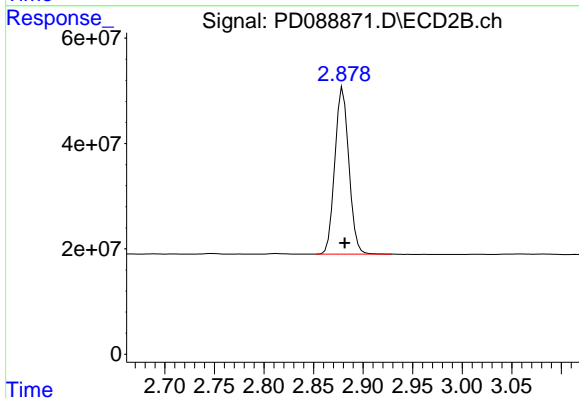




#1 Tetrachloro-m-xylene

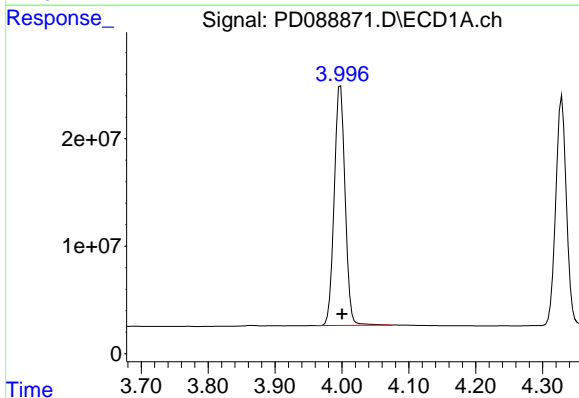
R.T.: 3.548 min
 Delta R.T.: -0.003 min
 Response: 47092466
 Conc: 21.76 ng/ml

Instrument :
 ECD_D
 ClientSampleId :
 PB168320BS



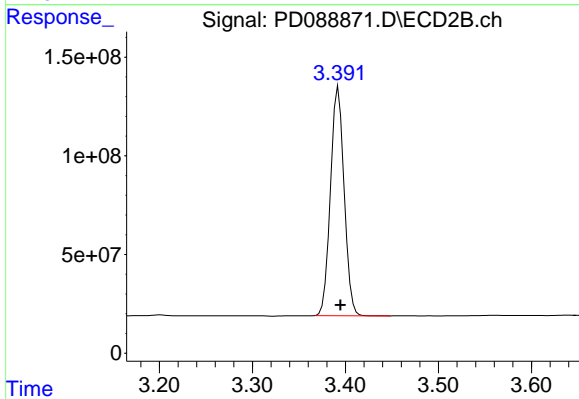
#1 Tetrachloro-m-xylene

R.T.: 2.880 min
 Delta R.T.: -0.002 min
 Response: 311799142
 Conc: 20.61 ng/ml



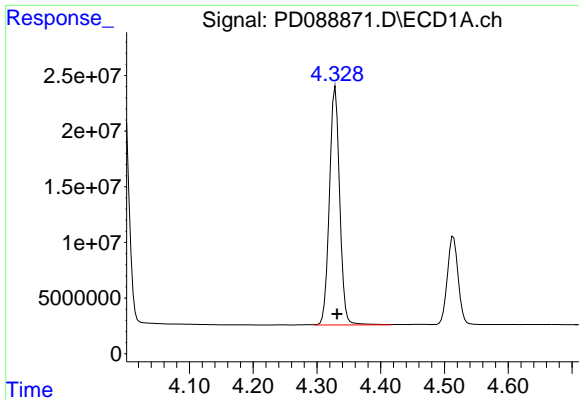
#2 alpha-BHC

R.T.: 3.998 min
 Delta R.T.: -0.003 min
 Response: 251486721
 Conc: 52.65 ng/ml



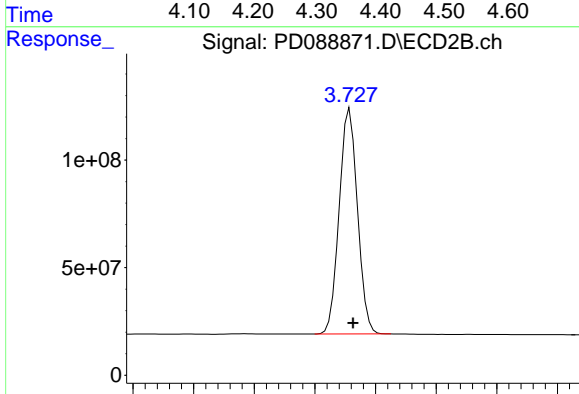
#2 alpha-BHC

R.T.: 3.392 min
 Delta R.T.: -0.002 min
 Response: 1183498193
 Conc: 49.51 ng/ml

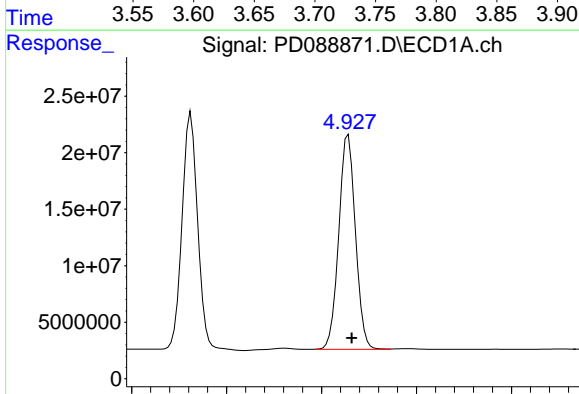


#3 gamma-BHC (Lindane)
 R.T.: 4.329 min
 Delta R.T.: -0.003 min
 Response: 240280836
 Conc: 52.20 ng/ml

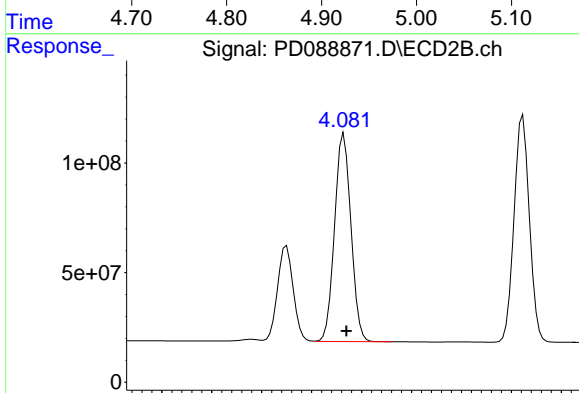
Instrument :
 ECD_D
 ClientSampleId :
 PB168320BS



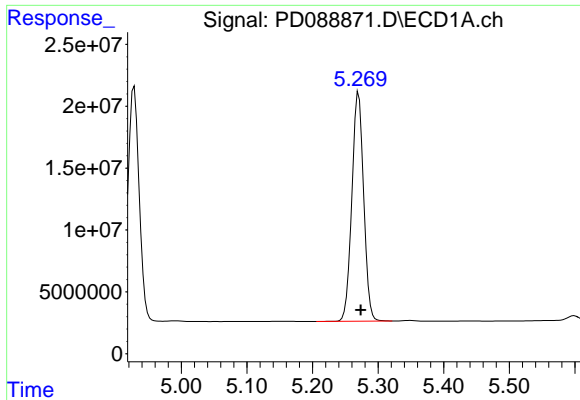
#3 gamma-BHC (Lindane)
 R.T.: 3.729 min
 Delta R.T.: -0.003 min
 Response: 1098179287
 Conc: 49.54 ng/ml



#4 Heptachlor
 R.T.: 4.928 min
 Delta R.T.: -0.003 min
 Response: 231893408
 Conc: 51.86 ng/ml

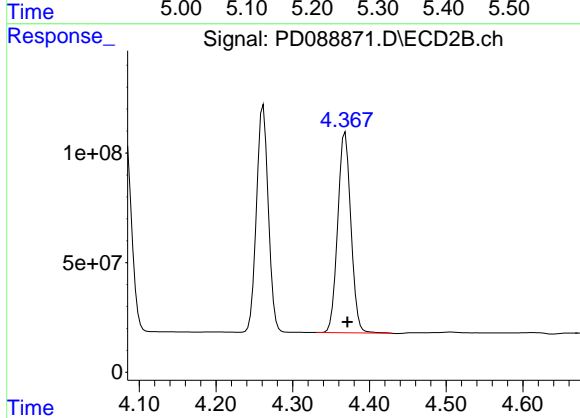


#4 Heptachlor
 R.T.: 4.082 min
 Delta R.T.: -0.002 min
 Response: 1082335893
 Conc: 48.20 ng/ml

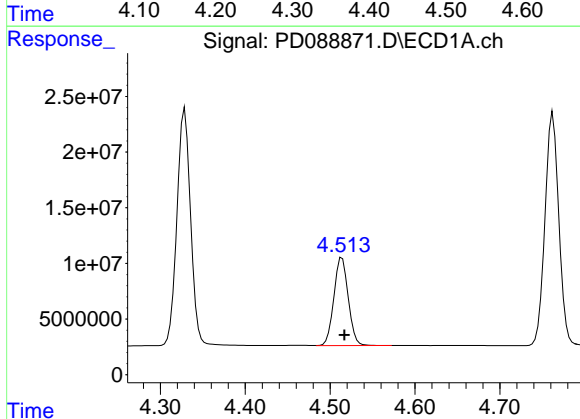


#5 Aldrin
 R.T.: 5.270 min
 Delta R.T.: -0.003 min
 Response: 230969216
 Conc: 52.56 ng/ml

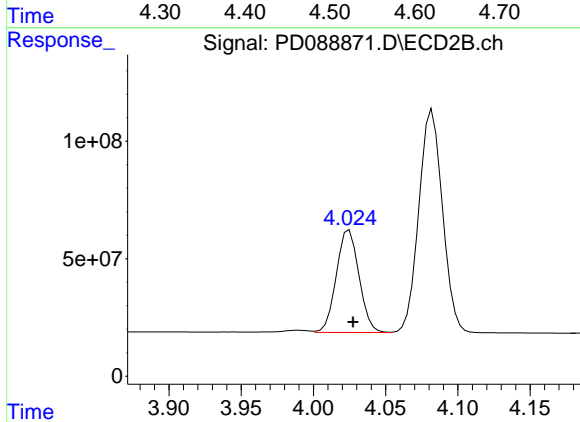
Instrument :
 ECD_D
 ClientSampleId :
 PB168320BS



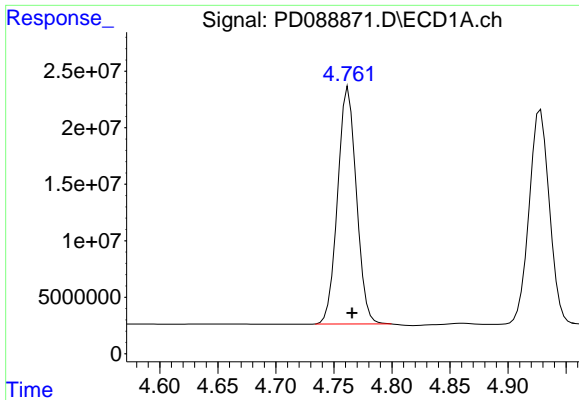
#5 Aldrin
 R.T.: 4.368 min
 Delta R.T.: -0.003 min
 Response: 1090846637
 Conc: 49.74 ng/ml



#6 beta-BHC
 R.T.: 4.514 min
 Delta R.T.: -0.003 min
 Response: 93067111
 Conc: 51.61 ng/ml



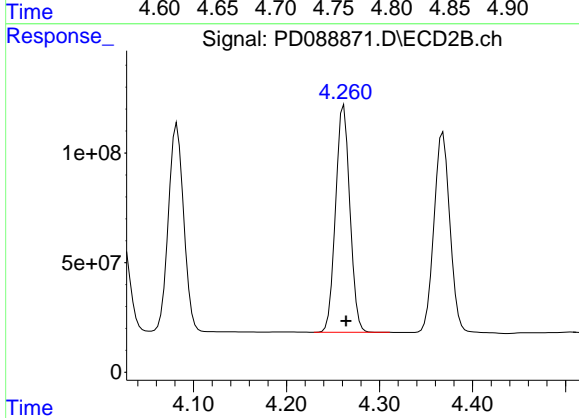
#6 beta-BHC
 R.T.: 4.025 min
 Delta R.T.: -0.002 min
 Response: 475617584
 Conc: 48.82 ng/ml



#7 delta-BHC

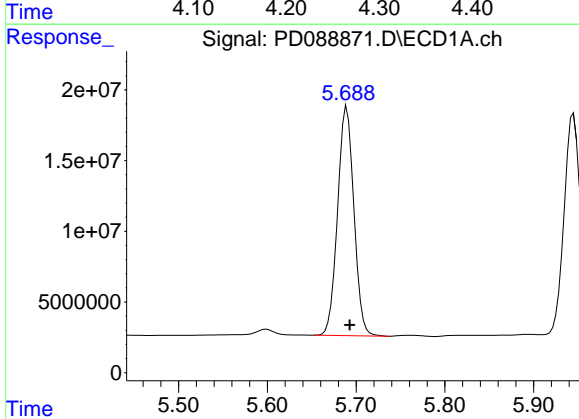
R.T.: 4.762 min
 Delta R.T.: -0.003 min
 Response: 236108081
 Conc: 55.87 ng/ml

Instrument :
 ECD_D
 ClientSampleId :
 PB168320BS



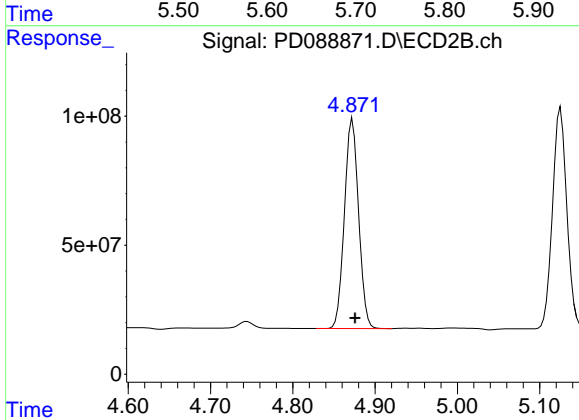
#7 delta-BHC

R.T.: 4.262 min
 Delta R.T.: -0.002 min
 Response: 1107456405
 Conc: 49.67 ng/ml



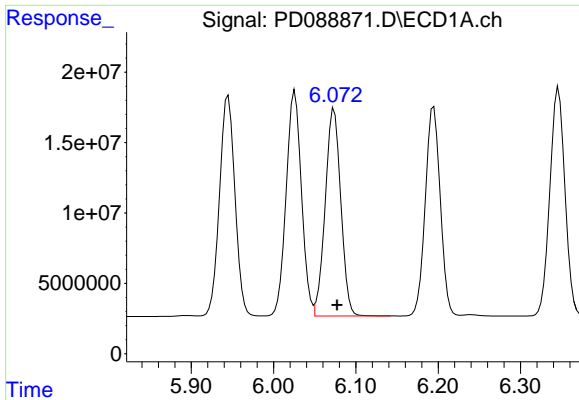
#8 Heptachlor epoxide

R.T.: 5.690 min
 Delta R.T.: -0.003 min
 Response: 206935456
 Conc: 52.13 ng/ml



#8 Heptachlor epoxide

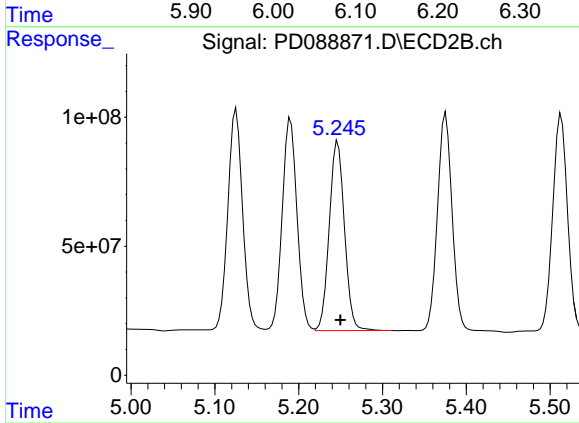
R.T.: 4.873 min
 Delta R.T.: -0.003 min
 Response: 974324671
 Conc: 49.03 ng/ml



#9 Endosulfan I

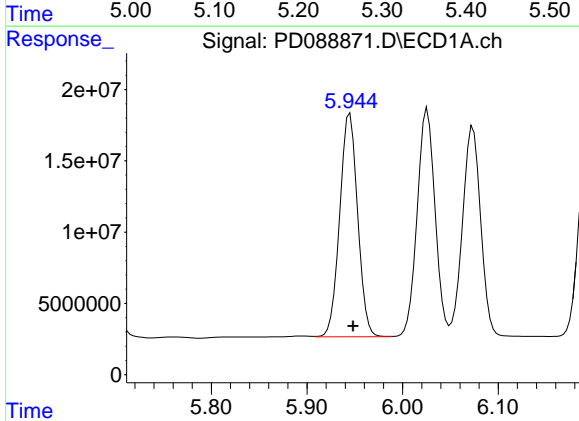
R.T.: 6.074 min
 Delta R.T.: -0.003 min
 Response: 194197355
 Conc: 51.61 ng/ml

Instrument :
 ECD_D
 ClientSampleId :
 PB168320BS



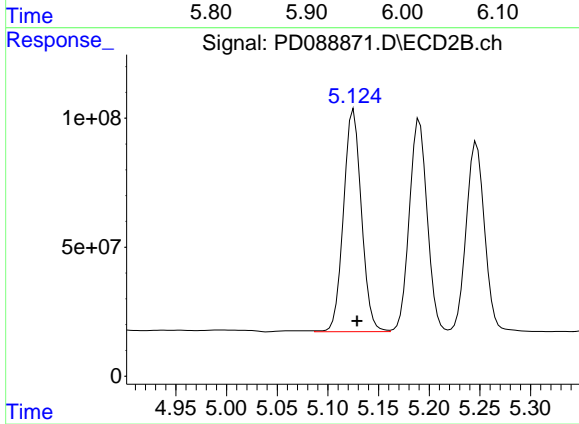
#9 Endosulfan I

R.T.: 5.247 min
 Delta R.T.: -0.003 min
 Response: 924954764
 Conc: 48.74 ng/ml



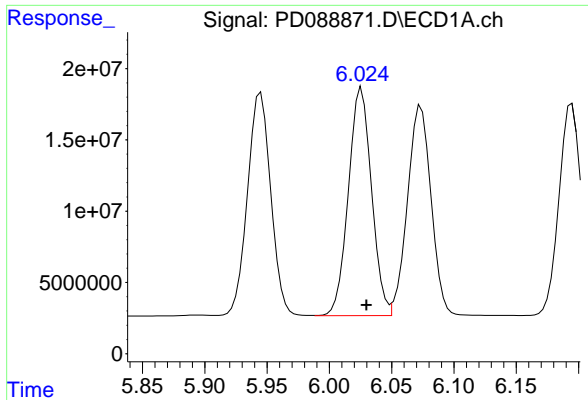
#10 gamma-Chlordane

R.T.: 5.945 min
 Delta R.T.: -0.003 min
 Response: 204643214
 Conc: 51.30 ng/ml



#10 gamma-Chlordane

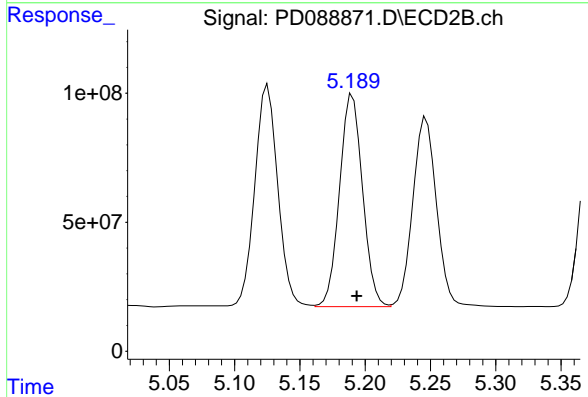
R.T.: 5.126 min
 Delta R.T.: -0.003 min
 Response: 1057543787
 Conc: 49.58 ng/ml



#11 alpha-Chlordane

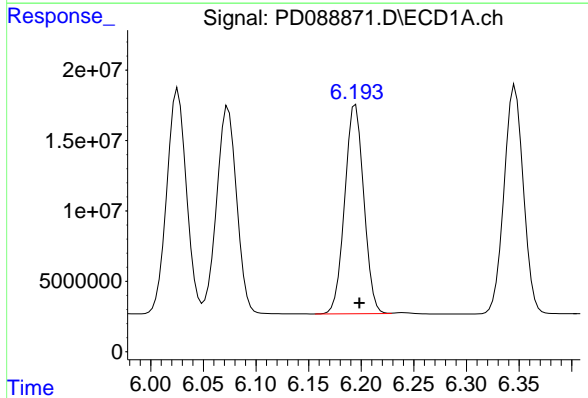
R.T.: 6.026 min
 Delta R.T.: -0.004 min
 Response: 207531049
 Conc: 51.80 ng/ml

Instrument :
 ECD_D
 ClientSampleId :
 PB168320BS



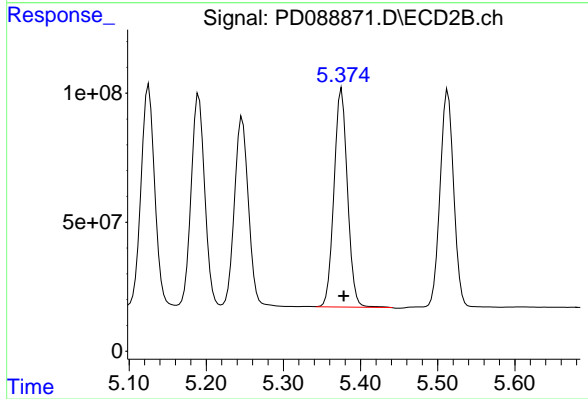
#11 alpha-Chlordane

R.T.: 5.190 min
 Delta R.T.: -0.003 min
 Response: 1010987057
 Conc: 49.02 ng/ml



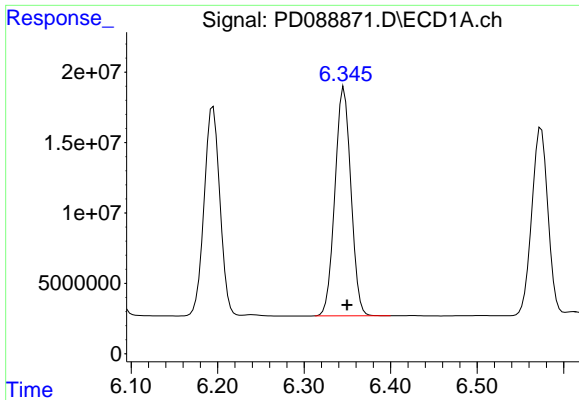
#12 4,4'-DDE

R.T.: 6.195 min
 Delta R.T.: -0.003 min
 Response: 187597698
 Conc: 52.26 ng/ml



#12 4,4'-DDE

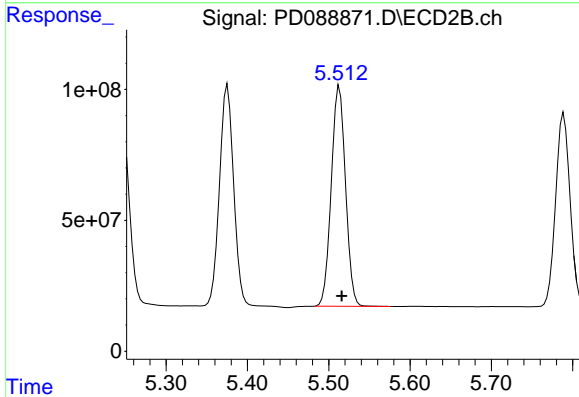
R.T.: 5.376 min
 Delta R.T.: -0.003 min
 Response: 1028676332
 Conc: 49.21 ng/ml



#13 Dieldrin

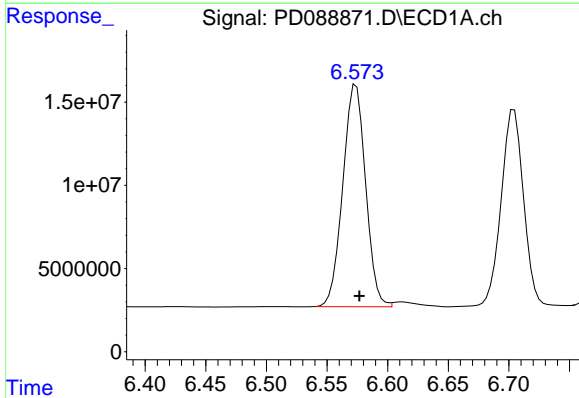
R.T.: 6.346 min
Delta R.T.: -0.003 min
Response: 207313131
Conc: 51.68 ng/ml

Instrument :
ECD_D
ClientSampleId :
PB168320BS



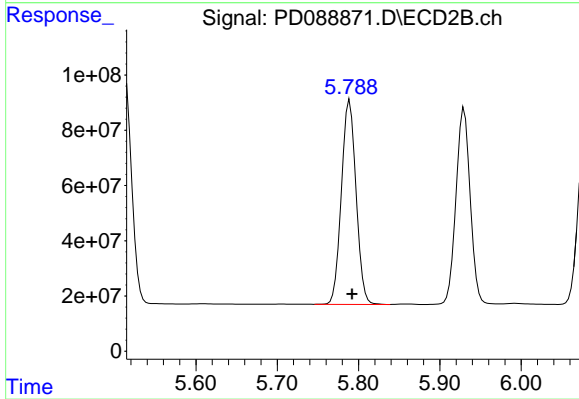
#13 Dieldrin

R.T.: 5.513 min
Delta R.T.: -0.003 min
Response: 1026736190
Conc: 48.79 ng/ml



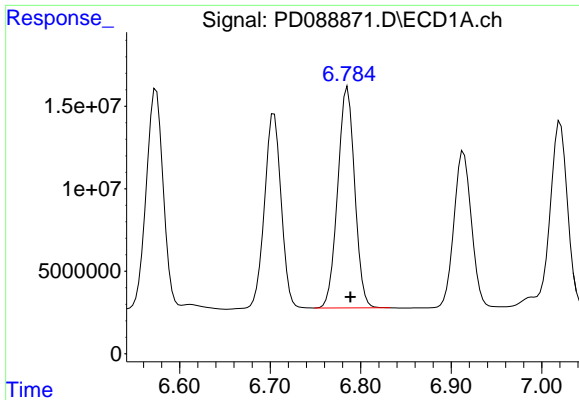
#14 Endrin

R.T.: 6.574 min
Delta R.T.: -0.003 min
Response: 174461060
Conc: 51.08 ng/ml



#14 Endrin

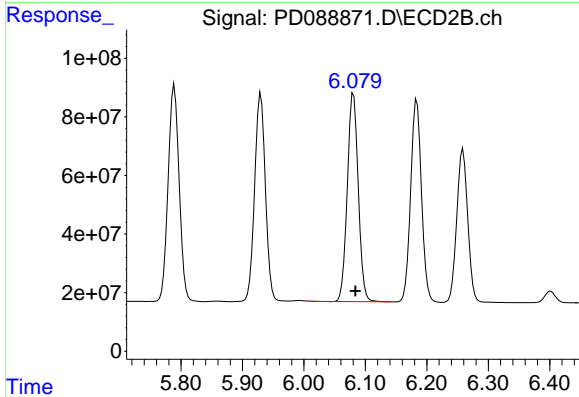
R.T.: 5.789 min
Delta R.T.: -0.003 min
Response: 924337995
Conc: 47.93 ng/ml



#15 Endosulfan II

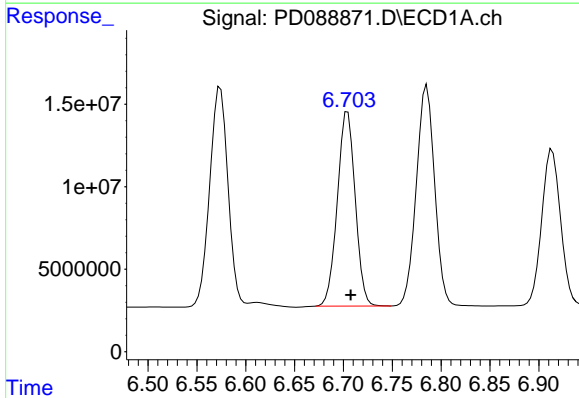
R.T.: 6.785 min
 Delta R.T.: -0.003 min
 Response: 174494219
 Conc: 50.67 ng/ml

Instrument :
 ECD_D
 ClientSampleId :
 PB168320BS



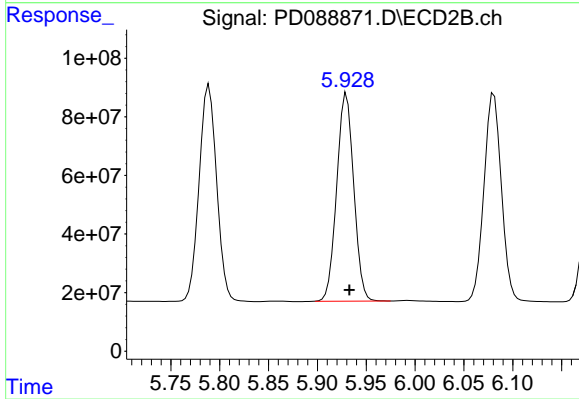
#15 Endosulfan II

R.T.: 6.081 min
 Delta R.T.: -0.003 min
 Response: 882964386
 Conc: 48.19 ng/ml



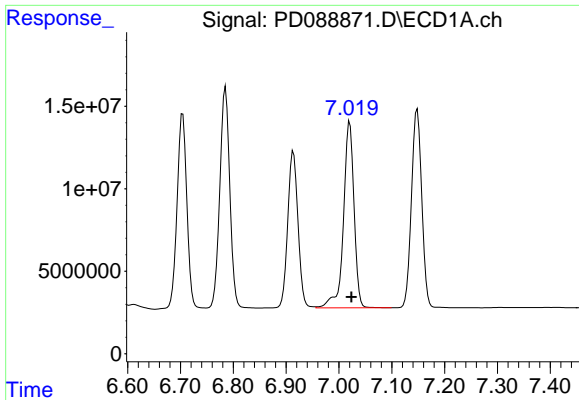
#16 4,4'-DDD

R.T.: 6.704 min
 Delta R.T.: -0.003 min
 Response: 150356324
 Conc: 53.99 ng/ml



#16 4,4'-DDD

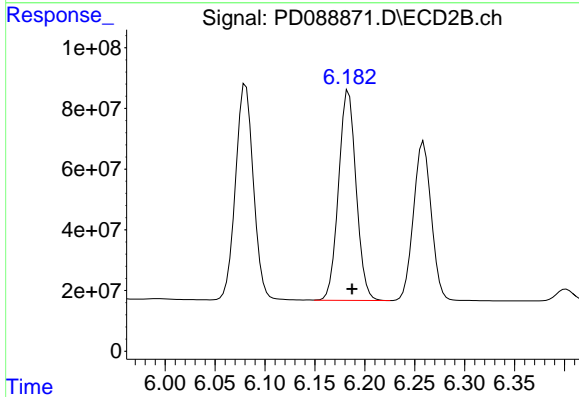
R.T.: 5.930 min
 Delta R.T.: -0.003 min
 Response: 861758381
 Conc: 49.55 ng/ml



#17 4,4'-DDT

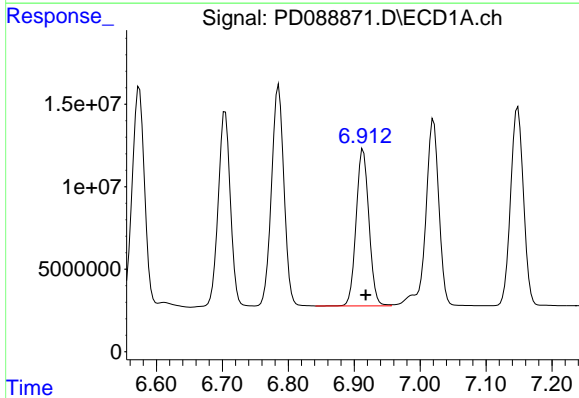
R.T.: 7.020 min
 Delta R.T.: -0.003 min
 Response: 157304585
 Conc: 50.39 ng/ml

Instrument :
 ECD_D
 ClientSampleId :
 PB168320BS



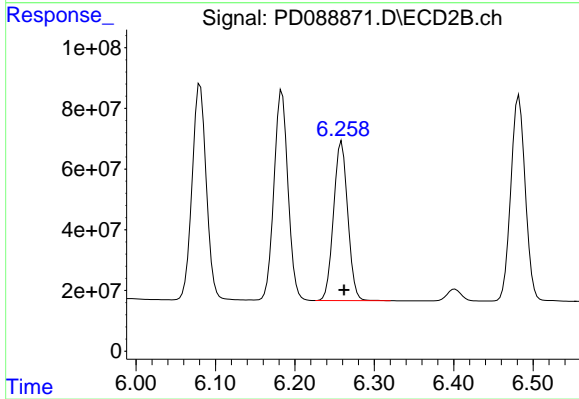
#17 4,4'-DDT

R.T.: 6.184 min
 Delta R.T.: -0.003 min
 Response: 847376398
 Conc: 46.72 ng/ml



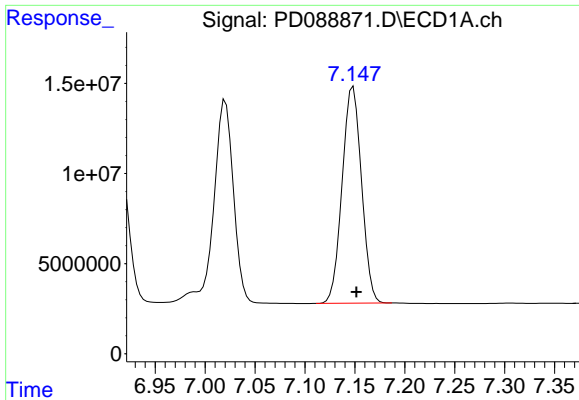
#18 Endrin aldehyde

R.T.: 6.914 min
 Delta R.T.: -0.004 min
 Response: 128153278
 Conc: 49.78 ng/ml



#18 Endrin aldehyde

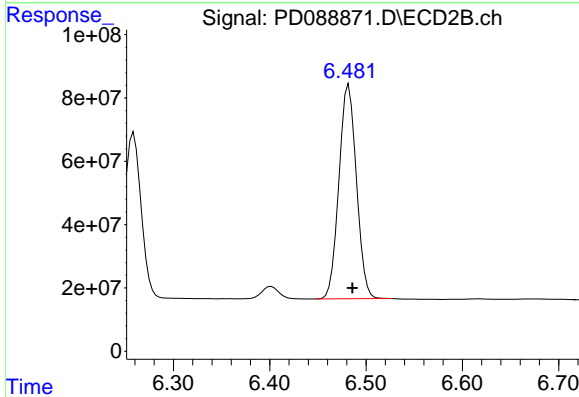
R.T.: 6.259 min
 Delta R.T.: -0.003 min
 Response: 650004674
 Conc: 46.67 ng/ml



#19 Endosulfan Sulfate

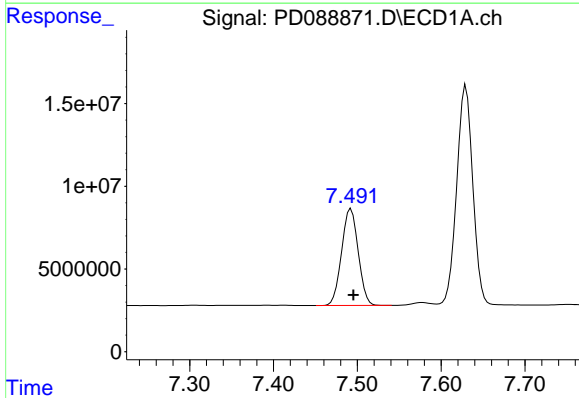
R.T.: 7.148 min
 Delta R.T.: -0.003 min
 Response: 162383056
 Conc: 50.70 ng/ml

Instrument :
 ECD_D
 ClientSampleId :
 PB168320BS



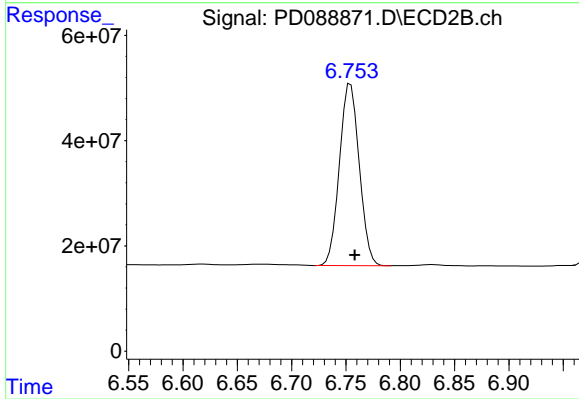
#19 Endosulfan Sulfate

R.T.: 6.482 min
 Delta R.T.: -0.004 min
 Response: 850886512
 Conc: 47.92 ng/ml



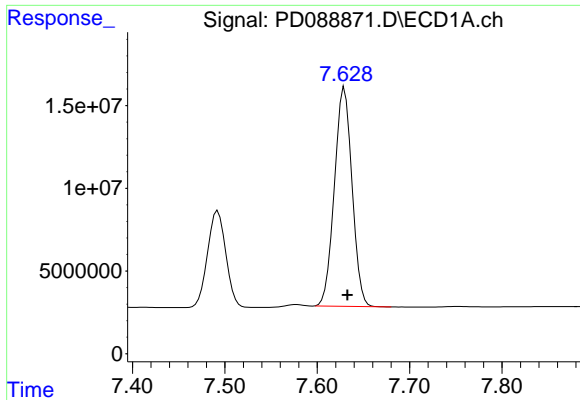
#20 Methoxychlor

R.T.: 7.492 min
 Delta R.T.: -0.003 min
 Response: 80638334
 Conc: 48.27 ng/ml



#20 Methoxychlor

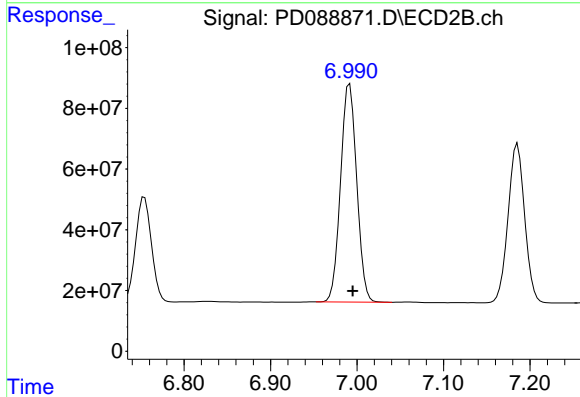
R.T.: 6.754 min
 Delta R.T.: -0.004 min
 Response: 439671398
 Conc: 45.92 ng/ml



#21 Endrin ketone

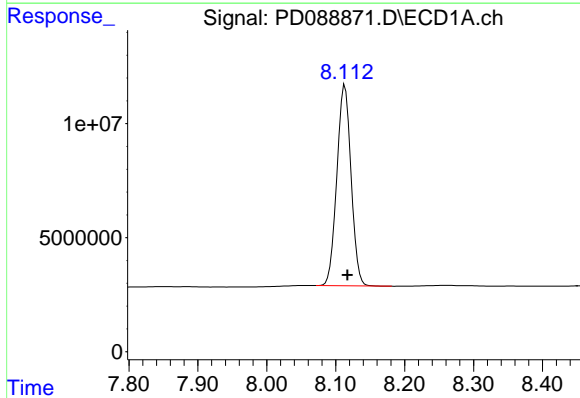
R.T.: 7.630 min
 Delta R.T.: -0.003 min
 Response: 175512477
 Conc: 51.27 ng/ml

Instrument :
 ECD_D
 ClientSampleId :
 PB168320BS



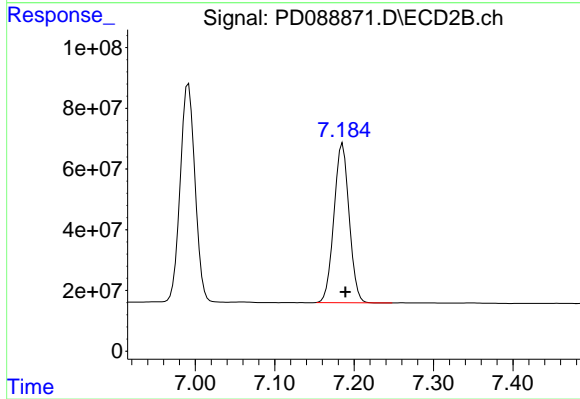
#21 Endrin ketone

R.T.: 6.991 min
 Delta R.T.: -0.003 min
 Response: 927100548
 Conc: 47.92 ng/ml



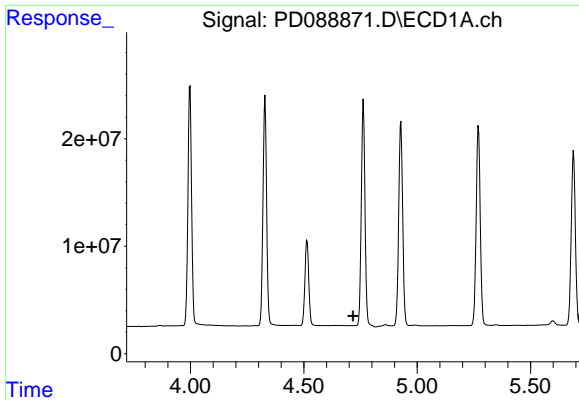
#22 Mirex

R.T.: 8.113 min
 Delta R.T.: -0.003 min
 Response: 126166235
 Conc: 48.56 ng/ml



#22 Mirex

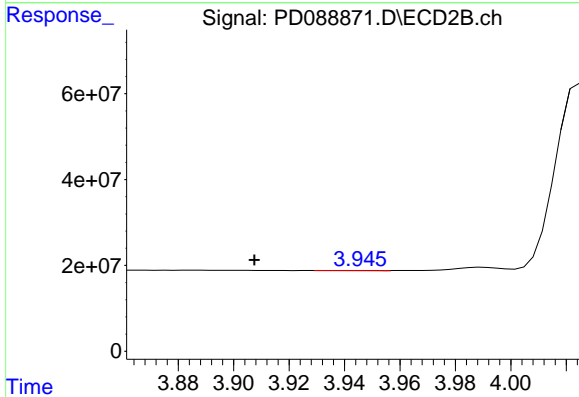
R.T.: 7.186 min
 Delta R.T.: -0.003 min
 Response: 696838358
 Conc: 45.84 ng/ml



#23 Chlordane-1

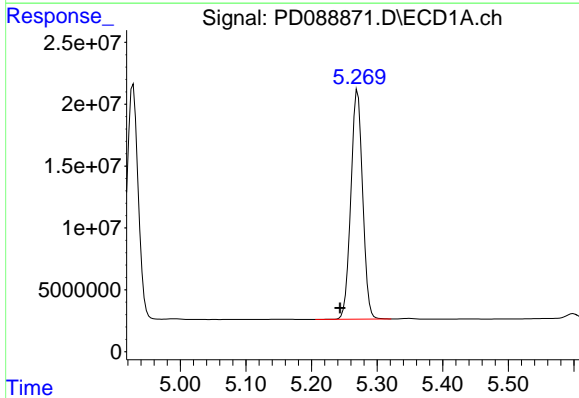
R.T.: 0.000 min
 Exp R.T.: 4.717 min
 Response: 0
 Conc: N.D.

Instrument :
 ECD_D
 ClientSampleId :
 PB168320BS



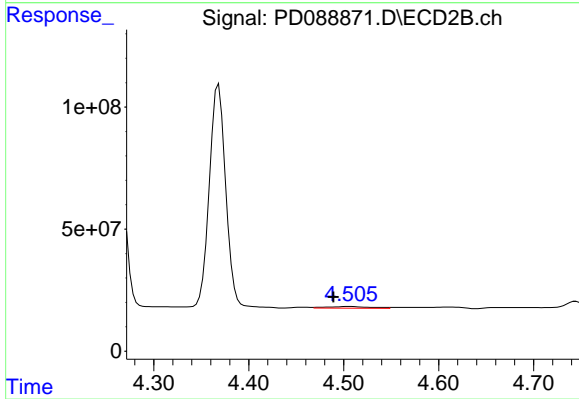
#23 Chlordane-1

R.T.: 3.945 min
 Delta R.T.: 0.038 min
 Response: 758492
 Conc: 0.92 ng/ml



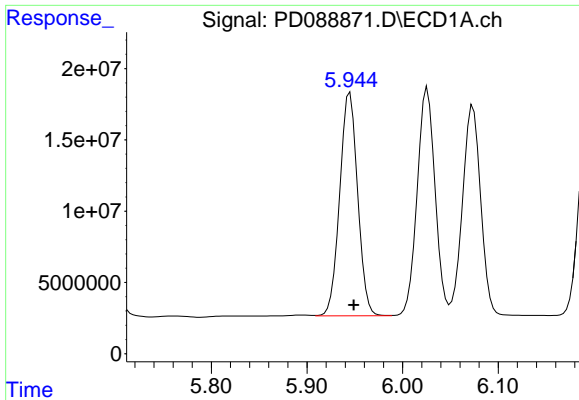
#24 Chlordane-2

R.T.: 5.270 min
 Delta R.T.: 0.027 min
 Response: 230969216
 Conc: 1258.65 ng/ml



#24 Chlordane-2

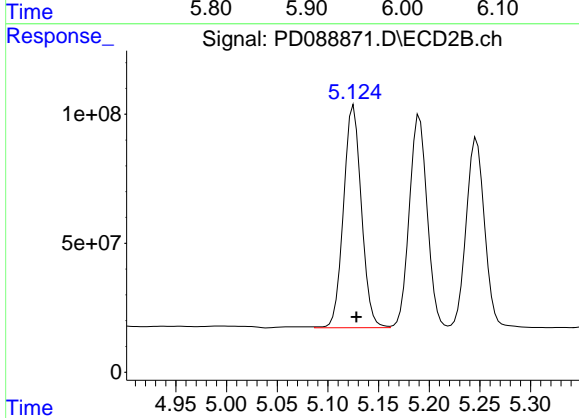
R.T.: 4.506 min
 Delta R.T.: 0.017 min
 Response: 21597699
 Conc: 25.59 ng/ml



#25 Chlordane-3

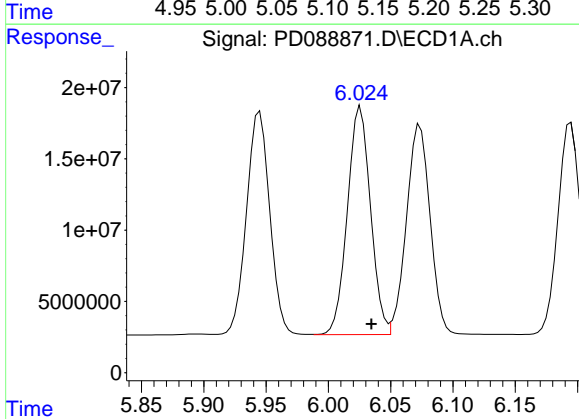
R.T.: 5.945 min
 Delta R.T.: -0.004 min
 Response: 204643214
 Conc: 276.58 ng/ml

Instrument :
 ECD_D
 ClientSampleId :
 PB168320BS



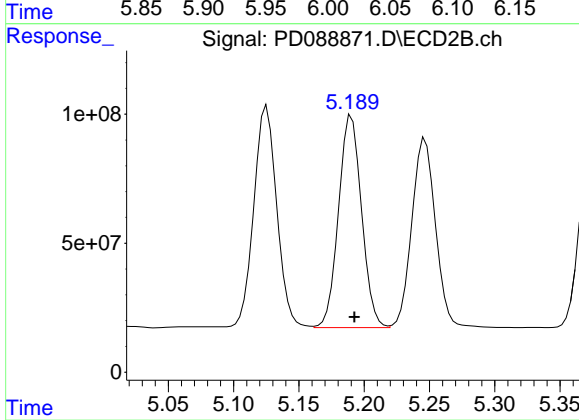
#25 Chlordane-3

R.T.: 5.126 min
 Delta R.T.: -0.003 min
 Response: 1057543787
 Conc: 401.07 ng/ml



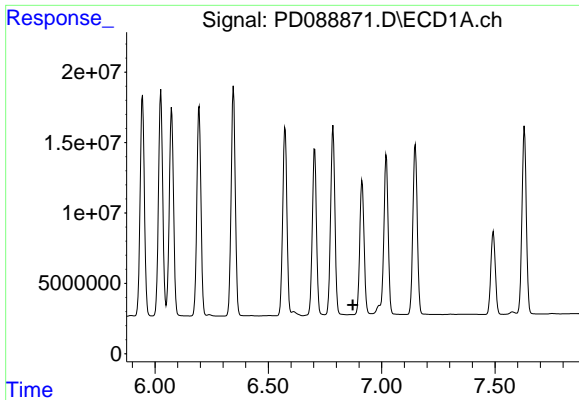
#26 Chlordane-4

R.T.: 6.026 min
 Delta R.T.: -0.009 min
 Response: 207531049
 Conc: 231.57 ng/ml



#26 Chlordane-4

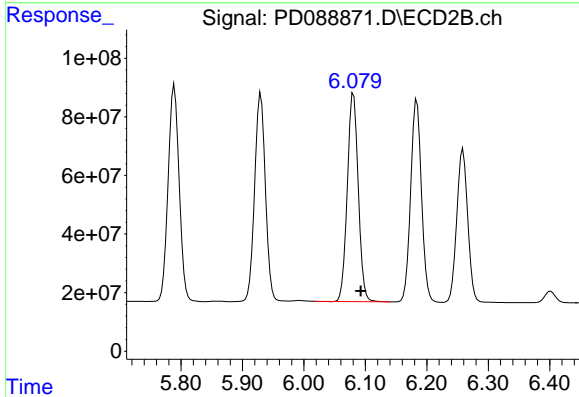
R.T.: 5.190 min
 Delta R.T.: -0.002 min
 Response: 1010987057
 Conc: 456.94 ng/ml



#27 Chlordane-5

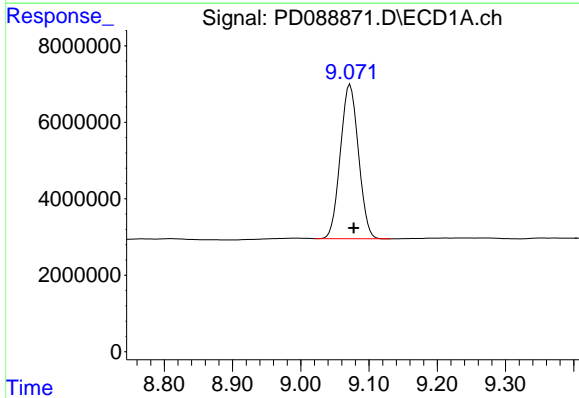
R.T.: 0.000 min
 Exp R.T.: 6.873 min
 Response: 0
 Conc: N.D.

Instrument :
 ECD_D
 ClientSampleId :
 PB168320BS



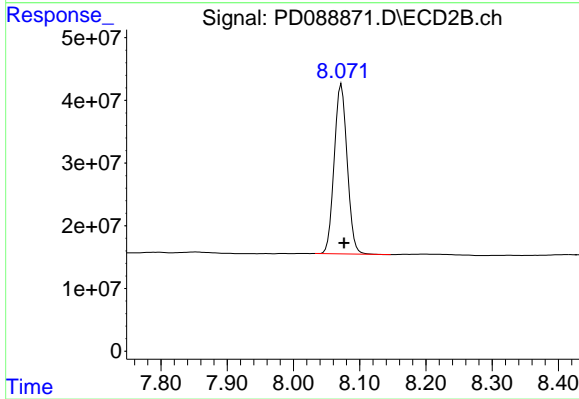
#27 Chlordane-5

R.T.: 6.081 min
 Delta R.T.: -0.012 min
 Response: 882964386
 Conc: 882.21 ng/ml



#28 Decachlorobiphenyl

R.T.: 9.072 min
 Delta R.T.: -0.005 min
 Response: 74310180
 Conc: 21.71 ng/ml



#28 Decachlorobiphenyl

R.T.: 8.072 min
 Delta R.T.: -0.004 min
 Response: 368614027
 Conc: 20.19 ng/ml