

Data Path : Z:\pestpcbsrv\HPCHEM1\ECD_D\Data\PD061121\
 Data File : PD063754.D
 Signal(s) : Signal #1: ECD1A.ch Signal #2: ECD2B.ch
 Acq On : 11 Jun 2021 09:24
 Operator : AR\AJ
 Sample : PEM04
 Misc :
 ALS Vial : 3 Sample Multiplier: 1

Instrument :
 ECD_D
 ClientSampleId :
 PEM004

Integration File signal 1: autoint1.e
 Integration File signal 2: autoint2.e
 Quant Time: Jun 14 00:09:17 2021
 Quant Method : Z:\pestpcbsrv\HPCHEM1\ECD_D\Method\PD060321CLP.M
 Quant Title : GC Extractables
 QLast Update : Thu Jun 03 06:08:10 2021
 Response via : Initial Calibration
 Integrator: ChemStation

Volume Inj. : 1 µl
 Signal #1 Phase : ZB-MR2 Signal #2 Phase: ZB-MR1
 Signal #1 Info : 30M x 0.32mm x0.2 Signal #2 Info : 30M x 0.32mm x 0.50µm

Compound	RT#1	RT#2	Resp#1	Resp#2	ng/ml	ng/ml

System Monitoring Compounds						
1) SA Tetrachlo...	3.438	3.970	28162947	285.4E6	20.518	20.277
27) SA Decachlor...	8.194	9.024	31647618	264.6E6	19.479	18.037
Target Compounds						
2) A alpha-BHC	3.874	4.358	20197184	226.2E6	9.892	10.235
3) MA gamma-BHC...	4.158	4.642	19374167	205.6E6	9.623	10.064
6) B beta-BHC	4.409	4.814	9691497	88489041	10.418	9.892
7) B delta-BHC	0.000	5.006	0	26792233	N.D.	1.215
10) B trans-Chl...	5.372	6.047	1709845	13589826	0.935	0.682 #
11) B cis-Chlor...	5.372f	0.000	1709845	0	0.964	N.D. #
12) B 4,4'-DDE	0.000	6.304	0	4985369	N.D.	0.263
13) MA Dieldrin	0.000	6.471	0	14414536	N.D.	0.753
14) MA Endrin	5.989	6.671	71994929	665.3E6	44.546	42.012
15) B Endosulfa...	0.000	6.891	0	9501145	N.D.	0.628
16) A 4,4'-DDD	6.115	6.794	6378443	74414378	4.316	4.898
17) MA 4,4'-DDT	6.356	7.092	136.3E6	1215.6E6	89.764	79.094
18) B Endrin al...	6.430	7.004	2615634	23647168	2.007	1.792
20) A Methoxychlor	6.902	7.550	175.1E6	1426.3E6	212.207	197.692
21) B Endrin ke...	7.135	7.697	8879324	58584248	5.034	3.802
22) Toxaphene-1	0.000	6.374	0	4509937	N.D.	54.100
23) Toxaphene-2	5.901	6.671	1215934	665.3E6	105.503	6287.135 #
24) Toxaphene-3	6.115	7.092	6378443	1215.6E6	481.147	8467.265 #
25) Toxaphene-4	6.356	7.092	136.3E6	1215.6E6	4473.509	3004.895 #
26) Toxaphene-5	6.972	7.650	726849	26497027	21.216	146.445 #

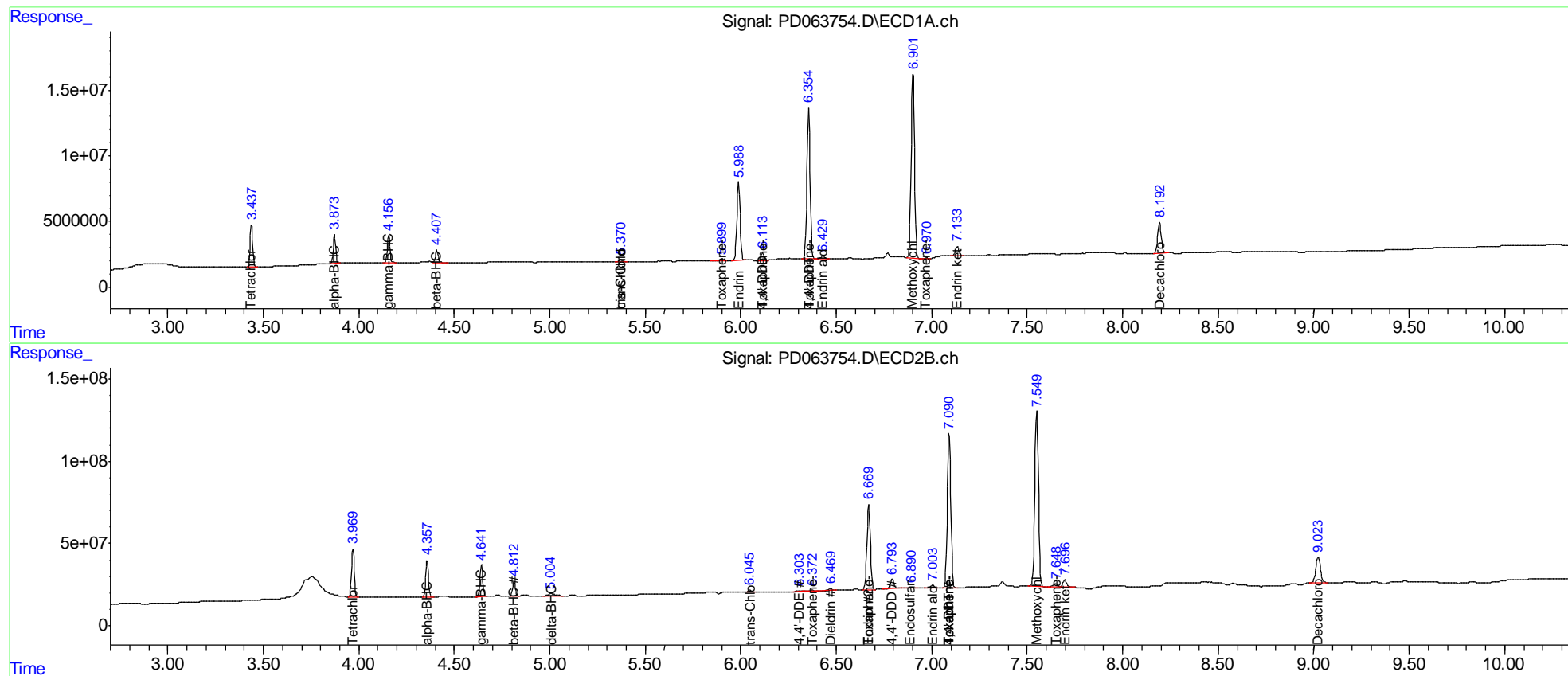
(f)=RT Delta > 1/2 Window (#)=Amounts differ by > 25% (m)=manual int.

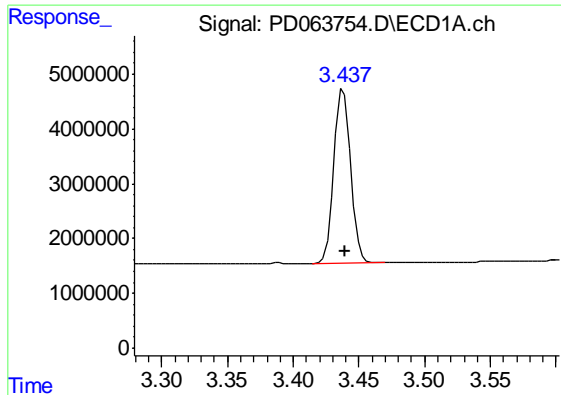
Data Path : Z:\pestpcbsrv\HPCHEM1\ECD_D\Data\PD061121\
 Data File : PD063754.D
 Signal(s) : Signal #1: ECD1A.ch Signal #2: ECD2B.ch
 Acq On : 11 Jun 2021 09:24
 Operator : AR\AJ
 Sample : PEM04
 Misc :
 ALS Vial : 3 Sample Multiplier: 1

Instrument :
 ECD_D
 Client Sampled :
 PEM004

Integration File signal 1: autoint1.e
 Integration File signal 2: autoint2.e
 Quant Time: Jun 14 00:09:17 2021
 Quant Method : Z:\pestpcbsrv\HPCHEM1\ECD_D\Method\PD060321CLP.M
 Quant Title : GC Extractables
 QLast Update : Thu Jun 03 06:08:10 2021
 Response via : Initial Calibration
 Integrator: ChemStation

Volume Inj. : 1 µl
 Signal #1 Phase : ZB-MR2 Signal #2 Phase: ZB-MR1
 Signal #1 Info : 30M x 0.32mm x0.2 Signal #2 Info : 30M x 0.32mm x 0.50µm

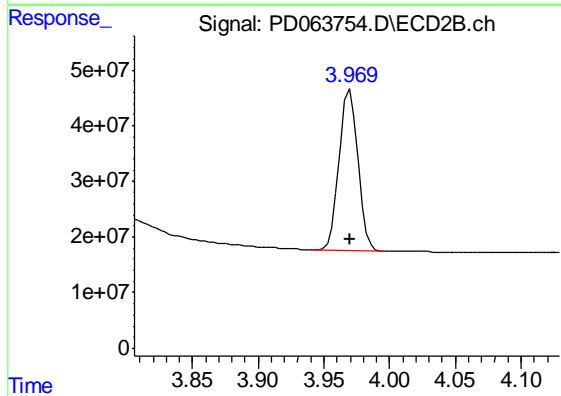




#1 Tetrachloro-m-xylene

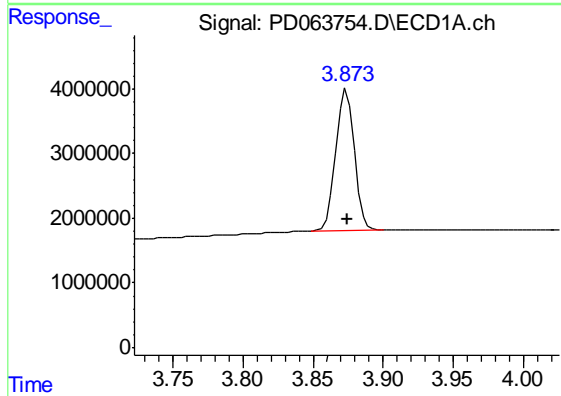
R.T.: 3.438 min
 Delta R.T.: 0.000 min
 Response: 28162947
 Conc: 20.52 ng/ml

Instrument :
 ECD_D
 ClientSampleId :
 PEM004



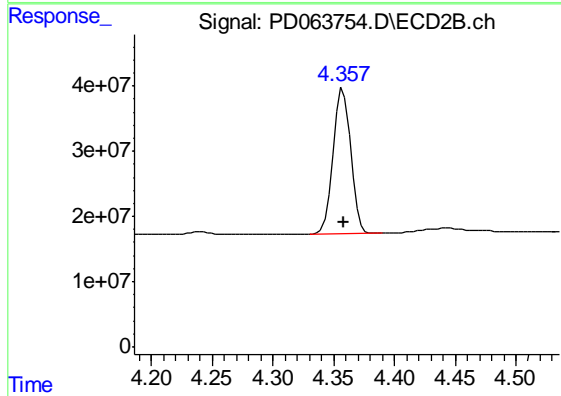
#1 Tetrachloro-m-xylene

R.T.: 3.970 min
 Delta R.T.: 0.000 min
 Response: 285439890
 Conc: 20.28 ng/ml



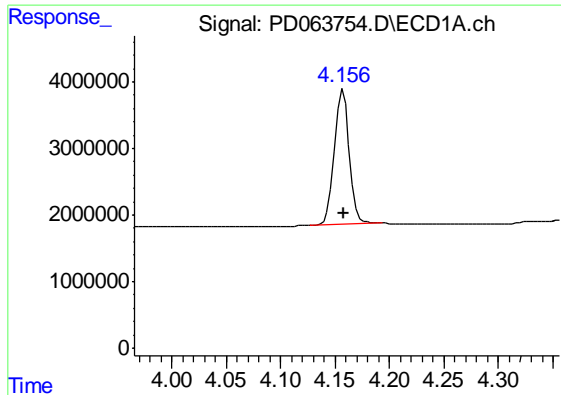
#2 alpha-BHC

R.T.: 3.874 min
 Delta R.T.: 0.000 min
 Response: 20197184
 Conc: 9.89 ng/ml



#2 alpha-BHC

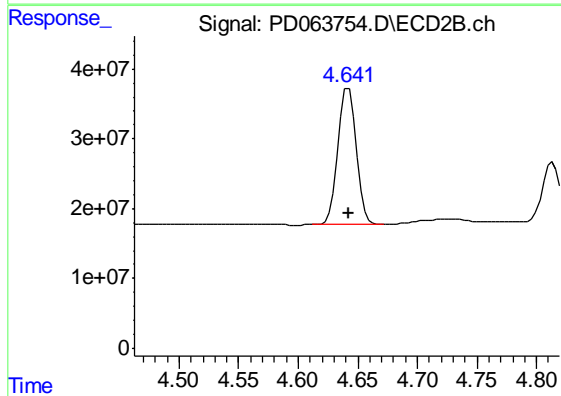
R.T.: 4.358 min
 Delta R.T.: 0.000 min
 Response: 226195987
 Conc: 10.23 ng/ml



#3 gamma-BHC (Lindane)

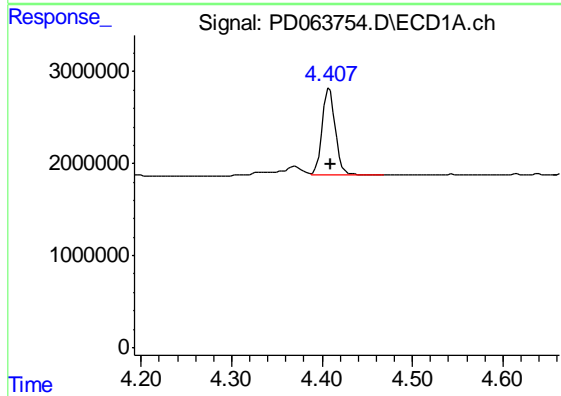
R.T.: 4.158 min
 Delta R.T.: 0.000 min
 Response: 19374167
 Conc: 9.62 ng/ml

Instrument :
 ECD_D
 ClientSampled :
 PEM004



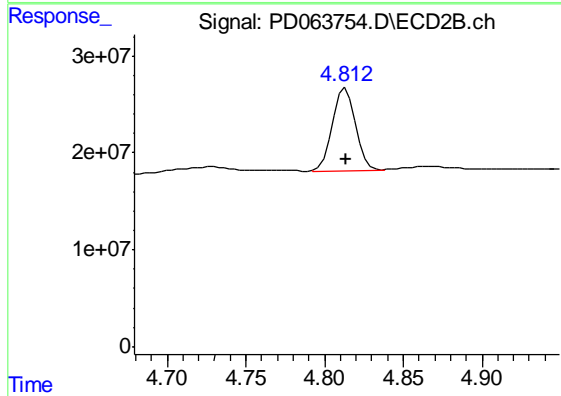
#3 gamma-BHC (Lindane)

R.T.: 4.642 min
 Delta R.T.: 0.000 min
 Response: 205605781
 Conc: 10.06 ng/ml



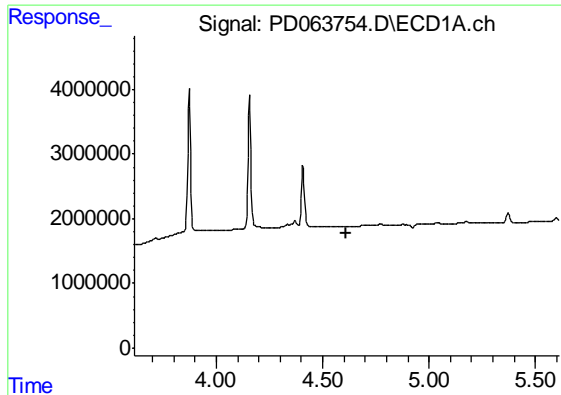
#6 beta-BHC

R.T.: 4.409 min
 Delta R.T.: 0.000 min
 Response: 9691497
 Conc: 10.42 ng/ml



#6 beta-BHC

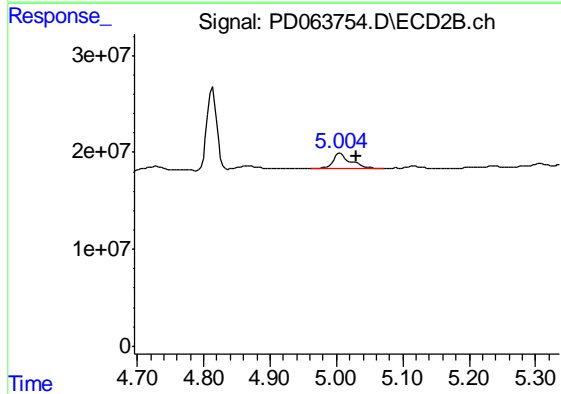
R.T.: 4.814 min
 Delta R.T.: 0.000 min
 Response: 88489041
 Conc: 9.89 ng/ml



#7 delta-BHC

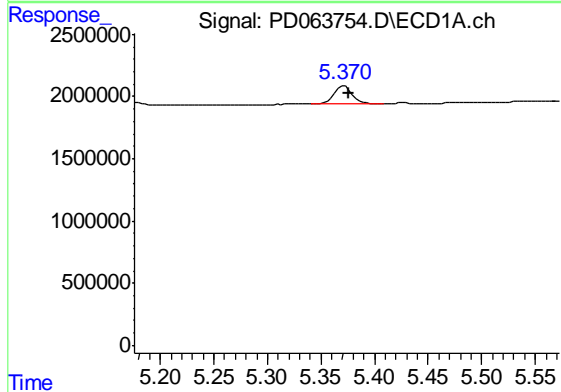
R.T.: 0.000 min
 Exp R.T. : 4.613 min
 Response: 0
 Conc: N.D.

Instrument :
 ECD_D
 ClientSampleId :
 PEM004



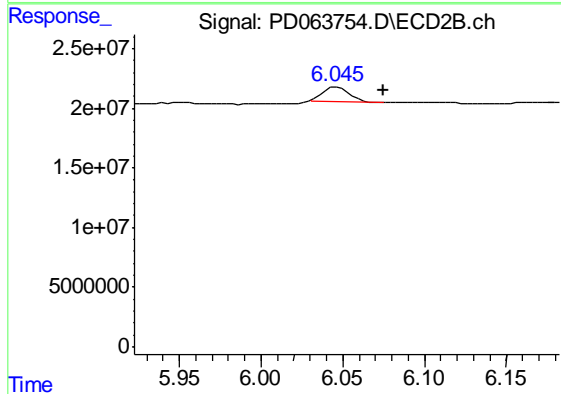
#7 delta-BHC

R.T.: 5.006 min
 Delta R.T.: -0.024 min
 Response: 26792233
 Conc: 1.21 ng/ml



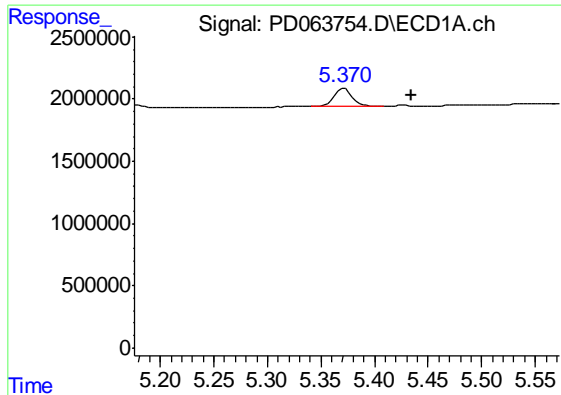
#10 trans-Chlordane

R.T.: 5.372 min
 Delta R.T.: -0.004 min
 Response: 1709845
 Conc: 0.94 ng/ml



#10 trans-Chlordane

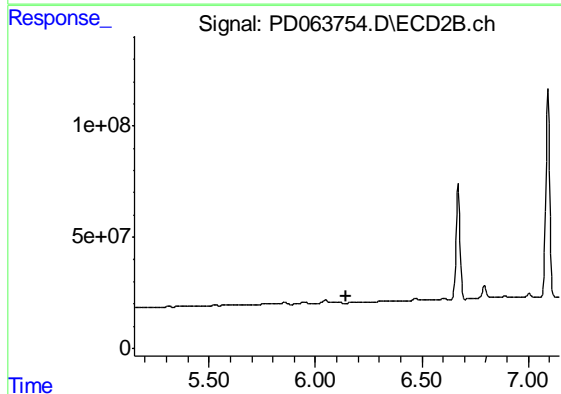
R.T.: 6.047 min
 Delta R.T.: -0.028 min
 Response: 13589826
 Conc: 0.68 ng/ml



#11 cis-Chlordane

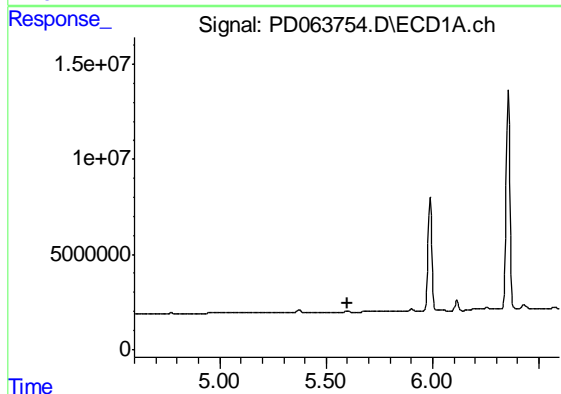
R.T.: 5.372 min
 Delta R.T.: -0.063 min
 Response: 1709845
 Conc: 0.96 ng/ml

Instrument :
 ECD_D
 ClientSampleId :
 PEM004



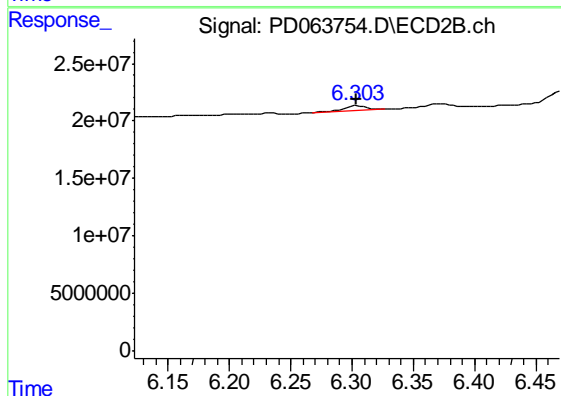
#11 cis-Chlordane

R.T.: 0.000 min
 Exp R.T. : 6.147 min
 Response: 0
 Conc: N.D.



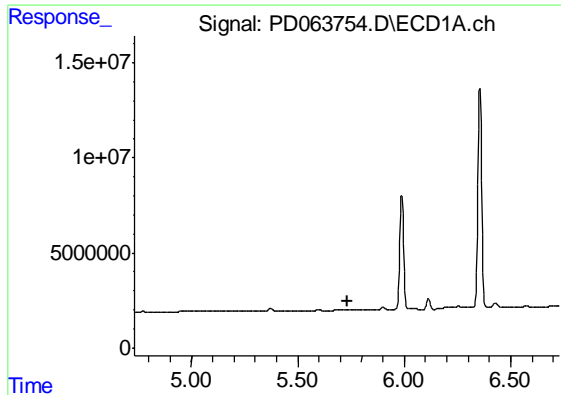
#12 4,4'-DDE

R.T.: 0.000 min
 Exp R.T. : 5.599 min
 Response: 0
 Conc: N.D.



#12 4,4'-DDE

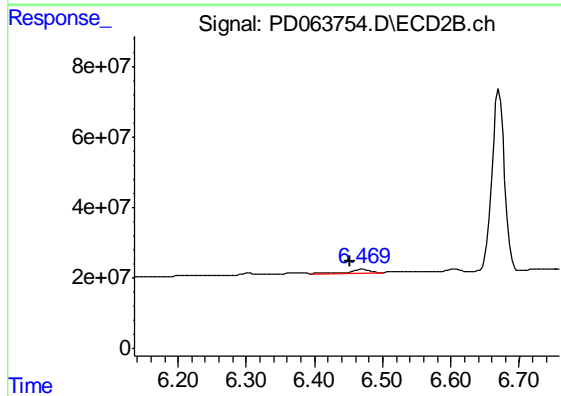
R.T.: 6.304 min
 Delta R.T.: 0.000 min
 Response: 4985369
 Conc: 0.26 ng/ml



#13 Dieldrin

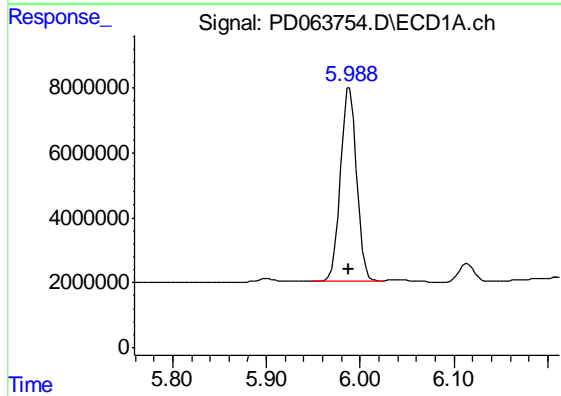
R.T.: 0.000 min
 Exp R.T. : 5.731 min
 Response: 0
 Conc: N.D.

Instrument :
 ECD_D
 ClientSampled :
 PEM004



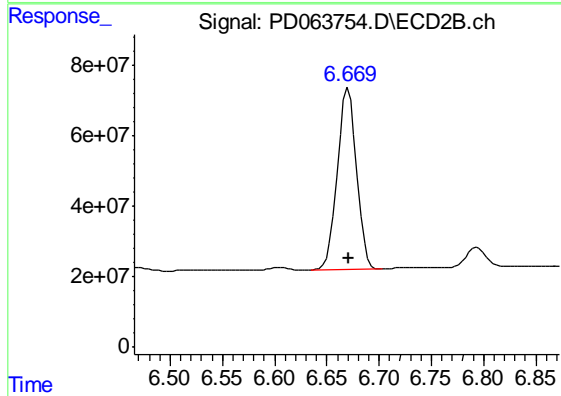
#13 Dieldrin

R.T.: 6.471 min
 Delta R.T.: 0.018 min
 Response: 14414536
 Conc: 0.75 ng/ml



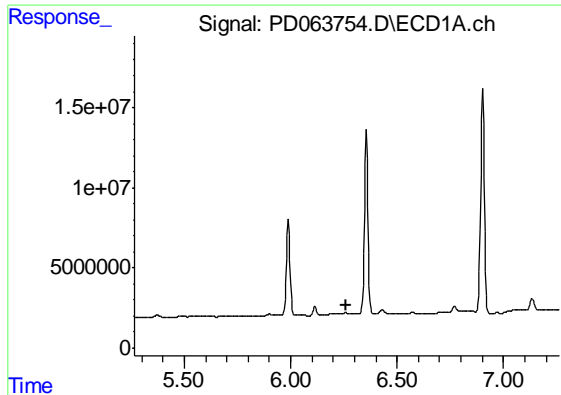
#14 Endrin

R.T.: 5.989 min
 Delta R.T.: 0.000 min
 Response: 71994929
 Conc: 44.55 ng/ml



#14 Endrin

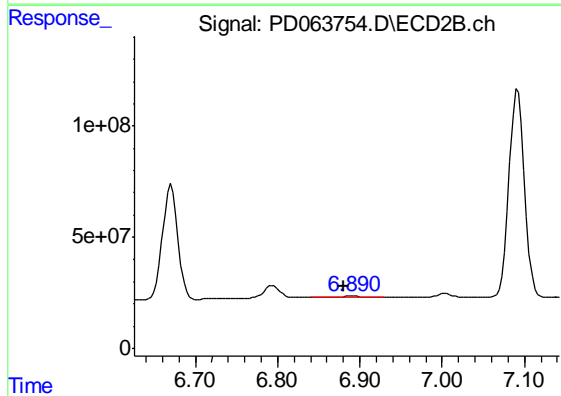
R.T.: 6.671 min
 Delta R.T.: 0.000 min
 Response: 665260543
 Conc: 42.01 ng/ml



#15 Endosulfan II

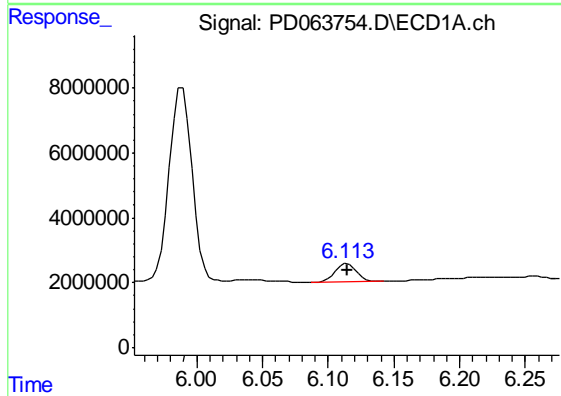
R.T.: 0.000 min
 Exp R.T. : 6.263 min
 Response: 0
 Conc: N.D.

Instrument :
 ECD_D
 ClientSampleId :
 PEM004



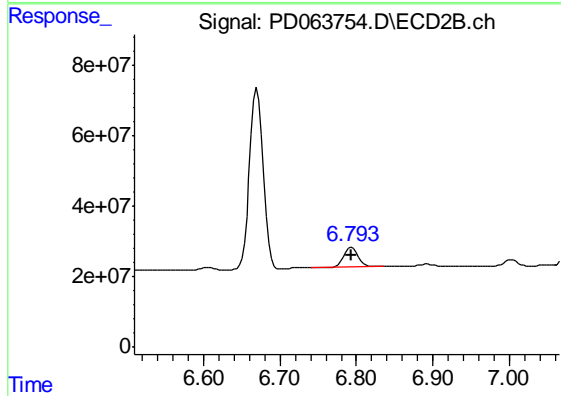
#15 Endosulfan II

R.T.: 6.891 min
 Delta R.T.: 0.011 min
 Response: 9501145
 Conc: 0.63 ng/ml



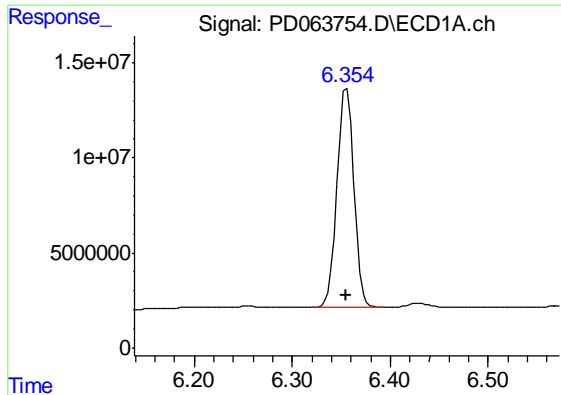
#16 4,4'-DDD

R.T.: 6.115 min
 Delta R.T.: 0.000 min
 Response: 6378443
 Conc: 4.32 ng/ml



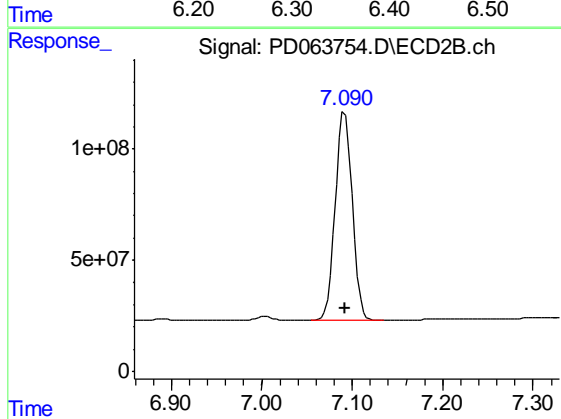
#16 4,4'-DDD

R.T.: 6.794 min
 Delta R.T.: 0.001 min
 Response: 74414378
 Conc: 4.90 ng/ml

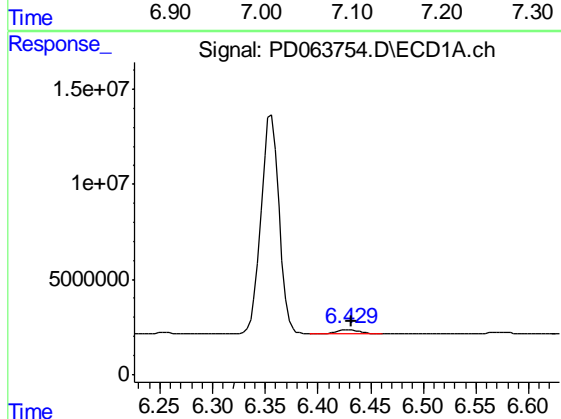


#17 4,4'-DDT
 R.T.: 6.356 min
 Delta R.T.: 0.000 min
 Response: 136282688
 Conc: 89.76 ng/ml

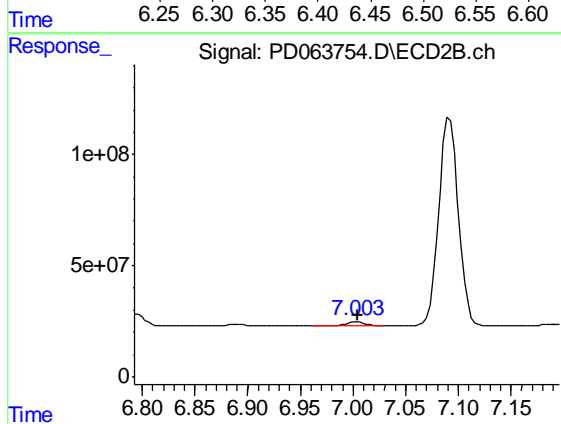
Instrument :
 ECD_D
 ClientSampleId :
 PEM004



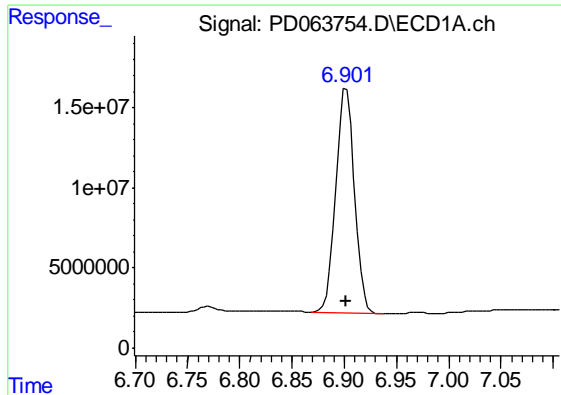
#17 4,4'-DDT
 R.T.: 7.092 min
 Delta R.T.: 0.000 min
 Response: 1215620875
 Conc: 79.09 ng/ml



#18 Endrin aldehyde
 R.T.: 6.430 min
 Delta R.T.: -0.002 min
 Response: 2615634
 Conc: 2.01 ng/ml



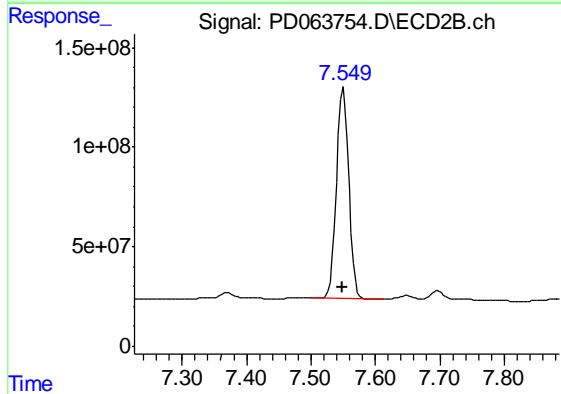
#18 Endrin aldehyde
 R.T.: 7.004 min
 Delta R.T.: 0.000 min
 Response: 23647168
 Conc: 1.79 ng/ml



#20 Methoxychlor

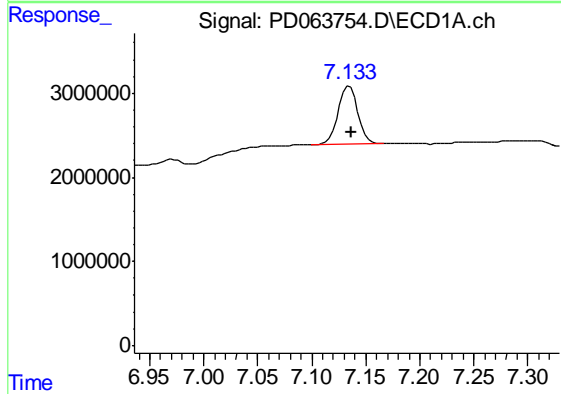
R.T.: 6.902 min
 Delta R.T.: 0.000 min
 Response: 175115912
 Conc: 212.21 ng/ml

Instrument :
 ECD_D
 ClientSampleId :
 PEM004



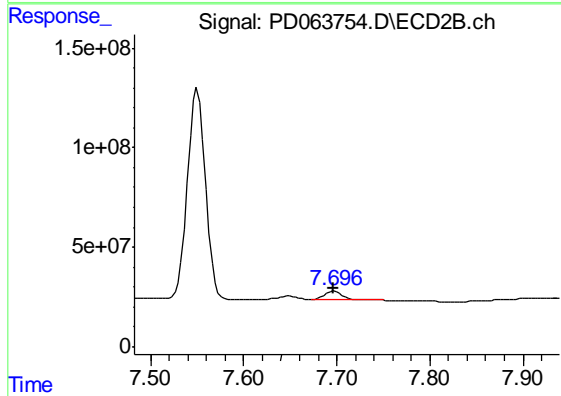
#20 Methoxychlor

R.T.: 7.550 min
 Delta R.T.: 0.000 min
 Response: 1426349556
 Conc: 197.69 ng/ml



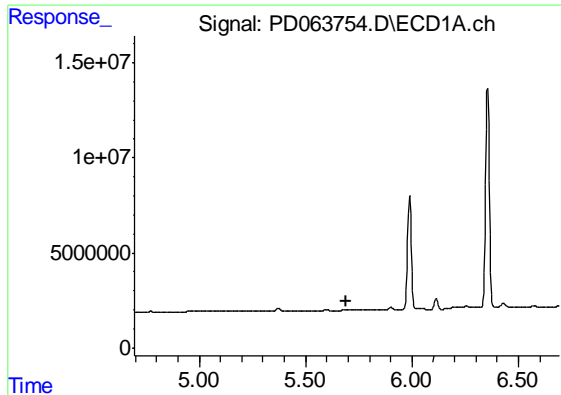
#21 Endrin ketone

R.T.: 7.135 min
 Delta R.T.: -0.002 min
 Response: 8879324
 Conc: 5.03 ng/ml



#21 Endrin ketone

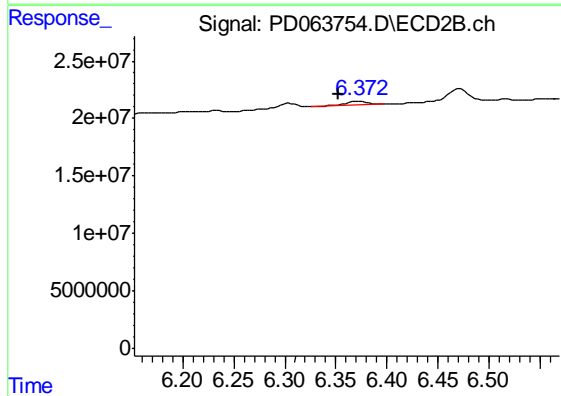
R.T.: 7.697 min
 Delta R.T.: 0.000 min
 Response: 58584248
 Conc: 3.80 ng/ml



#22 Toxaphene-1

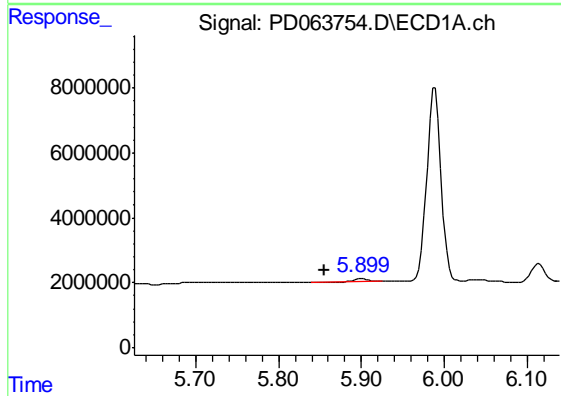
R.T.: 0.000 min
 Exp R.T. : 5.694 min
 Response: 0
 Conc: N.D.

Instrument :
 ECD_D
 ClientSampleId :
 PEM004



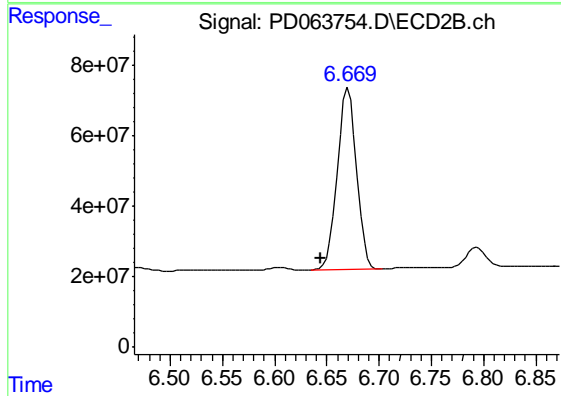
#22 Toxaphene-1

R.T.: 6.374 min
 Delta R.T.: 0.021 min
 Response: 4509937
 Conc: 54.10 ng/ml



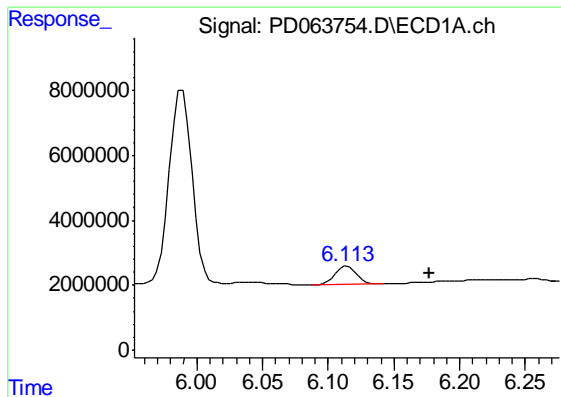
#23 Toxaphene-2

R.T.: 5.901 min
 Delta R.T.: 0.046 min
 Response: 1215934
 Conc: 105.50 ng/ml



#23 Toxaphene-2

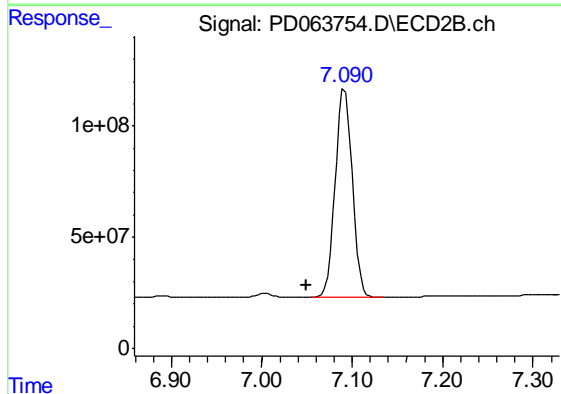
R.T.: 6.671 min
 Delta R.T.: 0.027 min
 Response: 665260543
 Conc: 6287.13 ng/ml



#24 Toxaphene-3

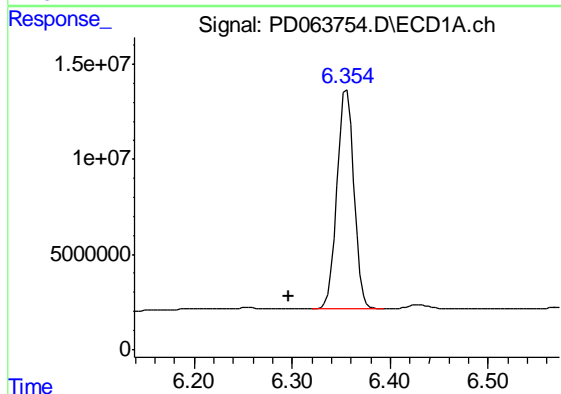
R.T.: 6.115 min
 Delta R.T.: -0.062 min
 Response: 6378443
 Conc: 481.15 ng/ml

Instrument :
 ECD_D
 ClientSampled :
 PEM004



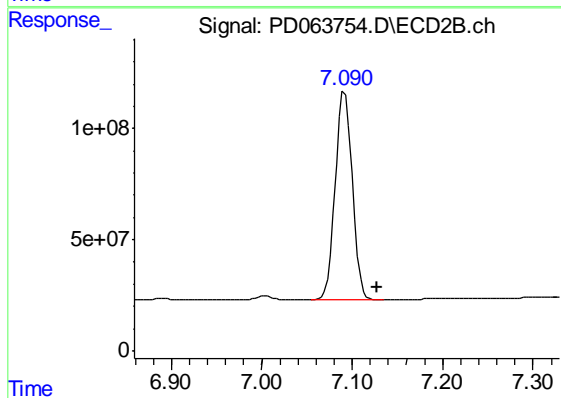
#24 Toxaphene-3

R.T.: 7.092 min
 Delta R.T.: 0.042 min
 Response: 1215620875
 Conc: 8467.26 ng/ml



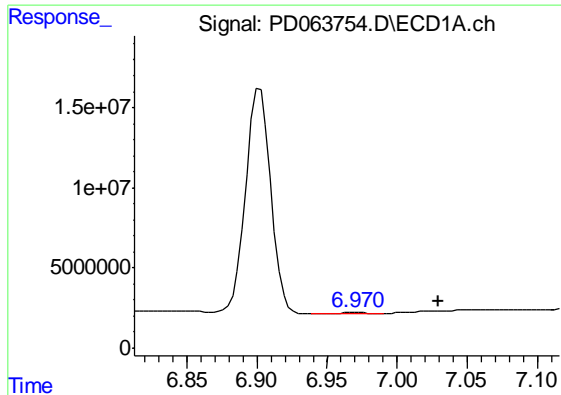
#25 Toxaphene-4

R.T.: 6.356 min
 Delta R.T.: 0.059 min
 Response: 136282688
 Conc: 4473.51 ng/ml



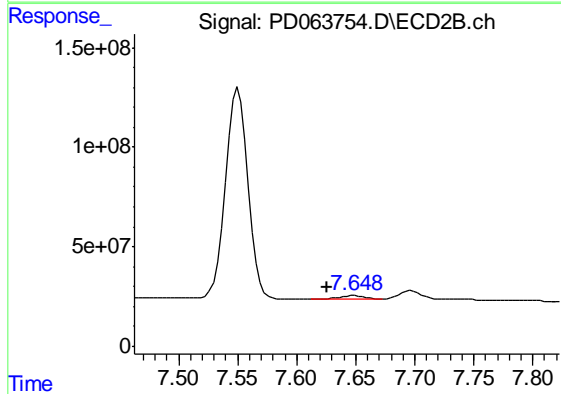
#25 Toxaphene-4

R.T.: 7.092 min
 Delta R.T.: -0.035 min
 Response: 1215620875
 Conc: 3004.90 ng/ml

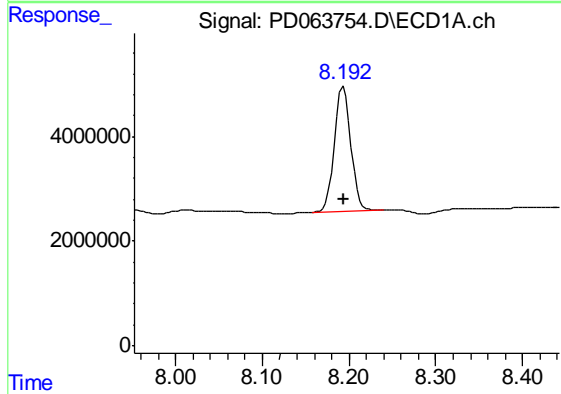


#26 Toxaphene-5
 R.T.: 6.972 min
 Delta R.T.: -0.058 min
 Response: 726849
 Conc: 21.22 ng/ml

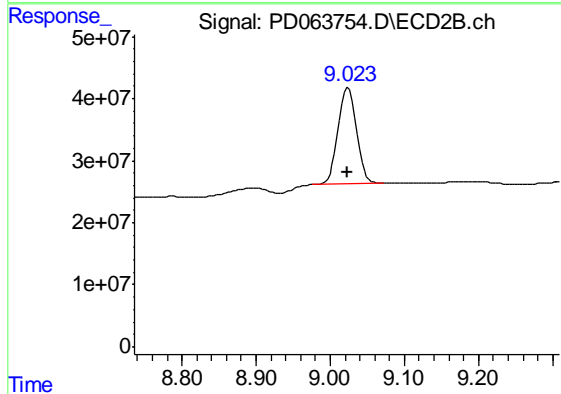
Instrument :
 ECD_D
 ClientSampled :
 PEM004



#26 Toxaphene-5
 R.T.: 7.650 min
 Delta R.T.: 0.024 min
 Response: 26497027
 Conc: 146.44 ng/ml



#27 Decachlorobiphenyl
 R.T.: 8.194 min
 Delta R.T.: 0.000 min
 Response: 31647618
 Conc: 19.48 ng/ml



#27 Decachlorobiphenyl
 R.T.: 9.024 min
 Delta R.T.: 0.000 min
 Response: 264646604
 Conc: 18.04 ng/ml