

Data Path : Z:\pestpcbsrv\HPCHEM1\ECD_D\Data\PD061125\
 Data File : PD088913.D
 Signal(s) : Signal #1: ECD1A.ch Signal #2: ECD2B.ch
 Acq On : 11 Jun 2025 12:44
 Operator : AR\AJ
 Sample : I.BLK
 Misc :
 ALS Vial : 2 Sample Multiplier: 1

Instrument :
 ECD_D
 ClientSampleId :

Integration File signal 1: autoint1.e
 Integration File signal 2: autoint2.e
 Quant Time: Jun 12 07:39:30 2025
 Quant Method : Z:\pestpcbsrv\HPCHEM1\ECD_D\Method\PD051925.M
 Quant Title : GC Extractables
 QLast Update : Mon May 19 15:27:28 2025
 Response via : Initial Calibration
 Integrator: ChemStation

Volume Inj. : 1 µl
 Signal #1 Phase : ZB-MR2 Signal #2 Phase: ZB-MR2
 Signal #1 Info : 30M x 0.32mm x0.5 Signal #2 Info : 30M x 0.32mm x 0.25µm

	Compound	RT#1	RT#2	Resp#1	Resp#2	ng/ml	ng/ml

System Monitoring Compounds							
1)	SA Tetrachlo...	3.555	2.879	49615454	317.5E6	22.930	20.990
28)	SA Decachlor...	9.079	8.074	78342234	404.8E6	22.891	22.173
Target Compounds							
2)	A alpha-BHC	0.000	3.380	0	944713	N.D.	0.040 #
3)	MA gamma-BHC...	4.346	3.724	1336258	1656718	0.290	0.075 #
4)	MA Heptachlor	4.956f	0.000	1387208	0	0.310	N.D. #
6)	B beta-BHC	0.000	4.046f	0	5452801	N.D.	0.560 #
7)	B delta-BHC	4.784f	4.252	1800346	720800	0.426	0.032 #
8)	B Heptachlo...	5.688	0.000	5783069	0	1.457	N.D. #
9)	A Endosulfan I	6.068	0.000	482481	0	0.128	N.D. #
10)	B gamma-Chl...	5.932f	5.127	1043633	19210497	0.262	0.901 #
11)	B alpha-Chl...	6.011f	5.174f	1730642	120.9E6	0.432	5.863 #
12)	B 4,4'-DDE	0.000	5.375	0	20076140	N.D.	0.960 #
13)	MA Dieldrin	0.000	5.521	0	2555659	N.D.	0.121 #
14)	MA Endrin	0.000	5.795	0	38550856	N.D.	1.999 #
15)	B Endosulfa...	6.792	6.070	4628637	292347	1.344	0.016 #
16)	A 4,4'-DDD	6.738f	5.933	13576574	651124	4.875	0.037 #
17)	MA 4,4'-DDT	7.031	6.191	873994	5931454	0.280	0.327
18)	B Endrin al...	6.923	6.259	757200	4386839	0.294	0.315
19)	B Endosulfa...	0.000	6.481	0	1838934	N.D.	0.104 #
20)	A Methoxychlor	7.523f	6.761	80638	1278140	0.048	0.133 #
22)	Mirex	8.122	7.167f	365045	2212806	0.140	0.146
23)	Chlordane-1	0.000	3.890	0	1714402	N.D.	2.075 #
24)	Chlordane-2	0.000	4.491	0	110.4E6	N.D.	130.852 #
25)	Chlordane-3	5.932	5.127	1043633	19210497	1.410	7.285 #
26)	Chlordane-4	6.011f	5.174	1730642	120.9E6	1.931	54.654 #
27)	Chlordane-5	0.000	6.102	0	3449036	N.D.	3.446 #

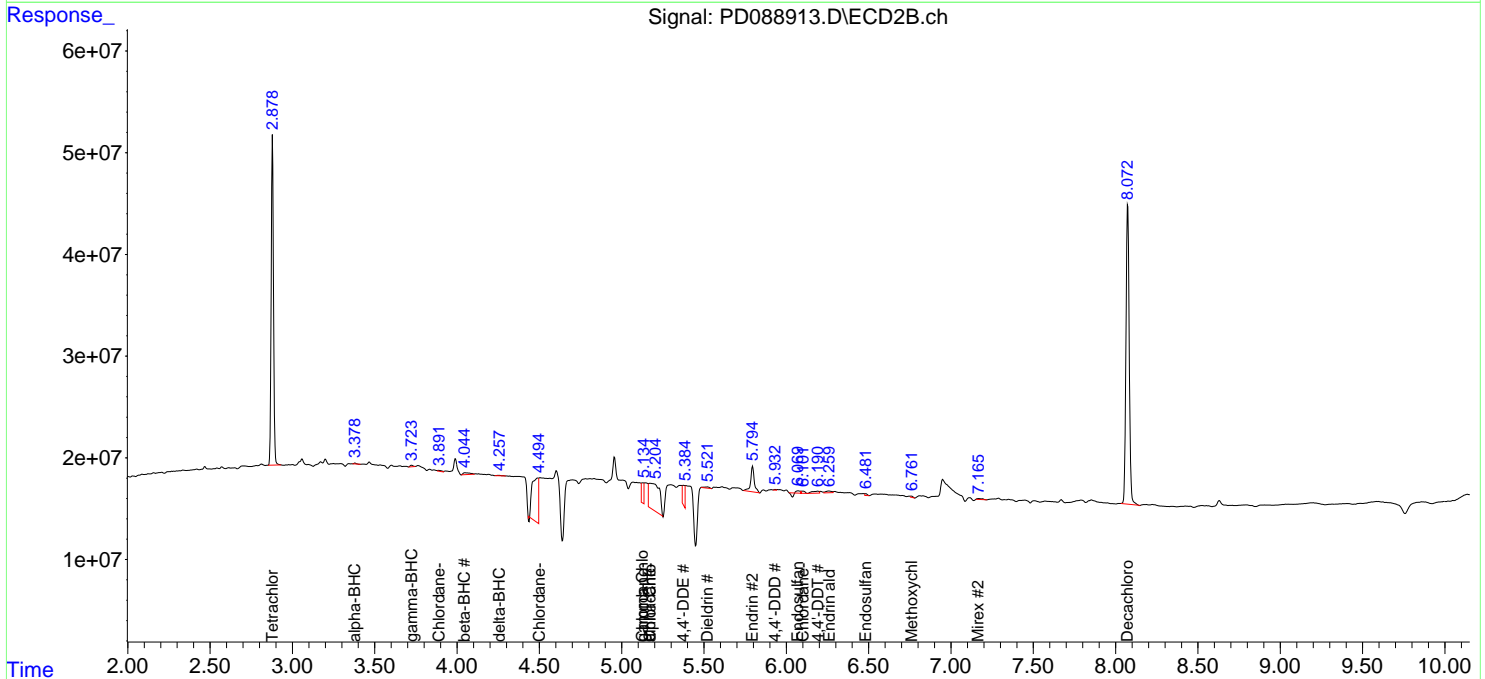
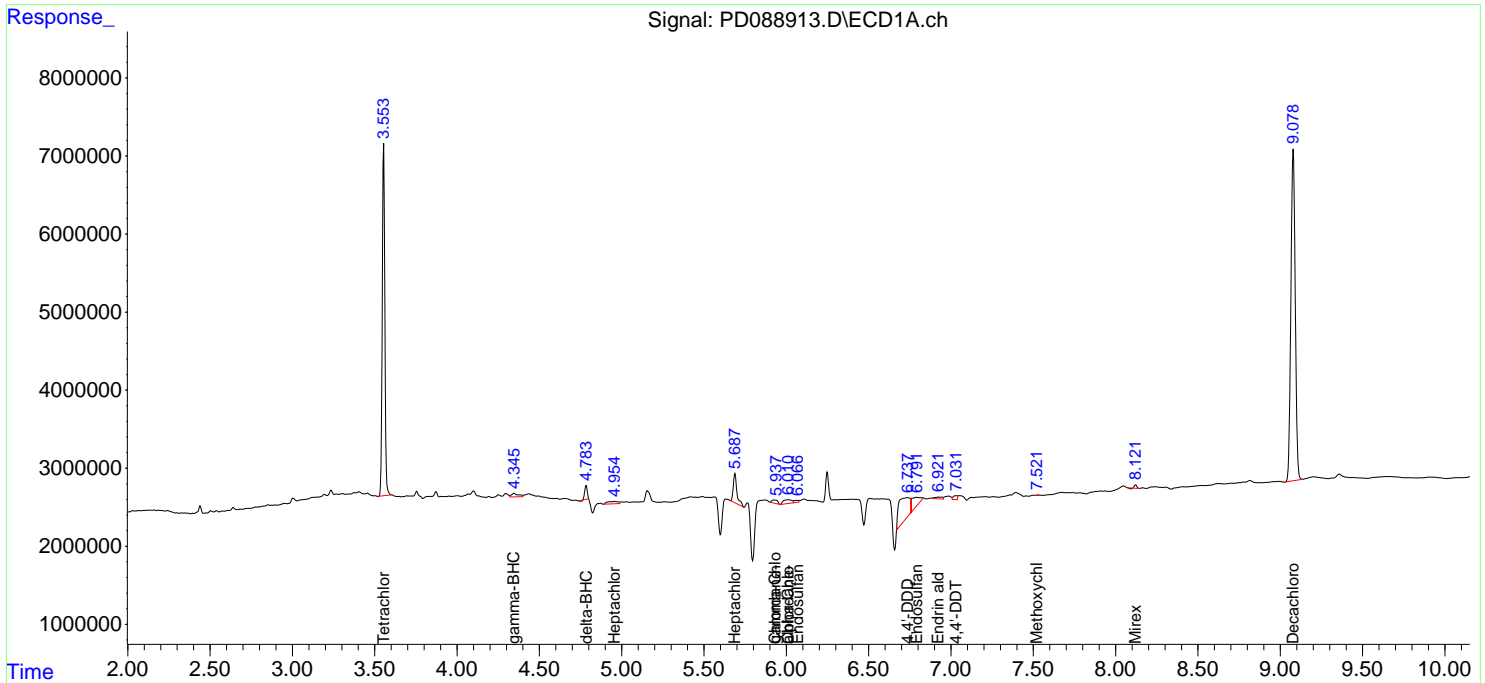
(f)=RT Delta > 1/2 Window (#)=Amounts differ by > 25% (m)=manual int.

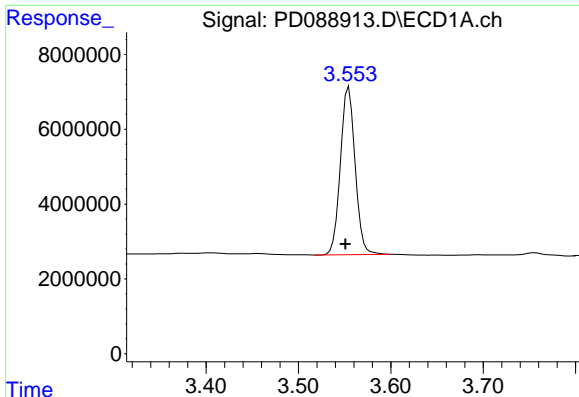
Data Path : Z:\pestpcbsrv\HPCHEM1\ECD_D\Data\PD061125\
 Data File : PD088913.D
 Signal(s) : Signal #1: ECD1A.ch Signal #2: ECD2B.ch
 Acq On : 11 Jun 2025 12:44
 Operator : AR\AJ
 Sample : I.BLK
 Misc :
 ALS Vial : 2 Sample Multiplier: 1

Instrument :
 ECD_D
 ClientSampleId :

Integration File signal 1: autoint1.e
 Integration File signal 2: autoint2.e
 Quant Time: Jun 12 07:39:30 2025
 Quant Method : Z:\pestpcbsrv\HPCHEM1\ECD_D\Method\PD051925.M
 Quant Title : GC Extractables
 QLast Update : Mon May 19 15:27:28 2025
 Response via : Initial Calibration
 Integrator: ChemStation

Volume Inj. : 1 µl
 Signal #1 Phase : ZB-MR1 Signal #2 Phase: ZB-MR2
 Signal #1 Info : 30M x 0.32mm x0.5 Signal #2 Info : 30M x 0.32mm x 0.25µm

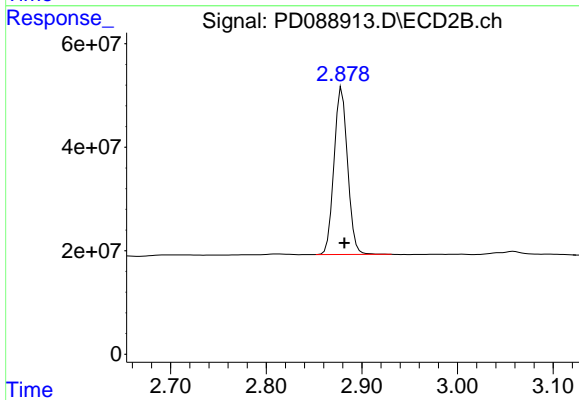




#1 Tetrachloro-m-xylene

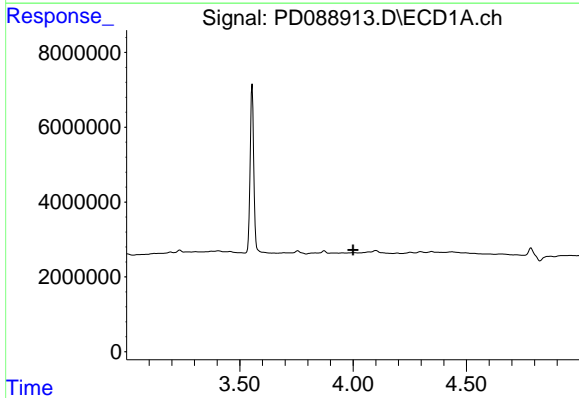
R.T.: 3.555 min
 Delta R.T.: 0.004 min
 Response: 49615454
 Conc: 22.93 ng/ml

Instrument :
 ECD_D
 ClientSampleId :



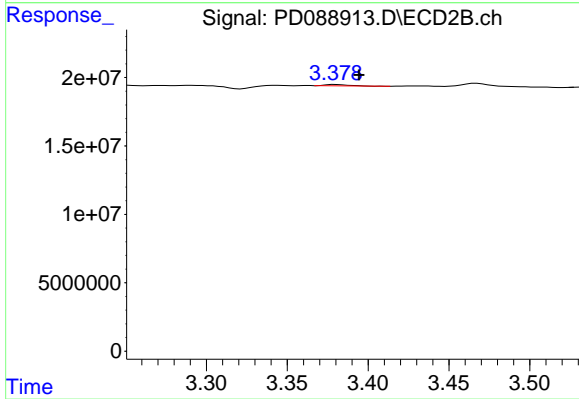
#1 Tetrachloro-m-xylene

R.T.: 2.879 min
 Delta R.T.: -0.003 min
 Response: 317505418
 Conc: 20.99 ng/ml



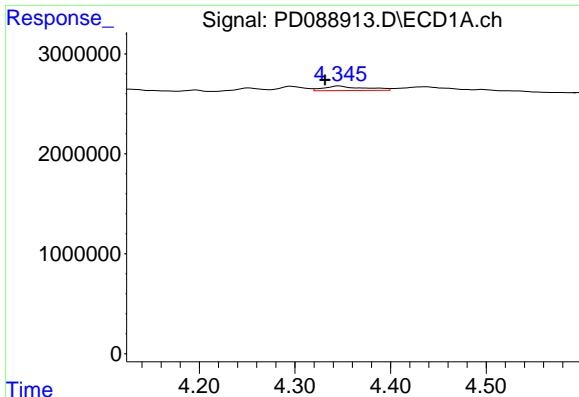
#2 alpha-BHC

R.T.: 0.000 min
 Exp R.T. : 4.000 min
 Response: 0
 Conc: N.D.



#2 alpha-BHC

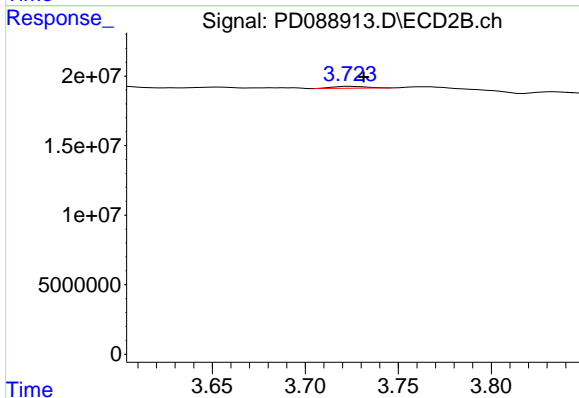
R.T.: 3.380 min
 Delta R.T.: -0.014 min
 Response: 944713
 Conc: 0.04 ng/ml



#3 gamma-BHC (Lindane)

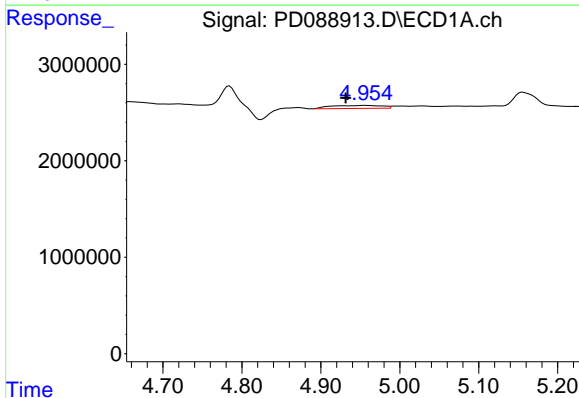
R.T.: 4.346 min
 Delta R.T.: 0.015 min
 Response: 1336258
 Conc: 0.29 ng/ml

Instrument :
 ECD_D
 ClientSampleId :



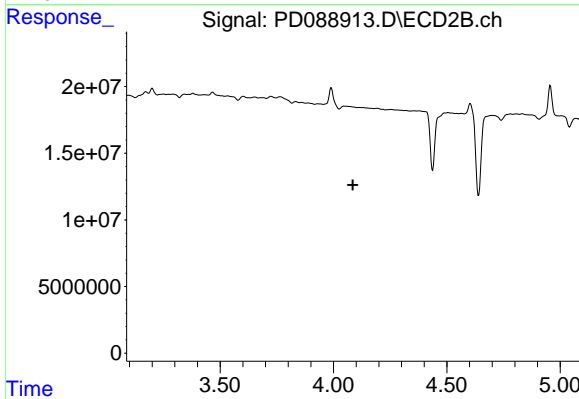
#3 gamma-BHC (Lindane)

R.T.: 3.724 min
 Delta R.T.: -0.007 min
 Response: 1656718
 Conc: 0.07 ng/ml



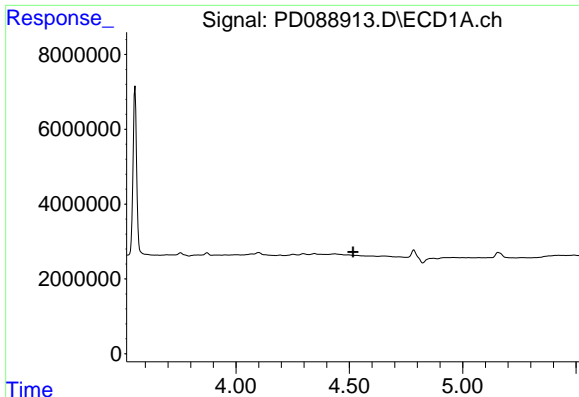
#4 Heptachlor

R.T.: 4.956 min
 Delta R.T.: 0.024 min
 Response: 1387208
 Conc: 0.31 ng/ml



#4 Heptachlor

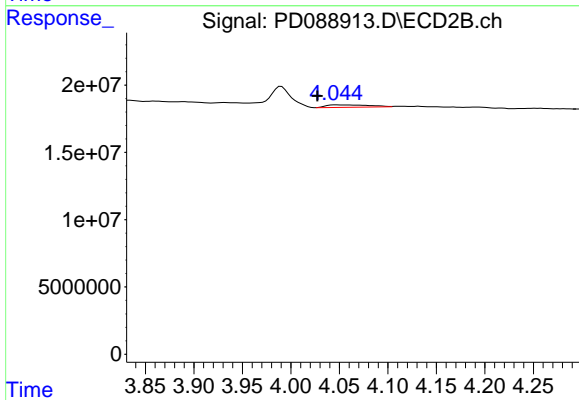
R.T.: 0.000 min
 Exp R.T. : 4.085 min
 Response: 0
 Conc: N.D.



#6 beta-BHC

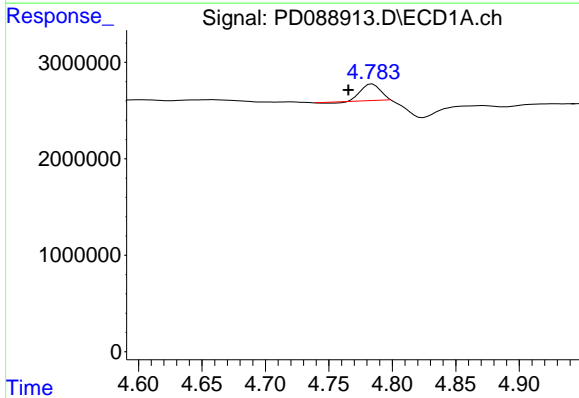
R.T.: 0.000 min
 Exp R.T.: 4.517 min
 Response: 0
 Conc: N.D.

Instrument :
 ECD_D
 ClientSampleId :



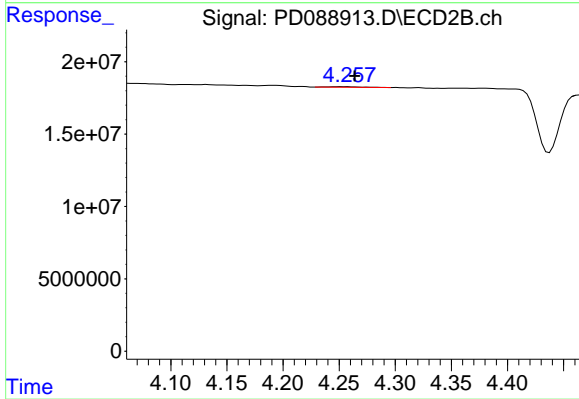
#6 beta-BHC

R.T.: 4.046 min
 Delta R.T.: 0.019 min
 Response: 5452801
 Conc: 0.56 ng/ml



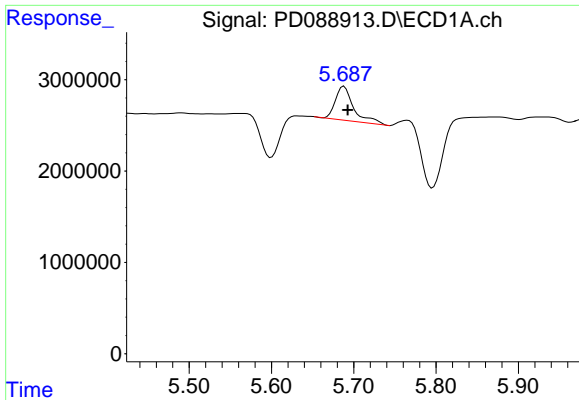
#7 delta-BHC

R.T.: 4.784 min
 Delta R.T.: 0.019 min
 Response: 1800346
 Conc: 0.43 ng/ml



#7 delta-BHC

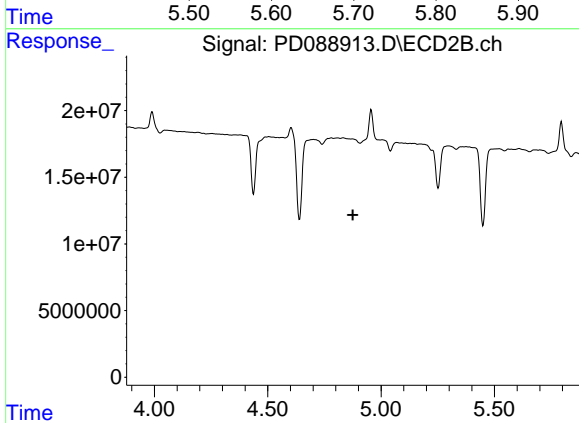
R.T.: 4.252 min
 Delta R.T.: -0.012 min
 Response: 720800
 Conc: 0.03 ng/ml



#8 Heptachlor epoxide

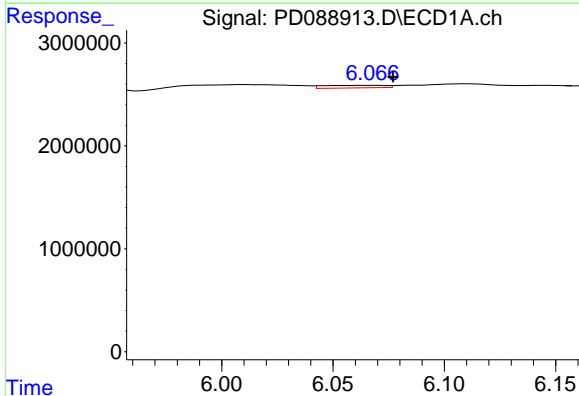
R.T.: 5.688 min
 Delta R.T.: -0.005 min
 Response: 5783069
 Conc: 1.46 ng/ml

Instrument :
 ECD_D
 ClientSampleId :



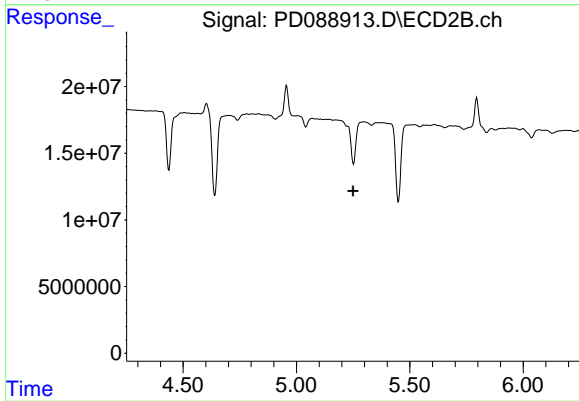
#8 Heptachlor epoxide

R.T.: 0.000 min
 Exp R.T. : 4.875 min
 Response: 0
 Conc: N.D.



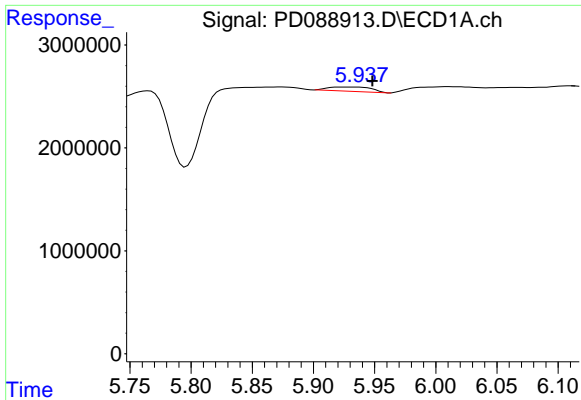
#9 Endosulfan I

R.T.: 6.068 min
 Delta R.T.: -0.009 min
 Response: 482481
 Conc: 0.13 ng/ml



#9 Endosulfan I

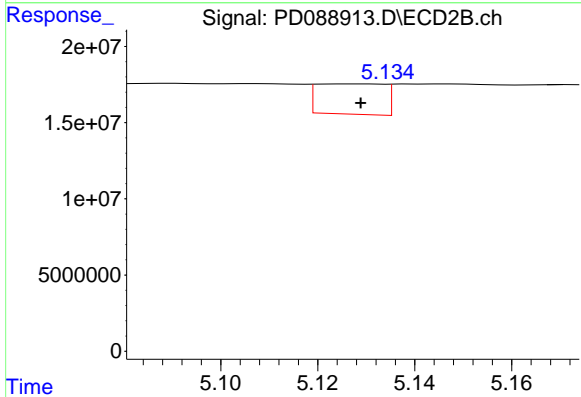
R.T.: 0.000 min
 Exp R.T. : 5.250 min
 Response: 0
 Conc: N.D.



#10 gamma-Chlordane

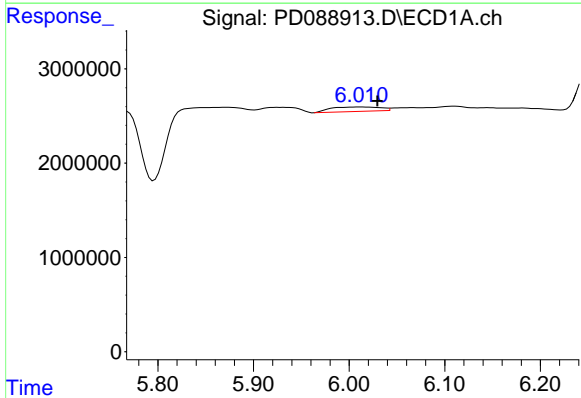
R.T.: 5.932 min
 Delta R.T.: -0.016 min
 Response: 1043633
 Conc: 0.26 ng/ml

Instrument :
 ECD_D
 ClientSampleId :



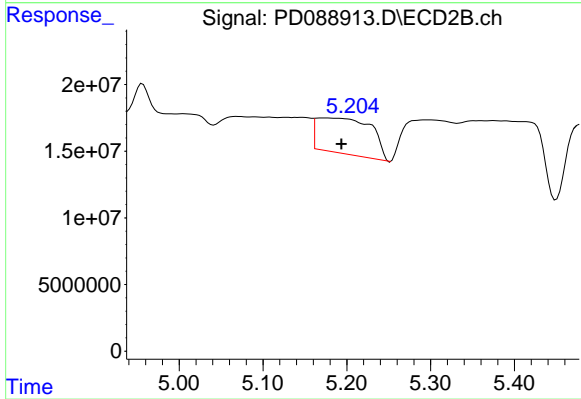
#10 gamma-Chlordane

R.T.: 5.127 min
 Delta R.T.: -0.002 min
 Response: 19210497
 Conc: 0.90 ng/ml



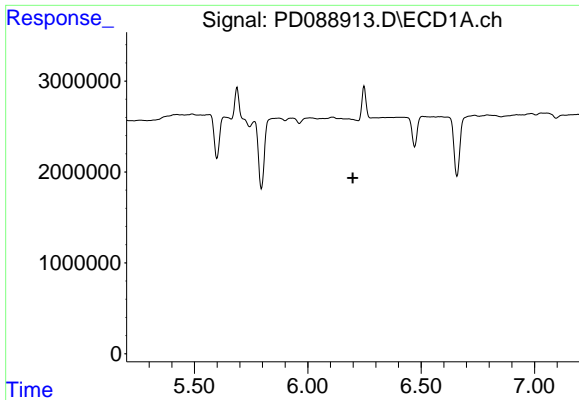
#11 alpha-Chlordane

R.T.: 6.011 min
 Delta R.T.: -0.019 min
 Response: 1730642
 Conc: 0.43 ng/ml



#11 alpha-Chlordane

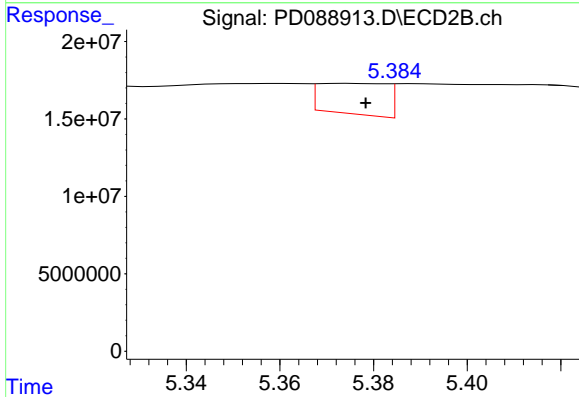
R.T.: 5.174 min
 Delta R.T.: -0.020 min
 Response: 120921593
 Conc: 5.86 ng/ml



#12 4,4'-DDE

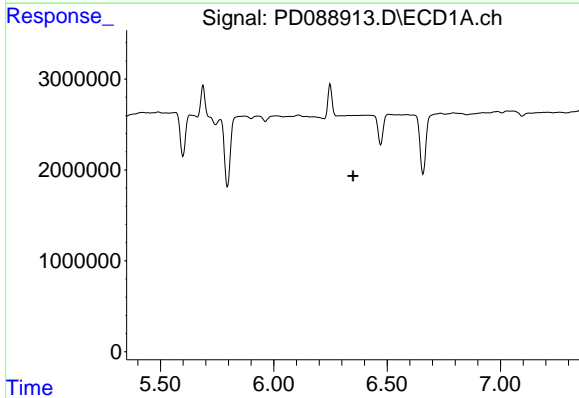
R.T.: 0.000 min
 Exp R.T.: 6.198 min
 Response: 0
 Conc: N.D.

Instrument :
 ECD_D
 ClientSampleId :



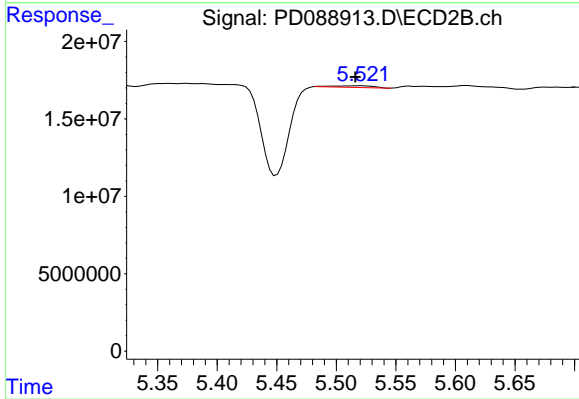
#12 4,4'-DDE

R.T.: 5.375 min
 Delta R.T.: -0.003 min
 Response: 20076140
 Conc: 0.96 ng/ml



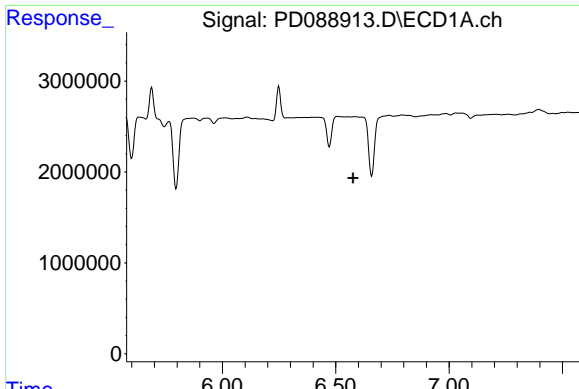
#13 Dieldrin

R.T.: 0.000 min
 Exp R.T.: 6.350 min
 Response: 0
 Conc: N.D.



#13 Dieldrin

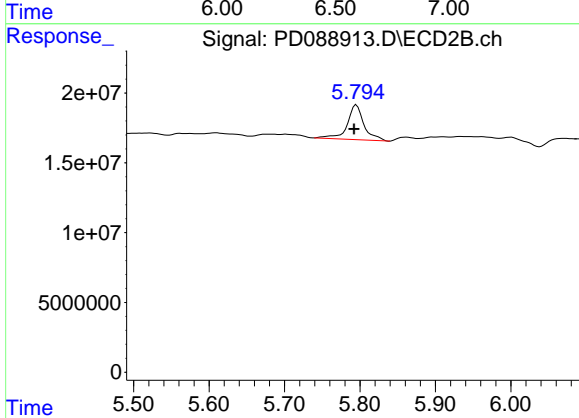
R.T.: 5.521 min
 Delta R.T.: 0.005 min
 Response: 2555659
 Conc: 0.12 ng/ml



#14 Endrin

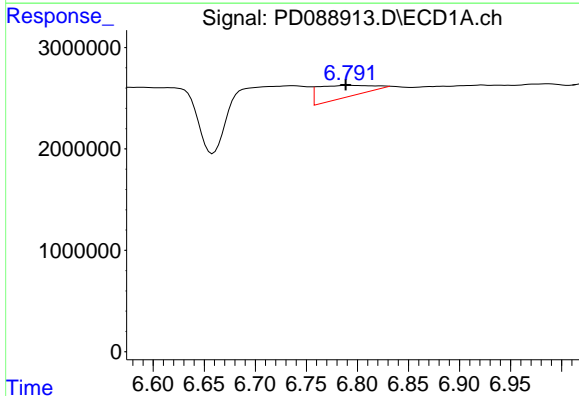
R.T.: 0.000 min
 Exp R.T.: 6.577 min
 Response: 0
 Conc: N.D.

Instrument :
 ECD_D
 ClientSampleId :



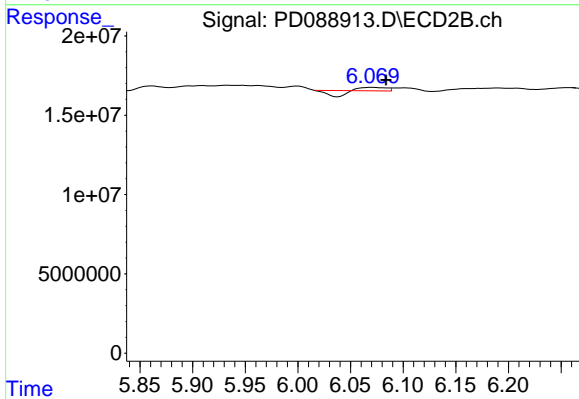
#14 Endrin

R.T.: 5.795 min
 Delta R.T.: 0.003 min
 Response: 38550856
 Conc: 2.00 ng/ml



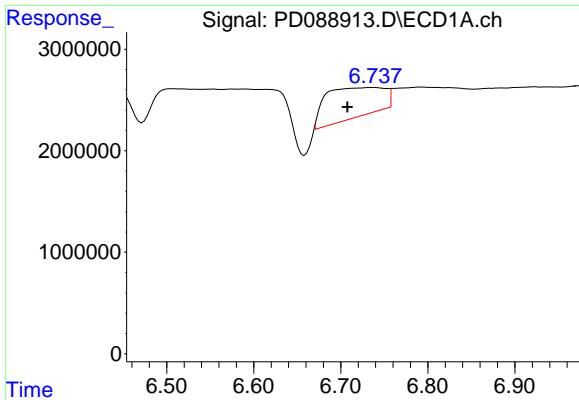
#15 Endosulfan II

R.T.: 6.792 min
 Delta R.T.: 0.004 min
 Response: 4628637
 Conc: 1.34 ng/ml



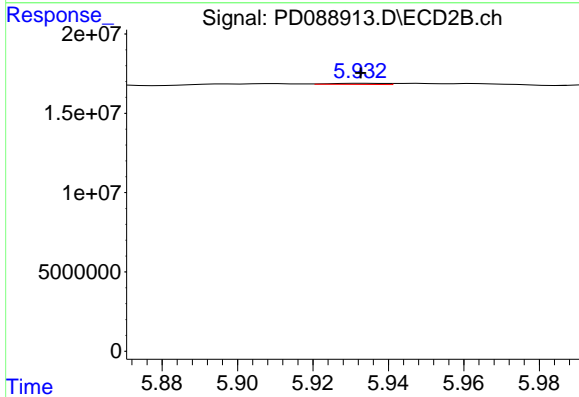
#15 Endosulfan II

R.T.: 6.070 min
 Delta R.T.: -0.013 min
 Response: 292347
 Conc: 0.02 ng/ml

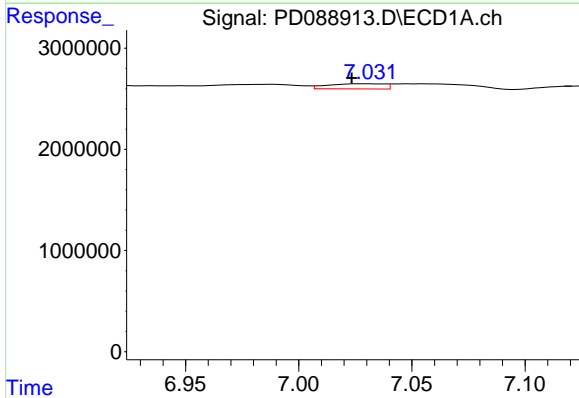


#16 4,4'-DDD
 R.T.: 6.738 min
 Delta R.T.: 0.030 min
 Response: 13576574
 Conc: 4.87 ng/ml

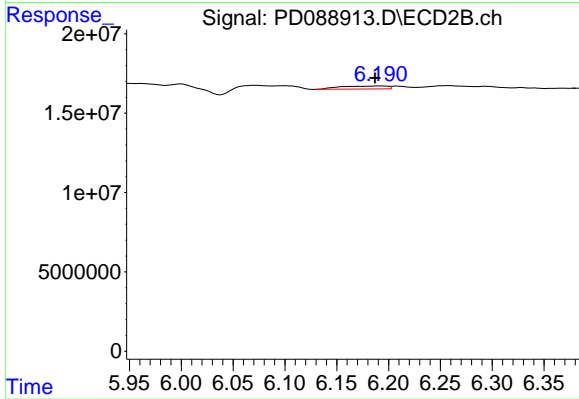
Instrument :
 ECD_D
 ClientSampleId :



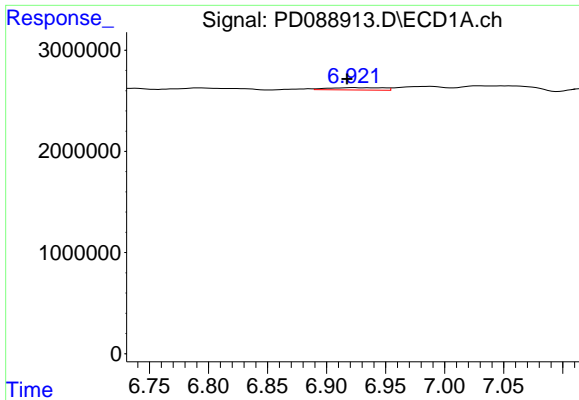
#16 4,4'-DDD
 R.T.: 5.933 min
 Delta R.T.: 0.000 min
 Response: 651124
 Conc: 0.04 ng/ml



#17 4,4'-DDT
 R.T.: 7.031 min
 Delta R.T.: 0.007 min
 Response: 873994
 Conc: 0.28 ng/ml



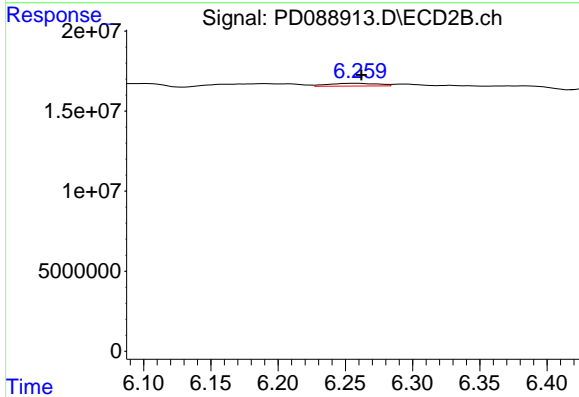
#17 4,4'-DDT
 R.T.: 6.191 min
 Delta R.T.: 0.004 min
 Response: 5931454
 Conc: 0.33 ng/ml



#18 Endrin aldehyde

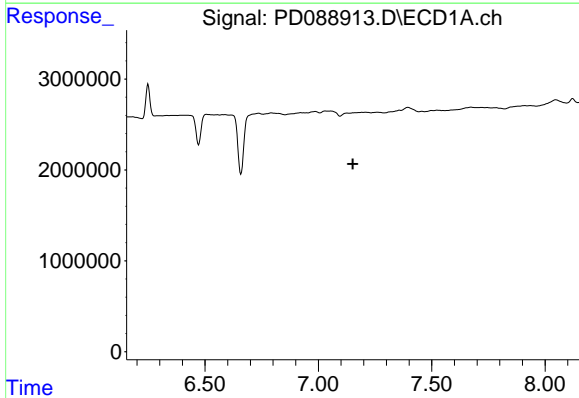
R.T.: 6.923 min
 Delta R.T.: 0.005 min
 Response: 757200
 Conc: 0.29 ng/ml

Instrument :
 ECD_D
 ClientSampleId :



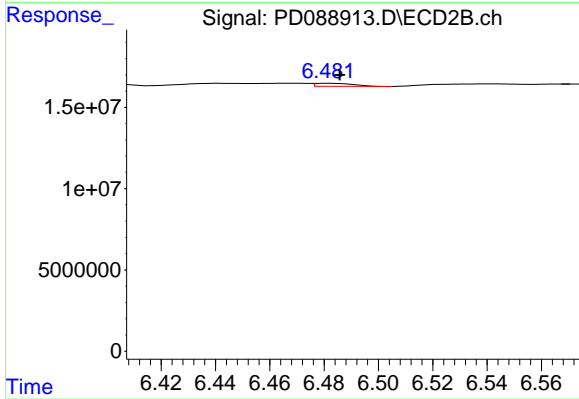
#18 Endrin aldehyde

R.T.: 6.259 min
 Delta R.T.: -0.003 min
 Response: 4386839
 Conc: 0.31 ng/ml



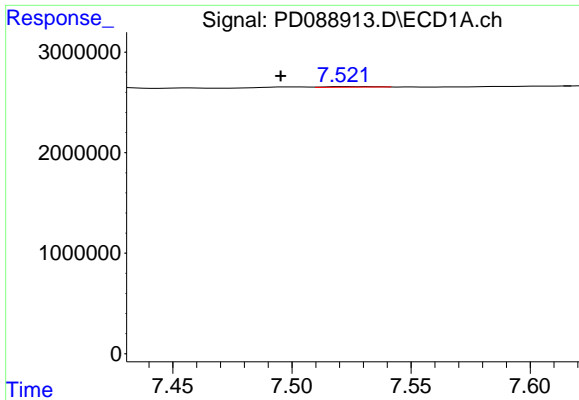
#19 Endosulfan Sulfate

R.T.: 0.000 min
 Exp R.T. : 7.152 min
 Response: 0
 Conc: N.D.



#19 Endosulfan Sulfate

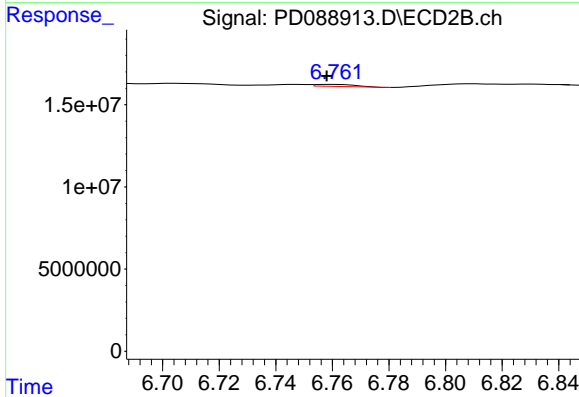
R.T.: 6.481 min
 Delta R.T.: -0.005 min
 Response: 1838934
 Conc: 0.10 ng/ml



#20 Methoxychlor

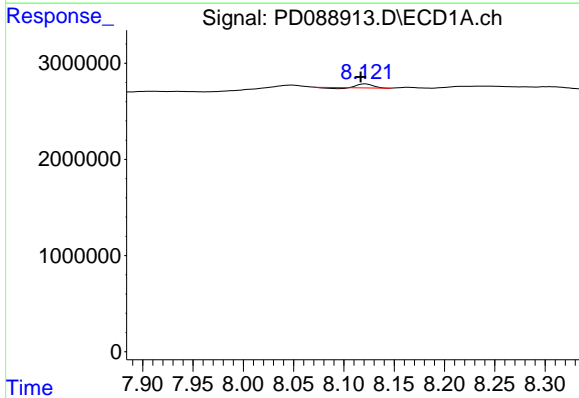
R.T.: 7.523 min
 Delta R.T.: 0.028 min
 Response: 80638
 Conc: 0.05 ng/ml

Instrument :
 ECD_D
 ClientSampleId :



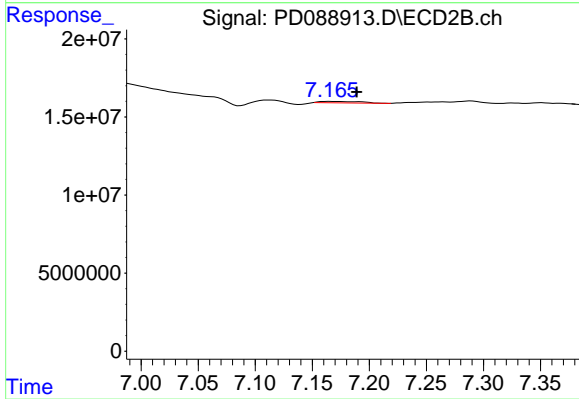
#20 Methoxychlor

R.T.: 6.761 min
 Delta R.T.: 0.003 min
 Response: 1278140
 Conc: 0.13 ng/ml



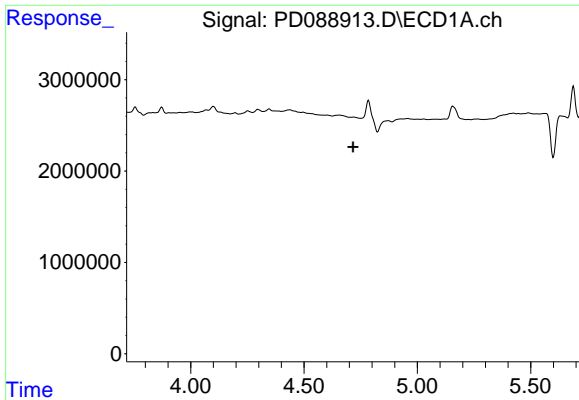
#22 Mirex

R.T.: 8.122 min
 Delta R.T.: 0.005 min
 Response: 365045
 Conc: 0.14 ng/ml



#22 Mirex

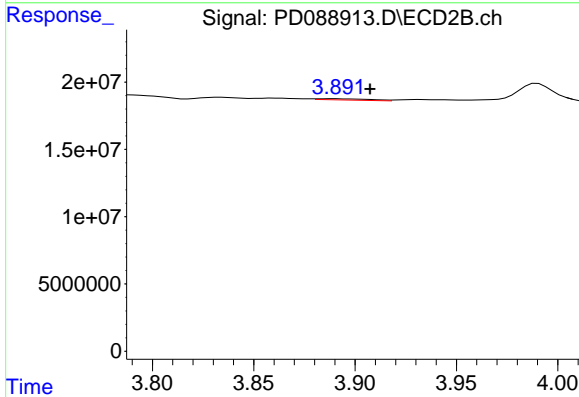
R.T.: 7.167 min
 Delta R.T.: -0.022 min
 Response: 2212806
 Conc: 0.15 ng/ml



#23 Chlordane-1

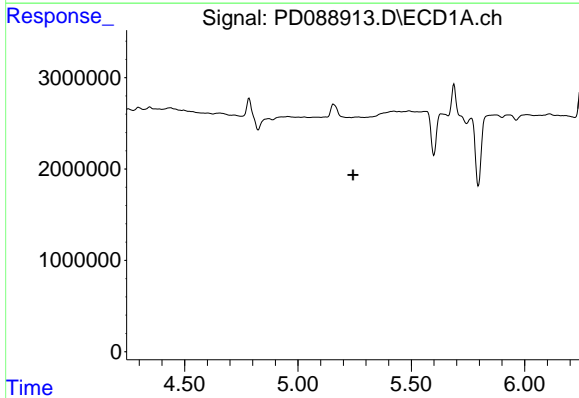
R.T.: 0.000 min
 Exp R.T. : 4.717 min
 Response: 0
 Conc: N.D.

Instrument :
 ECD_D
 ClientSampleId :



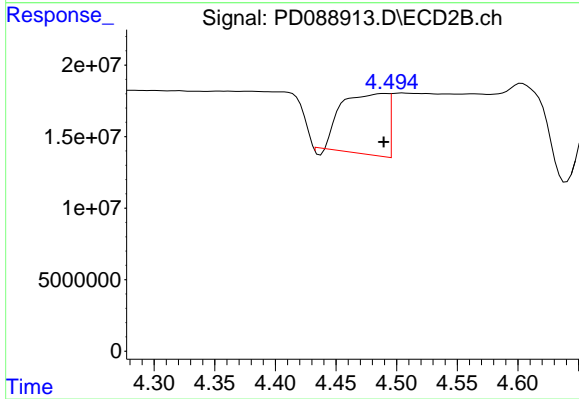
#23 Chlordane-1

R.T.: 3.890 min
 Delta R.T.: -0.018 min
 Response: 1714402
 Conc: 2.07 ng/ml



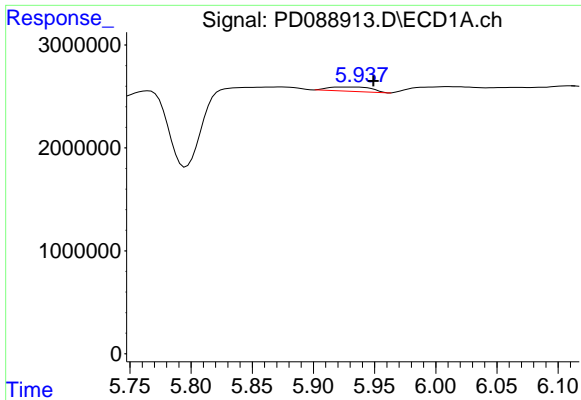
#24 Chlordane-2

R.T.: 0.000 min
 Exp R.T. : 5.244 min
 Response: 0
 Conc: N.D.



#24 Chlordane-2

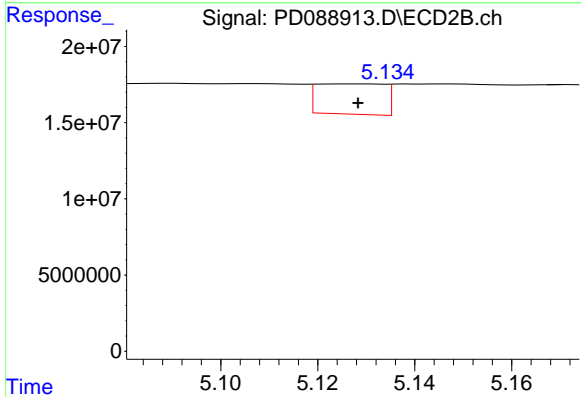
R.T.: 4.491 min
 Delta R.T.: 0.002 min
 Response: 110439842
 Conc: 130.85 ng/ml



#25 Chlordane-3

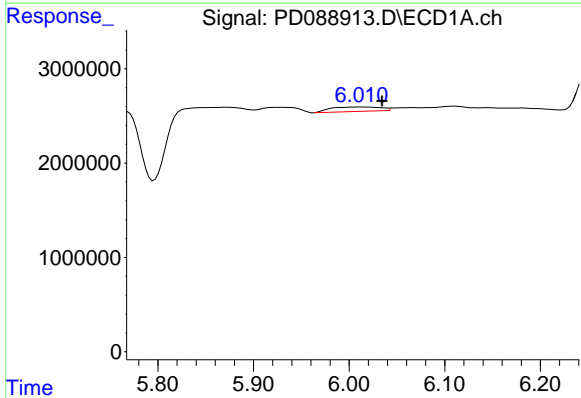
R.T.: 5.932 min
 Delta R.T.: -0.017 min
 Response: 1043633
 Conc: 1.41 ng/ml

Instrument :
 ECD_D
 ClientSampleId :



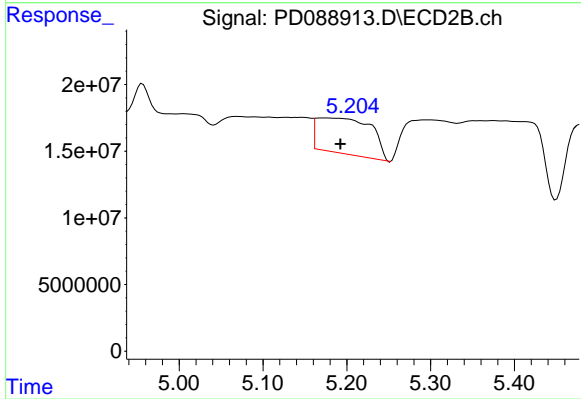
#25 Chlordane-3

R.T.: 5.127 min
 Delta R.T.: -0.002 min
 Response: 19210497
 Conc: 7.29 ng/ml



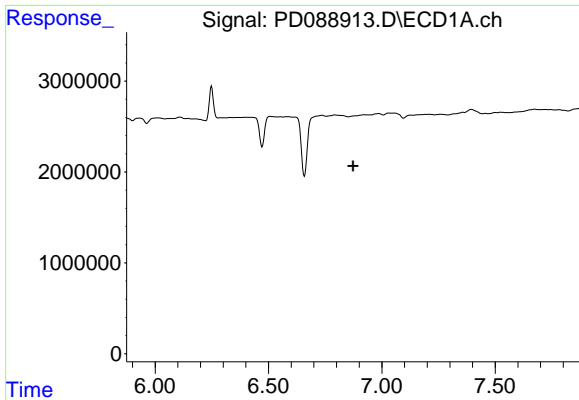
#26 Chlordane-4

R.T.: 6.011 min
 Delta R.T.: -0.023 min
 Response: 1730642
 Conc: 1.93 ng/ml



#26 Chlordane-4

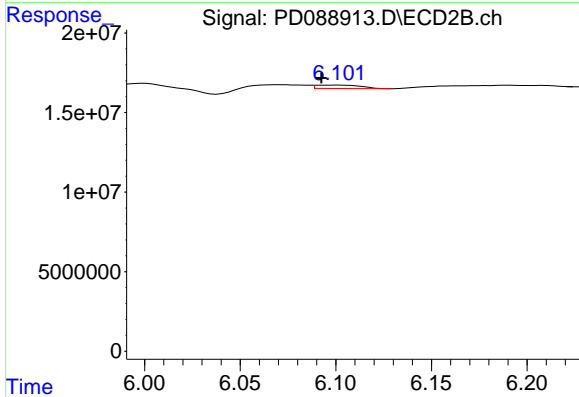
R.T.: 5.174 min
 Delta R.T.: -0.019 min
 Response: 120921593
 Conc: 54.65 ng/ml



#27 Chlordane-5

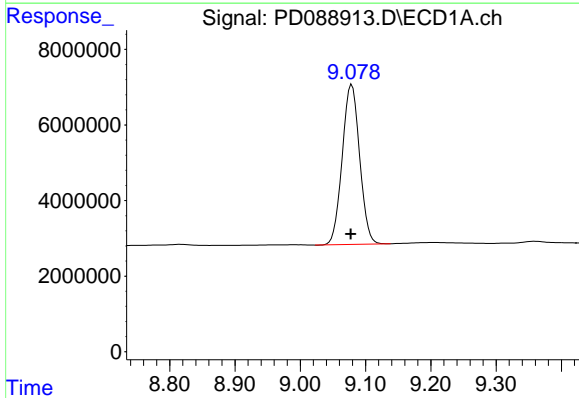
R.T.: 0.000 min
 Exp R.T.: 6.873 min
 Response: 0
 Conc: N.D.

Instrument :
 ECD_D
 ClientSampleId :



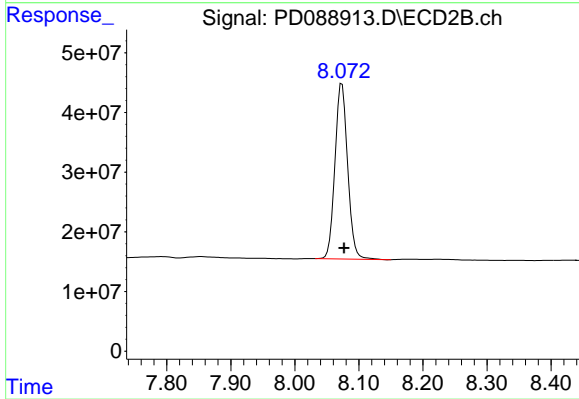
#27 Chlordane-5

R.T.: 6.102 min
 Delta R.T.: 0.009 min
 Response: 3449036
 Conc: 3.45 ng/ml



#28 Decachlorobiphenyl

R.T.: 9.079 min
 Delta R.T.: 0.002 min
 Response: 78342234
 Conc: 22.89 ng/ml



#28 Decachlorobiphenyl

R.T.: 8.074 min
 Delta R.T.: -0.003 min
 Response: 404799011
 Conc: 22.17 ng/ml