

Data Path : Z:\pestpcbsrv\HPCHEM1\ECD_D\Data\PD061125\
 Data File : PD088926.D
 Signal(s) : Signal #1: ECD1A.ch Signal #2: ECD2B.ch
 Acq On : 11 Jun 2025 16:21
 Operator : AR\AJ
 Sample : I.BLK
 Misc :
 ALS Vial : 2 Sample Multiplier: 1

Instrument :
 ECD_D
 ClientSampleId :
 I.BLK

Integration File signal 1: autoint1.e
 Integration File signal 2: autoint2.e
 Quant Time: Jun 12 07:41:42 2025
 Quant Method : Z:\pestpcbsrv\HPCHEM1\ECD_D\Method\PD051925.M
 Quant Title : GC Extractables
 QLast Update : Mon May 19 15:27:28 2025
 Response via : Initial Calibration
 Integrator: ChemStation

Volume Inj. : 1 µl
 Signal #1 Phase : ZB-MR2 Signal #2 Phase: ZB-MR2
 Signal #1 Info : 30M x 0.32mm x0.5 Signal #2 Info : 30M x 0.32mm x 0.25µm

	Compound	RT#1	RT#2	Resp#1	Resp#2	ng/ml	ng/ml

System Monitoring Compounds							
1)	SA Tetrachlo...	3.548	2.879	45546253	317.1E6	21.050	20.964
28)	SA Decachlor...	9.071	8.072	64717260	262.4E6	18.910	14.371
Target Compounds							
2)	A alpha-BHC	0.000	3.380	0	922718	N.D.	0.039 #
3)	MA gamma-BHC...	4.338	3.718	472050	1012503	0.103	0.046 #
5)	MB Aldrin	5.262	0.000	64253	0	0.015	N.D. #
6)	B beta-BHC	0.000	4.044f	0	4221783	N.D.	0.433 #
7)	B delta-BHC	4.777	0.000	2653993	0	0.628	N.D. #
8)	B Heptachlo...	5.680	4.869	2686294	2611638	0.677	0.131 #
9)	A Endosulfan I	6.105f	5.227f	527238	20608434	0.140	1.086 #
10)	B gamma-Chl...	5.929f	5.119	624816	32151671	0.157	1.507 #
11)	B alpha-Chl...	6.014f	5.191	1346711	41435574	0.336	2.009 #
12)	B 4,4'-DDE	0.000	5.383	0	91622899	N.D.	4.383 #
13)	MA Dieldrin	0.000	5.529	0	291140	N.D.	0.014 #
14)	MA Endrin	0.000	5.794	0	31555777	N.D.	1.636 #
15)	B Endosulfa...	6.778	6.079	260180	1735349	0.076	0.095 #
16)	A 4,4'-DDD	6.689f	5.926	780369	887338	0.280	0.051 #
17)	MA 4,4'-DDT	7.028	6.160f	739490	4836729	0.237	0.267
18)	B Endrin al...	6.923	6.260	686183	5007399	0.267	0.360 #
19)	B Endosulfa...	7.150	6.484	127876	974288	0.040	0.055 #
20)	A Methoxychlor	0.000	6.730f	0	594106	N.D.	0.062 #
22)	Mirex	0.000	7.193	0	834485	N.D.	0.055 #
23)	Chlordane-1	0.000	3.893	0	2033660	N.D.	2.461 #
24)	Chlordane-2	5.241	4.504	312895	153.5E6	1.705	181.906 #
25)	Chlordane-3	5.929	5.119	624816	32151671	0.844	12.193 #
26)	Chlordane-4	6.014	5.191	1346711	41435574	1.503	18.728 #
27)	Chlordane-5	6.883	6.096	513979	5906720	3.378	5.902 #

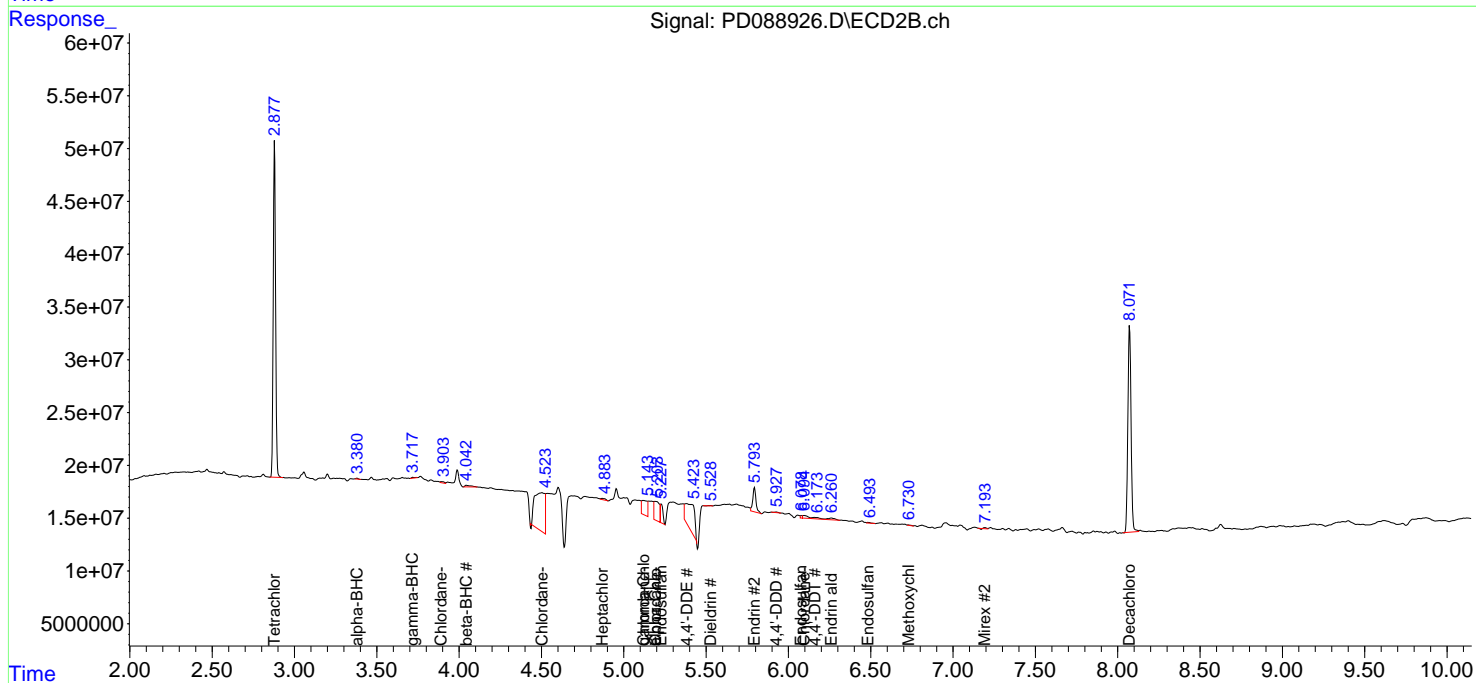
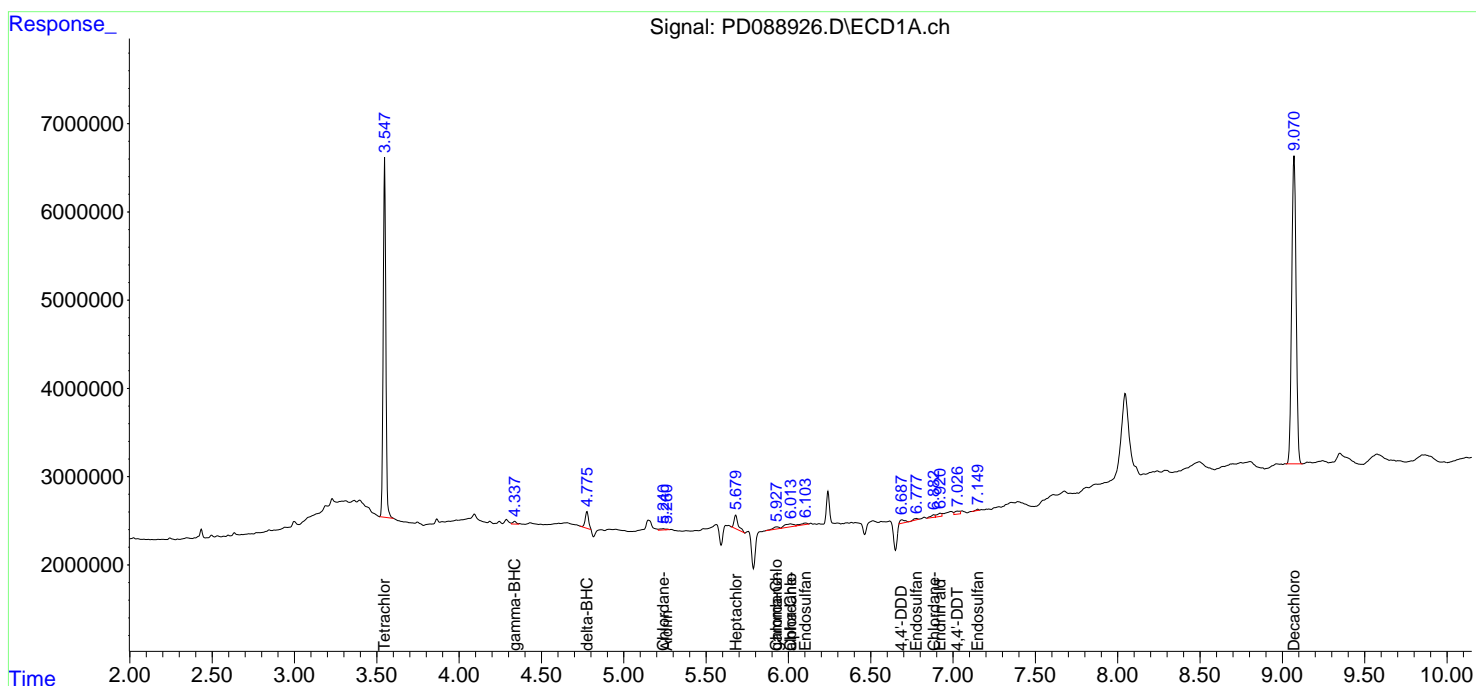
(f)=RT Delta > 1/2 Window (#)=Amounts differ by > 25% (m)=manual int.

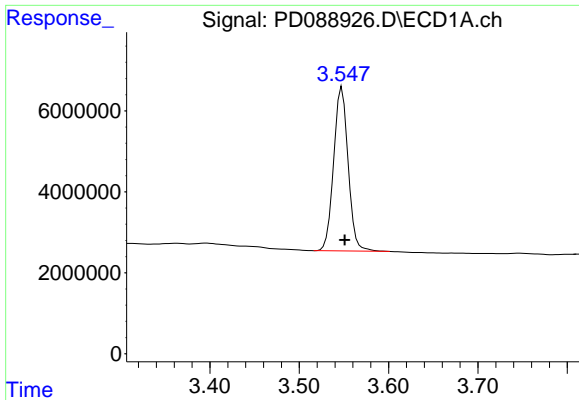
Data Path : Z:\pestpcbsrv\HPCHEM1\ECD_D\Data\PD061125\
 Data File : PD088926.D
 Signal(s) : Signal #1: ECD1A.ch Signal #2: ECD2B.ch
 Acq On : 11 Jun 2025 16:21
 Operator : AR\AJ
 Sample : I.BLK
 Misc :
 ALS Vial : 2 Sample Multiplier: 1

Instrument :
 ECD_D
 ClientSampleId :
 I.BLK

Integration File signal 1: autoint1.e
 Integration File signal 2: autoint2.e
 Quant Time: Jun 12 07:41:42 2025
 Quant Method : Z:\pestpcbsrv\HPCHEM1\ECD_D\Method\PD051925.M
 Quant Title : GC Extractables
 QLast Update : Mon May 19 15:27:28 2025
 Response via : Initial Calibration
 Integrator: ChemStation

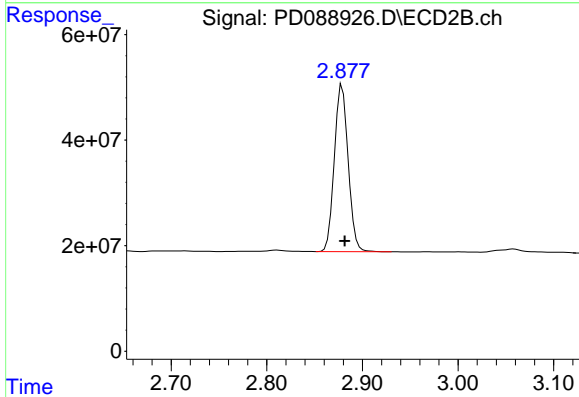
Volume Inj. : 1 µl
 Signal #1 Phase : ZB-MR1 Signal #2 Phase: ZB-MR2
 Signal #1 Info : 30M x 0.32mm x0.5 Signal #2 Info : 30M x 0.32mm x 0.25µm



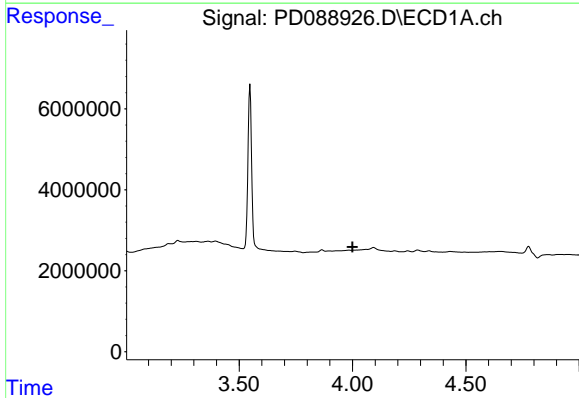


#1 Tetrachloro-m-xylene
 R.T.: 3.548 min
 Delta R.T.: -0.003 min
 Response: 45546253
 Conc: 21.05 ng/ml

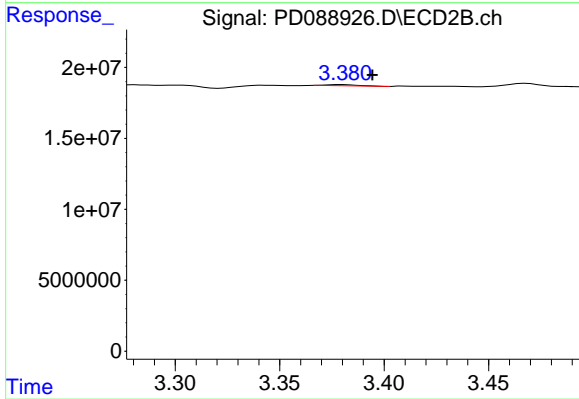
Instrument :
 ECD_D
 ClientSampleId :
 I.BLK



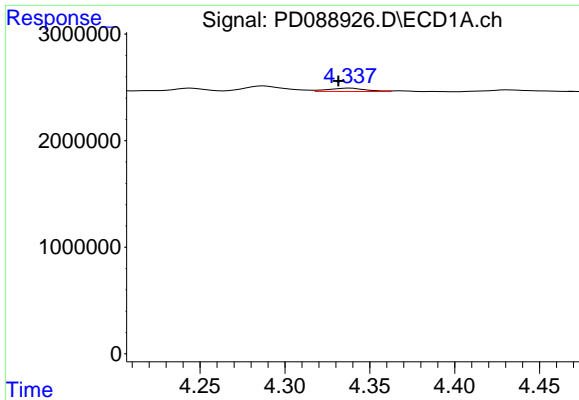
#1 Tetrachloro-m-xylene
 R.T.: 2.879 min
 Delta R.T.: -0.003 min
 Response: 317115656
 Conc: 20.96 ng/ml



#2 alpha-BHC
 R.T.: 0.000 min
 Exp R.T. : 4.000 min
 Response: 0
 Conc: N.D.

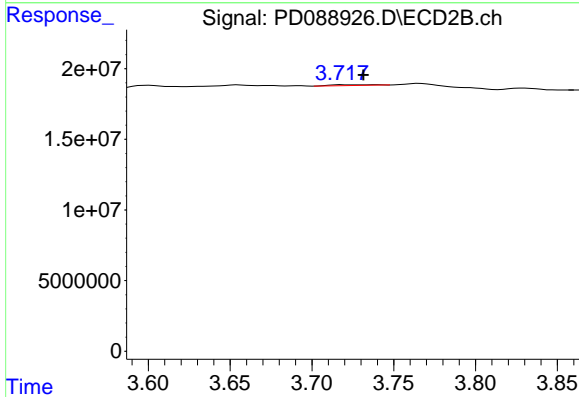


#2 alpha-BHC
 R.T.: 3.380 min
 Delta R.T.: -0.015 min
 Response: 922718
 Conc: 0.04 ng/ml

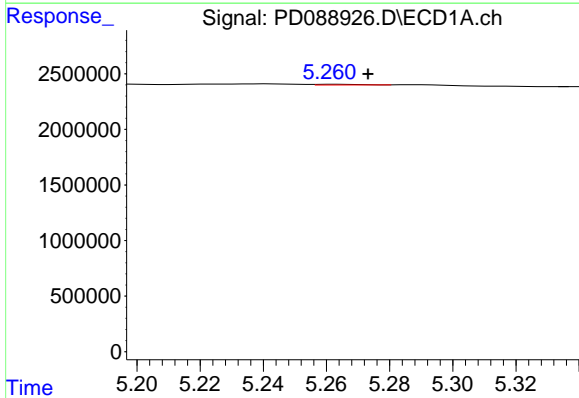


#3 gamma-BHC (Lindane)
 R.T.: 4.338 min
 Delta R.T.: 0.007 min
 Response: 472050
 Conc: 0.10 ng/ml

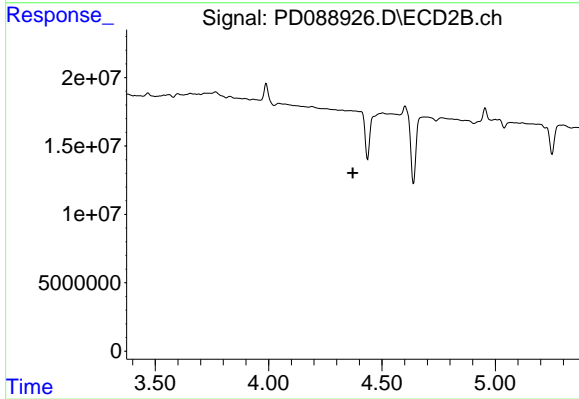
Instrument :
 ECD_D
 ClientSampleId :
 I.BLK



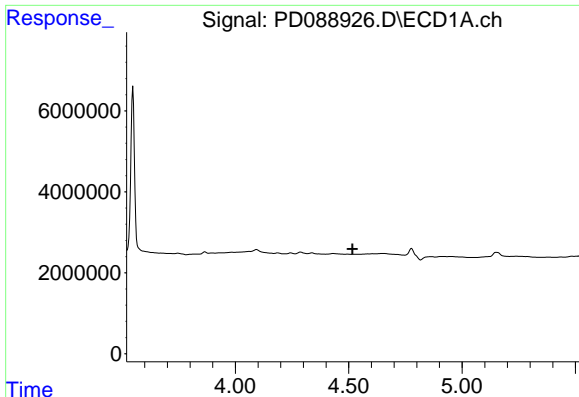
#3 gamma-BHC (Lindane)
 R.T.: 3.718 min
 Delta R.T.: -0.013 min
 Response: 1012503
 Conc: 0.05 ng/ml



#5 Aldrin
 R.T.: 5.262 min
 Delta R.T.: -0.011 min
 Response: 64253
 Conc: 0.01 ng/ml



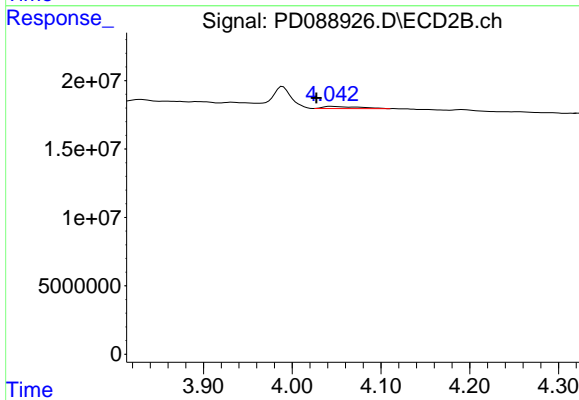
#5 Aldrin
 R.T.: 0.000 min
 Exp R.T.: 4.371 min
 Response: 0
 Conc: N.D.



#6 beta-BHC

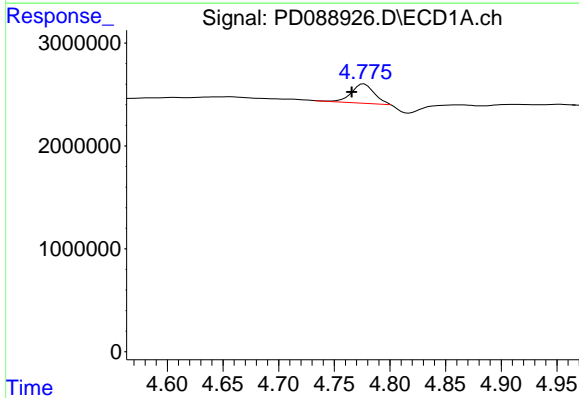
R.T.: 0.000 min
 Exp R.T.: 4.517 min
 Response: 0
 Conc: N.D.

Instrument :
 ECD_D
 ClientSampleId :
 I.BLK



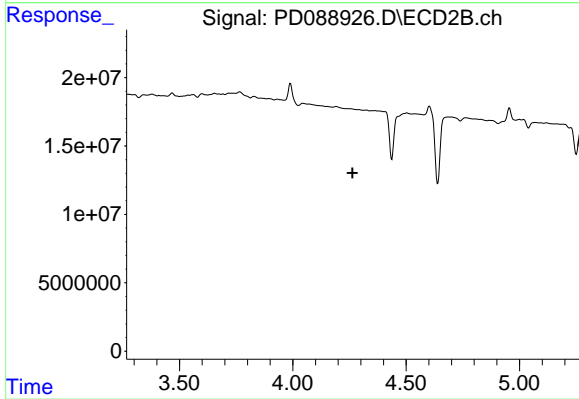
#6 beta-BHC

R.T.: 4.044 min
 Delta R.T.: 0.016 min
 Response: 4221783
 Conc: 0.43 ng/ml



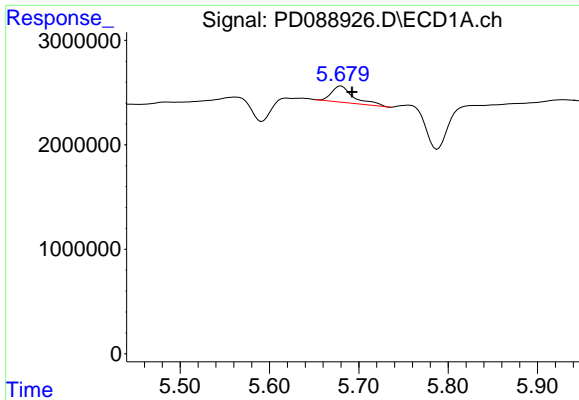
#7 delta-BHC

R.T.: 4.777 min
 Delta R.T.: 0.011 min
 Response: 2653993
 Conc: 0.63 ng/ml



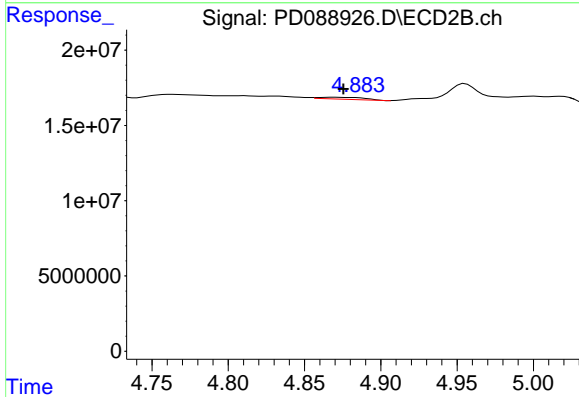
#7 delta-BHC

R.T.: 0.000 min
 Exp R.T.: 4.264 min
 Response: 0
 Conc: N.D.

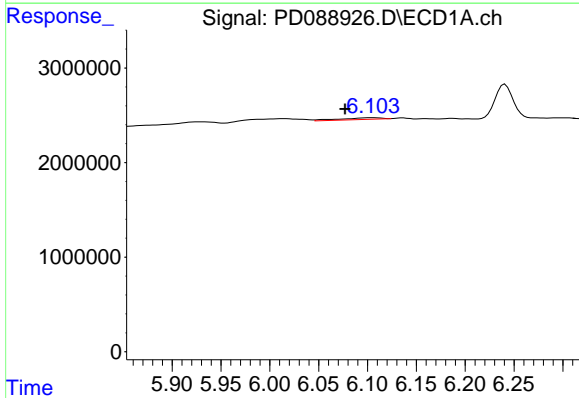


#8 Heptachlor epoxide
 R.T.: 5.680 min
 Delta R.T.: -0.012 min
 Response: 2686294
 Conc: 0.68 ng/ml

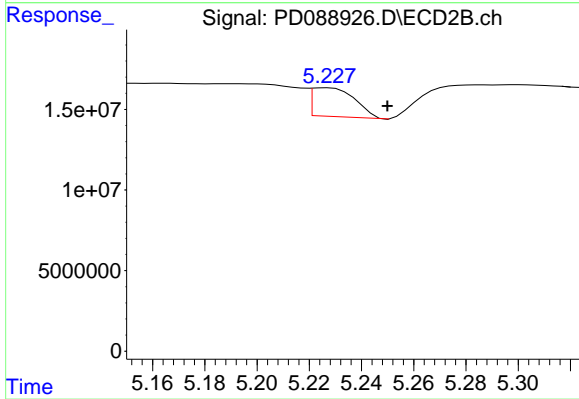
Instrument :
 ECD_D
 ClientSampleId :
 I.BLK



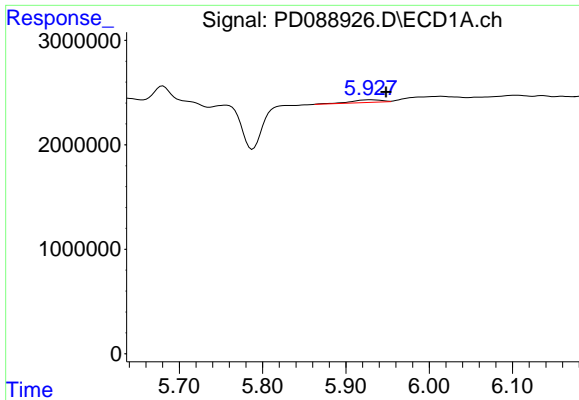
#8 Heptachlor epoxide
 R.T.: 4.869 min
 Delta R.T.: -0.006 min
 Response: 2611638
 Conc: 0.13 ng/ml



#9 Endosulfan I
 R.T.: 6.105 min
 Delta R.T.: 0.028 min
 Response: 527238
 Conc: 0.14 ng/ml



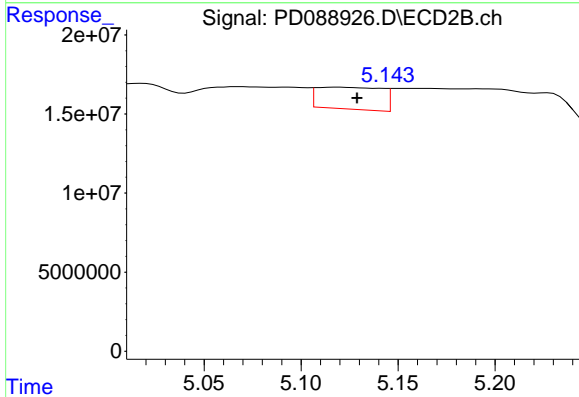
#9 Endosulfan I
 R.T.: 5.227 min
 Delta R.T.: -0.023 min
 Response: 20608434
 Conc: 1.09 ng/ml



#10 gamma-Chlordane

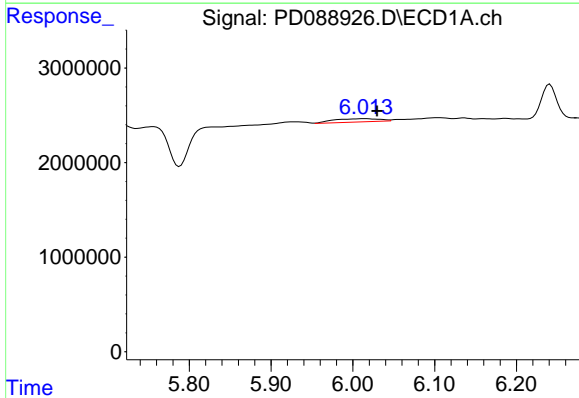
R.T.: 5.929 min
 Delta R.T.: -0.020 min
 Response: 624816
 Conc: 0.16 ng/ml

Instrument :
 ECD_D
 ClientSampleId :
 I.BLK



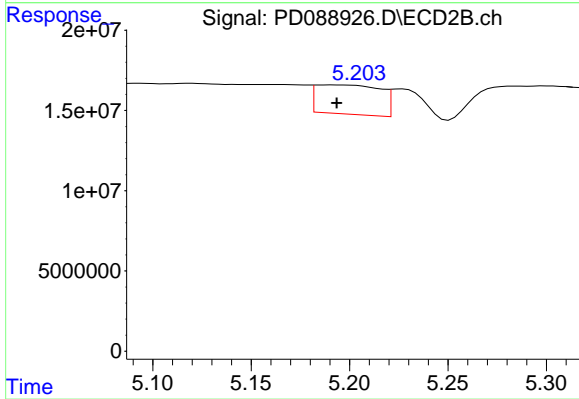
#10 gamma-Chlordane

R.T.: 5.119 min
 Delta R.T.: -0.009 min
 Response: 32151671
 Conc: 1.51 ng/ml



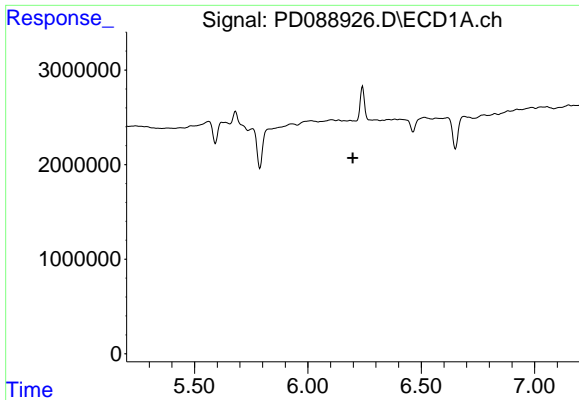
#11 alpha-Chlordane

R.T.: 6.014 min
 Delta R.T.: -0.016 min
 Response: 1346711
 Conc: 0.34 ng/ml



#11 alpha-Chlordane

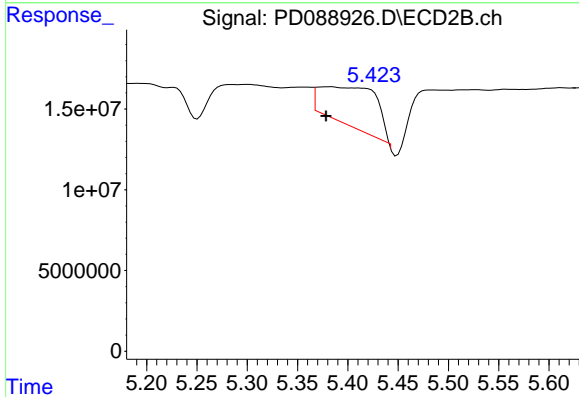
R.T.: 5.191 min
 Delta R.T.: -0.002 min
 Response: 41435574
 Conc: 2.01 ng/ml



#12 4,4'-DDE

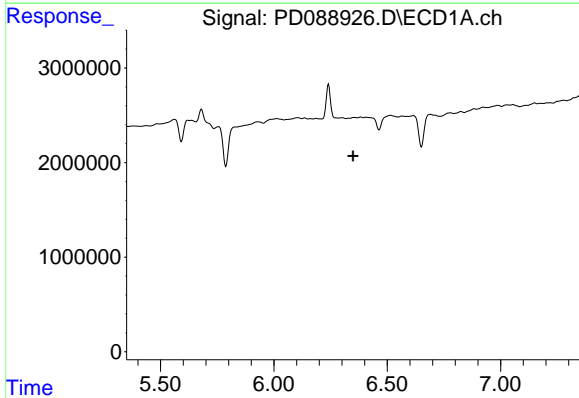
R.T.: 0.000 min
 Exp R.T.: 6.198 min
 Response: 0
 Conc: N.D.

Instrument :
 ECD_D
 ClientSampleId :
 I.BLK



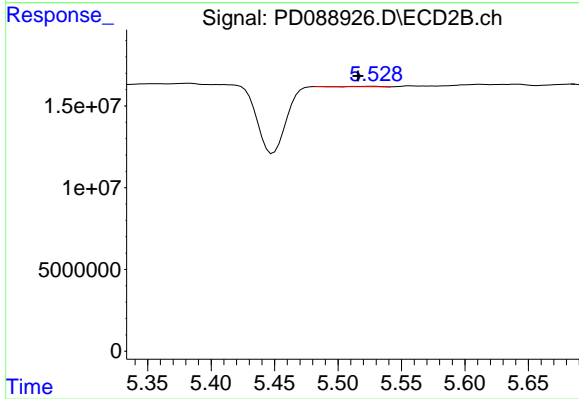
#12 4,4'-DDE

R.T.: 5.383 min
 Delta R.T.: 0.005 min
 Response: 91622899
 Conc: 4.38 ng/ml



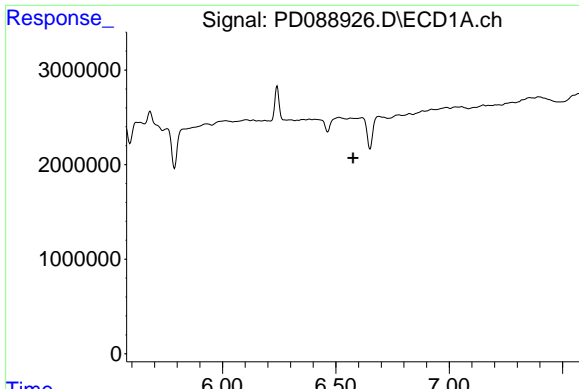
#13 Dieldrin

R.T.: 0.000 min
 Exp R.T.: 6.350 min
 Response: 0
 Conc: N.D.



#13 Dieldrin

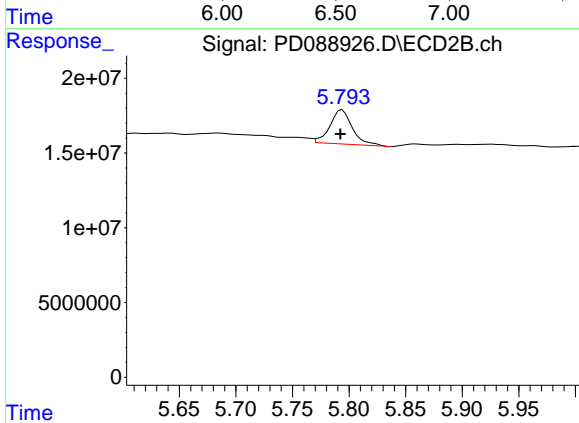
R.T.: 5.529 min
 Delta R.T.: 0.013 min
 Response: 291140
 Conc: 0.01 ng/ml



#14 Endrin

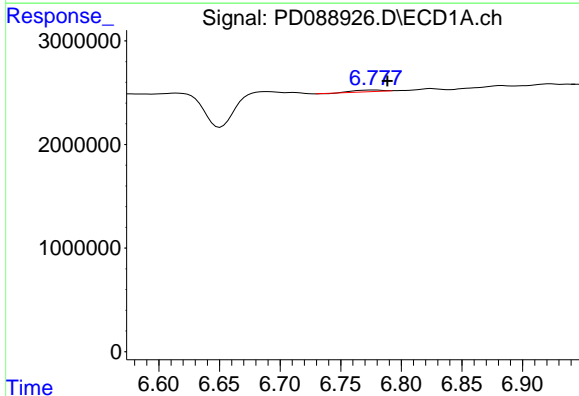
R.T.: 0.000 min
 Exp R.T.: 6.577 min
 Response: 0
 Conc: N.D.

Instrument :
 ECD_D
 ClientSampleId :
 I.BLK



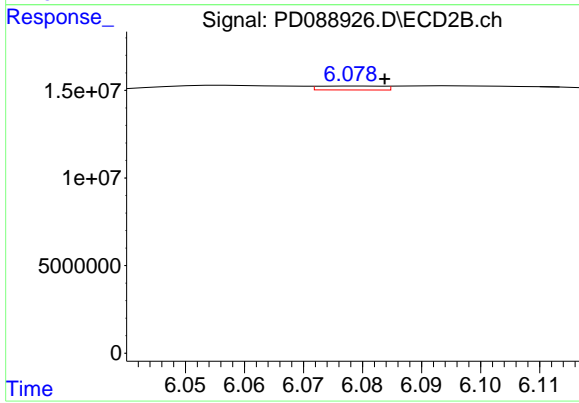
#14 Endrin

R.T.: 5.794 min
 Delta R.T.: 0.002 min
 Response: 3155777
 Conc: 1.64 ng/ml



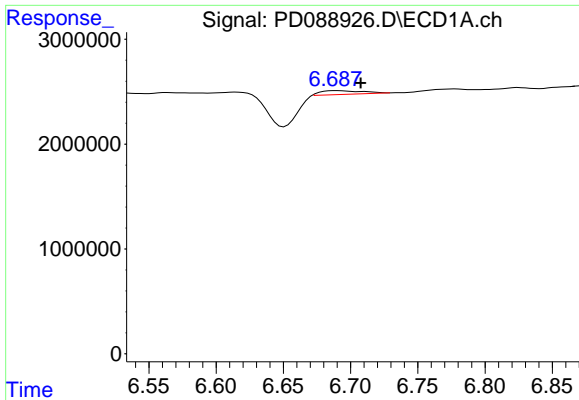
#15 Endosulfan II

R.T.: 6.778 min
 Delta R.T.: -0.010 min
 Response: 260180
 Conc: 0.08 ng/ml



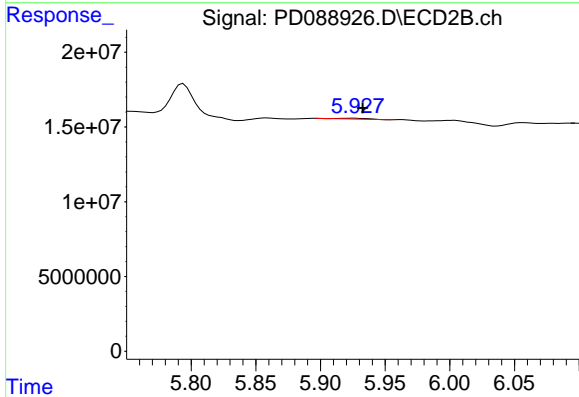
#15 Endosulfan II

R.T.: 6.079 min
 Delta R.T.: -0.005 min
 Response: 1735349
 Conc: 0.09 ng/ml

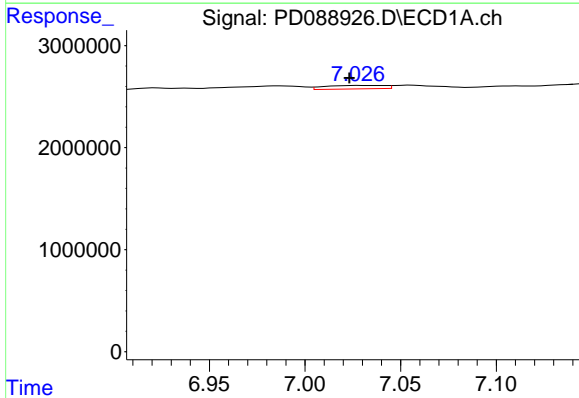


#16 4,4'-DDD
 R.T.: 6.689 min
 Delta R.T.: -0.018 min
 Response: 780369
 Conc: 0.28 ng/ml

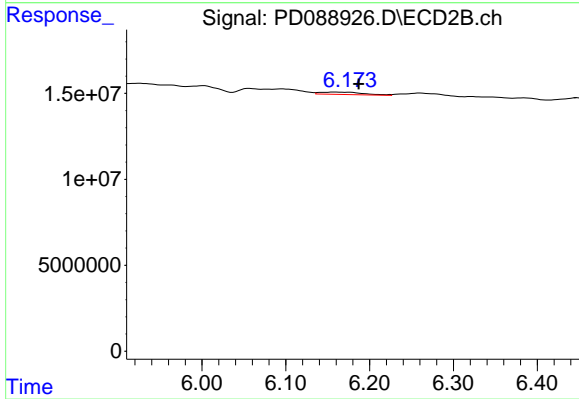
Instrument : ECD_D
 ClientSampleId : I.BLK



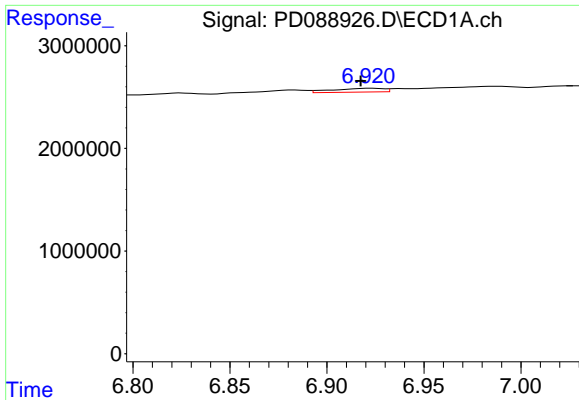
#16 4,4'-DDD
 R.T.: 5.926 min
 Delta R.T.: -0.007 min
 Response: 887338
 Conc: 0.05 ng/ml



#17 4,4'-DDT
 R.T.: 7.028 min
 Delta R.T.: 0.004 min
 Response: 739490
 Conc: 0.24 ng/ml



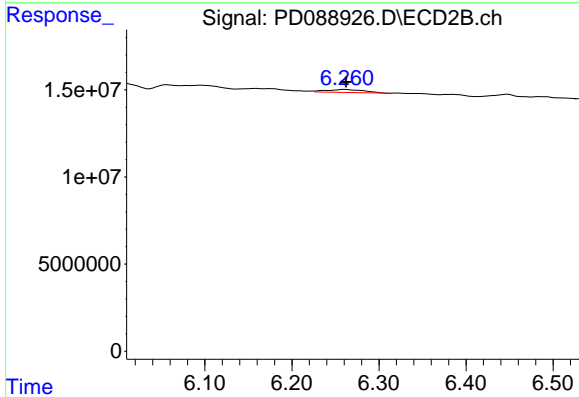
#17 4,4'-DDT
 R.T.: 6.160 min
 Delta R.T.: -0.027 min
 Response: 4836729
 Conc: 0.27 ng/ml



#18 Endrin aldehyde

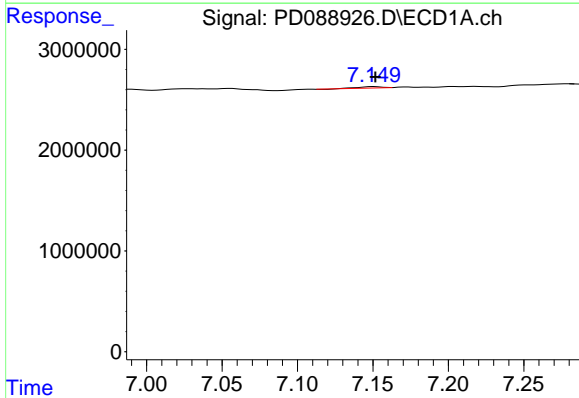
R.T.: 6.923 min
 Delta R.T.: 0.005 min
 Response: 686183
 Conc: 0.27 ng/ml

Instrument :
 ECD_D
 ClientSampleId :
 I.BLK



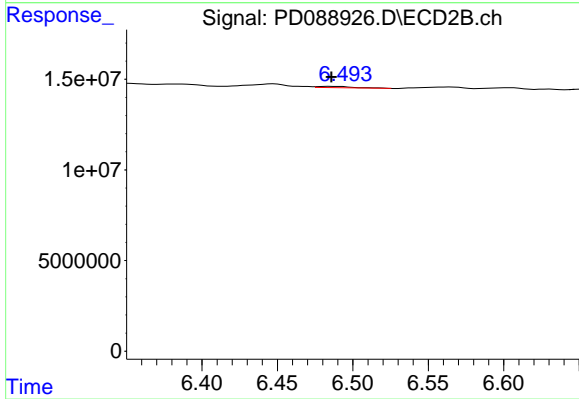
#18 Endrin aldehyde

R.T.: 6.260 min
 Delta R.T.: -0.002 min
 Response: 5007399
 Conc: 0.36 ng/ml



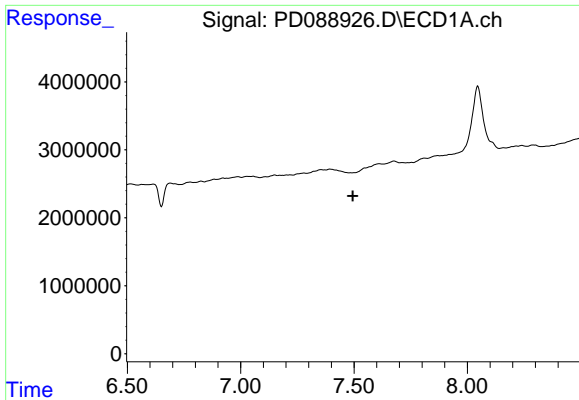
#19 Endosulfan Sulfate

R.T.: 7.150 min
 Delta R.T.: -0.001 min
 Response: 127876
 Conc: 0.04 ng/ml



#19 Endosulfan Sulfate

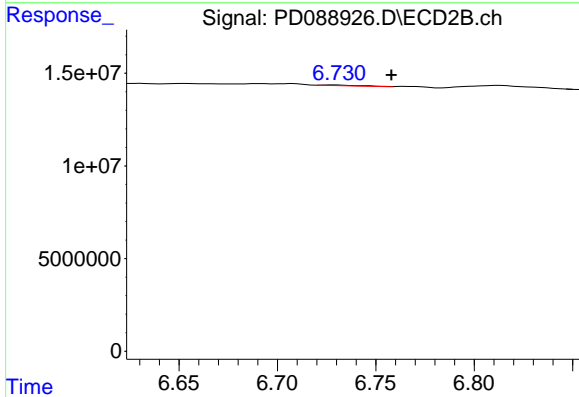
R.T.: 6.484 min
 Delta R.T.: -0.002 min
 Response: 974288
 Conc: 0.05 ng/ml



#20 Methoxychlor

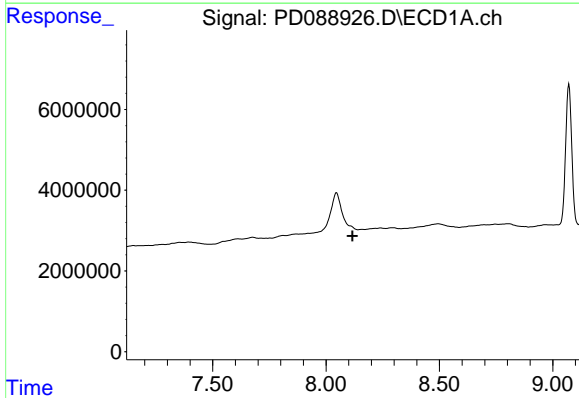
R.T.: 0.000 min
 Exp R.T. : 7.495 min
 Response: 0
 Conc: N.D.

Instrument :
 ECD_D
 ClientSampleId :
 I.BLK



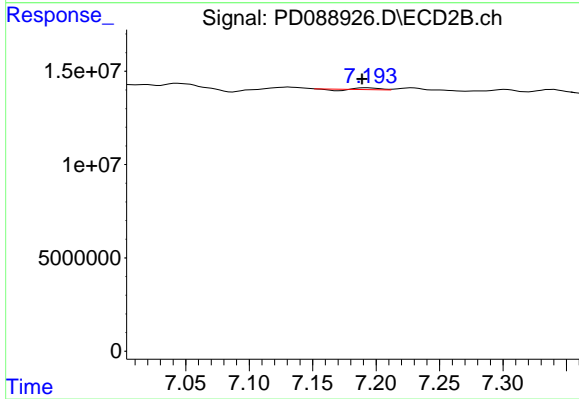
#20 Methoxychlor

R.T.: 6.730 min
 Delta R.T.: -0.028 min
 Response: 594106
 Conc: 0.06 ng/ml



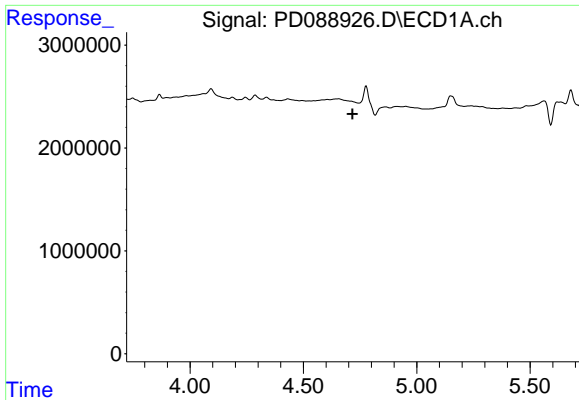
#22 Mirex

R.T.: 0.000 min
 Exp R.T. : 8.117 min
 Response: 0
 Conc: N.D.



#22 Mirex

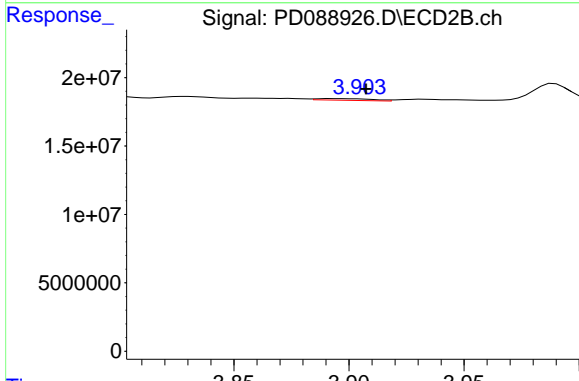
R.T.: 7.193 min
 Delta R.T.: 0.004 min
 Response: 834485
 Conc: 0.05 ng/ml



#23 Chlordane-1

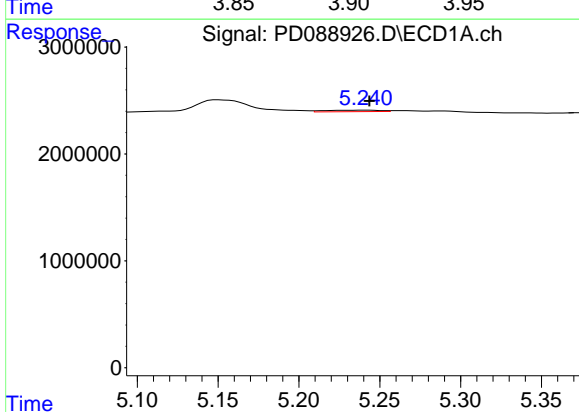
R.T.: 0.000 min
 Exp R.T.: 4.717 min
 Response: 0
 Conc: N.D.

Instrument :
 ECD_D
 ClientSampleId :
 I.BLK



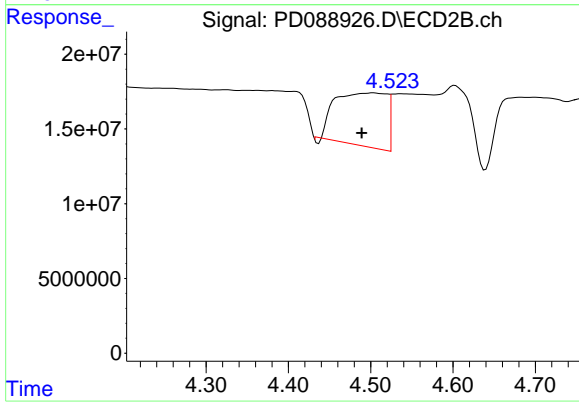
#23 Chlordane-1

R.T.: 3.893 min
 Delta R.T.: -0.015 min
 Response: 2033660
 Conc: 2.46 ng/ml



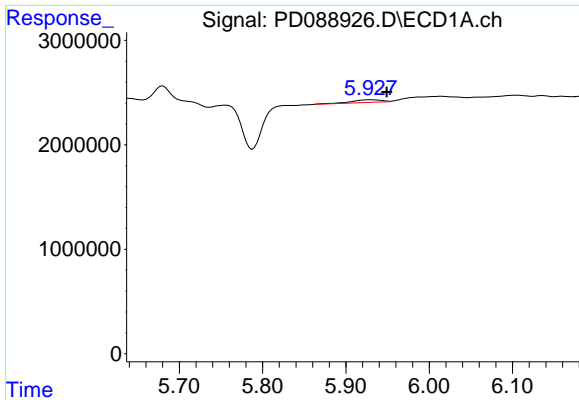
#24 Chlordane-2

R.T.: 5.241 min
 Delta R.T.: -0.002 min
 Response: 312895
 Conc: 1.71 ng/ml



#24 Chlordane-2

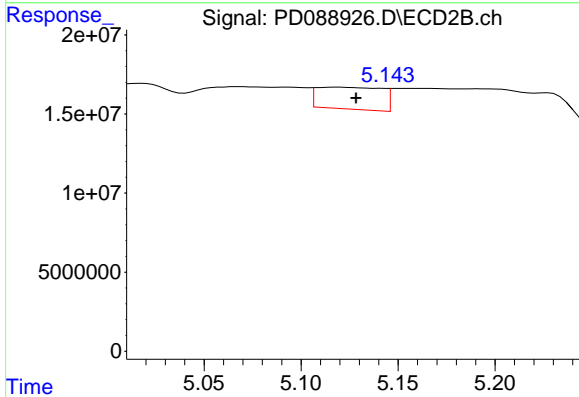
R.T.: 4.504 min
 Delta R.T.: 0.014 min
 Response: 153529607
 Conc: 181.91 ng/ml



#25 Chlordane-3

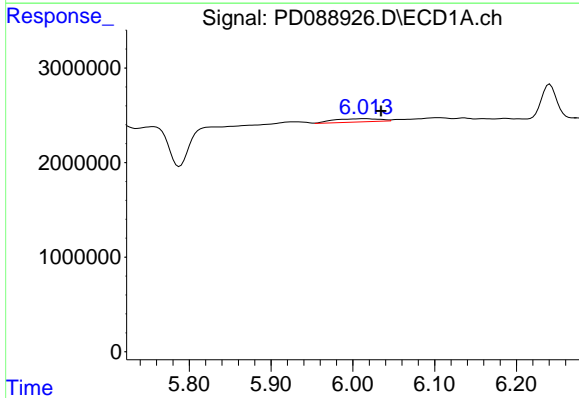
R.T.: 5.929 min
 Delta R.T.: -0.020 min
 Response: 624816
 Conc: 0.84 ng/ml

Instrument :
 ECD_D
 ClientSampleId :
 I.BLK



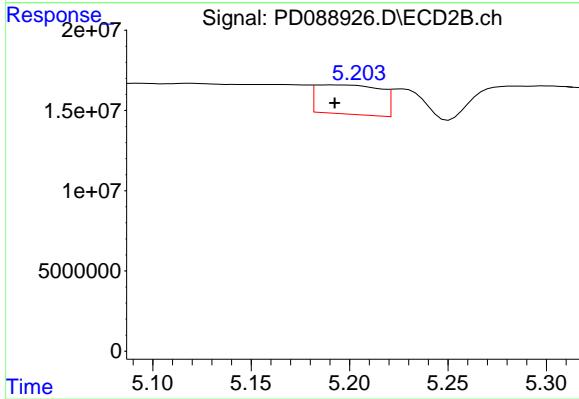
#25 Chlordane-3

R.T.: 5.119 min
 Delta R.T.: -0.009 min
 Response: 32151671
 Conc: 12.19 ng/ml



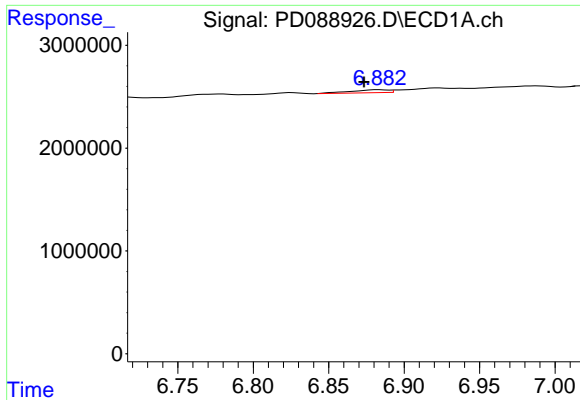
#26 Chlordane-4

R.T.: 6.014 min
 Delta R.T.: -0.020 min
 Response: 1346711
 Conc: 1.50 ng/ml



#26 Chlordane-4

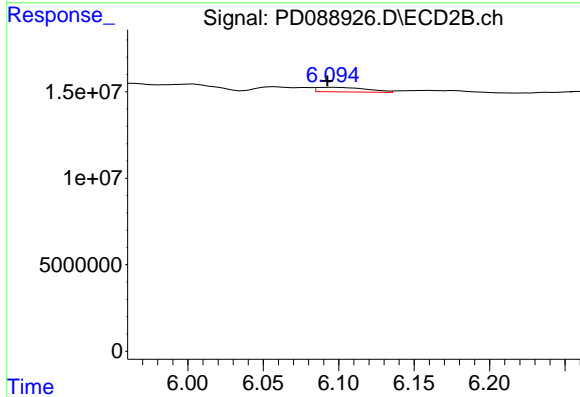
R.T.: 5.191 min
 Delta R.T.: -0.001 min
 Response: 41435574
 Conc: 18.73 ng/ml



#27 Chlordane-5

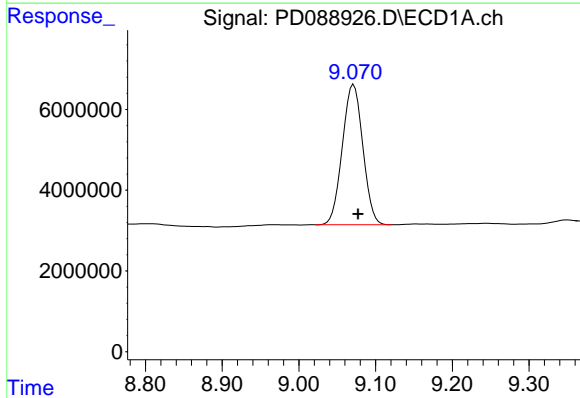
R.T.: 6.883 min
 Delta R.T.: 0.010 min
 Response: 513979
 Conc: 3.38 ng/ml

Instrument :
 ECD_D
 ClientSampleId :
 I.BLK



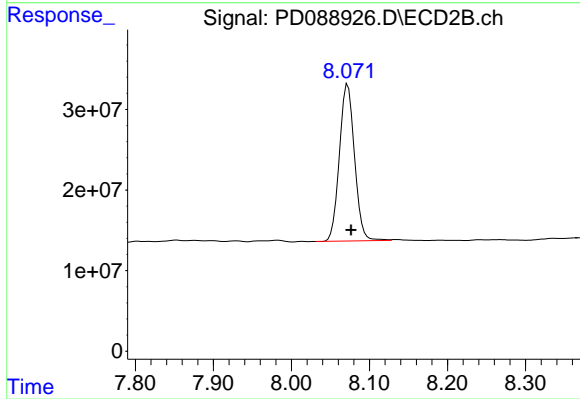
#27 Chlordane-5

R.T.: 6.096 min
 Delta R.T.: 0.003 min
 Response: 5906720
 Conc: 5.90 ng/ml



#28 Decachlorobiphenyl

R.T.: 9.071 min
 Delta R.T.: -0.006 min
 Response: 64717260
 Conc: 18.91 ng/ml



#28 Decachlorobiphenyl

R.T.: 8.072 min
 Delta R.T.: -0.004 min
 Response: 262360591
 Conc: 14.37 ng/ml