

Data Path : Z:\pestpcbsrv\HPCHEM1\ECD_D\Data\PD061125\
 Data File : PD088923.D
 Signal(s) : Signal #1: ECD1A.ch Signal #2: ECD2B.ch
 Acq On : 11 Jun 2025 15:40
 Operator : AR\AJ
 Sample : Q2280-03
 Misc :
 ALS Vial : 19 Sample Multiplier: 1

Instrument :
 ECD_D
ClientSampleId :
 RT-4643

Manual Integrations
APPROVED
 Reviewed By :Abdul Mirza 06/12/2025
 Supervised By :mohammad ahmed 06/13/2025

Integration File signal 1: autoint1.e
 Integration File signal 2: autoint2.e
 Quant Time: Jun 12 07:41:06 2025
 Quant Method : Z:\pestpcbsrv\HPCHEM1\ECD_D\Method\PD051925.M
 Quant Title : GC Extractables
 QLast Update : Mon May 19 15:27:28 2025
 Response via : Initial Calibration
 Integrator: ChemStation

Volume Inj. : 1 µl
 Signal #1 Phase : ZB-MR1 Signal #2 Phase: ZB-MR2
 Signal #1 Info : 30M x 0.32mm x0.5 Signal #2 Info : 30M x 0.32mm x 0.25µm

Compound	RT#1	RT#2	Resp#1	Resp#2	ng/ml	ng/ml

System Monitoring Compounds						
1) SA Tetrachlo...	3.548	2.879	46824622	295.7E6	21.640	19.550
28) SA Decachlor...	9.070	8.069	66862064	321.9E6	19.537m	17.634m
Target Compounds						
8) B Heptachlo...	5.688	4.870	2756249	19258072	0.694m	0.969m#
10) B gamma-Chl...	5.944	5.124	6702683	19251618	1.680	0.902m#
11) B alpha-Chl...	6.033	5.188	23731507	42395215	5.924	2.056m#
12) B 4,4'-DDE	6.196	5.373	5016456	38053325	1.398m	1.820m#
13) MA Dieldrin	6.346	5.510	4609264	60796549	1.149	2.889m#
17) MA 4,4'-DDT	7.019	6.182	8451287	57739285	2.707m	3.183

(f)=RT Delta > 1/2 Window (#)=Amounts differ by > 25% (m)=manual int.

Data Path : Z:\pestpcbsrv\HPCHEM1\ECD_D\Data\PD061125\
 Data File : PD088923.D
 Signal(s) : Signal #1: ECD1A.ch Signal #2: ECD2B.ch
 Acq On : 11 Jun 2025 15:40
 Operator : AR\AJ
 Sample : Q2280-03
 Misc :
 ALS Vial : 19 Sample Multiplier: 1

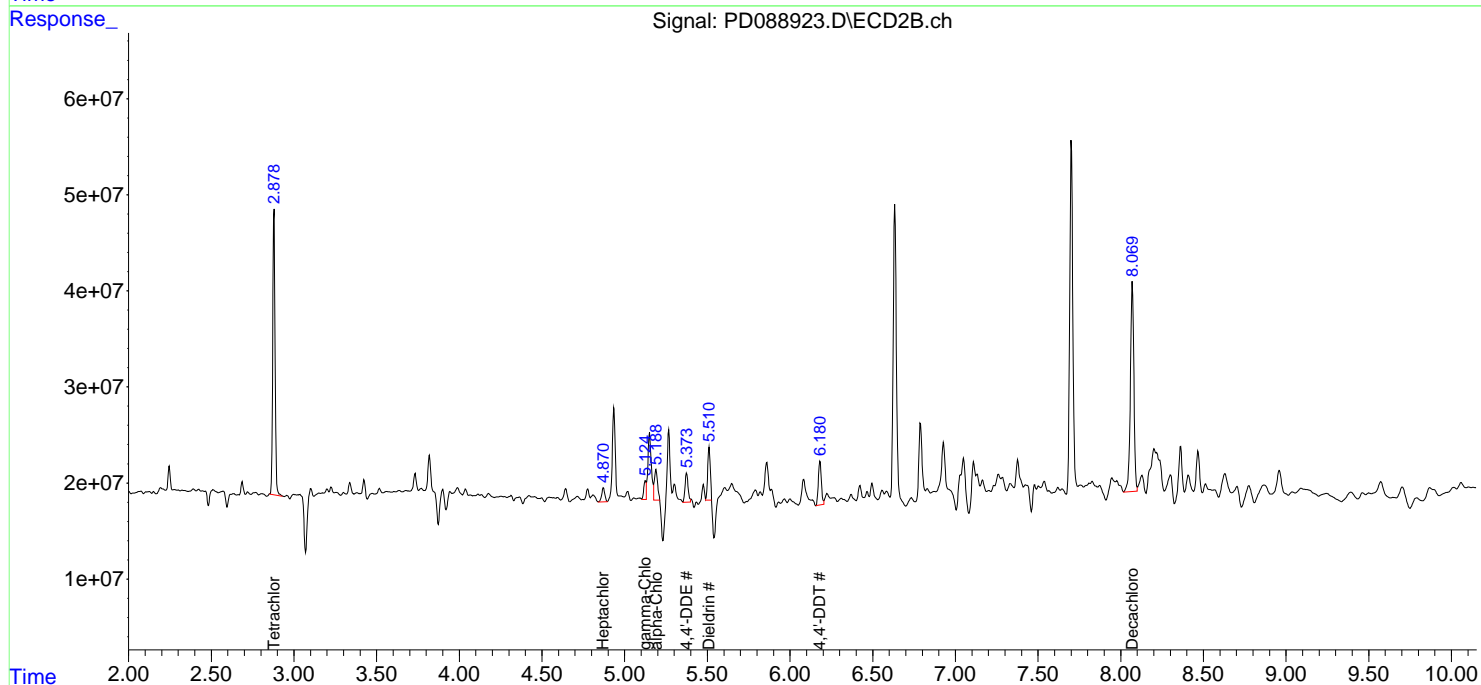
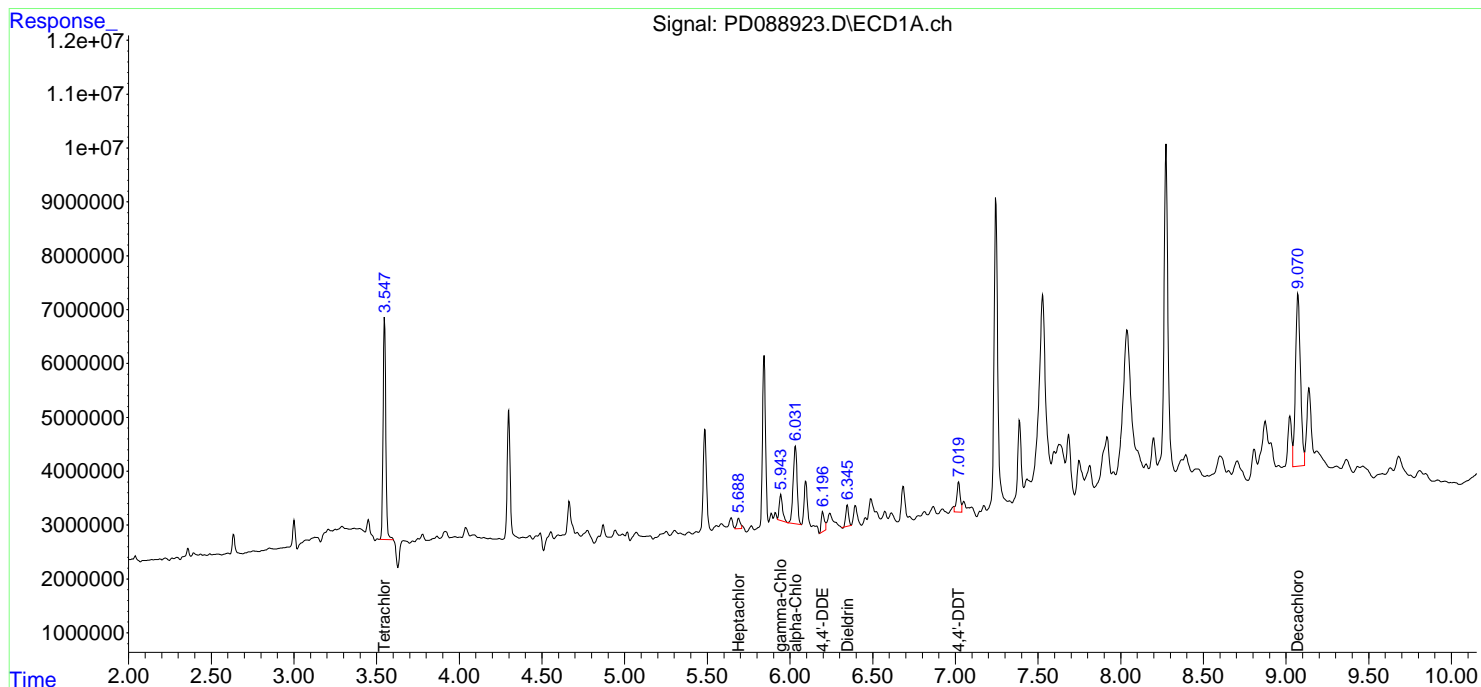
Instrument :
 ECD_D
ClientSampleId :
 RT-4643

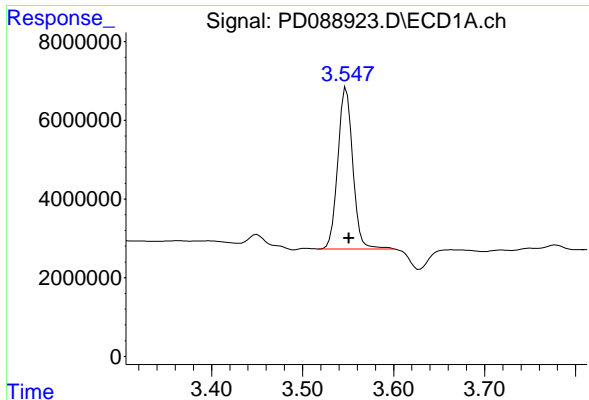
Manual Integrations
APPROVED

Reviewed By :Abdul Mirza 06/12/2025
 Supervised By :mohammad ahmed 06/13/2025

Integration File signal 1: autoint1.e
 Integration File signal 2: autoint2.e
 Quant Time: Jun 12 07:41:06 2025
 Quant Method : Z:\pestpcbsrv\HPCHEM1\ECD_D\Method\PD051925.M
 Quant Title : GC Extractables
 QLast Update : Mon May 19 15:27:28 2025
 Response via : Initial Calibration
 Integrator: ChemStation

Volume Inj. : 1 µl
 Signal #1 Phase : ZB-MR1 Signal #2 Phase: ZB-MR2
 Signal #1 Info : 30M x 0.32mm x0.5 Signal #2 Info : 30M x 0.32mm x 0.25µm





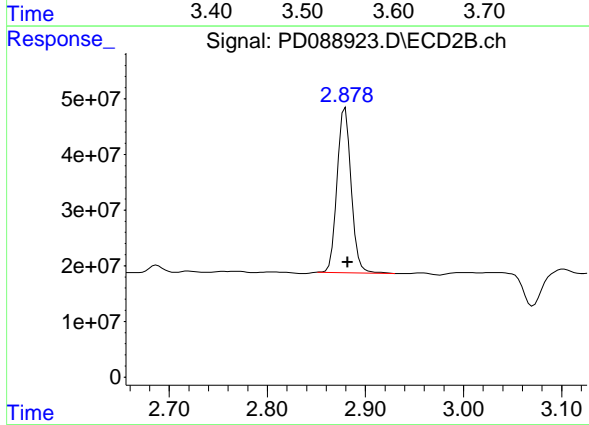
#1 Tetrachloro-m-xylene

R.T.: 3.548 min
 Delta R.T.: -0.003 min
 Response: 46824622
 Conc: 21.64 ng/ml

Instrument : ECD_D
 Client Sample Id : RT-4643

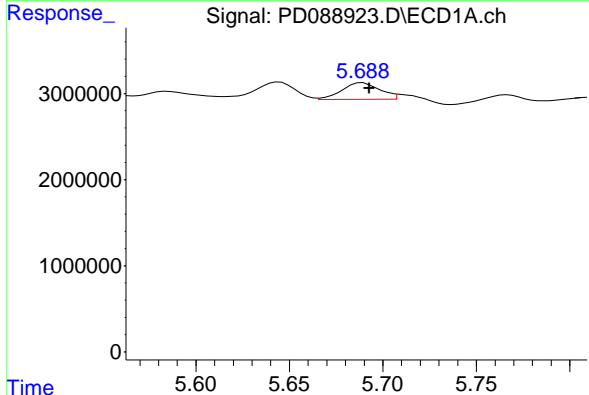
Manual Integrations
 APPROVED

Reviewed By :Abdul Mirza 06/12/2025
 Supervised By :mohammad ahmed 06/13/2025



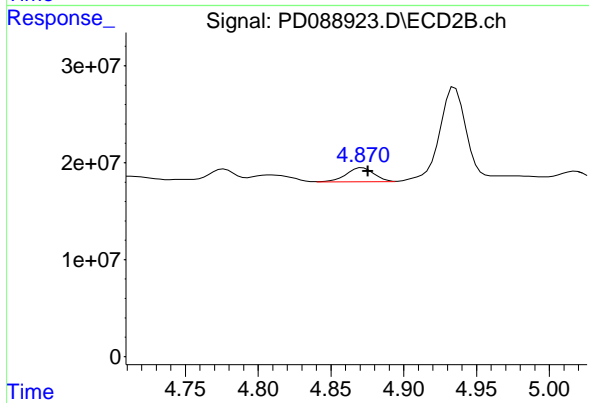
#1 Tetrachloro-m-xylene

R.T.: 2.879 min
 Delta R.T.: -0.002 min
 Response: 295728356
 Conc: 19.55 ng/ml



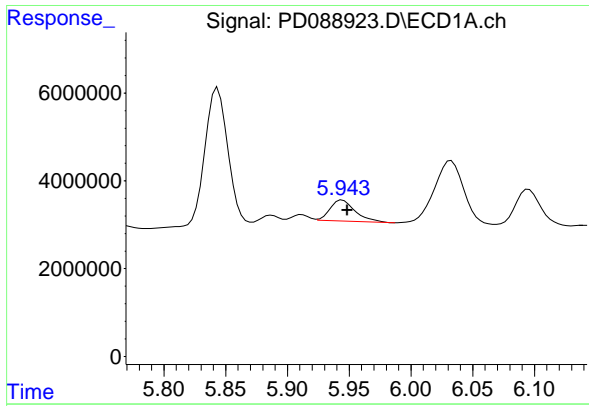
#8 Heptachlor epoxide

R.T.: 5.688 min
 Delta R.T.: -0.005 min
 Response: 2756249
 Conc: 0.69 ng/ml m



#8 Heptachlor epoxide

R.T.: 4.870 min
 Delta R.T.: -0.005 min
 Response: 19258072
 Conc: 0.97 ng/ml m



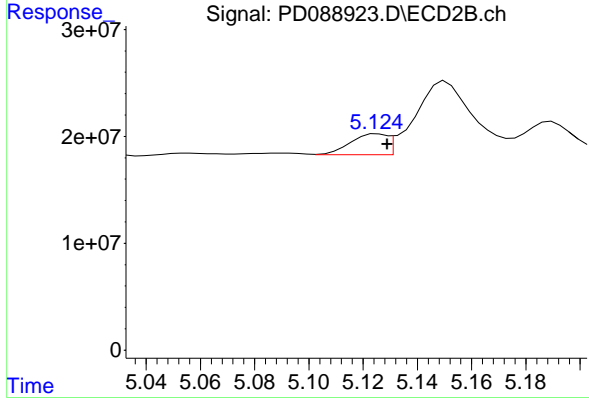
#10 gamma-Chlordane

R.T.: 5.944 min
 Delta R.T.: -0.004 min
 Response: 6702683
 Conc: 1.68 ng/ml

Instrument : ECD_D
 Client SampleId : RT-4643

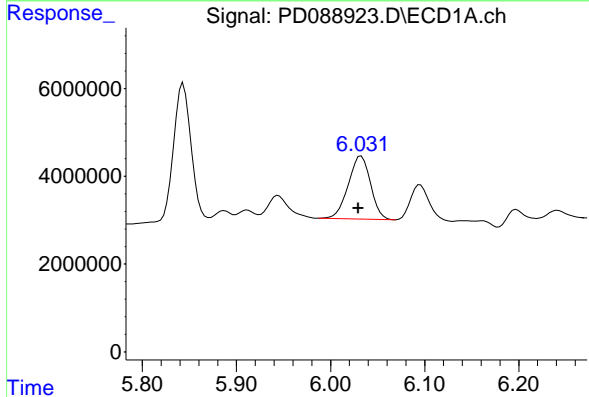
Manual Integrations
 APPROVED

Reviewed By :Abdul Mirza 06/12/2025
 Supervised By :mohammad ahmed 06/13/2025



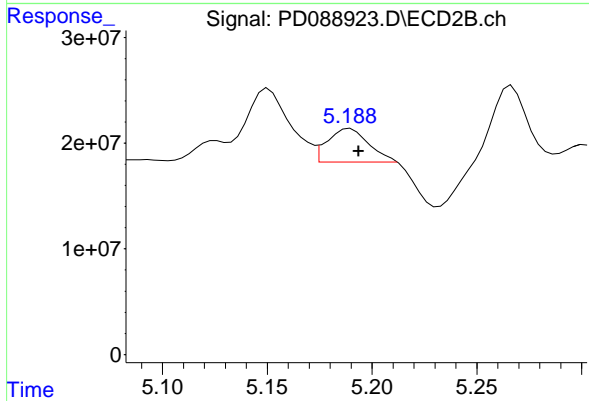
#10 gamma-Chlordane

R.T.: 5.124 min
 Delta R.T.: -0.005 min
 Response: 19251618
 Conc: 0.90 ng/ml m



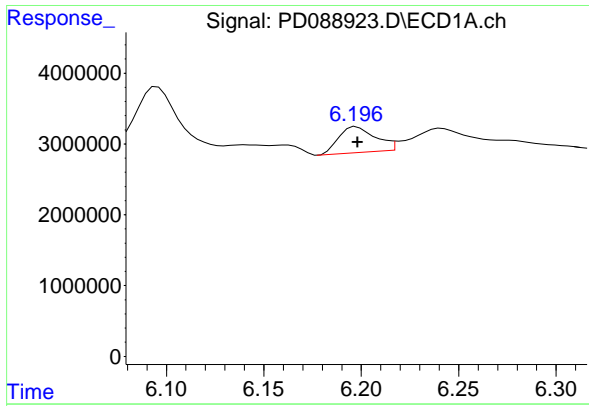
#11 alpha-Chlordane

R.T.: 6.033 min
 Delta R.T.: 0.003 min
 Response: 23731507
 Conc: 5.92 ng/ml



#11 alpha-Chlordane

R.T.: 5.188 min
 Delta R.T.: -0.005 min
 Response: 42395215
 Conc: 2.06 ng/ml m



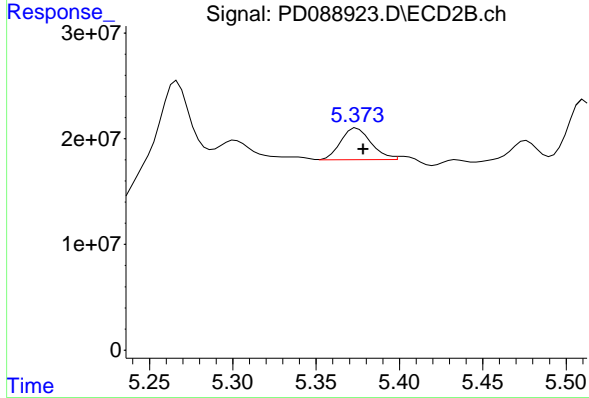
#12 4,4' -DDE

R.T.: 6.196 min
 Delta R.T.: -0.002 min
 Response: 5016456
 Conc: 1.40 ng/ml

Instrument :
 ECD_D
 ClientSampleId :
 RT-4643

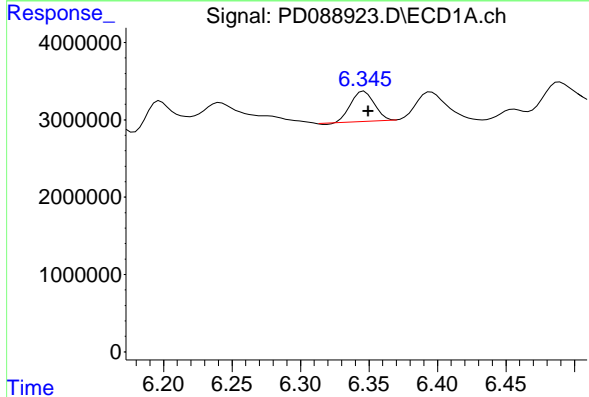
Manual Integrations
 APPROVED

Reviewed By :Abdul Mirza 06/12/2025
 Supervised By :mohammad ahmed 06/13/2025



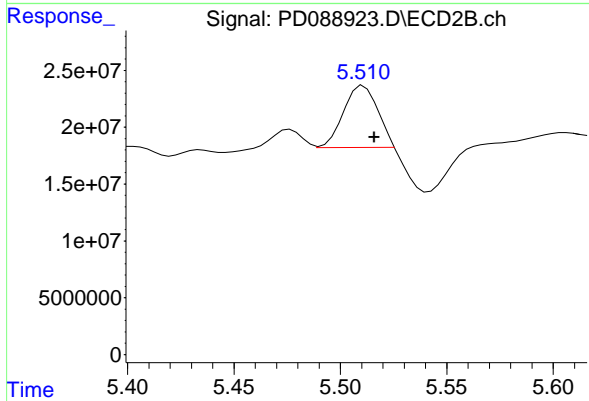
#12 4,4' -DDE

R.T.: 5.373 min
 Delta R.T.: -0.005 min
 Response: 38053325
 Conc: 1.82 ng/ml m



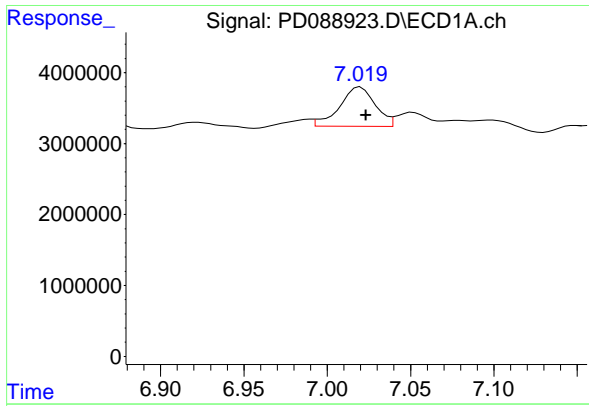
#13 Dieldrin

R.T.: 6.346 min
 Delta R.T.: -0.003 min
 Response: 4609264
 Conc: 1.15 ng/ml



#13 Dieldrin

R.T.: 5.510 min
 Delta R.T.: -0.006 min
 Response: 60796549
 Conc: 2.89 ng/ml m



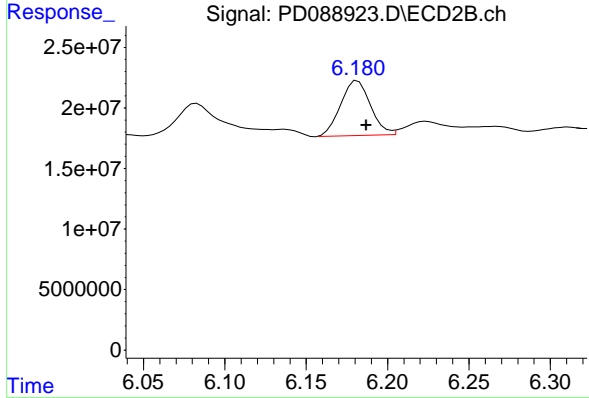
#17 4,4' -DDT

R.T.: 7.019 min
 Delta R.T.: -0.005 min
 Response: 8451287
 Conc: 2.71 ng/ml

Instrument : ECD_D
 ClientSampleId : RT-4643

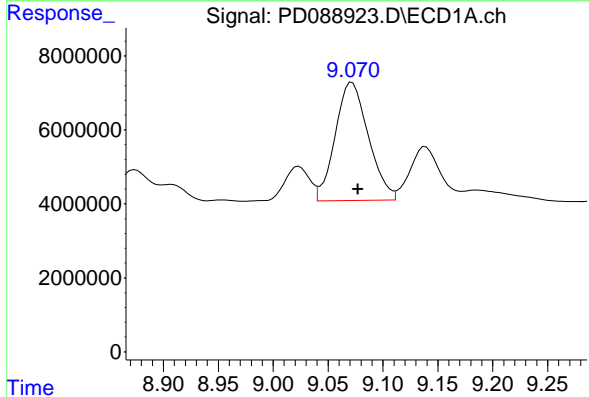
Manual Integrations
 APPROVED

Reviewed By :Abdul Mirza 06/12/2025
 Supervised By :mohammad ahmed 06/13/2025



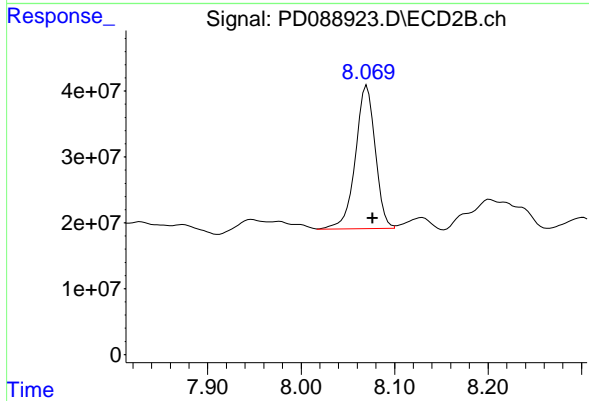
#17 4,4' -DDT

R.T.: 6.182 min
 Delta R.T.: -0.005 min
 Response: 57739285
 Conc: 3.18 ng/ml



#28 Decachlorobiphenyl

R.T.: 9.070 min
 Delta R.T.: -0.007 min
 Response: 66862064
 Conc: 19.54 ng/ml m



#28 Decachlorobiphenyl

R.T.: 8.069 min
 Delta R.T.: -0.007 min
 Response: 321925939
 Conc: 17.63 ng/ml m