

Data Path : Z:\pestpcbsrv\HPCHEM1\ECD\_D\Data\PD061219\  
 Data File : PD053612.D  
 Signal(s) : Signal #1: ECD1A.CH Signal #2: ECD2B.CH  
 Acq On : 12 Jun 2019 20:06  
 Operator : SM\AJ  
 Sample : PEM35  
 Misc :  
 ALS Vial : 3 Sample Multiplier: 1

Instrument :  
 ECD\_D  
 ClientSampleId :  
 PEM50

Integration File signal 1: autoint1.e  
 Integration File signal 2: autoint2.e  
 Quant Time: Jun 13 01:30:28 2019  
 Quant Method : Z:\pestpcbsrv\HPCHEM1\ECD\_D\Method\PD052119CLP.M  
 Quant Title : GC Extractables  
 QLast Update : Wed May 22 06:53:42 2019  
 Response via : Initial Calibration  
 Integrator: ChemStation 6890 Scale Mode: Large solvent peaks clipped

Volume Inj. : 1 µl  
 Signal #1 Phase : ZB-MR2 Signal #2 Phase: ZB-MR1  
 Signal #1 Info : 30M x 0.32mm x0.2 Signal #2 Info : 30M x 0.32mm x 0.50µm

Compound	RT#1	RT#2	Resp#1	Resp#2	ng/ml	ng/ml
-----						
System Monitoring Compounds						
1) SA Tetrachlo...	3.315	3.985	12556736	18614742	17.138	18.907
27) SA Decachlor...	8.011	9.027	11666420	16631349	17.636	16.101
Target Compounds						
2) A alpha-BHC	3.745	4.371	8591615	12127094	9.183	10.050
3) MA gamma-BHC...	4.021	4.654	8401660	12254245	9.796	10.499
4) MA Heptachlor	4.271f	0.000	3854234	0	5.303	N.D. #
6) B beta-BHC	4.271	4.821	3854234	6191184	9.284	10.555
12) B 4,4'-DDE	0.000	6.312	0	252579	N.D.	0.205
14) MA Endrin	5.816	6.678	31641694	45175336	48.518	50.315
15) B Endosulfa...	0.000	6.850f	0	271505	N.D.	0.258
16) A 4,4'-DDD	0.000	6.799	0	419554	N.D.	0.454
17) MA 4,4'-DDT	6.187	7.096	56439610	90675610	104.118	102.854
18) B Endrin al...	0.000	7.007	0	938003	N.D.	1.050
20) A Methoxychlor	6.737	7.551	60445866	110.0E6	265.722	256.049
21) B Endrin ke...	0.000	7.698	0	1567063	N.D.	1.471
22) Toxaphene-1	0.000	6.312	0	252579	N.D.	44.000
23) Toxaphene-2	0.000	6.678	0	45175336	N.D.	6330.977
24) Toxaphene-3	0.000	7.096	0	90675610	N.D.	8924.393
25) Toxaphene-4	6.187	7.096	56439610	90675610	4644.492	3180.532 #
26) Toxaphene-5	0.000	7.637	0	866116	N.D.	68.665

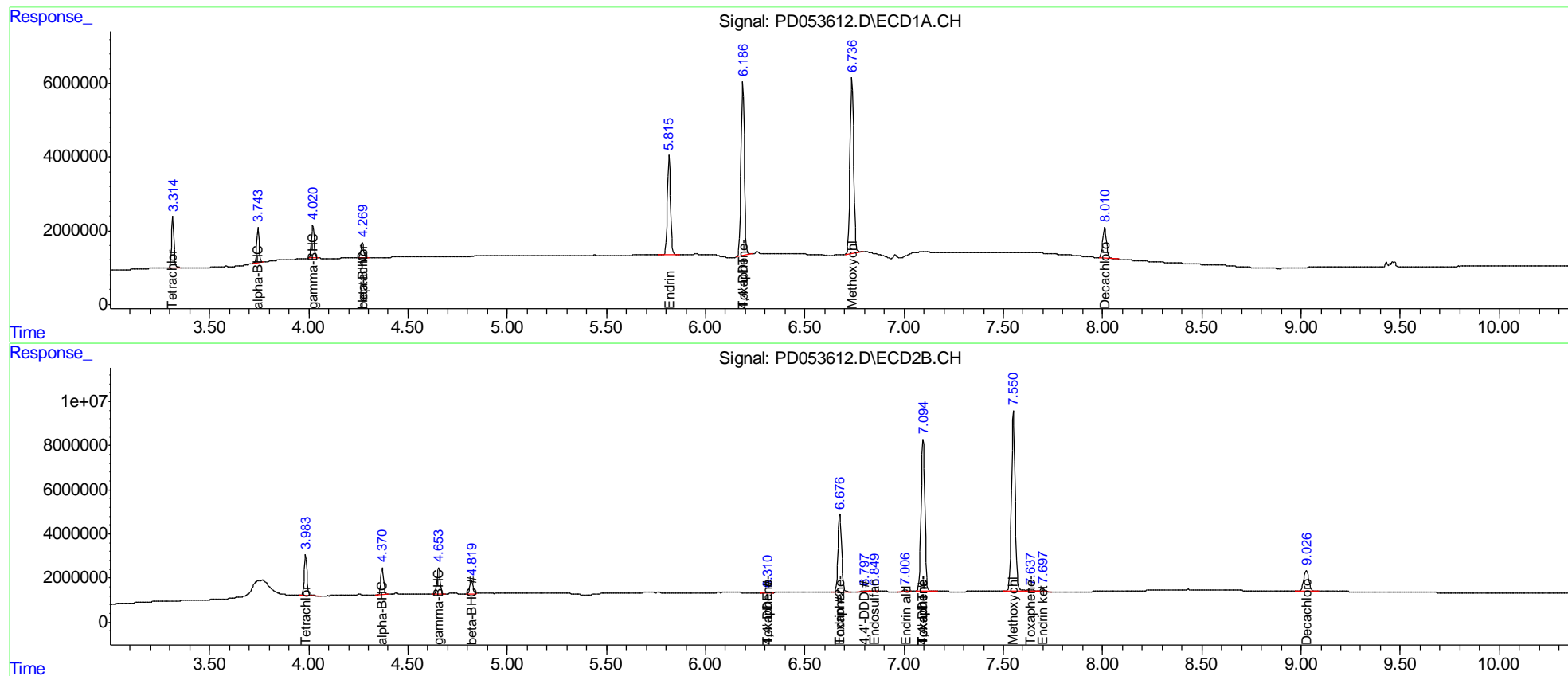
(f)=RT Delta > 1/2 Window (#)=Amounts differ by > 25% (m)=manual int.

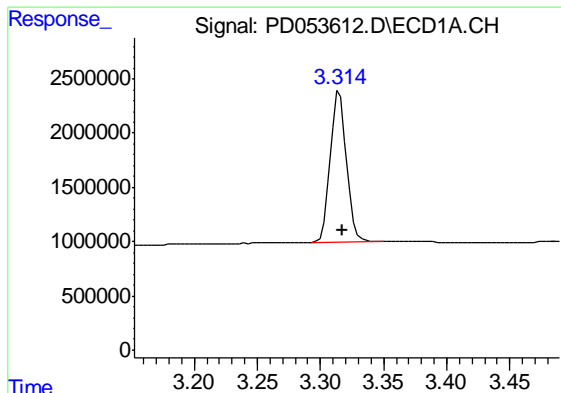
Data Path : Z:\pestpcbsrv\HPCHEM1\ECD\_D\Data\PD061219\  
 Data File : PD053612.D  
 Signal(s) : Signal #1: ECD1A.CH Signal #2: ECD2B.CH  
 Acq On : 12 Jun 2019 20:06  
 Operator : SM\AJ  
 Sample : PEM35  
 Misc :  
 ALS Vial : 3 Sample Multiplier: 1

Instrument :  
 ECD\_D  
 ClientSampleId :  
 PEM50

Integration File signal 1: autoint1.e  
 Integration File signal 2: autoint2.e  
 Quant Time: Jun 13 01:30:28 2019  
 Quant Method : Z:\pestpcbsrv\HPCHEM1\ECD\_D\Method\PD052119CLP.M  
 Quant Title : GC Extractables  
 QLast Update : Wed May 22 06:53:42 2019  
 Response via : Initial Calibration  
 Integrator: ChemStation 6890 Scale Mode: Large solvent peaks clipped

Volume Inj. : 1 µl  
 Signal #1 Phase : ZB-MR2 Signal #2 Phase: ZB-MR1  
 Signal #1 Info : 30M x 0.32mm x0.2 Signal #2 Info : 30M x 0.32mm x 0.50µm

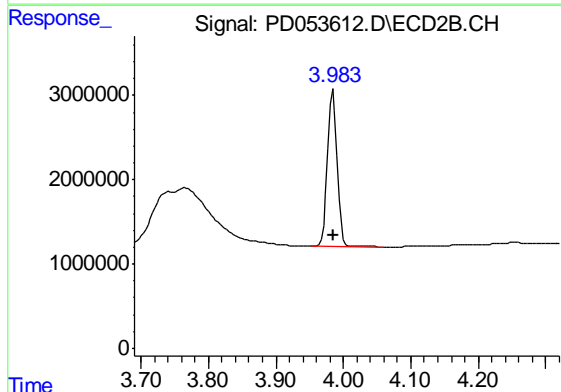




#1 Tetrachloro-m-xylene

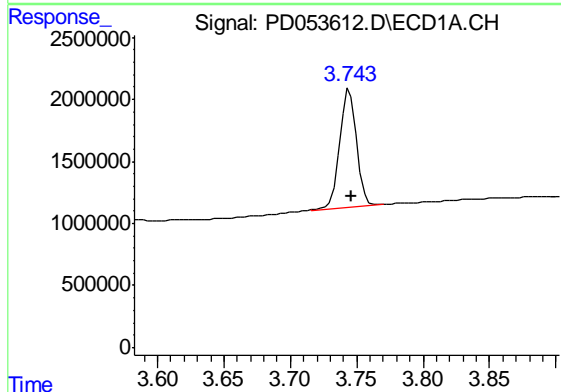
R.T.: 3.315 min  
 Delta R.T.: -0.002 min  
 Response: 12556736  
 Conc: 17.14 ng/ml

Instrument :  
 ECD\_D  
 ClientSampleId :  
 PEM50



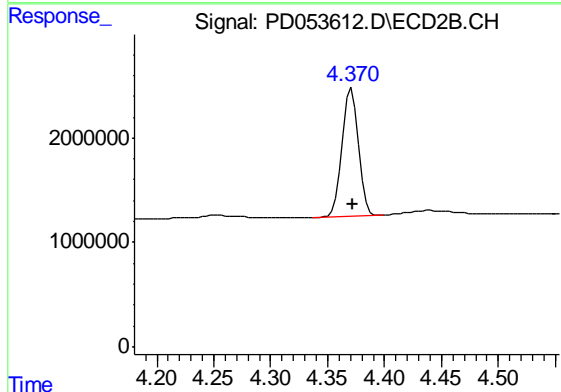
#1 Tetrachloro-m-xylene

R.T.: 3.985 min  
 Delta R.T.: 0.000 min  
 Response: 18614742  
 Conc: 18.91 ng/ml



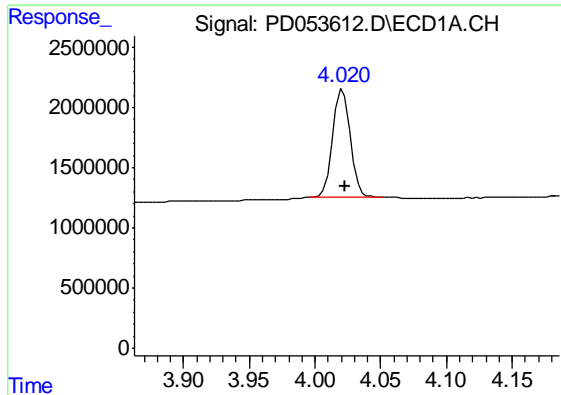
#2 alpha-BHC

R.T.: 3.745 min  
 Delta R.T.: -0.002 min  
 Response: 8591615  
 Conc: 9.18 ng/ml



#2 alpha-BHC

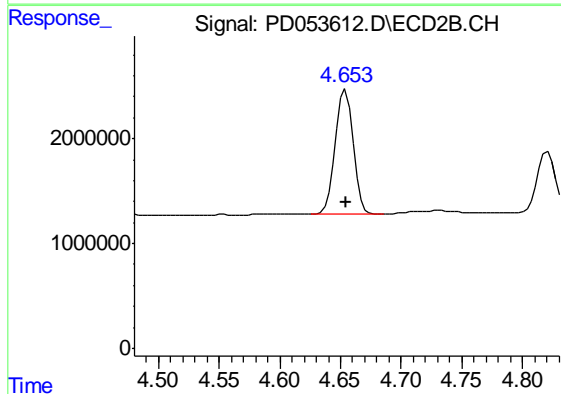
R.T.: 4.371 min  
 Delta R.T.: 0.000 min  
 Response: 12127094  
 Conc: 10.05 ng/ml



#3 gamma-BHC (Lindane)

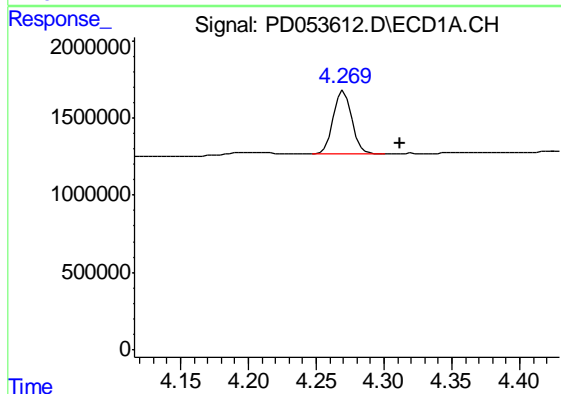
R.T.: 4.021 min  
 Delta R.T.: -0.001 min  
 Response: 8401660  
 Conc: 9.80 ng/ml

Instrument :  
 ECD\_D  
 ClientSampleId :  
 PEM50



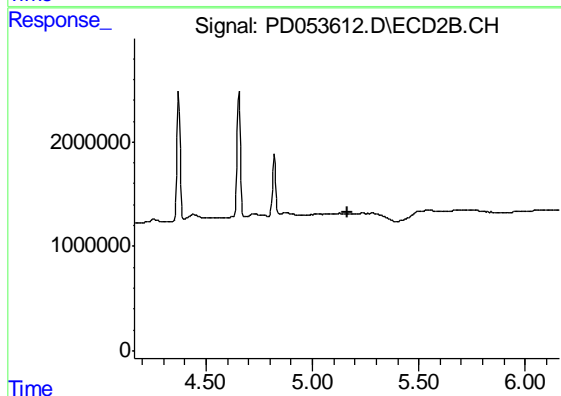
#3 gamma-BHC (Lindane)

R.T.: 4.654 min  
 Delta R.T.: 0.000 min  
 Response: 12254245  
 Conc: 10.50 ng/ml



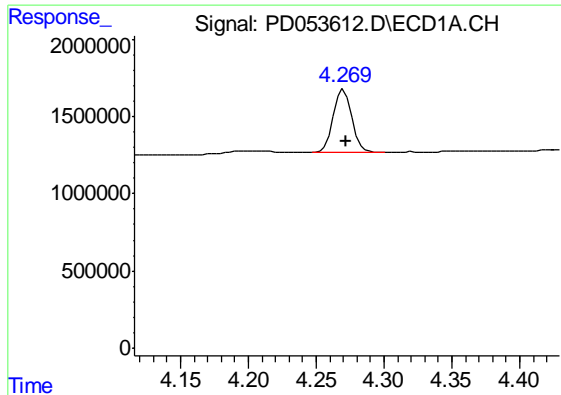
#4 Heptachlor

R.T.: 4.271 min  
 Delta R.T.: -0.041 min  
 Response: 3854234  
 Conc: 5.30 ng/ml



#4 Heptachlor

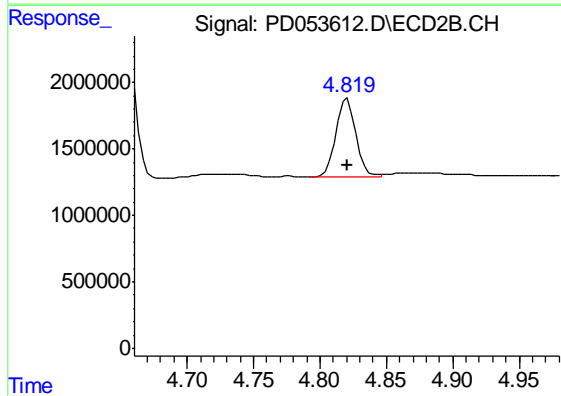
R.T.: 0.000 min  
 Exp R.T. : 5.163 min  
 Response: 0  
 Conc: N.D.



#6 beta-BHC

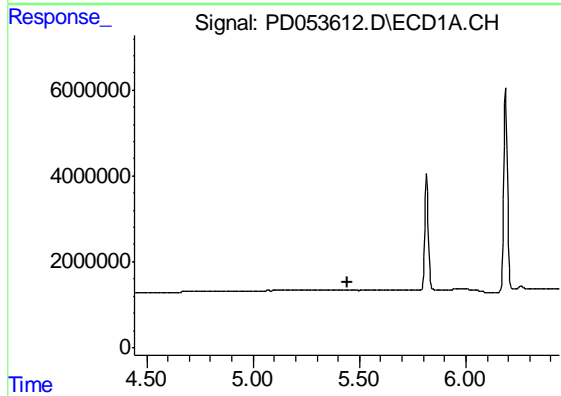
R.T.: 4.271 min  
Delta R.T.: -0.001 min  
Response: 3854234  
Conc: 9.28 ng/ml

Instrument :  
ECD\_D  
ClientSampled :  
PEM50



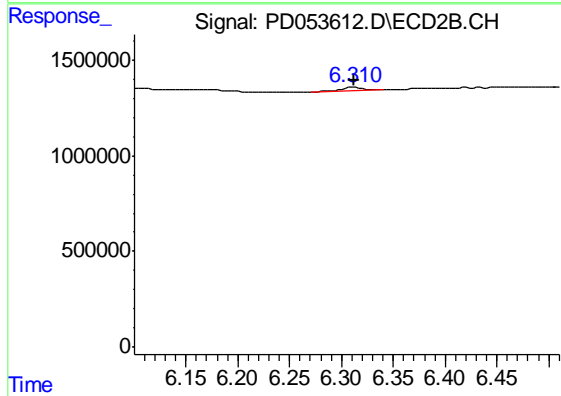
#6 beta-BHC

R.T.: 4.821 min  
Delta R.T.: 0.000 min  
Response: 6191184  
Conc: 10.56 ng/ml



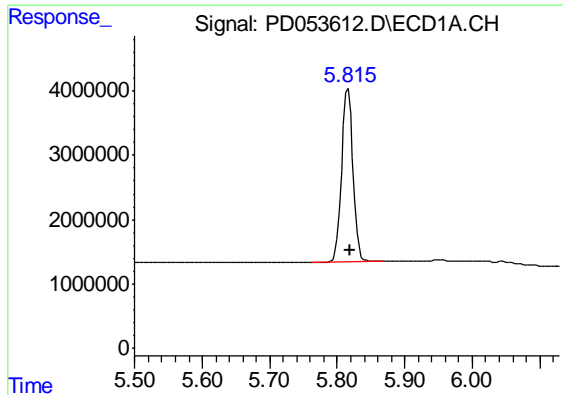
#12 4,4'-DDE

R.T.: 0.000 min  
Exp R.T. : 5.442 min  
Response: 0  
Conc: N.D.



#12 4,4'-DDE

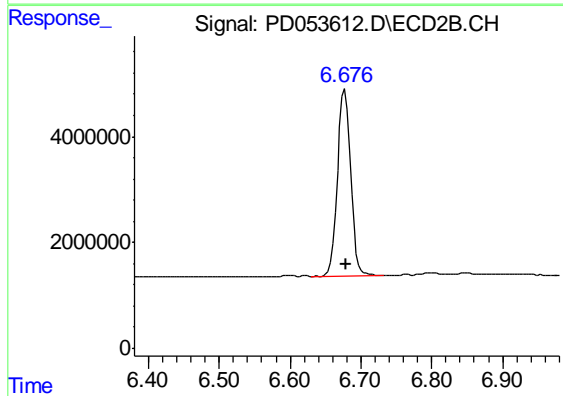
R.T.: 6.312 min  
Delta R.T.: 0.000 min  
Response: 252579  
Conc: 0.20 ng/ml



#14 Endrin

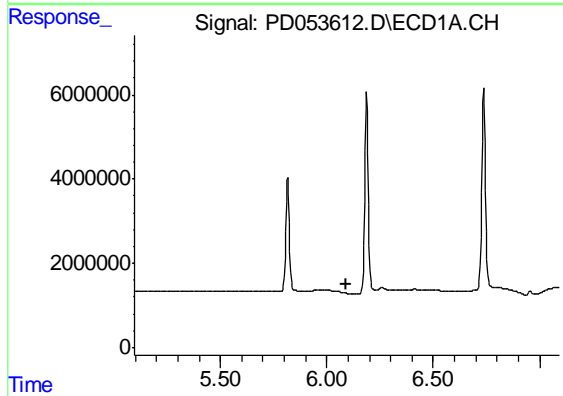
R.T.: 5.816 min  
 Delta R.T.: -0.003 min  
 Response: 31641694  
 Conc: 48.52 ng/ml

Instrument :  
 ECD\_D  
 ClientSampleId :  
 PEM50



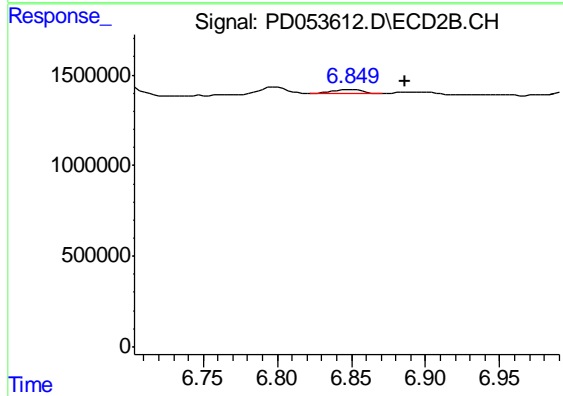
#14 Endrin

R.T.: 6.678 min  
 Delta R.T.: -0.001 min  
 Response: 45175336  
 Conc: 50.32 ng/ml



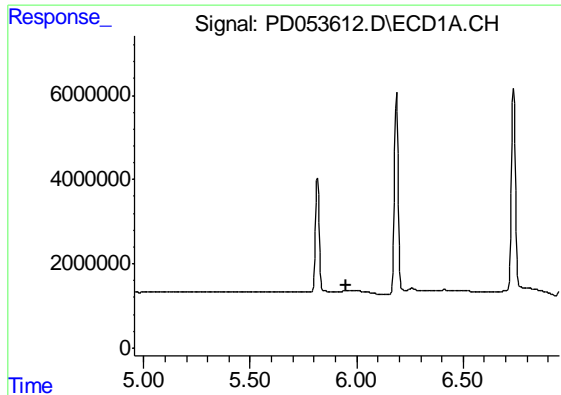
#15 Endosulfan II

R.T.: 0.000 min  
 Exp R.T. : 6.093 min  
 Response: 0  
 Conc: N.D.



#15 Endosulfan II

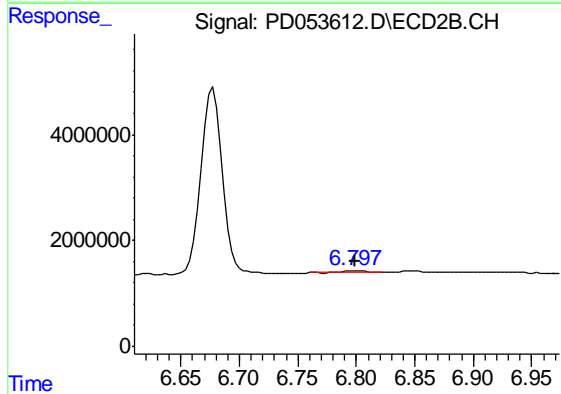
R.T.: 6.850 min  
 Delta R.T.: -0.036 min  
 Response: 271505  
 Conc: 0.26 ng/ml



#16 4,4'-DDD

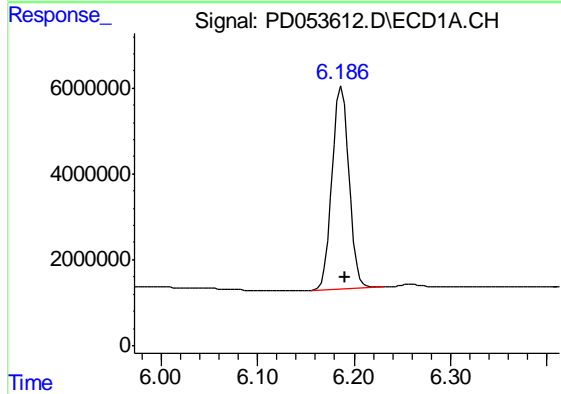
R.T.: 0.000 min  
 Exp R.T. : 5.953 min  
 Response: 0  
 Conc: N.D.

Instrument :  
 ECD\_D  
 ClientSampleId :  
 PEM50



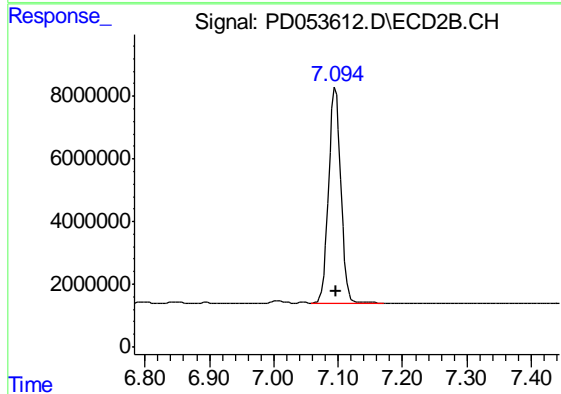
#16 4,4'-DDD

R.T.: 6.799 min  
 Delta R.T.: 0.000 min  
 Response: 419554  
 Conc: 0.45 ng/ml



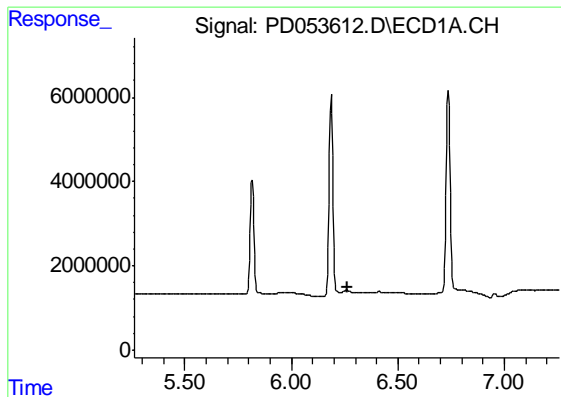
#17 4,4'-DDT

R.T.: 6.187 min  
 Delta R.T.: -0.003 min  
 Response: 56439610  
 Conc: 104.12 ng/ml



#17 4,4'-DDT

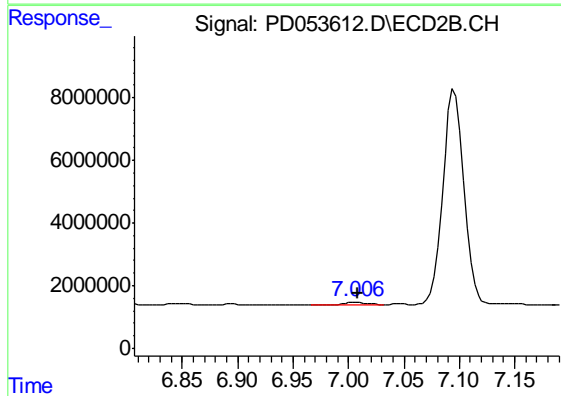
R.T.: 7.096 min  
 Delta R.T.: -0.001 min  
 Response: 90675610  
 Conc: 102.85 ng/ml



#18 Endrin aldehyde

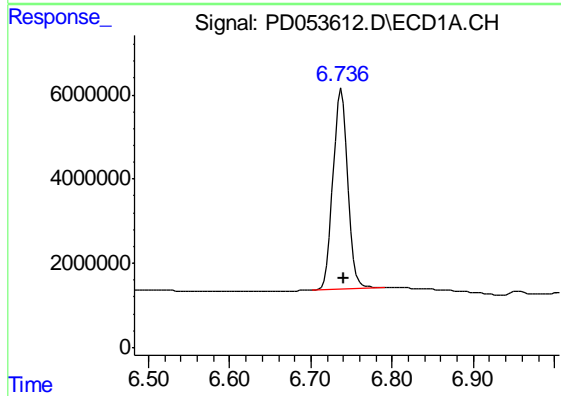
R.T.: 0.000 min  
 Exp R.T. : 6.262 min  
 Response: 0  
 Conc: N.D.

Instrument :  
 ECD\_D  
 ClientSampleId :  
 PEM50



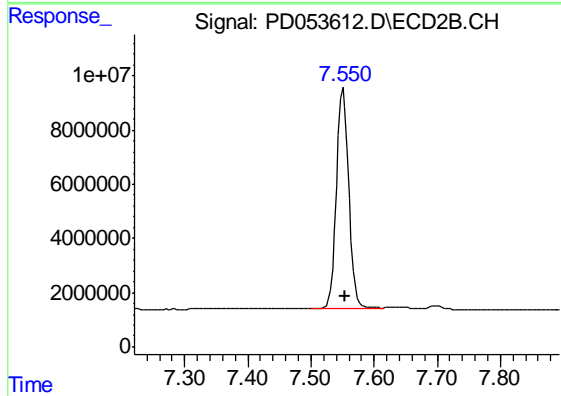
#18 Endrin aldehyde

R.T.: 7.007 min  
 Delta R.T.: -0.002 min  
 Response: 938003  
 Conc: 1.05 ng/ml



#20 Methoxychlor

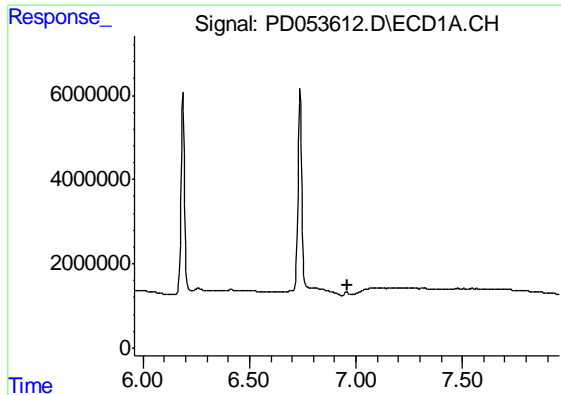
R.T.: 6.737 min  
 Delta R.T.: -0.004 min  
 Response: 60445866  
 Conc: 265.72 ng/ml



#20 Methoxychlor

R.T.: 7.551 min  
 Delta R.T.: -0.002 min  
 Response: 110016998  
 Conc: 256.05 ng/ml

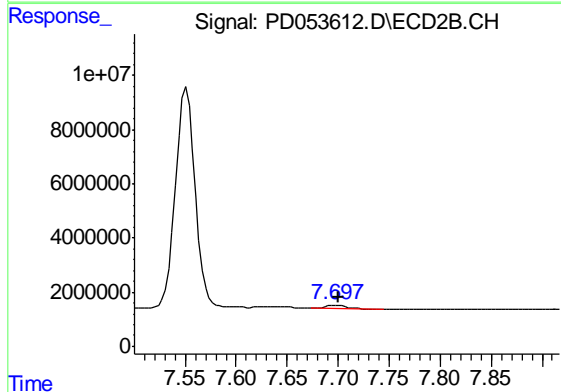




#21 Endrin ketone

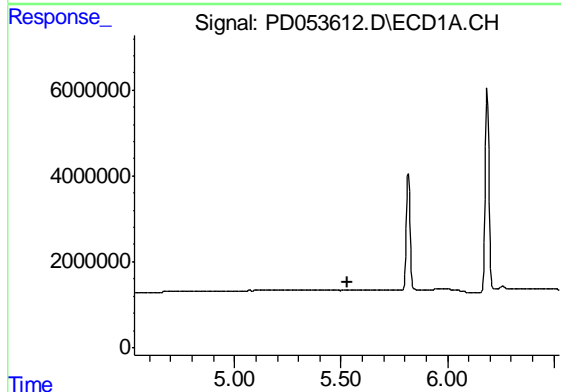
R.T.: 0.000 min  
 Exp R.T. : 6.959 min  
 Response: 0  
 Conc: N.D.

Instrument :  
 ECD\_D  
 ClientSampleId :  
 PEM50



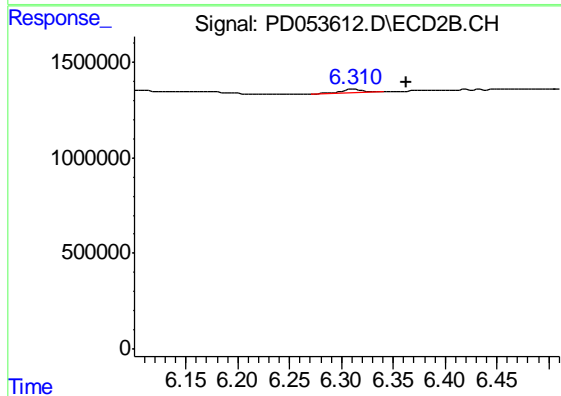
#21 Endrin ketone

R.T.: 7.698 min  
 Delta R.T.: -0.002 min  
 Response: 1567063  
 Conc: 1.47 ng/ml



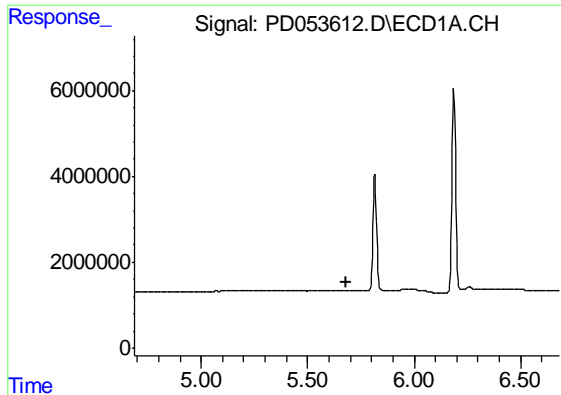
#22 Toxaphene-1

R.T.: 0.000 min  
 Exp R.T. : 5.528 min  
 Response: 0  
 Conc: N.D.



#22 Toxaphene-1

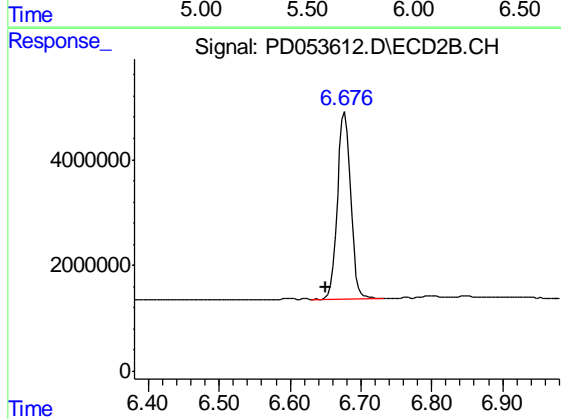
R.T.: 6.312 min  
 Delta R.T.: -0.051 min  
 Response: 252579  
 Conc: 44.00 ng/ml



#23 Toxaphene-2

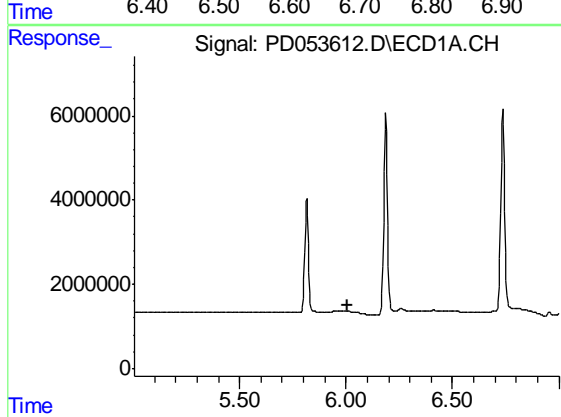
R.T.: 0.000 min  
 Exp R.T. : 5.684 min  
 Response: 0  
 Conc: N.D.

Instrument :  
 ECD\_D  
 ClientSampled :  
 PEM50



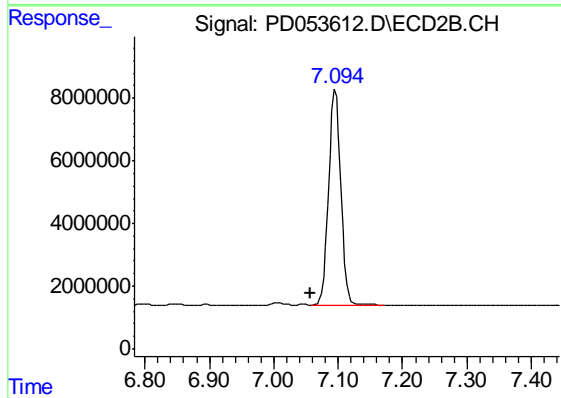
#23 Toxaphene-2

R.T.: 6.678 min  
 Delta R.T.: 0.026 min  
 Response: 45175336  
 Conc: 6330.98 ng/ml



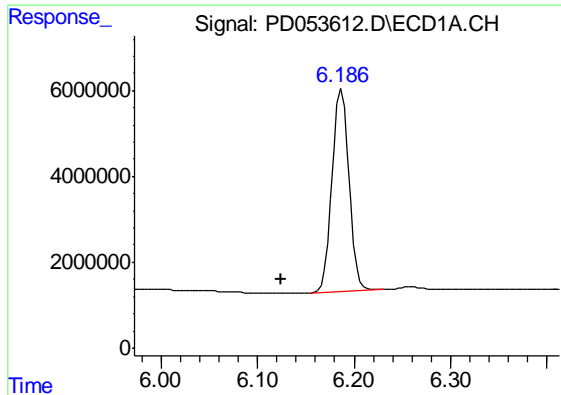
#24 Toxaphene-3

R.T.: 0.000 min  
 Exp R.T. : 6.004 min  
 Response: 0  
 Conc: N.D.



#24 Toxaphene-3

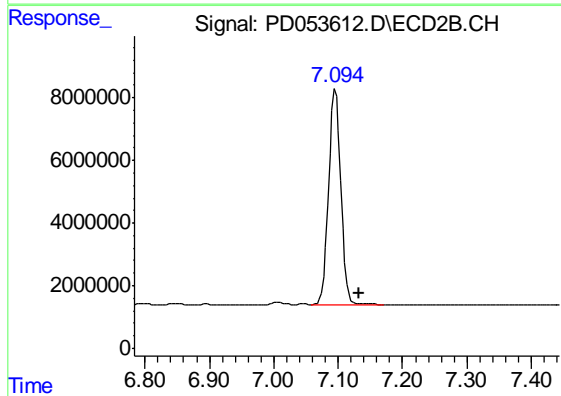
R.T.: 7.096 min  
 Delta R.T.: 0.039 min  
 Response: 90675610  
 Conc: 8924.39 ng/ml



#25 Toxaphene-4

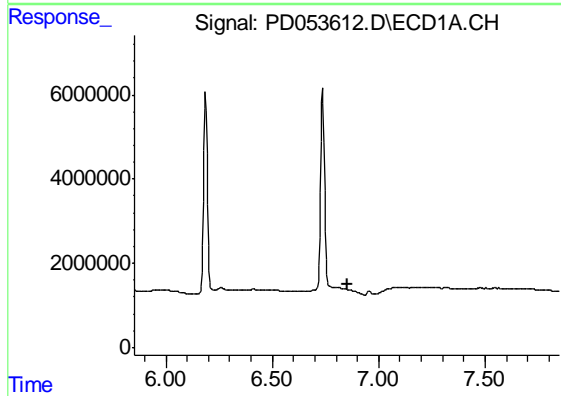
R.T.: 6.187 min  
 Delta R.T.: 0.063 min  
 Response: 56439610  
 Conc: 4644.49 ng/ml

Instrument :  
 ECD\_D  
 ClientSampleId :  
 PEM50



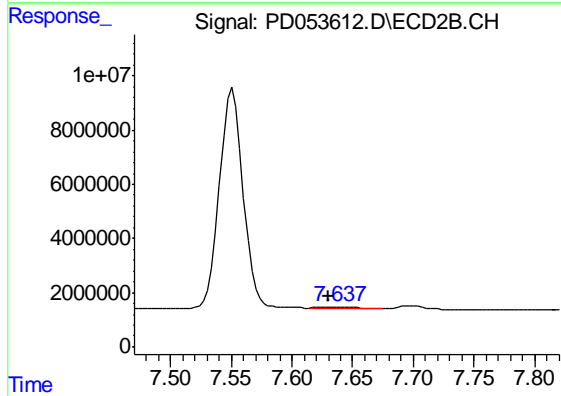
#25 Toxaphene-4

R.T.: 7.096 min  
 Delta R.T.: -0.037 min  
 Response: 90675610  
 Conc: 3180.53 ng/ml



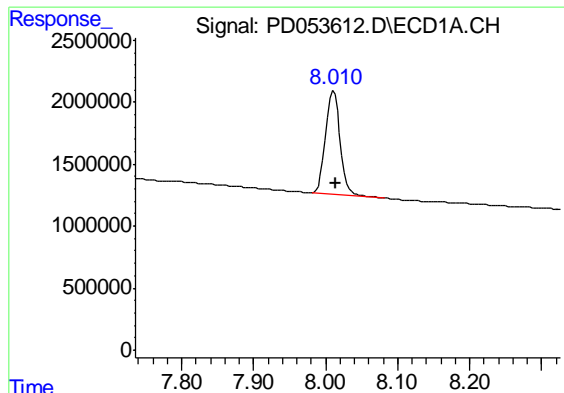
#26 Toxaphene-5

R.T.: 0.000 min  
 Exp R.T. : 6.851 min  
 Response: 0  
 Conc: N.D.



#26 Toxaphene-5

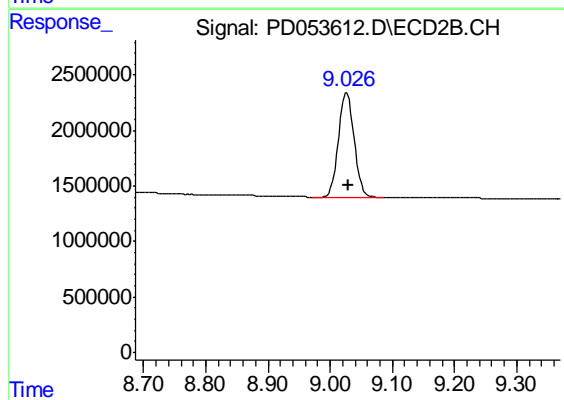
R.T.: 7.637 min  
 Delta R.T.: 0.007 min  
 Response: 866116  
 Conc: 68.67 ng/ml



#27 Decachlorobiphenyl

R.T.: 8.011 min  
Delta R.T.: -0.004 min  
Response: 11666420  
Conc: 17.64 ng/ml

Instrument :  
ECD\_D  
ClientSampleId :  
PEM50



#27 Decachlorobiphenyl

R.T.: 9.027 min  
Delta R.T.: -0.002 min  
Response: 16631349  
Conc: 16.10 ng/ml