

Data Path : Z:\pestpcbsrv\HPCHEM1\ECD\_D\Data\PD061224\  
 Data File : PD083673.D  
 Signal(s) : Signal #1: ECD1A.ch Signal #2: ECD2B.ch  
 Acq On : 12 Jun 2024 13:12  
 Operator : AR\AJ  
 Sample : P2796-07  
 Misc :  
 ALS Vial : 4 Sample Multiplier: 1

Instrument :  
 ECD\_D  
 ClientSampleId :

Integration File signal 1: autoint1.e  
 Integration File signal 2: autoint2.e  
 Quant Time: Jun 13 01:26:11 2024  
 Quant Method : Z:\pestpcbsrv\HPCHEM1\ECD\_D\Method\PD060724CLP.M  
 Quant Title : GC Extractables  
 QLast Update : Fri Jun 07 04:03:14 2024  
 Response via : Initial Calibration  
 Integrator: ChemStation

Volume Inj. : 1 µl  
 Signal #1 Phase : ZB-MR1 Signal #2 Phase: ZB-MR2  
 Signal #1 Info : 30M x 0.32mm x0.5 Signal #2 Info : 30M x 0.32mm x 0.25µm

Compound	RT#1	RT#2	Resp#1	Resp#2	ng/ml	ng/ml
----------	------	------	--------	--------	-------	-------

System Monitoring Compounds

Target Compounds

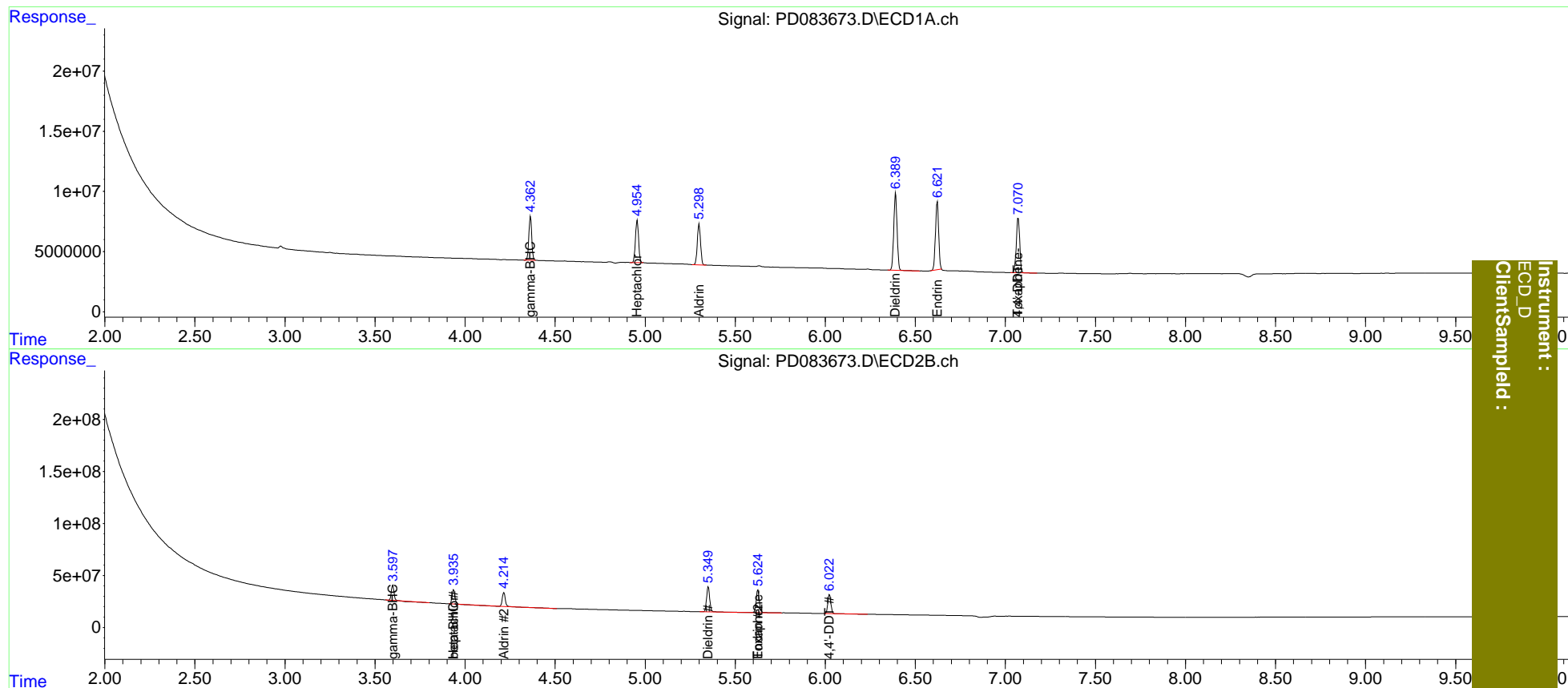
3) MA	gamma-BHC...	4.363	3.598	39743392	142.3E6	18.268	18.219
4) MA	Heptachlor	4.956	3.937	42898521	143.1E6	17.659	18.280
5) MB	Aldrin	5.299	4.216	41876798	154.9E6	17.627	20.043
6) B	beta-BHC	0.000	3.937f	0	143.1E6	N.D.	40.110
13) MA	Dieldrin	6.390	5.350	82665616	294.2E6	39.980	40.379
14) MA	Endrin	6.622	5.626	69998835	266.9E6	41.437	41.272
17) MA	4,4'-DDT	7.071	6.023	60485362	216.3E6	40.151	38.220
23)	Toxaphene-2	0.000	5.626f	0	266.9E6	N.D.	6702.819
24)	Toxaphene-3	7.071	0.000	60485362	0	1244.052	N.D. #

(f)=RT Delta > 1/2 Window (#)=Amounts differ by > 25% (m)=manual int.

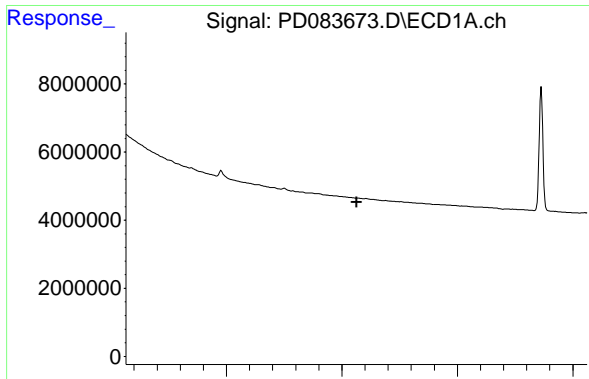
Data Path : Z:\pestpcbsrv\HPCHEM1\ECD\_D\Data\PD061224\  
 Data File : PD083673.D  
 Signal(s) : Signal #1: ECD1A.ch Signal #2: ECD2B.ch  
 Acq On : 12 Jun 2024 13:12  
 Operator : AR\AJ  
 Sample : P2796-07  
 Misc :  
 ALS Vial : 4 Sample Multiplier: 1

Integration File signal 1: autoint1.e  
 Integration File signal 2: autoint2.e  
 Quant Time: Jun 13 01:26:11 2024  
 Quant Method : Z:\pestpcbsrv\HPCHEM1\ECD\_D\Method\PD060724CLP.M  
 Quant Title : GC Extractables  
 QLast Update : Fri Jun 07 04:03:14 2024  
 Response via : Initial Calibration  
 Integrator: ChemStation

Volume Inj. : 1 µl  
 Signal #1 Phase : ZB-MR1 Signal #2 Phase: ZB-MR2  
 Signal #1 Info : 30M x 0.32mm x 0.5 Signal #2 Info : 30M x 0.32mm x 0.25µm



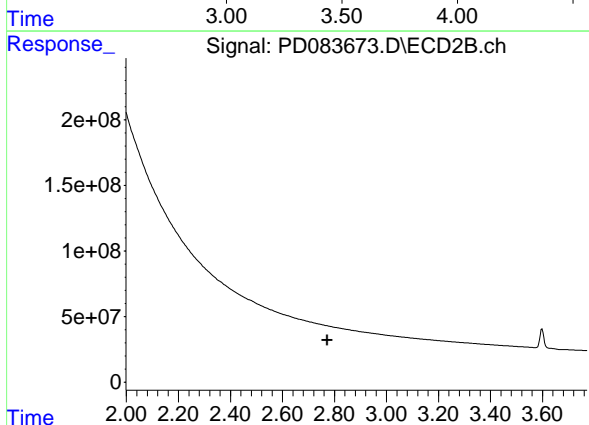
Instrument :  
 ECD\_D  
 ClientSampled :



#1 Tetrachloro-m-xylene

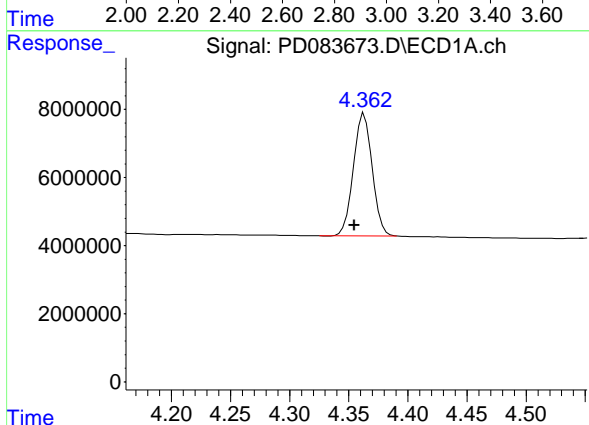
R.T.: 0.000 min  
 Exp R.T.: 3.563 min  
 Response: 0  
 Conc: N.D.

Instrument :  
 ECD\_D  
 ClientSampleId :



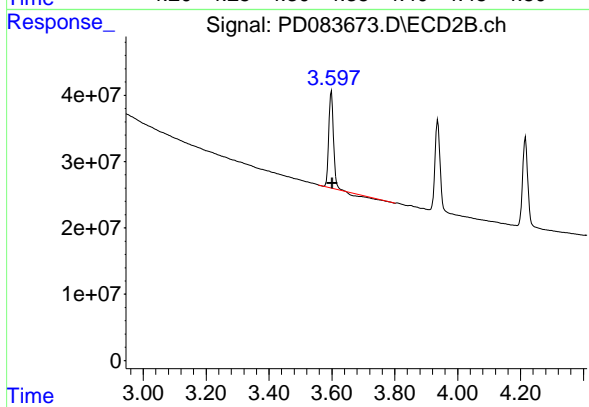
#1 Tetrachloro-m-xylene

R.T.: 0.000 min  
 Exp R.T.: 2.774 min  
 Response: 0  
 Conc: N.D.



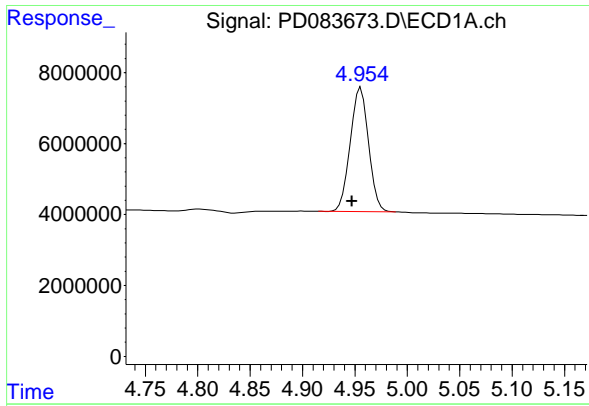
#3 gamma-BHC (Lindane)

R.T.: 4.363 min  
 Delta R.T.: 0.009 min  
 Response: 39743392  
 Conc: 18.27 ng/ml



#3 gamma-BHC (Lindane)

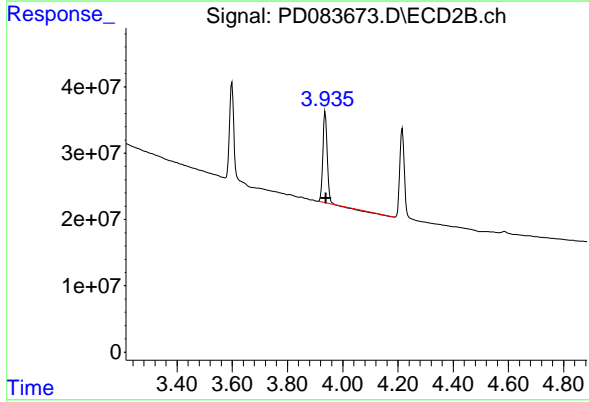
R.T.: 3.598 min  
 Delta R.T.: -0.003 min  
 Response: 142275699  
 Conc: 18.22 ng/ml



#4 Heptachlor

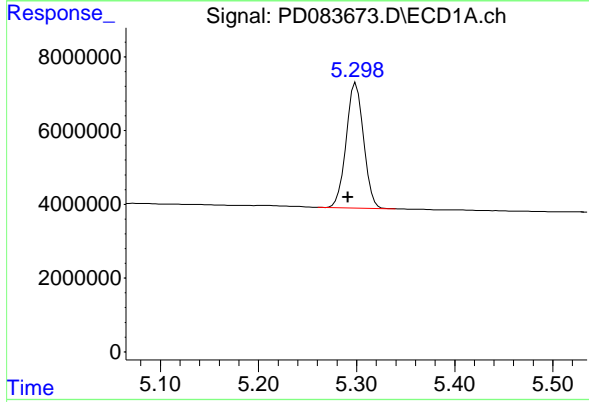
R.T.: 4.956 min  
 Delta R.T.: 0.009 min  
 Response: 42898521  
 Conc: 17.66 ng/ml

Instrument :  
 ECD\_D  
 ClientSampleId :



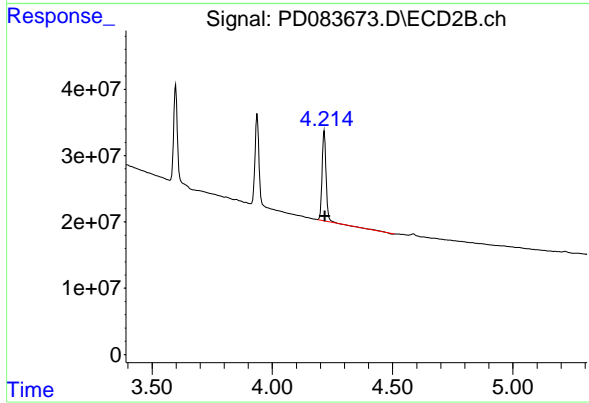
#4 Heptachlor

R.T.: 3.937 min  
 Delta R.T.: -0.003 min  
 Response: 143121619  
 Conc: 18.28 ng/ml



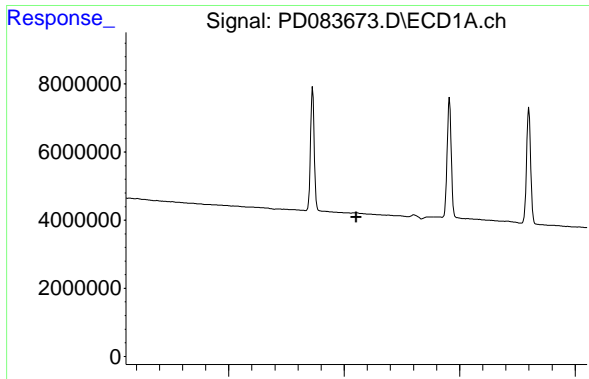
#5 Aldrin

R.T.: 5.299 min  
 Delta R.T.: 0.008 min  
 Response: 41876798  
 Conc: 17.63 ng/ml



#5 Aldrin

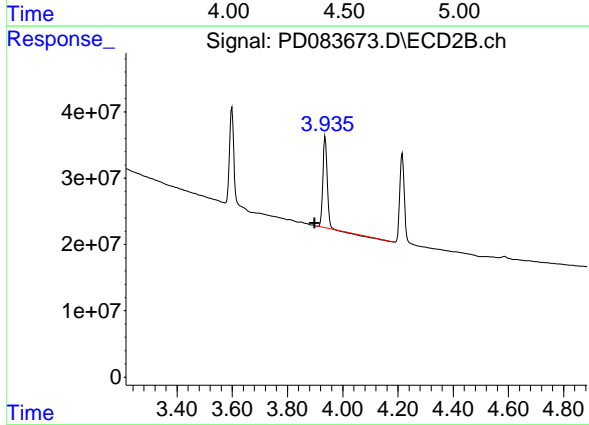
R.T.: 4.216 min  
 Delta R.T.: -0.004 min  
 Response: 154879714  
 Conc: 20.04 ng/ml



#6 beta-BHC

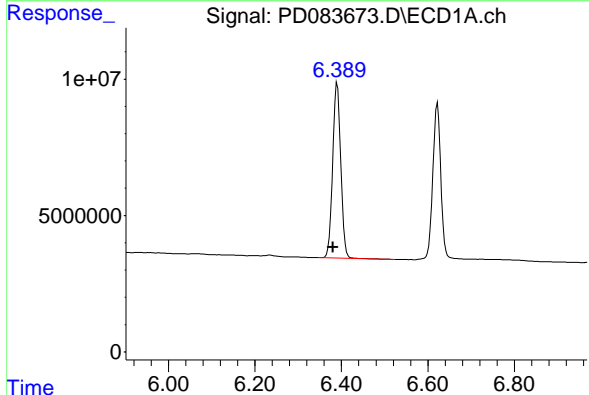
R.T.: 0.000 min  
 Exp R.T.: 4.552 min  
 Response: 0  
 Conc: N.D.

Instrument :  
 ECD\_D  
 ClientSampleId :



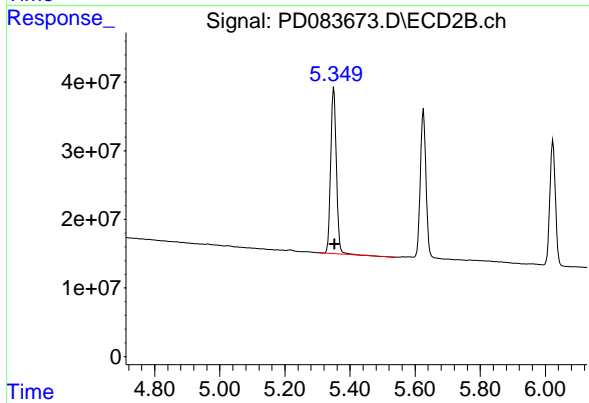
#6 beta-BHC

R.T.: 3.937 min  
 Delta R.T.: 0.038 min  
 Response: 143121619  
 Conc: 40.11 ng/ml



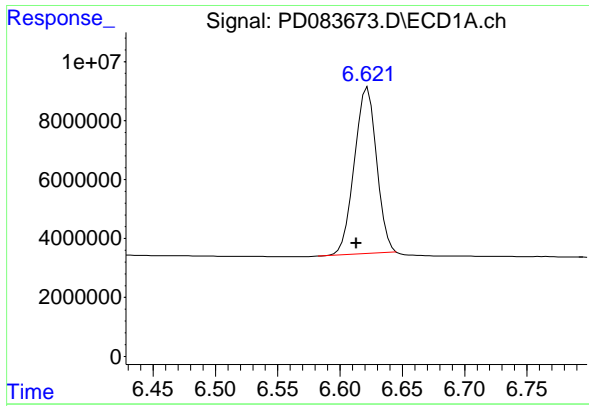
#13 Dieldrin

R.T.: 6.390 min  
 Delta R.T.: 0.009 min  
 Response: 82665616  
 Conc: 39.98 ng/ml



#13 Dieldrin

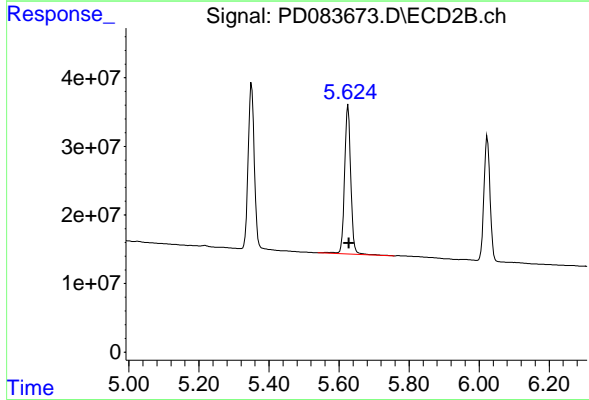
R.T.: 5.350 min  
 Delta R.T.: -0.003 min  
 Response: 294168648  
 Conc: 40.38 ng/ml



#14 Endrin

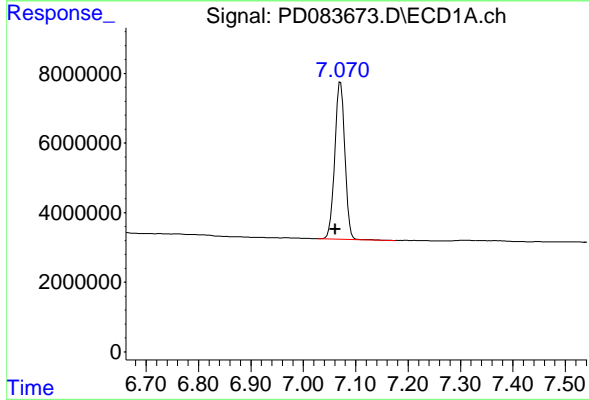
R.T.: 6.622 min  
 Delta R.T.: 0.009 min  
 Response: 69998835  
 Conc: 41.44 ng/ml

Instrument :  
 ECD\_D  
 ClientSampleId :



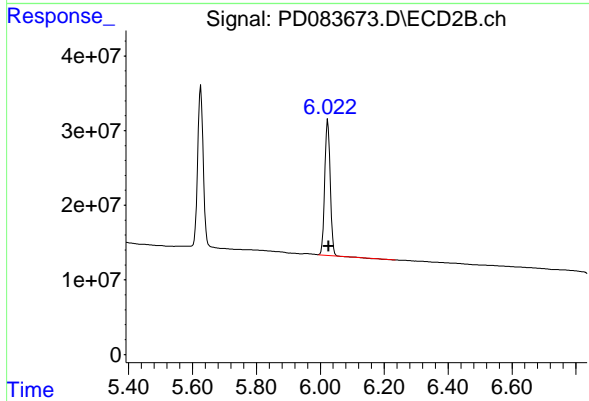
#14 Endrin

R.T.: 5.626 min  
 Delta R.T.: -0.003 min  
 Response: 266920098  
 Conc: 41.27 ng/ml



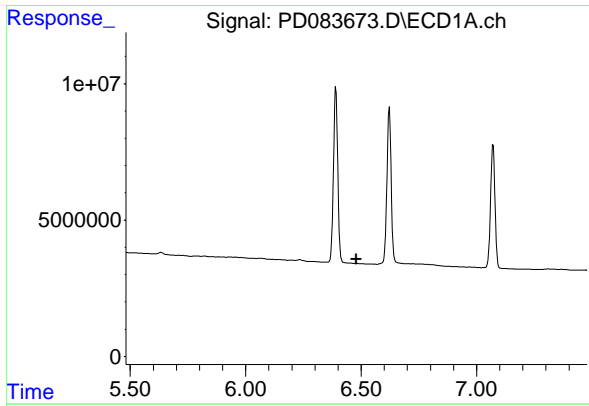
#17 4,4'-DDT

R.T.: 7.071 min  
 Delta R.T.: 0.010 min  
 Response: 60485362  
 Conc: 40.15 ng/ml



#17 4,4'-DDT

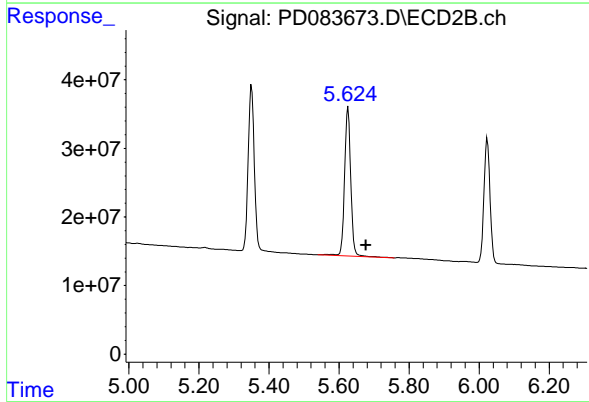
R.T.: 6.023 min  
 Delta R.T.: -0.003 min  
 Response: 216348259  
 Conc: 38.22 ng/ml



#23 Toxaphene-2

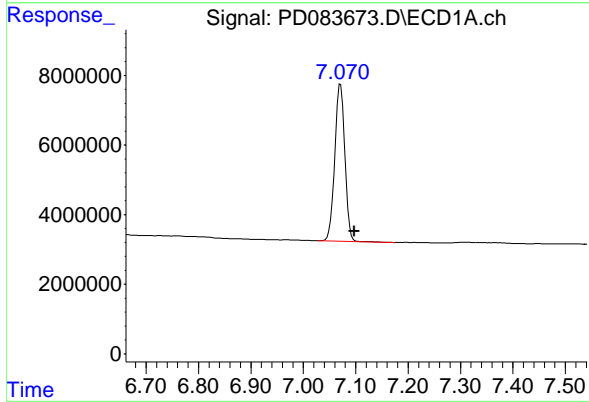
R.T.: 0.000 min  
 Exp R.T. : 6.479 min  
 Response: 0  
 Conc: N.D.

Instrument :  
 ECD\_D  
 ClientSampleId :



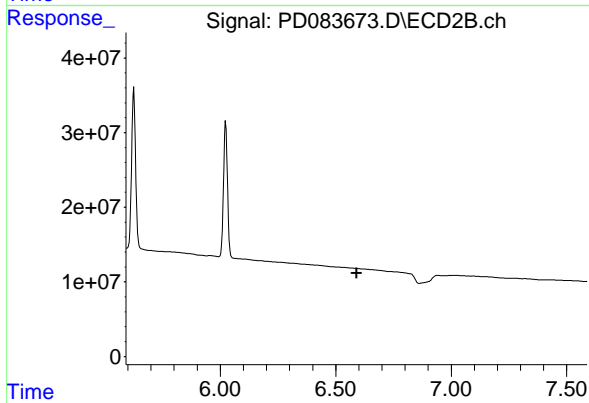
#23 Toxaphene-2

R.T.: 5.626 min  
 Delta R.T.: -0.052 min  
 Response: 266920098  
 Conc: 6702.82 ng/ml



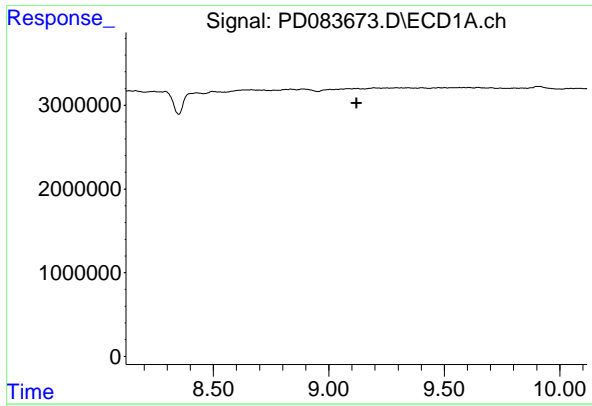
#24 Toxaphene-3

R.T.: 7.071 min  
 Delta R.T.: -0.026 min  
 Response: 60485362  
 Conc: 1244.05 ng/ml



#24 Toxaphene-3

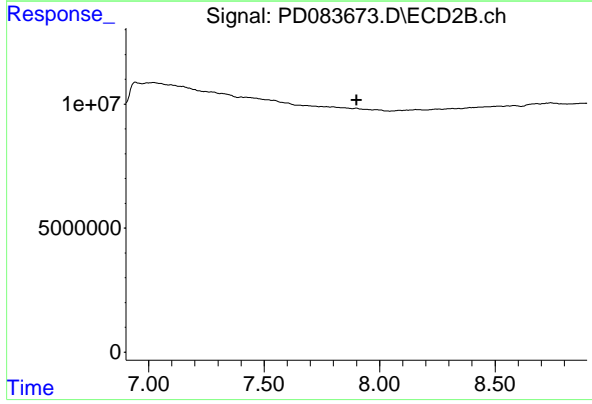
R.T.: 0.000 min  
 Exp R.T. : 6.592 min  
 Response: 0  
 Conc: N.D.



#27 Decachlorobiphenyl

R.T.: 0.000 min  
 Exp R.T. : 9.120 min  
 Response: 0  
 Conc: N.D.

Instrument :  
 ECD\_D  
 ClientSampleId :



#27 Decachlorobiphenyl

R.T.: 0.000 min  
 Exp R.T. : 7.900 min  
 Response: 0  
 Conc: N.D.