

Data Path : Z:\pestpcbsrv\HPCHEM1\ECD_D\Data\PD061321\
 Data File : PD063806.D
 Signal(s) : Signal #1: ECD1A.ch Signal #2: ECD2B.ch
 Acq On : 13 Jun 2021 15:05
 Operator : AR\AJ
 Sample : PIBLK13
 Misc :
 ALS Vial : 19 Sample Multiplier: 1

Instrument :
 ECD_D
 ClientSampleId :

Integration File signal 1: autoint1.e
 Integration File signal 2: autoint2.e
 Quant Time: Jun 14 03:15:36 2021
 Quant Method : Z:\pestpcbsrv\HPCHEM1\ECD_D\Method\PD061321CLP.M
 Quant Title : GC Extractables
 QLast Update : Mon Jun 14 02:58:10 2021
 Response via : Initial Calibration
 Integrator: ChemStation

Volume Inj. : 1 µl
 Signal #1 Phase : ZB-MR2 Signal #2 Phase: ZB-MR1
 Signal #1 Info : 30M x 0.32mm x0.2 Signal #2 Info : 30M x 0.32mm x 0.50µm

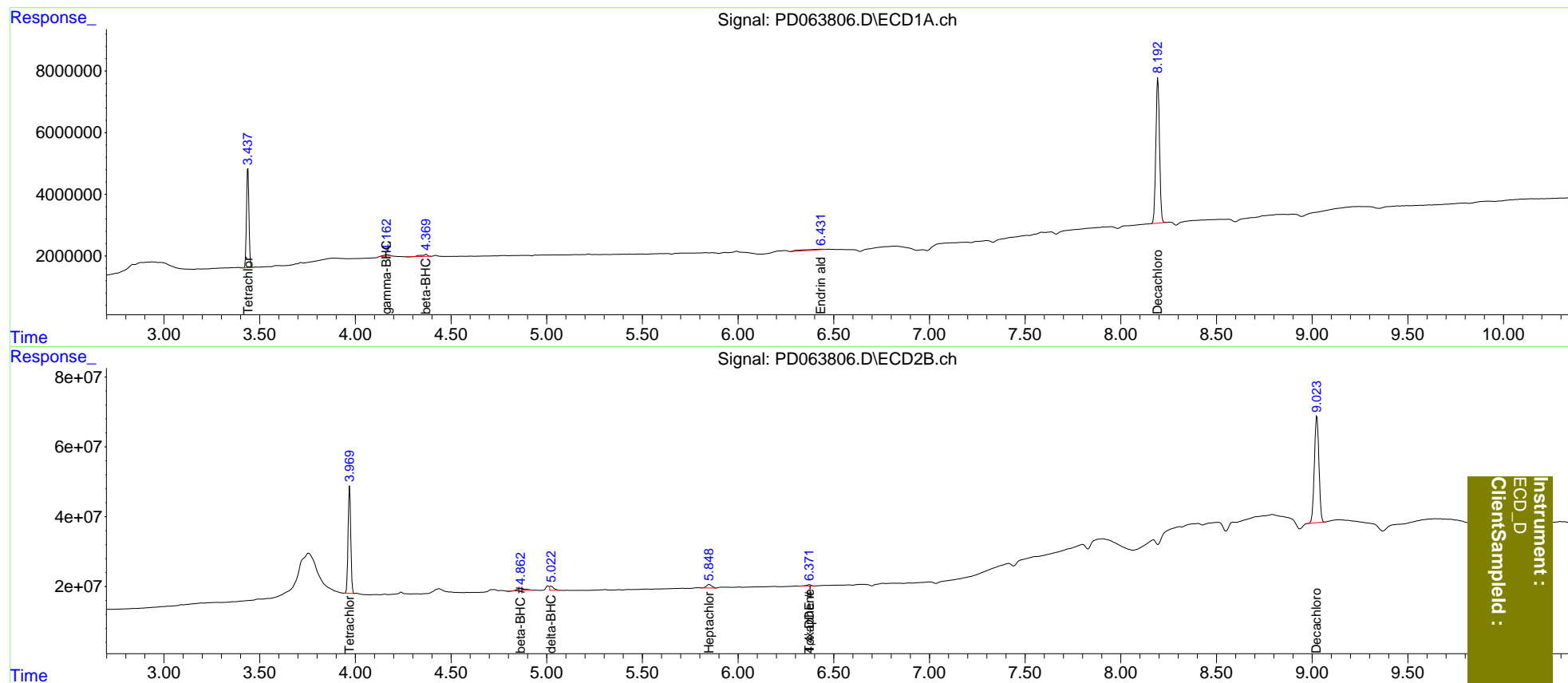
| Compound | RT#1 | RT#2 | Resp#1 | Resp#2 | ng/ml | ng/ml |
|-----------------------------|--------|--------|----------|----------|--------|---------|
| ----- | | | | | | |
| System Monitoring Compounds | | | | | | |
| 1) SA Tetrachlo... | 3.438 | 3.970 | 29079323 | 296.9E6 | 18.156 | 18.275 |
| 27) SA Decachlor... | 8.194 | 9.025 | 62787543 | 507.7E6 | 36.296 | 37.249 |
| Target Compounds | | | | | | |
| 3) MA gamma-BHC... | 4.164 | 0.000 | 1149780 | 0 | 0.463 | N.D. # |
| 6) B beta-BHC | 4.370f | 4.864f | 1627302 | 21343319 | 1.506 | 2.021 # |
| 7) B delta-BHC | 0.000 | 5.024 | 0 | 17782264 | N.D. | 0.688 |
| 8) B Heptachlo... | 0.000 | 5.849 | 0 | 19662487 | N.D. | 0.877 |
| 12) B 4,4'-DDE | 0.000 | 6.372f | 0 | 6781095 | N.D. | 0.319 |
| 18) B Endrin al... | 6.433 | 0.000 | 2264019 | 0 | 1.515 | N.D. # |
| 22) Toxaphene-1 | 0.000 | 6.372 | 0 | 6781095 | N.D. | 80.105 |
| ----- | | | | | | |

(f)=RT Delta > 1/2 Window (#)=Amounts differ by > 25% (m)=manual int.

Data Path : Z:\pestpcbsrv\HPCHEM1\ECD_D\Data\PD061321\
 Data File : PD063806.D
 Signal(s) : Signal #1: ECD1A.ch Signal #2: ECD2B.ch
 Acq On : 13 Jun 2021 15:05
 Operator : AR\AJ
 Sample : PIBLK13
 Misc :
 ALS Vial : 19 Sample Multiplier: 1

Integration File signal 1: autoint1.e
 Integration File signal 2: autoint2.e
 Quant Time: Jun 14 03:15:36 2021
 Quant Method : Z:\pestpcbsrv\HPCHEM1\ECD_D\Method\PD061321CLP.M
 Quant Title : GC Extractables
 QLast Update : Mon Jun 14 02:58:10 2021
 Response via : Initial Calibration
 Integrator: ChemStation

Volume Inj. : 1 µl
 Signal #1 Phase : ZB-MR2 Signal #2 Phase: ZB-MR1
 Signal #1 Info : 30M x 0.32mm x0.2 Signal #2 Info : 30M x 0.32mm x 0.50µm



Instrument :
 ECD_D
 ClientSampleId :