

Data Path : Z:\pestpcbsrv\HPCHEM1\ECD_D\Data\PD061421\
 Data File : PD063815.D
 Signal(s) : Signal #1: ECD1A.ch Signal #2: ECD2B.ch
 Acq On : 14 Jun 2021 11:08
 Operator : AR\AJ
 Sample : TOXAPH401
 Misc :
 ALS Vial : 7 Sample Multiplier: 1

Instrument :
 ECD_D
 ClientSampleId :
 TOXAPH4006

Integration File signal 1: autoint1.e
 Integration File signal 2: autoint2.e
 Quant Time: Jun 15 03:00:20 2021
 Quant Method : Z:\pestpcbsrv\HPCHEM1\ECD_D\Method\PD061421CLP.M
 Quant Title : GC Extractables
 QLast Update : Tue Jun 15 02:56:28 2021
 Response via : Initial Calibration
 Integrator: ChemStation

Volume Inj. : 1 µl
 Signal #1 Phase : ZB-MR2 Signal #2 Phase: ZB-MR1
 Signal #1 Info : 30M x 0.32mm x0.2 Signal #2 Info : 30M x 0.32mm x 0.50µm

Compound	RT#1	RT#2	Resp#1	Resp#2	ng/ml	ng/ml

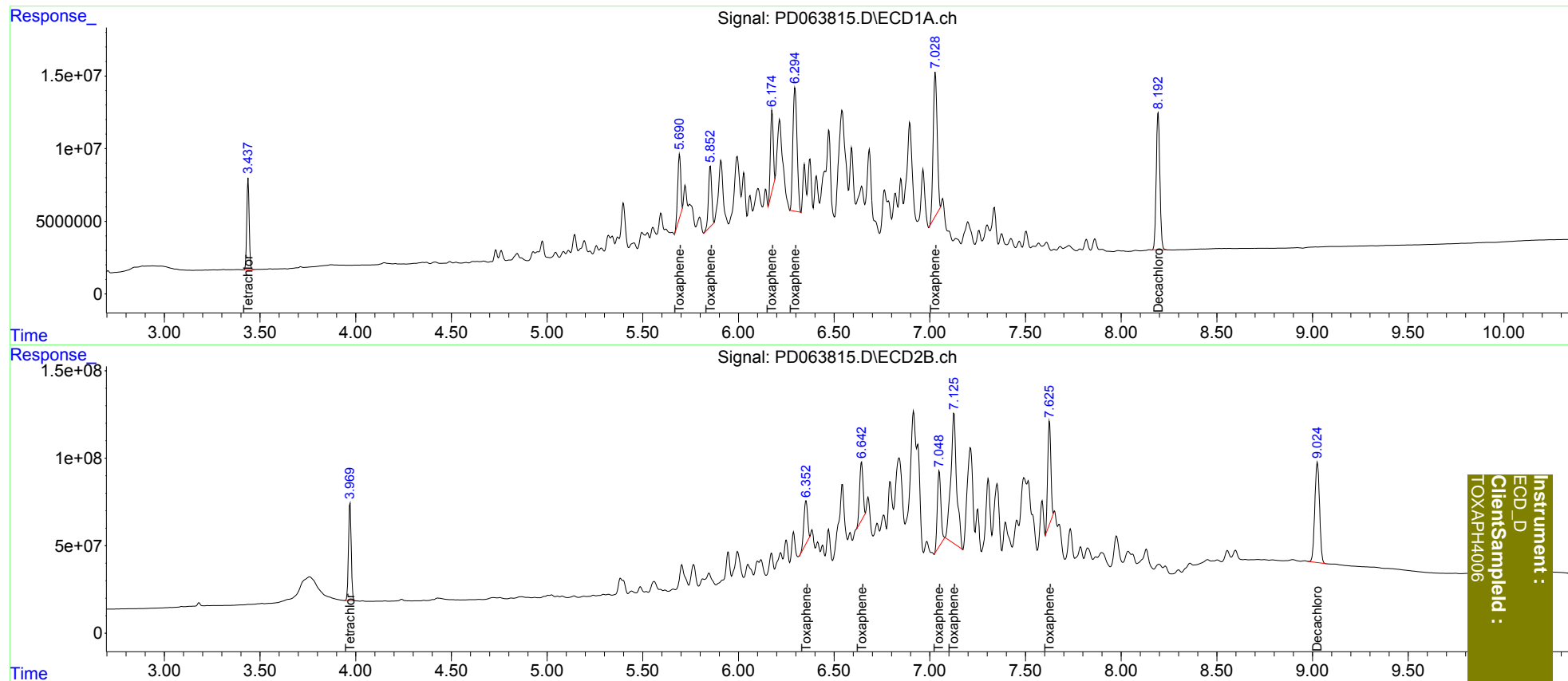
System Monitoring Compounds						
1) SA Tetrachlo...	3.438	3.970	55104931	553.2E6	39.382	39.555
27) SA Decachlor...	8.194	9.026	124.8E6	989.1E6	78.663	79.317
Target Compounds						
22) Toxaphene-1	5.693	6.353	48230243	331.8E6	4019.802	3964.755
23) Toxaphene-2	5.854	6.644	48565260	408.9E6	3958.731	3969.565
24) Toxaphene-3	6.176	7.050	55148778	551.6E6	3982.869	3962.098
25) Toxaphene-4	6.296	7.126	128.7E6	1582.5E6	3974.355	3970.356
26) Toxaphene-5	7.029	7.626	143.1E6	664.3E6	3931.095	3984.787

(f)=RT Delta > 1/2 Window (#)=Amounts differ by > 25% (m)=manual int.

Data Path : Z:\pestpcbsrv\HPCHEM1\ECD_D\Data\PD061421\
 Data File : PD063815.D
 Signal(s) : Signal #1: ECD1A.ch Signal #2: ECD2B.ch
 Acq On : 14 Jun 2021 11:08
 Operator : AR\AJ
 Sample : TOXAPH401
 Misc :
 ALS Vial : 7 Sample Multiplier: 1

Integration File signal 1: autoint1.e
 Integration File signal 2: autoint2.e
 Quant Time: Jun 15 03:00:20 2021
 Quant Method : Z:\pestpcbsrv\HPCHEM1\ECD_D\Method\PD061421CLP.M
 Quant Title : GC Extractables
 QLast Update : Tue Jun 15 02:56:28 2021
 Response via : Initial Calibration
 Integrator: ChemStation

Volume Inj. : 1 µl
 Signal #1 Phase : ZB-MR2 Signal #2 Phase: ZB-MR1
 Signal #1 Info : 30M x 0.32mm x0.2 Signal #2 Info : 30M x 0.32mm x 0.50µm



Instrument :
 ECD_D
 ClientSampleId :
 TOXAPH4006