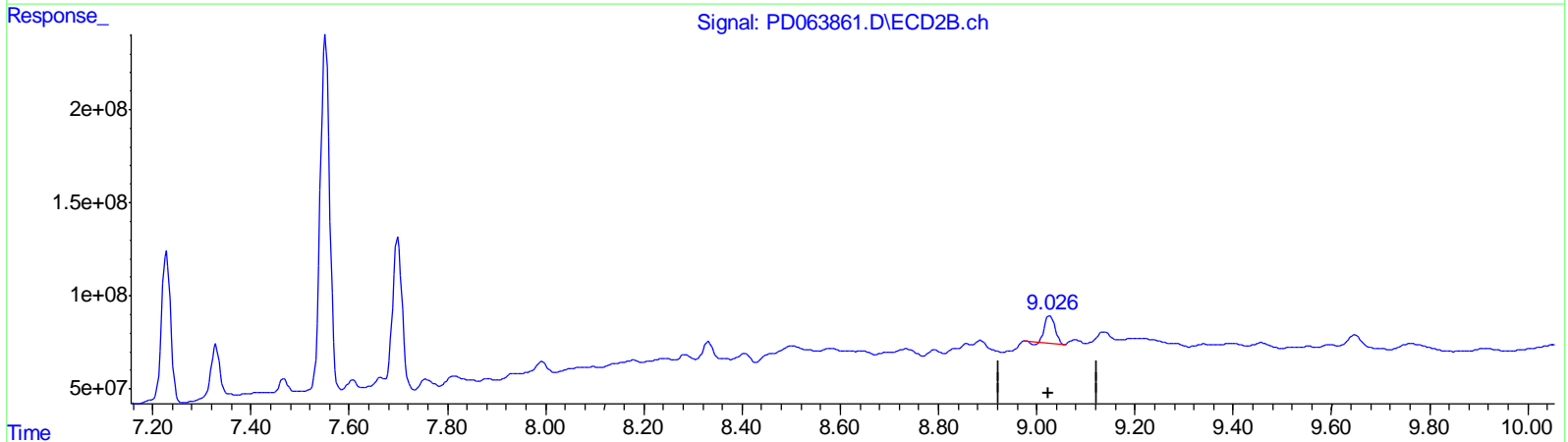
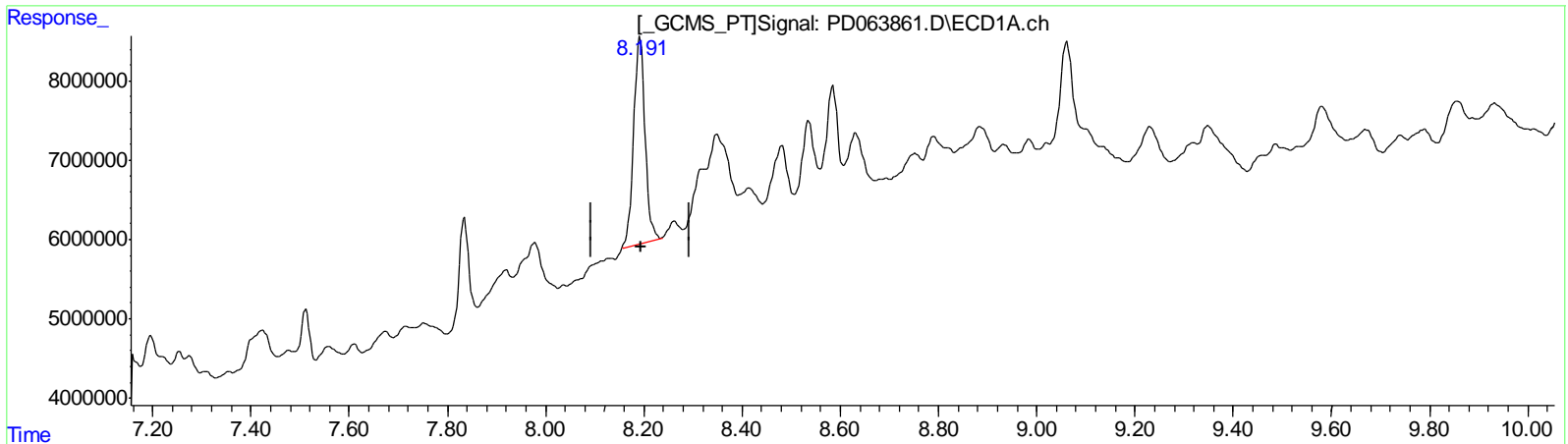


Data Path : Z:\pestpcbsrv\HPCHEM1\ECD\_D\Data\PD061521\  
 Data File : PD063861.D  
 Signal(s) : Signal #1: ECD1A.ch Signal #2: ECD2B.ch  
 Acq On : 15 Jun 2021 15:14  
 Operator : AR\AJ  
 Sample : M2596-03MSD  
 Misc :  
 ALS Vial : 8 Sample Multiplier: 1

Integration File signal 1: autoint1.e  
 Integration File signal 2: autoint2.e  
 Quant Time: Jun 16 02:20:35 2021  
 Quant Method : Z:\pestpcbsrv\HPCHEM1\ECD\_D\Method\PD061421CLP.M  
 Quant Title : GC Extractables  
 QLast Update : Tue Jun 15 03:10:50 2021  
 Response via : Initial Calibration  
 Integrator: ChemStation

Volume Inj. : 1 µl  
 Signal #1 Phase : ZB-MR2 Signal #2 Phase: ZB-MR1  
 Signal #1 Info : 30M x 0.32mm x0.2 Signal #2 Info : 30M x 0.32mm x 0.50µm



QEdit

(27) Decachlorobiphenyl (SA)

8.192min 24.162 ng/ml

response 41823966

(27) Decachlorobiphenyl #2 (SA)

9.027min 14.977 ng/ml

response 207700508

(+) = Expected Retention Time