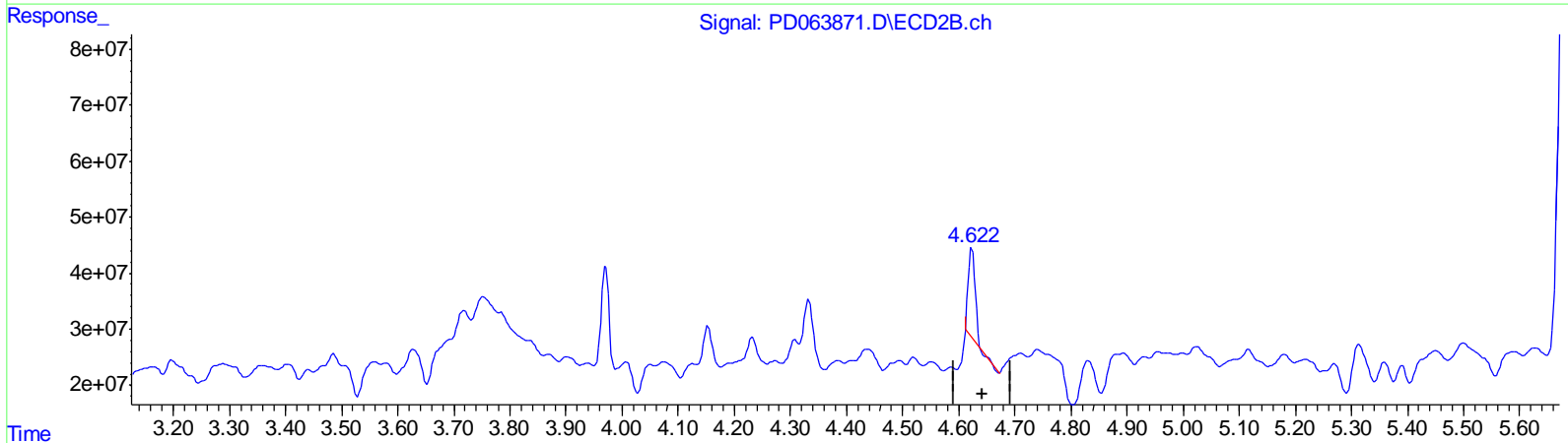
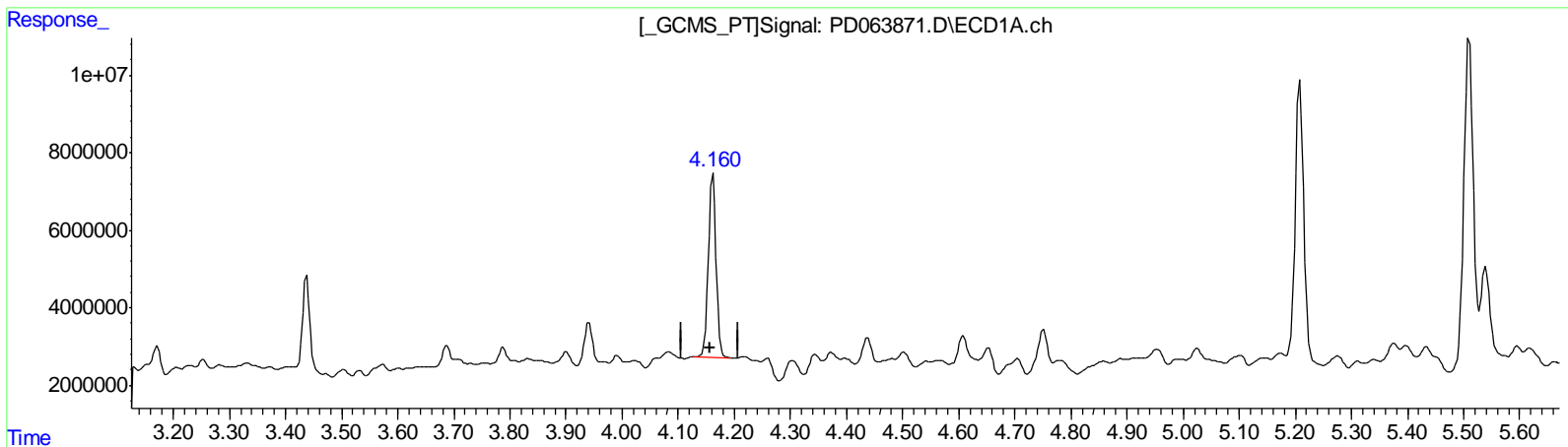


Data Path : Z:\pestpcbsrv\HPCHEM1\ECD_D\Data\PD061521\
 Data File : PD063871.D
 Signal(s) : Signal #1: ECD1A.ch Signal #2: ECD2B.ch
 Acq On : 15 Jun 2021 20:03
 Operator : AR\AJ
 Sample : M2596-13
 Misc :
 ALS Vial : 18 Sample Multiplier: 1

Integration File signal 1: autoint1.e
 Integration File signal 2: autoint2.e
 Quant Time: Jun 16 02:25:49 2021
 Quant Method : Z:\pestpcbsrv\HPCHEM1\ECD_D\Method\PD061421CLP.M
 Quant Title : GC Extractables
 QLast Update : Tue Jun 15 03:10:50 2021
 Response via : Initial Calibration
 Integrator: ChemStation

Volume Inj. : 1 µl
 Signal #1 Phase : ZB-MR2 Signal #2 Phase: ZB-MR1
 Signal #1 Info : 30M x 0.32mm x0.2 Signal #2 Info : 30M x 0.32mm x 0.50µm



QEdit

(3) gamma-BHC (Lindane) (MA)

4.162min 20.755 ng/ml

response 47234025

(3) gamma-BHC (Lindane) #2 (MA)

4.623min 5.945 ng/ml

response 135651650

(+) = Expected Retention Time