

Data Path : Z:\pestpcbsrv\HPCHEM1\ECD_D\Data\PD061821\
 Data File : PD063901.D
 Signal(s) : Signal #1: ECD1A.ch Signal #2: ECD2B.ch
 Acq On : 18 Jun 2021 08:56
 Operator : AR\AJ
 Sample : PIBLK20
 Misc :
 ALS Vial : 2 Sample Multiplier: 1

Instrument :
 ECD_D
ClientSampleId :
 PIBLK020

Integration File signal 1: autoint1.e
 Integration File signal 2: autoint2.e
 Quant Time: Jun 19 00:36:25 2021
 Quant Method : Z:\pestpcbsrv\HPCHEM1\ECD_D\Method\PD061421CLP.M
 Quant Title : GC Extractables
 QLast Update : Thu Jun 03 06:08:10 2021
 Response via : Initial Calibration
 Integrator: ChemStation

Volume Inj. : 1 µl
 Signal #1 Phase : ZB-MR2 Signal #2 Phase: ZB-MR1
 Signal #1 Info : 30M x 0.32mm x0.2 Signal #2 Info : 30M x 0.32mm x 0.50µm

Compound	RT#1	RT#2	Resp#1	Resp#2	ng/ml	ng/ml

System Monitoring Compounds						
1) SA Tetrachlo...	3.438	3.969	29649328	302.2E6	21.601	21.466
2) SA Decachlor...	8.192	9.023	62306264	478.5E6	38.349	32.612

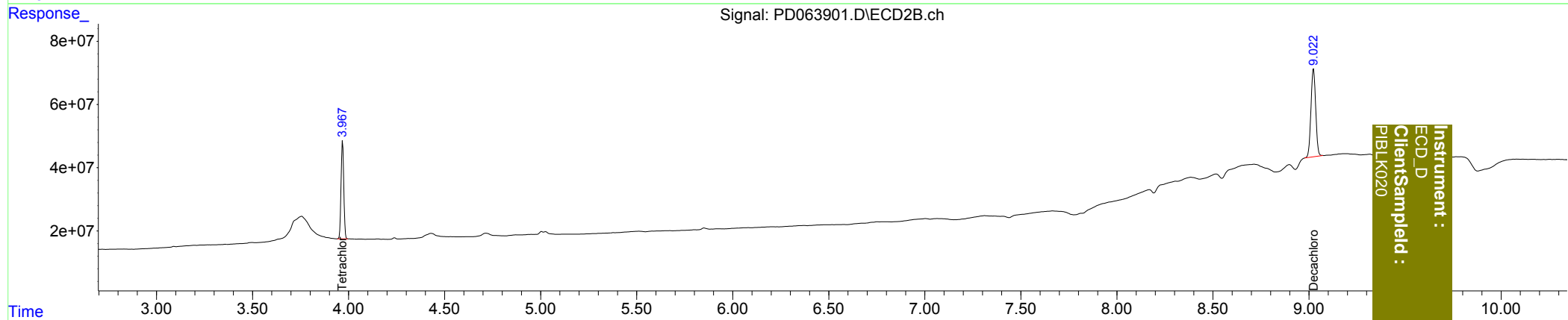
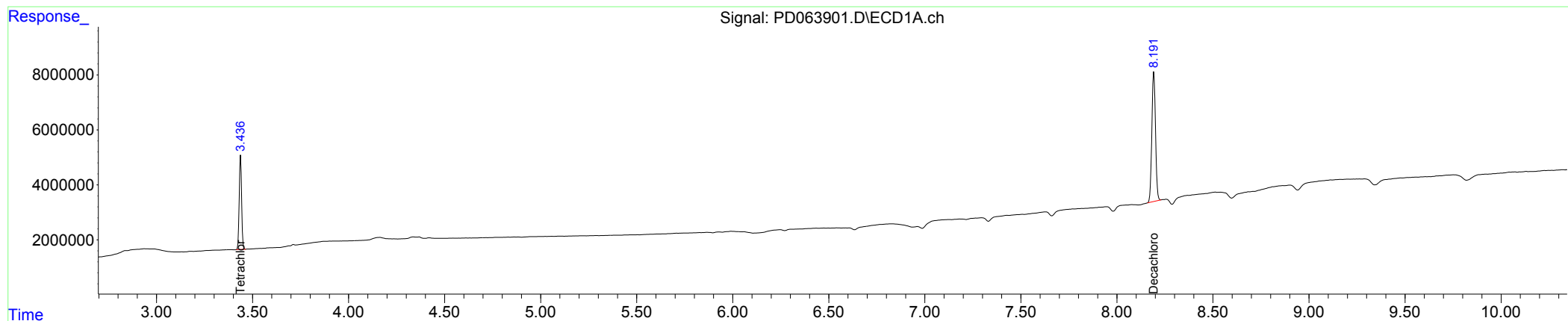
Target Compounds

(f)=RT Delta > 1/2 Window (#)=Amounts differ by > 25% (m)=manual int.

Data Path : Z:\pestpcbsrv\HPCHEM1\ECD_D\Data\PD061821\
Data File : PD063901.D
Signal(s) : Signal #1: ECD1A.ch Signal #2: ECD2B.ch
Acq On : 18 Jun 2021 08:56
Operator : AR\AJ
Sample : PIBLK20
Misc :
ALS Vial : 2 Sample Multiplier: 1

Integration File signal 1: autoint1.e
Integration File signal 2: autoint2.e
Quant Time: Jun 19 00:36:25 2021
Quant Method : Z:\pestpcbsrv\HPCHEM1\ECD_D\Method\PD061421CLP.M
Quant Title : GC Extractables
QLast Update : Thu Jun 03 06:08:10 2021
Response via : Initial Calibration
Integrator: ChemStation

Volume Inj. : 1 µl
Signal #1 Phase : ZB-MR2 Signal #2 Phase: ZB-MR1
Signal #1 Info : 30M x 0.32mm x0.2 Signal #2 Info : 30M x 0.32mm x 0.50µm



Instrument :
ECD_D
ClientSampled :
PIBLK020