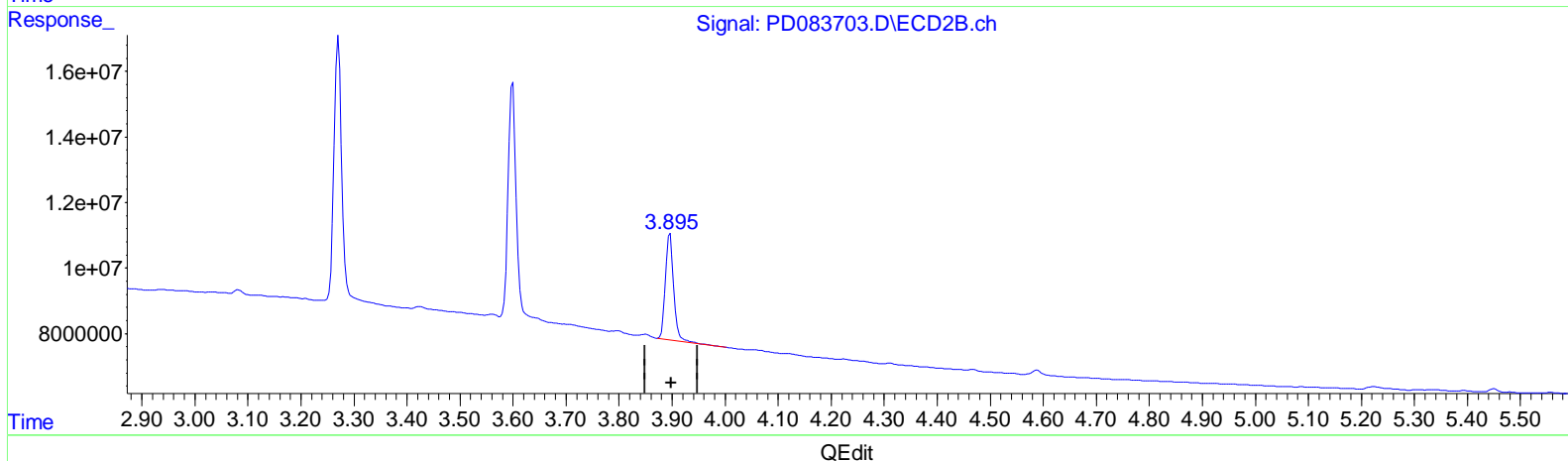
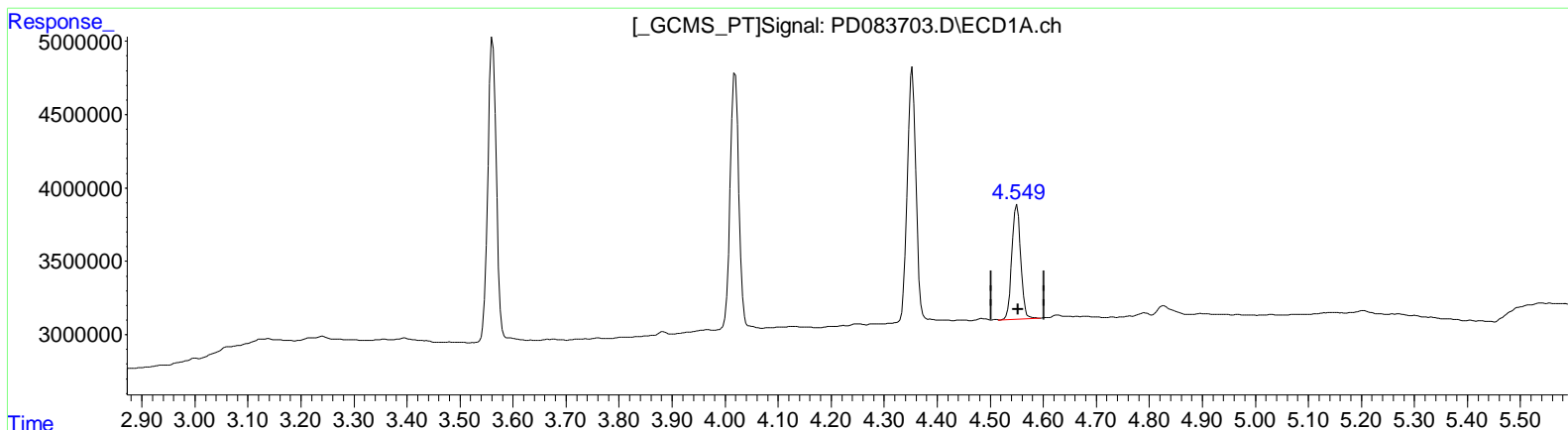


Data Path : Z:\pestpcbsrv\HPCHEM1\ECD_D\Data\PD061824\
 Data File : PD083703.D
 Signal(s) : Signal #1: ECD1A.ch Signal #2: ECD2B.ch
 Acq On : 18 Jun 2024 09:49
 Operator : ARVAJ
 Sample : PEM119
 Misc :
 ALS Vial : 3 Sample Multiplier: 1

Integration File signal 1: autoint1.e
 Integration File signal 2: autoint2.e
 Quant Time: Jun 18 22:59:33 2024
 Quant Method : Z:\pestpcbsrv\HPCHEM1\ECD_D\Method\PD060724CLP.M
 Quant Title : GC Extractables
 QLast Update : Fri Jun 07 04:03:14 2024
 Response via : Initial Calibration
 Integrator: ChemStation

Volume Inj. : 1 µl
 Signal #1 Phase : ZB-MR1 Signal #2 Phase: ZB-MR2
 Signal #1 Info : 30M x 0.32mm x0.5 Signal #2 Info : 30M x 0.32mm x 0.25µm



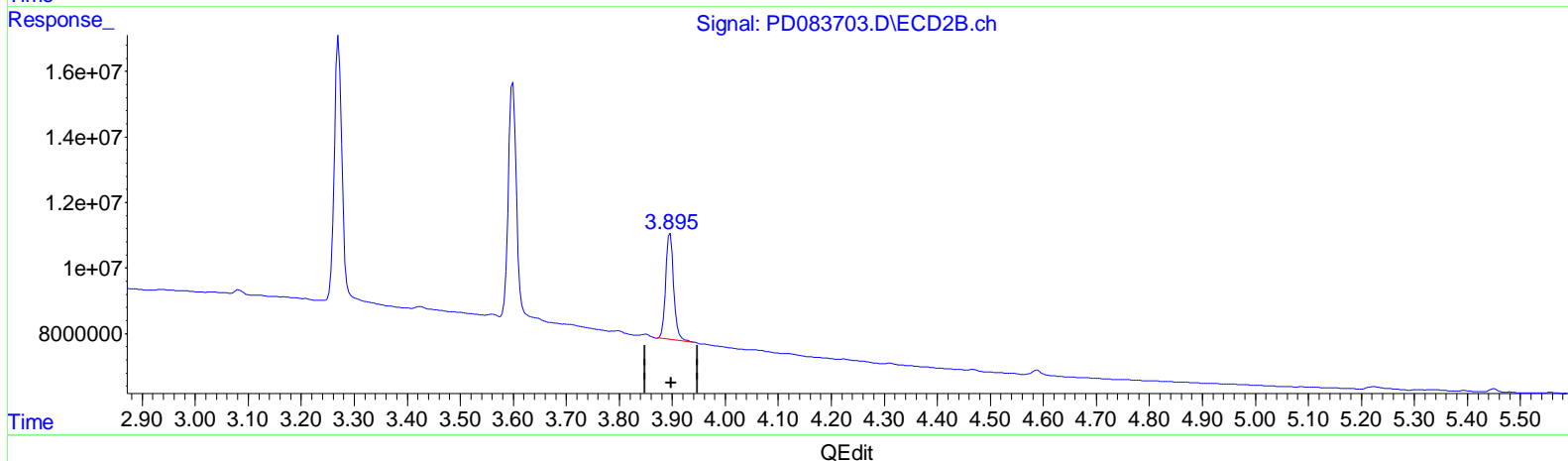
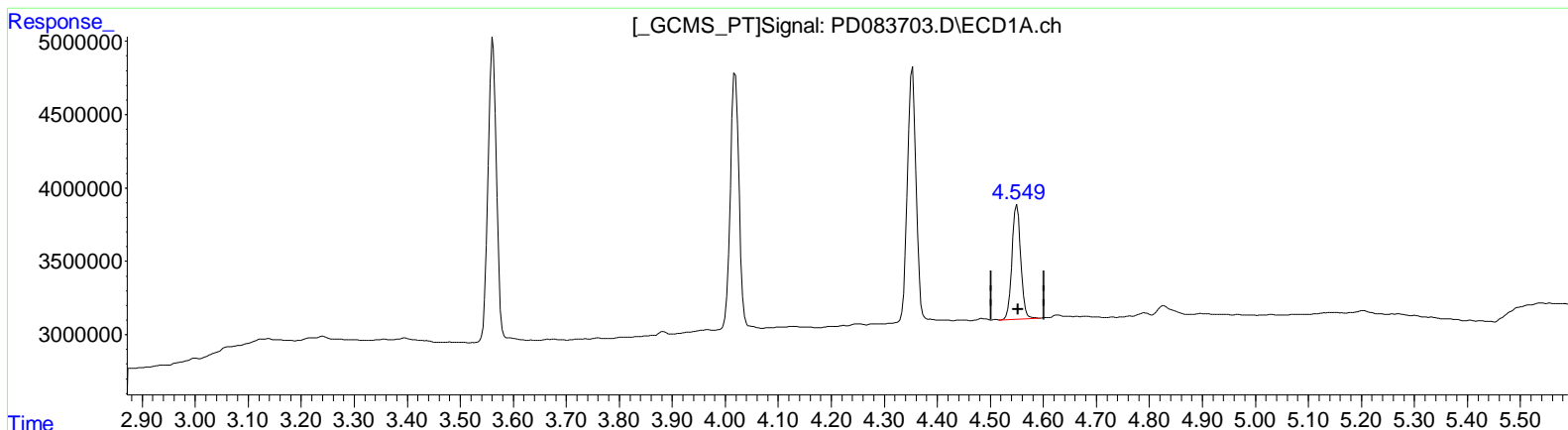
(6) beta-BHC (B)
 4.550min 8.938 ng/ml
 response 9008075

(6) beta-BHC #2 (B)
 3.896min 9.838 ng/ml
 response 35103839

Data Path : Z:\pestpcbsrv\HPCHEM1\ECD_D\Data\PD061824\
 Data File : PD083703.D
 Signal(s) : Signal #1: ECD1A.ch Signal #2: ECD2B.ch
 Acq On : 18 Jun 2024 09:49
 Operator : ARVAJ
 Sample : PEM119
 Misc :
 ALS Vial : 3 Sample Multiplier: 1

Integration File signal 1: autoint1.e
 Integration File signal 2: autoint2.e
 Quant Time: Jun 18 22:59:33 2024
 Quant Method : Z:\pestpcbsrv\HPCHEM1\ECD_D\Method\PD060724CLP.M
 Quant Title : GC Extractables
 QLast Update : Fri Jun 07 04:03:14 2024
 Response via : Initial Calibration
 Integrator: ChemStation

Volume Inj. : 1 µl
 Signal #1 Phase : ZB-MR1 Signal #2 Phase: ZB-MR2
 Signal #1 Info : 30M x 0.32mm x0.5 Signal #2 Info : 30M x 0.32mm x 0.25µm



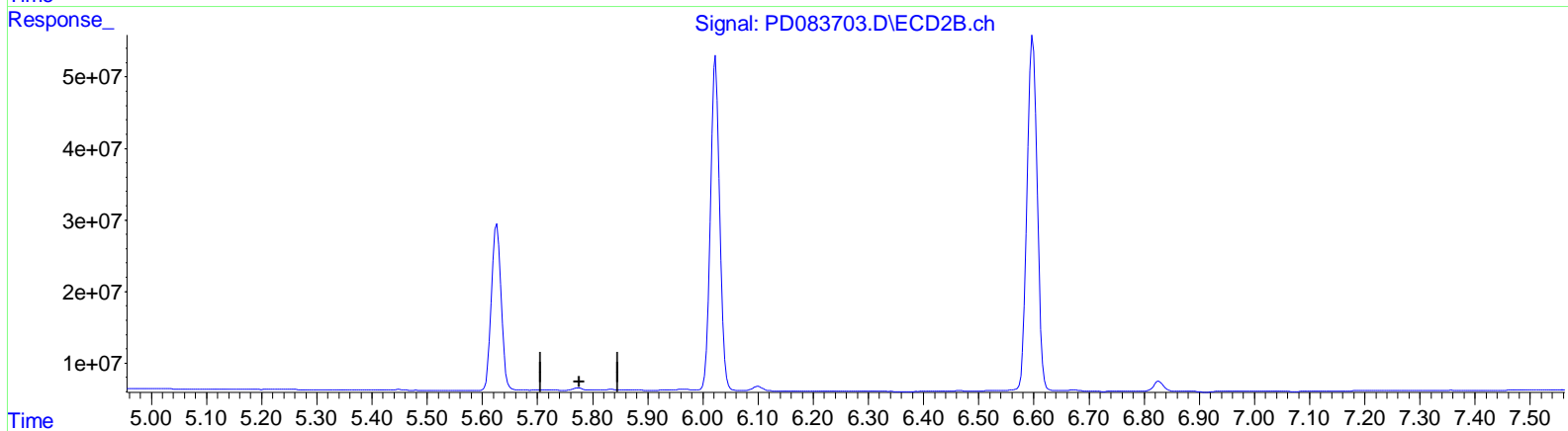
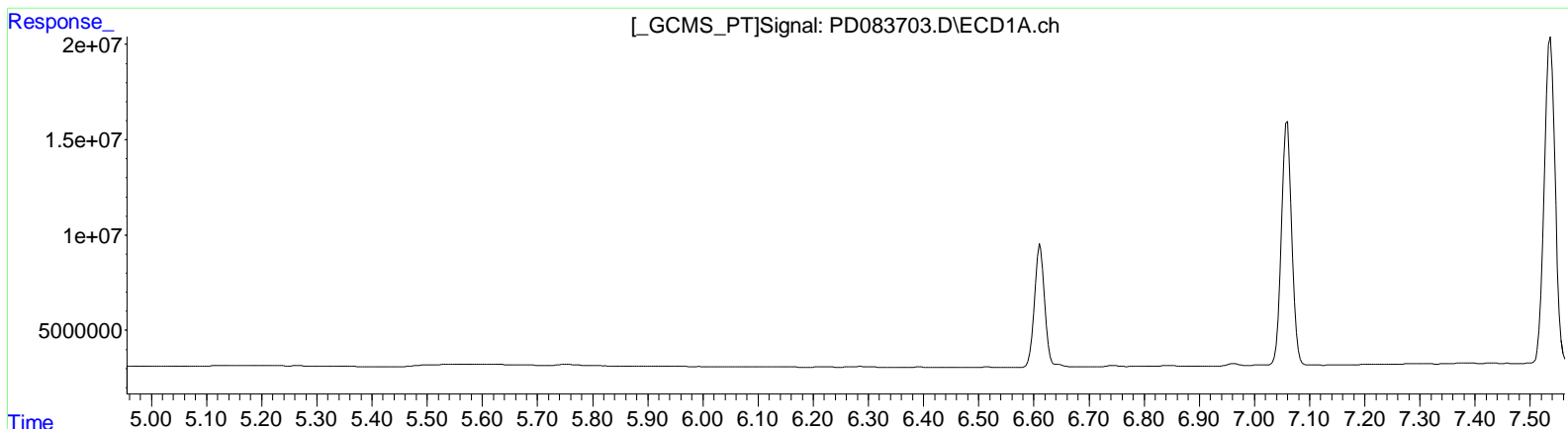
(6) beta-BHC (B)
 4.550min 8.938 ng/ml
 response 9008075

(6) beta-BHC #2 (B)
 3.895min 9.559 ng/ml m
 response 34108452

Data Path : Z:\pestpcbsrv\HPCHEM1\ECD_D\Data\PD061824\
 Data File : PD083703.D
 Signal(s) : Signal #1: ECD1A.ch Signal #2: ECD2B.ch
 Acq On : 18 Jun 2024 09:49
 Operator : ARVAJ
 Sample : PEM119
 Misc :
 ALS Vial : 3 Sample Multiplier: 1

Integration File signal 1: autoint1.e
 Integration File signal 2: autoint2.e
 Quant Time: Jun 18 22:59:33 2024
 Quant Method : Z:\pestpcbsrv\HPCHEM1\ECD_D\Method\PD060724CLP.M
 Quant Title : GC Extractables
 QLast Update : Fri Jun 07 04:03:14 2024
 Response via : Initial Calibration
 Integrator: ChemStation

Volume Inj. : 1 µl
 Signal #1 Phase : ZB-MR1 Signal #2 Phase: ZB-MR2
 Signal #1 Info : 30M x 0.32mm x0.5 Signal #2 Info : 30M x 0.32mm x 0.25µm



QEdit

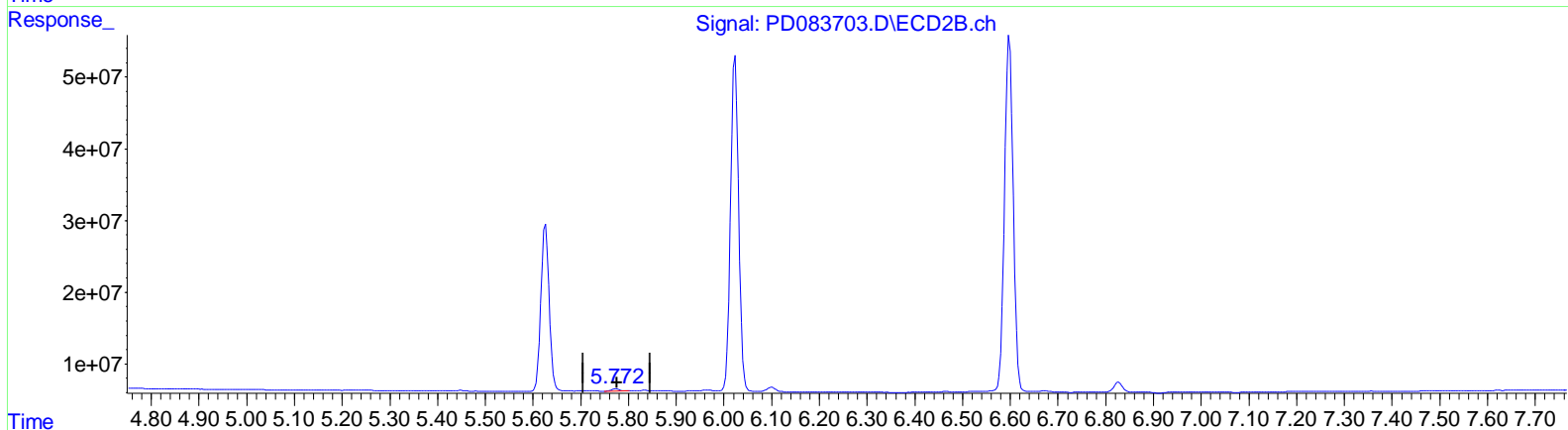
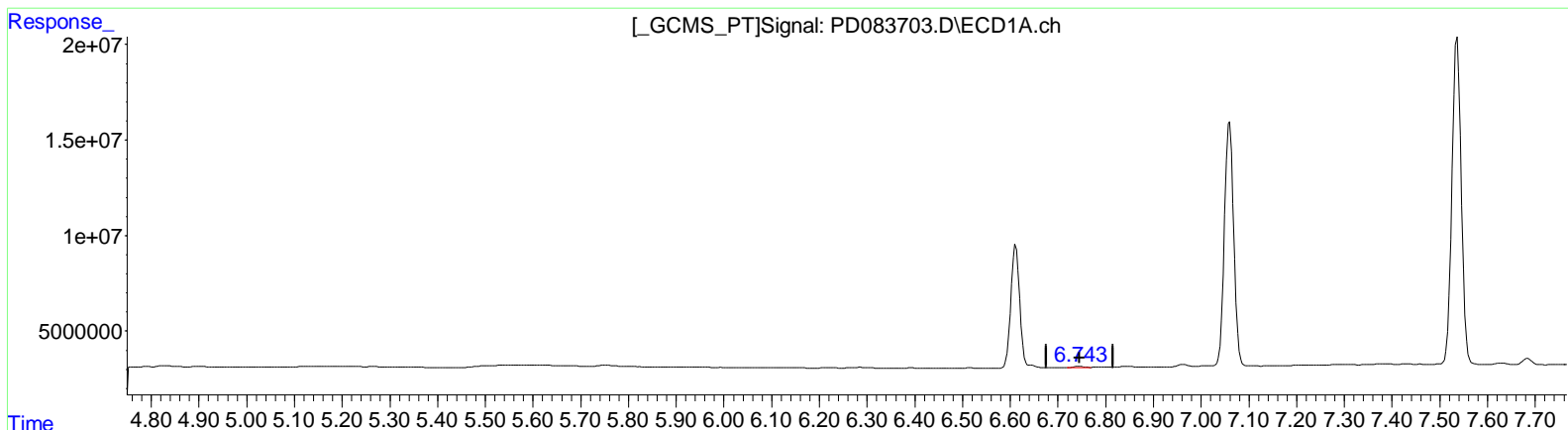
(16) 4,4'-DDD (A)
 0.000min 0.000 ng/ml
 response 0

(16) 4,4'-DDD #2 (A)
 0.000min 0.000 ng/ml
 response 0

Data Path : Z:\pestpcbsrv\HPCHEM1\ECD_D\Data\PD061824\
 Data File : PD083703.D
 Signal(s) : Signal #1: ECD1A.ch Signal #2: ECD2B.ch
 Acq On : 18 Jun 2024 09:49
 Operator : ARVAJ
 Sample : PEM119
 Misc :
 ALS Vial : 3 Sample Multiplier: 1

Integration File signal 1: autoint1.e
 Integration File signal 2: autoint2.e
 Quant Time: Jun 18 22:59:33 2024
 Quant Method : Z:\pestpcbsrv\HPCHEM1\ECD_D\Method\PD060724CLP.M
 Quant Title : GC Extractables
 QLast Update : Fri Jun 07 04:03:14 2024
 Response via : Initial Calibration
 Integrator: ChemStation

Volume Inj. : 1 µl
 Signal #1 Phase : ZB-MR1 Signal #2 Phase: ZB-MR2
 Signal #1 Info : 30M x 0.32mm x0.5 Signal #2 Info : 30M x 0.32mm x 0.25µm



QEdit

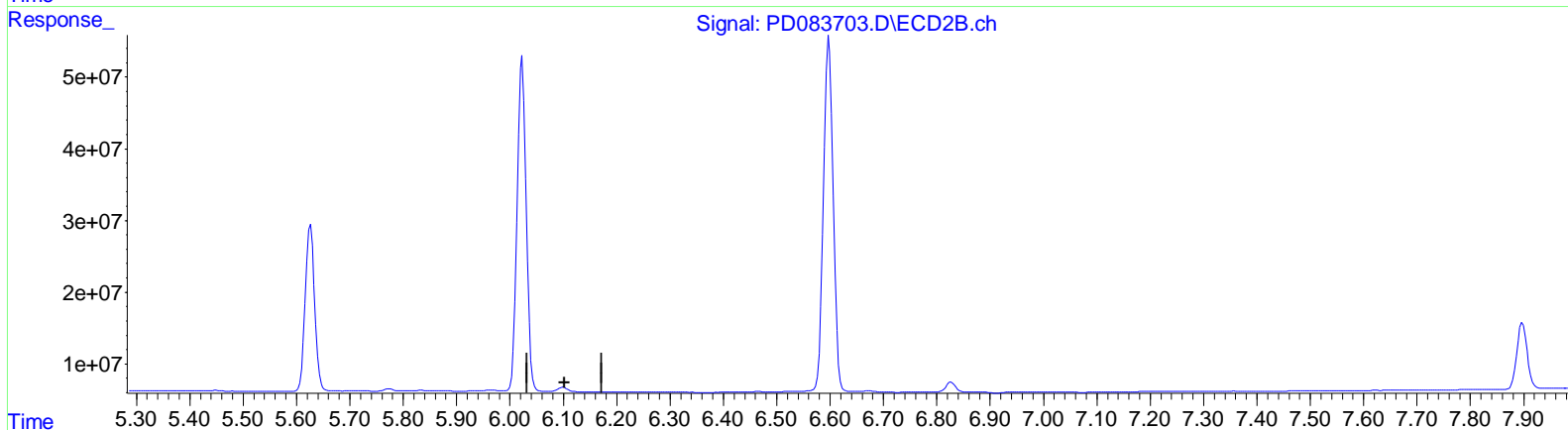
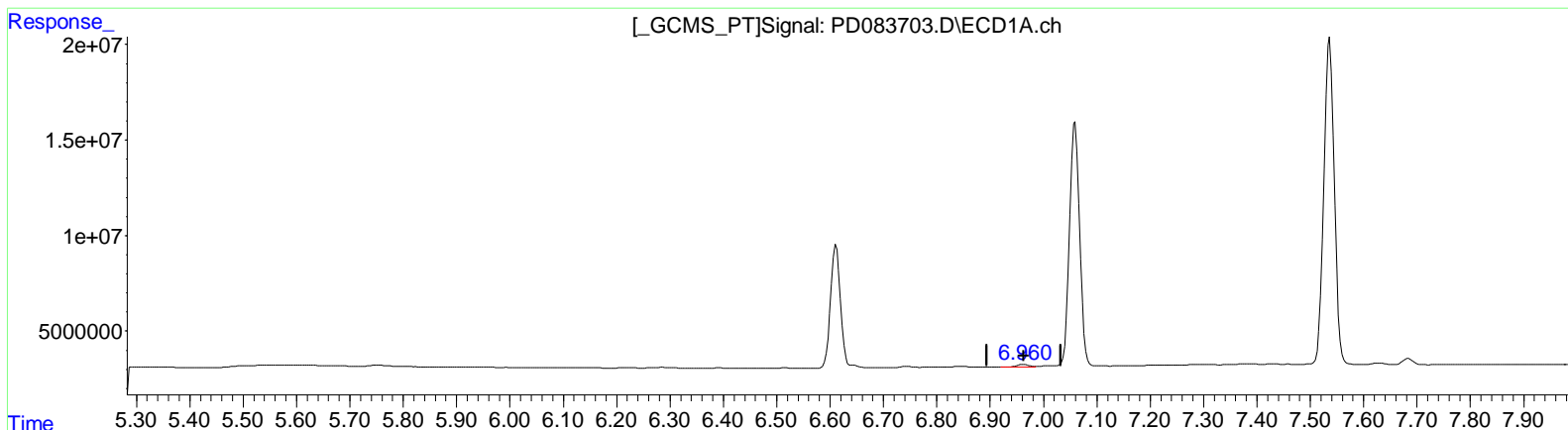
(16) 4,4'-DDD (A)
 6.743min 0.632 ng/ml m
 response 925542

(16) 4,4'-DDD #2 (A)
 5.772min 0.666 ng/ml m
 response 3753944

Data Path : Z:\pestpcbsrv\HPCHEM1\ECD_D\Data\PD061824\
 Data File : PD083703.D
 Signal(s) : Signal #1: ECD1A.ch Signal #2: ECD2B.ch
 Acq On : 18 Jun 2024 09:49
 Operator : ARVAJ
 Sample : PEM119
 Misc :
 ALS Vial : 3 Sample Multiplier: 1

Integration File signal 1: autoint1.e
 Integration File signal 2: autoint2.e
 Quant Time: Jun 18 22:59:33 2024
 Quant Method : Z:\pestpcbsrv\HPCHEM1\ECD_D\Method\PD060724CLP.M
 Quant Title : GC Extractables
 QLast Update : Fri Jun 07 04:03:14 2024
 Response via : Initial Calibration
 Integrator: ChemStation

Volume Inj. : 1 µl
 Signal #1 Phase : ZB-MR1 Signal #2 Phase: ZB-MR2
 Signal #1 Info : 30M x 0.32mm x0.5 Signal #2 Info : 30M x 0.32mm x 0.25µm



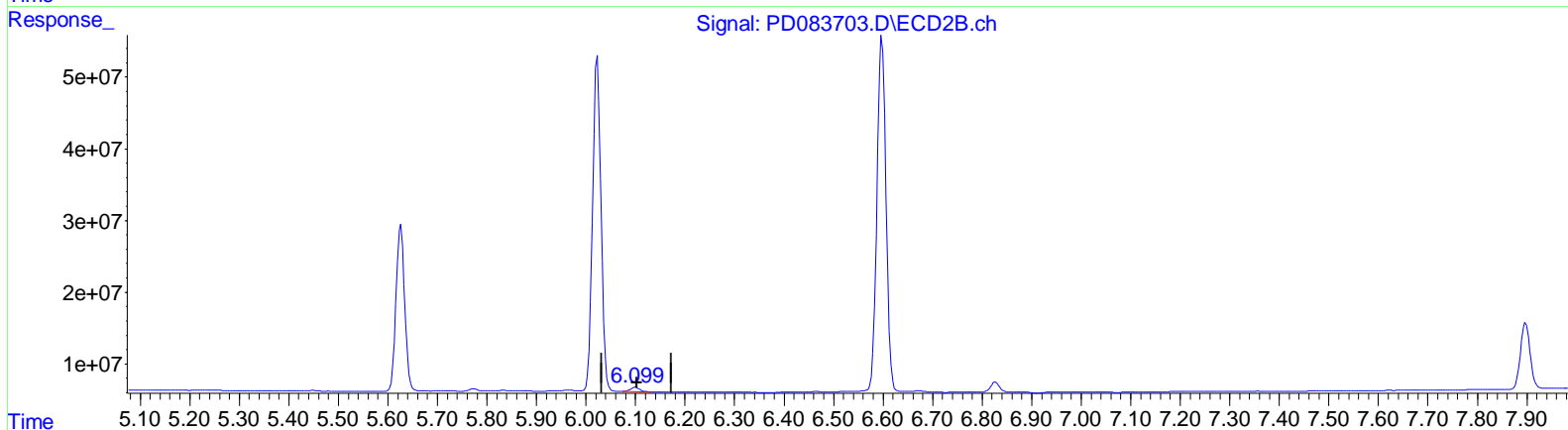
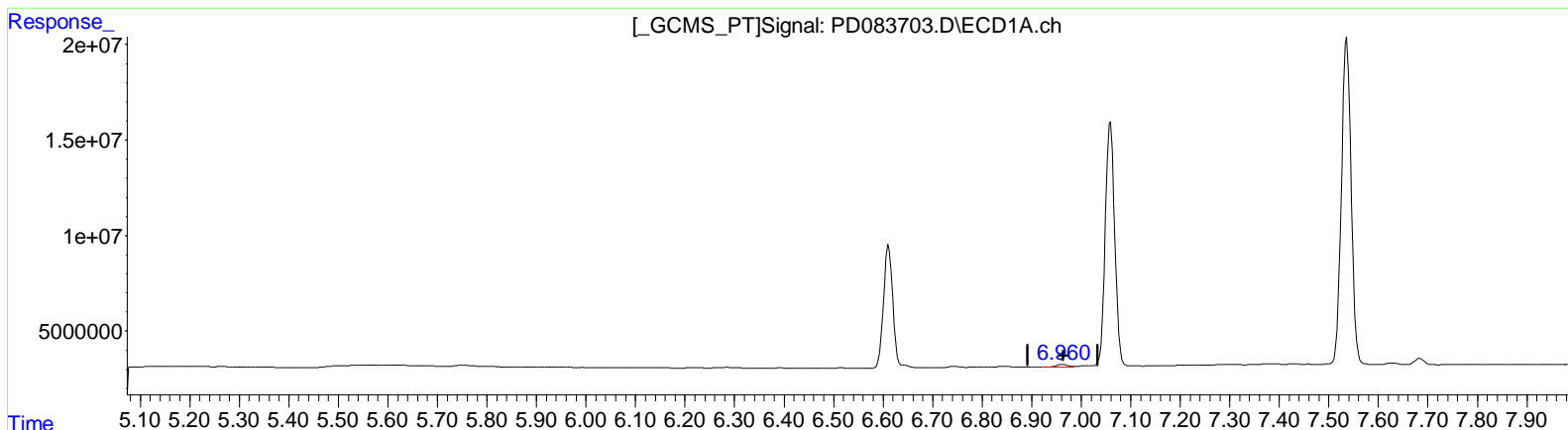
(18) Endrin aldehyde (B)
 6.962min 1.461 ng/ml
 response 1948673

(18) Endrin aldehyde #2 (B)
 0.000min 0.000 ng/ml
 response 0

Data Path : Z:\pestpcbsrv\HPCHEM1\ECD_D\Data\PD061824\
 Data File : PD083703.D
 Signal(s) : Signal #1: ECD1A.ch Signal #2: ECD2B.ch
 Acq On : 18 Jun 2024 09:49
 Operator : ARVAJ
 Sample : PEM119
 Misc :
 ALS Vial : 3 Sample Multiplier: 1

Integration File signal 1: autoint1.e
 Integration File signal 2: autoint2.e
 Quant Time: Jun 18 22:59:33 2024
 Quant Method : Z:\pestpcbsrv\HPCHEM1\ECD_D\Method\PD060724CLP.M
 Quant Title : GC Extractables
 QLast Update : Fri Jun 07 04:03:14 2024
 Response via : Initial Calibration
 Integrator: ChemStation

Volume Inj. : 1 µl
 Signal #1 Phase : ZB-MR1 Signal #2 Phase: ZB-MR2
 Signal #1 Info : 30M x 0.32mm x0.5 Signal #2 Info : 30M x 0.32mm x 0.25µm



QEdit

(18) Endrin aldehyde (B)
 6.962min 1.461 ng/ml
 response 1948673

(18) Endrin aldehyde #2 (B)
 6.099min 1.652 ng/ml m
 response 7911086

Data Path : Z:\pestpcbsrv\HPCHEM1\ECD_D\Data\PD061824\
 Data File : PD083703.D
 Signal(s) : Signal #1: ECD1A.ch Signal #2: ECD2B.ch
 Acq On : 18 Jun 2024 09:49
 Operator : AR\AJ
 Sample : PEM119
 Misc :
 ALS Vial : 3 Sample Multiplier: 1

Integration File signal 1: autoint1.e
 Integration File signal 2: autoint2.e
 Quant Time: Jun 18 22:59:33 2024
 Quant Method : Z:\pestpcbsrv\HPCHEM1\ECD_D\Method\PD060724CLP.M
 Quant Title : GC Extractables
 QLast Update : Fri Jun 07 04:03:14 2024
 Response via : Initial Calibration
 Integrator: ChemStation

Volume Inj. : 1 µl
 Signal #1 Phase : ZB-MR1 Signal #2 Phase: ZB-MR2
 Signal #1 Info : 30M x 0.32mm x 0.5 Signal #2 Info : 30M x 0.32mm x 0.25µm

Compound	RT#1	RT#2	Resp#1	Resp#2	ng/ml	ng/ml

System Monitoring Compounds						
1) SA Tetrachloro...	3.562	2.771	22898681	105.7E6	17.543	19.387
27) SA Decachloro...	9.117	7.898	45169215	125.7E6	23.229	20.698
Target Compounds						
2) A alpha-BHC	4.019	3.271	19924132	84876272	8.977	9.956
3) MA gamma-BHC...	4.353	3.599	19738950	77527643	9.073	9.928
6) B beta-BHC	4.550	3.895	9008075	34108452	8.938	9.559m
14) MA Endrin	6.611	5.626	81651024	283.1E6	48.335	43.778
16) A 4,4'-DDD	6.743	5.772	925542	3753944	0.632m	0.666m
17) MA 4,4'-DDT	7.059	6.023	170.1E6	556.4E6	112.930	98.287
18) B Endrin al...	6.962	6.099	1948673	7911086	1.461	1.652m
20) A Methoxychlor	7.536	6.598	232.5E6	632.3E6	268.751	217.537
21) B Endrin ke...	7.684	6.827	4329446	17362247	2.322	2.583

(f)=RT Delta > 1/2 Window (#)=Amounts differ by > 25% (m)=manual int.

Data Path : Z:\pestpcbsrv\HPCHEM1\ECD_D\Data\PD061824\
 Data File : PD083703.D
 Signal(s) : Signal #1: ECD1A.ch Signal #2: ECD2B.ch
 Acq On : 18 Jun 2024 09:49
 Operator : ARVAJ
 Sample : PEM119
 Misc :
 ALS Vial : 3 Sample Multiplier: 1

Integration File signal 1: autoint1.e
 Integration File signal 2: autoint2.e
 Quant Time: Jun 18 22:59:33 2024
 Quant Method : Z:\pestpcbsrv\HPCHEM1\ECD_D\Method\PD060724CLP.M
 Quant Title : GC Extractables
 QLast Update : Fri Jun 07 04:03:14 2024
 Response via : Initial Calibration
 Integrator: ChemStation

Volume Inj. : 1 µl
 Signal #1 Phase : ZB-MR1 Signal #2 Phase: ZB-MR2
 Signal #1 Info : 30M x 0.32mm x0.5 Signal #2 Info : 30M x 0.32mm x 0.25µm

