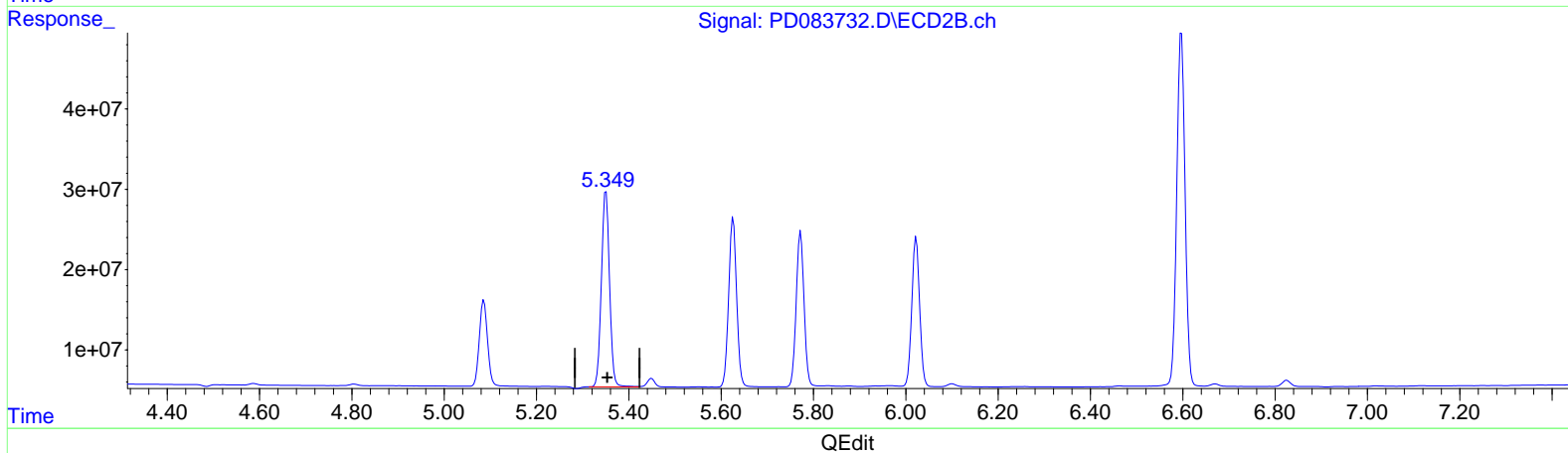
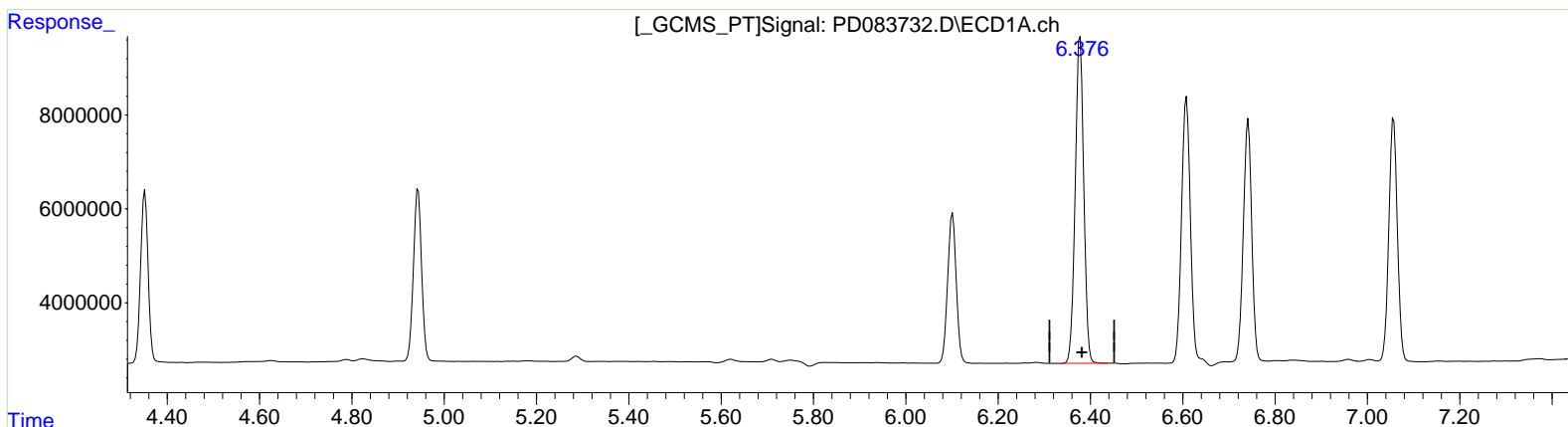


Data Path : Z:\pestpcbsrv\HPCHEM1\ECD_D\Data\PD061824\
 Data File : PD083732.D
 Signal(s) : Signal #1: ECD1A.ch Signal #2: ECD2B.ch
 Acq On : 18 Jun 2024 22:00
 Operator : AR\AJ
 Sample : INDA315
 Misc :
 ALS Vial : 8 Sample Multiplier: 1

Integration File signal 1: autoint1.e
 Integration File signal 2: autoint2.e
 Quant Time: Jun 19 04:37:54 2024
 Quant Method : Z:\pestpcbsrv\HPCHEM1\ECD_D\Method\PD060724CLP.M
 Quant Title : GC Extractables
 QLast Update : Fri Jun 07 04:03:14 2024
 Response via : Initial Calibration
 Integrator: ChemStation

Volume Inj. : 1 µl
 Signal #1 Phase : ZB-MR1 Signal #2 Phase: ZB-MR2
 Signal #1 Info : 30M x 0.32mm x 0.5 Signal #2 Info : 30M x 0.32mm x 0.25µm



(13) Dieldrin (MA)
 6.377min 43.350 ng/ml
 response 89634228

(13) Dieldrin #2 (MA)
 5.349min 40.931 ng/ml m
 response 298190800