

Data Path : Z:\pestpcbsrv\HPCHEM1\ECD_D\Data\PD061824\
 Data File : PD083722.D
 Signal(s) : Signal #1: ECD1A.ch Signal #2: ECD2B.ch
 Acq On : 18 Jun 2024 19:20
 Operator : AR\AJ
 Sample : P2898-10
 Misc :
 ALS Vial : 21 Sample Multiplier: 1

Integration File signal 1: autoint1.e
 Integration File signal 2: autoint2.e
 Quant Time: Jun 18 23:05:08 2024
 Quant Method : Z:\pestpcbsrv\HPCHEM1\ECD_D\Method\PD060724CLP.M
 Quant Title : GC Extractables
 QLast Update : Fri Jun 07 04:03:14 2024
 Response via : Initial Calibration
 Integrator: ChemStation

Volume Inj. : 1 µl
 Signal #1 Phase : ZB-MR2 Signal #2 Phase: ZB-MR2
 Signal #1 Info : 30M x 0.32mm x0.5 Signal #2 Info : 30M x 0.32mm x 0.25µm

	Compound	RT#1	RT#2	Resp#1	Resp#2	ng/ml	ng/ml

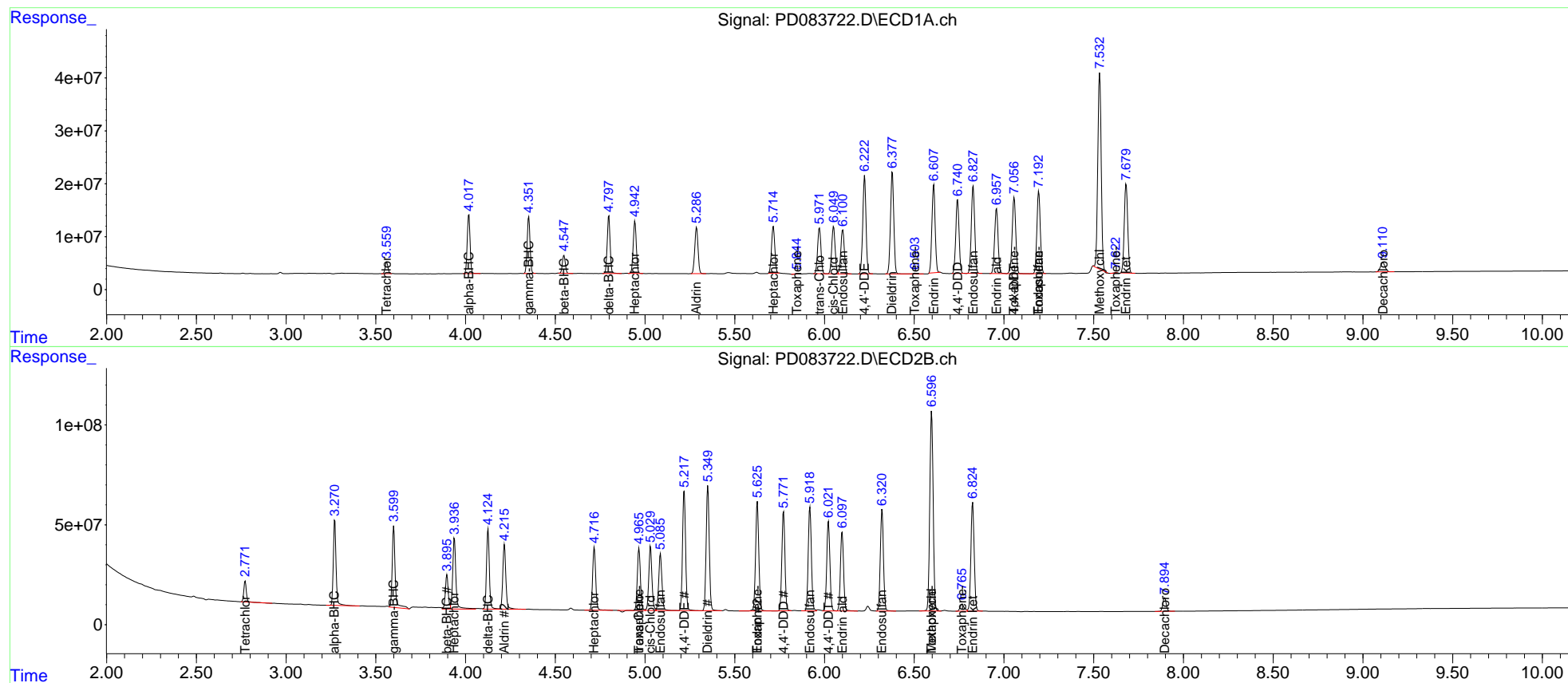
System Monitoring Compounds							
1)	SA Tetrachlo...	3.561	2.772	23709492	105.7E6	18.164	19.391
27)	SA Decachlor...	9.112	7.896	32242823	90305773	16.581	14.872
Target Compounds							
2)	A alpha-BHC	4.018	3.271	122.8E6	455.2E6	55.310	53.401
3)	MA gamma-BHC...	4.352	3.600	119.7E6	464.2E6	55.001	59.446
4)	MA Heptachlor	4.944	3.938	118.4E6	439.3E6	48.726	56.112
5)	MB Aldrin	5.287	4.217	111.8E6	384.5E6	47.039	49.754
6)	B beta-BHC	4.549	3.897	38155636	188.9E6	37.861	52.951 #
7)	B delta-BHC	4.798	4.125	123.9E6	441.6E6	47.168	51.780
8)	Heptachlo...	5.715	4.718	111.5E6	376.6E6	53.971	51.472
9)	A Endosulfan I	6.102	5.086	111.2E6	357.4E6	56.852	54.061
10)	B trans-Chl...	5.972	4.966	112.5E6	360.8E6	55.240	49.680
11)	B cis-Chlor...	6.051	5.031	117.0E6	391.2E6	56.165	53.137
12)	B 4,4'-DDE	6.224	5.218	232.0E6	715.8E6	111.867	100.722
13)	MA Dieldrin	6.378	5.350	247.6E6	759.1E6	119.735	104.194
14)	MA Endrin	6.609	5.626	208.1E6	680.2E6	123.160	105.177
15)	B Endosulfa...	6.829	5.919	215.1E6	641.2E6	119.598	101.048
16)	A 4,4'-DDD	6.742	5.772	179.4E6	589.5E6	122.441	104.574
17)	MA 4,4'-DDT	7.057	6.022	200.5E6	557.1E6	133.109	98.419 #
18)	B Endrin al...	6.959	6.098	164.2E6	488.1E6	123.098	101.899
19)	B Endosulfa...	7.194	6.321	204.8E6	623.0E6	119.700	100.841
20)	A Methoxychlor	7.533	6.597	485.6E6	1303.4E6	561.282	448.466
21)	B Endrin ke...	7.681	6.826	225.9E6	694.5E6	121.175	103.302
22)	Toxaphene-1	5.846f	4.966	182098	360.8E6	30.074	9965.445 #
23)	Toxaphene-2	6.504	5.626f	1830966	680.2E6	106.436	17081.504 #
24)	Toxaphene-3	7.057f	6.597	200.5E6	1303.4E6	4124.293	10196.538 #
25)	Toxaphene-4	7.194	6.767f	204.8E6	58004958	5659.067	324.431 #
26)	Toxaphene-5	7.624	0.000	973571	0	36.743	N.D. #

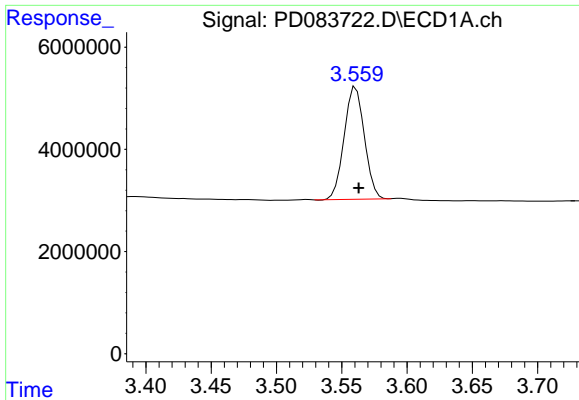
(f)=RT Delta > 1/2 Window (#)=Amounts differ by > 25% (m)=manual int.

Data Path : Z:\pestpcbsrv\HPCHEM1\ECD_D\Data\PD061824\
 Data File : PD083722.D
 Signal(s) : Signal #1: ECD1A.ch Signal #2: ECD2B.ch
 Acq On : 18 Jun 2024 19:20
 Operator : AR\AJ
 Sample : P2898-10
 Misc :
 ALS Vial : 21 Sample Multiplier: 1

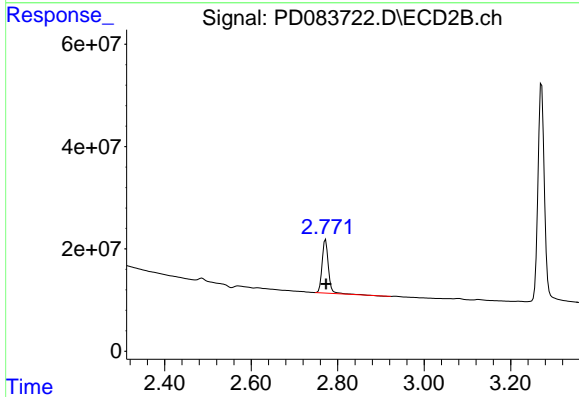
Integration File signal 1: autoint1.e
 Integration File signal 2: autoint2.e
 Quant Time: Jun 18 23:05:08 2024
 Quant Method : Z:\pestpcbsrv\HPCHEM1\ECD_D\Method\PD060724CLP.M
 Quant Title : GC Extractables
 QLast Update : Fri Jun 07 04:03:14 2024
 Response via : Initial Calibration
 Integrator: ChemStation

Volume Inj. : 1 µl
 Signal #1 Phase : ZB-MR1 Signal #2 Phase: ZB-MR2
 Signal #1 Info : 30M x 0.32mm x0.5 Signal #2 Info : 30M x 0.32mm x 0.25µm

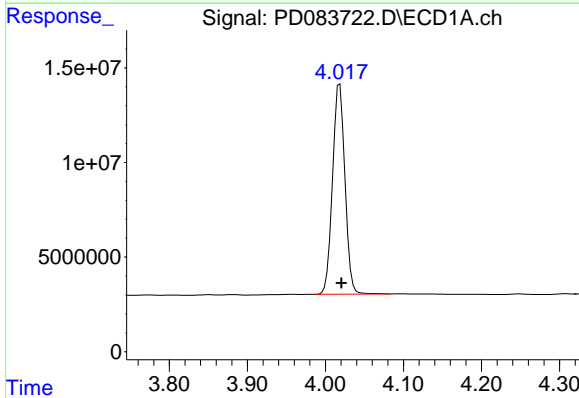




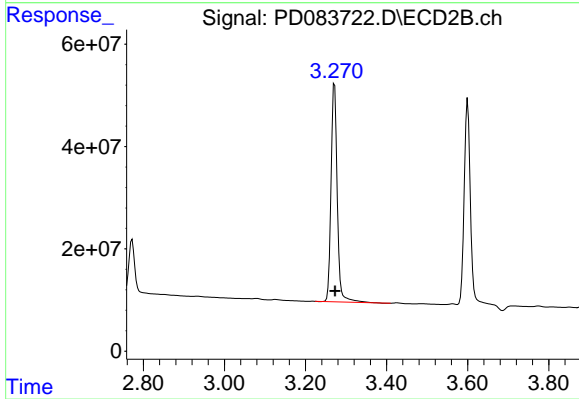
#1 Tetrachloro-m-xylene
 R.T.: 3.561 min
 Delta R.T.: -0.002 min
 Response: 23709492
 Conc: 18.16 ng/ml



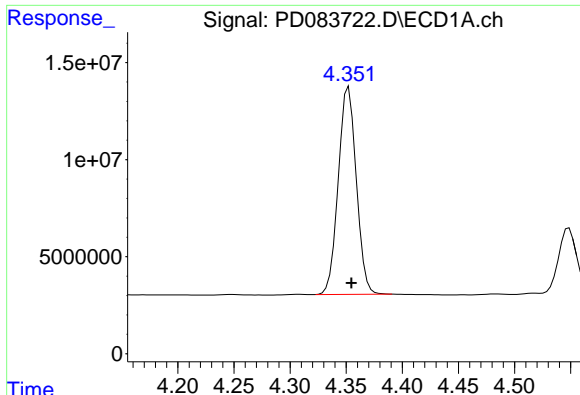
#1 Tetrachloro-m-xylene
 R.T.: 2.772 min
 Delta R.T.: -0.001 min
 Response: 105700676
 Conc: 19.39 ng/ml



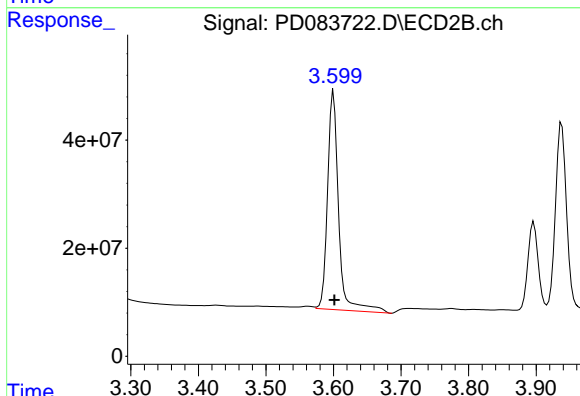
#2 alpha-BHC
 R.T.: 4.018 min
 Delta R.T.: -0.002 min
 Response: 122752240
 Conc: 55.31 ng/ml



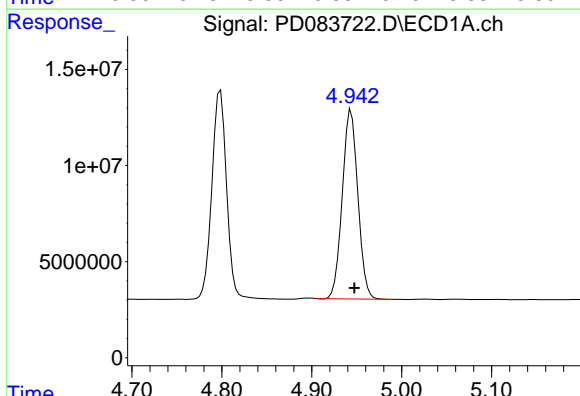
#2 alpha-BHC
 R.T.: 3.271 min
 Delta R.T.: -0.001 min
 Response: 455237314
 Conc: 53.40 ng/ml



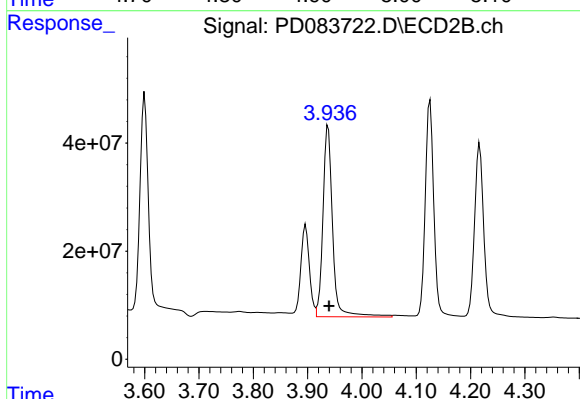
#3 gamma-BHC (Lindane)
 R.T.: 4.352 min
 Delta R.T.: -0.002 min
 Response: 119658299
 Conc: 55.00 ng/ml



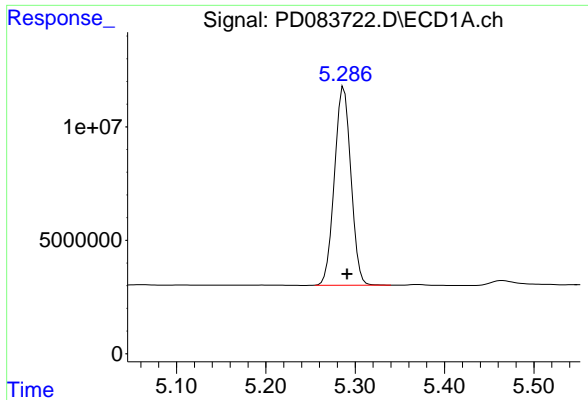
#3 gamma-BHC (Lindane)
 R.T.: 3.600 min
 Delta R.T.: -0.001 min
 Response: 464211990
 Conc: 59.45 ng/ml



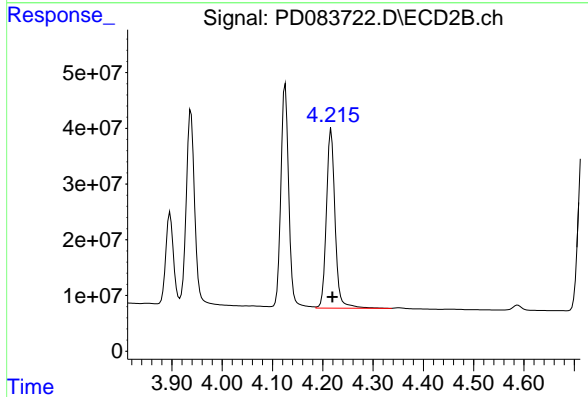
#4 Heptachlor
 R.T.: 4.944 min
 Delta R.T.: -0.004 min
 Response: 118372668
 Conc: 48.73 ng/ml



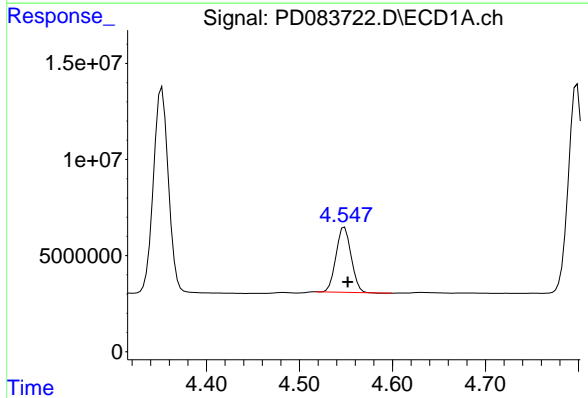
#4 Heptachlor
 R.T.: 3.938 min
 Delta R.T.: -0.002 min
 Response: 439320717
 Conc: 56.11 ng/ml



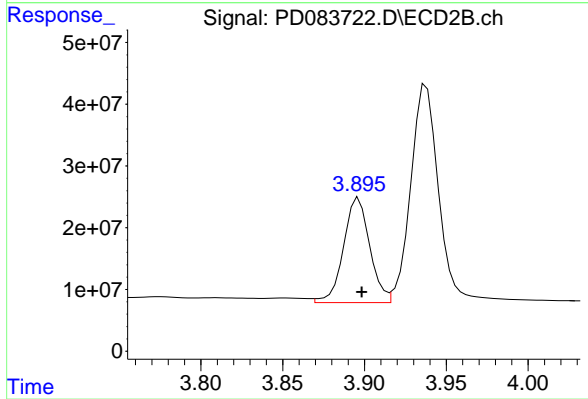
#5 Aldrin
R.T.: 5.287 min
Delta R.T.: -0.004 min
Response: 111751908
Conc: 47.04 ng/ml



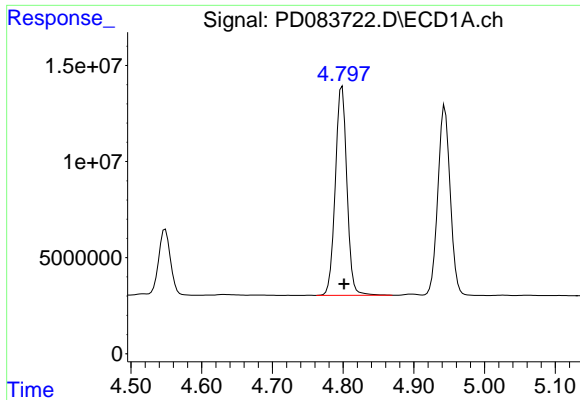
#5 Aldrin
R.T.: 4.217 min
Delta R.T.: -0.003 min
Response: 384459784
Conc: 49.75 ng/ml



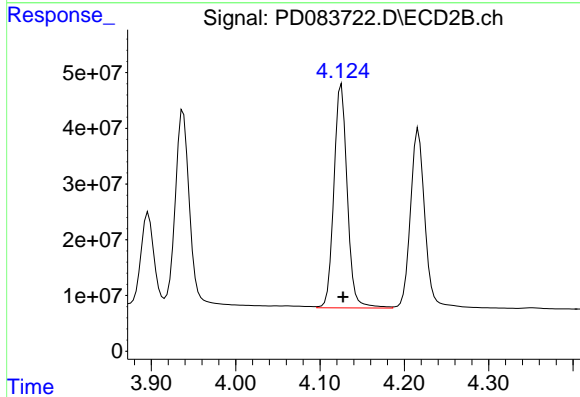
#6 beta-BHC
R.T.: 4.549 min
Delta R.T.: -0.003 min
Response: 38155636
Conc: 37.86 ng/ml



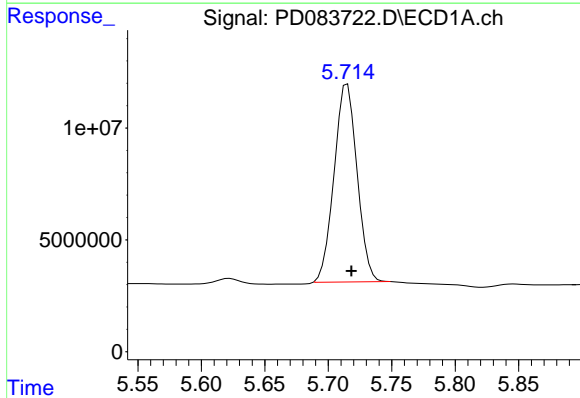
#6 beta-BHC
R.T.: 3.897 min
Delta R.T.: -0.002 min
Response: 188940770
Conc: 52.95 ng/ml



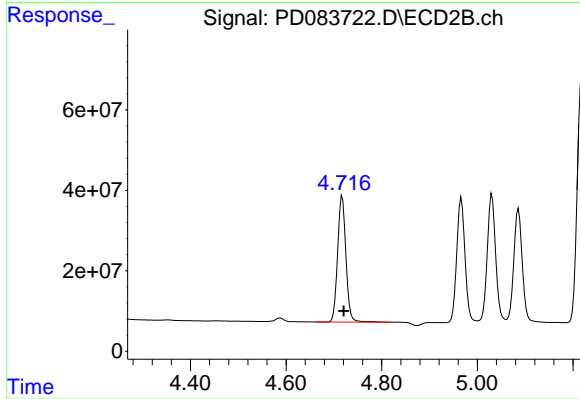
#7 delta-BHC
 R.T.: 4.798 min
 Delta R.T.: -0.003 min
 Response: 123907418
 Conc: 47.17 ng/ml



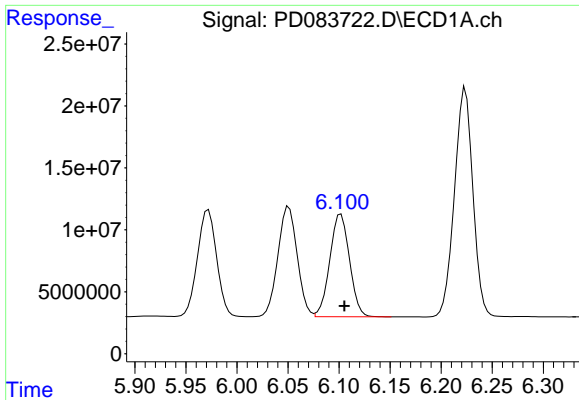
#7 delta-BHC
 R.T.: 4.125 min
 Delta R.T.: -0.002 min
 Response: 441558460
 Conc: 51.78 ng/ml



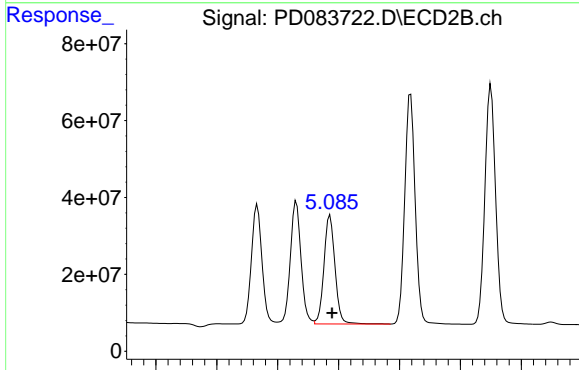
#8 Heptachlor epoxide
 R.T.: 5.715 min
 Delta R.T.: -0.003 min
 Response: 111470024
 Conc: 53.97 ng/ml



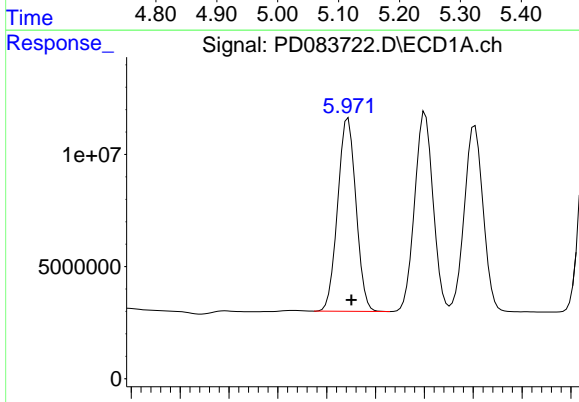
#8 Heptachlor epoxide
 R.T.: 4.718 min
 Delta R.T.: -0.003 min
 Response: 376631118
 Conc: 51.47 ng/ml



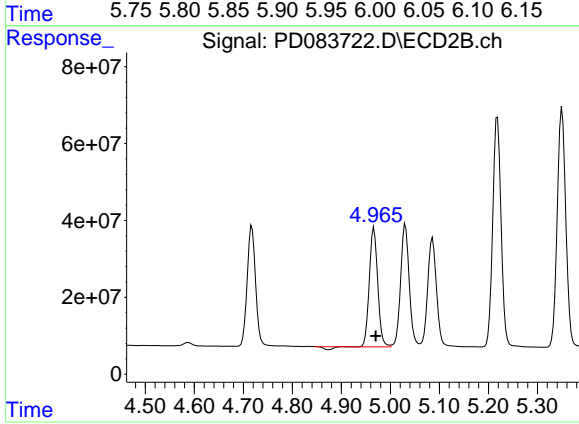
#9 Endosulfan I
R.T.: 6.102 min
Delta R.T.: -0.003 min
Response: 111179784
Conc: 56.85 ng/ml



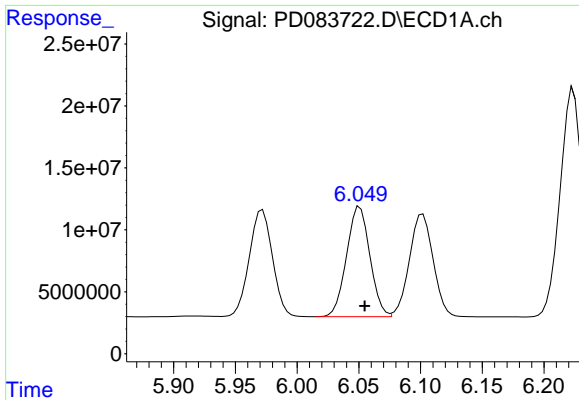
#9 Endosulfan I
R.T.: 5.086 min
Delta R.T.: -0.003 min
Response: 357377522
Conc: 54.06 ng/ml



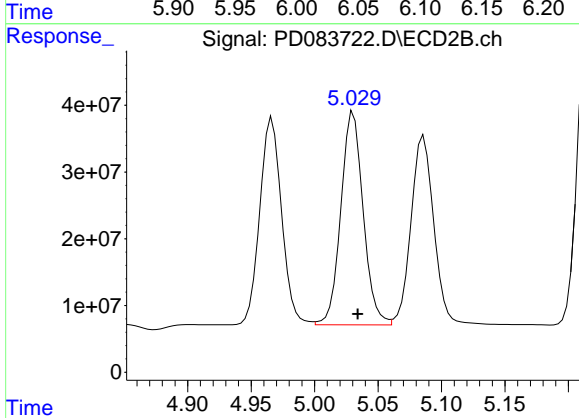
#10 trans-Chlordane
R.T.: 5.972 min
Delta R.T.: -0.003 min
Response: 112477219
Conc: 55.24 ng/ml



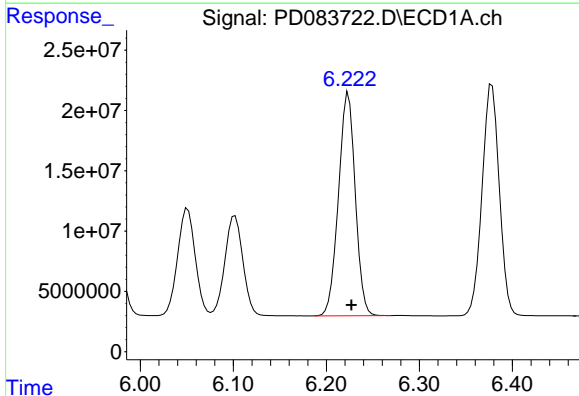
#10 trans-Chlordane
R.T.: 4.966 min
Delta R.T.: -0.004 min
Response: 360839929
Conc: 49.68 ng/ml



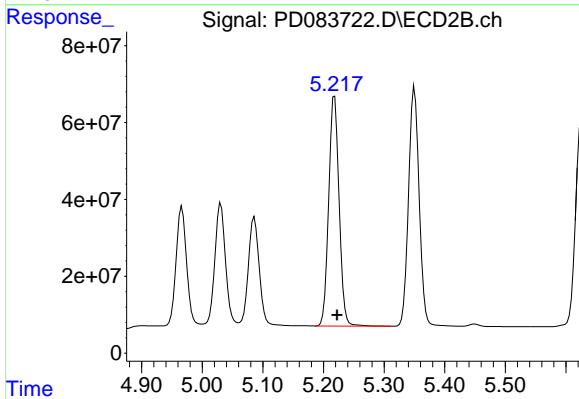
#11 cis-Chlordane
R.T.: 6.051 min
Delta R.T.: -0.004 min
Response: 116959763
Conc: 56.17 ng/ml



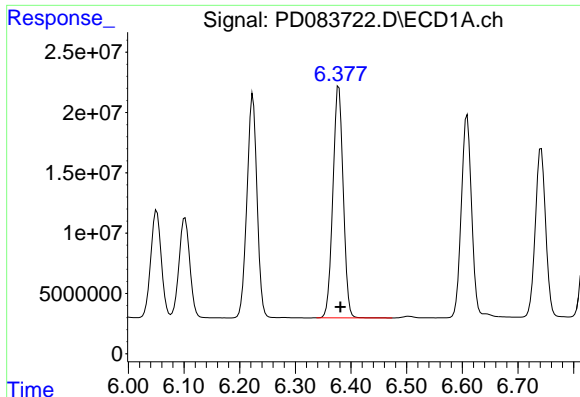
#11 cis-Chlordane
R.T.: 5.031 min
Delta R.T.: -0.003 min
Response: 391220188
Conc: 53.14 ng/ml



#12 4,4'-DDE
R.T.: 6.224 min
Delta R.T.: -0.003 min
Response: 232027986
Conc: 111.87 ng/ml

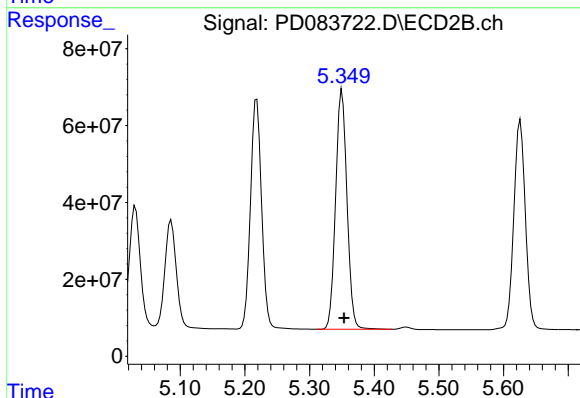


#12 4,4'-DDE
R.T.: 5.218 min
Delta R.T.: -0.004 min
Response: 715792671
Conc: 100.72 ng/ml



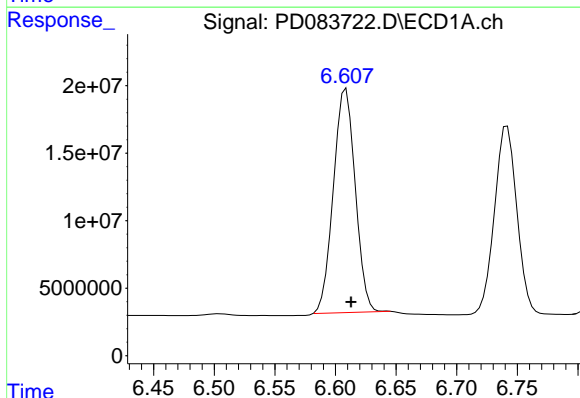
#13 Dieldrin

R.T.: 6.378 min
Delta R.T.: -0.003 min
Response: 247575867
Conc: 119.74 ng/ml



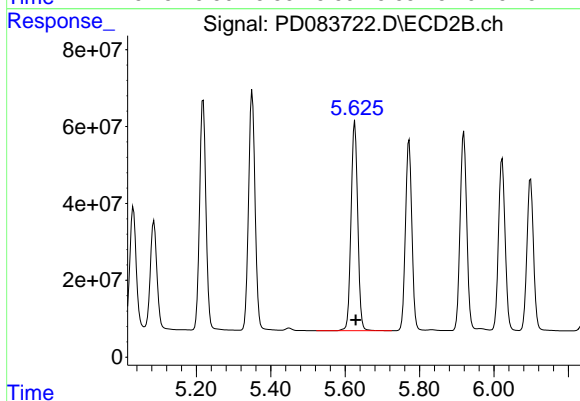
#13 Dieldrin

R.T.: 5.350 min
Delta R.T.: -0.003 min
Response: 759071311
Conc: 104.19 ng/ml



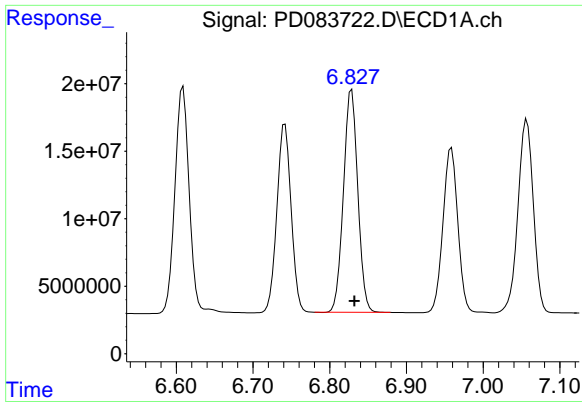
#14 Endrin

R.T.: 6.609 min
Delta R.T.: -0.004 min
Response: 208051935
Conc: 123.16 ng/ml



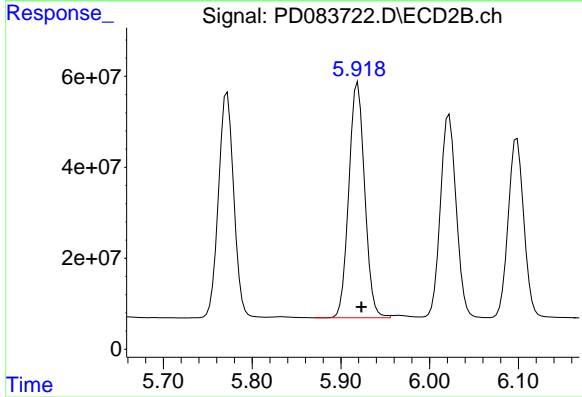
#14 Endrin

R.T.: 5.626 min
Delta R.T.: -0.003 min
Response: 680220790
Conc: 105.18 ng/ml



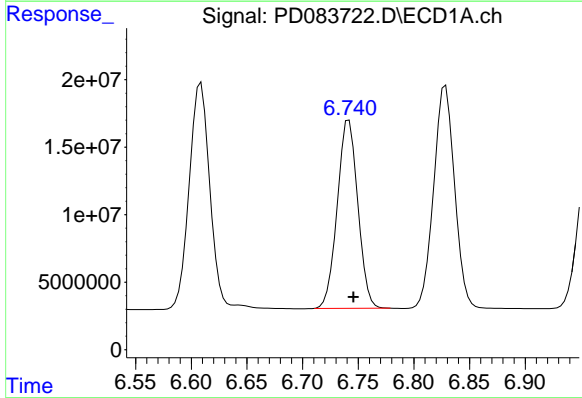
#15 Endosulfan II

R.T.: 6.829 min
Delta R.T.: -0.004 min
Response: 215128890
Conc: 119.60 ng/ml



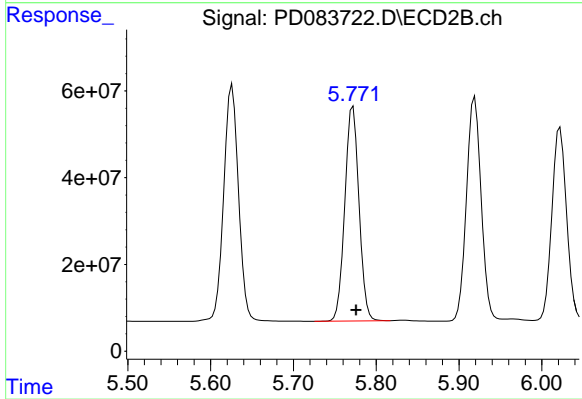
#15 Endosulfan II

R.T.: 5.919 min
Delta R.T.: -0.004 min
Response: 641204332
Conc: 101.05 ng/ml



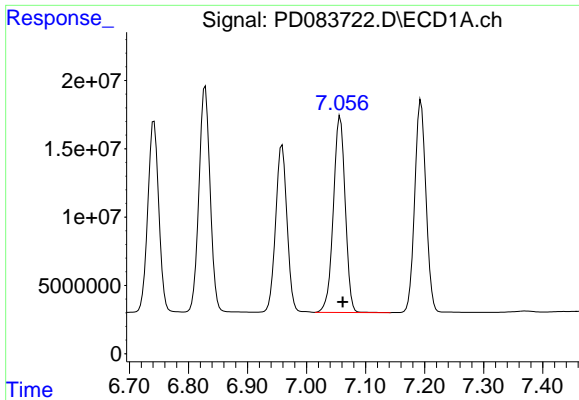
#16 4,4'-DDD

R.T.: 6.742 min
Delta R.T.: -0.004 min
Response: 179416328
Conc: 122.44 ng/ml



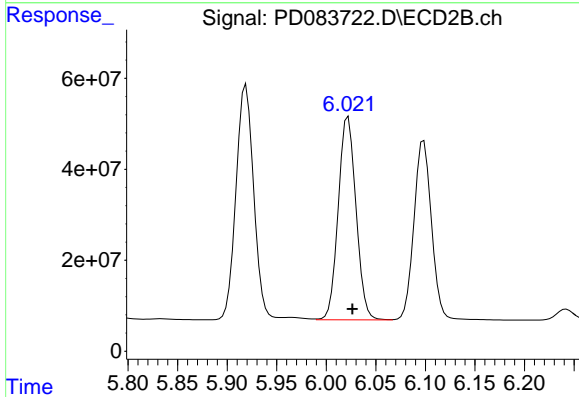
#16 4,4'-DDD

R.T.: 5.772 min
Delta R.T.: -0.004 min
Response: 589530592
Conc: 104.57 ng/ml



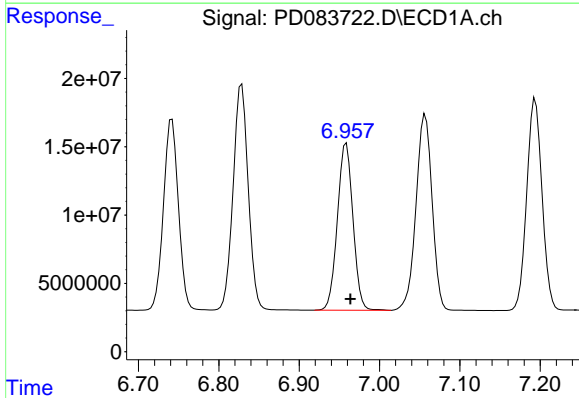
#17 4,4'-DDT

R.T.: 7.057 min
Delta R.T.: -0.004 min
Response: 200521577
Conc: 133.11 ng/ml



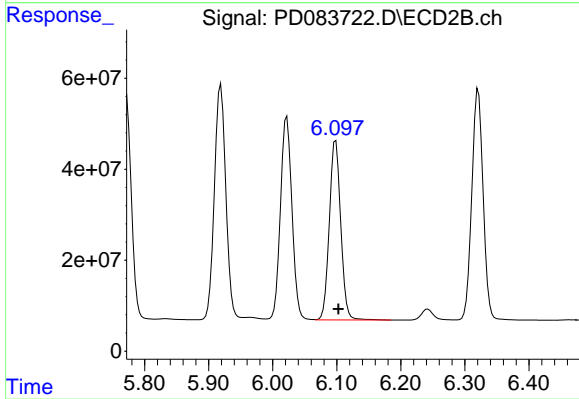
#17 4,4'-DDT

R.T.: 6.022 min
Delta R.T.: -0.004 min
Response: 557104542
Conc: 98.42 ng/ml



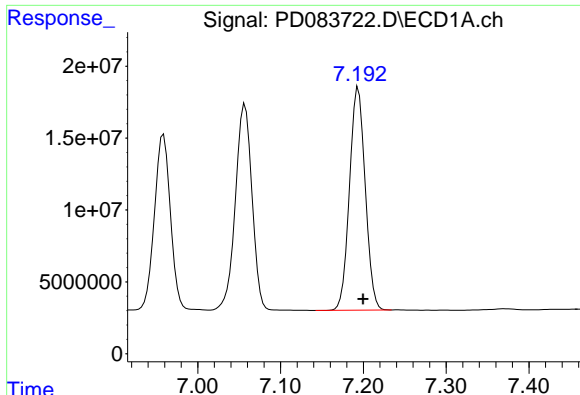
#18 Endrin aldehyde

R.T.: 6.959 min
Delta R.T.: -0.005 min
Response: 164200069
Conc: 123.10 ng/ml



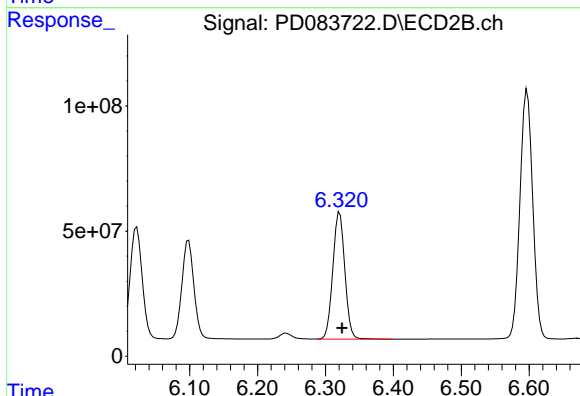
#18 Endrin aldehyde

R.T.: 6.098 min
Delta R.T.: -0.004 min
Response: 488119724
Conc: 101.90 ng/ml



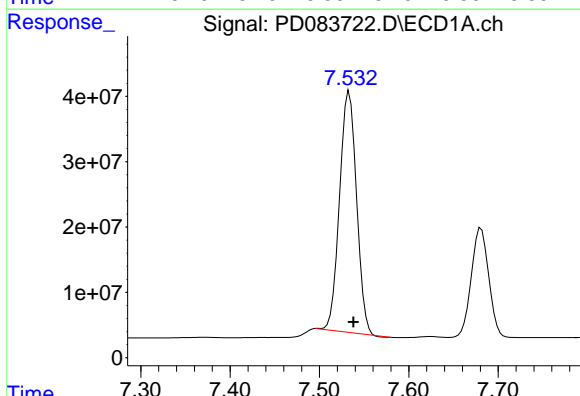
#19 Endosulfan Sulfate

R.T.: 7.194 min
Delta R.T.: -0.006 min
Response: 204782804
Conc: 119.70 ng/ml



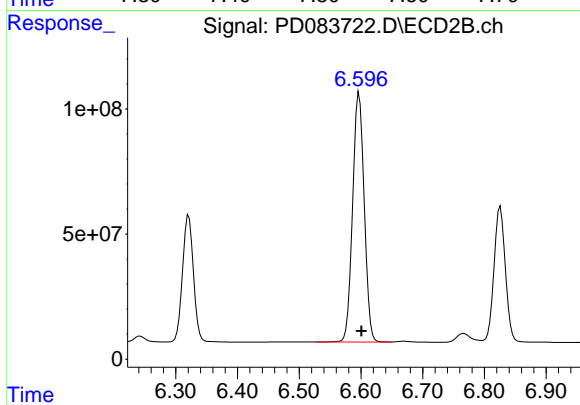
#19 Endosulfan Sulfate

R.T.: 6.321 min
Delta R.T.: -0.004 min
Response: 623031917
Conc: 100.84 ng/ml



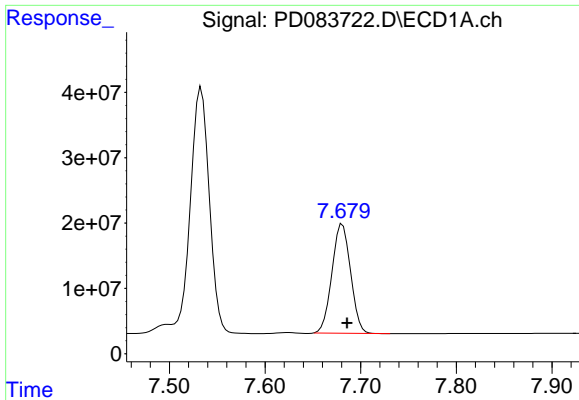
#20 Methoxychlor

R.T.: 7.533 min
Delta R.T.: -0.005 min
Response: 485605162
Conc: 561.28 ng/ml



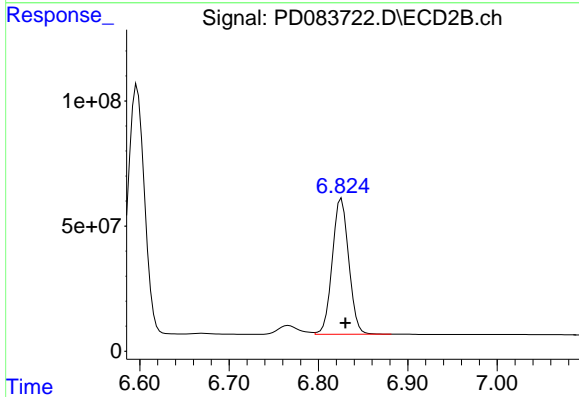
#20 Methoxychlor

R.T.: 6.597 min
Delta R.T.: -0.004 min
Response: 1303425778
Conc: 448.47 ng/ml



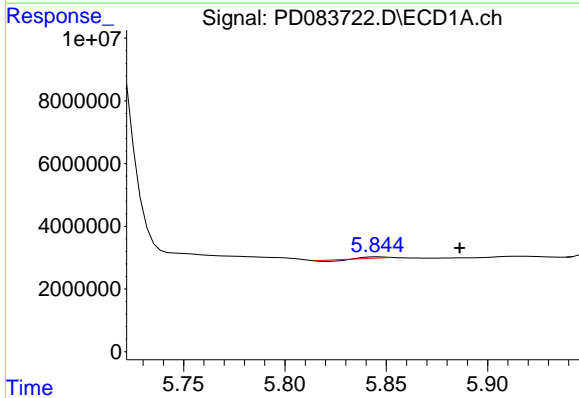
#21 Endrin ketone

R.T.: 7.681 min
 Delta R.T.: -0.005 min
 Response: 225896395
 Conc: 121.17 ng/ml



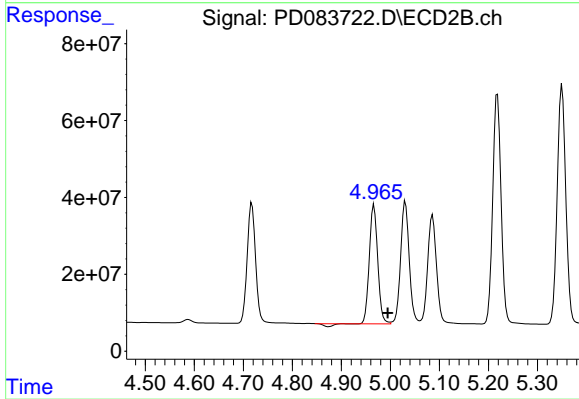
#21 Endrin ketone

R.T.: 6.826 min
 Delta R.T.: -0.004 min
 Response: 694457782
 Conc: 103.30 ng/ml



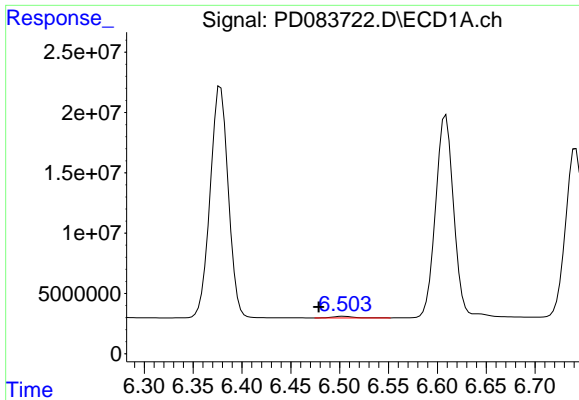
#22 Toxaphene-1

R.T.: 5.846 min
 Delta R.T.: -0.040 min
 Response: 182098
 Conc: 30.07 ng/ml



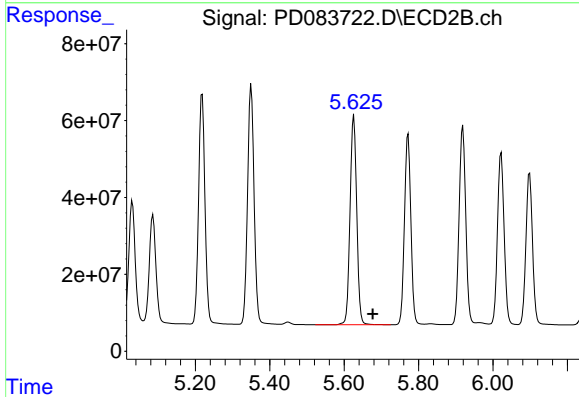
#22 Toxaphene-1

R.T.: 4.966 min
 Delta R.T.: -0.028 min
 Response: 360839929
 Conc: 9965.45 ng/ml



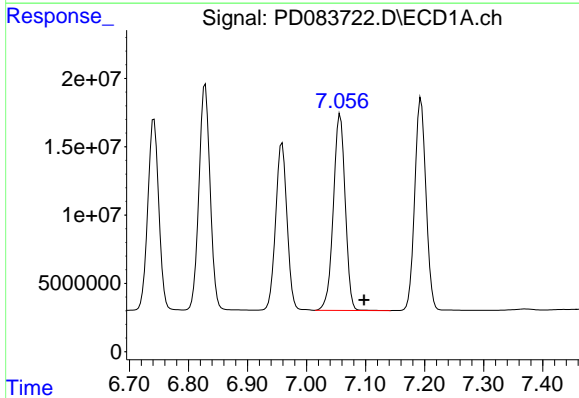
#23 Toxaphene-2

R.T.: 6.504 min
Delta R.T.: 0.026 min
Response: 1830966
Conc: 106.44 ng/ml



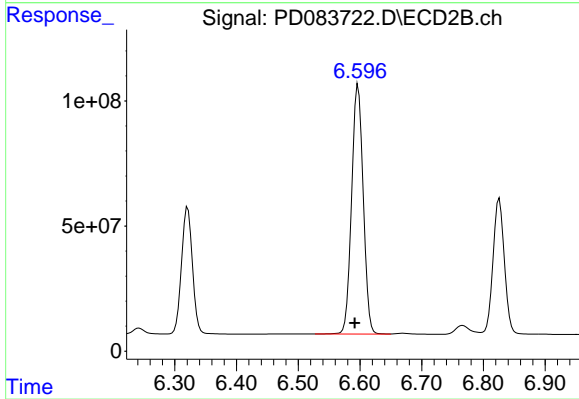
#23 Toxaphene-2

R.T.: 5.626 min
Delta R.T.: -0.051 min
Response: 680220790
Conc: 17081.50 ng/ml



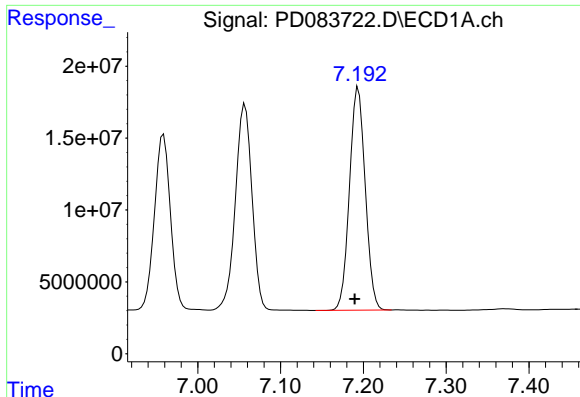
#24 Toxaphene-3

R.T.: 7.057 min
Delta R.T.: -0.040 min
Response: 200521577
Conc: 4124.29 ng/ml



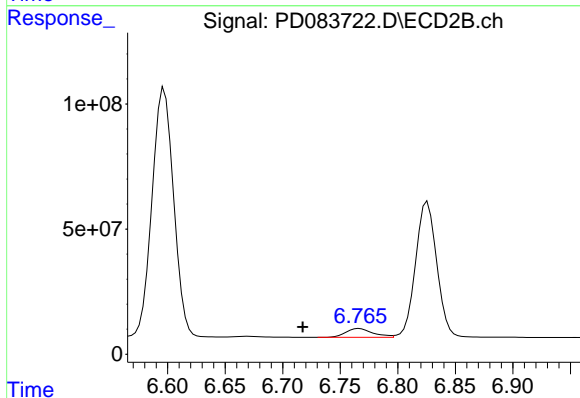
#24 Toxaphene-3

R.T.: 6.597 min
Delta R.T.: 0.006 min
Response: 1303425778
Conc: 10196.54 ng/ml



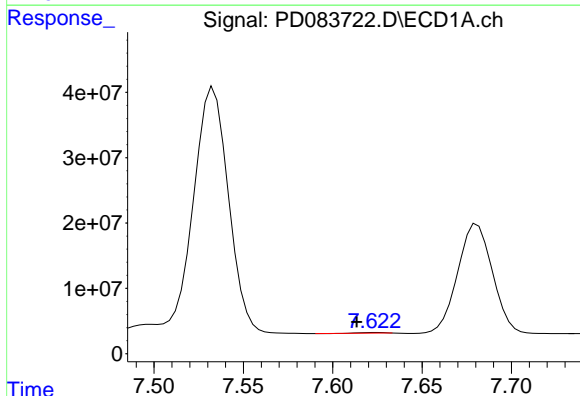
#25 Toxaphene-4

R.T.: 7.194 min
 Delta R.T.: 0.004 min
 Response: 204782804
 Conc: 5659.07 ng/ml



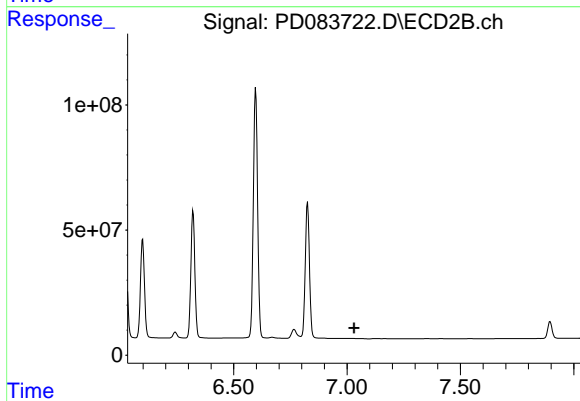
#25 Toxaphene-4

R.T.: 6.767 min
 Delta R.T.: 0.049 min
 Response: 58004958
 Conc: 324.43 ng/ml



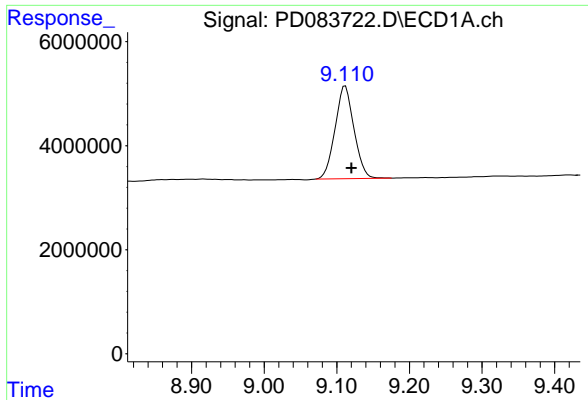
#26 Toxaphene-5

R.T.: 7.624 min
 Delta R.T.: 0.010 min
 Response: 973571
 Conc: 36.74 ng/ml



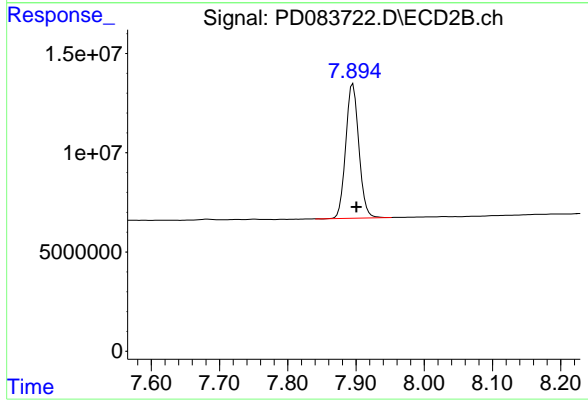
#26 Toxaphene-5

R.T.: 0.000 min
 Exp R.T.: 7.032 min
 Response: 0
 Conc: N.D.



#27 Decachlorobiphenyl

R.T.: 9.112 min
Delta R.T.: -0.008 min
Response: 32242823
Conc: 16.58 ng/ml



#27 Decachlorobiphenyl

R.T.: 7.896 min
Delta R.T.: -0.005 min
Response: 90305773
Conc: 14.87 ng/ml