

Data Path : Z:\pestpcbsrv\HPCHEM1\ECD_D\Data\PD062019\
 Data File : PD053656.D
 Signal(s) : Signal #1: ECD1A.CH Signal #2: ECD2B.CH
 Acq On : 21 Jun 2019 4:19
 Operator : SM\AJ
 Sample : PEM03
 Misc :
 ALS Vial : 3 Sample Multiplier: 1

Instrument :
 ECD_D
 ClientSampleId :
 PEM03

Integration File signal 1: autoint1.e
 Integration File signal 2: autoint2.e
 Quant Time: Jun 21 09:04:32 2019
 Quant Method : Z:\pestpcbsrv\HPCHEM1\ECD_D\Method\PD062019CLP.M
 Quant Title : GC Extractables
 QLast Update : Fri Jun 21 08:58:58 2019
 Response via : Initial Calibration
 Integrator: ChemStation 6890 Scale Mode: Large solvent peaks clipped

Volume Inj. : 1 µl
 Signal #1 Phase : ZB-MR2 Signal #2 Phase: ZB-MR1
 Signal #1 Info : 30M x 0.32mm x0.2 Signal #2 Info : 30M x 0.32mm x 0.50µm

Compound	RT#1	RT#2	Resp#1	Resp#2	ng/ml	ng/ml

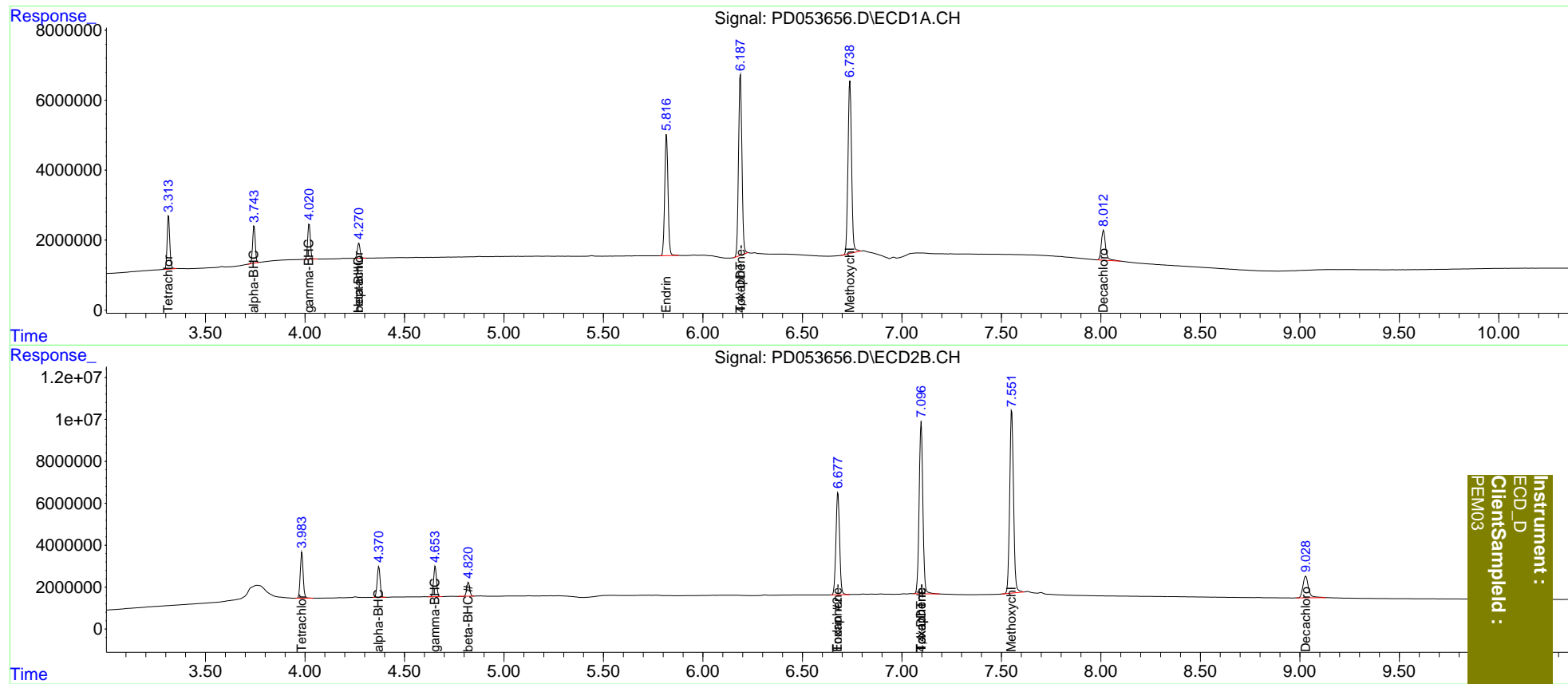
System Monitoring Compounds						
1) SA Tetrachlo...	3.315	3.985	14139655	22253685	19.495	19.733
27) SA Decachlor...	8.013	9.030	12781128	20351154	20.309	20.826
Target Compounds						
2) A alpha-BHC	3.744	4.371	9734469	15011687	9.516	9.457
3) MA gamma-BHC...	4.021	4.655	9534090	15079599	9.864	9.766
4) MA Heptachlor	4.271f	0.000	4275614	0	4.800	N.D. #
6) B beta-BHC	4.271	4.821	4275614	6984845	9.800	9.762
14) MA Endrin	5.817	6.679	40098855	62857716	50.777	51.191
17) MA 4,4'-DDT	6.188	7.097	61056801	107.2E6	97.460	101.386
20) A Methoxychlor	6.739	7.552	61555153	117.7E6	239.013	245.559
23) Toxaphene-2	0.000	6.679	0	62857716	N.D.	7167.010
24) Toxaphene-3	0.000	7.097	0	107.2E6	N.D.	8745.084
25) Toxaphene-4	6.188	7.097	61056801	107.2E6	4494.177	3239.122 #

(f)=RT Delta > 1/2 Window (#)=Amounts differ by > 25% (m)=manual int.

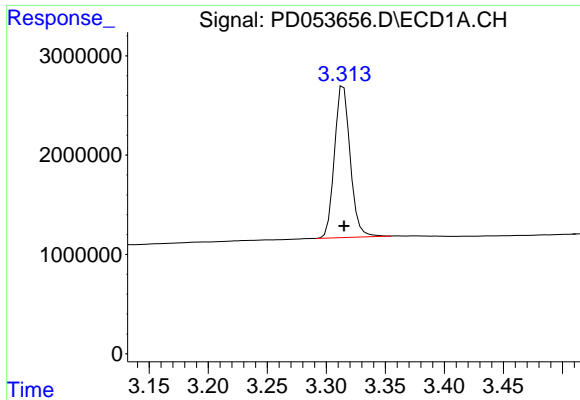
Data Path : Z:\pestpcbsrv\HPCHEM1\ECD_D\Data\PD062019\
 Data File : PD053656.D
 Signal(s) : Signal #1: ECD1A.CH Signal #2: ECD2B.CH
 Acq On : 21 Jun 2019 4:19
 Operator : SM\AJ
 Sample : PEM03
 Misc :
 ALS Vial : 3 Sample Multiplier: 1

Integration File signal 1: autoint1.e
 Integration File signal 2: autoint2.e
 Quant Time: Jun 21 09:04:32 2019
 Quant Method : Z:\pestpcbsrv\HPCHEM1\ECD_D\Method\PD062019CLP.M
 Quant Title : GC Extractables
 QLast Update : Fri Jun 21 08:58:58 2019
 Response via : Initial Calibration
 Integrator: ChemStation 6890 Scale Mode: Large solvent peaks clipped

Volume Inj. : 1 µl
 Signal #1 Phase : ZB-MR2 Signal #2 Phase: ZB-MR1
 Signal #1 Info : 30M x 0.32mm x0.2 Signal #2 Info : 30M x 0.32mm x 0.50µm



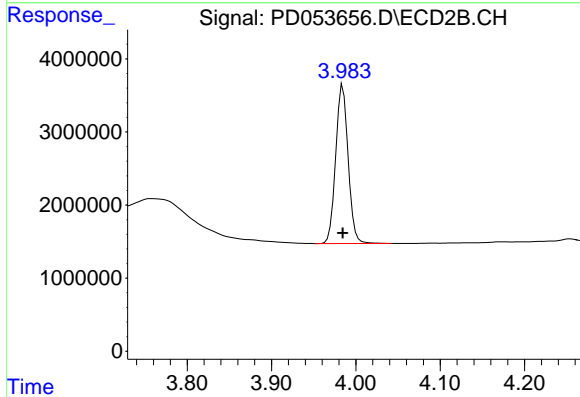
Instrument :
 ECD_D
 ClientSampleId :
 PEM03



#1 Tetrachloro-m-xylene

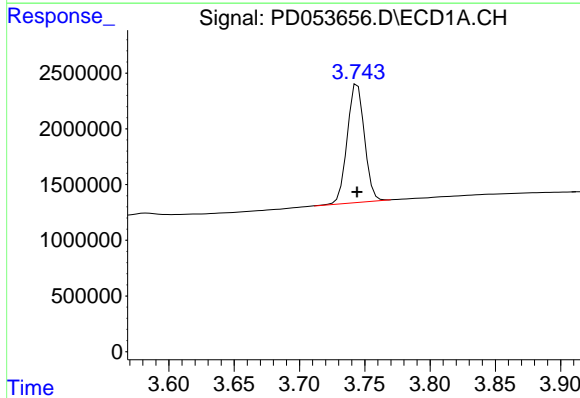
R.T.: 3.315 min
 Delta R.T.: 0.000 min
 Response: 14139655
 Conc: 19.49 ng/ml

Instrument :
 ECD_D
 ClientSampled :
 PEM03



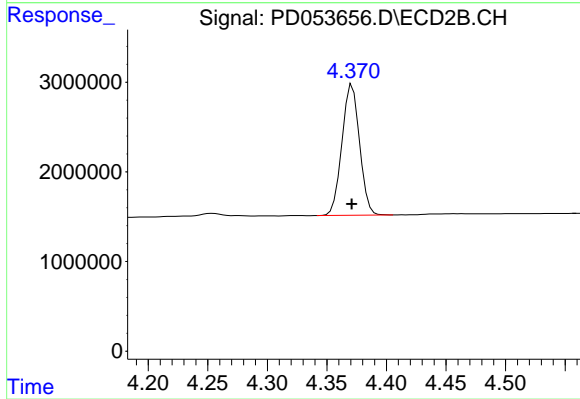
#1 Tetrachloro-m-xylene

R.T.: 3.985 min
 Delta R.T.: 0.000 min
 Response: 22253685
 Conc: 19.73 ng/ml



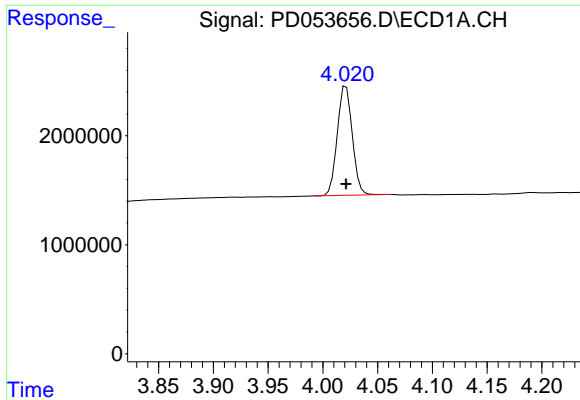
#2 alpha-BHC

R.T.: 3.744 min
 Delta R.T.: 0.000 min
 Response: 9734469
 Conc: 9.52 ng/ml



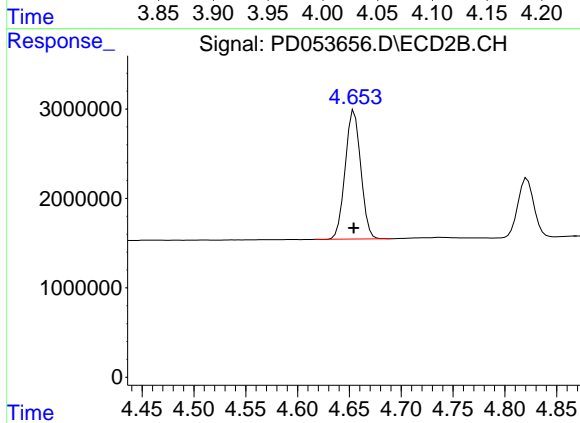
#2 alpha-BHC

R.T.: 4.371 min
 Delta R.T.: 0.000 min
 Response: 15011687
 Conc: 9.46 ng/ml

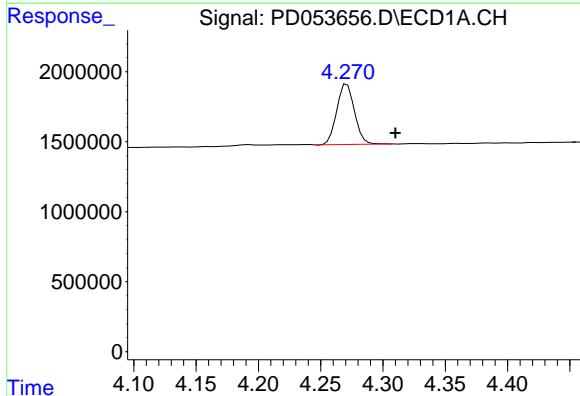


#3 gamma-BHC (Lindane)
 R.T.: 4.021 min
 Delta R.T.: 0.000 min
 Response: 9534090
 Conc: 9.86 ng/ml

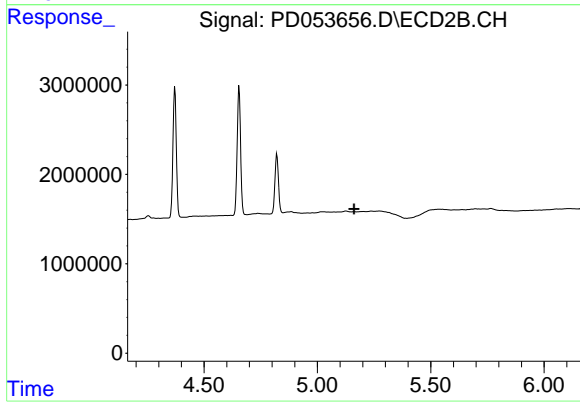
Instrument :
 ECD_D
 ClientSampled :
 PEM03



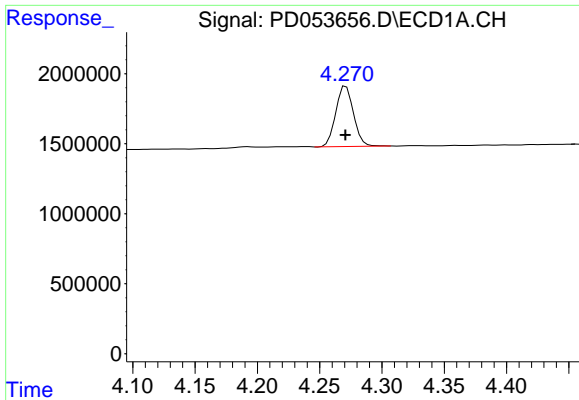
#3 gamma-BHC (Lindane)
 R.T.: 4.655 min
 Delta R.T.: 0.000 min
 Response: 15079599
 Conc: 9.77 ng/ml



#4 Heptachlor
 R.T.: 4.271 min
 Delta R.T.: -0.039 min
 Response: 4275614
 Conc: 4.80 ng/ml

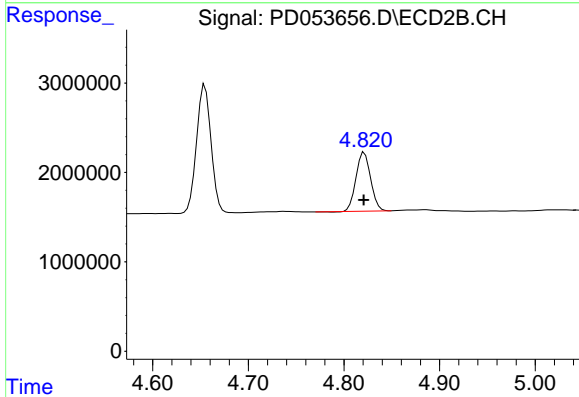


#4 Heptachlor
 R.T.: 0.000 min
 Exp R.T.: 5.162 min
 Response: 0
 Conc: N.D.

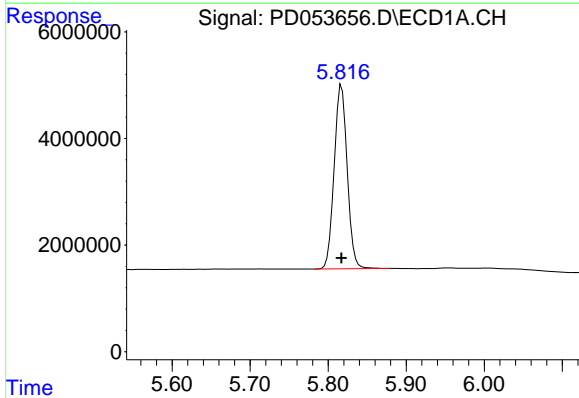


#6 beta-BHC
 R.T.: 4.271 min
 Delta R.T.: 0.000 min
 Response: 4275614
 Conc: 9.80 ng/ml

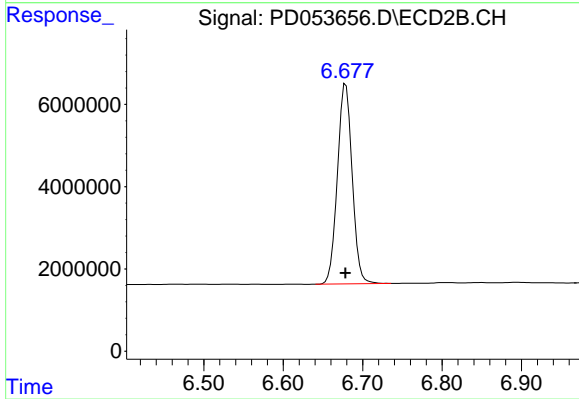
Instrument :
 ECD_D
 ClientSampleId :
 PEM03



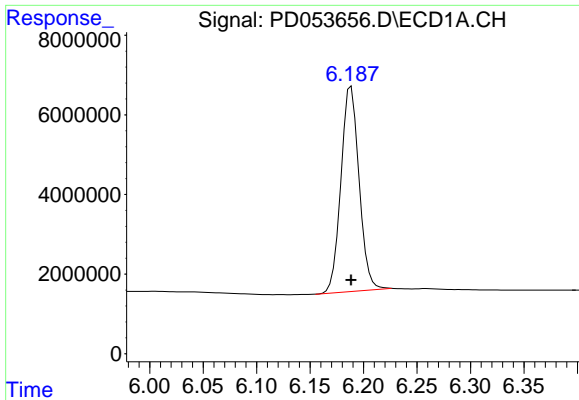
#6 beta-BHC
 R.T.: 4.821 min
 Delta R.T.: 0.000 min
 Response: 6984845
 Conc: 9.76 ng/ml



#14 Endrin
 R.T.: 5.817 min
 Delta R.T.: 0.000 min
 Response: 40098855
 Conc: 50.78 ng/ml



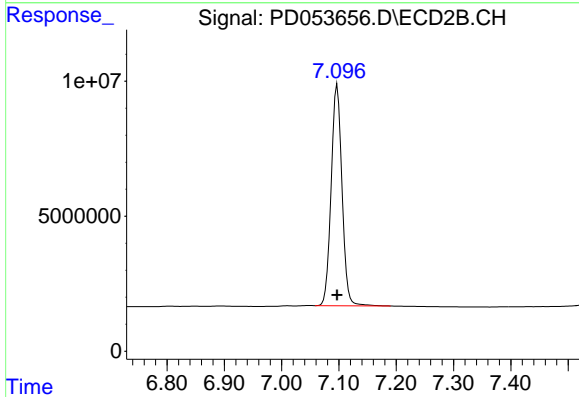
#14 Endrin
 R.T.: 6.679 min
 Delta R.T.: 0.000 min
 Response: 62857716
 Conc: 51.19 ng/ml



#17 4,4'-DDT

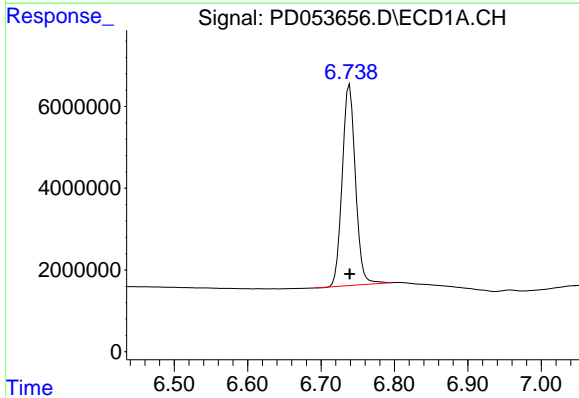
R.T.: 6.188 min
 Delta R.T.: 0.000 min
 Response: 61056801
 Conc: 97.46 ng/ml

Instrument :
 ECD_D
 ClientSampled :
 PEM03



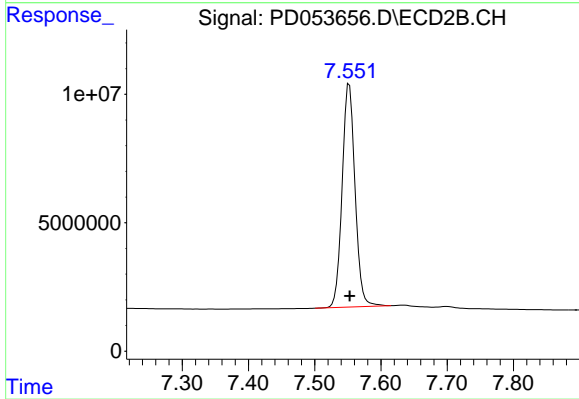
#17 4,4'-DDT

R.T.: 7.097 min
 Delta R.T.: 0.000 min
 Response: 107177957
 Conc: 101.39 ng/ml



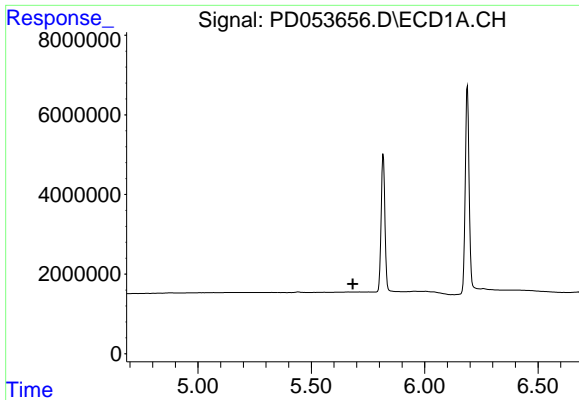
#20 Methoxychlor

R.T.: 6.739 min
 Delta R.T.: 0.000 min
 Response: 61555153
 Conc: 239.01 ng/ml



#20 Methoxychlor

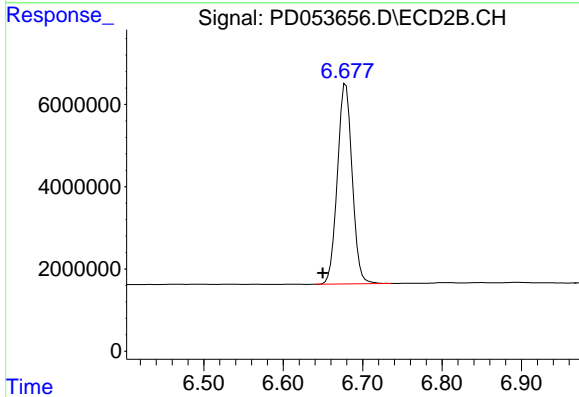
R.T.: 7.552 min
 Delta R.T.: 0.000 min
 Response: 117717119
 Conc: 245.56 ng/ml



#23 Toxaphene-2

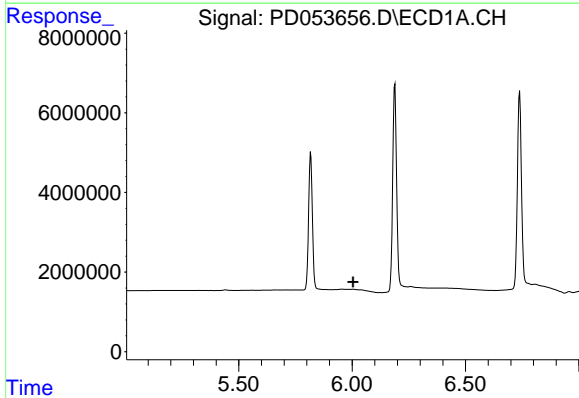
R.T.: 0.000 min
 Exp R.T. : 5.683 min
 Response: 0
 Conc: N.D.

Instrument :
 ECD_D
ClientSampled :
 PEM03



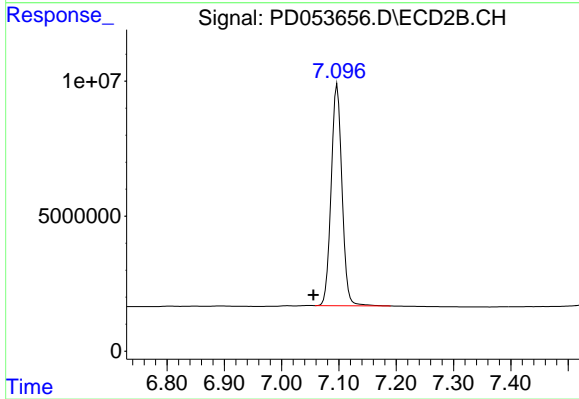
#23 Toxaphene-2

R.T.: 6.679 min
 Delta R.T.: 0.029 min
 Response: 62857716
 Conc: 7167.01 ng/ml



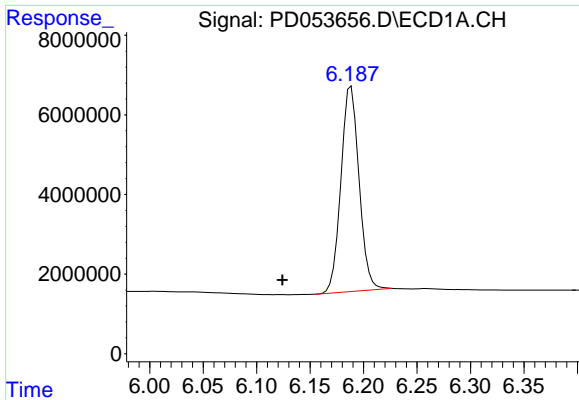
#24 Toxaphene-3

R.T.: 0.000 min
 Exp R.T. : 6.004 min
 Response: 0
 Conc: N.D.



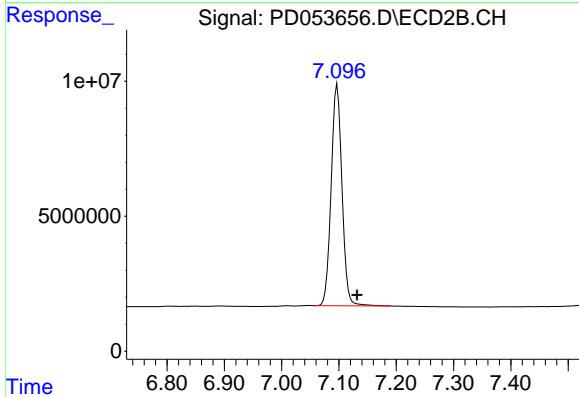
#24 Toxaphene-3

R.T.: 7.097 min
 Delta R.T.: 0.042 min
 Response: 107177957
 Conc: 8745.08 ng/ml

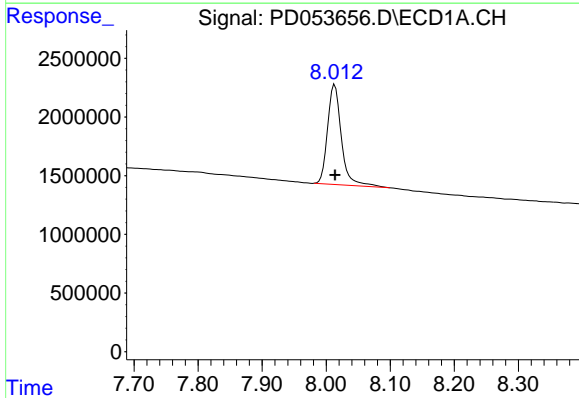


#25 Toxaphene-4
 R.T.: 6.188 min
 Delta R.T.: 0.064 min
 Response: 61056801
 Conc: 4494.18 ng/ml

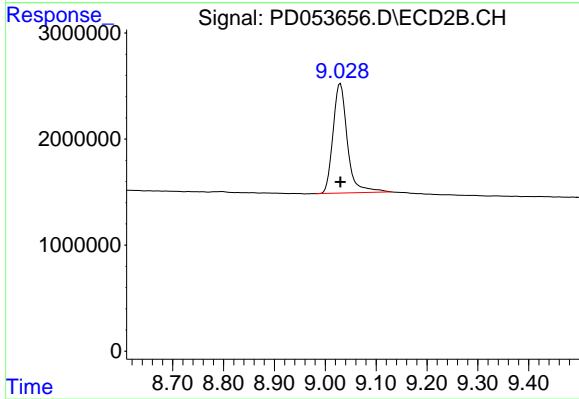
Instrument :
 ECD_D
 ClientSampled :
 PEM03



#25 Toxaphene-4
 R.T.: 7.097 min
 Delta R.T.: -0.035 min
 Response: 107177957
 Conc: 3239.12 ng/ml



#27 Decachlorobiphenyl
 R.T.: 8.013 min
 Delta R.T.: 0.000 min
 Response: 12781128
 Conc: 20.31 ng/ml



#27 Decachlorobiphenyl
 R.T.: 9.030 min
 Delta R.T.: 0.000 min
 Response: 20351154
 Conc: 20.83 ng/ml