

Data Path : Z:\pestpcbsrv\HPCHEM1\ECD_D\Data\PD062019\
 Data File : PD053666.D
 Signal(s) : Signal #1: ECD1A.CH Signal #2: ECD2B.CH
 Acq On : 21 Jun 2019 6:38
 Operator : SM\AJ
 Sample : INDA301
 Misc :
 ALS Vial : 13 Sample Multiplier: 1

Instrument :
 ECD_D
 ClientSampleId :
 INDA301

Integration File signal 1: autoint1.e
 Integration File signal 2: autoint2.e
 Quant Time: Jun 21 08:47:02 2019
 Quant Method : Z:\pestpcbsrv\HPCHEM1\ECD_D\Method\PD062019CLP.M
 Quant Title : GC Extractables
 QLast Update : Fri Jun 21 08:46:10 2019
 Response via : Initial Calibration
 Integrator: ChemStation 6890 Scale Mode: Large solvent peaks clipped

Volume Inj. : 1 µl
 Signal #1 Phase : ZB-MR2 Signal #2 Phase: ZB-MR1
 Signal #1 Info : 30M x 0.32mm x0.2 Signal #2 Info : 30M x 0.32mm x 0.50µm

Compound	RT#1	RT#2	Resp#1	Resp#2	ng/ml	ng/ml

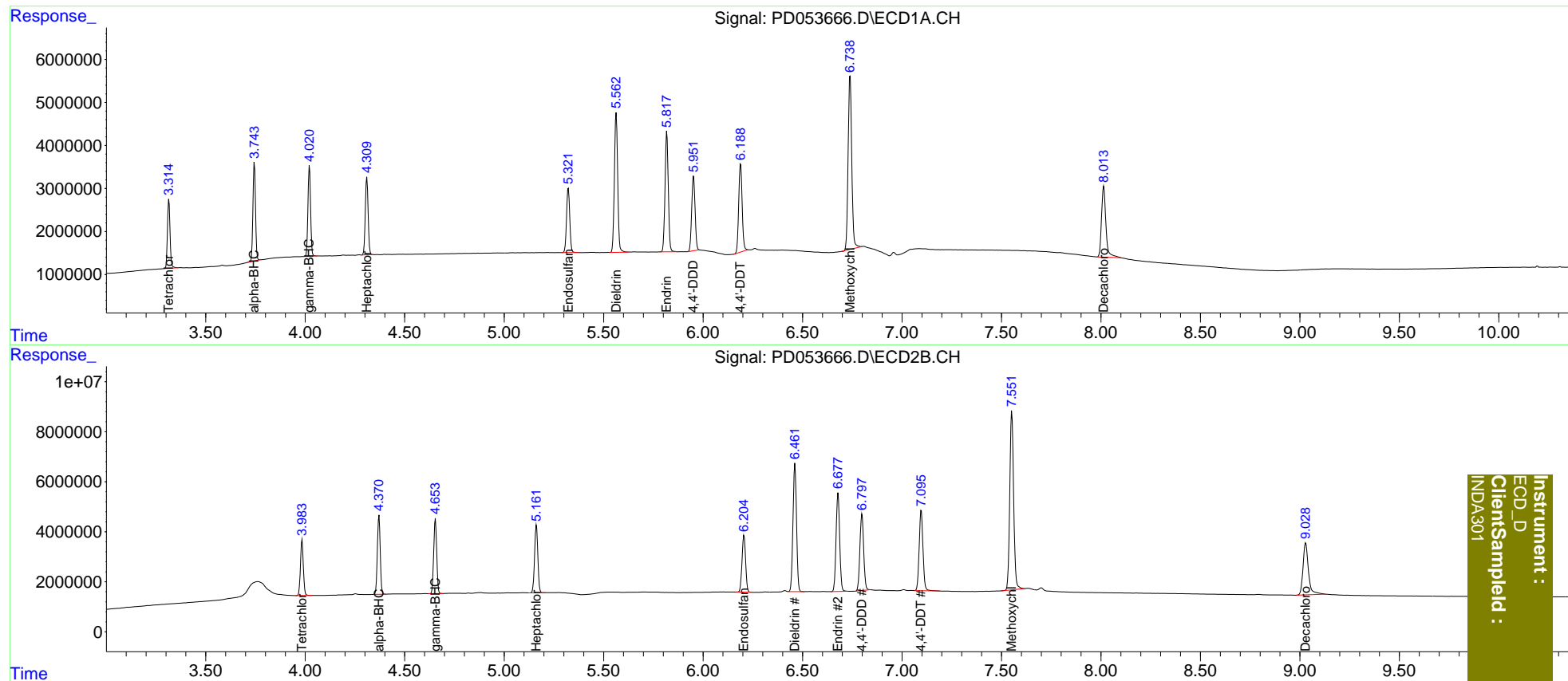
System Monitoring Compounds						
1) SA Tetrachlo...	3.315	3.984	14572616	22762774	20.000	20.000
27) SA Decachlor...	8.014	9.029	25272106	39347632	40.000	40.000
Target Compounds						
2) A alpha-BHC	3.745	4.371	20464804	31881505	20.000	20.000
3) MA gamma-BHC...	4.022	4.654	19353359	31039221	20.000	20.000
4) MA Heptachlor	4.310	5.162	17847763	30715736	20.000	20.000
9) A Endosulfan I	5.323	6.206	16881767	28329959	20.000	20.000
13) MA Dieldrin	5.563	6.462	37215318	62851660	40.000	40.000
14) MA Endrin	5.818	6.679	31974312	49800640	40.000	40.000
16) A 4,4'-DDD	5.952	6.799	20381572	40362641	40.000	40.000
17) MA 4,4'-DDT	6.189	7.097	25077677	42829305	40.000	40.000
20) A Methoxychlor	6.739	7.552	51312339	96443130	200.000	200.000

(f)=RT Delta > 1/2 Window (#)=Amounts differ by > 25% (m)=manual int.

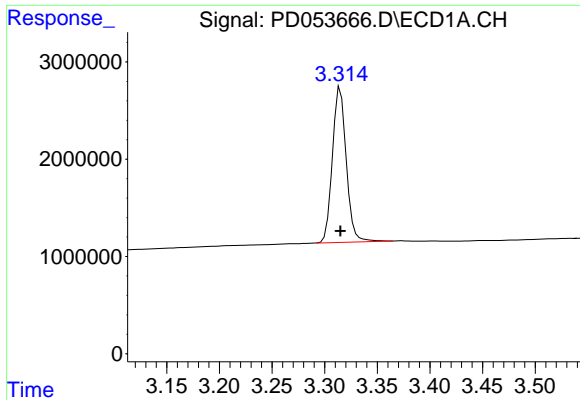
Data Path : Z:\pestpcbsrv\HPCHEM1\ECD_D\Data\PD062019\
 Data File : PD053666.D
 Signal(s) : Signal #1: ECD1A.CH Signal #2: ECD2B.CH
 Acq On : 21 Jun 2019 6:38
 Operator : SM\AJ
 Sample : INDA301
 Misc :
 ALS Vial : 13 Sample Multiplier: 1

Integration File signal 1: autoint1.e
 Integration File signal 2: autoint2.e
 Quant Time: Jun 21 08:47:02 2019
 Quant Method : Z:\pestpcbsrv\HPCHEM1\ECD_D\Method\PD062019CLP.M
 Quant Title : GC Extractables
 QLast Update : Fri Jun 21 08:46:10 2019
 Response via : Initial Calibration
 Integrator: ChemStation 6890 Scale Mode: Large solvent peaks clipped

Volume Inj. : 1 µl
 Signal #1 Phase : ZB-MR2 Signal #2 Phase: ZB-MR1
 Signal #1 Info : 30M x 0.32mm x0.2 Signal #2 Info : 30M x 0.32mm x 0.50µm



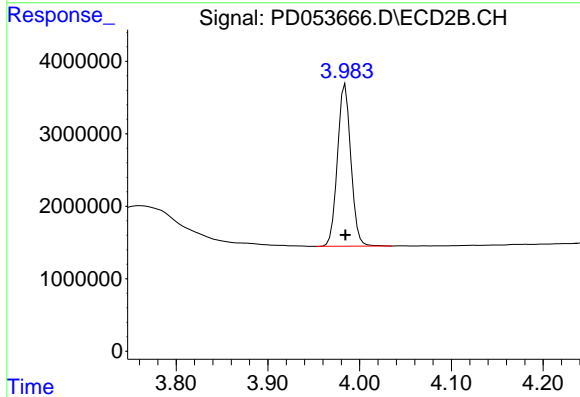
Instrument :
 ECD_D
 ClientSampleId :
 INDA301



#1 Tetrachloro-m-xylene

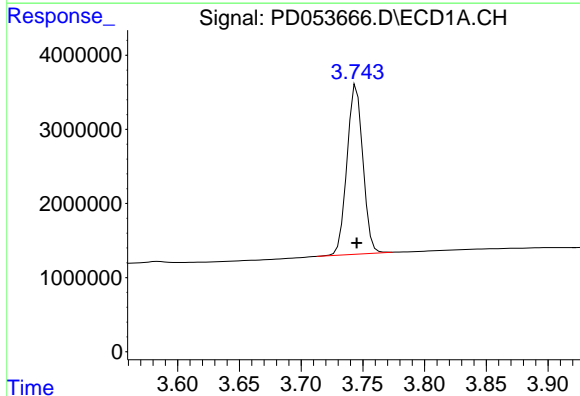
R.T.: 3.315 min
 Delta R.T.: 0.000 min
 Response: 14572616
 Conc: 20.00 ng/ml

Instrument :
 ECD_D
 ClientSampleId :
 INDA301



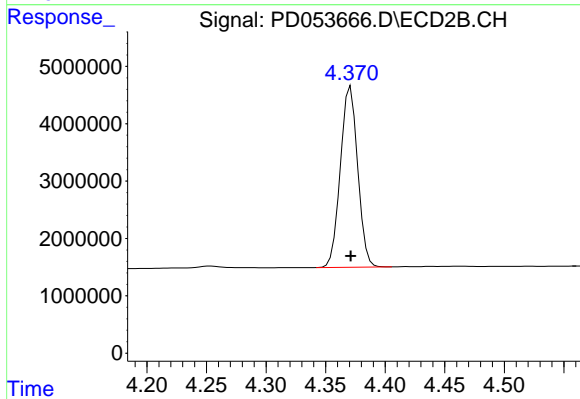
#1 Tetrachloro-m-xylene

R.T.: 3.984 min
 Delta R.T.: 0.000 min
 Response: 22762774
 Conc: 20.00 ng/ml



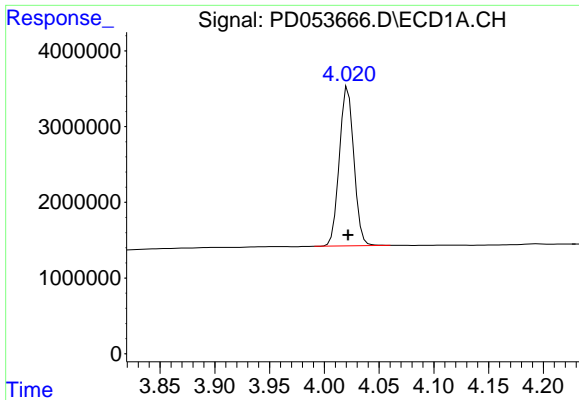
#2 alpha-BHC

R.T.: 3.745 min
 Delta R.T.: 0.000 min
 Response: 20464804
 Conc: 20.00 ng/ml



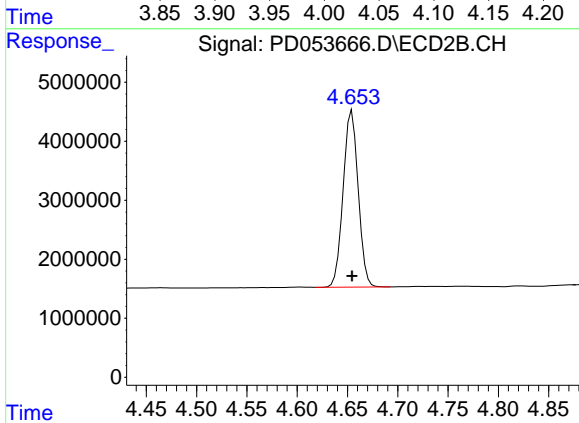
#2 alpha-BHC

R.T.: 4.371 min
 Delta R.T.: 0.000 min
 Response: 31881505
 Conc: 20.00 ng/ml

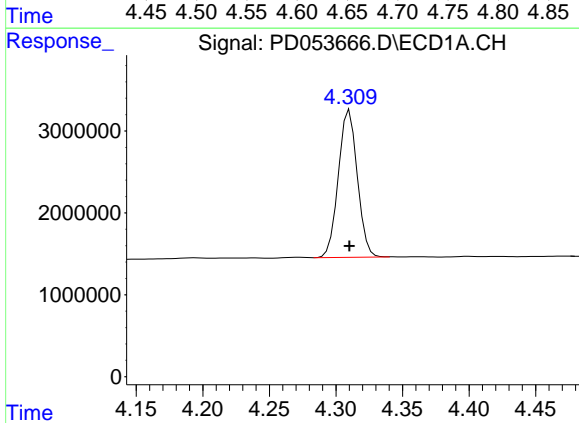


#3 gamma-BHC (Lindane)
 R.T.: 4.022 min
 Delta R.T.: 0.000 min
 Response: 19353359
 Conc: 20.00 ng/ml

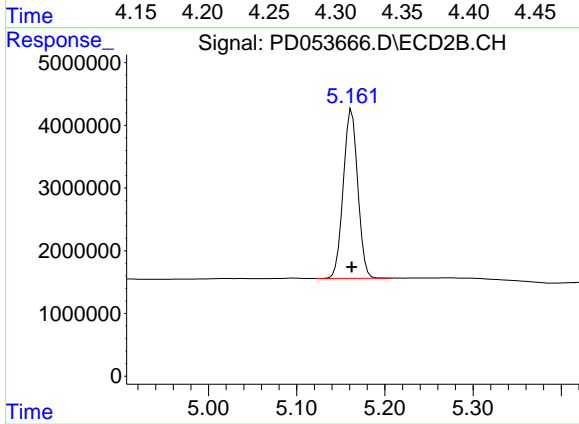
Instrument :
 ECD_D
 ClientSampled :
 INDA301



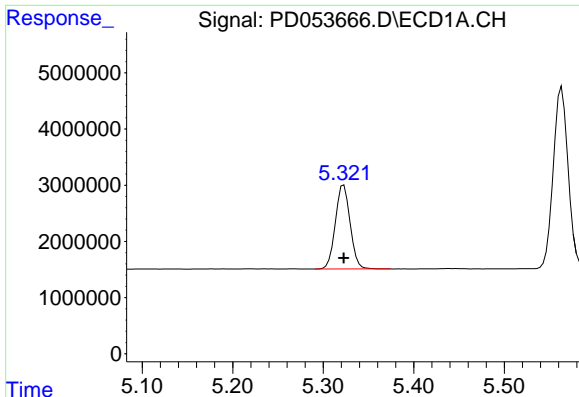
#3 gamma-BHC (Lindane)
 R.T.: 4.654 min
 Delta R.T.: 0.000 min
 Response: 31039221
 Conc: 20.00 ng/ml



#4 Heptachlor
 R.T.: 4.310 min
 Delta R.T.: 0.000 min
 Response: 17847763
 Conc: 20.00 ng/ml



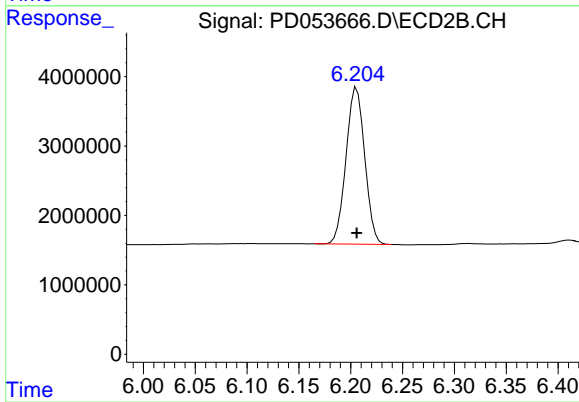
#4 Heptachlor
 R.T.: 5.162 min
 Delta R.T.: 0.000 min
 Response: 30715736
 Conc: 20.00 ng/ml



#9 Endosulfan I

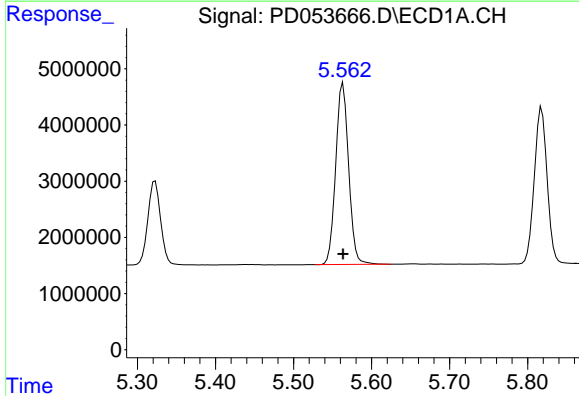
R.T.: 5.323 min
 Delta R.T.: 0.000 min
 Response: 16881767
 Conc: 20.00 ng/ml

Instrument :
 ECD_D
 ClientSampled :
 INDA301



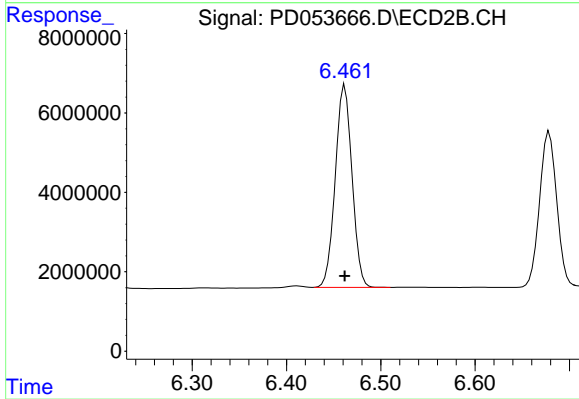
#9 Endosulfan I

R.T.: 6.206 min
 Delta R.T.: 0.000 min
 Response: 28329959
 Conc: 20.00 ng/ml



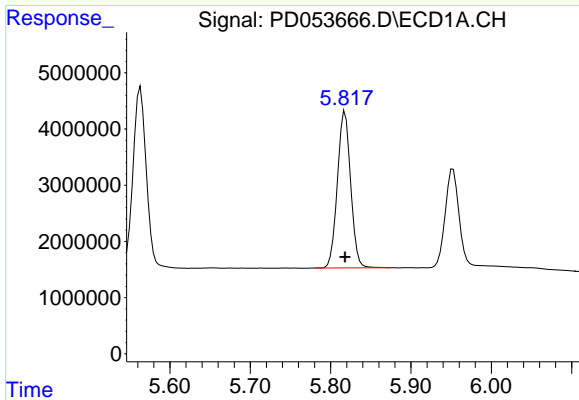
#13 Dieldrin

R.T.: 5.563 min
 Delta R.T.: 0.000 min
 Response: 37215318
 Conc: 40.00 ng/ml



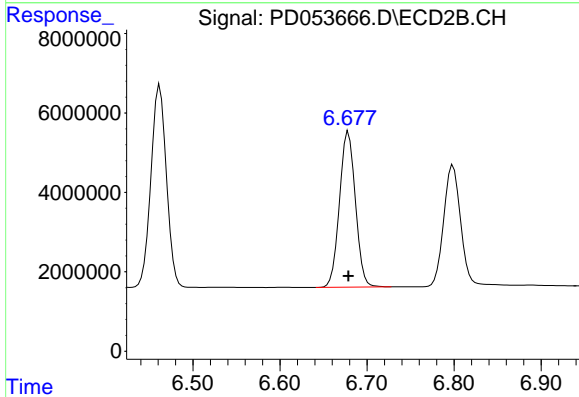
#13 Dieldrin

R.T.: 6.462 min
 Delta R.T.: 0.000 min
 Response: 62851660
 Conc: 40.00 ng/ml

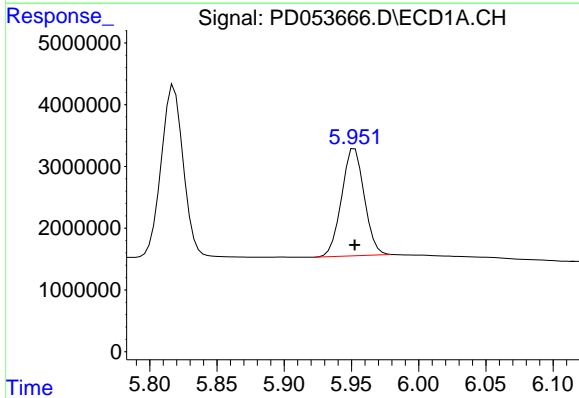


#14 Endrin
 R.T.: 5.818 min
 Delta R.T.: 0.000 min
 Response: 31974312
 Conc: 40.00 ng/ml

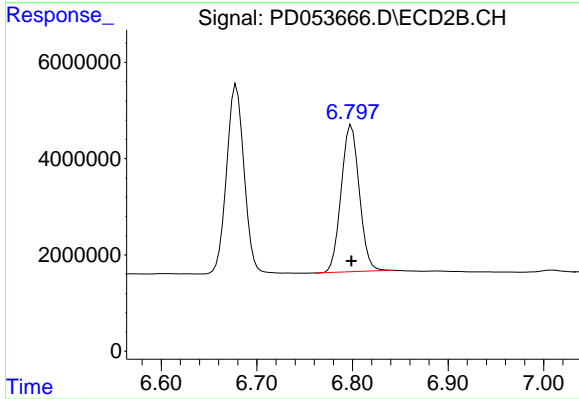
Instrument :
 ECD_D
 ClientSampleId :
 INDA301



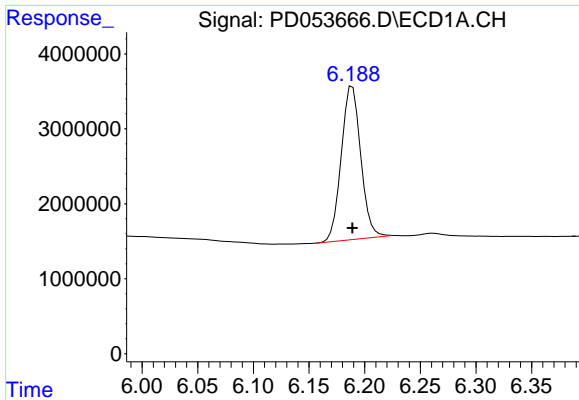
#14 Endrin
 R.T.: 6.679 min
 Delta R.T.: 0.000 min
 Response: 49800640
 Conc: 40.00 ng/ml



#16 4,4'-DDD
 R.T.: 5.952 min
 Delta R.T.: 0.000 min
 Response: 20381572
 Conc: 40.00 ng/ml

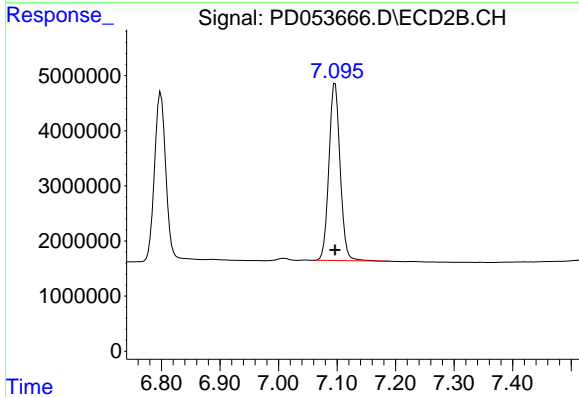


#16 4,4'-DDD
 R.T.: 6.799 min
 Delta R.T.: 0.000 min
 Response: 40362641
 Conc: 40.00 ng/ml

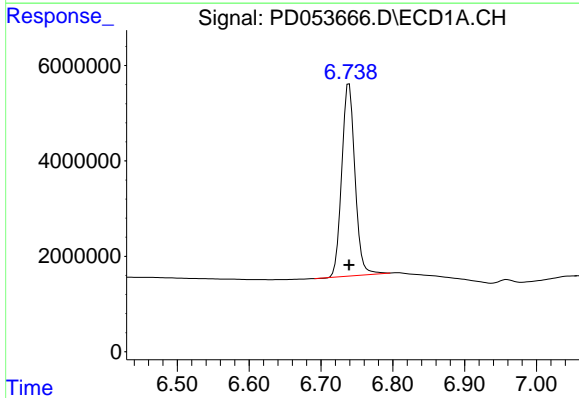


#17 4,4'-DDT
 R.T.: 6.189 min
 Delta R.T.: 0.000 min
 Response: 25077677
 Conc: 40.00 ng/ml

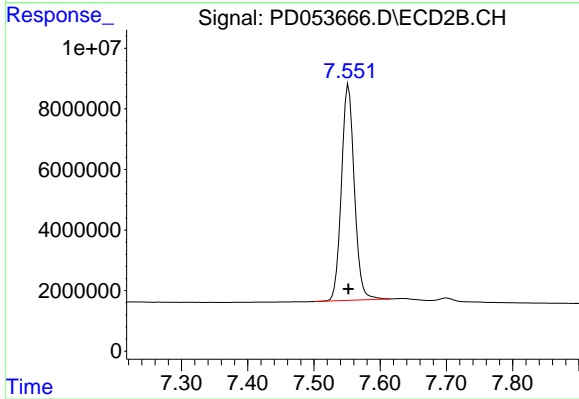
Instrument :
 ECD_D
ClientSampled :
 INDA301



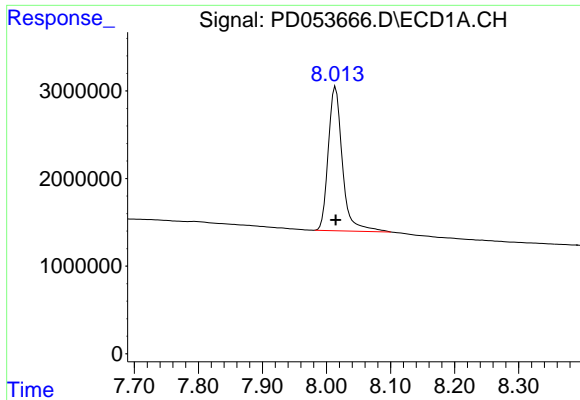
#17 4,4'-DDT
 R.T.: 7.097 min
 Delta R.T.: 0.000 min
 Response: 42829305
 Conc: 40.00 ng/ml



#20 Methoxychlor
 R.T.: 6.739 min
 Delta R.T.: 0.000 min
 Response: 51312339
 Conc: 200.00 ng/ml



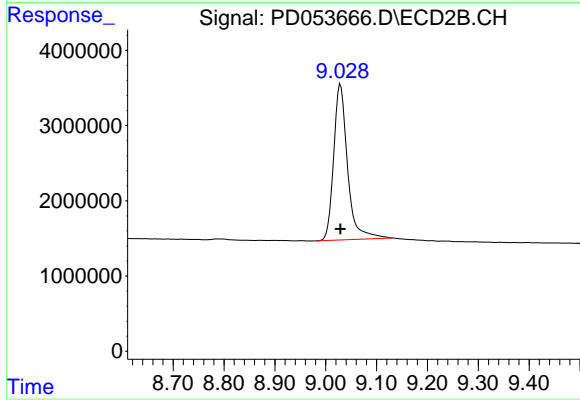
#20 Methoxychlor
 R.T.: 7.552 min
 Delta R.T.: 0.000 min
 Response: 96443130
 Conc: 200.00 ng/ml



#27 Decachlorobiphenyl

R.T.: 8.014 min
Delta R.T.: 0.000 min
Response: 25272106
Conc: 40.00 ng/ml

Instrument :
ECD_D
ClientSampled :
INDA301



#27 Decachlorobiphenyl

R.T.: 9.029 min
Delta R.T.: 0.000 min
Response: 39347632
Conc: 40.00 ng/ml