

Data Path : Z:\pestpcbsrv\HPCHEM1\ECD_D\Data\PD062022\
 Data File : PD070426.D
 Signal(s) : Signal #1: ECD1A.ch Signal #2: ECD2B.ch
 Acq On : 20 Jun 2022 20:54
 Operator : AR\AJ
 Sample : N3355-05
 Misc :
 ALS Vial : 44 Sample Multiplier: 1

Instrument :
 ECD_D
 ClientSampleId :

Integration File signal 1: autoint1.e
 Integration File signal 2: autoint2.e
 Quant Time: Jun 21 03:15:16 2022
 Quant Method : Z:\pestpcbsrv\HPCHEM1\ECD_D\Method\PD061422CLP.M
 Quant Title : GC Extractables
 QLast Update : Tue Jun 14 16:58:30 2022
 Response via : Initial Calibration
 Integrator: ChemStation

Volume Inj. : 1 µl
 Signal #1 Phase : ZB-MR2 Signal #2 Phase: ZB-MR1
 Signal #1 Info : 30M x 0.32mm x0.2 Signal #2 Info : 30M x 0.32mm x 0.50µm

	Compound	RT#1	RT#2	Resp#1	Resp#2	ng/ml	ng/ml

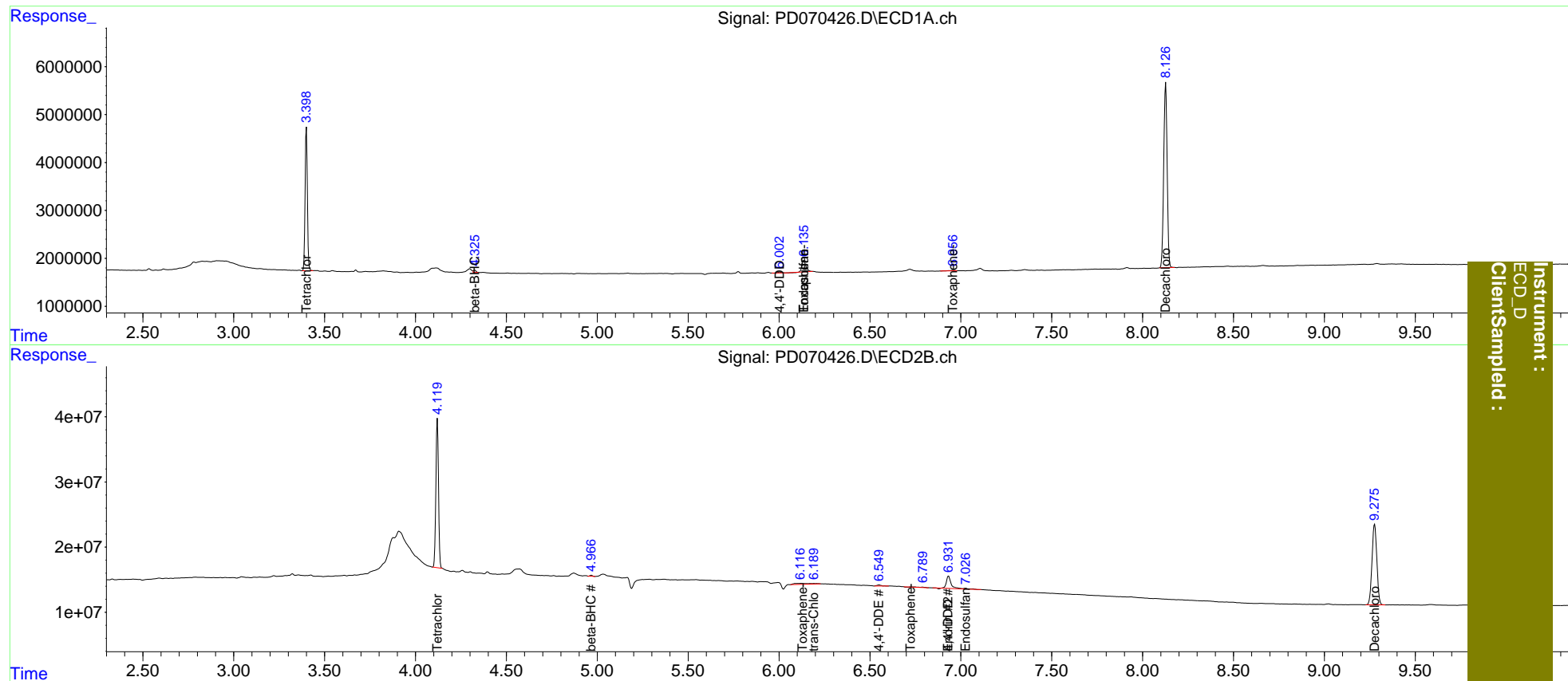
System Monitoring Compounds							
1)	SA Tetrachlo...	3.400	4.120	26092104	229.5E6	17.990	16.990
27)	SA Decachlor...	8.127	9.277	50521610	228.6E6	31.543	31.672
Target Compounds							
3)	MA gamma-BHC...	0.000	4.792	0	207433	N.D.	<MDL
6)	B beta-BHC	4.327f	4.967	467051	1351677	0.522	0.171 #
10)	B trans-Chl...	0.000	6.193f	0	1664068	N.D.	0.115
12)	B 4,4'-DDE	0.000	6.550f	0	2436876	N.D.	0.187
14)	MA Endrin	5.942	6.933f	144360	33431218	<MDL	2.906 #
15)	B Endosulfa...	6.137f	7.026f	3578088	2324913	2.205	0.211 #
16)	A 4,4'-DDD	6.004f	6.933f	279836	33431218	0.185	3.028 #
22)	Toxaphene-1	0.000	6.122	0	7767689	N.D.	244.109
23)	Toxaphene-2	6.137	6.726	3578088	711456	330.112	5.798 #
25)	Toxaphene-4	6.957	0.000	253556	0	7.798	N.D. #

(f)=RT Delta > 1/2 Window (#)=Amounts differ by > 25% (m)=manual int.

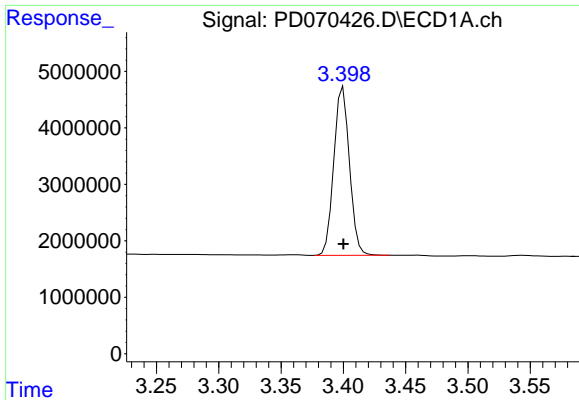
Data Path : Z:\pestpcbsrv\HPCHEM1\ECD_D\Data\PD062022\
 Data File : PD070426.D
 Signal(s) : Signal #1: ECD1A.ch Signal #2: ECD2B.ch
 Acq On : 20 Jun 2022 20:54
 Operator : AR\AJ
 Sample : N3355-05
 Misc :
 ALS Vial : 44 Sample Multiplier: 1

Integration File signal 1: autoint1.e
 Integration File signal 2: autoint2.e
 Quant Time: Jun 21 03:15:16 2022
 Quant Method : Z:\pestpcbsrv\HPCHEM1\ECD_D\Method\PD061422CLP.M
 Quant Title : GC Extractables
 QLast Update : Tue Jun 14 16:58:30 2022
 Response via : Initial Calibration
 Integrator: ChemStation

Volume Inj. : 1 µl
 Signal #1 Phase : ZB-MR2 Signal #2 Phase: ZB-MR1
 Signal #1 Info : 30M x 0.32mm x0.2 Signal #2 Info : 30M x 0.32mm x 0.50µm

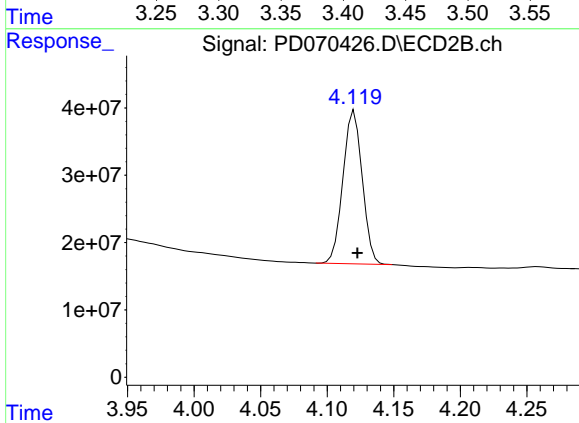


Instrument : ECD_D
 ClientSampled :

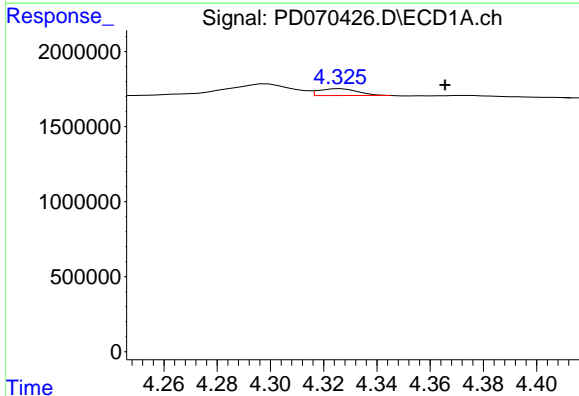


#1 Tetrachloro-m-xylene
 R.T.: 3.400 min
 Delta R.T.: 0.000 min
 Response: 26092104
 Conc: 17.99 ng/ml

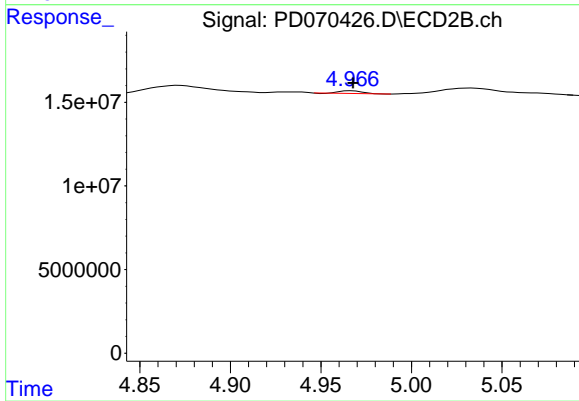
Instrument :
 ECD_D
 ClientSampleId :



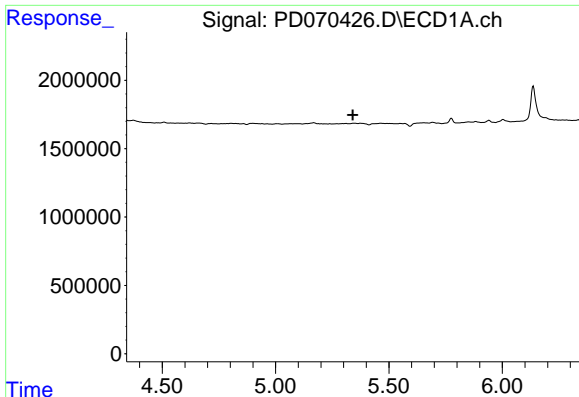
#1 Tetrachloro-m-xylene
 R.T.: 4.120 min
 Delta R.T.: -0.002 min
 Response: 229510556
 Conc: 16.99 ng/ml



#6 beta-BHC
 R.T.: 4.327 min
 Delta R.T.: -0.039 min
 Response: 467051
 Conc: 0.52 ng/ml



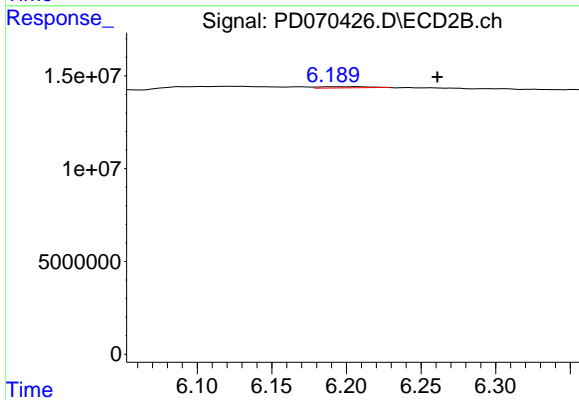
#6 beta-BHC
 R.T.: 4.967 min
 Delta R.T.: 0.000 min
 Response: 1351677
 Conc: 0.17 ng/ml



#10 trans-Chlordane

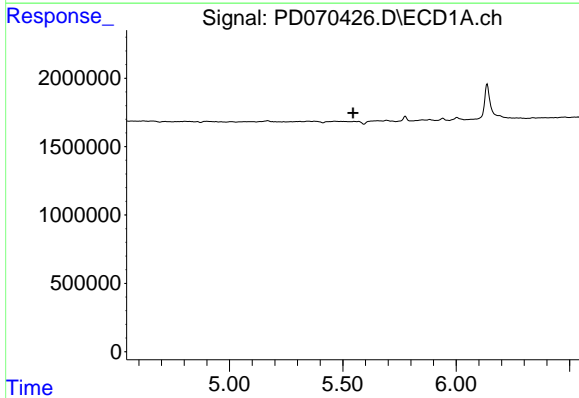
R.T.: 0.000 min
 Exp R.T.: 5.341 min
 Response: 0
 Conc: N.D.

Instrument :
 ECD_D
 ClientSampleId :



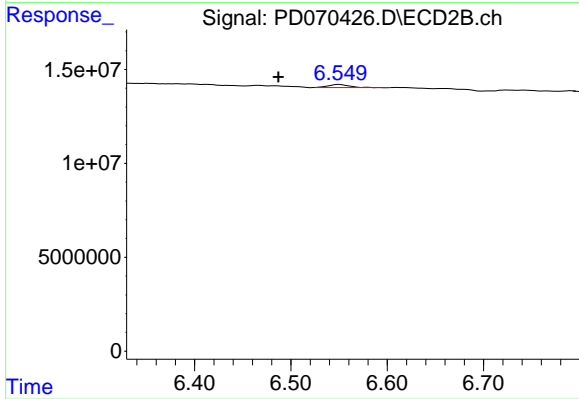
#10 trans-Chlordane

R.T.: 6.193 min
 Delta R.T.: -0.068 min
 Response: 1664068
 Conc: 0.12 ng/ml



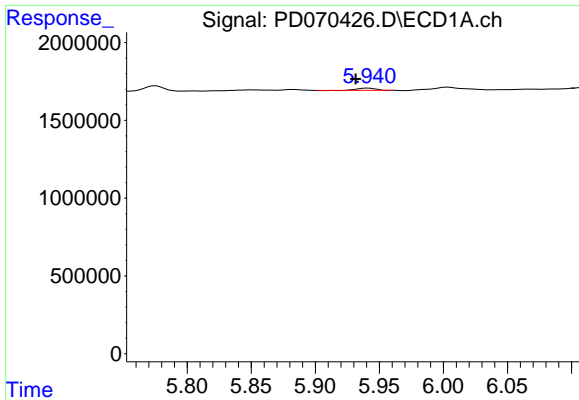
#12 4,4'-DDE

R.T.: 0.000 min
 Exp R.T.: 5.545 min
 Response: 0
 Conc: N.D.



#12 4,4'-DDE

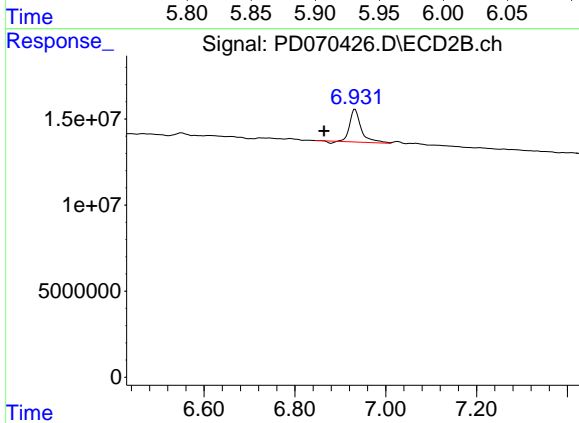
R.T.: 6.550 min
 Delta R.T.: 0.063 min
 Response: 2436876
 Conc: 0.19 ng/ml



#14 Endrin

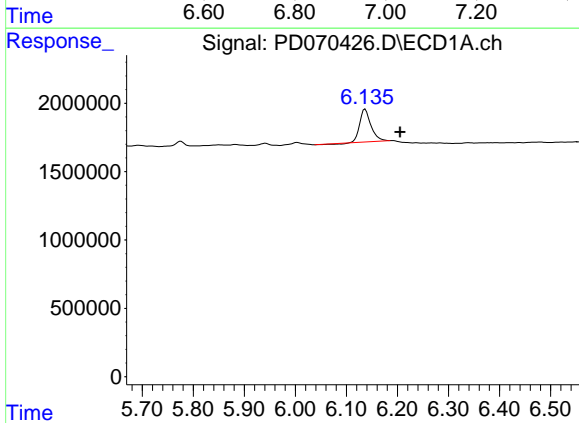
R.T.: 5.942 min
 Delta R.T.: 0.010 min
 Response: 144360
 Conc: N.D.

Instrument :
 ECD_D
 ClientSampleId :



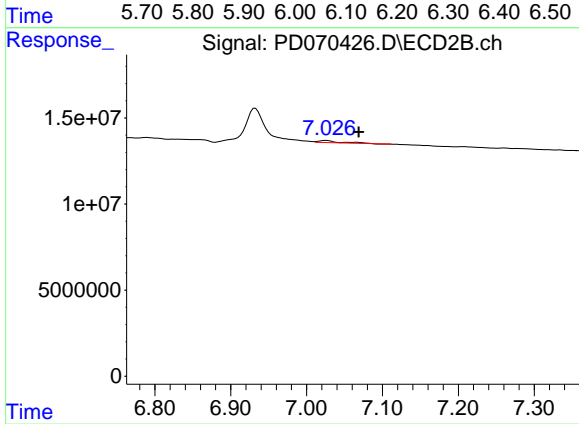
#14 Endrin

R.T.: 6.933 min
 Delta R.T.: 0.069 min
 Response: 33431218
 Conc: 2.91 ng/ml



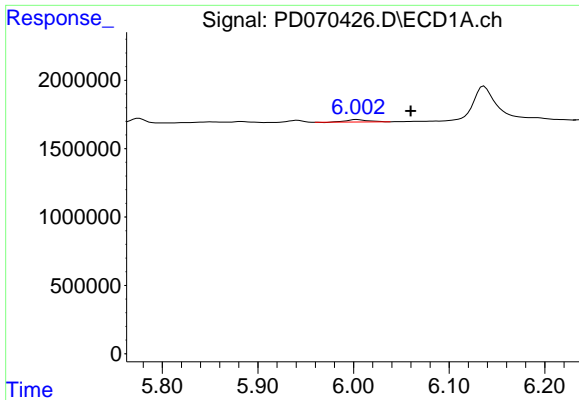
#15 Endosulfan II

R.T.: 6.137 min
 Delta R.T.: -0.068 min
 Response: 3578088
 Conc: 2.20 ng/ml



#15 Endosulfan II

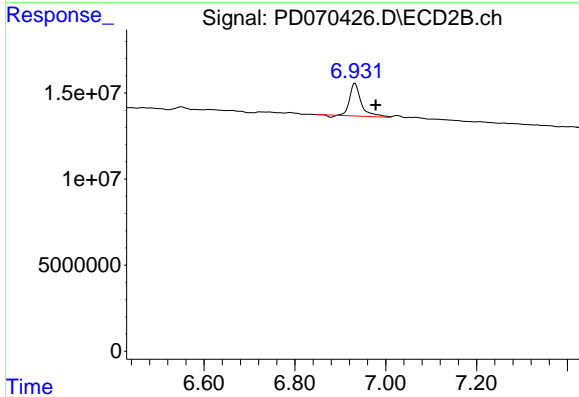
R.T.: 7.026 min
 Delta R.T.: -0.043 min
 Response: 2324913
 Conc: 0.21 ng/ml



#16 4,4'-DDD

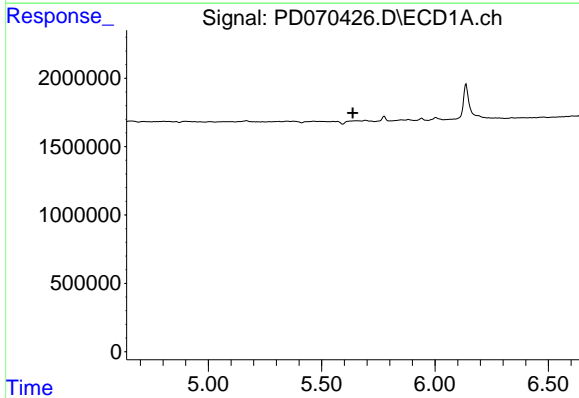
R.T.: 6.004 min
 Delta R.T.: -0.056 min
 Response: 279836
 Conc: 0.18 ng/ml

Instrument :
 ECD_D
 ClientSampleId :



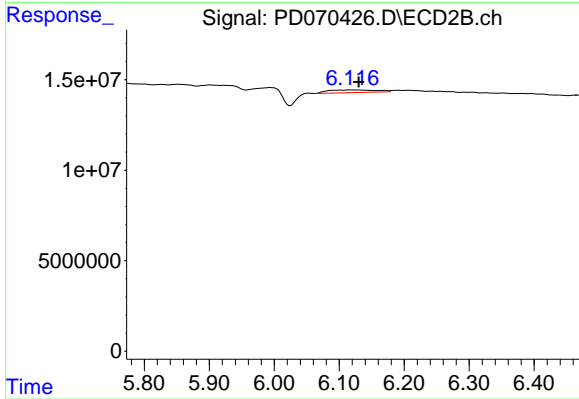
#16 4,4'-DDD

R.T.: 6.933 min
 Delta R.T.: -0.045 min
 Response: 33431218
 Conc: 3.03 ng/ml



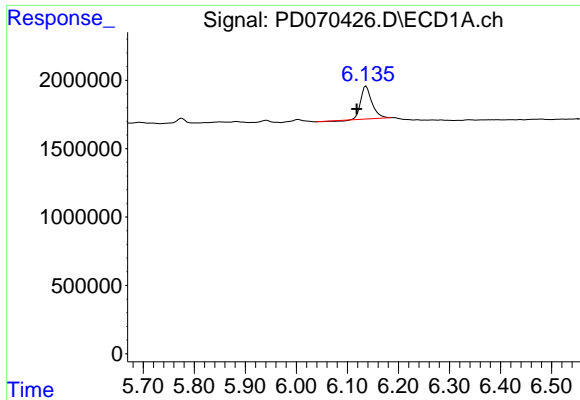
#22 Toxaphene-1

R.T.: 0.000 min
 Exp R.T. : 5.637 min
 Response: 0
 Conc: N.D.



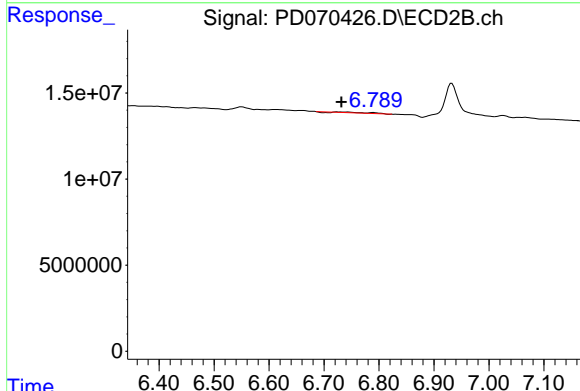
#22 Toxaphene-1

R.T.: 6.122 min
 Delta R.T.: -0.008 min
 Response: 7767689
 Conc: 244.11 ng/ml

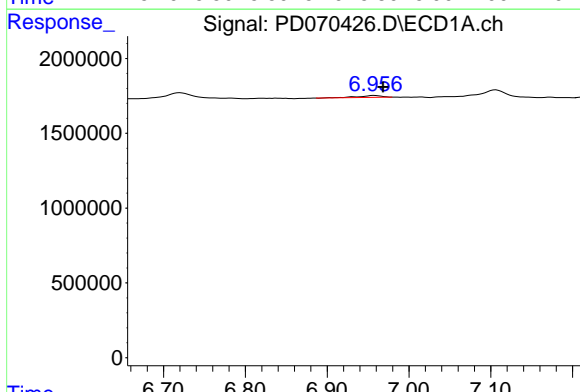


#23 Toxaphene-2
 R.T.: 6.137 min
 Delta R.T.: 0.018 min
 Response: 3578088
 Conc: 330.11 ng/ml

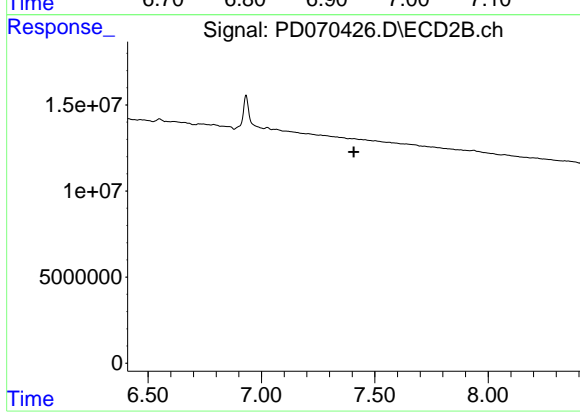
Instrument :
 ECD_D
 ClientSampleId :



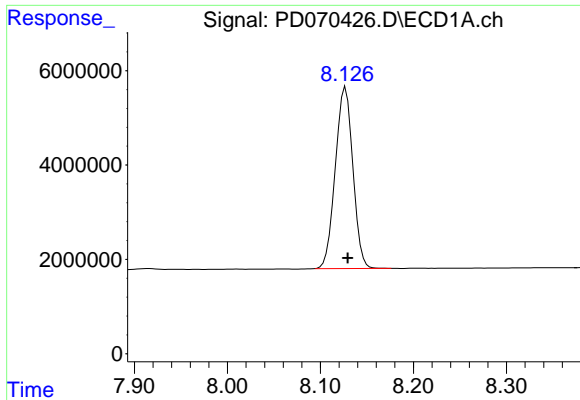
#23 Toxaphene-2
 R.T.: 6.726 min
 Delta R.T.: -0.006 min
 Response: 711456
 Conc: 5.80 ng/ml



#25 Toxaphene-4
 R.T.: 6.957 min
 Delta R.T.: -0.011 min
 Response: 253556
 Conc: 7.80 ng/ml



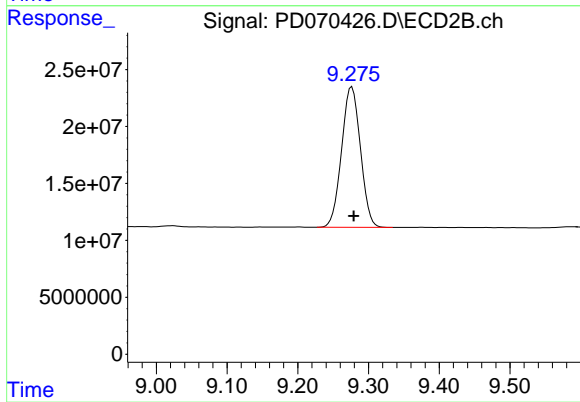
#25 Toxaphene-4
 R.T.: 0.000 min
 Exp R.T. : 7.408 min
 Response: 0
 Conc: N.D.



#27 Decachlorobiphenyl

R.T.: 8.127 min
Delta R.T.: -0.002 min
Response: 50521610
Conc: 31.54 ng/ml

Instrument :
ECD_D
ClientSampleId :



#27 Decachlorobiphenyl

R.T.: 9.277 min
Delta R.T.: -0.003 min
Response: 228573741
Conc: 31.67 ng/ml