

Data Path : Z:\pestpcbsrv\HPCHEM1\ECD\_D\Data\PD062222\  
 Data File : PD070455.D  
 Signal(s) : Signal #1: ECD1A.ch Signal #2: ECD2B.ch  
 Acq On : 22 Jun 2022 08:53  
 Operator : AR\AJ  
 Sample : PEM261  
 Misc :  
 ALS Vial : 3 Sample Multiplier: 1

**Instrument :**  
 ECD\_D  
**ClientSampleId :**  
 PEM060

**Manual Integrations**  
**APPROVED**

Reviewed By :Abdul Mirza 06/23/2022  
 Supervised By :Ankita Jodhani 06/23/2022

Integration File signal 1: autoint1.e  
 Integration File signal 2: autoint2.e  
 Quant Time: Jun 23 00:11:45 2022  
 Quant Method : Z:\pestpcbsrv\HPCHEM1\ECD\_D\Method\PD061422CLP.M  
 Quant Title : GC Extractables  
 QLast Update : Tue Jun 14 16:58:30 2022  
 Response via : Initial Calibration  
 Integrator: ChemStation

Volume Inj. : 1 µl  
 Signal #1 Phase : ZB-MR2 Signal #2 Phase: ZB-MR1  
 Signal #1 Info : 30M x 0.32mm x0.2 Signal #2 Info : 30M x 0.32mm x 0.50µm

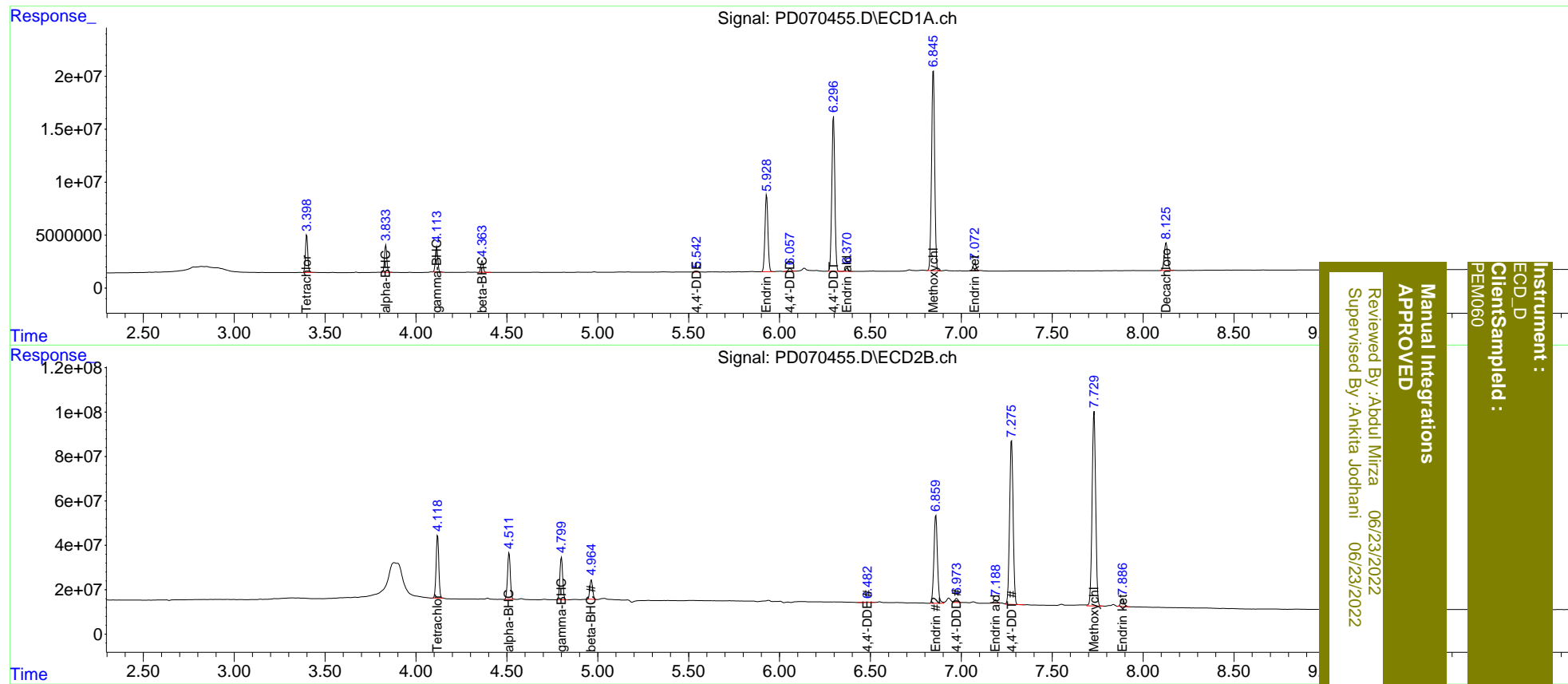
Compound	RT#1	RT#2	Resp#1	Resp#2	ng/ml	ng/ml
-----						
System Monitoring Compounds						
1) SA Tetrachlo...	3.399	4.119	31033308	290.1E6	21.397	21.476
27) SA Decachlor...	8.127	9.276	33643935	166.2E6	21.005	23.025
Target Compounds						
2) A alpha-BHC	3.834	4.513	22754975	221.5E6	10.768	11.316
3) MA gamma-BHC...	4.115	4.801	21405307	207.2E6	10.660	11.362
6) B beta-BHC	4.364	4.965	10300209	91854661	11.508	11.612
12) B 4,4'-DDE	5.543	6.484	181140	3061021	0.107	0.235 #
14) MA Endrin	5.929	6.860	82622060	535.2E6	48.550	46.515
16) A 4,4'-DDD	6.058	6.973	3257365	23775300	2.151	2.153m
17) MA 4,4'-DDT	6.297	7.277	168.6E6	993.0E6	115.828	96.576
18) B Endrin al...	6.371	7.188	3671382	18505390	2.951	2.200m#
20) A Methoxychlor	6.846	7.731	226.7E6	1198.9E6	267.848	253.953
21) B Endrin ke...	7.074	7.887	8075577	44570788	4.528	4.375

(f)=RT Delta > 1/2 Window (#)=Amounts differ by > 25% (m)=manual int.

Data Path : Z:\pestpcbsrv\HPCHEM1\ECD\_D\Data\PD062222\  
 Data File : PD070455.D  
 Signal(s) : Signal #1: ECD1A.ch Signal #2: ECD2B.ch  
 Acq On : 22 Jun 2022 08:53  
 Operator : AR\AJ  
 Sample : PEM261  
 Misc :  
 ALS Vial : 3 Sample Multiplier: 1

Integration File signal 1: autoint1.e  
 Integration File signal 2: autoint2.e  
 Quant Time: Jun 23 00:11:45 2022  
 Quant Method : Z:\pestpcbsrv\HPCHEM1\ECD\_D\Method\PD061422CLP.M  
 Quant Title : GC Extractables  
 QLast Update : Tue Jun 14 16:58:30 2022  
 Response via : Initial Calibration  
 Integrator: ChemStation

Volume Inj. : 1 µl  
 Signal #1 Phase : ZB-MR2 Signal #2 Phase: ZB-MR1  
 Signal #1 Info : 30M x 0.32mm x0.2 Signal #2 Info : 30M x 0.32mm x 0.50µm



Instrument : ECD\_D  
 Client Sampled : PEM060  
 Manual Integrations  
 APPROVED  
 Reviewed By : Abdul Mirza 06/23/2022  
 Supervised By : Ankita Jodhani 06/23/2022