

Data Path : Z:\pestpcbsrv\HPCHEM1\ECD_D\Data\PD062223\
 Data File : PD075976.D
 Signal(s) : Signal #1: ECD1A.ch Signal #2: ECD2B.ch
 Acq On : 21 Jun 2023 13:06
 Operator : AR\AJ
 Sample : TOXAPH201
 Misc :
 ALS Vial : 5 Sample Multiplier: 1

Integration File signal 1: autoint1.e
 Integration File signal 2: autoint2.e
 Quant Time: Jun 21 15:16:09 2023
 Quant Method : Z:\pestpcbsrv\HPCHEM1\ECD_D\Method\PD062223CLP.M
 Quant Title : GC Extractables
 QLast Update : Wed Jun 21 15:15:17 2023
 Response via : Initial Calibration
 Integrator: ChemStation

Volume Inj. : 1 µl
 Signal #1 Phase : ZB-MR1 Signal #2 Phase: ZB-MR2
 Signal #1 Info : 30M x 0.32mm x0.5 Signal #2 Info : 30M x 0.32mm x 0.25µm

Compound	RT#1	RT#2	Resp#1	Resp#2	ng/ml	ng/ml

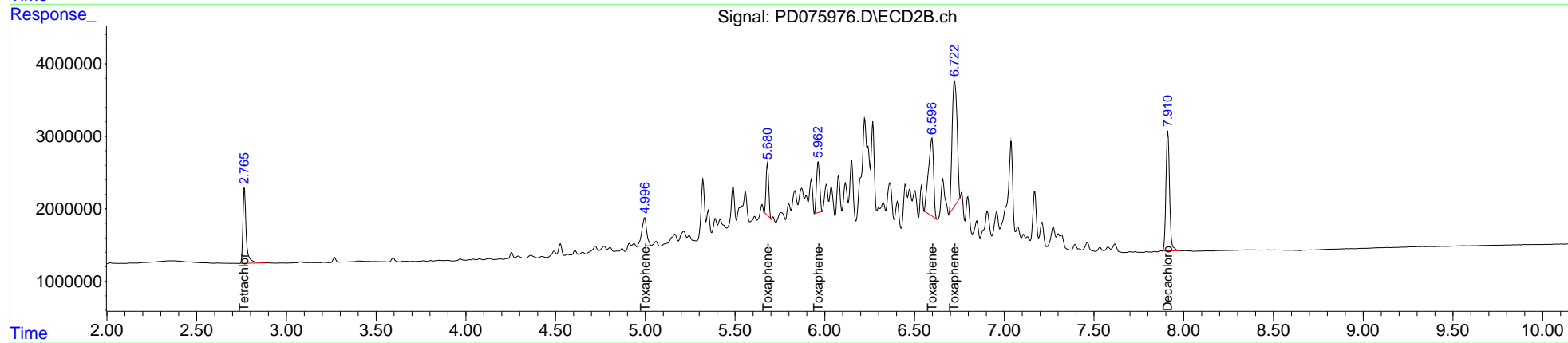
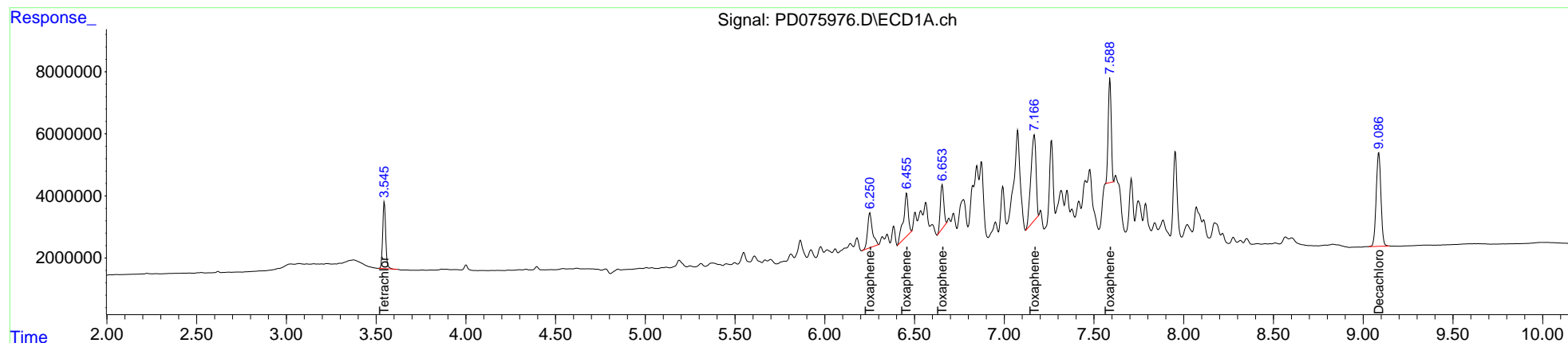
System Monitoring Compounds						
1) SA Tetrachlo...	3.546	2.767	24866426	13119420	9.882	9.996
27) SA Decachlor...	9.087	7.912	55270437	23059234	19.773	19.339
Target Compounds						
22) Toxaphene-1	6.252	4.997	21105517	7414049	976.086	1005.866
23) Toxaphene-2	6.456	5.681	26507951	7307383	943.850	929.206
24) Toxaphene-3	6.655	5.964	18919654	8616923	959.462	918.677
25) Toxaphene-4	7.167	6.597	55941359	21380453	923.381	844.964
26) Toxaphene-5	7.589	6.723	39012990	33191571	887.168	871.785

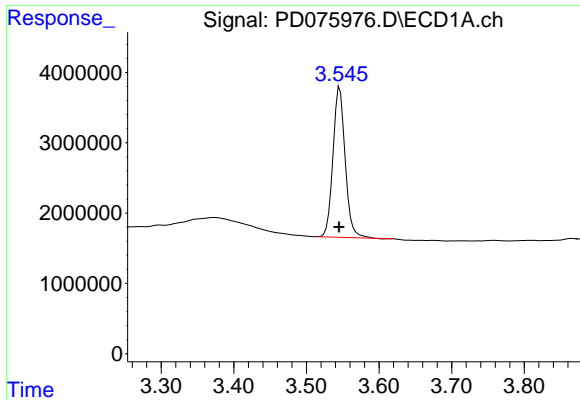
(f)=RT Delta > 1/2 Window (#)=Amounts differ by > 25% (m)=manual int.

Data Path : Z:\pestpcbsrv\HPCHEM1\ECD_D\Data\PD062223\
 Data File : PD075976.D
 Signal(s) : Signal #1: ECD1A.ch Signal #2: ECD2B.ch
 Acq On : 21 Jun 2023 13:06
 Operator : AR\AJ
 Sample : TOXAPH201
 Misc :
 ALS Vial : 5 Sample Multiplier: 1

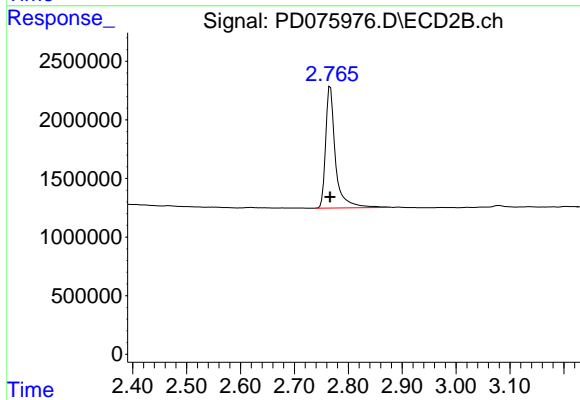
Integration File signal 1: autoint1.e
 Integration File signal 2: autoint2.e
 Quant Time: Jun 21 15:16:09 2023
 Quant Method : Z:\pestpcbsrv\HPCHEM1\ECD_D\Method\PD062223CLP.M
 Quant Title : GC Extractables
 QLast Update : Wed Jun 21 15:15:17 2023
 Response via : Initial Calibration
 Integrator: ChemStation

Volume Inj. : 1 µl
 Signal #1 Phase : ZB-MR1 Signal #2 Phase: ZB-MR2
 Signal #1 Info : 30M x 0.32mm x0.5 Signal #2 Info : 30M x 0.32mm x 0.25µm

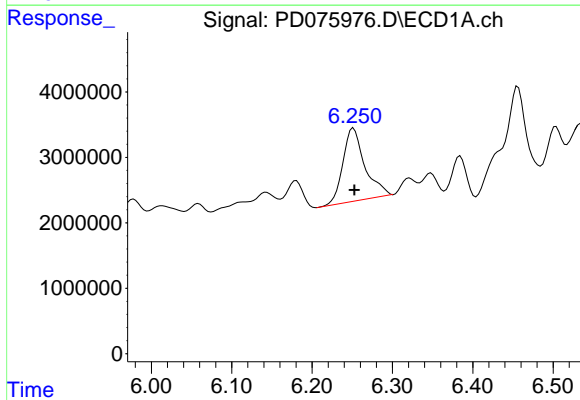




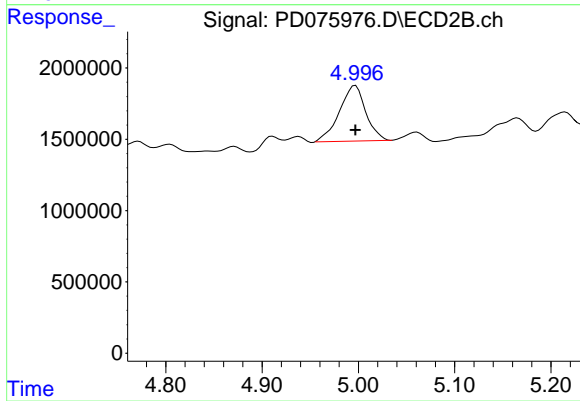
#1 Tetrachloro-m-xylene
R.T.: 3.546 min
Delta R.T.: 0.000 min
Response: 24866426
Conc: 9.88 ng/ml



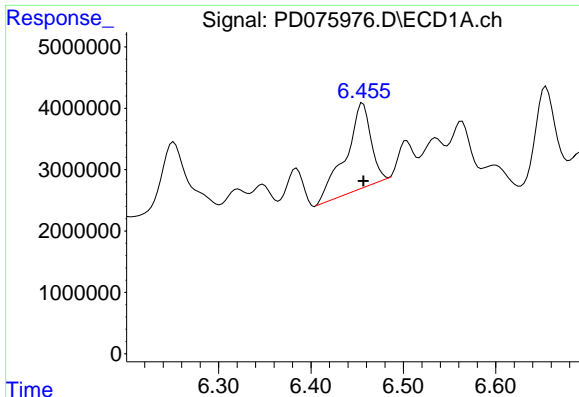
#1 Tetrachloro-m-xylene
R.T.: 2.767 min
Delta R.T.: 0.000 min
Response: 13119420
Conc: 10.00 ng/ml



#22 Toxaphene-1
R.T.: 6.252 min
Delta R.T.: -0.001 min
Response: 21105517
Conc: 976.09 ng/ml

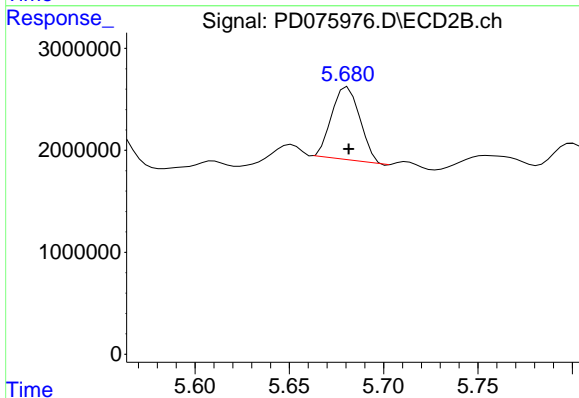


#22 Toxaphene-1
R.T.: 4.997 min
Delta R.T.: 0.000 min
Response: 7414049
Conc: 1005.87 ng/ml



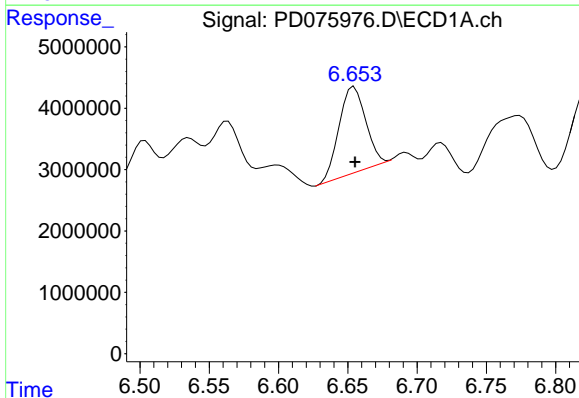
#23 Toxaphene-2

R.T.: 6.456 min
Delta R.T.: 0.000 min
Response: 26507951
Conc: 943.85 ng/ml



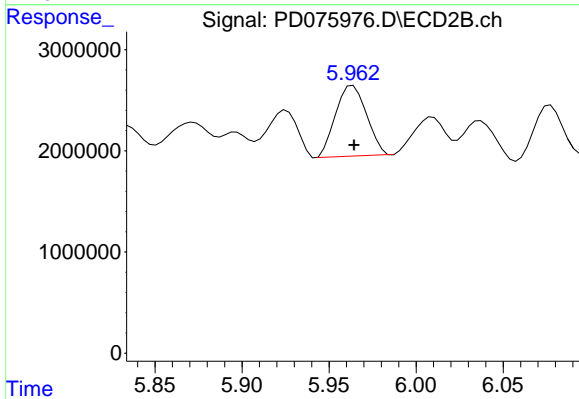
#23 Toxaphene-2

R.T.: 5.681 min
Delta R.T.: 0.000 min
Response: 7307383
Conc: 929.21 ng/ml



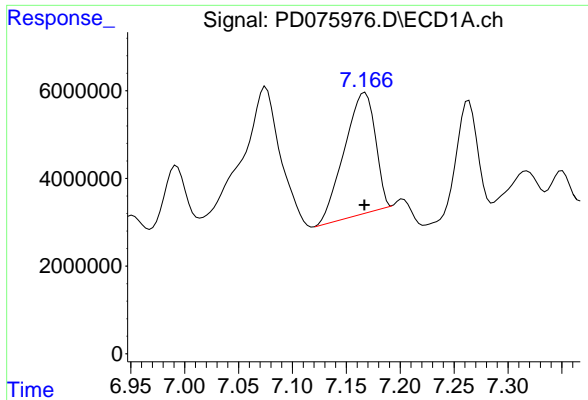
#24 Toxaphene-3

R.T.: 6.655 min
Delta R.T.: 0.000 min
Response: 18919654
Conc: 959.46 ng/ml



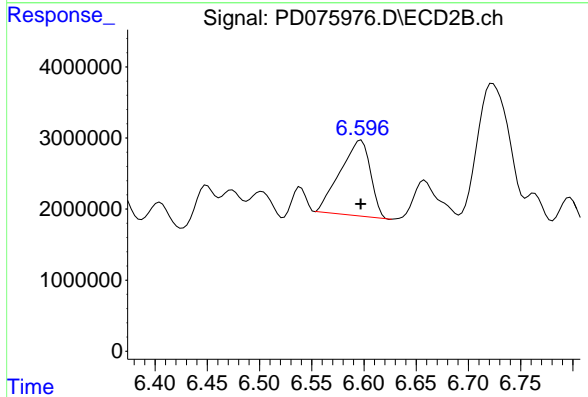
#24 Toxaphene-3

R.T.: 5.964 min
Delta R.T.: 0.000 min
Response: 8616923
Conc: 918.68 ng/ml



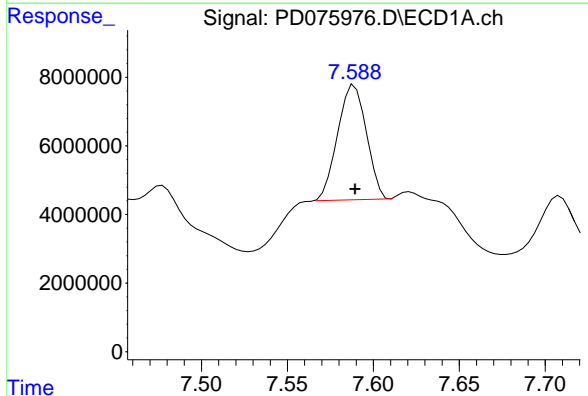
#25 Toxaphene-4

R.T.: 7.167 min
 Delta R.T.: 0.000 min
 Response: 55941359
 Conc: 923.38 ng/ml



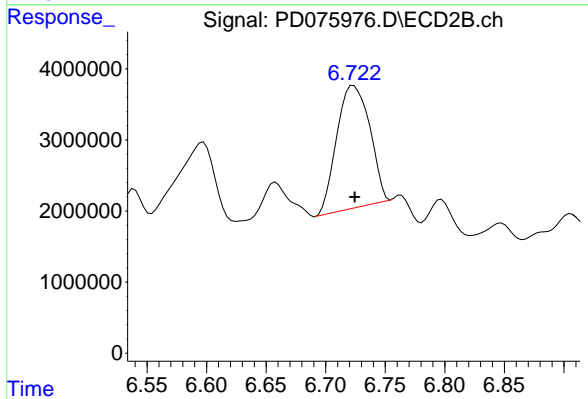
#25 Toxaphene-4

R.T.: 6.597 min
 Delta R.T.: 0.000 min
 Response: 21380453
 Conc: 844.96 ng/ml



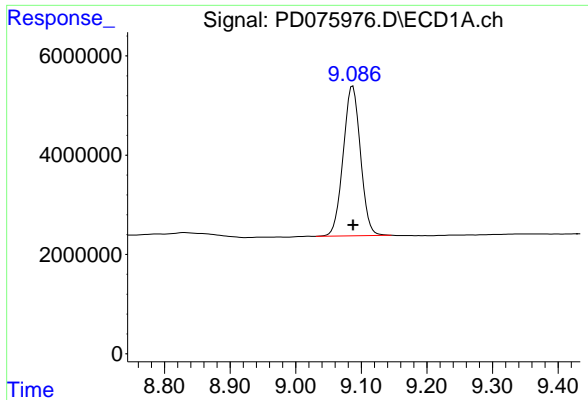
#26 Toxaphene-5

R.T.: 7.589 min
 Delta R.T.: 0.000 min
 Response: 39012990
 Conc: 887.17 ng/ml



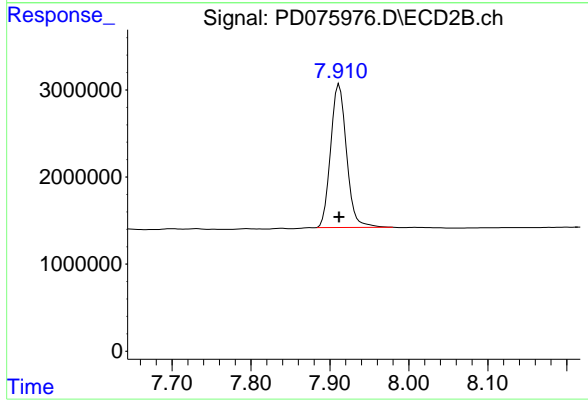
#26 Toxaphene-5

R.T.: 6.723 min
 Delta R.T.: 0.000 min
 Response: 33191571
 Conc: 871.78 ng/ml



#27 Decachlorobiphenyl

R.T.: 9.087 min
Delta R.T.: 0.000 min
Response: 55270437
Conc: 19.77 ng/ml



#27 Decachlorobiphenyl

R.T.: 7.912 min
Delta R.T.: 0.000 min
Response: 23059234
Conc: 19.34 ng/ml